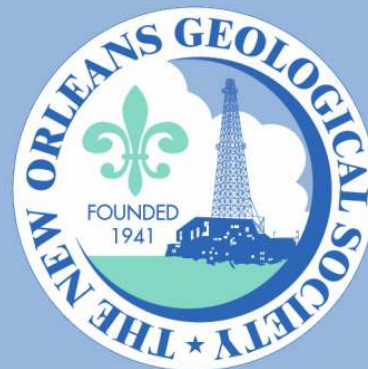


NOGS LOG



August 2009

Volume 50, Number 2

Upcoming Events and Activities

August 3 - NOGS Luncheon

*** At the Holiday Inn Downtown Superdome ***

\$2.00 validated parking in hotel garage

Guest speaker Melicie Desflots, AIR-Worldwide in Boston, will present
"2009 Hurricane Season and Hurricane Modeling For Offshore Assets In the Gulf of Mexico."

(See page 7 for Abstract and Biography)

HOLIDAY INN DOWNTOWN SUPERDOME

ADMISSION:

Check with concierge or
front desk for location

Lunch served at 11:30am

with reservation \$30.00

without reservation \$35.00

Student Member with reservation Free

August 27-28 - Deepwater Technical Symposium

Hilton Riverside in New Orleans. See announcement on page 17.

September 14 - NOGS Luncheon

Guest speaker John Rodi, Deputy Regional Director for the MMS Gulf of Mexico, will
present "MMS Offshore Renewable Energy Program."

September 19 - Annual Louisiana Beach Sweep and Inland Waterway Cleanup

For more information: http://www.saveourlake.org/beach_sweep.htm.

October 2 - NOGS Kick-Off Party

6:30-9:30 PM at Tom and Amber Klekamp's home in Beau Chene, Mandeville

November 12 - SGS Technical Symposium

"Exploration Offshore USA OCS: Opening the Next Frontier?" In New Orleans.
See announcement on page 30.

December 4 - NOGA-NOGS Christmas Holiday Party

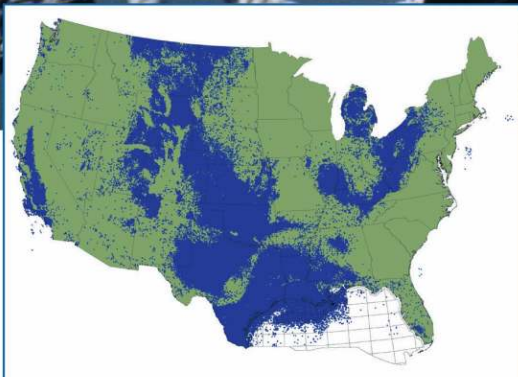
At Metairie Country Club. More details in future LOG issues.

December 6-8 - 29th Annual GCSSEPM Foundation Bob F. Perkins Research Conference

"Unconventional Resources: Making the Unconventional Conventional."
In Houston. See announcement on page 8.

Introducing

LASSO



Lasso up all the digital LAS well log data you need from the industry's largest collection

With LASSO, lock in TGS' program rates on digital LAS well data from our US collection, growing at an unprecedented pace to more than 500,000 wells over the next several months. LASSO strengthens your exploration projects with the higher-order capabilities of increased digital well log use. LASSO digital data from TGS, the industry's well log data leader, is quality controlled and available online for immediate downloads.

For more information about LASSO, contact your TGS account representative or call 1- (888) LOG-LINE.



Geophysical
Products



Geological
Products



Imaging
Services

www.tgsnopec.com

NORWAY +47 66 76 99 00 | USA +1 713 860 2100 | UK +44 (0) 1234 272122 | AUSTRALIA +61 8 9480 0000

© TGS-NOPEC Geophysical Company. All rights reserved.

NOGS Office

Office Manager: Annette Hudson

Office Hours: 8:30am – 3:30pm on Monday-Wednesday-Friday

Tel: 504-561-8980 □ Fax: 504-561-8988

E-mail: info@nogs.org □ Website: www.nogs.org

The office is located at Suite 300, 810 Union Street, New Orleans, LA 70112.

Correspondence and all luncheon reservations should be sent to the above address.

Sent to press on July 29, 2009.

**BOARD OF DIRECTORS**

		Company	Phone	E-mail
President	Tom Klekamp	Amber Resources LLC	985-845-4046	klekamp@bellsouth.net
Vice President	Bob Hafner	ENI Petroleum	504-593-7605	Robert.Hafner@enipetroleum.com
Secretary	Jennifer Connolly	Shell	504-728-6411	jennifer.connolly@shell.com
Treasurer	Chuck Holman	ENI	504-593-7869	chuck.holman@enipetroleum.com
President-Elect	David E. Reiter	ENI	504-593-7606	david.reiter@enipetroleum.com
Editor	Elizabeth Petro	MMS	504-736-2866	nogseditor@gmail.com
Director 2010	Michael M. Ledet		504-394-9636	mikeledet@cox.net
Director 2011	Scott A. Wainwright	Bret Exploration Co Inc	504-889-2700	scott_wainwright@hotmail.com
Director 2012	Arthur H. Johnson	Hydrate Energy International	504-464-6208	artjohnson51@hotmail.com

COMMITTEE

	Chairperson			
AAPG Delegates	Dave Balcer	Chevron	985-773-6725	dbalcer@Chevron.com
AAPG Student Chapter	Bobby Cosentino	Tulane University	504-495-9475	rcosenti@tulane.edu
AAPG Student Chapter	Bryan Rogers	UNO	504-736-2772	thgem@gmail.com
Advertising-Log	Andrea Stancin	Shell	504-728-0431	Andrea.a.stancin@shell.com
Auditing	James Swaney	MMS	504-736-2677	james.swaney@mms.gov
Awards	Michael N. Fein	W & T Offshore	504-210-8148	mikef@wtoffshore.com
Ballot	Chuck Holman	ENI	504-593-7869	chuck.holman@enipetroleum.com
Best Paper	David E. Reiter	ENI	504-593-7606	david.reiter@enipetroleum.com
Continuing Education	TBA			
Employment Counseling	Paul J. Post	MMS	504-736-2954	paul.post@mms.gov
Entertainment	David E. Reiter	ENI	504-593-7606	david.reiter@enipetroleum.com
Environmental	Daisy Pate	Eustis Geotechnical Eng.	504-613-5798	dpate@eustiseng.com
External Affairs	Michael A. Fogarty	Sylvan Energy, LLC	603-523-4808	mike.a.fogarty@gmail.com
Field Trip	David Garner	Shell	504-728-6154	David.Garner@shell.com
Finance and Investment	Chuck Holman	ENI	504-593-7869	chuck.holman@enipetroleum.com
Historical	Edward B. Picou, Jr.	Consultant	504-529-5155	epicou@bellsouth.net
Membership/Directory	Penne Rappold	Shell	504-728-4338	prappold@gmail.com
New Geoscientists (NGNO)	TBA			
Nominating	Willis E. Conatser		504-466-9749	weconatser@aol.com
Non-Technical Education	Duncan Goldthwaite	Consultant	504-887-4377	DGldthwt@aol.com
Office Operations	William M. Whiting	Consultant	504-947-8495	bootscom@aol.com
Publications Sales	Edward B. Picou, Jr.	Consultant	504-529-5155	epicou@bellsouth.net
Photography	J. David Cope	Taylor Energy Co LLC	504-589-0419	dcope@taylorenergy.com
School Outreach	Thomas C. Bergeon	Century Exploration	504-832-3772	Tom.bergeon@centuryx.com
Scouting	Carol Rooney	Consultant Geologist	504-835-1909	carolbrooney@aol.com
Technical Projects	TBA			
Ad Hoc Committee on University Support	Michael J. Gallagher	Eni Petroleum	504-593-7480	Michael.Gallagher@enipetroleum.com

NOGS LOG STAFF

Editor	Elizabeth Petro	MMS	504-736-2866	nogseditor@gmail.com
Editor-Elect	Fran Wiseman	MMS	504-736-2912	frances.wiseman@mms.gov
Auxiliary	Susie Baker	NOGA	504-466-4483	abaker1006@aol.com
Info Tidbits	Elizabeth Petro	MMS	504-736-2866	nogseditor@gmail.com
Drill Bits	TBA			
Webmaster	Edward B. Picou, Jr.	Consultant	504-529-5155	epicou@bellsouth.net
Layout	Jannette Sturm-Mexic			

NOGS AUXILIARY

Officers		Phone	Directors	Year	Phone
President	Linda Peirce	504-393-7365	Beverly Christina	2009-10	504-835-2383
1st Vice-President	Jean Jones	504-738-8091	Peggy Rogers	2009-10	504-392-6323
2nd Vice-President	Beverly Kastler	504-286-0879	Judy Sabate'	2009-10	504-861-3179
Secretary	Dolores Murphy	504-393-0878	Peggy Campbell	2009-11	504-283-2505
Treasurer	Judy Lemarie'	504-393-8659	Ruth Grimes	2009-11	504-392-8103
Parliamentarian	Carol Andrews	504-887-3432	Gerry Waguespack	2009-11	504-737-0532
Member-at-Large	Susie Baker	504-466-4483			

--- NOGS Contact List continued on page 10 ---



Higher Standards



Weatherford LABORATORIES

At Weatherford Laboratories, we hold fast to Higher Standards. Our purpose is to continually push past conventional solutions to find new and better ways to optimize oil and gas production.

■ By integrating seven entrepreneurial companies, we bring unsurpassed innovation to the industry. Our accomplishments include 50 new technologies, 45 original products, 35 industry awards, and 13 registered patents. Among our ranks are several luminaries of the industry, as well as scores of respected scientists who have authored hundreds of technical papers. ■ With 38 laboratories around the globe, our team raises the bar for wellsite sampling, core management services, geochemical analyses and evaluation of unconventional reservoirs.

At Weatherford Laboratories, we expect more from ourselves so you can expect more from us.

Weatherfordlabs.com

CORPORATE OFFICES

ACS Laboratories Pty Ltd
Brisbane, Australia

OMNI Laboratories
Houston, Texas USA

ResLab Reservoir Laboratories
Trondheim, Norway

Humble Geochemical Services
Houston, Texas USA

TICORA Geosciences
Denver, Colorado USA

Baseline Resolution, Inc.
Houston, Texas USA

Hycal Energy Research Laboratories
Calgary, Alberta, Canada



from the President

Frontier Atlantic Margin, deepwater technology, gas hydrates, alternate energy, management techniques, posters by up-and-coming scientists and engineers are some of the topics you'll find at the Deepwater Symposium, August 27-28. The Symposium could use a few NOGS volunteers. Call the NOGS office if you would like to lend some help. A tip: save a few parking bucks by using the Hilton garage that enters at street level next to the hotel-not the ramp off Exposition Boulevard.

While I'm on technology let me plug the Society of Petroleum Engineers (SPE) and their Journal of Petroleum Technology (JPT). SPE welcomes geologists; I joined SPE back in the 1970s and found it neatly complemented my AAPG membership. The JPT carries a significant amount of geoscience, international and domestic discoveries, field developments, and articles on topics like gas hydrates, future methane economics, tar sands, tight gas sands, carbon capture and storage, bypassed pays and more. JPT provides the engineering and economics that you don't necessarily glean from a geological magazine. Locally, SPE's Delta Chapter meets monthly September-May.

Last month Penne Rappold reported our membership has been dropping since 1998, when we had 1,140 members. As of early July, when I am penning this page, most renewals are in, and we should end up with over 500 members. Last year we had a balanced budget, and our finances appear to be in good shape, though we are three weeks from our 2009-10 budget meeting.

Obviously we have a deficit in members. How many geoscientists are "flying below the radar" and what can we do to include them in NOGS? I recently learned there are local environmental and engineering geoscientists who are not NOGS members. Traditionally NOGS has been oil industry oriented-Katrina changed the mix. Besides oil and gas, Louisiana and especially the New Orleans region have proven dependent on coastal erosion, rising sea level, sedimentation processes, and faulting that affects subsidence and foundations. This is "in-your-face" geology, and hardly a fortnight goes by that the Louisiana coast is not in the local or national news. Thanks to Mark Schleifstein and Bob Marshall, the Times-Picayune probably runs more geologically related articles than any other paper in the world. Their stories and staff illustrations

are even used in Geo 101 lectures. Pre-Katrina, NOGS promoted lectures, field trips and symposia that focused on coastal processes. Post-Katrina there has been even more emphasis, such as the flood symposia and the popular Katrina trips led by Tulane's Professor Steve Nelson. One of our NOGS science fair winners last year featured a project on soil mechanics. News articles, flooding conferences, Katrina field trips, and a youngster's fascination with soils-all tell me there is a local group that is interested in and working with earth processes. Therefore, I would like to ask our members working in geotechnical and environmental firms; conservancies and foundations; state and Federal agencies to get the word out about NOGS to your fellow geoscientists that we are yet a geological society.

"LSU researchers: coastal restoration projects doomed to fail," was the headline on my Monday, May 29 Times-Picayune. The accompanying article by Pulitzer Prize winner Mark Schleifstein summarized a recent Nature article by LSU's Michael Blum and Harry Roberts. You can download the entire four page article, "Drowning of the Mississippi Delta due to insufficient sediment supply and global sea-level rise" in Nature Geoscience. Incidentally, we learned recently that Mike Blum accepted a position with Exxon Research in Houston and wish him success.

Check out the new Earth Science Literacy Principles, a thirteen-page NSF document outlining the big ideas and supporting concepts of Earth Science. Ed Picou has made it available on our NOGS Website; search in the "Articles and Presentations Page," then under "Earth Science Education."

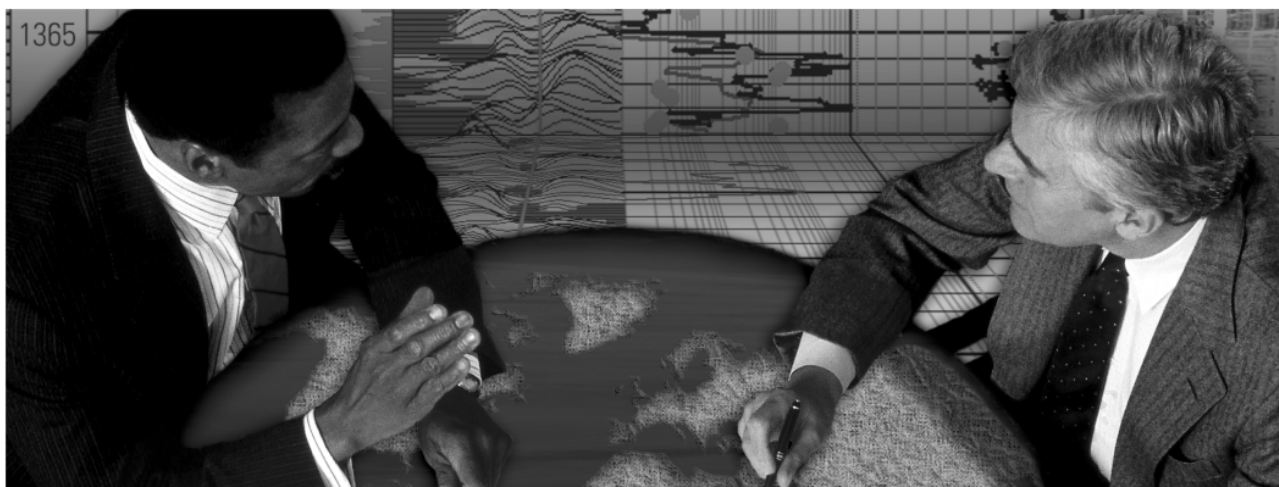
Finally, the NOGS Log "Drill Bits" is looking for a new writer for offshore and onshore activity. It may take the collaboration of two or more people. Paul Post has done a masterful job with the column. We thank him for researching and keeping track of E&P activity. Prior to Paul, Drill Bits writers included Mike Ledet and Roy Walther. If you're interested in authoring this important column, contact Editor Liz Petro.

Tam

energyinformation

Business solutions for
the oil & gas industry

Schlumberger formation evaluation solutions deliver the answers you need. Our extensive portfolio of services, leading-edge technology, and advanced conveyance options keep you in communication with your well throughout its life cycle.



With formation evaluation technologies from Schlumberger, you can make the best decisions for optimized performance in every well.

The formation evaluation one-stop shop

Whether you are logging in open hole or behind the casing, our broad selection of services ensures the best solution for acquiring formation evaluation data. Tools can be conveyed while drilling or on wireline or pipe. We offer many specialized evaluation capabilities, from density, neutron porosity, and resistivity to borehole imaging, nuclear magnetic resonance logging, borehole seismic, formation pressure testing, and fluid sampling. Advanced triple-combo logging options include the VISION* formation evaluation and imaging-while-drilling services. Coupled with Pulse* telemetry and surveying services, the VISION family provides real-time formation evaluation data and enables optimum well placement.

High-speed wireline measurements are recorded with the Platform Express* logging services. The SlimXtreme* platform is designed for high-pressure, high-temperature environments and the ABC* Analysis Behind Casing services are used after casing is set.

Expert interpretation from the engineers and geoscientists of Schlumberger Data & Consulting Services brings all your data together to give you the answers you need. This expertise is available after logging is complete or as real-time two-way wellsite communication through the InterACT* real-time monitoring and data delivery system.

Schlumberger delivers leading-edge technology and interpretation expertise for all your formation evaluation needs, so every well benefits from the very best information.

For more information visit
www.slb.com/oilfield/formation_evaluation/

*Mark of Schlumberger

04-FE-114

Schlumberger

August 3 NOGS Luncheon Presentation

*** at the Holiday Inn Downtown Superdome ***

2009 Hurricane Season and Hurricane Modeling For Offshore Assets In the Gulf of Mexico

presented by

Mélicie Desflots*

AIR Worldwide, Boston, MA

ABSTRACT

The relatively quiet 2007 hurricane season for the Gulf of Mexico (GOM) caused very little disruption to oil and gas production. The 2008 hurricane season was a much different story. Hurricanes Gustav and Ike destroyed 60 platforms and left 31 more with extensive damages. The destroyed platforms had accounted for 1.05% of the oil and 1.3% of the gas produced daily in the GOM.

The Minerals Management Service's 2009 GOM production forecast is slightly over 1.2 million barrels of oil and about 6.97 billion cubic feet of gas per day. This forecast does not include technologic challenges and hurricanes with the potential to disturb the oil and gas production. An average of 1.63 hurricanes enters or forms in the Gulf of Mexico every year, and 0.53 of these are major hurricanes (category 3 or higher). The 2008 hurricane season had been forecasted by Colorado State University to be an above average season with 44% chance of at least one major

hurricane making landfall along the Gulf coast. As of April 2009, the extended hurricane forecast from Colorado State University indicates that there is a 31% chance that at least one major hurricane will make landfall somewhere along the Gulf coast.

A hurricane produces high winds and waves that can significantly affect the offshore oil and gas platforms in the GOM. The AIR U.S. Hurricane model for offshore assets models both wind and waves (wind-driven waves as well as storm surge) to estimate the potential losses induced by a hurricane. This talk will discuss efforts of the catastrophe modeling industry to predict hurricane-related losses in the GOM. The talk will also focus on the AIR US Hurricane model for offshore assets, which includes impacts from wind, wave and surge.

* **Co-Authors:** Paolo Bazurro, Jay Guin, Peter Sousounis, Greta Ljung and Jason Butke

BIOGRAPHY

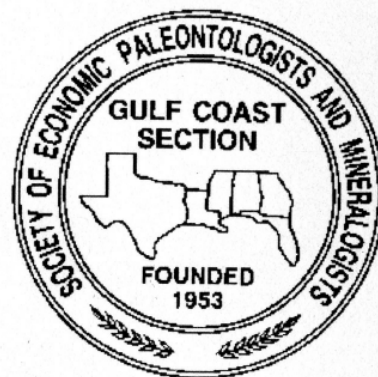
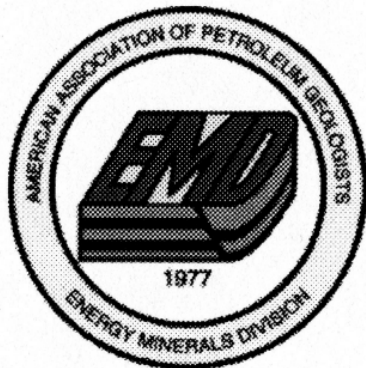
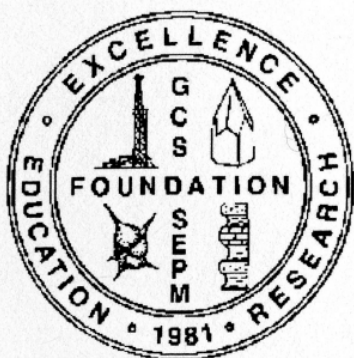
Mélicie received her M.S. in Remote Sensing at University of Paris VII (Jussieu in Paris, France) in 2002 and a Ph.D. in Meteorology and Physical Oceanography from the University of Miami in 2008. The emphasis of her Ph.D. work was the improvement of the representation of the surface heat fluxes in tropical cyclones wind speed in a high resolution fully coupled (atmosphere-wave ocean) numerical model. Her work has been presented at several hurricane conferences. During her Ph.D. she was involved in the NSF funded project RAINEX in 2005 and was a

scientist onboard aircraft that flew in Hurricane Katrina and Rita. Mélicie started her position as an atmospheric scientist in the research and modeling group at AIR Worldwide Corporation (AIR) in 2008. AIR Worldwide is a provider of risk modeling software and consulting services to more than 400 insurance, reinsurance, financial, corporate and government clients worldwide. She is currently in charge of the improvements of the wind field formulation for the Asian typhoon models of AIR.

THE LUNCHEON RESERVATION DEADLINE IS JULY 29 - CONTACT THE NOGS OFFICE

“And Looking Ahead...”

The next NOGS Luncheon will be September 14. Guest speaker John Rodi, Deputy Regional Director for the MMS Gulf of Mexico, will present “MMS Offshore Renewable Energy Program.” Contact the NOGS office to make your reservation.



UNCONVENTIONAL RESOURCES:

Making the Unconventional Conventional

**29th Annual GCSSEPM Foundation Bob F. Perkins
Research Conference**

**Houston, Texas, December 6-8, 2009
Houston Marriott Westchase Hotel**

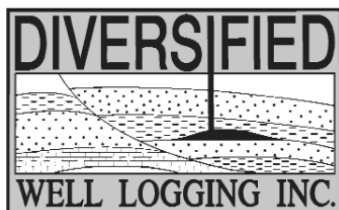
**Latest information and registration
are available on our website:**

www.gcssepm.org



Relax. We'll keep you posted.

Your rig is offshore and you are not. How do you know what's going on so many miles away? You know because we tell you. Daily or even hourly, Diversified Well Logging's engineers update you on the status of your rig. We are your eyes and ears, especially when it comes to deep water or high pressure, high temperature areas. Diversified offers 24-hour surface evaluation. We provide secure and customized real-time data communication, in-house research and development and 24/7 on-call support for our equipment and our engineers. Whether you have a 10-day job or 110-day job, we provide the specialized attention you require. So, relax. We're with you every step of the way.



Serving the Gulf Coast for over 40 years.

New Orleans • Lafayette • Houston • Dallas • Corpus

800.280.2096

711 West 10th Street • Reserve, LA 70084 • Phone: 985.536.4143 • Fax: 985.536.2427
sales@dwl-usa.com



**PALEO
DATA**

**FULLY INTEGRATED AND
CENTRALIZED BIOSTRATIGRAPHIC
SERVICES**

- ▼ Single-source biostratigraphic databases
for increased accuracy and consistency
- ▼ Integrated foram / nannofossil analyses
- ▼ Complete wellsite paleo services
- ▼ In-house sample preparation
lab for quality-monitoring
and efficiency
- ▼ Sample pick-up service

6619 Fleur de Lis Drive
New Orleans, LA 70124
(504) 488-3711

www.paleodata.com

MCMORAN EXPLORATION CO.



MCMORAN OIL & GAS

www.mcmoran.com

NYSE: MMR

16676 Northchase Dr.
Houston, TX 77060
(281) 539-7600
Fax: (281) 539-7655

1615 Poydras
New Orleans, LA 70112
(504) 582-4000
Fax: (504) 582-4155

110 Travis St., Suite 140
Lafayette, LA 70503
(337) 735-9150
Fax: (337) 735-9151

NOGS CONTACT LIST

--- continued from page 3 ---

MEMORIAL FOUNDATION

BOARD OF TRUSTEES

2009-10 Chairman	William M. Whiting
2009-10 Secretary	Tom Klekamp
2009-10 Trustee	Michael C. Fauquier
2009-10 Trustee	J. David Cope
2010-11 Trustee	Timothy J. Piwowar
2010-11 Trustee	Michael N. Fein
2011-12 Trustee	Monte Shalett
2011-12 Trustee	James Swaney

Company

Consultant
Amber Resources LLC
W & T Offshore
Ankor Energy
Shell
W & T Offshore
Berkshire Exploration Co
MMS

Phone

504-947-8495
985-845-4046
504-210-8192
504-596-3672
504-728-4066
504-210-8148
504-831-7779
504-736-2677


E-mail

bootscon@aol.com
klekamp@bellsouth.net
mfauquier@wtoffshore.inc
dcope@ankorenergy.com
tim.piwowar@shell.com
mikef@wtoffshore.com
mshalett@gmail.net
james.swaney@mms.gov

AAPG DELEGATES

Term Ends

2011	Tom Hudson	Chevron	985-773-7163	tom.hudson@chevron.com
2011	Edward B. Picou, Jr.	Consultant	504-529-5155	epicou@bellsouth.net
2011a)	Brenda Reilly	Energy Partners Ltd.	504-799-4811	breilly@eplweb.com
2011a)	Robert Rooney	Century Exploration	504-832-3777	Robert.rooney@centuryx.com
2012	William Whiting	Consultant	504-947-8495	bootscon@aol.com
2012	Jim Zotkiewicz	Zot Oil & Gas	504-831-4694	jimzot38@zotoil.com
2012 a)	David E. Balcer	Chevron	985-773-6725	dbalcer@Chevron.com
2012 a)	Richard J. Stancliffe	Shell Expl & Prod Co.	504-728-7553	richard.stancliffe@shell.com



Dubai
T: +971 4 4271700


Houston
T: +1 281 556 1666

Oslo
T: +47 2240 2700

Trondheim
T: +47 7 3879500


Singapore
T: +65 9180 2605

Take a look at the *future* of
MARINE SEISMIC



www.sbexp.com
www.seabed.no

- Autonomous 4C nodes rated to 3000 m
- Acoustic Communication/Data QC
- Best sensor orientation in the market
- Highest quality coupling
- Sub-meter positioning available



RAISING THE **STANDARD**



For more information:
http://www.saveourlake.org/beach_sweep.htm.

Annual Louisiana Beach Sweep and Inland Waterway Cleanup

**Saturday,
September 19, 2009**

**Presented by Toyota and is
held in conjunction with the
International Coastal
Cleanup sponsored by the
Ocean Conservancy**



Eni Petroleum

1250 Poydras Street
Suite 2000
New Orleans, LA 70113
Tel: (504) 593-7000
Fax: (504) 593-7745

1201 Louisiana Street
Suite 3500
Houston, TX 77002
Tel: (713) 393-6100
Fax: (713) 393-6205



**Shell has worked in partnership
with the NOGS for many years, and
is proud to count the society among
its closest business associates.**

The New Orleans Geological Society was organized in 1941 to foster scientific research and advance the science of geology. Particular emphasis is laid on the exploration for and production of petroleum and natural gas. Related objectives include encouraging the adoption of improved methods of exploration, disseminating pertinent geological and technological data, and maintaining a high standard of professional conduct among its members.

www.shell.com/us.sepc

SEI®

Seismic Exchange, Inc.

**Strategic Speculative Surveys
Geophysical Data Marketing & Management**

Your
Full Service
National
Seismic Data
Marketing Firm

New Orleans
Dallas
Houston
Denver
Oklahoma City
Corpus Christi
Tulsa

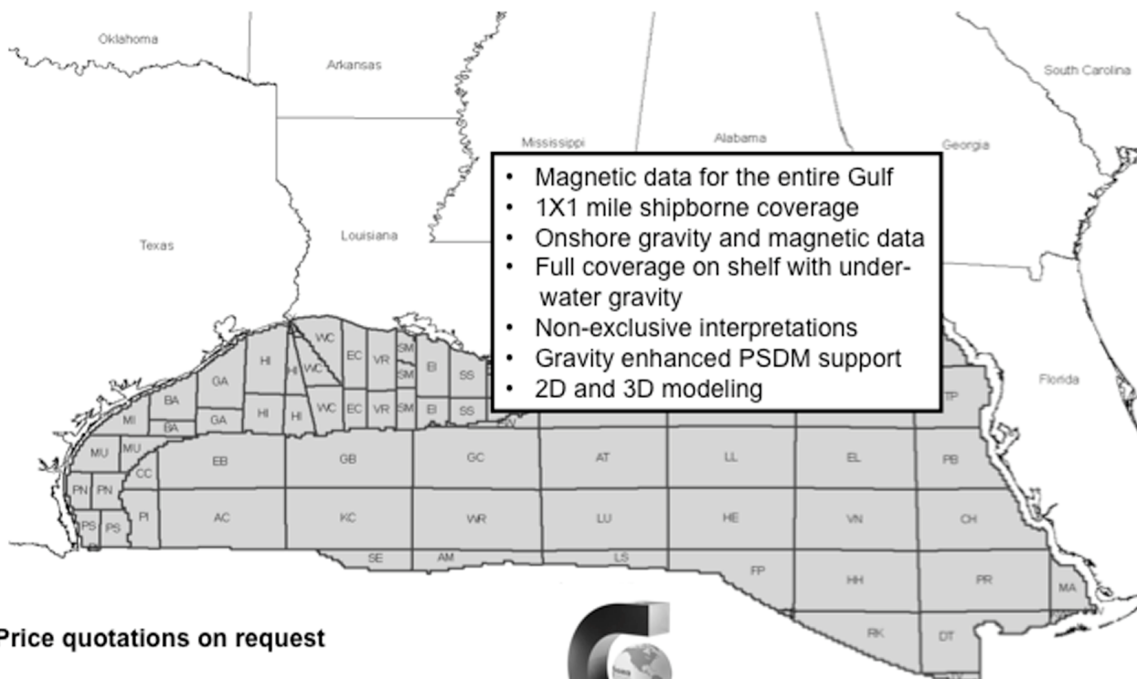
201 St. Charles Avenue, Suite 4300, New Orleans, Louisiana 70170-4300
Telephone 504.581.7153 Fax 504.581.9591
www.seismicexchange.com



Fugro Gravity & Magnetic Services

LAND • AIRBORNE • UNDERWATER • SHIPBORNE

The most complete coverage Onshore and Offshore Gulf of Mexico



Price quotations on request

Fugro Gravity & Magnetic Services

www.Fugro-GravMag.com

Tel: 713-369-6123



Gravity Inspired. Magnetically Inclined.



100 Northpark Blvd.
Covington, LA 70433

(985) 773-6000

"Serving the Oil & Gas Industry Since 1983"

Geological,
Geophysical &
Land Drafting

Anthony Catalanotto

President

Stefani Kelone

Drafting and Design



Geo-Draft, Inc.

A Professional Drafting & Graphics Firm

3349 Ridgeland Drive □ Suite 202 □ Metairie, LA □ 70002

Office: (504) 836-2882 Fax: (504) 836-2877

geodraft@bellsouth.net



LaBay
Exploration Co., L.L.C.

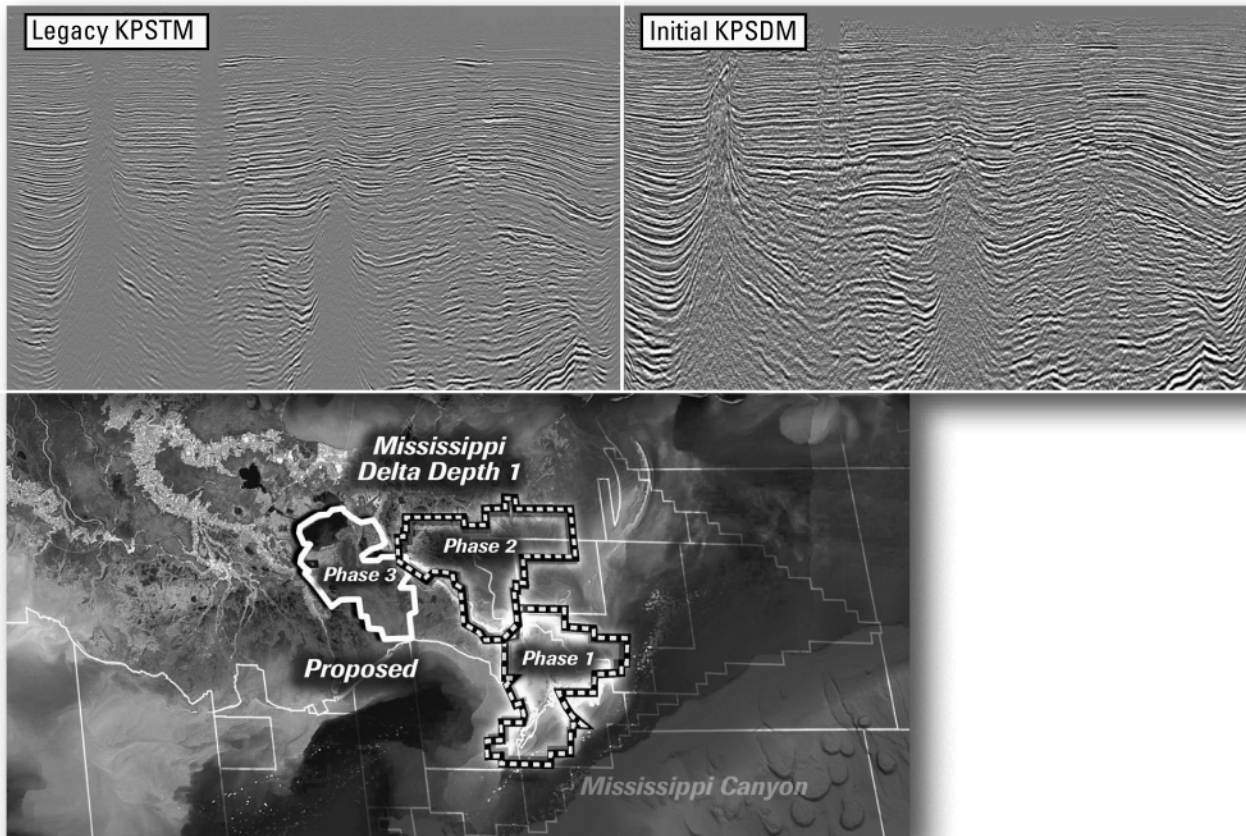
111 Veterans Memorial Blvd.,
Suite 1550
Metairie, Louisiana 70005

www.labayexploration.com

Office (504) 371-5967
Fax (504) 371-5969

*This advertising space is
available! Contact the
NOGS office.*

Improved depth imaging in the Mississippi Delta



In the Mississippi Delta region, WesternGeco is utilizing state-of-the-art processing designed to eliminate fault shadows and enhance deep imaging. The Mississippi Delta - Depth 1 survey, now in progress, incorporates the processing and remigration of twelve legacy surveys covering 1,855 square miles. High-quality time imaging using relative amplitude anisotropic Kirchhoff prestack time migration will be followed by improved structural imaging utilizing anisotropic Kirchhoff prestack depth migration.


To learn more about this and other Multiclient products, call +1 713 689 1000.


www.multiclient.westerngeco.com/la


Multiclient to the Power of E



A Company that Shines

 Geophysical Products

 Geological Products

 Imaging Services



TGS has been providing best-in-class multi-client data and services to successful E&P companies for over a quarter century. Our geophysical and geological data products are distributed around the globe and include one of the youngest and best targeted multi-client seismic libraries, extensive magnetic and gravity data, the industry's largest global database of digital well logs, and regional interpretive products. We also provide high-end depth imaging services to help resolve complex seismic imaging problems. Together, our products and services give you a more complete picture of the subsurface to help your exploration program *shine*.

For more information, visit www.tgsnopec.com today.



Geological
Products



Geophysical
Products



Imaging
Services

www.tgsnopec.com

NORWAY +47 66 76 99 00 | USA +1 713 860 2100 | UK +44 (0) 1234 272122 | AUSTRALIA +61 8 9480 0000 | RUSSIA +7 495 959 8117
©TGS-NOPEC Geophysical Company. All Rights Reserved.

New Orleans Geological Auxiliary News

I am happy to report that I have once again been given the opportunity to serve as president of the New Orleans Geological Auxiliary for the upcoming year. Being involved with the Auxiliary for the past several years has been such an enjoyable and meaningful experience for me that I would like to invite those of you who have not yet joined or who have been inactive to come socialize with us and have fun at the following planned events.

We will begin our new year on September 9th with a luncheon at the lovely home of Bob and Joan Sylvester in River Ridge. This event will be co-chaired by Jean Jones, Ruth Ingram, and Dorothy Jean Hill. This is always an extra special occasion as it gives all of us a chance to catch up on summer happenings, as well as the opportunity to get acquainted with new members.

On November 11th, the Auxiliary will be dining at Salvatore's in Metairie. Be assured that Peggy Rogers, Mary Walther, and Earleen Rodan will plan a lovely and delicious luncheon for this event.

We'll be "crossing the lake" for our Northshore Luncheon at N'Tini's Restaurant on February 3rd. Co-chairs, Pat Williamson and Mary Collier, will make certain that this will be an enjoyable day for all. (Shoppers' Alert – Chico's and Talbot's are just a few steps away!!)

Trez and Jim Zolkiewicz have generously offered their beautiful home for our Spring Social which will be held on March 27th. Trez, with the help of Jean Jones and Alma Dunlap, will do their best to make this a special occasion for all of us and our spouses or significant others.

Our 2009-2010 year will conclude on May 19th with our Installation Luncheon at Chateau Country Club. Susie Baker and June Perret will make sure that it will be a wonderful day in honor of our incoming slate of officers and directors.

In addition to these NOGA events, the Auxiliary is also happy to once again be able to help NOGS with their social plans. A committee, consisting of Jean Jones, Beverly Christina, Judy Lemarie, Amber Klekamp, Susie Baker, and myself, has been formed to assist with the planning of the NOGS Christmas Party and Kick-Off.

I'd like to take this opportunity to extend a BIG thank you to all who will be involved in making this year an enjoyable one. Remember, if you are not yet a member of NOGA, please consider joining us. Send in the attached application now and mark your calendar for a fun-filled year!

Linda Peirce,
President

NOGA Application Form

Dues: \$25.00

Name _____

Home Address _____

Home phone _____

Husband's Name _____

Husband's Company _____

*Please make check payable to New Orleans Geological Auxiliary and
mail with application to:* *Judy Lemarie'*

2 Yosemite Dr

New Orleans LA 70131

13th Annual Gulf of Mexico **Deepwater** Technical Symposium

August 27th and 28th - 2009

<http://www.deepwaternola.org/swf/deep.html>

Deepwater Gulf of Mexico case studies
and key technology sessions involving

- Geoscience
- Drilling • Completions
- Production Systems
- Reservoir / Economics
- HS&E / Regulatory
- Management Panel Discussion
- Exhibition Hall
- Student Poster Session

**The Hilton
Riverside
New Orleans**



<http://www.nogs.org/>

In conjunction with the

- American Association of Drilling Engineers
- Society of Petroleum Engineers

NOGS - Host for the 2010
AAPG Convention
April 11-15

New NOGS
Members
June 2009

Mary S. Ellison
UNO - Student
Dept of Earth and Envir. Sc.
2000 Lakeshore Dr
New Orleans, LA 70148
504-280-6325

Carol Butler Freeman
AECOM
Environmental Scientist
Ste 1860, 1555 Poydras St
New Orleans, LA 70112
504-592-3584

Bay Salmeron
UNO - Assistant Professor
Dept of Earth and Envir. Sc.
2000 Lakeshore Dr
New Orleans, LA 70148
504-280-1392

REINSTATED

Paul Weimer
University of Colorado
Geology Dept
Boulder, CO 80309
303-492-3809



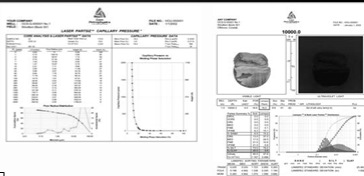
*Important
DATE!*

**October 2
NOGS Kick-Off Party
6:30-9:30 PM
at
Tom and Amber Klekamp's home
in Beau Chene, Mandeville**



Sidewall Core Specialists

Experts in Small Sample, Laminated and Shaly Sand Analysis



Laboratory Services:

- Core / Log Integration
- Laser Enhanced Permeability
- Porosity
- Fluid Saturations
- Measured Descriptions
- Critical Water
- Capillary Pressure Simulation
- UV Photography /Digital Images
- Lamination Characterization
- NMR Measurements
- Petrology

Core Lab has made many improvements to sidewall core testing which have had a positive synergistic effect on overall data quality.

Laser particle size analysis, Lamination specific analysis, UV-Visible Spectroscopy, lamination classification, Photospec summary reports, digital data bases via our website and capillary pressure simulation are all innovations introduced by Core Lab to help our clients obtain maximum benefit from their samples and analyses.



Core Laboratories 504-733-6583

**NOGS thanks our
sponsors for their support:**

GOLD LEVEL SPONSORS:

CHEVRON

LA BAY EXPLORATION CO, LLC.

**SPECIAL THANKS TO
DIVERSIFIED WELL LOGGING**

SURVIVOR™

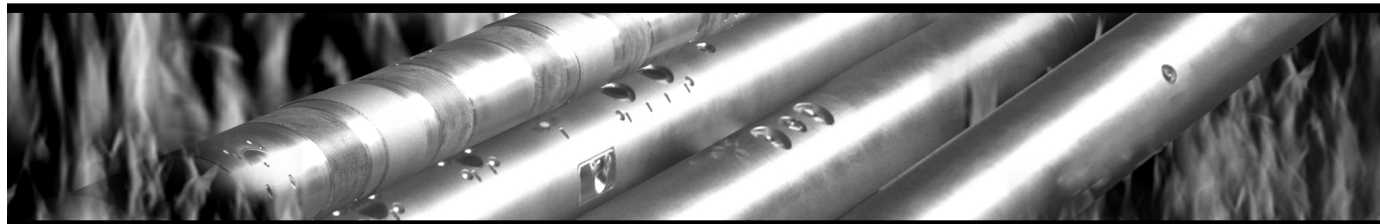
LOGGING-WHILE-DRILLING SUITE

The SURVIVOR™ Suite uses our highly reliable HDS-1 Directional Gamma Ray technology, Array Wave Resistivity tool, Slim Density Neutron Standoff Caliper tool and our Dynamic Pressure Module to create a complete system for logging in hostile drilling environments.

Temperature Rating.....350°F (175°C)

Pressure Rating25,000 psi

Logging Capacity300+ circulating hours



RELIABILITY. ACCURACY. VERSATILITY. WE DELIVER.

e-mail: pfmarketing@pathfinderlwd.com

www.pathfinderlwd.com

© 2006 Pathfinder Energy Services, Inc. All rights reserved.

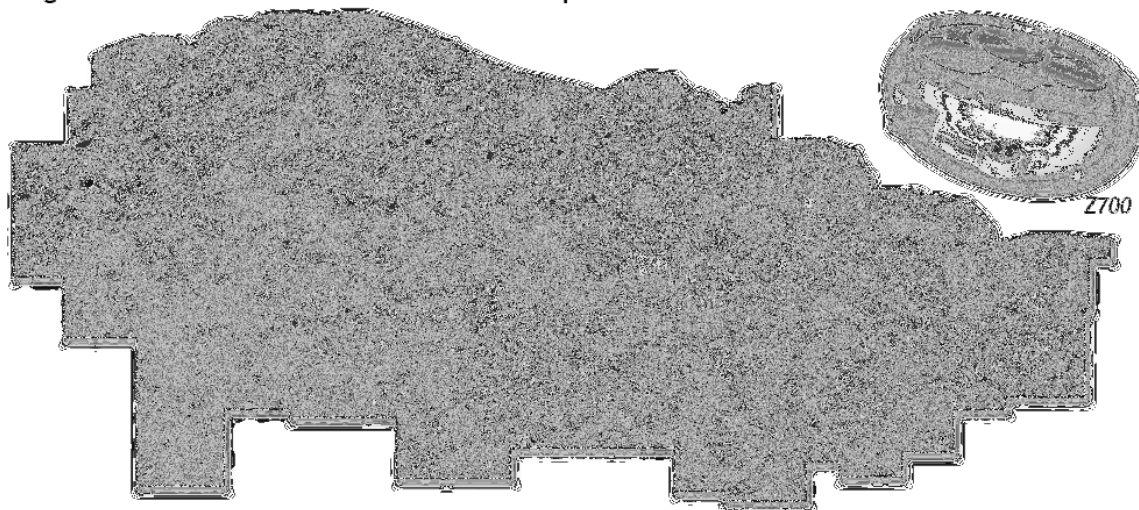
PATHFINDER®



At Fairfield the future is now.

Our updated seismic vessels equipped with Fairfield's Z700 ocean bottom node systems will be fully operational in the Gulf of Mexico during 2009. By utilizing longer offsets and the continuous recording capability of Z700, Fairfield will be able to image data to unprecedented depths of over 75,000 feet.

By the end of 2009 our entire database will have been processed using Curved Ray Migration and an additional 500 blocks of depth data will have been added.



The Future begins today. Don't be left in the past.

SEISMIC
SYSTEMS

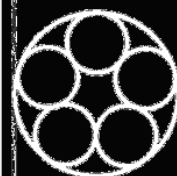
DATA
ACQUISITION

DATA
PROCESSING

DATA
LICENSING

281 275 7500

fairfield.com



Fairfield
INDUSTRIES

THE NEW ORLEANS GEOLOGICAL SOCIETY MEMORIAL FOUNDATION, INC.

The Memorial Foundation is an IRS Tax Exempt Code #501 (c)(3) organization. The Federal I.D. is: 72-1220999. Please consider making your donation prior to the close of this year's fiscal cycle which is September 30, 2009. Your individual support in any amount will help meet the IRS Guidelines for our Foundation. *Thanks!*

\$15,000 AND ABOVE

Olga Braunstein Succession

Gibbett Hill Foundation

*In Memory of Steve & Marion Millendorf, William J. Prutzman,
Roger G. Vincent & Ron Youngblood*

\$10,000

George W. Schneider, Jr. and Family

In Memory of George W. Schneider, Sr.

\$2,000 TO \$3,000

NOGS Golf Tournament May 2008

In Memory of Bill Craig

\$250 TO \$499

Carlo C. Christina

In Memory of Al Gilbreath

Fotiades Mineral Interests

Julie Fotiades, Joan Fotiades

Evelyn Fotiades Poulos

In Memory of George W. Schneider, Sr.

Kathy King Family

In Memory of George W. Schneider, Sr.

UP TO \$249

Donald I. Andrews

In Memory of Ray F. Havard

In Memory of Harlan (Lanny) Northcott

Robert J. Ardell

In Memory of Dr. Gordon Frey

Mr. and Mrs. Wesley Barton

In Memory of Thomas A. Cullinan

Abraham Biadgelgne

Maurice N. Birdwell

In Memory of Texaco

Hilary James Brook

Jack G. Bryant

Rob Burnett

F. Robert Bussey

In Memory Robert S. Kline

J. Sybil Callaway

Chevron

Matching Funds

Arthur F. Christensen

Ellen F. Clark

James S. Classen

In Memory of Thomas A. Cullinan

In Memory of George W. Schneider, Sr.

Clarence F. Conrad

Charley Corona

In Memory of McLain Forman

In Memory of Professor Hubert Skinner

Trudy and Charley Corona

In Memory of Thomas A. Cullinan

Michael A. Danahy

M. R. "Bob" Douglass

In Memory of Jack Read

Merle J. Duplantis

Exxon Mobil Matching Funds

\$7,000 TO \$9,000

Paul C. Mc Williams

\$1,000

John M. Henton, Jr.

In Memory of Dr. Gordon Frey

Bill Schneider Family

In Memory of George W. Schneider, Sr.

Susan King Family

In Memory of George W. Schneider, Sr.

John C. Kuczewicz, Jr.

In Memory of Bill Craig.

Niles R. Faulk

Michael N. Fein

Mark J. Gallagher

Peter G. Gray

In Memory of Thomas A. Cullinan

Angela M. Hessler

Bernard L. Hill, Jr.

Owen R. Hopkins

Dan E. Hudson

Thomas A. Hudson

Kenneth Huffman

Jeffrey E. Jandegian

Arthur H. Johnson

In Memory of George W. Schneider, Sr.

Tom Klekamp

Reuben J. Klibert, Jr.

William J. Malin

Jeannie F. Mallick

George M. Markey, Jr.

Michael L. Merritt

Robert G. Murphy

In Memory of Thomas A. Cullinan

New Orleans Geological Auxiliary

Russell H. Nordwell

Richard A. Olsen

In Memory of Richard W. Boebel

In Memory of Robert W. Sabate'

Teresa M. O'Neill

In Memory of Brian J. O'Neill

Linda and Bill Peirce

Edward B. Picou Jr.

In Memory of Dr. M. Gordon Frey

In Memory of Brian J. O'Neill

Richard D. Provensal

FONO FUND

The FONO Fund accepts contributions that are invested and the income dedicated to assure sufficient financial resources will always be available to maintain the NOGS business office. Contributors are reminded that donations to the FONO Fund are not covered by the IRS 501 (c)(3) tax exempt classification and should be reported as a business expense on your IRS tax report.

UP TO \$250

Woods W. Allen, Jr.

Donald I. Andrews

Alfred H. Baker Jr.

Philip Beron, Jr.

Joseph E. Boudreaux

Hillary James Brook

Jack G. Bryant

J. Sybil Callaway

Anthony Carolla, Jr.

Arthur F. Christensen

James S. Classen

Richard P. Colomes

John Dombrowski

Merle J. Duplantis

Richard A. Edmund

Niles R. Faulk

Michael N. Fein

Laurens Gaarenstroom

Mark J. Gallagher

Arthur J. Garden

Duncan Goldthwaite

Peter G. Gray

James A. Hartman

In Memory of Brian J. O'Neill

Bernard L. Hill, Jr.

Owen R. Hopkins

Thomas A. Hudson

Kenneth Huffman

C. M. (Max) Jacobs

Robert M. Jemison, Jr.

Paul Jurik

Terry Keegan

Tom Klekamp

Reuben J. Klibert, Jr.

William J. Malin

Jeannie F. Mallick

George M. Markey, Jr.

James A. McCarty

Robert H. Monahan

Robert G. Murphy

William J. O'Leary

Richard A. Olsen

William S. Peirce

Jaser N. Rafidi

James P. Raymond, Jr.

C. R. Rondeau

George D. Severson

Rudolf B. Siegert

Diana "Dee" E. Smith

Raymond Stephens

Scott A. Wainwright

Roy C. Walther

Robert C. Weissmann

William M. Whiting

Louis E. Willhoit, Jr.

Thomas V. Wilson

Jim Zotkiewicz

CONTRIBUTIONS FOR BOTH FUNDS
THROUGH JULY 2, 2009.
DONATIONS ARE LISTED FOR ONE YEAR.

Edmund L. Russell

George D. Severson

Robert C. Shoup

Rudolph B. Siegert

Daniel L. Smith

Diana "Dee" E. Smith

John D. Silvernail

In Memory of Colles C. Stowell

Dr. J. O. Snowden

Raymond O. Steinhoff

In Memory of Hubert C. Skinner

In Memory of Harold E. Vokes

Stephen Szydluk

Scott A. Wainwright

Roy C. Walther

Arthur S. Waterman

In Memory of T. Wayne Campbell

William M. Whiting

Louis E. Willhoit, Jr.

Armour C. Winslow

In Memory of Rita Menzel

Winslow

Frances A. Wiseman

In Memory of Steve Widdicombe

Jim Zotkiewicz

In Memory of Bill Craig

Robin A. Broussard

Chevron

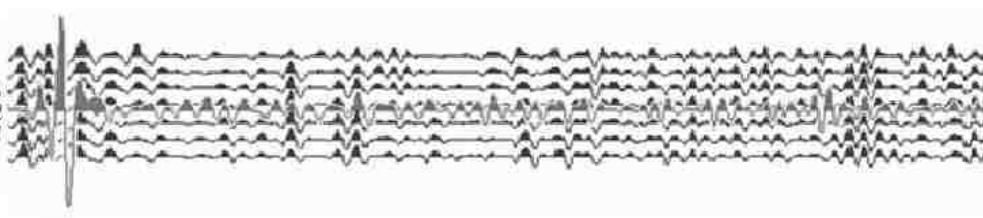
Bernard L. Hill, Jr.

Jeff Jandegian

John C. Scheldt

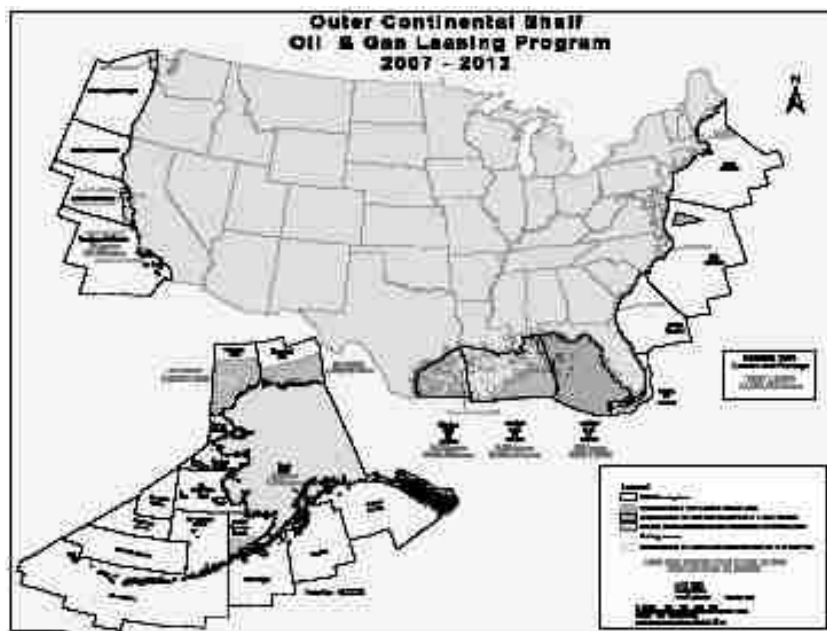
Candace V. Strahan

In Memory of James Strahan



The Southeastern Geophysical Society
presents
**Exploration Offshore USA OCS:
Opening the Next Frontier?**

**SGS Technical Symposium
November 12, 2009
New Orleans, Louisiana**



- Offshore Virginia has been opened.
- When will the potential lifting of other OCS areas result in drilling?
- What is the potential for hydrocarbon accumulations?
- What will the new President and Congress do?

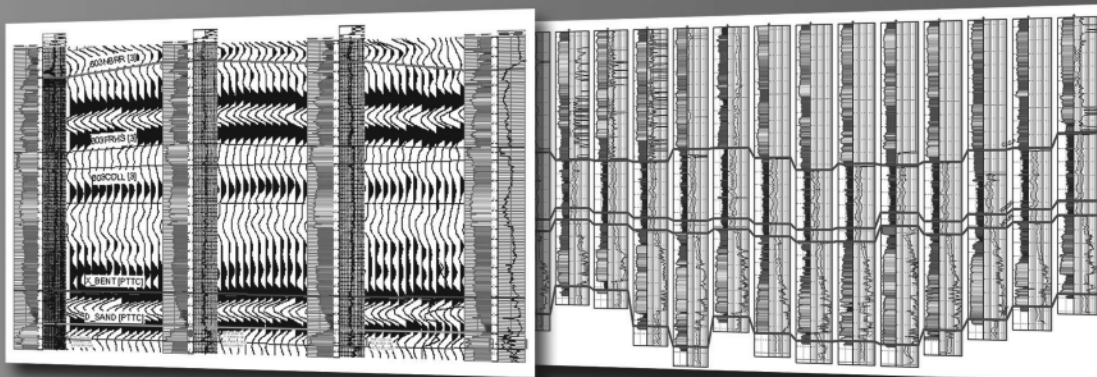
Call for presenters/sponsors – if you or your company would like to present a lecture or sponsor the symposium – contact Wayne Cook at wcook@seitel.com or Eric Zimmermann at ericz@lbg.com

Define your geological model faster than ever before

NO MORE WAITING! Available today from IHS, easy and affordable access to one of the largest U.S. digital log collections

- More than 185,000 LAS files with over 1.5 million curves
- Regional subscription packages for today's active play areas
- Indexed to IHS well and production data
- Linked to the IHS Enerdeq® Browser for quick regional studies and log selection
- Available via IHSLogNet.com or on DVD
- Ready to use in PETRA and other log packages

Request a free 2' x 3' IHS digital log coverage map at ihs.com/energy/DigitalLogs



Use PETRA® to integrate digital log, well, production, perf, seismic and tops data. IHS is the only company to provide you with the complete picture

Why wait? Subscribe today! Call 888.OIL.DATA (645.3282) or e-mail sales.energy@ihs.com



The Source
for Critical Information and Insight™



Shoreline Gas Inc.
www.shorelinegas.com
 Full Service Natural Gas Marketing



Sydboten & Associates, Inc.
*Geological and Geophysical Consulting,
 3-D Seismic Interpretation*

Ben D. Sydboten, Jr. CPG

124 Heymann Blvd., Suite 202
 Lafayette, LA 70503

Office (337) 234-5288
 Cell (337) 234-5491

ATWATER CONSULTANTS, LTD.

REGISTERED AND CERTIFIED PETROLEUM PROFESSIONALS

GEOLOGICAL, ENGINEERING, GEOPHYSICAL,
 TRAINING AND EXPERT WITNESS SERVICES

3525 Hessmer Ave, Ste 304
 Metairie LA 70002

Tel. (504) 581-6527
 Fax (504) 524-7798

Please support NOGS advertisers!



626 E. Kaliste Saloom
 Lafayette, LA 70508

16900 Greenspoint Dr, Suite 225-S,
 Houston, TX 77060

www.stoneenergy.com



CIMAREX ENERGY CO.

GULF OF MEXICO REGION
 GOM, SE La., N. La., MS, AL

1100 Poydras St.; Suite 1100

New Orleans, Louisiana 70163

504-586-1815 / Fax 504-586-9035

Keith Gourgues
 Region Manager

NORTHCOAST OIL COMPANY

610 E. Rutland St.
 Covington, LA 70433
 (985) 898-3577
 (985) 898-3585 FAX

Jack M. Thorson
Eric C. Broadbridge
J. Daryl Gambrell
Raymond W. Stephens

(832) 242-6000 (O)
 (713) 917-0493 (O)

(504) 931-7506 (C)
johnjurasin@jurasinoilgas.com

JURASIN OIL & GAS

9700 Richmond Ave., Suite # 124
 Houston, TX 77042-4821

JOHN M. JURASIN
 President

Cert. Pet. Geologist #4284
 Cert. Prof. Earth Scientist #1961

Collarini Energy Staffing

Full-Time and Temporary Personnel

Facilities • Drilling • Production • Reservoir Engineering
 Land and Legal • Geoscience • Information Technology •
 Health and Safety • Management • Supply Chain
 Accounting • Administrative Support

11111 Richmond Ave., Suite 126
 Houston, Texas 77082

832-251-0553



www.collarini.com

Collarini Associates

Reservoir Engineering
 Oil & Gas Property Evaluation
 3-D Seismic Interpretation
 Integrated Field Studies

832-251-0160
 504-887-7127

Houston
 New Orleans

NEW AVO MODEL TURNS HEADS!

[She Must Have Used **KINGDOM[®] 8.3!**]



Be the envy of your neighbors with **KINGDOM 8.3.**

New KINGDOM 1D Forward Modeling allows geoscientists to conduct advanced “What-If” analysis on pre- and post-stack data. And while the interface is intuitive enough for beginners, it is powerful enough for experts.

You can instantly change geologic properties such as P- and S-velocity, density, thickness, porosity, and Poisson’s Ratio. Interactively substitute fluids using the Biot-Gassmann method. Control the precise makeup of pore fluids by adjusting fluid properties such as salinity, gas gravity, GOR, and API gravity.

Best of all, it’s integrated in one executable, ensuring you never have to switch in and out of multiple applications to finish your workflow.

With KINGDOM 8.3, now every geoscientist can pursue a career in modeling!

See the full fall lineup from SMT, the global market leader for PC-based interpretation. View our webinar on What’s New In KINGDOM 8.3 at www.seismicmicro.com/smt-model7


Call your sales representative TODAY about “Introductory Pricing” on this new module.

Intuitive. Integrated. Interpretation.

USA +1 (713) 464-6188 **Canada** +1 (403) 303-3365 **Colombia** +57 (1) 618-0239

Russia +7 495 980 89 82 **Singapore** +65 6220 1089 **UK** +44 (0) 20 8240 6524



ANSYTHE Donald I. Andrews 504-887-3432 	D-O-R ENGINEERING, INC. 3-D and Geoscience Services 120 Oil Center Dr., Bldg. 12 P.O. Box 51707, Lafayette, LA 70505 Bus. (337) 233-2378 Fax (337) 233-2907
THE BOEBEL COMPANY Oil and Gas Investments 170 Broadway Street, Suite 321 New Orleans, LA 70118 (504) 866-4313	EDWARD B. PICOU, JR. Consulting Micropaleontologist - Retired 228 St. Charles Ave., Suite 1330 C New Orleans, LA 70130 Bus. (504) 529-5155 Res. (504) 282-3096
BOO-KER OIL & GAS CORP. Gray S. Parker 826 Union, Suite 300 New Orleans, LA 70112 Bus. (504) 581-2430 Fax (504) 566-4785	H. WARREN BELL Oil and Gas Exploration 2500 Tanglewilde, Suite 485 Houston, TX 77063-2126 Bus (713) 266-7297 Fax (713) 266-7298
C & R EXPLORATION, INC. Carlo C. Christina Lawrence G. Ringham	PHELPS GEOSCIENCE Onshore Gulf of Mexico Geology and Geophysics Prospect Generation and Evaluation Houston, TX jsfphelps@yahoo.com (281) 398-5208
C. R. RONDEAU Petroleum Geologist 119 W Southland Ave. Ironwood, MI 49938 Res. (906) 932-4692	RAFIDI OIL AND GAS, INC. Jaser N. Rafidi, President 4415 Shore Dr., Suite 202 Metairie, LA 70006 Bus. (504) 722-2942 Fax (504) 888-5539; Res. (504) 888-1661
CLASSEN EXPLORATION, INC. James S. Classen Looking for close in deals P.O. Box 140637 Boise, ID 83714 classenllc@msn.com Bus. (208) 854-1037 Fax (208) 854-1029	ROY C. WALTHER Petroleum Geologist 2421 Prancer Street New Orleans, LA 70131 Bus. (504) 392-8513 Res. (504) 392-9332
<i>This advertising space is available!</i> <i>Contact the NOGS office.</i>	TONY CAROLLO Consulting Geologist Unitization Geosteering Field Studies 1701 Peach Street Metairie, LA 70001 Bus. (504) 885-0004 Res. (504) 885-6829

UNO Fall Courses!

Sequence Stratigraphy

Mondays 4:30 - 7 pm

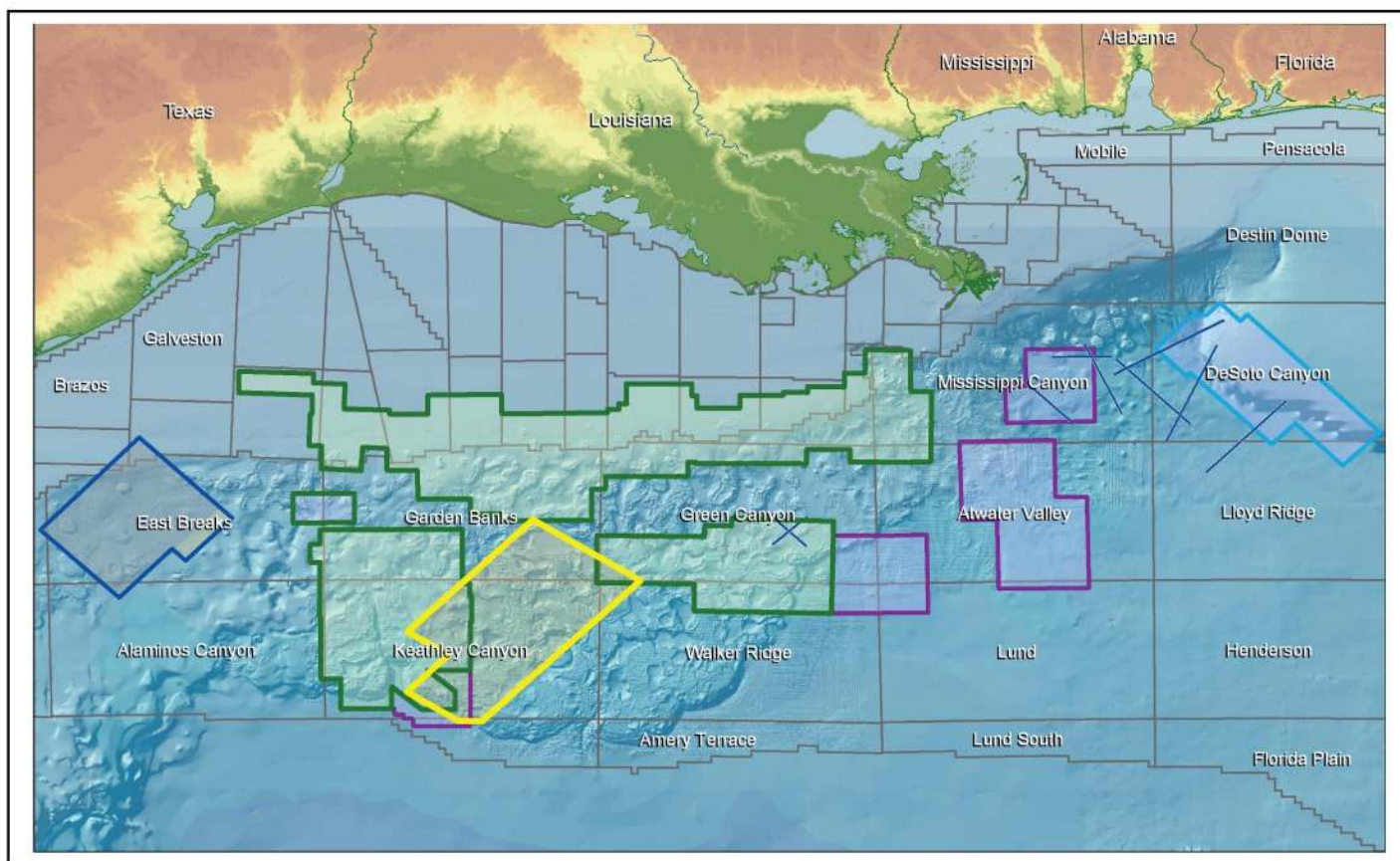
Dr. Royhan Gani

Introduction to the Petroleum Play

Saturdays 9 am -2 pm

Dr. Tim Matava

Watch your email for details



PGS Gulf Of Mexico Data Library

Challenging Times Require Imaginative Solutions - PGS Your Creative Business Partner

- Newly Reprocessed PSDM - Kirchhoff, Beam & WEM
 - Wide-azimuth - Kirchhoff, Beam & WEM
 - Narrow azimuth
 - Proposed Wide Azimuth – Anisotropic Beam and RTM
 - Narrow Azimuth Anisotropic Kirchhoff, Beam and WEM
- in cooperation with **TGS**

Contact your local PGS representative for more information

Houston
Tel: +1 281 509 8000
Fax: +1 281 509 8500

Oslo
Tel: +47 67 52 6400
Fax: +47 67 52 6464

London
Tel: +44 1932 37 6000
Fax: +44 1932 37 6100

A Clearer Image
www.pgs.com



NEW ORLEANS GEOLOGICAL SOCIETY



810 Union Street, Suite 300
New Orleans, LA 70112-1430

WWW.NOGS.ORG

MARINE PROPERTIES, LLC BERKSHIRE EXPLORATION CO.

MONTE C. SHALETT, CPL, PRESIDENT

3030 Lausat Street
Metairie, LA 70001-5924

BUS. (504) 831-7779
FAX. (504) 831-8315

PCI

Paleo Control, Inc.

Houston, Texas
713-849-0044

Drilling Wells, Studies and Data Base

Loyd Tuttle

Frio, SE Texas

Bob Liska

Wilcox, S and SE Texas

Jim Thorpe

Miocene and Cam-Miogyp



SEE YOUR DATA IN A WHOLE NEW LIGHT!

Take the pressure out of exploration
and drilling by seeing what you
are going to encounter.



eSeis

www.e-seis.com
713.531.1447

- Lithology & Fluids
- Depositional Facies
- Pore Pressure from V & Q
- Well Planning Consultation

