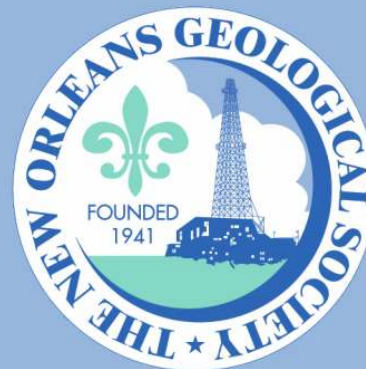


NOGS LOG



April 2009

Volume 49, Number 10

Upcoming Events and Activities

April 6 - NOGS Luncheon

*** At the Holiday Inn Downtown Superdome ***

Free validated parking in hotel garage

Guest speaker Bernie Regel, Chevron, will present "4D (Time Lapse) Seismic: Chevron Gulf of Mexico Examples For a Value-Added Reservoir Management Tool."

(See page 7 for Abstract and Biography)

HOLIDAY INN DOWNTOWN SUPERDOME ADMISSION:

Check with concierge or
front desk for location

Lunch served at 11:30am

with reservation \$30.00

without reservation \$35.00

Student Member with reservation Free

April 17 - NOGS/SGS Summer Social

7:00PM at the Zephyr's Ballpark. See announcement on page 15.

April 27 - NOGS 2009 Annual Golf Outing

Money Hill Golf & Country Club in Abita Springs. See announcement on page 19.

April 29 - Petroleum Geology for Non Geologists

Shell Auditorium, Shell Building in New Orleans.. See announcement on page 11.

May 4 - NOGS Luncheon

Guest speaker Mark G. Rowan, Rowan Consulting, Inc., Boulder, CO, will present "Central Louisiana Deepwater: Structural Provinces and Depositional Patterns."

May 14 - NOGS Technical Seminar & Core Display

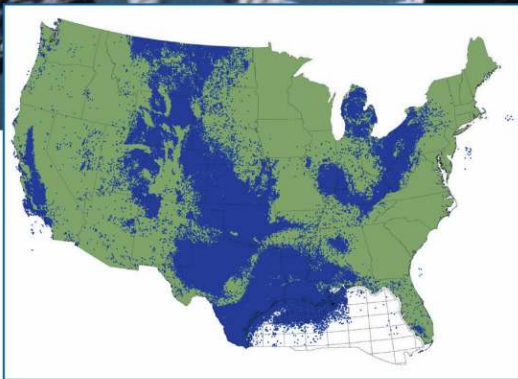
Shell Auditorium, Shell Building in New Orleans. See announcement on page 8.

May 14-16 - Petroleum History Institute 2009 Symposium

Caboose Motel in Titusville, PA. See announcement on page 18.

Introducing

LASSO



Lasso up all the digital LAS well log data you need from the industry's largest collection

With LASSO, lock in TGS' program rates on digital LAS well data from our US collection, growing at an unprecedented pace to more than 500,000 wells over the next several months. LASSO strengthens your exploration projects with the higher-order capabilities of increased digital well log use. LASSO digital data from TGS, the industry's well log data leader, is quality controlled and available online for immediate downloads.

For more information about LASSO, contact your TGS account representative or call 1- (888) LOG-LINE.



Geophysical
Products



Geological
Products



Imaging
Services

www.tgsnopec.com

NORWAY +47 66 76 99 00 | USA +1 713 860 2100 | UK +44 (0) 1234 272122 | AUSTRALIA +61 8 9480 0000

© TGS-NOPEC Geophysical Company. All rights reserved.

NOGS Office

Office Manager: Annette Hudson

Office Hours: 8:30am – 3:30pm on Monday-Wednesday-Friday

Tel: 504-561-8980 □ Fax: 504-561-8988

E-mail: info@nogs.org □ Website: www.nogs.org

The office is located at Suite 300, 810 Union Street, New Orleans, LA 70112.

Correspondence and all luncheon reservations should be sent to the above address.

Sent to press on March 30, 2009.

**BOARD OF DIRECTORS**

		Company	Phone	E-mail
President	William M. Whiting	Consultant	504-947-8495	bootscon@aol.com
Vice President	Allan Melillo	Chevron	985-773-6756	ajme@chevron.com
Secretary	Frances Wiseman	MMS	504-736-2912	frances.wiseman@mms.gov
Treasurer	James Swaney	MMS	504-736-2677	james.swaney@mms.gov
President-Elect	Tom Klekamp	Amber Resources LLC	985-845-4046	klekamp@bellsouth.net
Editor	Michael D. Miner	UNO	504-280-3866	mminer@uno.edu
Director 2009	Willis E. Conatser		504-469-2496	weconatser@aol.com
Director 2010	Michael M. Ledet		504-394-9636	mikeledet@cox.net
Director 2011	Scott A. Wainwright	Bret Exploration Co Inc	504-889-2700	scott_wainwright@hotmail.com

COMMITTEE

	Chairperson			
AAPG Delegates	Dave Balcer	Chevron	985-773-6725	dbalcer@Chevron.com
AAPG Student Chapter	Bobby Cosentino	Tulane University	504-495-9475	rcosenti@tulane.edu
AAPG Student Chapter	Scott Wessels	UNO	316-295-0800	scottwes@gmail.com
Advertising-Log	Jennifer Connolly	Shell	504-728-6411	jennifer.connolly@shell.com
Auditing	J. David Cope	Ankor Energy	504-596-3672	dcope@ankorenergy.com
Awards	Michael N. Fein	W & T Offshore	504-210-8148	mikef@wtoffshore.com
Ballot	James Swaney	MMS	504-736-2677	james.swaney@mms.gov
Best Paper	David E. Reiter	Energy Partners Ltd	985-893-8072	dreiter@eplweb.com
Continuing Education	TBA			
Employment Counseling	Paul J. Post	MMS	504-736-2954	paul.post@mms.gov
Entertainment	Tom Klekamp	Amber Resources LLC	985-845-4046	klekamp@bellsouth.net
Environmental	Daisy Pate	Eustis Geotechnical Eng.	504-613-5798	dpate@eustiseng.com
External Affairs	Michael A. Fogarty	Sylvan Energy, LLC	603-523-4808	mike.a.fogarty@gmail.com
Field Trip	David Garner	Shell	504-728-6154	David.Garner@shell.com
Finance and Investment	James Swaney	MMS	504-736-2677	james.swaney@mms.gov
Historical	Edward B. Picou, Jr.	Consultant	504-529-5155	epicou@bellsouth.net
Membership/Directory	Penne Rappold	Shell	504-728-4338	prappold@gmail.com
New Geoscientists (NGNO)	TBA			
Nominating	Alfred H. Baker, Jr.	Beacon Exploration, LLC	504-836-2710	abaker1006@aol.com
Non-Technical Education	Duncan Goldthwaite	Consultant	504-887-4377	DGldthwt@aol.com
Office Operations	Arthur H. Johnson	Hydrate Energy International	504-464-6208	artjohnson51@hotmail.com
Publications Sales	Edward B. Picou, Jr.	Consultant	504-529-5155	epicou@bellsouth.net
Photography	J. David Cope	Taylor Energy Co LLC	504-589-0419	dcope@taylorenergy.com
School Outreach	Thomas C. Bergeon	Century Exploration	504-832-3772	Tom.bergeon@centuryx.com
Scouting	Carol Rooney	Consultant Geologist	504-835-1909	carolbrooney@aol.com
Technical Projects	TBA			
Ad Hoc Committee on University Support	Michael J. Gallagher	Eni Petroleum	504-593-7480	Michael.Gallagher@enipetroleum.com

NOGS LOG STAFF

Editor	Michael D. Miner	UNO	504-280-3866	mminer@uno.edu
Editor-Elect	Elizabeth Petro	MMS	504-736-2866	liz.petro@mms.gov
Auxiliary	Susie Baker	NOGA	504-466-4483	abaker1006@aol.com
Info Tidbits	Clare Falcon	Schlumberger	504-592-5385	cfalcon2@new-orleans.oilfield.slb.com
Drill Bits	Paul J. Post	MMS	504-736-2954	paul.post@mms.gov
Layout	Jannette Sturm-Mexic			emailme@jannette.com
Webmaster	Edward B. Picou, Jr.	Consultant	504-529-5155	epicou@bellsouth.net

NOGS AUXILIARY

Officers		Phone	Directors	Year	Phone
President	Linda Peirce	504-393-7365	Ruth Ingram	2008-09	504-887-5404
1st Vice-President	Jean Jones	504-738-8091	June Perret	2008-09	504-881-9357
2nd Vice-President	Beverly Kastler	504-286-0879	Joan Sylvester	2008-09	504-738-2934
Secretary	Dolores Murphy	504-393-0878	Beverly Christina	2009-10	504-835-2383
Treasurer	Judy Lemarie'	504-393-8659	Peggy Rogers	2009-10	504-392-6323
Parliamentarian	Carol Andrews	504-887-3432	Judy Sabate'	2009-10	504-861-3179
Member-at-Large	Susie Baker	504-466-4483			

--- NOGS Contact List continued on page 10 ---

Higher Standards



Weatherford LABORATORIES

At Weatherford Laboratories, we hold fast to Higher Standards. Our purpose is to continually push past conventional solutions to find new and better ways to optimize oil and gas production.

■ By integrating seven entrepreneurial companies, we bring unsurpassed innovation to the industry. Our accomplishments include 50 new technologies, 45 original products, 35 industry awards, and 13 registered patents. Among our ranks are several luminaries of the industry, as well as scores of respected scientists who have authored hundreds of technical papers. ■ With 38 laboratories around the globe, our team raises the bar for wellsite sampling, core management services, geochemical analyses and evaluation of unconventional reservoirs.

At Weatherford Laboratories, we expect more from ourselves so you can expect more from us.

Weatherfordlabs.com

7
DYNAMIC
COMPANIES

50
NEW
TECHNOLOGIES

38
WORLDWIDE
LABORATORIES

CORPORATE OFFICES

ACS Laboratories Pty Ltd
Brisbane, Australia

OMNI Laboratories
Houston, Texas USA

ResLab Reservoir Laboratories
Trondheim, Norway

Humble Geochemical Services
Houston, Texas USA

TICORA Geosciences
Denver, Colorado USA

Baseline Resolution, Inc.
Houston, Texas USA

Hycal Energy Research Laboratories
Calgary, Alberta, Canada



from the President

March 4th was an interesting time spent at the Region Nine Science Fair at their new location in the Human Performance Center on the UNO campus, an ideal venue for the fair. Judges for NOGS special awards included Awards Chairman Mike Fein, Bill Whiting, Art Johnson, Dave Reiter, and Jim McCarty. A big improvement was apparent this year in the quantity and quality of Earth science projects in both the junior and senior levels. The NOGS judges also review environmental and energy-related projects, as well. We have a returning winner for the NOGS 1st place Senior division, Jordan Badeaux (Pegmatite's) a senior at John Curtis Christian School. A good portion of the six NOGS awards went to students from John Curtis Christian School. A few dedicated teachers make a big difference. The 1st place winners in the Senior and Junior divisions will be invited, along with their teacher, to a future NOGS luncheon. I find it interesting to step outside of our normal provenance to learn what our future, teachers, engineers, scientists, and doctors are thinking. I was pleased to be informed that playing solitaire on my computer is good for my blood pressure. Thanks to Mike Fein and another NOGS member, Carol Avery, for their outstanding effort in making the fair a huge success for many years.

I am happy to report that that over 21 NOGS members have signed-up to be VOLUNTEERS for AAPG 2010, with many more prospects to contact. This does not include the excellent efforts of Beverly Kastler and the NOGS Auxiliary (NOGA). NOGA is well organized and have set up their sub-committees for the social and tour events and their volunteer list is also growing. Volunteers will be needed for the information booths, field trips, short courses, technical sessions, and much more. Student volunteers and those with less than one-year employment may earn credit for a minimal payment (\$25). Contact Tom Hudson, Bill Whiting, Art Johnson, Nanyce Dawers, Mike Ledet, or Fran Wiseman to help out. The AAPG Leadership will be conducting a Town Hall Forum on April 20th and all NOGS and AAPG members are invited. The location and program is to be announced by individual invitation from the AAPG. Lets have a good turnout and give AAPG President Scott Tinker a New Orleans farewell.

Levee Board Commissioner and NOGS member, the Honorable Mike Merritt proposed and the NOGS Board approved the creation of an ad hoc committee to serve in an advisory capacity for the annual Geologic Facts of Life for Flood Protection symposia. Tentative members are Mike Merritt, Ed Picou, Dr. Steve Nelson (Tulane University), Dr. Mike Miner (UNO), John Lopez, Art Johnson and ex officio NOGS Board members. We are also looking for NOGS/SGS members with strong geophysical backgrounds to serve on this committee. NOGS has also been offered an opportunity to be an associate member of the ALBL (Association of Levee Boards of Louisiana); however due to concerns about our non-profit tax status we have tabled that motion for now.

I spoke too soon about the opening of Chevron's North Park facility to north shore NOGS members for our monthly meeting broadcast. New guidelines have been received and there will be no catered lunches at the North Park location. Our Chevron NOGS members have accordingly withdrawn their invitation. NOGS will continue to webcast our monthly meetings to the Chevron facility and NOGS members and guests.

On May 14th Dr. Royhan Gani's (new stratigraphy professor at UNO) seminar and core display will be held at the Shell Annex. See LOG cover for more details. Let's give Royhan a good NOGS welcome. (Cost \$50; Students \$25, some student sponsorships available via the NOGS office.)

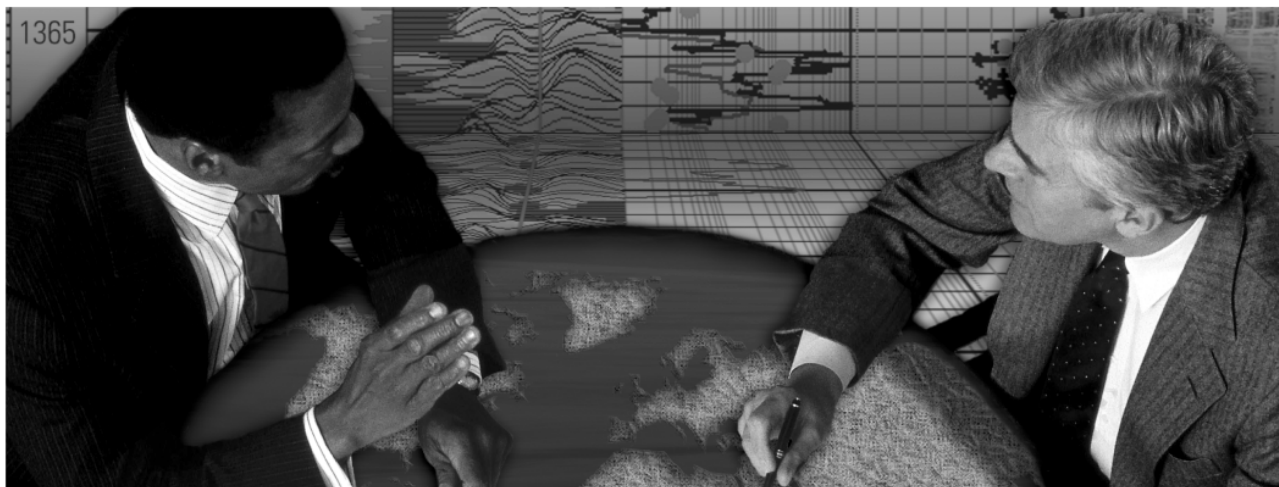
Please get your submittals into Tom Bergeon, Tom.bergeon@centuryx.com, for Vol. IV of Southeast Louisiana Oil and Gas Fields. I note with interest that the NOGS office recently received two royalty checks totaling over \$2,000 from AAPG Data Pages and the Texas Bureau of Economic Geology (BEG). These are from NOGS publications that are more than a decade old. This is a vehicle that keeps on paying dividends.

Bill

energyinformation

Business solutions for
the oil & gas industry

Schlumberger formation evaluation solutions deliver the answers you need. Our extensive portfolio of services, leading-edge technology, and advanced conveyance options keep you in communication with your well throughout its life cycle.



With formation evaluation technologies from Schlumberger, you can make the best decisions for optimized performance in every well.

The formation evaluation one-stop shop

Whether you are logging in open hole or behind the casing, our broad selection of services ensures the best solution for acquiring formation evaluation data. Tools can be conveyed while drilling or on wireline or pipe. We offer many specialized evaluation capabilities, from density, neutron porosity, and resistivity to borehole imaging, nuclear magnetic resonance logging, borehole seismic, formation pressure testing, and fluid sampling. Advanced triple-combo logging options include the VISION* formation evaluation and imaging-while-drilling services. Coupled with Pulse* telemetry and surveying services, the VISION family provides real-time formation evaluation data and enables optimum well placement.

High-speed wireline measurements are recorded with the Platform Express* logging services. The SlimXtreme* platform is designed for high-pressure, high-temperature environments and the ABC* Analysis Behind Casing services are used after casing is set.

Expert interpretation from the engineers and geoscientists of Schlumberger Data & Consulting Services brings all your data together to give you the answers you need. This expertise is available after logging is complete or as real-time two-way wellsite communication through the InterACT* real-time monitoring and data delivery system.

Schlumberger delivers leading-edge technology and interpretation expertise for all your formation evaluation needs, so every well benefits from the very best information.

For more information visit
www.slb.com/oilfield/formation_evaluation/

*Mark of Schlumberger

04-FE-114

Schlumberger

April 6 NOGS Luncheon Presentation

*** at the Holiday Inn Downtown Superdome ***

4D (Time Lapse) Seismic: Chevron Gulf of Mexico Examples For a Value-Added Reservoir Management Tool

presented by

Bernie Regel*

Chevron

ABSTRACT

Reservoir Management is the process of designing and implementing a plan to maximize the value of hydrocarbons in a reservoir. Three dimensional (3d) seismic is one of the most important, cost effective, and accepted tools in the asset team's toolkit for acquiring knowledge to incorporate into a reservoir management plan. Four dimensional (4D) seismic or time lapse seismic, is the repeat acquisition of an earlier 3D after sufficient production to cause changes in the seismic response. The additional knowledge derived from the interpretation of these changes can lead to modification of the reservoir management plan. Every asset team that uses seismic data should ask themselves "Can 4D improve our reservoir management plan?"

Chevron's Gulf of Mexico Business Unit has been using 4D in some capacity since 1995 and acquiring dedicated 4D since 2002. Dedicated 4D has been acquired at Genesis (2002), Petronius (2005), South Timbalier 52 (2005), and Arnold/Lobster (2006) fields.

These fields' reservoir management plans have benefited from 4D through improved waterflood surveillance, a better understanding of reservoir

continuity, identifying bypassed or unproduced reserves, and explanation of early water breakthroughs. Additional benefits include improved re-processing of legacy (baseline) 3D, better estimates of original in-place hydrocarbon volumes, a modern state of the art monitor (repeat) 3D, and input for geomechanical models used for well planning.

Determining the true value of data is always a difficult challenge. In mature fields it can take many years after the 4D is delivered for new wells to be drilled and produced to the point that the value of the data becomes quantified. Intangible value includes validation of the pre-4D reservoir management plan and a new post-4D reservoir plan including an updated reservoir simulation and earth model. Wells drilled after the 4D was available benefit from better placement, improved risk assessment, and narrower ranges of outcomes. This results in more efficient use of drilling capital.

*Co-Authors: Loren Bailey, Ellen Clark, Brad Davis, Ryan Guillory, Tom Hudson, Al Melillo, David Moore, Mike Murat, Chok Noibanchong, Melanie Perry, Paul Pizzo, Rusty Reeves, Ken Reynolds, Mark Sullivan, and Cathy Thibaul

BIOGRAPHY

Bernie Regel is a Staff Geophysicist with Chevron, presently working in the Deep Water Asset Team in the Gulf of Mexico Business Unit. He has a B.S. in Geology and an M.S. in Geophysics, both from Bowling Green State University. He started working

for Gulf Oil in 1979 and joined Chevron at the merger. He has worked in exploration, appraisal, and production throughout his 29 years in the industry, mostly in the Gulf of Mexico.

THE LUNCHEON RESERVATION DEADLINE IS APRIL 1 - CONTACT THE NOGS OFFICE

"And Looking Ahead..."

The next NOGS Luncheon will be May 4. Guest speaker Mark G. Rowan, Rowan Consulting, Inc., Boulder, CO, will present "Central Louisiana Deepwater: Structural Provinces and Depositional Patterns." Contact the NOGS office to make your reservation.

Technical Seminar & Core Display

Deltaic Reservoir Analog: Integration of Outcrop, Core, Ground Penetrating Radar, and Fluid-flow Modeling in Cretaceous Strata, Wyoming

May 14, 2009 9:00 AM–3:00 PM
Shell Auditorium, One Shell Square 701 Poydras, New Orleans

Presented by: Dr. M. Royhan Gani, Department of Earth and Environmental Sciences,
University of New Orleans

Cost per participant: \$50 for NOGS members and non-members, \$25 for students
(some sponsorships available through NOGS).

To reserve a spot or for any questions contact the NOGS office at info@nogs.org or
(504) 561-8980

Seminar Description

Despite the present global emphasis on deep-water exploration and reservoir characterization, much of current and projected global production remains in siliciclastic shallow- and marginal-marine reservoirs. Because of the dynamic interaction of fluvial and basinal (e.g. tides, waves, storms) processes, deltaic deposits are inheritably complex. Various outcrops and subsurface data were integrated to study a Cretaceous delta at the top of the upper Turonian Wall Creek Member exposed along the western flank of the Powder River Basin, Wyoming. Investigation was performed from pore-scale to parasequence-scale to document facies and architectural complexity, along with reservoir properties. Experimentally designed flow-simulations were used to examine effects of facies variability and bedding geometry on breakthrough time, sweep efficiency and upscaled permeability.

Regional sandstone isolith, facies, and paleocurrent maps help to reconstruct the paleogeography and show how the various architectural elements varied across the delta front. The channels, bars, frontal splays, and tidally modulated elements are found only near the distributary mouth, whereas the storm sheets occur extensively away from the distributary mouth. The external shape of the studied delta might be seen as controlled primarily by waves, but the internal facies architecture reveals a far more complex interaction of river, waves, storms, and tidal processes. This challenges the tripartite classification of deltas into river-dominated, wave-dominated, and tide-dominated end member types.

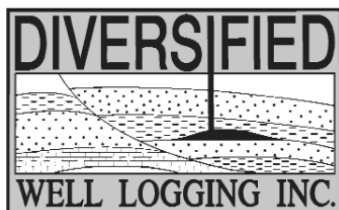
Detailed logging of ichnological variations in several deltaic parasequences are correlated with inferred short- and long-term changes in depositional processes, reflecting various proportions of river, flood, wave, storm, and tide influences that can translate into variable reservoir properties. For this, trend analysis of BI (bioturbation index) log is particularly useful.

The purpose of this seminar is to showcase the internal facies and architectural complexity of deltaic reservoirs. Additionally, display of cores will provide opportunity for the participants to get hands-on experience on how to identify facies, trace fossils, and sequence stratigraphic surfaces in shallow-marine strata.



Relax. We'll keep you posted.

Your rig is offshore and you are not. How do you know what's going on so many miles away? You know because we tell you. Daily or even hourly, Diversified Well Logging's engineers update you on the status of your rig. We are your eyes and ears, especially when it comes to deep water or high pressure, high temperature areas. Diversified offers 24-hour surface evaluation. We provide secure and customized real-time data communication, in-house research and development and 24/7 on-call support for our equipment and our engineers. Whether you have a 10-day job or 110-day job, we provide the specialized attention you require. So, relax. We're with you every step of the way.



Serving the Gulf Coast for over 40 years.

New Orleans • Lafayette • Houston • Dallas • Corpus

800.280.2096

711 West 10th Street • Reserve, LA 70084 • Phone: 985.536.4143 • Fax: 985.536.2427
sales@dwl-usa.com



**PALEO
DATA**

**FULLY INTEGRATED AND
CENTRALIZED BIOSTRATIGRAPHIC
SERVICES**

- ▼ Single-source biostratigraphic databases
for increased accuracy and consistency
- ▼ Integrated foram / nannofossil analyses
- ▼ Complete wellsite paleo services
- ▼ In-house sample preparation
lab for quality-monitoring
and efficiency
- ▼ Sample pick-up service

6619 Fleur de Lis Drive
New Orleans, LA 70124
(504) 488-3711

www.paleodata.com

MCMORAN EXPLORATION CO.



MCMORAN OIL & GAS

www.mcmoran.com

NYSE: MMR

16676 Northchase Dr.
Houston, TX 77060
(281) 539-7600
Fax: (281) 539-7655

1615 Poydras
New Orleans, LA 70112
(504) 582-4000
Fax: (504) 582-4155

110 Travis St., Suite 140
Lafayette, LA 70503
(337) 735-9150
Fax: (337) 735-9151

NOGS CONTACT LIST

--- continued from page 3 ---

MEMORIAL FOUNDATION


BOARD OF TRUSTEES

		Company	Phone	E-mail
2008-09 Chairman	Arthur H. Johnson	Hydrate Energy International	504-464-6208	artjohnson51@hotmail.com
2008-09 Secretary	William M. Whiting	Consultant	504-947-8495	bootscon@aol.com
2008-09 Trustee	David E. Balcer	Chevron	985-773-6725	dbalcer@chevrontexaco.com
2008-09 Trustee	George T. Froming	Consultant	504-799-1918	gtfroming@yahoo.com
2009-10 Trustee	Michael C. Fauquier			
2009-10 Trustee	J. David Cope	Ankor Energy	504-596-3672	dcope@ankorenergy.com
2010-11 Trustee	Timothy J. Piwowar	Shell	504-728-4066	tim.piwowar@shell.com
2010-11 Trustee	Michael N. Fein	W & T Offshore	504-210-8148	mikef@wtoffshore.com

AAPG DELEGATES


Term Ends

2009	David E. Balcer	Chevron	985-773-6725	dbalcer@Chevron.com
2009	William Whiting	Consultant	504-947-8495	bootscon@aol.com
2009a)	Nancye Dawers	Tulane University	504-862-3200	ndawers@tulane.edu
2009a)	David Cooke	MMS	504-736-2609	david.cooke@mms.gov
2011	Tom Hudson	Chevron	985-773-7163	tom.hudson@chevron.com
2011	Edward B. Picou, Jr.	Consultant	504-529-5155	epicou@bellsouth.net
2011a)	Brenda Reilly	Energy Partners Ltd.	504-799-4811	breilly@eplweb.com
2011a)	Robert Rooney	Century Exploration	504-832-3777	Robert.rooney@centuryx.com




SeaBird Exploration

Take a look at the *future* of
MARINE SEISMIC




www.sbexp.com
www.seabed.no

RAISING
THE **STANDARD**



- Autonomous 4C nodes rated to 3000 m
- Acoustic Communication/Data QC
- Best sensor orientation in the market
- Highest quality coupling
- Sub-meter positioning available



Dubai
T: +971 4 4271700

Houston
T: +1 281 556 1666

Oslo
T: +47 2240 2700

Trondheim
T: +47 7 3879500

Singapore
T: +65 9180 2605

PETROLEUM GEOLOGY FOR NON GEOLOGISTS

The New Orleans Geological Society is presenting a one day course on “Petroleum Geology for Non Geologists,” 8:30 AM to 3:30 PM on Wednesday April 29, 2009 in the Shell Auditorium, Shell Building, 701 Poydras Street, New Orleans. The course will consist of a brief introduction to Basic Geology, followed by a review of how oil and gas are formed, how they are concentrated into reservoirs, the geological and geophysical methods used in exploration, and an overview of drilling and completion practices.

This course should be of significant benefit and interest to anyone who in one way or another works with geologists and geological data, such as land personnel, secretaries, draftsmen and computer programmers and processors.

Instructors will be Duncan Goldthwaite - Consulting Geologist, Robert Branson - Consulting Geologist, Bruce Robertson - Consulting Geologist, and Devi Subramaniam- Drilling Engineer, Chevron.

Cost will be \$35.00 per participant. Course notes and mid-morning refreshments will be provided.

Persons interested can register by sending a check for \$35.00, made out to the New Orleans Geological Society, to:

New Orleans Geological Society
Ste 300
810 Union St
New Orleans LA 70112

When registering, please give your name, your work or home address and telephone number and company affiliation, if any.



Eni Petroleum

1250 Poydras Street
Suite 2000
New Orleans, LA 70113
Tel: (504) 593-7000
Fax: (504) 593-7745

1201 Louisiana Street
Suite 3500
Houston, TX 77002
Tel: (713) 393-6100
Fax: (713) 393-6205



**Shell has worked in partnership
with the NOGS for many years, and
is proud to count the society among
its closest business associates.**

The New Orleans Geological Society was organized in 1941 to foster scientific research and advance the science of geology. Particular emphasis is laid on the exploration for and production of petroleum and natural gas. Related objectives include encouraging the adoption of improved methods of exploration, disseminating pertinent geological and technological data, and maintaining a high standard of professional conduct among its members.

www.shell.com/us.sepc

SEI®

Seismic Exchange, Inc.

**Strategic Speculative Surveys
Geophysical Data Marketing & Management**

**Your
Full Service
National
Seismic Data
Marketing Firm**

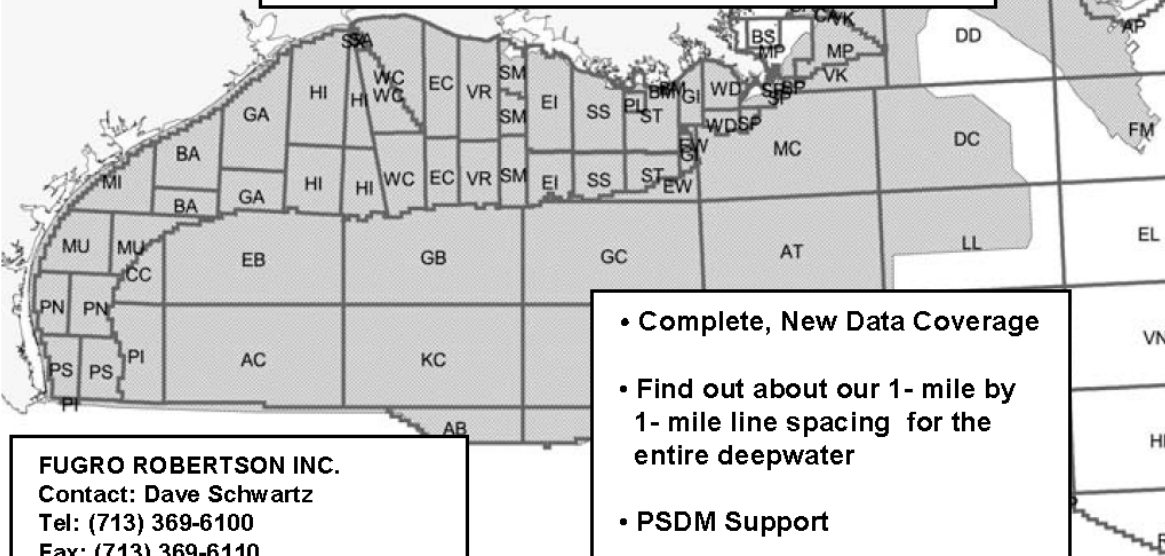
New Orleans
Dallas
Houston
Denver
Oklahoma City
Corpus Christi
Tulsa

201 St. Charles Avenue, Suite 4300, New Orleans, Louisiana 70170-4300
Telephone 504.581.7153 Fax 504.581.9591
www.seismicexchange.com

Robertson



**"The Place to Go"
For GOM Gravity Data and Interpretations**



FUGRO ROBERTSON INC.
Contact: Dave Schwartz
Tel: (713) 369-6100
Fax: (713) 369-6110
Email: infofri@fugro.com
www.fugro-lct.com

- Complete, New Data Coverage
- Find out about our 1- mile by 1- mile line spacing for the entire deepwater
- PSDM Support
- 3D Modeling



**100 Northpark Blvd.
Covington, LA 70433**

(985) 773-6000

"Serving the Oil & Gas Industry Since 1983"

Geological,
Geophysical &
Land Drafting

Anthony Catalanotto

President

Stefani Kelone

Drafting and Design



Geo-Draft, Inc.

A Professional Drafting & Graphics Firm

3349 Ridgelake Drive □ Suite 202 □ Metairie, LA □ 70002

Office: (504) 836-2882 Fax: (504) 836-2877

geodraft@bellsouth.net



LaBay
Exploration Co., L.L.C.

111 Veterans Memorial Blvd.,
Suite 1550
Metairie, Louisiana 70005

www.labayexploration.com

Office (504) 371-5967
Fax (504) 371-5969

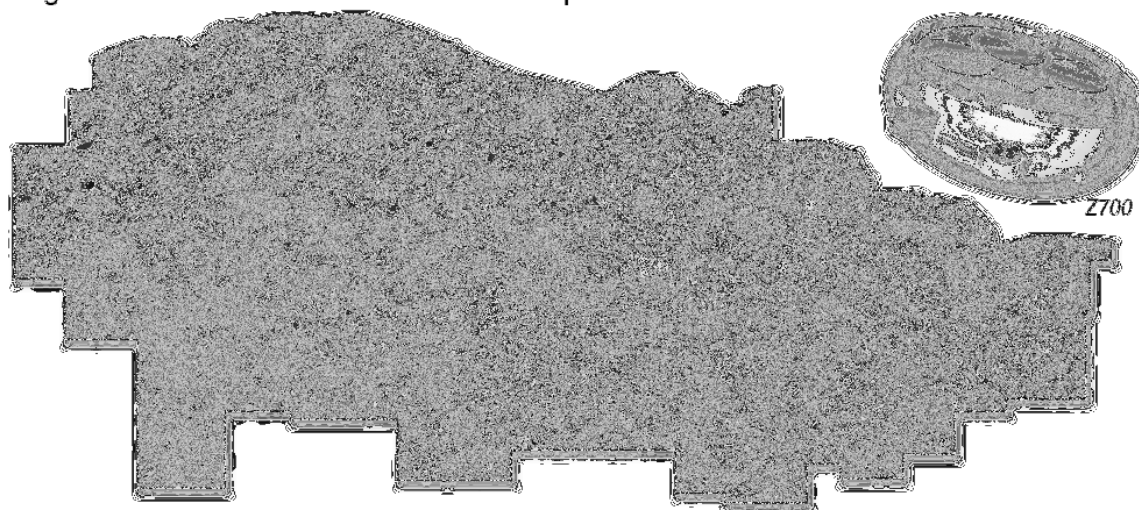
***This advertising space is
available! Contact the
NOGS office.***



At Fairfield the future is now.

Our updated seismic vessels equipped with Fairfield's Z700 ocean bottom node systems will be fully operational in the Gulf of Mexico during 2009. By utilizing longer offsets and the continuous recording capability of Z700, Fairfield will be able to image data to unprecedented depths of over 75,000 feet.

By the end of 2009 our entire database will have been processed using Curved Ray Migration and an additional 500 blocks of depth data will have been added.



The Future begins today. Don't be left in the past.

SEISMIC
SYSTEMS

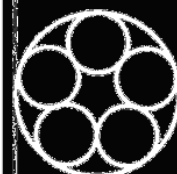
DATA
ACQUISITION

DATA
PROCESSING

DATA
LICENSING

281 273 7500

fairfield.com



Fairfield
INDUSTRIES



2009 NOGS and SGS Summer Social



-VS-



April 17'th New Orleans Zephyrs vs. the Nashville Sounds

Game starts at 7:00pm

**Please pick up your tickets from the Will-Call window before the game
Opening night at the Zephyrs stadium
+ Friday night Fireworks**

We will have a block of seats down the first base line.

Come out and bring the family

***Cost:**

\$ 5 – Member of either society and close relatives

\$ 25 – Non member Adults

(You get membership in your choice of societies, SGS or NOGS)

*** Parking is usually an additional \$3 per car**

Food: Your \$ 5.00 entry fee will get you into the game + \$5 in ballpark bucks to get something to eat during the game.

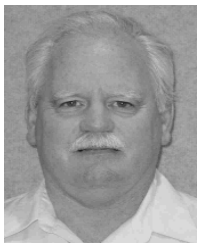
Please RSVP by April 10'th through Annette at the NOGS office (annette@nogs.org) or phone 504-561-8980. Please let us know how many will be in your party.

Thanks and we will see you at the game!

NOGS 2009-2010 CANDIDATES

For PRESIDENT ELECT

REITER



David E. Reiter graduated from the University of New Mexico in 1980 with an M.S. in Geology. He began his career with Shell Oil Co. in New Orleans as onshore exploration geologist. In 1984, he joined ODECO Oil & Gas (now Murphy E&P Co.) as an exploration geologist working the central GOM shelf area. He later moved into development geology with responsibility for several GOM shelf and deepwater fields. In 2005, Mr. Reiter joined Dominion Exploration and Production Company as Senior Staff Geologist in their GOM Shelf Exploration Group. After a brief stint with Energy Partners, Ltd, as Deepwater Exploration Geoscientist, he joined Eni Petroleum and is currently Senior Geologist in GOM Shelf Development.

David has been an active member of NOGS for the past 24 years. He has served as Secretary of NOGS, trustee of the NOGS Memorial Foundation Board, member of the NOGS Nominating Committee, and is currently serving as NOGS Best Paper Committee Chairman. Mr. Reiter has served as Co-Chairman of the 1996 SPWLA International Symposium, Poster Session Chairman of the 1997 GCAGS Convention, Golf Tournament Chairman for the 2000 AAPG Convention, and Judging Chairman for the ill-fated 2005 GCAGS convention in New Orleans. He was past V.P.-Public Relations and Treasurer of the SPWLA New Orleans Chapter and is currently serving as its President. Besides NOGS, David is also an active member of AAPG, SPWLA, and SEG.

For VICE PRESIDENT

HAFNER



Bob Hafner was born in New Jersey and received a B.S. degree in Geology from the University of Kansas in 1976. He earned his Master's degree from the University of New Orleans in 1980. Bob started his career with Getty Oil Company in the onshore department and worked for Texaco for 15 years after the Getty-Texaco merger. He spent two years with Mobil E & P until the Exxon takeover. Thereafter, he became a certified Earth Science teacher for Jefferson Parish and an adjunct professor at Delgado where he teaches physical and historical geology. After Katrina he did consulting work for Shell and Dominion before joining Eni Petroleum. His current position is Senior Geologist for the Shelf Exploration Group.

Bob has been a member of AAPG since 1978 and NOGS since 1981. He has been a long-term volunteer for Super Science Saturday at the Children's museum.

For TREASURER

HOLMAN



Chuck Holman received an M.S. from the University of Hawaii in 1982 and began his career with Mobil Oil in 1982. He transferred to the New Orleans Mobil office in 1983 and worked in various positions in the Gulf of Mexico Exploration Department. In 1992 he transferred to Dallas to work on the Mobil New Exploration Ventures Team and worked on various projects in Latin America. After Mobil, Chuck worked as consultant from 1996 to 2006 for SCA, Tecpetrol, Interactive Interpretation and Training, CGG, Avanti Consulting, Corelab, and Gaffney-Cline and Associates. Chuck then returned to New Orleans in 2006 to work as a geophysicist for Dominion Exploration & Production Company, now Eni Petroleum.

Chuck has been an active member of the local geophysical and geological societies where he has lived and is also an active member of the SEG and AAPG.

For EDITOR-ELECT

WISEMAN



Frances Wiseman is a New Orleans native and has worked for the Minerals Management Service/USGS for 33 years. She is currently a staff geologist with the Production & Development Program Office - Reservoir Analysis Unit, working on deepwater conservation issues in the Gulf of Mexico. Previously she worked on reserves estimates and production issues such as the downhole commingling of reservoirs. Fran is the chairperson of the GOM Recycling Committee and vice president of the Gulf Coast Recreation Association.

Fran graduated from Cabrini High School in New Orleans. She received a B.S. degree in geology from the University of New Orleans, and studied geology and petroleum engineering at LSU and Tulane. She has been a member of NOGS for 34 years and is also a member of AAPG and SPWLA. Currently, Fran serves as the NOGS Secretary.

NOGS 2009-2010 CANDIDATES

For SECRETARY

CONNOLLY/KEAR



Jennifer Connolly has been a Production Geologist with Shell since 2005, building 3D reservoir models and currently working on the Mars Venture Team. She is a native of Kentucky and received her

B.S. in Geology from the University of Kentucky. She moved to New Orleans in 2003 to pursue an M.S. in Geology from Tulane University. She has worked for Shell since graduating.

Jennifer is the current chairperson for the NOGS Advertising committee and a member of Shell's New Orleans Area United Way Campaign Committee. In addition, she is a wife and the proud mother of a beautiful one-year-old boy.



Rick Kear graduated from University of Florida with a BS in Mechanical Engineering in March 1972. In April 1972, he joined Schlumberger Offshore Services, Lake Charles, LA where he worked as a field engineer and special services specialist. In 1976 Rick came ashore as a Field Service Manager in Houma, LA. He has previously served Schlumberger

clients as District Manager of New Orleans East, Senior Sales Engineer and Area Sales Manager in Jackson, MS, City Sales Manager and Division Sales Manager in Shreveport, LA, Sales Development Engineer in Roswell, NM, and Division Sales Manager in Oklahoma City, OK. Rick came to work in Geology full time in New Orleans in 1996 as Gulf Coast Division Interpretation Development Geologist. He is currently the NGC (North Gulf Coast) Geology Domain Champion and Principal Geologist. His professional interests include SPWLA (Past President-New Orleans Chapter and currently VP of Symposia), petrophysics, geological and imaging interpretation (especially in resistive fluids), depositional environment interpretation, field studies, and leading field trips and workshops. Rick splits his time between New Orleans and Houston serving GoM clients. His personal interests are his family, the Lord, and his church. He is an AAPG Ass. Member, and Member of SPWLA, SPE and GCSPE and SEG.

For DIRECTOR 2009-2012 JOHNSON/REILLY



Art Johnson is a petroleum geologist with 32 years of diverse industry experience in exploration and development, and is a Past-President of NOGS. He is President and Chief of Exploration for Hydrate Energy International and is

engaged in exploration efforts throughout the world. Prior to forming HEI in 2002, Art was with Chevron for 25 years where his positions included New Trends Team leader. Art chaired the federal Methane Hydrate Advisory Committee from 2001 to 2006 and has advised the U.S. Congress and the White House on energy issues since 1997. He has an on-going role coordinating the research efforts of industry, universities, and government agencies. Among his many recent publications are two books, "Economic Geology of Natural Gas Hydrates", and "Alternative Energy and Fuels Technology". Art has recently been appointed as the Lead Analyst on Gas Hydrate for the "Global Energy Assessment", an international project supported by the World Bank, UN organizations, governments and NGOs.



Brenda Reilly joined Energy Partners, Ltd. in 2006. Her current responsibilities are exploitation and field management for EPL's fields in the South Timbalier area. Prior to EPL she worked for Murphy Oil Corp. (formerly Odeco) for 21 years. At Murphy she worked as a Development Geologist for their working interest properties in the offshore Gulf of Mexico until 1998 when she

was transferred to the Exploration Department. She received a Bachelor of Science degree in Geology from the University of New Orleans in 1982.

For NOGS Brenda is currently on the Best Paper Award Committee and an Alternate Delegate for AAPG. In 2007 she was awarded the NOGS Honorary Life Membership in recognition for her many outstanding contributions to the society. For NOGS she served as Chairman of the Memorial Foundation 2005-2006, Chairman of Office Operations 2005-2006, President 2004-2005, AAPG Delegate 2002-2004, Vice-President 2001-2002 and Treasurer 1996-1997. Brenda was Entertainment Chairman for the 2000 AAPG Convention held in New Orleans. She was a member of the NOGS Entertainment Committee 1994-1996, including Chairmanship from 1994-1995. She was honored with a President's Award in 1995 for her work for the society. In addition, she was Chairman of the 1996 SPWLA 37th Annual International Symposium held in New Orleans.

Outside of the oil industry, she on the Board of Directors of the New Orleans Opera Association (NOOA) where she serves on the

--- continued on page 30 ---

The Petroleum History Institute 2009 Symposium

150th ANNIVERSARY YEAR OF THE DRAKE WELL



(Drake Well Museum DW676)

“RETURN TO THE VALLEY THAT CHANGED THE WORLD”

May 14 - 16, 2009

Titusville, PA; Headquartered at
The Caboose Motel on Perry Street in downtown Titusville

Symposium Chair: Marilyn Black, at Oil Region Alliance of Business,
Industry & Tourism; (814) 677-3152, Ext. 105; mblack@oilregion.org
Coordinator of Presentations: Dr. William Brice, wbrice@pitt.edu;
(814) 269-3950

NOGS PRESENTS THE 2009 ANNUAL GOLF OUTING

PROCEEDS FROM THIS EVENT WILL HELP FUND *THE BILL CRAIG MEMORIAL FUND**.
LAST YEAR, THE GOLF TOURNAMENT GENERATED OVER \$3,500.00. LET'S KEEP IT GOING!

WE'RE BACK BY POPULAR DEMAND AT

MONEY HILL GOLF & COUNTRY CLUB

IN ABITA SPRINGS ON **MONDAY, APRIL 27.**

THE FORMAT WILL BE A 4-PERSON SCRAMBLE W/SHOTGUN START AT **12:00 NOON.**

FOOD SPONSORED BY TIM KLIBERT W/ DIVERSIFIED LOGGING

DRINKS SPONSORED BY CHAD LEBLANC W/ HALLIBURTON

REGISTRATION OPENS AT 10:00 AM WITH BRUNCH SERVED UNTIL TEE TIME. PRICE INCLUDES GREEN FEES, CART, RANGE BALLS, FOOD & DRINKS, FLIGHT, PRIZES & 2 MULLIGANS. WHAT ELSE COULD YOU POSSIBLY ASK FOR? DONATIONS OF ANY KIND ARE WELCOME. THE COST IS \$140.00 / INDIVIDUAL OR \$650/CORPORATE. HOLE SPONSORS ARE \$125.

THIS EVENT ALWAYS FILLS UP AND WE ARE LIMITED TO 120 PLAYERS ONLY. PLEASE REGISTER EARLY TO AVOID CONFUSION. REMEMBER YOU ARE NOT REGISTERED UNTIL NOGS HAS RECEIVED PAYMENT AND YOU ARE CONFIRMED BY ANNETTE. AS USUAL WE NEED VOLUNTEERS. IF YOU CAN HELP OUT YOU WILL BE TREATED TO A DAY OF FUN, FOOD, AND BE ELIGIBLE FOR SOME DOOR PRIZES. MAKE SURE YOU SUPPLY YOUR HANDICAP OR A SCORE THAT TYPIFIES A SET OF ROUNDS OF GOLF OVER RECENT TIME NO GREATER THAN 2 YEARS IN THE SPACE PROVIDED.

DONATIONS AND TO VOLUNTEER CONTACT JEFF JANDEGIAN (504-522-7496)
AL PORTER (504-488-3711) BILL WHITING (504-947-8495)

TO REGISTER, CONTACT ANNETTE HUDSON AT THE NOGS OFFICE, 810 UNION ST. STE. 300
NEW ORLEANS, LA 70112 504-561-8980; FAX 504-561-8988. CASH, CHECK (PAYABLE TO NOGS), VISA, MC, AND AMEX ARE ACCEPTED.

Name: _____

Company: _____

Phone: _____

Names of others in your group;

V MC Disc Am Ex # _____

Exp Date _____ Total Paid _____

_____ @ \$140 each = _____

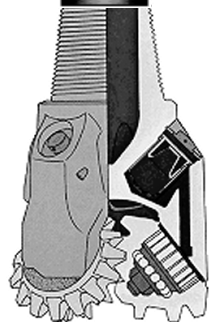
_____ @ \$650 each = _____

Cash Donations = _____

Hole Sponsorship = _____

TOTAL = _____

* Information
concerning *The Bill
Craig Memorial
Fund* is available at
www.nogs.org.



South Louisiana and Offshore Exploration and Production Activity

- Mariner on 2-February announced three GoM discoveries.

Heidelberg #1, a subsalt "Expanded Miocene" prospect located in GC Block 859, was drilled to a TD of ~30,000 feet, logging more than 200 feet of net oil pay (more than 250 feet TVT) in multiple high-quality Miocene sands. Anadarko, the operator, stated that the well encountered reservoirs of the same age and characteristics as its Caesar/Tonga discoveries. As of the press release date, well data continued to be analyzed to determine next steps in delineating and developing what appears to be a significant discovery. Heidelberg comprises Green Canyon blocks 816, 859, 860 and 903. Partners are Anadarko (operator and 44.25% WI), Mariner (12.5% WI), ENI (12.5% WI), StatoilHydro (12% WI), Cobalt International Energy, L.P. (9.375% WI), and ExxonMobil (9.375% WI).

Bushwood #1 (formerly Geauxpher #3), located in GB Block 463 and described as a "conventional deepwater amplitude prospect", was drilled to a TD of ~25,300 feet, logging more than 260 feet TVT of net gas pay in multiple sands, with more than 150 feet TVT of net gas pay found in the deeper exploratory section. Mariner operates and holds a 30% WI. Partners are Energy Resource Technology GoM, Inc., a wholly owned subsidiary of Helix Energy Solutions Group, Inc. (35% WI), Apache Corporation (20% WI), Deep Gulf Energy II LLC (10% WI), and Deep Gulf Energy LP (5% WI).

Smoothie #2, reported to be a "deep shelf prospect" in ST 49, was drilled to a TD of >20,100 feet, logging more than 200 feet TVT of net gas pay in multiple zones. Mariner operates the well holding a 100% WI.

- Anadarko Petroleum Corporation (30% WI and operator) on 4-February announced a deepwater GoM discovery. "Shenandoah", located in WR Block 52, encountered net oil pay approaching 300 feet in the Paleogene "Wilcox" formation.

Bob Daniels, Anadarko Sr. Vice President, Worldwide Exploration stated, "Initial data indicates the Shenandoah discovery has reservoir properties that appear to be of much higher quality than industry has seen previously in the emerging Lower-Tertiary play."

Shenandoah is located in ~5,750 feet of water and was drilled to a TD of ~30,000 feet. Anadarko and its partners are evaluating the well results and the next steps toward future appraisal activity. Partners include ConocoPhillips (40% WI), Cobalt International Energy, L.P. (20% WI) and Marathon (10% WI).

Also in the deepwater GoM, Anadarko expects to spud "Vito", a Middle-Miocene prospect in MC Block 984 and the "Samurai" Middle- and Lower-Miocene exploration well in GC Block 432 during the first quarter. Anadarko will operate both wells with a 20% and a 33.33% WI, respectively.

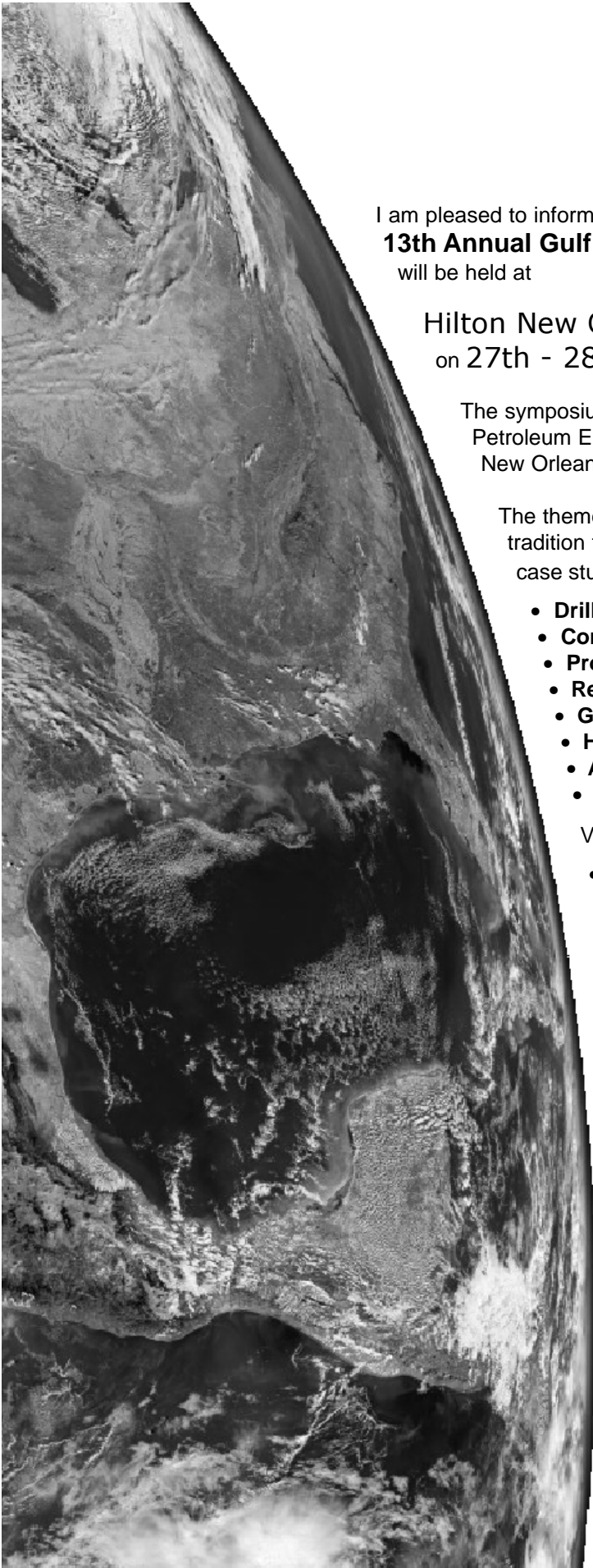
- Chevron Corporation on 5-February announced a new deepwater Paleogene oil discovery at Buckskin prospect in KC 872. The well was drilled in a water depth of 6,920 feet to a TD of 29,404 feet. Buckskin is 44 miles west of Chevron's 2004 Paleogene Jack discovery.

The Buckskin No. 1 encountered more than 300 feet of net pay. More tests are being conducted on data gathered from the discovery well, and additional work at the prospect will be needed to determine the extent and commercial viability of the discovery.

George Kirkland (Chevron executive vice president, Global Upstream and Gas) said, "This is a very significant discovery in the Lower Tertiary trend, where Chevron is the largest leaseholder. Continuing our success at the Jack well, Buckskin reinforces the trend's potential to provide the U.S. with important new energy supplies."

Partners in the discovery are Repsol (12.5% WI and operator), Chevron (55% WI, which will become operator and conduct all future work), Maersk Oil America (20% WI), and Samson Offshore Company (12.5% WI).

- Paul Post



I am pleased to inform that the
13th Annual Gulf of Mexico Deepwater Technical Symposium
will be held at

Hilton New Orleans Riverside, New Orleans
on 27th - 28th of August, 2009

The symposium is a joint effort between Delta Section of Society of Petroleum Engineers, American Association of Drilling Engineers and New Orleans Geological Society.

The theme for the symposium is "Opening THE LIMITS" with the tradition for the symposium continuing to focus on Gulf of Mexico case studies and key technologies in the following sessions


- **Drilling**
- **Completions**
- **Production Systems**
- **Reservoir & Economics**
- **Geoscience**
- **HS&E / Regulatory**
- **Alternate Energy**
- **Emerging Technologies**


Visit www.deepwaternola.org to


- **Register for the symposium - enjoy the discount for signing up early**
- **Submit abstract for papers by March 31, 2009 - Manuscript not required**
- **Sign up for Exhibits**
- **Become a Sponsor**

Rakesh Kumar
Symposium Chairperson

A Company that Shines

 Geophysical Products

 Geological Products

 Imaging Services



TGS has been providing best-in-class multi-client data and services to successful E&P companies for over a quarter century. Our geophysical and geological data products are distributed around the globe and include one of the youngest and best targeted multi-client seismic libraries, extensive magnetic and gravity data, the industry's largest global database of digital well logs, and regional interpretive products. We also provide high-end depth imaging services to help resolve complex seismic imaging problems. Together, our products and services give you a more complete picture of the subsurface to help your exploration program *shine*.

For more information, visit www.tgsnopec.com today.



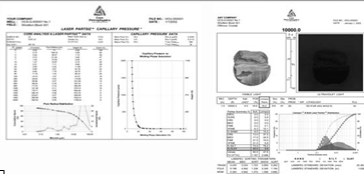
www.tgsnopec.com

NORWAY +47 66 76 99 00 | USA +1 713 860 2100 | UK +44 (0) 1234 272122 | AUSTRALIA +61 8 9480 0000 | RUSSIA +7 495 959 8117
©TGS-NOPEC Geophysical Company. All Rights Reserved.



Sidewall Core Specialists

Experts in Small Sample, Laminated and Shaly Sand Analysis



Laboratory Services:

- Core / Log Integration
- Laser Enhanced Permeability
- Porosity
- Fluid Saturations
- Measured Descriptions
- Critical Water
- Capillary Pressure Simulation
- UV Photography /Digital Images
- Lamination Characterization
- NMR Measurements
- Petrology

Core Lab has made many improvements to sidewall core testing which have had a positive synergistic effect on overall data quality.

Laser particle size analysis, Lamination specific analysis, UV-Visible Spectroscopy, lamination classification, Photospec summary reports, digital data bases via our website and capillary pressure simulation are all innovations introduced by Core Lab to help our clients obtain maximum benefit from their samples and analyses.



Core Laboratories 504-733-6583

**NOGS thanks our
sponsors for their support:**

GOLD LEVEL SPONSORS:

**LA BAY EXPLORATION CO., LLC
LLOG EXPLORATION CO., LLC**

SILVER LEVEL SPONSORS:

**CHEVRON
CLAYMORE OIL AND GAS, L.P.
CIMAREX**

**SPECIAL THANKS TO
DIVERSIFIED WELL LOGGING**

SURVIVOR™

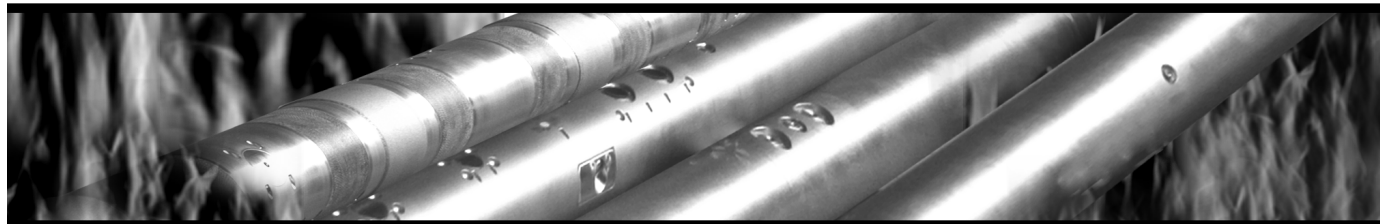
LOGGING-WHILE-DRILLING SUITE

The SURVIVOR™ Suite uses our highly reliable HDS-1 Directional Gamma Ray technology, Array Wave Resistivity tool, Slim Density Neutron Standoff Caliper tool and our Dynamic Pressure Module to create a complete system for logging in hostile drilling environments.

Temperature Rating.....350°F (175°C)

Pressure Rating25,000 psi

Logging Capacity300+ circulating hours



RELIABILITY. ACCURACY. VERSATILITY. WE DELIVER.

e-mail: pfmarketing@pathfinderlwd.com

www.pathfinderlwd.com

© 2006 Pathfinder Energy Services, Inc. All rights reserved.

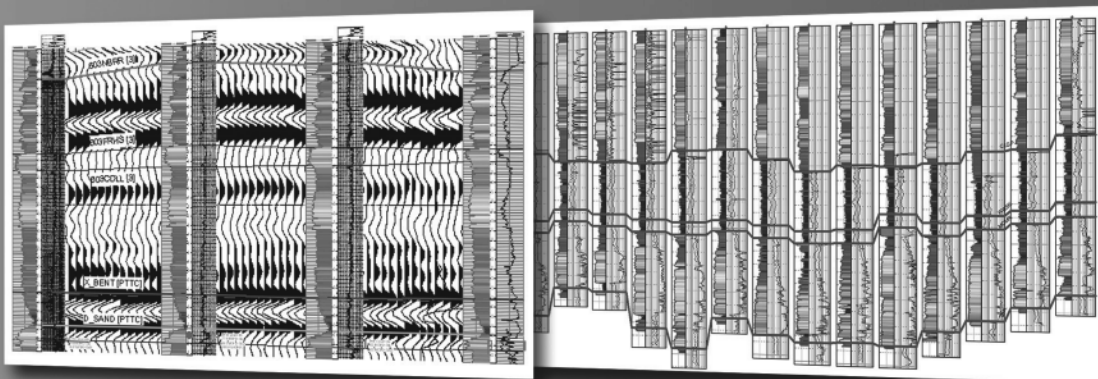
PATHFINDER®

Define your geological model faster than ever before

NO MORE WAITING! Available today from IHS, easy and affordable access to one of the largest U.S. digital log collections

- More than 185,000 LAS files with over 1.5 million curves
- Regional subscription packages for today's active play areas
- Indexed to IHS well and production data
- Linked to the IHS Enerdeg® Browser for quick regional studies and log selection
- Available via IHSLogNet.com or on DVD
- Ready to use in PETRA and other log packages

Request a free 2' x 3' IHS digital log coverage map at ihs.com/energy/DigitalLogs



Use PETRA® to integrate digital log, well, production, perf, seismic and tops data. IHS is the only company to provide you with the complete picture

Why wait? Subscribe today! Call 888.OIL.DATA (645.3282) or e-mail sales.energy@ihs.com



The Source
for Critical Information and Insight™

THE NEW ORLEANS GEOLOGICAL SOCIETY MEMORIAL FOUNDATION, INC.

The Memorial Foundation is an IRS Tax Exempt Code #501 (c)(3) organization. The Federal I.D. is: 72-1220999. Please consider making your donation prior to the close of this year's fiscal cycle which is September 30, 2009. Your individual support in any amount will help meet the IRS Guidelines for our Foundation. *Thanks!*

\$15,000 AND ABOVE

Olga Braunstein Succession

Gibbett Hill Foundation

*In Memory of Steve & Marion Millendorf, William J. Prutzman,
Roger G. Vincent & Ron Youngblood*

\$10,000

George W. Schneider, Jr. and Family

In Memory of George W. Schneider, Sr.

\$7,000 TO \$9,000

Paul C. Mc Williams

\$3,000 TO \$4,000

NOGS Golf Tournament May 2008

In Memory of Bill Craig

\$1,000

C & R Exploration, Inc.

In Memory of Richard W. Boebel

John M/ Henton, Jr.

In Memory of Dr. Gordon Frey

\$500

Carlo and Beverly Christina

In Memory of Richard W. Boebel

\$250 TO \$499

Carlo C. Christina

In Memory of Robey H. Clark

In Memory of Al Gibeath

In Memory of Allen R. Stern

Carol and Gilbert St. Germain

In Memory of Richard W. Boebel

Kathy King Family

In Memory of George W. Schneider, Sr.

Bill Schneider Family

In Memory of George W. Schneider, Sr.

Susan King Family

In Memory of George W. Schneider, Sr.

UP TO \$249

Don and Carol Andrews

In Memory of Thomas H. Philpott

In Memory of William B. Rodan

Robert J. Ardell

Memory of Richard W. Boebel

In Memory of Dr. Gordon Frey

Jack R. Bantari

Mr. and Mrs. Wesley Barton

In Memory of Thomas A. Cullinan

Abraham Biadgelgne

Hilary James Brook

Robin A. Broussard

In Memory of Charles L. Jones

In Memory of Thomas H. Philpott

Jack G. Bryant

Rob Burnett

Trudy and Charley Corona

In Memory of Thomas A. Cullinan

Chevron

Matching Funds

Arthur F. Christensen

Ellen F. Clark

James S. Classen

In Memory of Thomas A. Cullinan

In Memory of All Gibeath

In Memory of George W. Schneider, Sr.

Charley Corona

In Memory of Charles L. Jones

In Memory of McLain Forman

In Memory of Richard W. Boebel

Trudy and Charley Corona

In memory of Thomas A. Cullinan

Michael A. Danahy

Merle J. Duplantis

George H. Evans

Exxon Mobil Matching Funds

Michael N. Fein

Mark J. Gallagher

David Garner

Peter G. Gray

In Memory of Thomas A. Cullinan

Angela M. Hessler

Bernard L. Hill, Jr.

In Memory of Robert E. Osborne

Owen R. Hopkins

Dan E. Hudson

Thomas A. Hudson

Kenneth Huffman

Arthur H. Johnson

In Memory of George W. Schneider, Sr.

Thomas E. Johnson

FONO FUND

The FONO Fund accepts contributions that are invested and the income dedicated to assure sufficient financial resources will always be available to maintain the NOGS business office. Contributors are reminded that donations to the FONO Fund are not covered by the IRS 501 (c)(3) tax exempt classification and should be reported as a business expense on your IRS tax report.

\$600

Richard W. Boebel

Willis E. Conatser

\$500

James A. Hartman

In Memory of Richard W. Boebel

UP TO \$249

Woods W. Allen, Jr.

Donald I. Andrews

Alfred H. Baker Jr.

Philip Beron, Jr.

Joseph E. Boudreaux

Hillary James Brook

J. Sybil Calloway

Clarence F. Conrad

John Dombrowski

Merle J. Duplantis

Richard A. Edmund

Niles R. Faulk

Michael N. Fein

Laurens Gaarenstroom

Mark J. Gallagher

Arthur J. Garden

Duncan Goldthwaite

Peter G. Gray

James A. Hartman

In Memory of Brian J. O'Neill

Bernard L. Hill, Jr.

Owen R. Hopkins

Thomas A. Hudson

Kenneth Huffman

Paul Jurik

Tom Klekamp

William J. Malin

Jeannie F. Mallick

George M. Markey, Jr.

Robert H. Monahan

Robert G. Murphy

William J. O'Leary

Richard A. Olsen

Linda and Bill Peirce

Jaser N. Rafidi

James P. Raymond, Jr.

C. R. Rondeau

Rudolf B. Siegert

Raymond Stephens

Scott A. Wainwright

Roy C. Walther

Robert C. Weissmann

Louis E. Willhoit, Jr.

Jim Zotkiewicz

CONTRIBUTIONS FOR BOTH FUNDS
THROUGH MARCH 5, 2009.
DONATIONS ARE LISTED FOR ONE YEAR.

Tom Klekamp

In Memory of Robert W. Sabate'

John C. Kuciewicz, Jr.

William J. Malin

Jeannie F. Mallick

David C. Mount

Robert G. Murphy

New Orleans Geological Auxiliary

In Memory of Virginia Schell

Russell H. Nordwell

Richard A. Olsen

In Memory of Richard W. Boebel

In Memory of Robert W. Sabate'

Teresa M. O'Neill

In Memory of Brian J. O'Neill

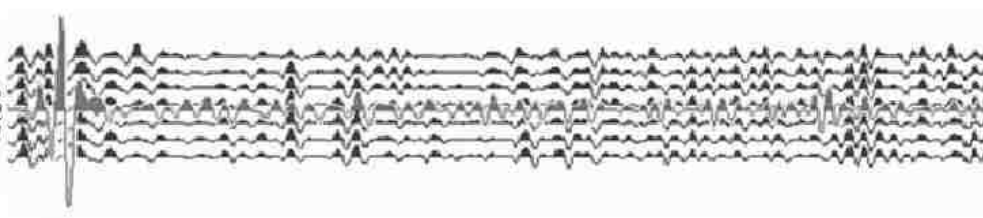
Linda and Bill Peirce

Edward B. Picou Jr.

In Memory of Dr. M. Gordon Frey

In Memory of Brian J. O'Neill

--- continued on page 31 ---



The Southeastern Geophysical Society
presents
**Exploration Offshore USA OCS:
Opening the Next Frontier?**

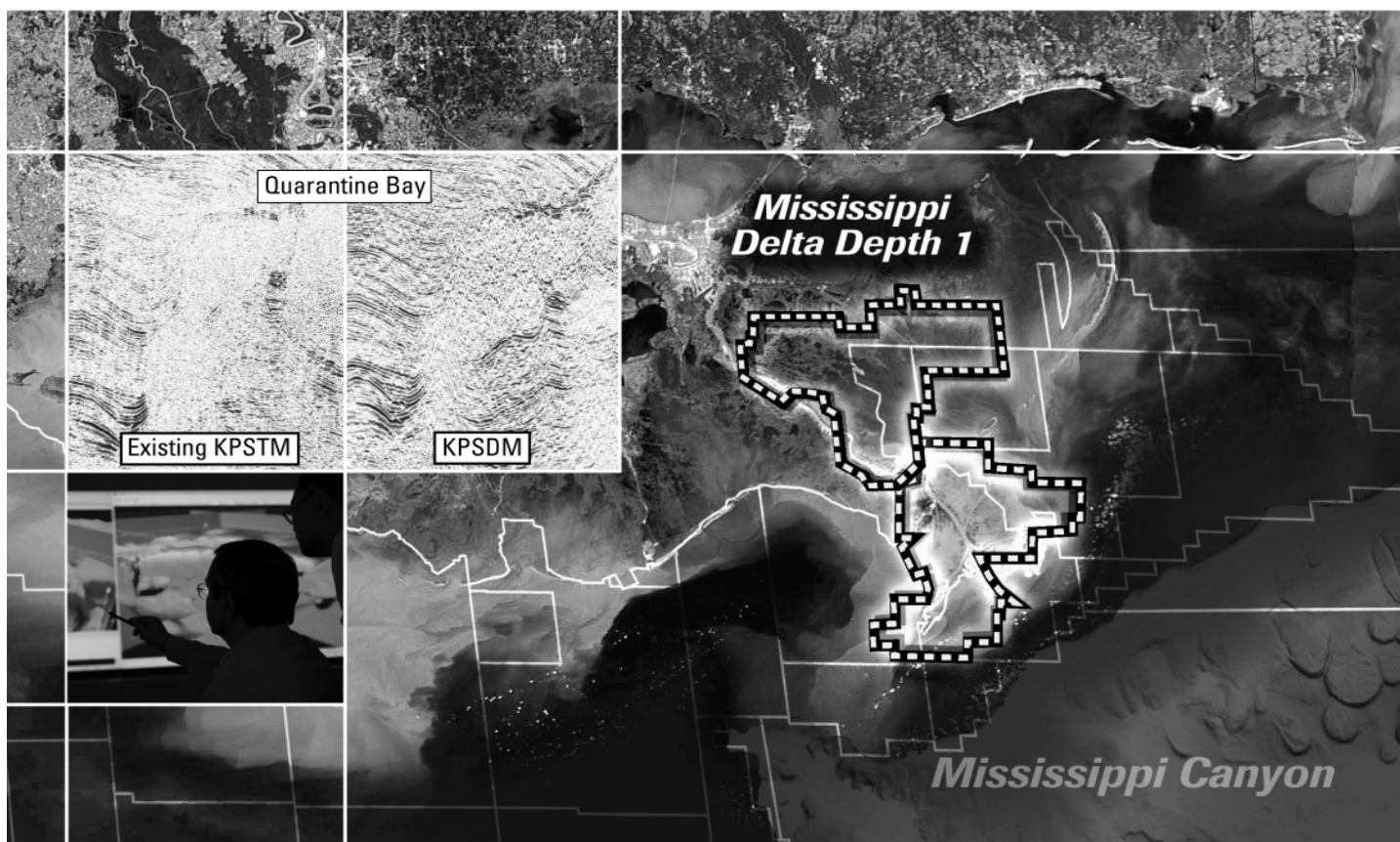
**SGS Technical Symposium
November 12, 2009
New Orleans, Louisiana**



- Offshore Virginia has been opened.
- When will the potential lifting of other OCS areas result in drilling?
- What is the potential for hydrocarbon accumulations?
- What will the new President and Congress do?

Call for presenters/sponsors – if you or your company would like to present a lecture or sponsor the symposium – contact Wayne Cook at wcook@seitel.com or Eric Zimmermann at ericz@lbg.com

Expand your opportunities ...



Announcing Mississippi Delta -*Depth 1*, current depth image reprocessing now in progress.

Experience the industry-leading benefits of WesternGeco state-of-the-art processing, designed to eliminate fault shadows and enhance deep imaging.

Delivering anisotropic Kirchhoff volumes:

- Processing and remigration of twelve legacy surveys covering 1,855 square miles.
- High-quality time imaging using relative amplitude anisotropic prestack time migration followed by improved structural imaging utilizing anisotropic prestack depth migration.

Excellence in technology – Experienced professionals.

To learn more about our Multiclient products, call +1 713 689 1000.

Multiclient to the Power of E

Multiclient^E

www.slb.com/westerngeco



© 2008 Schlumberger



Shoreline Gas Inc.
www.shorelinegas.com
 Full Service Natural Gas Marketing



Sydboten & Associates, Inc.
 Geological and Geophysical Consulting,
 3-D Seismic Interpretation

Ben D. Sydboten, Jr. CPG

124 Heymann Blvd., Suite 202
 Lafayette, LA 70503

Office (337) 234-5288
 Cell (337) 234-5491

ATWATER CONSULTANTS, LTD.

REGISTERED AND CERTIFIED PETROLEUM PROFESSIONALS

GEOLOGICAL, ENGINEERING, GEOPHYSICAL,
 TRAINING AND EXPERT WITNESS SERVICES

3525 Hessmer Ave, Ste 304
 Metairie LA 70002

Tel. (504) 581-6527
 Fax (504) 524-7798

Please support NOGS advertisers!



626 E. Kaliste Saloom
 Lafayette, LA 70508

16900 Greenspoint Dr, Suite 225-S,
 Houston, TX 77060

www.stoneenergy.com



CIMAREX ENERGY CO.

GULF OF MEXICO REGION
 GOM, SE La., N. La., MS, AL

1100 Poydras St.; Suite 1100

New Orleans, Louisiana 70163

504-586-1815 / Fax 504-586-9035

Keith Gourgues
 Region Manager

NORTHCOAST OIL COMPANY

610 E. Rutland St.
 Covington, LA 70433
 (985) 898-3577
 (985) 898-3585 FAX

Jack M. Thorson
Eric C. Broadbridge
J. Daryl Gambrell
Raymond W. Stephens

(832) 242-6000 (O)
 (713) 917-0493 (O)

(504) 931-7506 (C)
johnjurasin@jurasinoilgas.com

JURASIN OIL & GAS

9700 Richmond Ave., Suite # 124
 Houston, TX 77042-4821

JOHN M. JURASIN
 President

Cert. Pet. Geologist #4284
 Cert. Prof. Earth Scientist #1961

Collarini Energy Staffing

Full-Time and Temporary Personnel

Facilities • Drilling • Production • Reservoir Engineering
 Land and Legal • Geoscience • Information Technology •
 Health and Safety • Management • Supply Chain
 Accounting • Administrative Support

11111 Richmond Ave., Suite 126
 Houston, Texas 77082

832-251-0553



www.collarini.com

Collarini Associates

Reservoir Engineering
 Oil & Gas Property Evaluation
 3-D Seismic Interpretation
 Integrated Field Studies

832-251-0160
 504-887-7127

Houston
 New Orleans

NEW AVO MODEL TURNS HEADS!

[She Must Have Used **KINGDOM[®] 8.3!**]



Be the envy of your neighbors with **KINGDOM 8.3.**

New KINGDOM 1D Forward Modeling allows geoscientists to conduct advanced “What-If” analysis on pre- and post-stack data. And while the interface is intuitive enough for beginners, it is powerful enough for experts.

You can instantly change geologic properties such as P- and S-velocity, density, thickness, porosity, and Poisson’s Ratio. Interactively substitute fluids using the Biot-Gassmann method. Control the precise makeup of pore fluids by adjusting fluid properties such as salinity, gas gravity, GOR, and API gravity.

Best of all, it’s integrated in one executable, ensuring you never have to switch in and out of multiple applications to finish your workflow.

With KINGDOM 8.3, now every geoscientist can pursue a career in modeling!

See the full fall lineup from SMT, the global market leader for PC-based interpretation. View our webinar on What’s New In KINGDOM 8.3 at www.seismicmicro.com/smt-model7


Call your sales representative TODAY about “Introductory Pricing” on this new module.

Intuitive. Integrated. Interpretation.

USA +1 (713) 464-6188 **Canada** +1 (403) 303-3365 **Colombia** +57 (1) 618-0239

Russia +7 495 980 89 82 **Singapore** +65 6220 1089 **UK** +44 (0) 20 8240 6524



ANSYTHE Donald I. Andrews 504-887-3432 	D-O-R ENGINEERING, INC. 3-D and Geoscience Services 120 Oil Center Dr., Bldg. 12 P.O. Box 51707, Lafayette, LA 70505 Bus. (337) 233-2378 Fax (337) 233-2907
THE BOEBEL COMPANY Oil and Gas Investments 170 Broadway Street, Suite 321 New Orleans, LA 70118 (504) 866-4313	EDWARD B. PICOU, JR. Consulting Micropaleontologist - Retired 228 St. Charles Ave., Suite 1330 C New Orleans, LA 70130 Bus. (504) 529-5155 Res. (504) 282-3096
BOO-KER OIL & GAS CORP. Gray S. Parker 826 Union, Suite 300 New Orleans, LA 70112 Bus. (504) 581-2430 Fax (504) 566-4785	H. WARREN BELL Oil and Gas Exploration 2500 Tanglewilde, Suite 485 Houston, TX 77063-2126 Bus (713) 266-7297 Fax (713) 266-7298
C & R EXPLORATION, INC. Carlo C. Christina Lawrence G. Ringham	PHELPS GEOSCIENCE Onshore Gulf of Mexico Geology and Geophysics Prospect Generation and Evaluation Houston, TX jsfphelps@yahoo.com (281) 398-5208
C. R. RONDEAU Petroleum Geologist 119 W Southland Ave. Ironwood, MI 49938 Res. (906) 932-4692	RAFIDI OIL AND GAS, INC. Jaser N. Rafidi, President 4415 Shore Dr., Suite 202 Metairie, LA 70006 Bus. (504) 722-2942 Fax (504) 888-5539; Res. (504) 888-1661
CLASSEN EXPLORATION, INC. James S. Classen Looking for close in deals P.O. Box 140637 Boise, ID 83714 classenllc@msn.com Bus. (208) 854-1037 Fax (208) 854-1029	ROY C. WALTHER Petroleum Geologist 2421 Prancer Street New Orleans, LA 70131 Bus. (504) 392-8513 Res. (504) 392-9332
COLLES C. STOWELL Oil and Gas Consultant 22 Sea St. Manchester, MA 01944 (978) 526-1286	TONY CAROLLO Consulting Geologist Unitization Geosteering Field Studies 1701 Peach Street Metairie, LA 70001 Bus. (504) 885-0004 Res. (504) 885-6829

Memorial Fund, continued from page 25

Jaser N. Rafidi
Edmund L. Russell
Robert C. Shoup
Rudolph B. Siegert
In Memory of Richard W. Boebel
Dr. J. O. Snowden
Raymond O. Steinhoff
In Memory of Robert S. Wood
In Memory of Harold E. Vokes
Stephen Szydluk

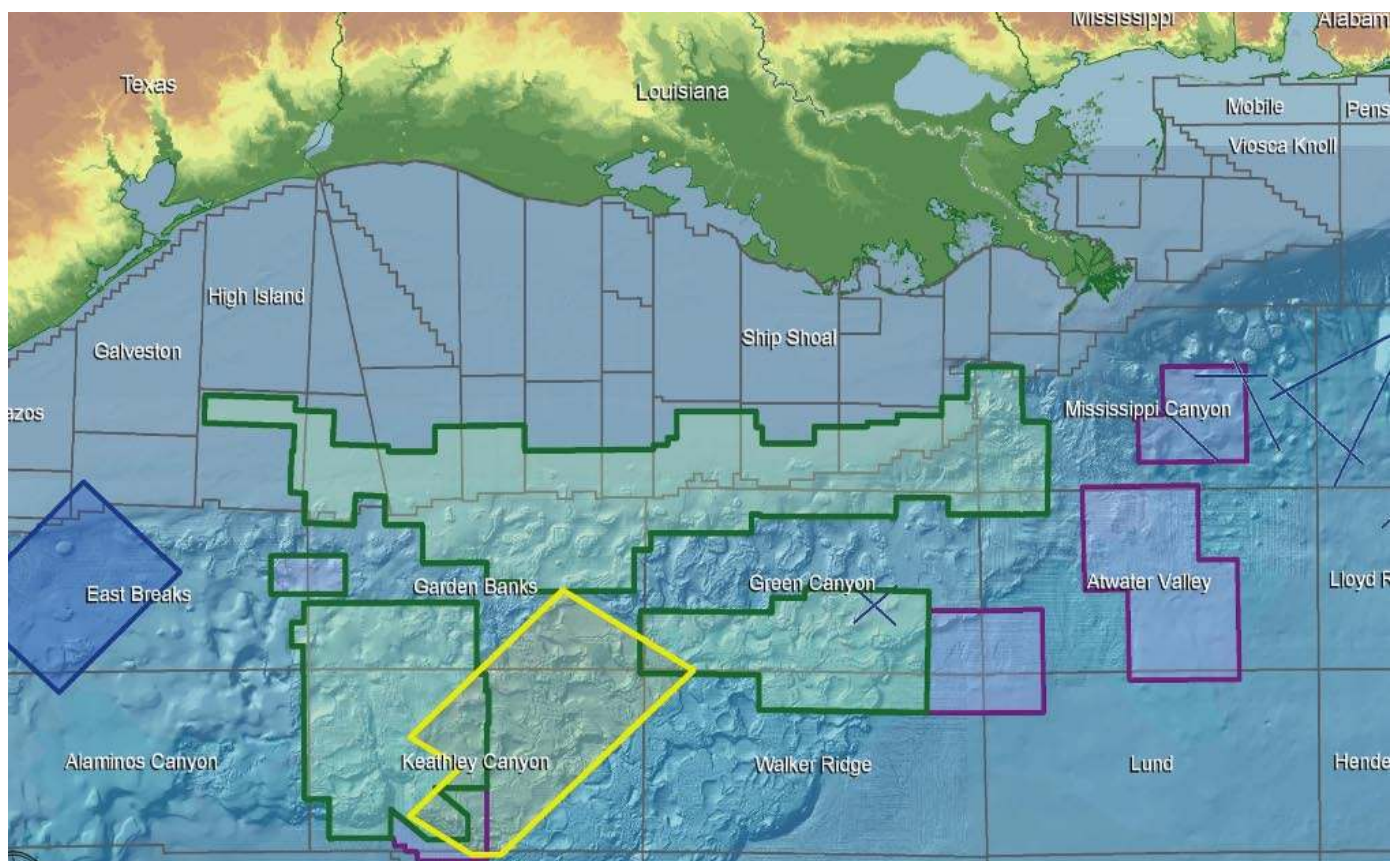
Patrick F. Taylor Foundation
Employee Matching Gifts Program
Scott A. Wainwright
Roy C. Walther
William M. Whiting
Louis E. Willhoit, Jr.
Armour C. Winslow
In Memory of Rita Menzel Winslow
Frances A. Wiseman
In Memory of Steve Widdicombe
Jim Zotkiewicz

In Memory of Bill Craig
Robin A. Broussard
Chevron
M. R. "Bob" Douglass
Bernard L. Hill, Jr.
Jeff Jandegian
John C. Scheldt
Candace V. Strahan
In Memory of James Strahan

NOGS 2009-2010 Candidates: Brenda Reilly's Bio, continued from page 17

Finance and By-Laws committees. She is also on the Board of Governors for the Women's Guild of the NOAA where she is currently co-chairing a fundraising luncheon and on an Opera Ball committee. In addition, she is on the Advisory Council of the LA/SPCA and an active member of the Visiting Pet Program.

She is a member of NOGS, AAPG, SGS and SPWLA. Brenda is an AAPG Certified Petroleum Geologist and Texas Board Certified Petroleum Geologist.



PGS Gulf Of Mexico Data Library

Challenging Times Require Imaginative Solutions - PGS Your Creative Business Partner

- Newly Reprocessed PSDM - Kirchhoff, Beam & WEM
- Wide-azimuth - Kirchhoff, Beam & WEM
- Narrow azimuth
- Proposed Wide-azimuth - Beam & RTM

Contact your local PGS representative for more information

Houston
+1 281 509 8000
+1 281 509 8500

Oslo
Tel: +47 67 52 6400
Fax: +47 67 52 6464

London
Tel: +44 1932 37 6000
Fax: +44 1932 37 6100

A Clearer Image
www.pgs.com



SEE YOUR DATA IN A WHOLE NEW LIGHT!

Take the pressure out of exploration and drilling by seeing what you are going to encounter.



eSeis

www.e-seis.com
713.531.1447

- Lithology & Fluids
- Depositional Facies
- Pore Pressure from V & Q
- Well Planning Consultation

MARINE PROPERTIES, LLC BERKSHIRE EXPLORATION CO.

MONTE C. SHALETT, CPL, PRESIDENT

3030 Lausat Street
Metairie, LA 70001-5924

BUS. (504) 831-7779
FAX. (504) 831-8315

WWW.NOGS.ORG

NEW ORLEANS GEOLOGICAL SOCIETY

810 Union Street, Suite 300
New Orleans, LA 70112-1430



PCI

Paleo Control, Inc.

Houston, Texas
713-849-0044

Drilling Wells, Studies and Data Base

Loyd Tuttle

Frio, SE Texas

Bob Liska

Wilcox, S and SE Texas

Jim Thorpe

Miocene and Cam-Miogyp

