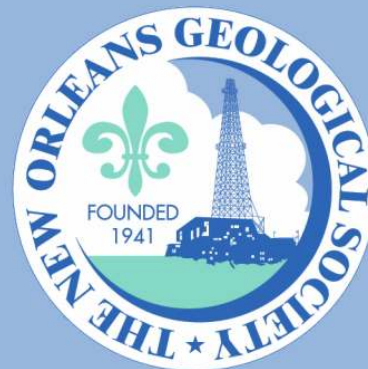


NOGS LOG



September 2008

Volume 49, Number 3

Upcoming Events and Activities

September 8 - NOGS Luncheon

*** At the Holiday Inn Downtown Superdome ***

Free validated parking in hotel garage

William R. Finley, Independent Geologist, will present

“Creole - Geology breaths new life into 1st Gulf of Mexico Oil Field.”

(See Page 7 for Abstract and Biography)

HOLIDAY INN DOWNTOWN SUPERDOME

ADMISSION:

Check with concierge or

front desk for location

Lunch served at 11:30am

with reservation \$30.00

without reservation \$35.00

Student Member with reservation Free

September 15-20 - Association of Environmental and Engineering Geologists Annual Convention

At the New Orleans Marriott. Go to www.aegweb.org for more information.

September 19 - NOGS Kickoff Party

7-10:00pm at New City Grill in Metairie. \$35 per person, cash bar.

See announcement on page 15.

September 20 - Lake Pontchartrain Basin Foundation's Beach Sweep

19th Annual Beach Sweep. Go to www.saveourlake.org to volunteer.

October 5-9 - GSA and GCAGS Joint Annual Meeting

In Houston. Go to www.geosociety.org for details.

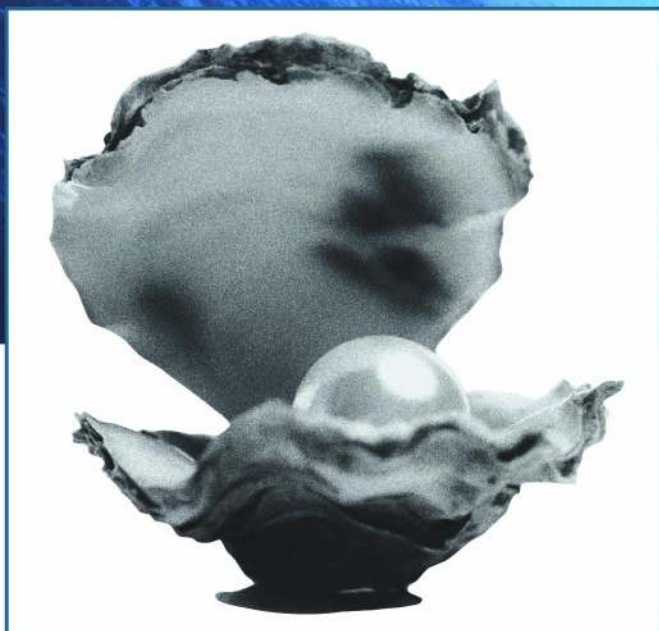
October 13 - NOGS Luncheon

Bernie Regel, Chevron, will present “4D Seismic in Field Development.”

October 18 - NOGS Fall Field Trip

“The Baton Rouge Fault.” See page 27 for announcement.

Introducing OYSTER



A new way to access U.S. well data from TGS' collection of over 5,000,000 logs

With **OYSTER**, LOG-LINE Plus! users pay a single annual fee for **unlimited downloads** of depth-calibrated smartRASTER® logs from TGS' unrivaled U.S. collection. Having all the data you need is now more affordable than you think.

For more information, please call **888-LOG-LINE** or contact your TGS account manager.



Geophysical
Products



Geological
Products



Imaging
Services

www.tgsnopec.com

NORWAY +47 66 76 99 00 | USA +1 713 860 2100 | UK +44 (0) 1234 272122 | AUSTRALIA +61 8 9480 0000 | RUSSIA +7 495 229 13 24

©2008 TGS-NOPEC Geophysical Company. All Rights Reserved.

NOGS Office

Office Manager: Annette Hudson
Office Hours: 8:30am – 3:30pm on Monday-Wednesday-Friday
Tel: 504-561-8980 □ Fax: 504-561-8988
E-mail: info@nogs.org □ Website: www.nogs.org
The office is located at Suite 300, 810 Union Street, New Orleans, LA 70112.
Correspondence and all luncheon reservations should be sent to the above address.
Sent to press on August 27, 2008.



BOARD OF DIRECTORS

		Company	Phone	E-mail
President	William M. Whiting	Consultant	504-947-8495	bootscon@aol.com
Vice President	Allan Melillo	Chevron	985-773-6756	ajme@chevron.com
Secretary	Frances Wiseman	MMS	504-736-2912	frances.wiseman@mms.gov
Treasurer	James Swaney	MMS	504-736-2677	james.swaney@mms.gov
President-Elect	Tom Klekamp	Amber Resources LLC	985-845-4046	klekamp@bellsouth.net
Editor	Michael D. Miner	UNO	504-280-3866	mminer@uno.edu
Director 2009	Willis E. Conatser		504-469-2496	weconatser@aol.com
Director 2010	Michael M. Ledet		504-394-9636	mikeledet@cox.net
Director 2011	Scott A. Wainwright	Bret Exploration Co Inc	504-889-2700	scott_wainwright@hotmail.com

COMMITTEE

	Chairperson			
AAPG Delegates	Dave Balcer	Chevron	985-773-6725	dbalcer@Chevron.com
AAPG Student Chapter	Bobby Cosentino	Tulane University	504-865-5198	rcosentino@tulane.edu
AAPG Student Chapter	Bryan Rogers	UNO	504-736-2772	thgem@gmail.com
Advertising-Log	Jennifer Connolly	Shell	504-728-6411	jennifer.connolly@shell.com
Auditing	J. David Cope	Ankor Energy	504-596-3672	dcope@ankorenergy.com
Awards	Michael N. Fein	W & T Offshore	504-831-4171	mikef@wtoffshore.com
Ballot	James Swaney	MMS	504-736-2677	james.swaney@mms.gov
Best Paper	David E. Reiter	Energy Partners Ltd	985-893-8072	dreiter@eplweb.com
Continuing Education	TBA			
Employment Counseling	Paul J. Post	MMS	504-736-2954	paul.post@mms.gov
Entertainment	Tom Klekamp	Amber Resources LLC	985-845-4046	klekamp@bellsouth.net
Environmental	Daisy Pate	Eustis Geotechnical Eng.	504-613-5798	dpate@eustiseng.com
External Affairs	Michael A. Fogarty	Sylvan Energy, LLC	603-523-4808	mike.a.fogarty@gmail.com
Field Trip	David Garner	Shell	504-728-6154	David.Garner@shell.com
Finance and Investment	James Swaney	MMS	504-736-2677	james.swaney@mms.gov
Historical	Edward B. Picou, Jr.	Consultant	504-529-5155	epicou@bellsouth.net
Membership/Directory	Penne Rappold	Shell	504-728-4338	prappold@gmail.com
New Geoscientists (NGNO)	TBA			
Nominating	Alfred H. Baker, Jr.	Beacon Exploration, LLC	504-836-2710	abaker1006@aol.com
Non-Technical Education	Duncan Goldthwaite	Consultant	504-887-4377	DGldthwt@aol.com
Office Operations	Arthur H. Johnson	Hydrate Energy International	504-464-6208	artjohnson51@hotmail.com
Publications Sales	Edward B. Picou, Jr.	Consultant	504-529-5155	epicou@bellsouth.net
Photography	J. David Cope	Taylor Energy Co LLC	504-589-0419	dcope@taylorenergy.com
School Outreach	Thomas C. Bergeon	Century Exploration	504-832-3772	Tom.bergeon@centuryx.com
Scouting	Carol Rooney	Consultant Geologist	504-835-1909	carolbrooney@aol.com
Technical Projects	TBA			
Ad Hoc Committee on				
University Support	Michael J. Gallagher	Eni Petroleum	504-593-7480	Michael.Gallagher@enipetroleum.com

NOGS LOG STAFF

Editor	Michael D. Miner	UNO	504-280-3866	mminer@uno.edu
Editor-Elect	Clare Falcon	Schlumberger	504-592-5385	cfalcon2@new-orleans.oilfield.slb.com
Auxiliary	Susie Baker	NOGA	504-466-4483	abaker1006@aol.com
Info Tidbits	Clare Falcon	Schlumberger	504-592-5385	cfalcon2@new-orleans.oilfield.slb.com
Drill Bits	Paul J. Post	MMS	504-736-2954	paul.post@mms.gov
Webmaster	Jannette Sturm-Mexic			webmaster@nogs.org

NOGS AUXILIARY

Officers		Phone	Directors	Year	Phone
President	Linda Peirce	504-393-7365	Ruth Ingram	2008-09	504-887-5404
1st Vice-President	Jean Jones	504-738-8091	June Perret	2008-09	504-881-9357
2nd Vice-President	Beverly Kastler	504-286-0897	Joan Sylvester	2008-09	504-738-2934
Secretary	Dolores Murphy	504-393-0878	Beverly Christina	2009-10	504-835-2383
Treasurer	Judy Lemarie'	504-393-8659	Peggy Rogers	2009-10	504-392-6323
Parliamentarian	June Perret	504-881-9357	Judy Sabate'	2009-10	504-861-3179
Member-at-Large	Susie Baker	504-466-4483			

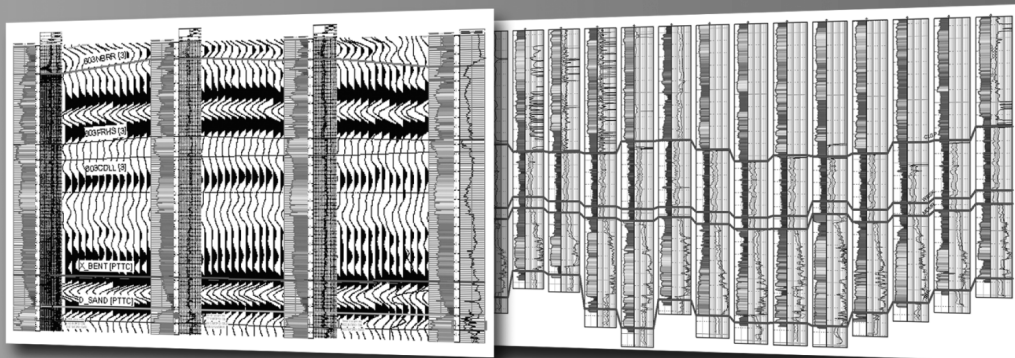
--- NOGS Contact List continued on page 10 ---

Define your geological model faster than ever before

NO MORE WAITING! Available today from IHS, easy and affordable access to one of the largest U.S. digital log collections

- More than 185,000 LAS files with over 1.5 million curves
- Regional subscription packages for today's active play areas
- Indexed to IHS well and production data
- Linked to the IHS Enerdeq® Browser for quick regional studies and log selection
- Available via IHSLogNet.com or on DVD
- Ready to use in PETRA and other log packages

Request a free 2' x 3' IHS digital log coverage map at ihs.com/energy/DigitalLogs



Use PETRA® to integrate digital log, well, production, perf, seismic and tops data. IHS is the only company to provide you with the complete picture.



Why wait? Subscribe today! Call **888.OIL.DATA** (645.3282) or e-mail sales.energy@ihs.com

The Source
for Critical Information and Insight™



from the President

NOGS has co-hosted and participated in two symposiums since the last letter. The forum on July 16th on Geologic Facts of Life for Flood Protection was well attended and located at the Levee Board's Headquarters near the Lakefront. The quality of the presentations was excellent and our own Dr. Mike Miner's topic on coastal erosion management during a transgression was impressive, well-done Mike. Dr. Juan Lorenzo from LSU presented his work on the application of shallow high-resolution seismic data in identifying soil changes and flaws in the existing levee systems. An interesting map by the LGS on Louisiana land loss since 1937 generated much interest and discussion. Kudos to Mike Merritt, the Commissioners, Annette and others who helped make this second forum a success and I hope it will continue to grow in the future.

The 12th annual Deep Water Technology Symposium has passed. It has taken a year of planning by the Committees to "pull off" this yet again successful event. The cooperation it takes between the drilling and petroleum engineers, geologists, and service industry personnel is a good example of what it takes to be a success in our petroleum industry today. Thanks to our NOGS volunteers for handling registration, awards and manning the NOGS Booth. Some of the volunteers that come to mind include Annette Hudson, Carol St Germain, Fran Wiseman, Art Johnson, Corine Armstrong and Tom Klekamp (our NOGS news photographer). Rakesh Kumar the general chairman kept it all together with the help of the everywhere present Tom Hudson. Robert Meltz organized the geoscience speakers and Emmitt Lockard the student poster presenters. Thanks to anyone else I may have missed. All of the technical talks were informative and worth attending. I found one talk on "the Gulf Serpent" deep-sea program quite unique. There are more species out there in deepwater besides engineers and geologists. Volunteer for next year!

Tom Hudson the General Chairman for the 2010 AAPG Convention here in New Orleans is in the

organizational stage of the event and is calling for volunteers that would like to participate in this important convention. I encourage all members and interested parties to sign on.

Left on the August table at this writing is the NOGS Luncheon on the 11th, the PTTC seminar on the 12th, FETCH on the 16th and API luncheon on the 19th.

Tom Klekamp has organized our "Kick Off" party for September 19th, register early as it helps with the planning and space is limited. Also Tom informs us The Lake Pontchartrain Basin Foundation 19th Annual Beach Sweep is September 20th.

Oct 5-9 is the GCAGS/GSA Convention in Houston. A special session in memory of Shea Penland will be held there.

October 18th is our Field Trip in conjunction with Earth Science Month. Thanks to Art Johnson, the Foundation will help fund Earth Science teachers to attend. More sponsors are needed for students, and volunteers are welcome. Thirty seats are reserved for NOGS. Sign up and share your knowledge in this great discipline with the less informed. Thanks to Kathy Haggard and Dave Garner for their efforts.

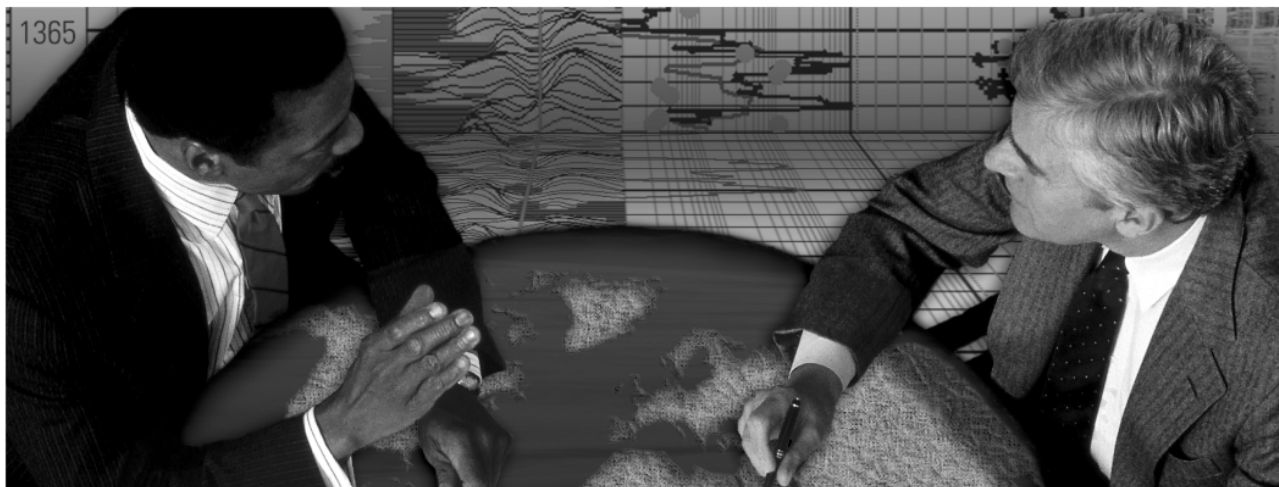
I note the passing of Norm Scaife, a former Chevron Exploration Geologist and District Development Geologist. Norm was the Mississippi District Supervisor and in the absences of the North Louisiana District Supervisor (Jerry Siler), I reported in to Norm at his home late one evening from a final Wilcox log run at Lake St. John Field. It was a long run and a long drive back to Jackson, Mississippi. Norm grilled me on every sidewall core I had had shot. Once he was convinced no one was trying to "pull one off" he smoothed my ruffled feathers with homemade devil's food cake a la mode. Norm was a good geologist; sharp on detail and a creative explorationist.

Bill

energyinformation

Business solutions for
the oil & gas industry

Schlumberger formation evaluation solutions deliver the answers you need. Our extensive portfolio of services, leading-edge technology, and advanced conveyance options keep you in communication with your well throughout its life cycle.



With formation evaluation technologies from Schlumberger, you can make the best decisions for optimized performance in every well.

The formation evaluation one-stop shop

Whether you are logging in open hole or behind the casing, our broad selection of services ensures the best solution for acquiring formation evaluation data. Tools can be conveyed while drilling or on wireline or pipe. We offer many specialized evaluation capabilities, from density, neutron porosity, and resistivity to borehole imaging, nuclear magnetic resonance logging, borehole seismic, formation pressure testing, and fluid sampling. Advanced triple-combo logging options include the VISION* formation evaluation and imaging-while-drilling services. Coupled with Pulse* telemetry and surveying services, the VISION family provides real-time formation evaluation data and enables optimum well placement.

High-speed wireline measurements are recorded with the Platform Express* logging services. The SlimXtreme* platform is designed for high-pressure, high-temperature environments and the ABC* Analysis Behind Casing services are used after casing is set.

Expert interpretation from the engineers and geoscientists of Schlumberger Data & Consulting Services brings all your data together to give you the answers you need. This expertise is available after logging is complete or as real-time two-way wellsite communication through the InterACT* real-time monitoring and data delivery system.

Schlumberger delivers leading-edge technology and interpretation expertise for all your formation evaluation needs, so every well benefits from the very best information.

For more information visit
www.slb.com/oilfield/formation_evaluation/

*Mark of Schlumberger

04-FE-114

Schlumberger

September 8 Luncheon Presentation
***** at the Holiday Inn Downtown Superdome *****

Creole - Geology breaths new life into 1st Gulf of Mexico Oil Field

presented by

William R. Finley
Independent Geologist

ABSTRACT

Creole Field was discovered by Superior and Pure in 1938 based on seismic data acquired in 1934. This discovery resulted from implementation of cutting edge technologies for the time, and field development continued with the use of cutting edge engineering technologies in drilling highly directional wells from a central location. A total of 20 wells were drilled and/or sidetracked from a central platform resulting in 10 producing wells on this platform with 7 pay sands. Exploratory drilling in 1956 resulted in adding 4 additional pay sands, with further development in the 60's and 70's establishing production in non producing fault blocks, and adding 2 deep gas sands to the inventory.

First Lesson - Perseverance Pays Off.

During the 60 years since discovery, the field produced a total of 8.6 mmbo and 13.6 bcfg. The field changed hands several time during this period, and the leases (then owned by Burlington) were finally dropped in 2000. After numerous delays, Rozel acquired leases over the Creole field area in 2005. We had worked on this prospect since 1996, taking nine years to acquisition.

Second Lesson - Just 'cause its old don't make it dead.

Three wells have been drilled to date, discovering 11 pay sands (10 of the original pays in new or previously unproduced fault blocks) with 4.4 mmbo and 4.4 bcfg reserves. Additional exploratory and development locations could prove up another 4 mmbo and 8 bcfg. The deep potential is currently being evaluated.

Third Lesson - Old fashioned Geology still works when technology fails.

New 3-D seismic data was acquired over the field in 1996, kicking off our exploration efforts in the Creole area. Unfortunately, this cutting edge technology did not facilitate our acquisition or subsequent drilling activity. A gas chimney exists over the field that makes a reliable, unbiased interpretation of the seismic data difficult to impossible. Instead, interpretive geologic mapping, and especially interpretation without prior bias lead us to a new round of drill bit exploration. The data thus acquired has turned the original interpretation around and opened the door to future opportunities.

BIOGRAPHY

William Finley grew up in Lake Charles, LA, and graduated from LaGrange High with honors in science and math. In 1984 he married Heather Warner. William started college at USL as a math major, but twisted off at the "Library" and got drafted in 1968. However, while serving he learned "if you want better, you have to work for it," and somehow that got him into Geology. He returned to college (USL) on the GI Bill and finished with a MS in Geology in 1975. His professional career started with Gulf Oil in New Orleans where he worked in exploration in the MAFLA Region, including some well site work in the Baltimore Canyon. After a transfer to Venice Area Development and subsequent disillusionment with

management, William accepted a position with Forest Oil in Lafayette in 1979. He worked with Forest until 1990 when he left to pursue his career as an independent. (His first contract job was with Forest Oil.) He joined SIPES that year and has been a member since. As an independent, he worked extensively with computer applications for geologic mapping and seismic interpretation with Forest Oil, ESRI in Columbia, SC, and Subsurface Consultants & Associates. He joined Rozel, LLC in 1996 and is currently a partner generating prospects and selling deals. A long time member of AAPG, SEG, and SIPES, William is the 2008 SIPES Vice President of National Energy.

THE LUNCHEON RESERVATION DEADLINE IS SEPTEMBER 3, SO CALL THE NOGS OFFICE - TODAY!

“And Looking Ahead...”

The next NOGS Luncheon will be October 6 at the Holiday Inn Downtown Superdome. Bernie Regel, Chevron, will present “4D Seismic in Field Development.” Contact the NOGS office to make your reservation.



GCSSEPM FOUNDATION 28TH ANNUAL BOB F. PERKINS RESEARCH CONFERENCE

Answering the Challenges of Production from Deep-Water Reservoirs:

Analogues and Case Histories to Aid a New Generation

December 7-9, 2008

Marriott Westchase: Houston, TX

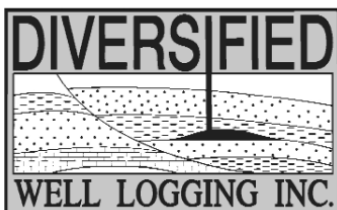
**Information and registration are available
at our web site:**

www.gcssepm.org



Relax. We'll keep you posted.

Your rig is offshore and you are not. How do you know what's going on so many miles away? You know because we tell you. Daily or even hourly, Diversified Well Logging's engineers update you on the status of your rig. We are your eyes and ears, especially when it comes to deep water or high pressure, high temperature areas. Diversified offers 24-hour surface evaluation. We provide secure and customized real-time data communication, in-house research and development and 24/7 on-call support for our equipment and our engineers. Whether you have a 10-day job or 110-day job, we provide the specialized attention you require. So, relax. We're with you every step of the way.



Serving the Gulf Coast for over 40 years.

New Orleans • Lafayette • Houston • Dallas • Corpus

800.280.2096

711 West 10th Street • Reserve, LA 70084 • Phone: 985.536.4143 • Fax: 985.536.2427
sales@dwl-usa.com



**PALEO
DATA**

**FULLY INTEGRATED AND
CENTRALIZED BIOSTRATIGRAPHIC
SERVICES**

- ▼ Single-source biostratigraphic databases
for increased accuracy and consistency
- ▼ Integrated foram / nannofossil analyses
- ▼ Complete wellsite paleo services
- ▼ In-house sample preparation
lab for quality-monitoring
and efficiency
- ▼ Sample pick-up service

6619 Fleur de Lis Drive
New Orleans, LA 70124
(504) 488-3711

www.paleodata.com

MCMORAN EXPLORATION CO.



MCMORAN OIL & GAS

www.mcmoran.com

NYSE: MMR

16676 Northchase Dr.
Houston, TX 77060
(281) 539-7600
Fax: (281) 539-7655

1615 Poydras
New Orleans, LA 70112
(504) 582-4000
Fax: (504) 582-4155

110 Travis St., Suite 140
Lafayette, LA 70503
(337) 735-9150
Fax: (337) 735-9151

NOGS CONTACT LIST

--- continued from page 3 ---

MEMORIAL FOUNDATION

BOARD OF TRUSTEES

		Company	Phone	E-mail
2008-09 Chairman	Arthur H. Johnson	Hydrate Energy International	504-464-6208	artjohnson51@hotmail.com
2008-09 Secretary	William M. Whiting	Consultant	504-947-8495	bootscon@aol.com
2008-09 Trustee	David E. Balcer	Chevron	985-773-6725	dbalcer@chevrontexaco.com
2008-09 Trustee	George T. Froming	Consultant	504-799-1918	gtfroming@yahoo.com
2009-10 Trustee	Michael C. Fauquier			
2009-10 Trustee	J. David Cope	Ankor Energy	504-596-3672	dcope@ankorenergy.com
2010-11 Trustee	Timothy J. Piwowar	Shell	504-728-4066	tim.piwowar@shell.com
2010-11 Trustee	Michael N. Fein	W & T Offshore	504-831-4171	mikef@wtoffshore.com

AAPG DELEGATES

Term Ends

		Company	Phone	E-mail
2009	David E. Balcer	Chevron	985-773-6725	dbalcer@Chevron.com
2009	William Whiting	Consultant	504-947-8495	bootscon@aol.com
2009a)	Nancye Dawers	Tulane University	504-862-3200	ndawers@tulane.edu
2009a)	David Cooke	MMS	504-736-2609	david.cooke@mms.gov
2011	Tom Hudson	Chevron	985-773-7163	tom.hudson@chevron.com
2011	Edward B. Picou, Jr.	Consultant	504-529-5155	epicou@bellsouth.net
2011a)	Brenda Reilly	Energy Partners Ltd.	504-799-4811	breilly@eplweb.com
2011a)	Robert Rooney	Century Exploration	504-832-3777	Robert.rooney@centuryx.com

New NOGS
Members
July 2008

Alexander S. Kolker PhD
Tulane University
Research Assistant Professor
Dept. of Earth and Env. Sci.
6823 Saint Charles Ave
New Orleans, LA 70118
504-862-3167

Lisa K. Meeks
Minerals Management Service
Senior Geologist
1201 Elmwood Park Blvd
New Orleans, LA 70123
504-736-5719

Carl Mr. Taylor
Ridgewood Energy Corporation
Sr Geologist/Geophysicist
Ste 280, 11700 Kary Freeway
Houston, TX 77079
281-293-8375

REINSTATED

Elizabeth S. Klocek
Minerals Management Service
1201 Elmwood Park Blvd
New Orleans, LA 70123
504-736-2952

SEI®

Seismic Exchange, Inc.

**Strategic Speculative Surveys
Geophysical Data Marketing & Management**

Your
**Full Service
National
Seismic Data
Marketing Firm**

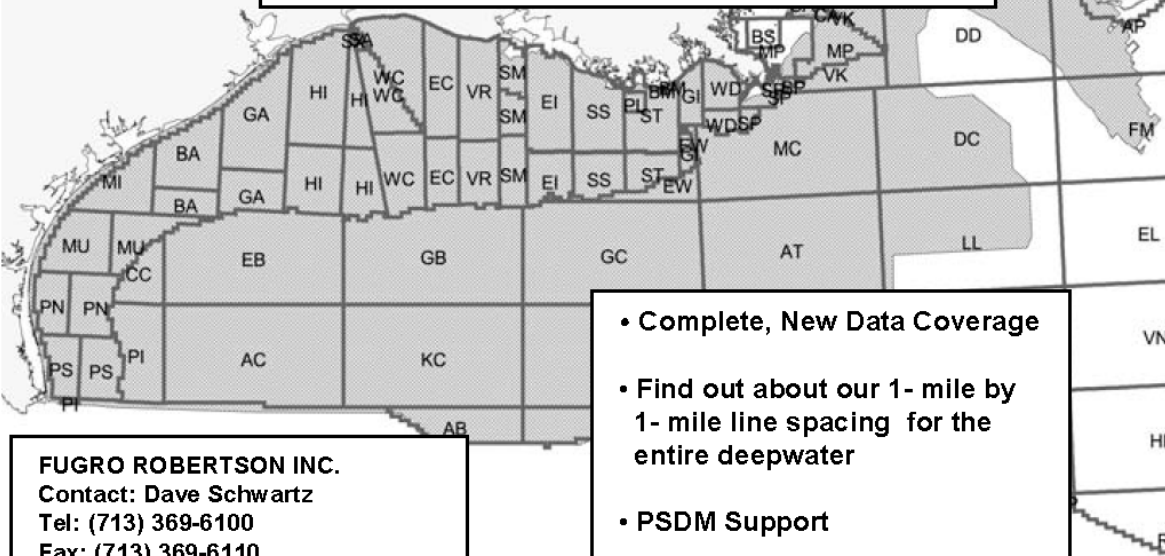
New Orleans
Dallas
Houston
Denver
Oklahoma City
Corpus Christi
Tulsa

201 St. Charles Avenue, Suite 4300, New Orleans, Louisiana 70170-4300
Telephone 504.581.7153 Fax 504.581.9591
www.seismicexchange.com

Robertson



**"The Place to Go"
For GOM Gravity Data and Interpretations**



FUGRO ROBERTSON INC.
Contact: Dave Schwartz
Tel: (713) 369-6100
Fax: (713) 369-6110
Email: infofri@fugro.com
www.fugro-lct.com

- Complete, New Data Coverage
- Find out about our 1- mile by 1- mile line spacing for the entire deepwater
- PSDM Support
- 3D Modeling



100 Northpark Blvd.
Covington, LA 70433

(985) 773-6000

"Serving the Oil & Gas Industry Since 1983"

Geological,
Geophysical &
Land Drafting

Anthony Catalanotto

President

Stefani Kelone

Drafting and Design



Geo-Draft, Inc.

A Professional Drafting & Graphics Firm

3349 Ridgelake Drive □ Suite 202 □ Metairie, LA □ 70002

Office: (504) 836-2882 Fax: (504) 836-2877

geodraft@bellsouth.net

CLK ENERGY, LLC

Oil & Gas Exploration and Production

1615 Poydras Street
Suite 1300
New Orleans, LA 70112

(504) 529-6100
(504) 596-2021
[Fax]
www.clkenergy.com

SAI

Sydboten & Associates, Inc.

*Geological and Geophysical Consulting,
3-D Seismic Interpretation
For Oil & Gas Exploration*

Ben D. Sydboten, Jr., CPG

124 Heymann Blvd., Suite 202
Lafayette, LA 70503

Office (337) 234-5288
Cell (337) 234-5491

NOGS FINANCIAL STATEMENT 2007-2008

The following accounts are tracked by the NOGS Treasurer:

1. Publications: Funds from sale of publications after postage expenses, refunds and amounts that are due HGS are paid. This account pays to the operations checking account \$300.00 per quarter for office overhead, etc.
2. FONO: Funds are from donations to the Friends of NOGS Office Fund (FONO). There are no expenses credited to this account and the interest from this account is to be used for office operations.
4. Operations Investment Account: Cash in excess is transferred to the Operations Investment Account.
5. Hibernia Homestead Checking Account. This account is used for the day to day operation of NOGS administration.

The following are the balances on NOGS accounts:

Hibernia Homestead Checking Account as of June 30, 2008:	\$24,853.79, up \$18,231.26 from June 30, 2007.
Citigroup Smith Barney Operations Account as of June 30, 2008:	\$147,200.59, down \$40,124.27 from June 30, 2007.
Citigroup Smith Barney FONO Account as of June 30, 2008:	\$167,890.31, down \$18,718.50 from June 30, 2007.
Citigroup Smith Barney Publications Account as of June 30, 2008:	\$81,117.60, down \$14,428.52 from June 30, 2007.

2007-2008 Operations Income – Expenses (excludes Smith Barney Accounts)

2007-2008 Income	\$150,735.65
2007-2008 Expenses	\$154,884.31
Net Decrease	(\$4,148.66)

Totals: Sum of All Accounts as of June 30, 2007:	\$476,102.32
Sum of All Accounts as of June 30, 2008:	\$421,062.29
Depreciation:	-\$55,040.03

J. David Cope, Treasurer 2007-2008

NOGS MEMORIAL FOUNDATION YEARLY REPORT 2007-2008

GENERAL FUND

Income:

Interest	\$20,915.47
Qualified Dividends	3,501.88
Other Dividends	6,658.26
Capital Gains LT	5,900.01
Capital Gains ST	471.97
Money Fund Earnings	3,618.81
Contributions	<u>46,988.87</u>

TOTAL \$88,055.27

Expenses:

Scholarships	\$23,500.00
Donations	\$2,500.00
Board Insurance	723.00
Accountant Fees	650.00
Scholarship Luncheon	300.00
Miscellaneous	<u>0.00</u>
TOTAL	\$27,673.00

Respectfully submitted,

Michael N. Fein
Chairman
NOGS Memorial Foundation 2007-2008

SMITH BARNEY ACCOUNT

Value of Investments June 19, 2007	\$ 689,343.85
Value of Investments June 30, 2008	\$ 665,594.21
The scholarships were presented at the September NOGS luncheon meeting.	
Net Increase (decrease)	(\$ 23,749.64)

VANGUARD ACCOUNT

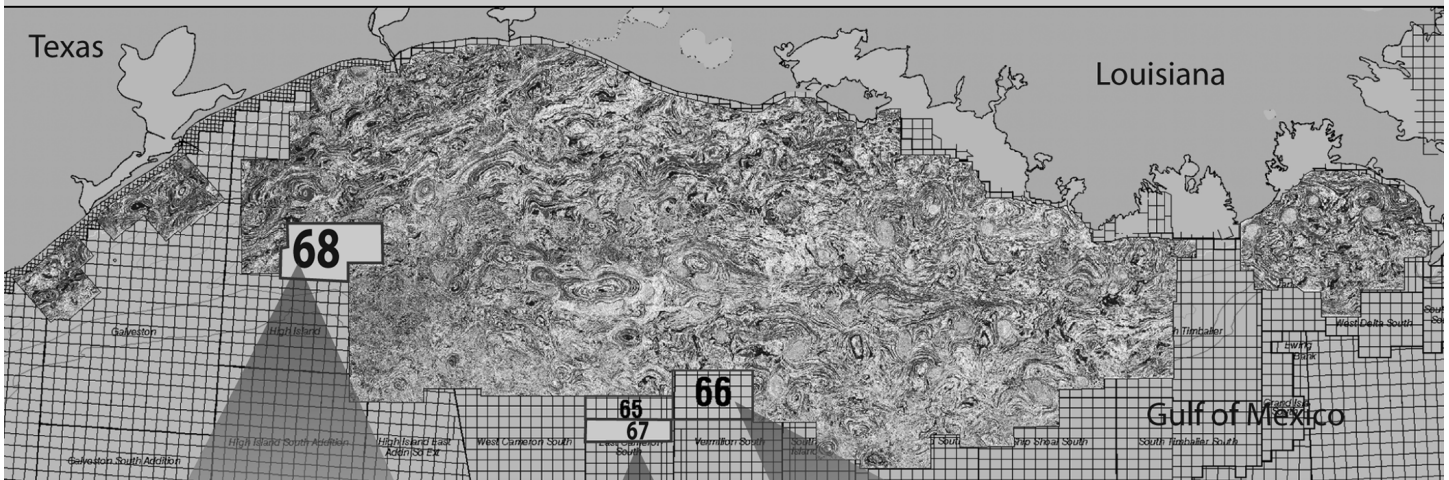
Value of Investments June 30, 2007	\$140,353.58
Value of Investments June 30, 2008	\$111,409.20
Net Increase (decrease)	(\$ 28,944.38)

Total Net Increase (decrease) (\$ 52,694.02)

NOGS has now awarded a total of 180 scholarships to date. The numbers break out as follows:

74 awards to LSU for a total of	\$140,500
30 awards to Nicholls State for a total of	\$ 40,000
70 awards to Tulane for a total of	\$134,000
76 awards to UNO for a total of	<u>\$143,000</u>
for a grand total of \$457,500 in scholarships awarded.	

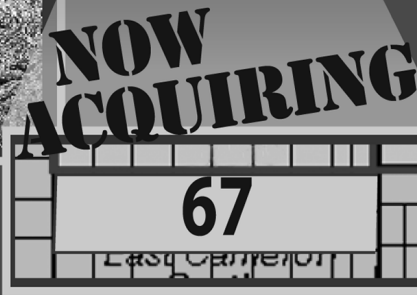
By the time you read this ad, this map will be out of date.



Because our crews are acquiring data every day, all day
to expand Fairfield's 3D data base.



**High Island (68) &
E. Cameron S. (67)**
30,000' offsets,
11 second records
processed in mid 2008



**E. Cameron South (65) &
Vermilion South (66)**
30,000' offsets, 11 second records
processed in January 2008


Visit www.fairfield.com to view Fairfield's multi-client coverage of 3D GOM data.



FAIRFIELD
INDUSTRIES

Houston 281/275-7500
New Orleans 504/525-6400

Proud to be
an American
company



Join us for an evening of
excellent food, conversation, and spirits

**NOGS
KICK-OFF PARTY**

**FRIDAY, SEPTEMBER 19TH
7-10 PM**

NEW CITY GRILL

2700 Metairie Rd.
Metairie, Louisiana
Valet parking available

\$35 per person
Cash Bar
Door Prizes!

Call the NOGS Office for reservations
504-561-8980



2008 Joint Annual Meeting

Celebrating the International Year of Planet Earth

5 - 9 October 2008 | Houston, Texas, USA | George R. Brown Convention Center

Registration is now open for GCAGS/GCSSEPM 2008

Register as a GCAGS member to receive a free copy of the GCAGS Transactions.

Consider these numbers:

More than 5,500 poster and oral papers... 10 overarching plenary sessions on the most important topics impacting our sciences today, featuring top leaders in our fields... a full schedule with over 450 sessions of programming for five different societies... Sound intriguing?

How about: 33 field trips, scheduled before, during, and after the meeting... 7 tours in and around Houston... 38 short courses/workshops on diverse and relevant topics... more than 300 exhibitors with over 450 exhibit booths displaying and demonstrating the latest technology and research applications... Want more?

Think about nearly 10,000 scientists and students coming together in an unprecedented joint technical program featuring papers from all geological disciplines and the soil, agronomic, and crop sciences. This should prove to be the largest gathering of geoscientists this year

This adds up to one singular opportunity for you.

Come to Houston, Texas, 5-9 October 2008, to celebrate the International Year of Planet Earth. Professionals, students, and media from all over the world will find useful and valuable information at this unprecedented Joint Annual Meeting, held at the George R. Brown Convention Center in Houston, Texas, USA.

The Gulf Coast Association of Geological Societies with the Gulf Coast Section of SEPM, the Geological Society of America, the Soil Science Society of America, the American Society of Agronomy, and the Crop Science Society of America have joined together to highlight and stimulate discussions in areas of common interest across the diversity of disciplines and organizations represented by our members. Areas of mutual interest include energy, water resources, education, and earth systems, to name a few. The meeting is hosted by the Houston Geological Society.

The GCAGS president's reception has been expanded this year and it is a ticketed event to get a good head count. However, the cost is modest and the benefits are great.

Important Links found on <https://www.acsm meetings.org/>:

Online Meeting Registration
Online Housing Form
Joint Events
Field Trips
Tours
Houston Information
International Travel

Important Dates & Deadlines

Early Bird Registration

closes 14 July 2008


Standard Registration


closes 2 September 2008

Childcare Registration

closes 5 September 2008

A Company that Shines

 Geophysical Products

 Geological Products

 Imaging Services



TGS has been providing best-in-class multi-client data and services to successful E&P companies for over a quarter century. Our geophysical and geological data products are distributed around the globe and include one of the youngest and best targeted multi-client seismic libraries, extensive magnetic and gravity data, the industry's largest global database of digital well logs, and regional interpretive products. We also provide high-end depth imaging services to help resolve complex seismic imaging problems. Together, our products and services give you a more complete picture of the subsurface to help your exploration program *shine*.

For more information, visit www.tgsnopec.com today.



Geological
Products



Geophysical
Products



Imaging
Services

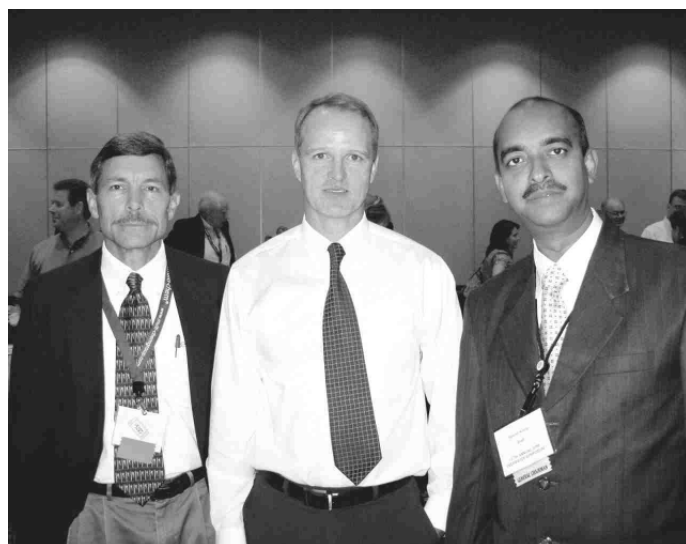
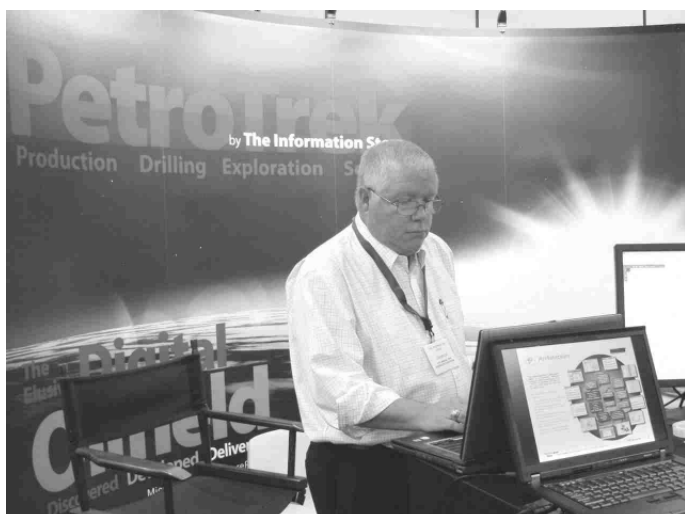
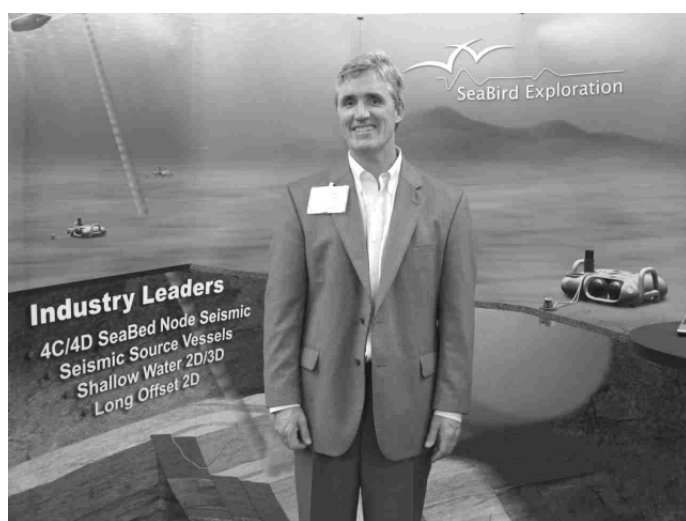
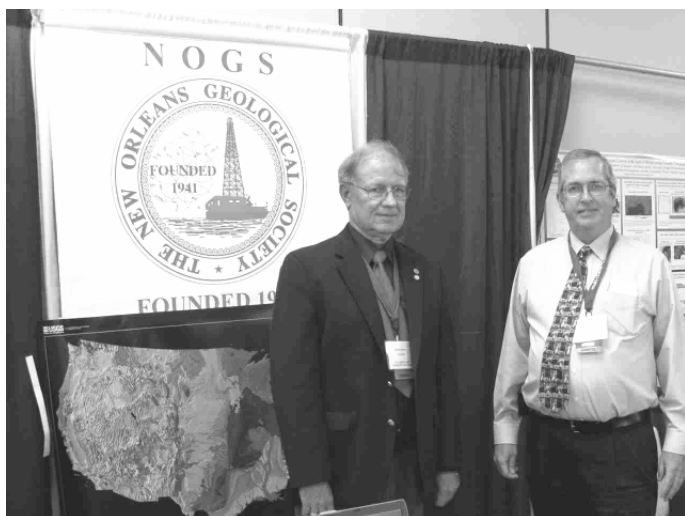
www.tgsnopec.com

NORWAY +47 66 76 99 00 | USA +1 713 860 2100 | UK +44 (0) 1234 272122 | AUSTRALIA +61 8 9480 0000 | RUSSIA +7 495 959 8117

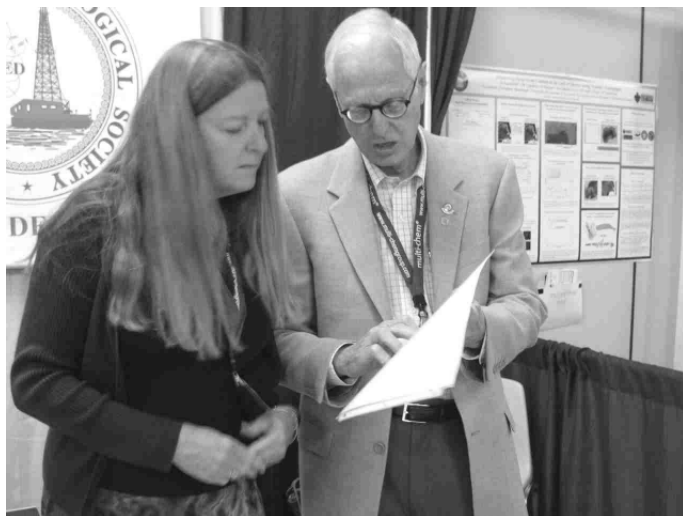
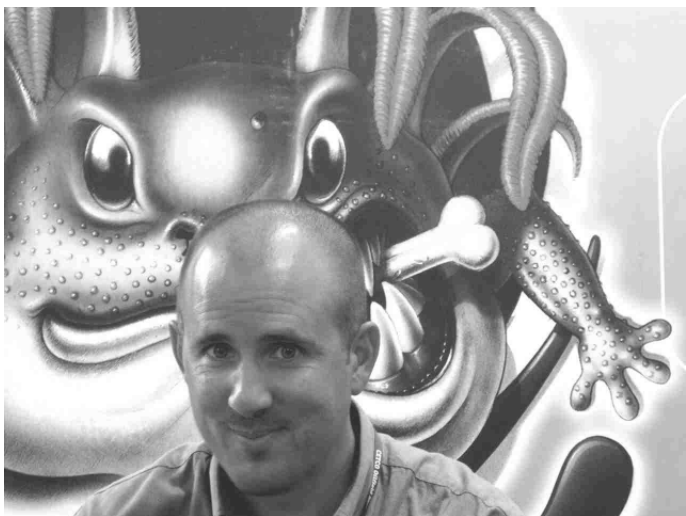
©TGS-NOPEC Geophysical Company. All Rights Reserved.



2008 Deepwater Technology Symposium









THE NEW ORLEANS GEOLOGICAL SOCIETY, INC.

810 UNION STREET SUITE 300, NEW ORLEANS, LA 70112

TELEPHONE: (504) 561-8980 FAX: 561-8988 E-MAIL: NOGS@GS.NET WEBSITE: WWW.NOGS.ORG

MEMBERSHIP APPLICATION

Name (Last, first, middle initial) _____

Date _____

Company _____

Title _____

()
Phone Number

()
Fax Number

E-mail Address

Work Address (PO Box/Street, City, State, Zip, Country) _____

Home Address (Street, City, State, Zip, Country) _____

()
Phone Number

Preferred Mailing Address (check one): Work _____ or Home _____

Spouse's Name _____

Other Professional Society Memberships (AAPG*, AIPG, GSA, etc.) * Please indicate AAPG member category

College/University: _____

Degree _____

Year _____

Major _____

Explain, in brief, your affiliation with the petroleum industry:

Please mark appropriate classification:

☐ New Member

☐ Reinstatement

☐ Renewal

ANNUAL DUES: \$25.00 FOR ACTIVE OR ASSOCIATE

\$12.50 STUDENT MEMBERSHIP*

*No initial dues for students in the Sponsorship Program

-- Please mail application to the NOGS office with check payment or Visa/MasterCard/American Express acct# and exp. date --

Committee preference (please indicate choices):

☐ AAPG Student Chapter

☐ Advertising

☐ Awards

☐ Ballot

☐ Best Paper

☐ Computer Applications

☐ Continuing Education

☐ Employment Counseling

☐ Entertainment

☐ Environmental

☐ External Affairs

☐ Field Trip

☐ Finance & Audit

☐ Historical

☐ Membership/Directory

☐ Memorial Foundation

☐ NOGS LOG

☐ New Geoscientists (NGNO)

☐ Nominating

☐ Non-Technical Education

☐ Photography

☐ Program/Luncheon

☐ Publication Sales

☐ School Outreach

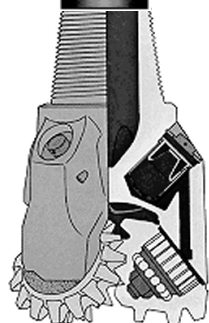
☐ Scouts: Boy and Girl

☐ Sponsorship

☐ Technical Projects

South Louisiana and Offshore Exploration and Production Activity

DRILL BITS



- **Noble Energy, Inc.** on 15-July announced that it had identified a high-quality reservoir at the Tortuga prospect in MC Blocks 561 and 605. The Noble (50% WI) operated MC 561 #2 was drilled to a TD of 19,885 feet and encountered the primary objective water-bearing. However, natural gas in a secondary objective. Water depth at the location is 6,340 feet. Two miles northwest, Burlington Resources abandoned the MC 561 #1 at a TD of 14, 774 feet in mid-2001. A by-pass, drilled later that year to a TVD of 15,603 feet (MTD 15,598 feet) was abandoned later that year. MC 561 and 605 were originally acquired by Burlington (66.67% WI) and Hess (33.33%) for bonuses of \$9,106,560 and \$2,355,840 respectively at OCS Sale 169 in 1998.

The well has been temporarily abandoned pending future development plans.

- **BHP Billiton** announced on 24-July that its Neptune Tension Leg Platform (TLP) in the deepwater GoM, which began production on 6 July, has five of six wells on-line and oil production has already been ramped up to full design capacity of 50,000 BOPD. Natural gas production continues to ramp up.

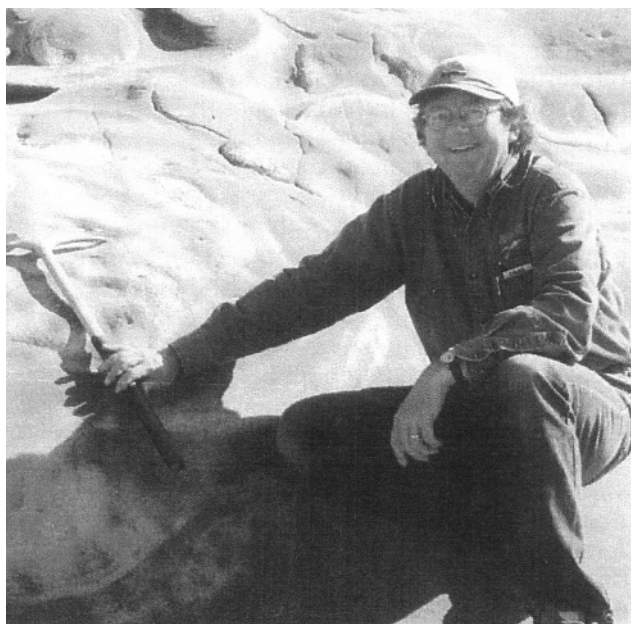
The Neptune TLP was installed in 4,250 feet of water on GC Block 613. Field development includes six initial subsea wells tied back to the TLP. Further development wells are expected to be drilled after interpretation of new seismic data, which will be obtained in the latter half of 2008.

The Neptune field comprises five blocks: AT 573, 574, 575, 617 and 618 where water depths range from 4,200 to 6,500 feet.

BHP Billiton is the operator of Neptune with a 35% WI. Partners include Marathon Oil Corporation (30% WI), Woodside Energy (USA) Inc. (20% WI), and Maxus (U.S.) Exploration Company (15 % WI).

- **Bayou Bend Petroleum Ltd.** commenced production on 24-July at its Eagle's Nest field in EI Block 6 in the state waters of Louisiana. The well was drilled as part of the Marsh Island project with partner Contango in the second quarter. As of 30-July, the well was FARO 35.1 MMCF/D and 744 BC/D with 9170 psi FTP. The well is tied into Contango's EI 11 production facility for processing and sales. Bayou Bend has a 12.453525% WI in the prospect.
- The planned multi-year drilling program for which **StatoilHydro** is searching for a partner could involve leases encompassing 17 prospects, six of which are near-term drilling candidates (<http://www.waterous.com/statoil2008/overview.asp>). As additional prospects are matured, the strategic partner(s) could have the opportunity to participate in additional drill options, and could to earn up to 50% of StatoilHydro's interest in these exploration prospects wherein StatoilHydro will retain operatorship. The prospects are located in the Miocene and Paleogene trends in the deepwater GoM and are advertised as having a reserve potential in the billions of barrels. StatoilHydro has executed drilling contracts for two new-build deepwater dynamically-positioned drilling rigs capable of executing the exploration drilling program, which will commence in 2009. The majority of the prospects and acreage are in Keathley Canyon, although near-term drillable prospects are also located in Mississippi Canyon, Green Canyon, Walker Ridge, and Alaminos Canyon. Proposals from interested parties are due in mid-October.

- Paul Post



Brian Joseph O'Neill

1954 – 2008

Our Society lost a dedicated member on June 26th with the death of Brian O'Neill. He fought a valiant fight with T-cell lymphoma for two years before succumbing. He was a most-valued contributor to the NOGS School Outreach Committee. Brian liked nothing better than being surrounded by bright-eyed youngsters as he explained the differences in his beloved dinosaurs.

Brian joined Shell in 1979 in Houston as a paleontologist after graduating with an MS degree from the University of Wisconsin-Madison. In 1981, he transferred to Shell Offshore Inc. to join the paleontology staff, as Shell's offshore drilling continued to accelerate and additional staff was needed. Brian excelled in the discipline and quickly demon-

strated his skills at manipulating well fossil data using continuously evolving sophisticated software applications that enhanced interpretations of correlation events and paleobathymetry. He, and several colleagues from other companies, created a very successful short course for geoscientists who wanted to learn more about the "hows and whys" of paleontology in the Gulf Coast Basin. Subsequently, Brian taught paleo short courses all over the world at Shell installations and at universities.

Although Brian never held an office in NOGS, he became active in SEPM Society for Sedimentary Geology. Brian held many positions in this organization including serving on the SEPM Council as Councilor for Paleontology and two terms on the K-12 Earth Science Committee. While serving on this committee, he authored four publications. Brian was president of the North American Micropaleontology Section of SEPM. His activities record at SEPM headquarters shows he participated in some fourteen committees. With such an enviable record of selfless dedication to the organization, Brian was awarded Honorary Membership in the Society at the national AAPG/SEPM Convention in April of this year in San Antonio.

Brian also held membership in the Geological Society of America, Micropalaeontology Society, and Cushman Foundation for Foraminiferal Research, of which he is a Fellow and a member of the Board of Directors since 2004. He was a member of the Paleontological Research Institution, and the Paleontological Society. Please note the emphasis on paleontology. He was also a member of the Gulf Coast Section of SEPM and served as vice-president in 1987-1988. I could go on, but I believe I have given you a just sampling of Brian's dedication to his chosen profession. He was also an active member and participated in many volunteer activities of the American Association of Petroleum Geologists.

In recognition of his outstanding achievements at Shell in the past 29 years, and in recognition of his outside professional activities, Shell International Exploration and Production had recently promoted Brian to Global Biostratigraphy Lead.

Brian was an exceptionally gifted individual in many areas. He will be greatly missed by all.

Edward B. Picou, Jr.



Eni Petroleum

1250 Poydras Street
Suite 2000
New Orleans, LA 70113
Tel: (504) 593-7000
Fax: (504) 593-7745

1201 Louisiana Street
Suite 3500
Houston, TX 77002
Tel: (713) 393-6100
Fax: (713) 393-6205



**Shell has worked in partnership
with the NOGS for many years, and
is proud to count the society among
its closest business associates.**

The New Orleans Geological Society was organized in 1941 to foster scientific research and advance the science of geology. Particular emphasis is laid on the exploration for and production of petroleum and natural gas. Related objectives include encouraging the adoption of improved methods of exploration, disseminating pertinent geological and technological data, and maintaining a high standard of professional conduct among its members.

www.shell.com/us.sepc

BIG BANG BLAMED ON SOFTWARE UPGRADE! [Should Have Used KINGDOM®!]

**Avoid system-wide consequences
from upgrading your geoscience software.**

KINGDOM, from SMT, gives you the best in technology today without requiring that you abandon existing solutions. It's easy to use, coexists with your current software, and provides cutting edge, scaleable functionality - getting you productive quickly! In fact, 9 of 10 customers surveyed say KINGDOM is easier to use than the competition.

No wonder KINGDOM is the industry leader for PC-based interpretation. And our reputation is...expanding.



Visit our Web site at www.seismicmicro.com/smt-bigbang10 and learn why KINGDOM 8.2 is the market leader for PC-based interpretation with over 2,500 companies in 85 countries.



Intuitive. Integrated. Interpretation.

America +1 (713) 464-6188 **Asia** +65 6220 1089 **Europe** +44 (0) 20 8240 6524

***NOGS Fall Field Trip –
October 18th 2008
The Baton Rouge Fault
... and its Friends
from New Orleans to Baton Rouge***

Ponchatoula NE SW DOQQ



1998 IR aerial

Trip Date: October 18th 2008

Leaders: Woody Gagliano (Coastal
Environments), Kathy Haggar
(Riparian, Inc.), and Rick McCulloch (LGS)

Time: 7:30a.m. depart UNO geology parking lot and return about 8:30p.m. the same day.

Cost: \$100 per person. Includes bus transportation, snacks/drinks, box lunch, dinner, and boat ride to Cypress Flats at Alligator Bayou in Prairieville.

Reservations Required - Limited Seating - First Come Basis
30 NOGS Members/Guests/Spouses

Contact Annette at NOGS Office ASAP to reserve your seat
at 504-561-8980 or fax 504-561-8988

(20 seats reserved for teachers and students sponsored through the generosity of members and friends of NOGS.)

What you'll see and hear on the road:

The Baton Rouge Fault and many of its friends are now easily identified in aerial photography, satellite imagery, and LIDAR elevation data. However, this trip provides an opportunity to see many faults at various locations along the north shore between Slidell and Baton Rouge up close. Since faults in southeast Louisiana are relatively subtle features, their zones of deformation tend to be important clues to their presence and activity. We'll see the signs and expressions of faults at various locations - Hwy 11 bridge, Goose Point, Maurepas vicinity, Livingston Parish Gum Swamp, through Baton Rouge streets, and Ascension Parish's Spanish Lake Basin. While we roll along the road we'll talk about the faults and their contributions in shaping Louisiana from the Jurassic to the present, how and where the ancient native Americans followed the Mississippi River (whose courses likely changed by fault movements), earthquakes and the seismically quiet mega slumps of listric faults, the plant communities that react to the gradual change in slope and subsidence of the land, and the urban impact of geo-hazards (a/k/a faults) to levees, schools, and infrastructure. We'll have dinner at Alligator Bayou and travel on the Alligator Queen to see Cypress Flats, a fault lake within the Spanish Lake Basin.

This trip will provide teachers and students with a chance to see the landscape of Louisiana through the eyes of geologists. Another great benefit to this trip will be to meet, and perhaps to mentor, a teacher or a student who is interested in geology.

We offer a special thanks to all who sponsored the teachers and students who will join us in seeing "The Baton Rouge Fault and its Friends."

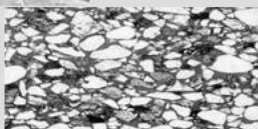
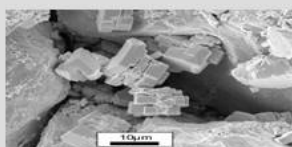
Complex Reservoir Evaluation?

Log Calibration SATURATION MODELING
Reservoir Performance FRACTURE DESIGN PVT Analysis
Completion Design Sand Control
Reserve Estimates Flow Assurance Borehole Stability
COMPREHENSIVE CORE ANALYSIS

Simple Solution: Rely on Experience!

Rely on Core Laboratories!

- Comprehensive core analysis laboratory and wellsite services
- Comprehensive reservoir fluid laboratory and sampling services



New Orleans: 504-733-6583

Lafayette: 337-837-8616

Houston: 713-328-2673

www.corelab.com

SURVIVOR™

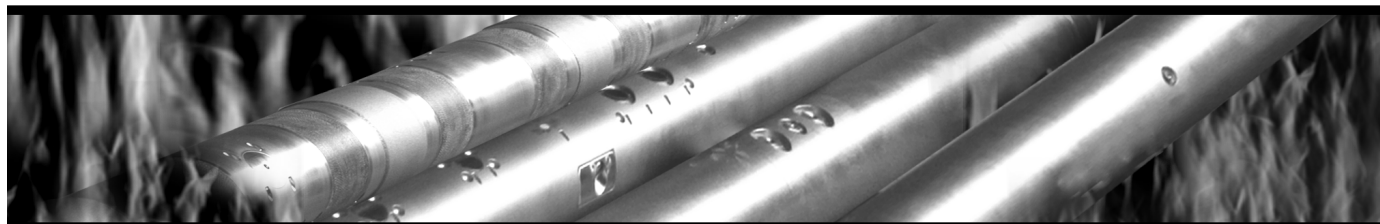
LOGGING-WHILE-DRILLING SUITE

The SURVIVOR™ Suite uses our highly reliable HDS-1 Directional Gamma Ray technology, Array Wave Resistivity tool, Slim Density Neutron Standoff Caliper tool and our Dynamic Pressure Module to create a complete system for logging in hostile drilling environments.

Temperature Rating.....350°F (175°C)

Pressure Rating25,000 psi

Logging Capacity300+ circulating hours



RELIABILITY. ACCURACY. VERSATILITY. WE DELIVER.

e-mail: pfmarketing@pathfinderlwd.com

www.pathfinderlwd.com

© 2006 Pathfinder Energy Services, Inc. All rights reserved.

PATHFINDER®

- **Assessment of oil and gas resources:** The USGS released an assessment of oil and gas resources that they deem recoverable from northern latitudes north of the Arctic Circle. For more information check out the article at: <http://www.usgs.gov/newsroom/article.asp?ID=1980>
- **NASA's report on Saturn moon:** The latest results from the Cassini spacecraft released by NASA's JPL show Titan, Saturn's moon has hydrocarbon filled lakes on it's surface as part of a methane-based hydrological cycle. For more details go to: <http://www.jpl.nasa.gov/news/news.cfm?release=2008-152>
- **OneGeology:** OneGeology, a new web portal for worldwide geological map access was launched at the IGC this month. OneGeology's homepage is at: <http://www.onegeology.org/home.html>

- *Clare Falcon*

New Orleans Geological Auxiliary News

It is my privilege to have been given the opportunity to serve as President of the New Orleans Geological Auxiliary for 2008-2009. Being involved with the auxiliary and its members for the past several years has been such an enjoyable and meaningful experience for me that I would like to invite those of you who have not joined or who have been inactive to come socialize with us and have fun at our upcoming events.

We will begin our new year on September 10th with a luncheon at Jean Jones' beautiful home. The event will be co-chaired by Alma Dunlap, Beverly Christina, and Camille Yeldell. This is always a special occasion as it gives us a chance to catch up on summer happenings and to get acquainted with prospective members.

On November 12th, the Auxiliary will be dining at the New City Grille on Metairie Road. Be assured that Judy Lemairié, Dolores Murphy, and Ann Gilbert will plan a lovely and delicious luncheon for this event.

We'll be "across the lake" for our Northshore Luncheon at Benedict's on February 11th. Co-chairs, Joan Sylvester and Pat Williamson, will make certain that this will be an enjoyable day for all!

Beverly and Everett Kastler have generously offered their beautiful home for our Spring Social which will be held on March 21st. Beverly, with the help of Susie Baker and myself, will do our best to make this a special occasion for all of us and our spouses or significant others.

Our year will conclude on May 20th with our Installation Luncheon at Ralph's on the Park. June Perret and Josie Markey will make sure we end on a "high note" by planning a wonderful day in honor of the upcoming slate of officers and directors.

In addition to these NOGA events, the Auxiliary is also happy to assist NOGS with their social plans. Amber Klekamp and Mary Walther will help with the Kick-Off Party. Susie Baker and I will be assisting with the Christmas Party.

Many thanks to all who will be involved in making this year a pleasurable one. Remember, if you are not yet a member of NOGA, please consider joining us. Send in the attached application now and mark your calendar for a fun-filled year!

Linda Peirce, NOGA President

NOGA Application Form

Dues: \$25.00

Name _____

Home Address _____

Home phone _____

Husband's Name _____

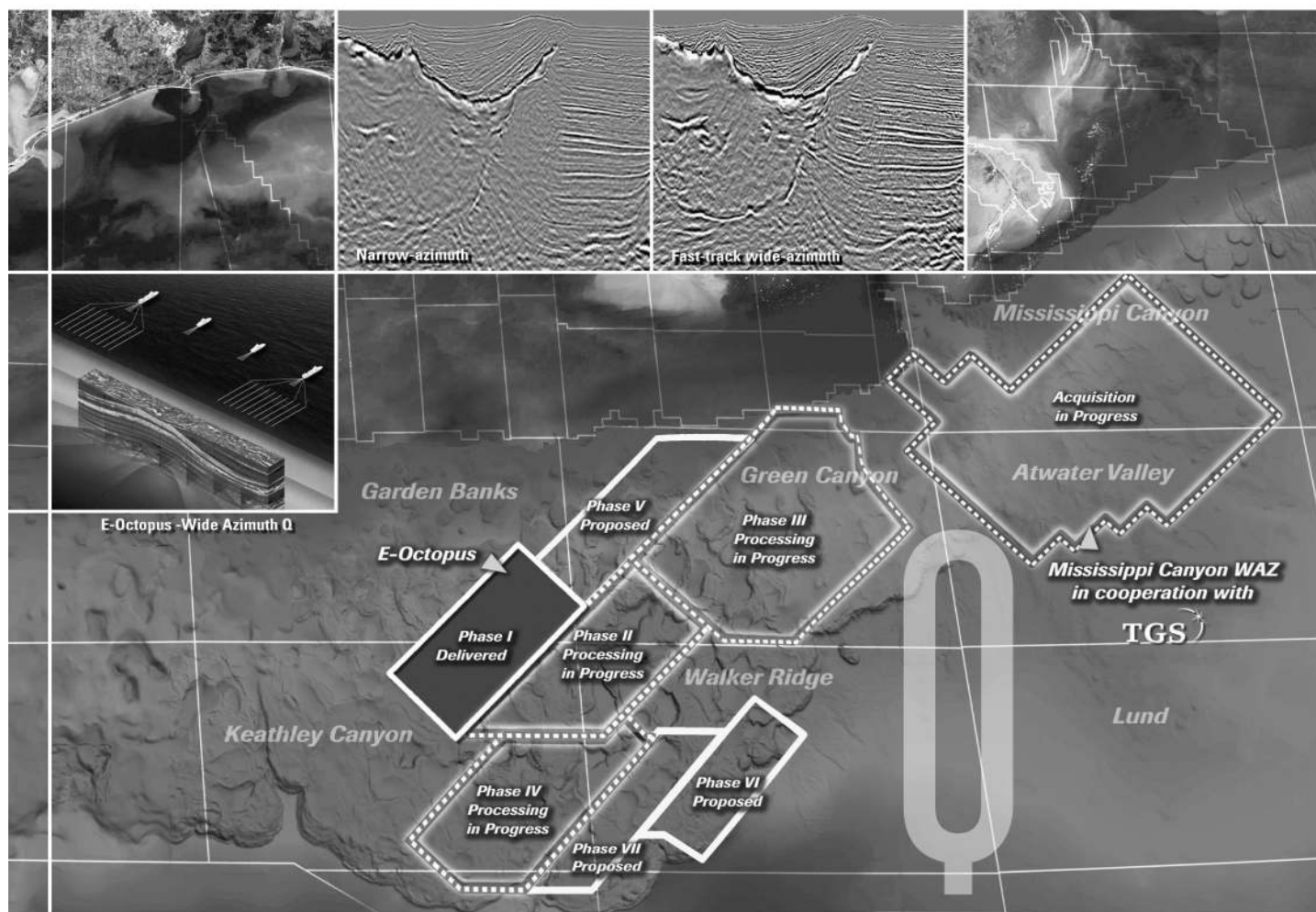
Husband's Company _____

*Please make check payable to New Orleans Geological Auxiliary and
mail with application to: Judy Lemarie'*

2 Yosemite Dr

New Orleans LA 70131

Expand your opportunities ...



Experience game-changing advances in subsalt imaging.

Our revolutionary E-Octopus wide-azimuth surveys, and our wide-azimuth cooperation agreement with TGS in the Mississippi Canyon area, utilize industry-leading Q-Marine* technology, survey design, and state-of-the-art processing.

Experience the benefits of higher signal-to-noise ratio, broader bandwidth, and a greater range of azimuths – designed to give you greatly improved confidence beneath challenging subsalt formations.

Excellence in technology – Experienced professionals.

To learn more about the products available from the wide-azimuth phases already acquired in the Gulf of Mexico and about our new acquisition projects, call +1 713 689 1000.

Multiclient to the Power of E

*Mark of Schlumberger © 2008 Schlumberger DB-SE-116

Multiclient^E

www.slb.com/westerngeco



THE NEW ORLEANS GEOLOGICAL SOCIETY MEMORIAL FOUNDATION, INC.

The Memorial Foundation is an IRS Tax Exempt Code #501 (c)(3) organization. The Federal I.D. is: 72-1220999. Please consider making your donation prior to the close of this year's fiscal cycle which is September 30, 2008. Your individual support in any amount will help meet the IRS Guidelines for our Foundation. *Thanks!*

\$15,000 AND ABOVE

Olga Braunstein Succession

Gibbett Hill Foundation

In Memory of Steve & Marion Millendorf,

William J. Prutzman, Roger G. Vincent & Ron Youngblood

\$10,000

The Booth-Bricker Fund

In Memory of Richard W. Boebel

\$7,000 TO \$9,000

GCAGS Matching Funds

Paul C. Mc Williams

\$3,000 TO \$4,000

NOGS Golf Tournament May 2007

In Memory of Bill Craig

\$1,000

C & R Exploration, Inc.

In Memory of Richard W. Boebel

Thornton E. Anderson

In Memory of Richard W. Boebel

\$500

Carlo and Beverly Christina

In Memory of Richard W. Boebel

Joanne J. Clark and Family

In Memory of Richard W. Boebel

Joffre J. Crouere

In Memory of Richard W. Boebel

\$2,000

Bridwell Oil Company

In Memory of Richard W. Boebel

\$600

Richard W. Boebel

\$250 TO \$499

Carlo C. Christina

In memory of Robey H. Clark

In Memory of Al Gilreath

In memory of Allen R. Stern

Seismic Exchange, Inc.

In Memory of Richard W. Boebel

Carol and Gilbert St. Germain

In Memory of Richard W. Boebel

UP TO \$249

John Edward Allen, Jr.

Don and Carol Andrews

In Memory of Thomas H. Philpott

In Memory of William B. Rodan

Donald I. Andrews

In Memory of T. Wayne Campbell

Robert J. Ardell

In Memory of Robert W. Sabate'

Memory of Richard W. Boebel

In Memory of Francis X. Bland

Peggy and Robert Armstrong

In Memory of Richard W. Boebel

Edward C. Austin

In Memory of Charles L. Jones

Bruce Bahlinger

In Memory of Thomas H. Philpott

Al and Susie Baker

In Memory of Robert W. Sabate'

Jack R. Bantari

Abraham Biadgelgne

Maurice N. Birdwell

In Memory of Jim Davis

Cynthia A. Bradford

Eric C. Broadbridge

Hilary James Brook

Robin A. Broussard

In Memory of Charles L. Jones

In Memory of Thomas H. Philpott

Jack G. Bryant

Rob Burnett

Chevron

Matching Funds

Arthur F. Christensen

Ellen F. Clark

James S. Classen

In Memory of All Gilreath

Clarence F. Conrad

Willis E. Conatser, PhD

Charley and Trudy Corona

In Memory of Mary Kirk Barrell

Charley Corona

In Memory of Charles L. Jones

In Memory of McLain Forman

In Memory of Richard W. Boebel

Michael A. Danahy

Robert M. Danos

In Memory of Robert W. Sabate'

M. R. "Bob" Douglass

FONO FUND

The FONO Fund accepts contributions that are invested and the income dedicated to assure sufficient financial resources will always be available to maintain the NOGS business office. Contributors are reminded that donations to the FONO Fund are not covered by the IRS 501 (c)(3) tax exempt classification and should be reported as a business expense on your IRS tax report.

\$600

Richard W. Boebel

Willis E. Conatser

\$500

James A. Hartman

In Memory of Robert W. Boebel

In Memory of Robert W. Sabate'

UP TO \$249

Woods W. Allen, Jr.

Donald I. Andrews

Alfred H. Baker Jr.

Philip Beron, Jr.

Joseph E. Boudreaux

Cynthia A. Bradford

Eric C. Broadbridge

Hillary James Brook

Jack G. Bryant

In Memory of Shelby W. Smith

J. Sybil Calloway

Anthony Carollo Jr.

Arthur F. Christensen

James S. Classen

Richard P. Colomes

Clarence F. Conrad

Joffre J. Crouere

John Dombrowski

Merle J. Duplantis

Richard A. Edmund

Parrish N. Erwin, Jr.

Niles R. Faulk

Michael N. Fein

Laurens Gaarenstroom

Mark J. Gallagher

Arthur J. Garden

Duncan Goldthwaite

Peter G. Gray

Bernard L. Hill, Jr.

Owen R. Hopkins

Thomas A. Hudson

Kenneth Huffman

Paul Jurik

Tom Klekamp

Richard G. Klibert

William J. Malin

Jeannie F. Mallick

George M. Markey, Jr.

Louis L. McCormick

Robert H. Monahan

Robert G. Murphy

William J. O'Leary

Richard A. Olsen

William S. Peirce

Edward B. Picou, Jr.

In Memory of Robert W. Sabate'

Jaser N. Rafidi

James P. Raymond, Jr.

Brenda E. Reilly

C. R. Rondeau

Monte C. Shalett

Rudolf B. Siegert

Raymond Stephens

Stephen Szydluk

Scott A. Wainwright

Roy C. Walther

Arthur S. Waterman

Robert C. Weissmann

Louis E. Willhoit, Jr.

James W. Yeldell Jr.

Jim Zotkiewicz

CONTRIBUTIONS FOR BOTH FUNDS

THROUGH AUGUST 27, 2008.

DONATIONS ARE LISTED FOR ONE YEAR.

Merle J. Duplantis

George H. Evans

Exxon Mobil Matching Funds

Michael N. Fein

Brent J. Foster

In Memory of Robert W. Sabate'

Laurens Gaarenstroom

Sherwood M. Gagliano

Mark J. Gallagher

David Garner

Peter G. Gray

Angela M. Hessler

Bernard L. Hill, Jr.

In Memory of Robert E. Osborne

Owen R. Hopkins

John H. Houser

Dan E. Hudson

Thomas A. Hudson

Kenneth Huffman

Thomas E. Johnson

Tom Klekamp

In Memory of Robert W. Sabate'

---continued on page 34---

Precise Data.

"Click"

Unlock the Potential of Your Reservoir.

Today's reservoirs are more challenging than ever. To unlock their potential requires absolutely precise data. OMNI Laboratories has established higher standards, more thorough protocols, and meticulous quality control measures to ensure unsurpassed accuracy. Plus, we have assembled the finest scientists in the field to provide superior interpretation and analysis. When precise data is paramount, choose OMNI Laboratories.

At OMNI, We've Got the Answers.



13 LOCATIONS IN THE U.S., CANADA AND SOUTH AMERICA • HEADQUARTERS: HOUSTON, TX • 832-237-4000 • WWW.OMNILABS.COM



Shoreline Gas Inc.
www.shorelinegas.com
Full Service Natural Gas Marketing

ALBERT P. BROWN, P.G.

GEOPHYSICAL CONSULTANT

Texas Board Certified Licensed Professional Geoscientist

Interpretation
Depth Imaging/Signal Enhancement
(504) 561-8690 cell: (504) 296-8877
brownapl@bellsouth.net



Collarini Energy Staffing Inc.

**Full-Time and Temporary
 Exploration and Production Personnel**

Facilities · Drilling · Production · Reservoir Engineers
 Landmen · Geoscience · Information Technology
 Health and Safety · Management · Procurement
 Accounting · Administrative Support

Houston and New Orleans
 (832) 251-0553 · Fax (832) 251-0157
 www.collarini.com

Connecting the Industry's Experts



Collarini Associates

4200 South I-10 Service Road, Suite 230
 Metairie, Louisiana 70001
 (504) 887-7127
 (504) 887-7162

Reservoir Engineering
Oil & Gas Property Evaluation
3-D Seismic Interpretation
Integrated Field Studies

New Orleans ■ Houston
 www.collarini.com



625 E. Kaliste Saloom
 Lafayette, La 70508

18900 Greenspoint Dr, Suite 225-S,
 Houston, Tx 77060

www.stoneenergy.com



CIMAREX ENERGY CO.

GULF OF MEXICO REGION
GOM, SE La., N. La., MS, AL

1100 Poydras St.; Suite 1100

Keith Gourgues

New Orleans, Louisiana 70163

Region Manager

504-586-1815 / Fax 504-586-9035

(832) 242-6000 (O)
 (713) 917-0493 (O)

(504) 931-7506 (C)
 johnjurasin@jurasinoilgas.com

JURASIN OIL & GAS

9700 Richmond Ave., Suite # 124
 Houston, TX 77042-4821


JOHN M. JURASIN
 President

Cert. Pet. Geologist #4284
 Cert. Prof. Earth Scientist #1961

NORTHCOAST OIL COMPANY

610 E. Rutland St.
 Covington, LA 70433
(985) 898-3577
(985) 898-3585 FAX

Jack M. Thorson
Eric C. Broadbridge
J. Daryl Gambrell
Raymond W. Stephens

ANSYTHE Donald I. Andrews 504-887-3432 	D-O-R ENGINEERING, INC. 3-D and Geoscience Services 120 Oil Center Dr., Bldg. 12 P.O. Box 51707, Lafayette, LA 70505 Bus. (337) 233-2378 Fax (337) 233-2907
THE BOEBEL COMPANY Oil and Gas Investments 170 Broadway Street, Suite 321 New Orleans, LA 70118 (504) 866-4313	EDWARD B. PICOU, JR. Consulting Micropaleontologist - Retired 228 St. Charles Ave., Suite 1330 C New Orleans, LA 70130 Bus. (504) 529-5155 Res. (504) 282-3096
BOO-KER OIL & GAS CORP. Gray S. Parker 826 Union, Suite 300 New Orleans, LA 70112 Bus. (504) 581-2430 Fax (504) 566-4785	H. WARREN BELL Oil and Gas Exploration 2500 Tanglewilde, Suite 485 Houston, TX 77063-2126 Bus (713) 266-7297 Fax (713) 266-7298
C & R EXPLORATION, INC. Carlo C. Christina Lawrence G. Ringham	PHELPS GEOSCIENCE Onshore Gulf of Mexico Geology and Geophysics Prospect Generation and Evaluation Houston, TX jsfphelps@yahoo.com (281) 398-5208
C. R. RONDEAU Petroleum Geologist 119 W Southland Ave. Ironwood, MI 49938 Res. (906) 932-4692	RAFIDI OIL AND GAS, INC. Jaser N. Rafidi, President 4415 Shore Dr., Suite 202 Metairie, LA 70006 Bus. (504) 722-2942 Fax (504) 888-5539; Res. (504) 888-1661
CLASSEN EXPLORATION, INC. James S. Classen Looking for close in deals P.O. Box 140637 Boise, ID 83714 classenllc@msn.com Bus. (208) 854-1037 Fax (208) 854-1029	ROY C. WALTHER Petroleum Geologist 2421 Prancer Street New Orleans, LA 70131 Bus. (504) 392-8513 Res. (504) 392-9332
COLLES C. STOWELL Oil and Gas Consultant 22 Sea St. Manchester, MA 01944 (978) 526-1286	TONY CAROLLO Consulting Geologist Unitization Geosteering Field Studies 1701 Peach Street Metairie, LA 70001 Bus. (504) 885-0004 Res. (504) 885-6829

Memorial Fund donations, continued from page 31:

Richard G. Klibert
John C. Kucewicz, Jr.
Russell J. Landry
In Memory of Ken Savage
John C. Langford
In Memory of Robert W. Sabate'
William J. Malin
Jeannie F. Mallick
George M. Markey, Jr.
Catherine D. McRae
Casey R. Mobley
David C. Mount
Robert G. Murphy
New Orleans Geological Auxiliary
In Memory of Mary Kirk Barrell
Russell H. Nordwell
Richard A. Olsen
In Memory of Richard W. Boebel
In Memory of Robert W. Sabate'
William S. Peirce
Edward B. Picou Jr.
In Memory of Richard W. Boebel
In Memory of Robey H. Clark
In Memory of Brian J. O'Neill
Jaser N. Rafidi
Brenda E. Reilly
Edmund L. Russell
In Memory of Francis X. Bland
George W. Schneider, Jr.
In Memory of William B. Rodan

George D. Severson
Robert C. Shoup
Monte C. Shalett
Rudolph B. Siegert
In Memory of Richard W. Boebel
In Memory of Robert W. Sabate'
Daniel L. Smith
Dr. J. O. Snowden
Dave Sollenberger
In Memory of Des Utterback
Raymond O. Steinhoff
In Memory of Robert S. Wood
In Memory of Harold E. Voke
Stephen Szydluk
Patrick F. Taylor Foundation
Employee Matching Gifts Program
Scott A. Wainwright
Roy C. Walther
Arthur S. Waterman
William M. Whiting
Whitney National Bank Officers and
Directors
In Memory of Richard W. Boebel
Louis E. Willhoit, Jr.
Armour C. Winslow
In Memory of Rita Menzel Winslow
Frances A. Wiseman
In Memory of Steve Widdicombe
Jimi Zotkiewicz



LaBay
Exploration Co., L.L.C.

111 Veterans Memorial Blvd.,
Suite 1550
Metairie, Louisiana 70005

www.labayexploration.com

Office (504) 371-5967
Fax (504) 371-5969

In Memory of Bill Craig

Robin A. Broussard
Chevron
M. R. "Bob" Douglass
Bernard L. Hill, Jr.
Jeff Jandegian
John C. Scheldt
Candace V. Strahan
In Memory of James Strahan

PGS. Clearly Better.

Crystal continues...

Wide Azimuth Multi-Client 3D

- » 580 deepwater Gulf of Mexico blocks
- » Ramform technology and efficiency advantages
- » Proven portfolio of Wide Azimuth data processing technologies
 - » Full Azimuth Tomography
 - » 3DSRME
 - » Pre-stack Depth Migration
 - » Kirchhoff
 - » WEM
 - » Beam
 - » RTM

Osl
Tel: 47-67-52-6400
Fax: 47-67-52-6464

London
Tel: 44-1932-260-001
Fax: 44-1932-266-465

Houston
Tel: 1-281-509-8000
Fax: 1-281-509-8500

Singapore
Tel: 65-6735-6411
Fax: 65-6735-6413

A Clearer Image
www.pgs.com



SEE YOUR DATA IN A WHOLE NEW LIGHT!

Take the pressure out of exploration
and drilling by seeing what you
are going to encounter.



eSeis

www.e-seis.com
713.531.1447

- Lithology & Fluids
- Depositional Facies
- Pore Pressure from V & Q
- Well Planning Consultation

MARINE PROPERTIES, LLC BERKSHIRE EXPLORATION CO.

MONTE C. SHALETT, CPL, PRESIDENT

3030 Lausat Street
Metairie, LA 70001-5924

BUS. (504) 831-7779
FAX. (504) 831-8315

PCI

Paleo Control, Inc.

Houston, Texas
713-849-0044

Drilling Wells, Studies and Data Base

Loyd Tuttle

Frio, SE Texas

Bob Liska

Wilcox, S and SE Texas

Jim Thorpe

Miocene and Cam-Miogyp



WWW.NOGS.ORG

NEW ORLEANS GEOLOGICAL SOCIETY



810 Union Street, Suite 300
New Orleans, LA 70112-1430

DATED MATERIAL