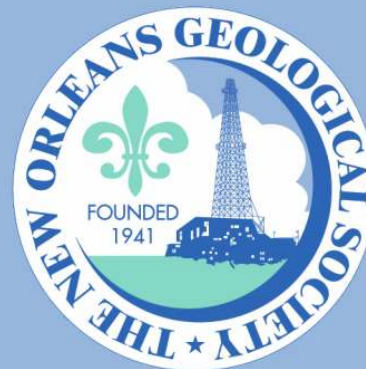


NOGS LOG



October 2008

Volume 49, Number 4

Upcoming Events and Activities

October 5-9 - GSA and GCAGS Joint Annual Meeting

In Houston. Go to www.geosociety.org for details.

October 13 - NOGS Luncheon - Rescheduled from September

*** At the Holiday Inn Downtown Superdome ***

Free validated parking in hotel garage

William R. Finley, Independent Geologist, will present

“Creole - Geology breaths new life into 1st Gulf of Mexico Oil Field.”

(See the September 2008 *LOG* or the NOGS website for Abstract and Biography)

HOLIDAY INN DOWNTOWN SUPERDOME

ADMISSION:

Check with concierge or

front desk for location

Lunch served at 11:30am

with reservation \$30.00

without reservation \$35.00

Student Member with reservation Free

October 18 - NOGS Fall Field Trip

“The Baton Rouge Fault.” See page 7 for announcement.

November 8 - Super Volunteer Day

9:00am-Noon at City Park. See page 12 for announcement.

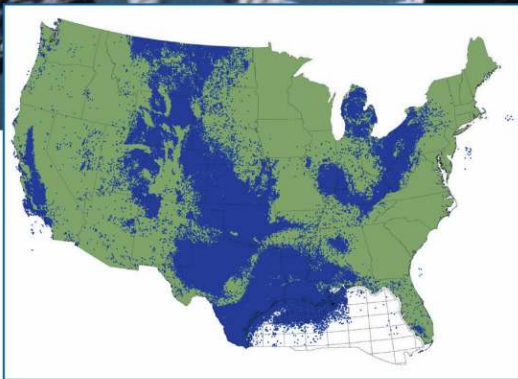
November 10 - NOGS Luncheon

Guest speaker and topic not available at time of press.

Please check the NOGS website for updates.

Introducing

LASSO



Lasso up all the digital LAS well log data you need from the industry's largest collection

With LASSO, lock in TGS' program rates on digital LAS well data from our US collection, growing at an unprecedented pace to more than 500,000 wells over the next several months. LASSO strengthens your exploration projects with the higher-order capabilities of increased digital well log use. LASSO digital data from TGS, the industry's well log data leader, is quality controlled and available online for immediate downloads.

For more information about LASSO, contact your TGS account representative or call 1- (888) LOG-LINE.



Geophysical
Products



Geological
Products



Imaging
Services

www.tgsnopec.com

NORWAY +47 66 76 99 00 | USA +1 713 860 2100 | UK +44 (0) 1234 272122 | AUSTRALIA +61 8 9480 0000

© TGS-NOPEC Geophysical Company. All rights reserved.

NOGS Office

Office Manager: Annette Hudson
Office Hours: 8:30am – 3:30pm on Monday-Wednesday-Friday
Tel: 504-561-8980 □ Fax: 504-561-8988
E-mail: info@nogs.org □ Website: www.nogs.org
The office is located at Suite 300, 810 Union Street, New Orleans, LA 70112.
Correspondence and all luncheon reservations should be sent to the above address.
Sent to press on October 3, 2008.



BOARD OF DIRECTORS

| | | Company | Phone | E-mail |
|-----------------|---------------------|-------------------------|--------------|------------------------------|
| President | William M. Whiting | Consultant | 504-947-8495 | bootscon@aol.com |
| Vice President | Allan Melillo | Chevron | 985-773-6756 | ajme@chevron.com |
| Secretary | Frances Wiseman | MMS | 504-736-2912 | frances.wiseman@mms.gov |
| Treasurer | James Swaney | MMS | 504-736-2677 | james.swaney@mms.gov |
| President-Elect | Tom Klekamp | Amber Resources LLC | 985-845-4046 | klekamp@bellsouth.net |
| Editor | Michael D. Miner | UNO | 504-280-3866 | mminer@uno.edu |
| Director 2009 | Willis E. Conatser | | 504-469-2496 | weconatser@aol.com |
| Director 2010 | Michael M. Ledet | | 504-394-9636 | mikeledet@cox.net |
| Director 2011 | Scott A. Wainwright | Bret Exploration Co Inc | 504-889-2700 | scott_wainwright@hotmail.com |

COMMITTEE

| | Chairperson | | | |
|--------------------------|----------------------|------------------------------|--------------|------------------------------------|
| AAPG Delegates | Dave Balcer | Chevron | 985-773-6725 | dbalcer@Chevron.com |
| AAPG Student Chapter | Bobby Cosentino | Tulane University | 504-865-5198 | rcosentino@tulane.edu |
| AAPG Student Chapter | Bryan Rogers | UNO | 504-736-2772 | thgem@gmail.com |
| Advertising-Log | Jennifer Connolly | Shell | 504-728-6411 | jennifer.connolly@shell.com |
| Auditing | J. David Cope | Ankor Energy | 504-596-3672 | dcope@ankorenergy.com |
| Awards | Michael N. Fein | W & T Offshore | 504-831-4171 | mikef@wtoffshore.com |
| Ballot | James Swaney | MMS | 504-736-2677 | james.swaney@mms.gov |
| Best Paper | David E. Reiter | Energy Partners Ltd | 985-893-8072 | dreiter@eplweb.com |
| Continuing Education | TBA | | | |
| Employment Counseling | Paul J. Post | MMS | 504-736-2954 | paul.post@mms.gov |
| Entertainment | Tom Klekamp | Amber Resources LLC | 985-845-4046 | klekamp@bellsouth.net |
| Environmental | Daisy Pate | Eustis Geotechnical Eng. | 504-613-5798 | dpate@eustiseng.com |
| External Affairs | Michael A. Fogarty | Sylvan Energy, LLC | 603-523-4808 | mike.a.fogarty@gmail.com |
| Field Trip | David Garner | Shell | 504-728-6154 | David.Garner@shell.com |
| Finance and Investment | James Swaney | MMS | 504-736-2677 | james.swaney@mms.gov |
| Historical | Edward B. Picou, Jr. | Consultant | 504-529-5155 | epicou@bellsouth.net |
| Membership/Directory | Penne Rappold | Shell | 504-728-4338 | prappold@gmail.com |
| New Geoscientists (NGNO) | TBA | | | |
| Nominating | Alfred H. Baker, Jr. | Beacon Exploration, LLC | 504-836-2710 | abaker1006@aol.com |
| Non-Technical Education | Duncan Goldthwaite | Consultant | 504-887-4377 | DGldthwt@aol.com |
| Office Operations | Arthur H. Johnson | Hydrate Energy International | 504-464-6208 | artjohnson51@hotmail.com |
| Publications Sales | Edward B. Picou, Jr. | Consultant | 504-529-5155 | epicou@bellsouth.net |
| Photography | J. David Cope | Taylor Energy Co LLC | 504-589-0419 | dcope@taylorenergy.com |
| School Outreach | Thomas C. Bergeon | Century Exploration | 504-832-3772 | Tom.bergeon@centuryx.com |
| Scouting | Carol Rooney | Consultant Geologist | 504-835-1909 | carolbrooney@aol.com |
| Technical Projects | TBA | | | |
| Ad Hoc Committee on | | | | |
| University Support | Michael J. Gallagher | Eni Petroleum | 504-593-7480 | Michael.Gallagher@enipetroleum.com |

NOGS LOG STAFF

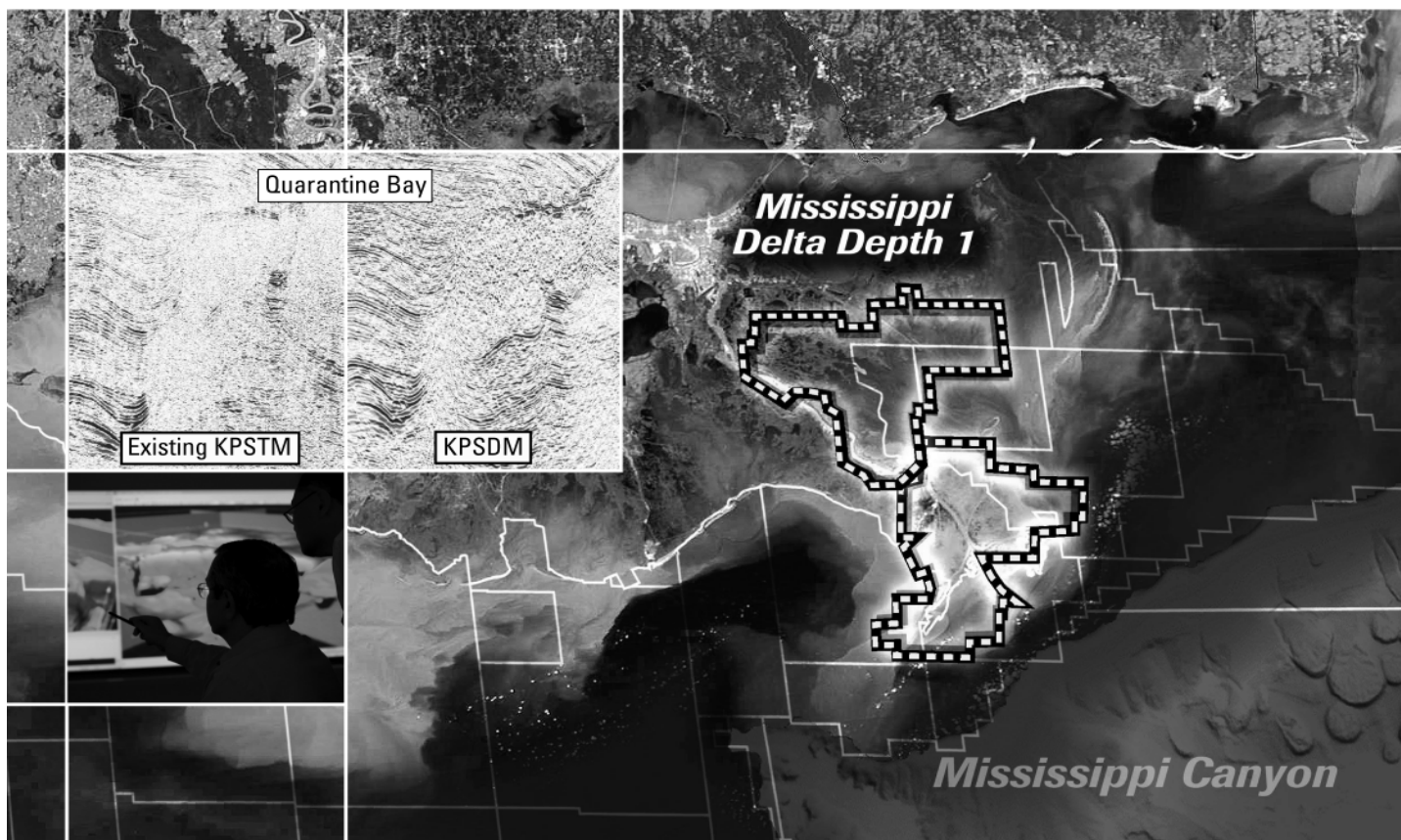
| Editor | Michael D. Miner | UNO | 504-280-3866 | mminer@uno.edu |
|--------------|----------------------|--------------|--------------|---------------------------------------|
| Editor-Elect | Clare Falcon | Schlumberger | 504-592-5385 | cfalcon2@new-orleans.oilfield.slb.com |
| Auxiliary | Susie Baker | NOGA | 504-466-4483 | abaker1006@aol.com |
| Info Tidbits | Clare Falcon | Schlumberger | 504-592-5385 | cfalcon2@new-orleans.oilfield.slb.com |
| Drill Bits | Paul J. Post | MMS | 504-736-2954 | paul.post@mms.gov |
| Webmaster | Jannette Sturm-Mexic | | | webmaster@nogs.org |

NOGS AUXILIARY

| Officers | | Phone | Directors | Year | Phone |
|--------------------|-----------------|--------------|-------------------|---------|--------------|
| President | Linda Peirce | 504-393-7365 | Ruth Ingram | 2008-09 | 504-887-5404 |
| 1st Vice-President | Jean Jones | 504-738-8091 | June Perret | 2008-09 | 504-881-9357 |
| 2nd Vice-President | Beverly Kastler | 504-286-0897 | Joan Sylvester | 2008-09 | 504-738-2934 |
| Secretary | Dolores Murphy | 504-393-0878 | Beverly Christina | 2009-10 | 504-835-2383 |
| Treasurer | Judy Lemarie' | 504-393-8659 | Peggy Rogers | 2009-10 | 504-392-6323 |
| Parliamentarian | June Perret | 504-881-9357 | Judy Sabate' | 2009-10 | 504-861-3179 |
| Member-at-Large | Susie Baker | 504-466-4483 | | | |

--- NOGS Contact List continued on page 10 ---

Expand your opportunities . . .



Announcing Mississippi Delta - *Depth 1*, current depth image reprocessing now in progress.

Multiclient^E

Experience the industry-leading benefits of WesternGeco state-of-the-art processing, designed to eliminate fault shadows and enhance deep imaging.

Delivering anisotropic Kirchhoff volumes:

- Processing and remigration of twelve legacy surveys covering 1,855 square miles.
- High-quality time imaging using relative amplitude anisotropic prestack time migration followed by improved structural imaging utilizing anisotropic prestack depth migration.

Excellence in technology – Experienced professionals.

To learn more about our Multiclient products, call +1 713 689 1000.

Multiclient to the Power of E

www.slb.com/westerngeco



© 2008 Schlumberger



from the President

Today is September 1 and I am writing the first part of this month's President's Letter from the 7th floor of the Holiday Inn in Birmingham, Alabama. I'm waiting to get back to New Orleans while on return route from Michigan along with plenty of Gustav evacuees from Louisiana. At least the view of the lower Ridge and Valley Province from my room is rewarding. On my trek to Michigan I visited three "Sacred" family sites in the Tuscarawas Valley, Ohio. I was surprised to find them on an insert on page 28 of the September "Explorer".

NOGS was host for the August 12th PTTC seminar. Dr. Earnest Mancini gave an excellent presentation on "Sequence Stratigraphy and Its Application to Petroleum Exploration in Onshore Mesozoic Salt Basins, Gulf Coastal Plain". Thanks to Art, Dr. Goddard, and Annette and special thanks to Shell Oil for the use of their auditorium. This event could have been better attended, especially with possible applications to understanding deepwater eastern Gulf stratigraphy.

On August 16th NOGS had five displays for "FETCH" at the New Orleans Children's Museum. This event was sponsored by PIPE (Petroleum Industry Promoting Education) under the auspices of API's Delta Chapter. Thanks to Art and Tom for the use of their materials. Other volunteers included Mike Fein and Dave and Darby Reiter. There was an excellent turnout of children and parents. Several parents were "home schooling" and were impressed by the "Tapestry of Time and Terrain" map as well as the other geological displays.

Being a volunteer is a rewarding way to spend part of your weekend. An important opportunity to help your Society and profession will be coming up in the form of the AAPG 2010 Convention here in New Orleans. Tom Hudson is organizing his committees

and can use your support now, also contact Art Johnson for the EMD.

A lot of effort is going into the October 18th Field Trip. This trip promises to be well-organized and informative. Get your reservations in early and if you would like to nominate a K-12 Earth Science Teacher to attend, please do so soon. Our appreciation to Kathy Haggard, Tom Klekamp, Woody Gagliano, Dick McCollough, Clare Falcon and others.

The new budget has been approved. Membership renewals are running a little behind so get those forms into the NOGS Office. We have been averaging a little over 500 members during the last few years. According to the 1972 Directory we had over 1200 members:

| | |
|------------------|-----|
| Consultants----- | 145 |
| Chevron ----- | 151 |
| Shell----- | 113 |
| Gulf----- | 44 |
| Texaco----- | 100 |
| Mobil----- | 54 |
| Exxon----- | 94 |
| Amoco----- | 79 |

Given what has happened to the hydrocarbon industry here, we are doing quite well.

We can save NOGS nearly \$1700 by not using credit cards to pay registration and by getting your LOG on the web-site as opposed to first class mailings.

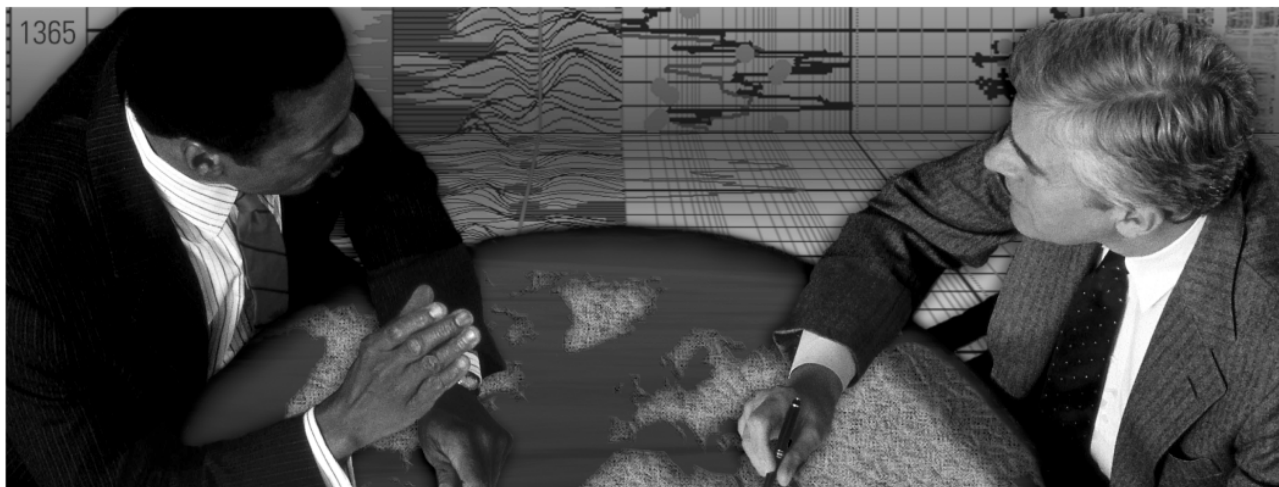
With regrets, our September 8th meeting was cancelled. The September luncheon talk and scholarship recognitions will be moved to the October luncheon. Just as we did for post-Katrina scholarship recipients, the student's checks have been mailed to their universities.

Bill

energyinformation

Business solutions for
the oil & gas industry

Schlumberger formation evaluation solutions deliver the answers you need. Our extensive portfolio of services, leading-edge technology, and advanced conveyance options keep you in communication with your well throughout its life cycle.



With formation evaluation technologies from Schlumberger, you can make the best decisions for optimized performance in every well.

The formation evaluation one-stop shop

Whether you are logging in open hole or behind the casing, our broad selection of services ensures the best solution for acquiring formation evaluation data. Tools can be conveyed while drilling or on wireline or pipe. We offer many specialized evaluation capabilities, from density, neutron porosity, and resistivity to borehole imaging, nuclear magnetic resonance logging, borehole seismic, formation pressure testing, and fluid sampling. Advanced triple-combo logging options include the VISION* formation evaluation and imaging-while-drilling services. Coupled with Pulse* telemetry and surveying services, the VISION family provides real-time formation evaluation data and enables optimum well placement.

High-speed wireline measurements are recorded with the Platform Express* logging services. The SlimXtreme* platform is designed for high-pressure, high-temperature environments and the ABC* Analysis Behind Casing services are used after casing is set.

Expert interpretation from the engineers and geoscientists of Schlumberger Data & Consulting Services brings all your data together to give you the answers you need. This expertise is available after logging is complete or as real-time two-way wellsite communication through the InterACT* real-time monitoring and data delivery system.

Schlumberger delivers leading-edge technology and interpretation expertise for all your formation evaluation needs, so every well benefits from the very best information.

For more information visit
www.slb.com/oilfield/formation_evaluation/

*Mark of Schlumberger

04-FE-114

Schlumberger

***NOGS Fall Field Trip –
October 18th 2008
The Baton Rouge Fault
... and its Friends
from New Orleans to Baton Rouge***

Ponchatoula NE SW DOQQ



Trip Date: October 18th 2008

Leaders: Woody Gagliano (Coastal

***Environments), Kathy Haggard (Riparian, Inc.), Rick McCulloch (LGS), and
Arville Touchet (Bayou Cajun Environmental)***

Time: 7:30a.m. depart UNO geology parking lot and return about 8:30p.m. the same day.

Cost: \$100 per person. Includes bus transportation, snacks/drinks, box lunch, dinner, and boat ride to Cypress Flats at Alligator Bayou in Prairieville.

***Reservations Required - Limited Seating - First Come Basis
30 NOGS Members/Guests/Spouses***

Contact Annette at NOGS Office ASAP to reserve your seat
at 504-561-8980 or fax 504-561-8988

(20 seats reserved for teachers and students sponsored through the generosity of members and friends of NOGS.)

What you'll see and hear on the road:

The Baton Rouge Fault and many of its friends are now easily identified in aerial photography, satellite imagery, and LIDAR elevation data. However, this trip provides an opportunity to see many faults at various locations along the north shore between Slidell and Baton Rouge up close. Since faults in southeast Louisiana are relatively subtle features, their zones of deformation tend to be important clues to their presence and activity. We'll see the signs and expressions of faults at various locations - Hwy 11 bridge, Goose Point, Maurepas vicinity, Livingston Parish Gum Swamp, through Baton Rouge streets, and Ascension Parish's Spanish Lake Basin. While we roll along the road we'll talk about the faults and their contributions in shaping Louisiana from the Jurassic to the present, how and where the ancient native Americans followed the Mississippi River (whose courses likely changed by fault movements), earthquakes and the seismically quiet mega slumps of listric faults, the plant communities that react to the gradual change in slope and subsidence of the land, and the urban impact of geo-hazards (a/k/a faults) to levees, schools, and infrastructure. We'll have dinner at Alligator Bayou and travel on the Alligator Queen to see Cypress Flats, a fault lake within the Spanish Lake Basin.

This trip will provide teachers and students with a chance to see the landscape of Louisiana through the eyes of geologists. Another great benefit to this trip will be to meet, and perhaps to mentor, a teacher or a student who is interested in geology.

We offer a special thanks to all who sponsored the teachers and students who will join us in seeing "The Baton Rouge Fault and its Friends."



Answering the Challenges of Production from Deep-Water Reservoirs:

Analogues and Case Histories to Aid a new Generation

December 7-9, 2008

Marriott Westchase: Houston, TX

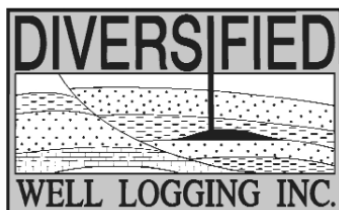
Information and registration are available
At our web site:

www.gcssepm.org



Relax. We'll keep you posted.

Your rig is offshore and you are not. How do you know what's going on so many miles away? You know because we tell you. Daily or even hourly, Diversified Well Logging's engineers update you on the status of your rig. We are your eyes and ears, especially when it comes to deep water or high pressure, high temperature areas. Diversified offers 24-hour surface evaluation. We provide secure and customized real-time data communication, in-house research and development and 24/7 on-call support for our equipment and our engineers. Whether you have a 10-day job or 110-day job, we provide the specialized attention you require. So, relax. We're with you every step of the way.



Serving the Gulf Coast for over 40 years.

New Orleans • Lafayette • Houston • Dallas • Corpus

800.280.2096

711 West 10th Street • Reserve, LA 70084 • Phone: 985.536.4143 • Fax: 985.536.2427
sales@dwl-usa.com



**PALEO
DATA**

**FULLY INTEGRATED AND
CENTRALIZED BIOSTRATIGRAPHIC
SERVICES**

- ▼ Single-source biostratigraphic databases
for increased accuracy and consistency
- ▼ Integrated foram / nannofossil analyses
- ▼ Complete wellsite paleo services
- ▼ In-house sample preparation
lab for quality-monitoring
and efficiency
- ▼ Sample pick-up service

6619 Fleur de Lis Drive
New Orleans, LA 70124
(504) 488-3711

www.paleodata.com

MCMORAN EXPLORATION CO.



MCMORAN OIL & GAS

www.mcmoran.com

NYSE: MMR

16676 Northchase Dr.
Houston, TX 77060
(281) 539-7600
Fax: (281) 539-7655

1615 Poydras
New Orleans, LA 70112
(504) 582-4000
Fax: (504) 582-4155

110 Travis St., Suite 140
Lafayette, LA 70503
(337) 735-9150
Fax: (337) 735-9151

NOGS CONTACT LIST

--- continued from page 3 ---

MEMORIAL FOUNDATION

BOARD OF TRUSTEES

| | | Company | Phone | E-mail |
|-------------------|---------------------|------------------------------|--------------|---------------------------|
| 2008-09 Chairman | Arthur H. Johnson | Hydrate Energy International | 504-464-6208 | artjohnson51@hotmail.com |
| 2008-09 Secretary | William M. Whiting | Consultant | 504-947-8495 | bootscon@aol.com |
| 2008-09 Trustee | David E. Balcer | Chevron | 985-773-6725 | dbalcer@chevrontexaco.com |
| 2008-09 Trustee | George T. Froming | Consultant | 504-799-1918 | gtfroming@yahoo.com |
| 2009-10 Trustee | Michael C. Fauquier | | | |
| 2009-10 Trustee | J. David Cope | Ankor Energy | 504-596-3672 | dcope@ankorenergy.com |
| 2010-11 Trustee | Timothy J. Piwowar | Shell | 504-728-4066 | tim.piwowar@shell.com |
| 2010-11 Trustee | Michael N. Fein | W & T Offshore | 504-831-4171 | mikef@wtoffshore.com |

AAPG DELEGATES

Term Ends

| | | Company | Phone | E-mail |
|--------|----------------------|----------------------|--------------|----------------------------|
| 2009 | David E. Balcer | Chevron | 985-773-6725 | dbalcer@Chevron.com |
| 2009 | William Whiting | Consultant | 504-947-8495 | bootscon@aol.com |
| 2009a) | Nancye Dawers | Tulane University | 504-862-3200 | ndawers@tulane.edu |
| 2009a) | David Cooke | MMS | 504-736-2609 | david.cooke@mms.gov |
| 2011 | Tom Hudson | Chevron | 985-773-7163 | tom.hudson@chevron.com |
| 2011 | Edward B. Picou, Jr. | Consultant | 504-529-5155 | epicou@bellsouth.net |
| 2011a) | Brenda Reilly | Energy Partners Ltd. | 504-799-4811 | breilly@eplweb.com |
| 2011a) | Robert Rooney | Century Exploration | 504-832-3777 | Robert.rooney@centuryx.com |

New NOGS
Members
August 2008

Corine K. Armstrong
LSU-Student
Dept of Geology & Geophysics
E 235 Howe-Russell
Baton Rouge, LA 70803
225-354-6435

Aaron B. Bradley
U.S. Army Corps Of Engineers
Const. Manager/Engineer
P O Box 60267
New Orleans, LA 70160-0267
504-862-2439

REINSTATED

Roger B. Durham
Max H Durham & Assoc. Inc.
Geologist
44052 Easy St.
Hammond, LA 70403
504-429-8380

REINSTATED

Donald S. Tucker
Energy Partners
Sr. Asset Geoscientist
201 Saint Charles Ave.
New Orleans, LA 70170
504-799-4837

SEI®

Seismic Exchange, Inc.

**Strategic Speculative Surveys
Geophysical Data Marketing & Management**

Your
**Full Service
National
Seismic Data
Marketing Firm**

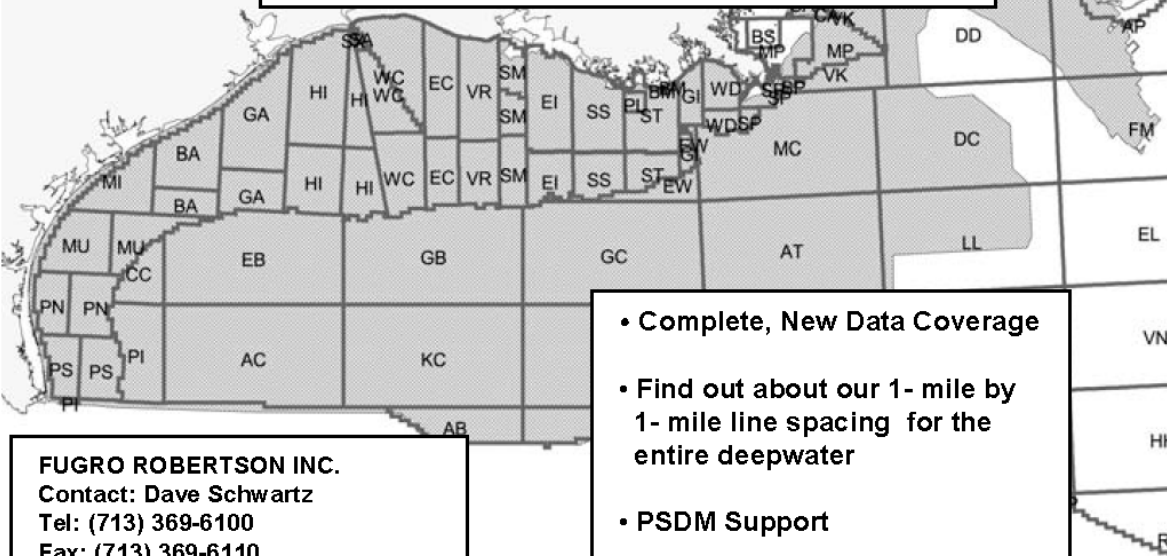
New Orleans
Dallas
Houston
Denver
Oklahoma City
Corpus Christi
Tulsa

201 St. Charles Avenue, Suite 4300, New Orleans, Louisiana 70170-4300
Telephone 504.581.7153 Fax 504.581.9591
www.seismicexchange.com

Robertson



**"The Place to Go"
For GOM Gravity Data and Interpretations**



FUGRO ROBERTSON INC.
Contact: Dave Schwartz
Tel: (713) 369-6100
Fax: (713) 369-6110
Email: infofri@fugro.com
www.fugro-lct.com

- Complete, New Data Coverage
- Find out about our 1- mile by 1- mile line spacing for the entire deepwater
- PSDM Support
- 3D Modeling



100 Northpark Blvd.
Covington, LA 70433

(985) 773-6000

"Serving the Oil & Gas Industry Since 1983"

Geological,
Geophysical &
Land Drafting

Anthony Catalanotto

President

Stefani Kelone

Drafting and Design



Geo-Draft, Inc.

A Professional Drafting & Graphics Firm

3349 Ridgelake Drive □ Suite 202 □ Metairie, LA □ 70002

Office: (504) 836-2882 Fax: (504) 836-2877

geodraft@bellsouth.net

CLK ENERGY, LLC

Oil & Gas Exploration and Production

1615 Poydras Street
Suite 1300
New Orleans, LA 70112

(504) 529-6100
(504) 596-2021
[Fax]
www.clkenergy.com

SAI

Sydboten & Associates, Inc.

*Geological and Geophysical Consulting,
3-D Seismic Interpretation
For Oil & Gas Exploration*

Ben D. Sydboten, Jr., CPG

124 Heymann Blvd., Suite 202
Lafayette, LA 70503

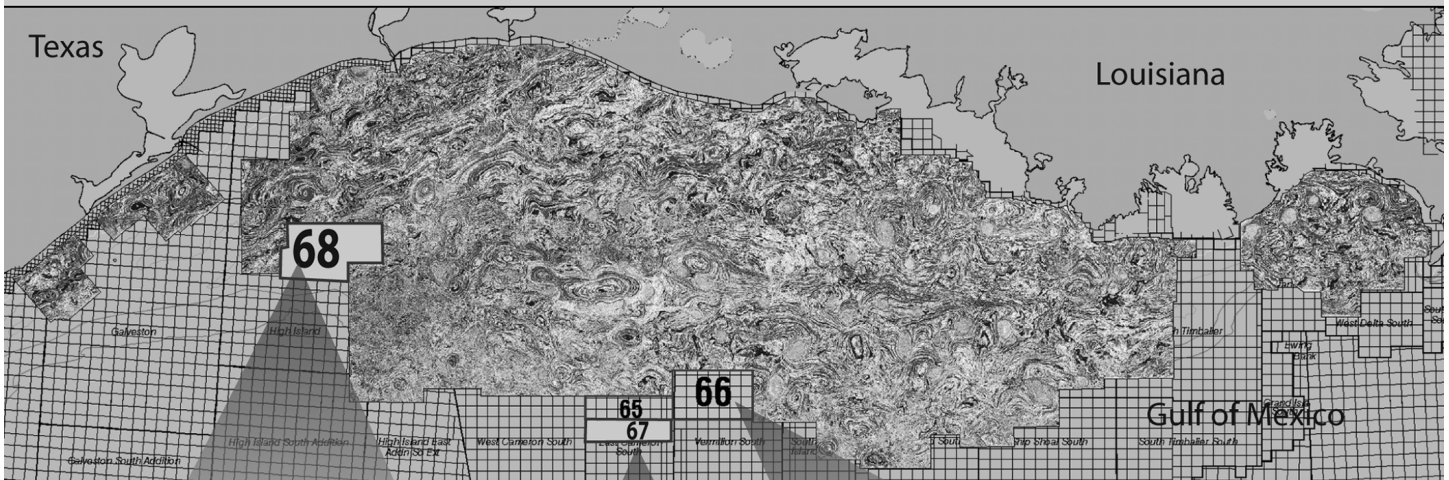
Office (337) 234-5288
Cell (337) 234-5491

November 8 – Super Volunteer Day 9:00am-Noon at City Park

Volunteers are invited to meet in front of Storyland at 9:00 a.m. Work assignments and tools will be handed out at that time. Last year NOGS installed the lighting for Celebration in the Oaks. This year work may include pruning, raking, cutting grass, picking up trash, and planting. Please dress appropriately for the season and bring your own garden gloves, sunscreen, and insect repellent, along with any food and drink you wish to consume. Since we don't know how many volunteers will show up each week, please bring yard tools if you have them. No chainsaws!



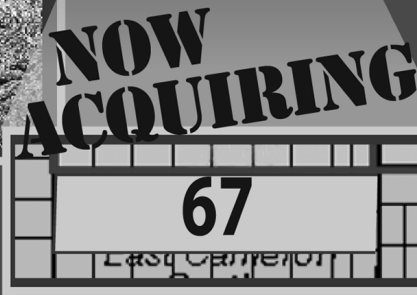
By the time you read this ad, this map will be out of date.



Because our crews are acquiring data every day, all day
to expand Fairfield's 3D data base.



**High Island (68) &
E. Cameron S. (67)**
30,000' offsets,
11 second records
processed in mid 2008



**E. Cameron South (65) &
Vermilion South (66)**
30,000' offsets, 11 second records
processed in January 2008

Visit www.fairfield.com to view Fairfield's multi-client coverage of 3D GOM data.



FAIRFIELD
INDUSTRIES

Houston 281/275-7500
New Orleans 504/525-6400

Proud to be
an American
company



2008 Joint Annual Meeting

Celebrating the International Year of Planet Earth

5 - 9 October 2008 | Houston, Texas, USA | George R. Brown Convention Center

Registration is now open for GCAGS/GCSSEPM 2008

Register as a GCAGS member to receive a free copy of the GCAGS Transactions.

Consider these numbers:

More than 5,500 poster and oral papers... 10 overarching plenary sessions on the most important topics impacting our sciences today, featuring top leaders in our fields... a full schedule with over 450 sessions of programming for five different societies... Sound intriguing?

How about: 33 field trips, scheduled before, during, and after the meeting... 7 tours in and around Houston... 38 short courses/workshops on diverse and relevant topics... more than 300 exhibitors with over 450 exhibit booths displaying and demonstrating the latest technology and research applications... Want more?

Think about nearly 10,000 scientists and students coming together in an unprecedented joint technical program featuring papers from all geological disciplines and the soil, agronomic, and crop sciences. This should prove to be the largest gathering of geoscientists this year

This adds up to one singular opportunity for you.

Come to Houston, Texas, 5-9 October 2008, to celebrate the International Year of Planet Earth. Professionals, students, and media from all over the world will find useful and valuable information at this unprecedented Joint Annual Meeting, held at the George R. Brown Convention Center in Houston, Texas, USA.

The Gulf Coast Association of Geological Societies with the Gulf Coast Section of SEPM, the Geological Society of America, the Soil Science Society of America, the American Society of Agronomy, and the Crop Science Society of America have joined together to highlight and stimulate discussions in areas of common interest across the diversity of disciplines and organizations represented by our members. Areas of mutual interest include energy, water resources, education, and earth systems, to name a few. The meeting is hosted by the Houston Geological Society.

The GCAGS president's reception has been expanded this year and it is a ticketed event to get a good head count. However, the cost is modest and the benefits are great.

Important Links found on <https://www.acsmeetings.org/>:

Online Meeting Registration
Online Housing Form
Joint Events
Field Trips
Tours
Houston Information
International Travel


Important Dates & Deadlines


Early Bird Registration
closes 14 July 2008


Standard Registration
closes 2 September 2008

Childcare Registration
closes 5 September 2008

A Company that Shines

 Geophysical Products

 Geological Products

 Imaging Services



TGS has been providing best-in-class multi-client data and services to successful E&P companies for over a quarter century. Our geophysical and geological data products are distributed around the globe and include one of the youngest and best targeted multi-client seismic libraries, extensive magnetic and gravity data, the industry's largest global database of digital well logs, and regional interpretive products. We also provide high-end depth imaging services to help resolve complex seismic imaging problems. Together, our products and services give you a more complete picture of the subsurface to help your exploration program *shine*.

For more information, visit www.tgsnopec.com today.



www.tgsnopec.com

NORWAY +47 66 76 99 00 | USA +1 713 860 2100 | UK +44 (0) 1234 272122 | AUSTRALIA +61 8 9480 0000 | RUSSIA +7 495 959 8117
©TGS-NOPEC Geophysical Company. All Rights Reserved.

2007-2008 NOGS Memorial Foundation Scholarships

GRADUATE

Lee H. Meltzer Memorial

\$3,000 Cash Award

LSU- Kyle Michael Metz

Kyle Metz grew up in Round Rock, Texas, where the technology industry was booming. Due to the tech industry's influence on the area, his father and nearly everyone's father he knew were electrical engineers. By growing up surrounded by engineers and attending a top-ranked school, he graduated from high school with a strong math and science background. When applying for college, he decided to enter Texas Tech University to pursue an engineering degree because he knew it was something he liked and that he could easily find employment after graduation. During his first semester at Texas Tech, he took a Physical Geology class that sparked his interest, but it was not until the instructor presented his work that entailed structural mapping of an ophiolite complex in Tierra del Fuego, Chile, that Kyle became excited about a career in geology.

James Allen Gilreath Memorial

\$3,000 Cash Award

Tulane - Kristen Butcher

Kristen Butcher is originally from Metairie, Louisiana and is currently a M.S. candidate at Tulane University. She received her B.S. in marine biology from the University of California, Santa Cruz where her studies focused on the ecology of rocky intertidal communities. Her current research interests are in the areas of coastal land loss and sea level rise. Kristen is presently working on her thesis, which investigates the impacts sea level rise may have on sulfur cycling within marsh substrate. She plans to graduate in May 2009 and pursue a career in coastal restoration.

Richard W. "Dick" Boebel Memorial

\$3,000 Cash Award

UNO- Sachidananda Mishra

Sachi was born and raised in Raghunathpur, India. In 2000 he completed his B.S. degree in Geology and graduated with distinction from Berhampur University in Orissa, India as the highest ranked honor student among all University honor students. In 2002 he graduated from Utkal University, Bhubaneswar, India, with a M.S. degree in Geology and in 2005 finished a M.S in Ocean Engineering from the Indian Institute of Technology (IIT) in Madras. He is currently a Ph.D. candidate at the University of New Orleans in the Department of Earth and Environmental Sciences. Sachi's research, under the direction of Dr. Deepak Mishra, is focused on combining remote sensing techniques to more fully document the development of hypoxia zones. His long term goal is to enter into academia as a professor where he intends to combine his love of teaching and research with his interests in geological processes.

2007-2008 NOGS Memorial Foundation Scholarships

SENIOR

Jules & Olga Braunstein Memorial

\$2,500 Cash Award

LSU - Matthew Clark

Matthew Clark is the son of Reino and Wendy Clark. Born in Oklahoma City, his family moved from Oklahoma to Texas and finally Louisiana where Matthew graduated from Fontainebleau High School in 2005. Matthew's father is a petroleum geologist, so he grew up surrounded by rocks and the great outdoors. He grew up hiking through the badlands of New Mexico but never considered actually studying geology until his first semester at Louisiana State University. Matthew has just finished his junior year at LSU, where he has done exceptionally well. Besides geology, he is also interested in coastal morphodynamics and anthropology. He enjoys fieldwork and attended field camp in Southern Utah during the summer of 2007. At field camp he worked with the Triassic Moenkopi Formation and mapped Sevier thrusting. Matthew is interested in shallow marine depositional systems and looks forward to attending graduate school.

Tulane - James A. Menking

Born and raised in Fort Worth, Texas, James Menking supposes that his affinity for the geological and environmental sciences was in part driven by a desire to discover the wonders of the lands that lie outside of the vast, flat tracts of central Texas. Having harbored a love for the outdoors through middle school, high school, and now college, it is hardly surprising that James has not looked back since discovering the field of geology at Tulane University. And, of course, what began as an outdoor-adventure-craved "testing of the waters" has turned into an incredibly rewarding academic endeavor. While his commitment and passion for academics have grown since beginning at Tulane, his views concerning the world and our purpose in it have similarly followed suit. He now finds himself resolved to use the geological sciences to benefit the world in some way. In addition to geology, he has a personal and academic interest in Latin American literature, culture, people, and studies in general. He hopes to be able to combine his interests in both geology and Latin American studies in his future work.

Tulane - Josie Nevitt

Josie grew up in Santa Cruz, California and developed an interest in geology during family and school camping trips in areas such as Mammoth, Yosemite, the Green River in Utah, and the Grand Canyon. She graduated from Aptos High School in 2005 and attended UC Davis for a quarter when Tulane closed its doors following Hurricane Katrina. In Fall 2007, Josie attended the University of Sydney and plans to graduate from Tulane in 2009.

UNO - Julie Torres

Julie Torres was born and raised in Kenner, Louisiana, where she attended Bonnabel High School and participated in numerous athletics and student organizations. After her high school graduation Julie decided to attend the University of New Orleans and was soon overwhelmed with the travel possibilities presented by the UNO involvement in the National Student Exchange program. Since enrolling at UNO Julie has spent two semesters studying geology at the University of Hawaii and a semester studying geology at Humboldt State University in Arcata, California. Julie has always loved science and the outdoors, and her travels to coastal universities while in the exchange program have reinforced her interests in coastal and marine geology. She is currently looking into graduate school opportunities and is intent on getting a Ph.D., hopefully from a university in Australia or New Zealand.

2007-2008 NOGS Memorial Foundation Scholarships

JUNIOR

Jules & Olga Braunstein Memorial

\$2,000 Cash Award

UNO - Kathryn Purifoy

Kathryn Purifoy was born in Oxford, England but moved to Monticello, Florida at the age of four. It was in this karst-rich region where she first learned some basic geologic principles because she and her sister were forbidden from exploring the local sinkholes. Kathryn graduated with an Associate in Arts degree from Tallahassee Community College in 2002. During a vacation to New Orleans she fell in love with the city and surroundings. She moved to New Orleans less than a year before the 2005 hurricanes and relocated with her son to Westwego after the storms. She is currently working toward a B.S. with a concentration in Coastal Science and Restoration from the Department of Earth and Environmental Sciences. Kathryn enjoys exploring the bayous of coastal Louisiana, weekend trips to the local fish markets and plans on applying her degree credentials toward maintaining and improving this beautifully historical city and the surrounding areas.

NOGS Memorial Foundation Scholarships

The NOGS Memorial Foundation Scholarships are granted each year to those students who have demonstrated exceptional talent in or commitment to their geologic studies and projects. It is the policy of the Memorial Foundation to posthumously name these scholarships after those members whose own extensive contributions to the profession have been particularly praiseworthy.

***Lee Hilliard Meltzer** for expertise in oil and gas appraisal and exploration, as well as manifold and unstinting support of and service to - from AAPG to NOGS - the region's professional geologic organizations.*

***James Allen "Al" Gilreath** for his work as chief tool developer of down-hole instrumentation and 'pattern' interpretation, earning him - world-wide - the title, 'Mr. Dipmeter'.*

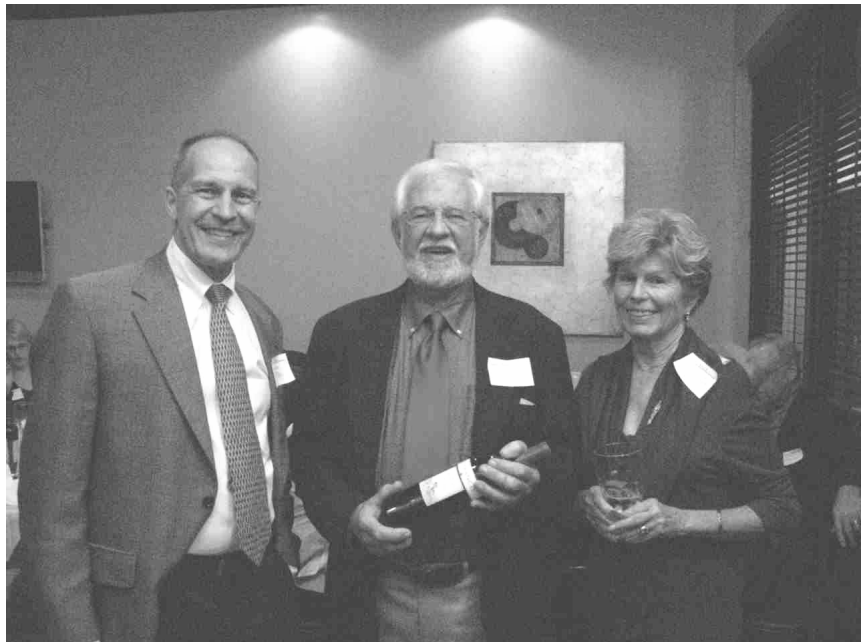
***Richard W. "Dick" Boebel** for his outstanding abilities as an oil and gas finder and in being a unique individual who was most generous of his time and talent to the industry, his peers, and in his support of many professional organizations .*

***Jules Braunstein** gained wide recognition in the oil and gas industry not only for exceptional technical expertise but also as an exacting editor. His long career was conspicuous for selfless devotion - and as carried on by his surviving wife, **Olga**, in her bequeathal of the residue of their estate to NOGS Memorial Foundation Scholarship Fund.*

NOGS Kick Off Party













American Association of Petroleum Geologists

An International Geological Organization

Dear HOD Delegates and Alternates:

You are no doubt aware that AAPG has an ongoing membership drive. Are we actively recruiting for AAPG? As leaders within the organization, we should all be actively recruiting!

The goal of the AAPG Recruitment, Reward and Recognition program is to build and strengthen our organization by increasing the Active membership and to recognize the members who work toward this achievement.

By inviting a colleague to join our professional community, we are helping to further the profession and the science, and therefore expanding the professional aspect of our lives.

It also helps the Association grow, which is a major player in creating and maintaining the reputation we enjoy as petroleum geoscientists. In addition, it also helps to keep our dues low.

Complete details of the program, as well as the list of current recruiters, are available on the AAPG website: <http://www.aapg.org/recruit/>. Applicants may join online or forms are available for download; remind applicants to list your name (as recruiter) on the appropriate form.

As leaders of AAPG, Delegates have the opportunity to lead by example; setting the standard for those who follow our direction and guidance in serving AAPG on a volunteer basis. As mentioned in the June issue of The Delegates' Voice, I would like to help AAPG's Recruitment, Reward and Recognition program and continue the grass-roots membership initiative within the House of Delegates, started by Marty Hewitt, past Chair. The concept is to assign a point Delegate in each local society who will act as a local membership ambassador with the prime responsibility of promoting AAPG membership at local society events. The Delegate will also be a conduit for providing sponsor names and streamlining the membership process. Numerous studies have shown that one-on-one contact is the most successful form of recruitment and Delegates are ideally positioned to carry out this function for AAPG. Please remember that one of the main reasons people don't participate is that no one asks them to do so.

I encourage you to discuss this membership initiative within your delegation, identify a membership ambassador for your delegation and recruit at least one new member for each Delegate by June 30, 2009. Offer a challenge within your delegation or challenge other societies to see who can/will recruit the most. It's a win-win situation for all involved.

Please contact me or Chair-Elect Steve Sonnenberg with your ideas. Together we all can build a better AAPG - one member at a time.

Sincerely,

George R. Bole
Chairman, House of Delegates

GB/vb

South Louisiana and Offshore Exploration and Production Activity

- Western Gulf of Mexico Oil and Gas Lease Sale 207 was held in New Orleans on 20 August by the U.S. Department of the Interior's Minerals Management Service (MMS). The sale attracted \$487,297,676 in high bids from 53 participating companies. MMS received 423 bids on 319 tracts. The sum of all bids received totaled \$607,134,968. The sale offered 3,412 tracts comprising approximately 18 million acres offshore Texas.

Comparisons between Sale 207 and Sale 204 in 2007 are shown below.

| | <u>Sale 207</u> | <u>Sale 204</u> | <u>% Difference</u> |
|-------------------------|-----------------|-----------------|---------------------|
| Tracts | 319 | 358 | (11) |
| Bids | 423 | 282 | 50 |
| High Bids (\$ MM) | 487 | 289 | 68 |
| Participating Companies | 53 | 47 | 13 |

MMS Preliminary Sale Statistics showed the following:

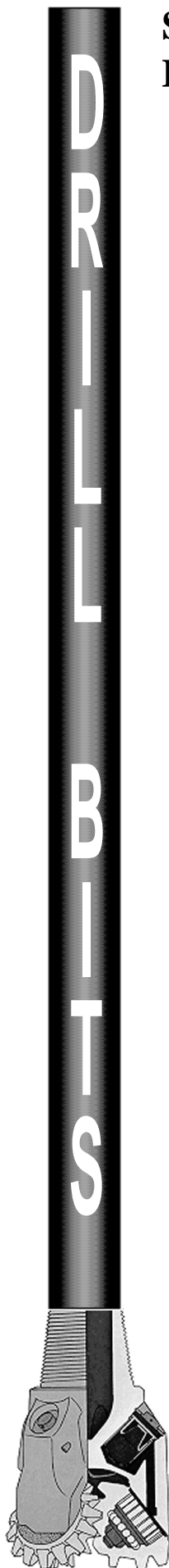
The top five companies submitting the highest dollar amount of high bids for Sale 207:

| Company | # High Bids Submitted | Sum High Bids Submitted (\$) |
|-----------------------------|------------------------------|-------------------------------------|
| ExxonMobil Corp. | 130 | 127,331,000 |
| Chevron USA, Inc. | 20 | 127,281,322 |
| Statoil Gulf of Mexico, LLC | 5 | 87,352,000 |
| LLOG Exploration, Inc. | 11 | 23,172,800 |
| Shell Gulf of Mexico, Inc. | 15 | 20,199,985 |

Comparing the two top bidders, Chevron exposed substantially more per tract (~\$6,364,066) than ExxonMobil (~\$979,469). Exxon appears to have been making more of a "play", while Chevron's bidding appears to have been prospect specific.

The top five companies submitting the highest number of high bids for Sale 207:

| Company | # High Bids Submitted | Sum High Bids Submitted (\$) |
|---------------------------------------|------------------------------|-------------------------------------|
| ExxonMobil Corp. | 130 | 127,331,000 |
| Hess Corp. | 22 | 14,162,407 |
| Chevron USA, Inc. | 20 | 127,281,322 |
| Devon Energy Production Company, L.P. | 20 | 6,671,461 |
| Anadarko E&P Co., LP | 19 | 14,806,839 |



Companies submitting the ten single highest bids in Sale 207:

| Company | Protraction/ Block | Sum of Total Bids Submitted (\$) |
|----------------------------|-----------------------|-------------------------------------|
| Statoil Gulf of Mexico LLC | AC / 380 | 61,110,000 |
| Chevron USA, Inc. | GB / 973 | 52,107,556 |
| Chevron USA, Inc. | GB / 972 | 34,607,556 |
| Statoil Gulf of Mexico LLC | AC / 424 | 22,332,000 |
| Chevron USA, Inc. | AC / 775 | 20,121,217 |
| Shell Gulf of Mexico, Inc. | AC / 771 | 11,999,999 |
| Eni Petroleum US, LLC | KC / 580 | 8,103,115 |
| LLOG Exploration, Inc. | HI / 169 | 8,012,000 |
| ConocoPhillips Co. | KC / 146 | 6,200,110 |
| LLOG Exploration, Inc. | HI / A 7 | 6,012,000 |

- **Golden Gate Petroleum** on 25 August advised that the Jumonville #1 at Bullseye Prospect, Iberville Parish, Louisiana, had on 21 August reached its revised MTD of 12,440 feet, which is estimated to be 80 feet below the base of the primary objective in the *Miogyp* sand. Because of high pressure conditions in the borehole from the *Miogyp* sands and surrounding shales, the decision was made to run and cement a production liner. This was completed on Saturday 23 August. Cased hole logs were to have been run 26 August. Work also continued on installing completion equipment in preparation for production testing the well.

Preliminary data from mud logging indicated a reservoir sand, estimated to be between 30 and 35 feet thick, was encountered in the *Miogyp* objective. This reservoir thickness is in line with pre-drilling expectations, and will hopefully be confirmed by logs.

During drilling operations significant amounts of light oil were observed in the mud pits and highly elevated gas readings were recorded. The general consensus is that the *Miogyp* reservoir is a predominantly oil reservoir with estimated bottom hole pressure of over 10,000 psi.

While preliminary, this information provides a strong indication of a commercial discovery. Further confirmation of sand thickness, BHP, flow rates and assessment of potential reserves will require data from logging and flow testing. The company and its partners remain cautious until a full evaluation can be completed. Golden Gate Petroleum Ltd (43.33% WI) is the operator of the Jumonville #1 well. Partners are Modena Resources Limited (15.00% WI), Pantheon Resources PLC (15.00% WI), Eastern Advisors (20.00% WI), and Nuenco (6.67% WI).

The Jumonville # 1 well targeted three objectives (*Camerina*, *Miogyp* and *Cib Haz*), with independent traps, defined by new, proprietary 3D seismic data. Total reserves for these objectives were initially estimated (P50) to be 12.5 million barrels of oil and 33 BCF of gas.

The areal extent of the *Miogyp* and *Cib Haz* reservoir sands were reportedly clearly delineated by seismic where thicker than 20 feet. The *Miogyp* and *Cib Haz* sands are high-quality reservoirs with porosity ranging from 24-30% and permeability of 300-1000 mD.

The initial location offsets a previously drilled well that demonstrated 50 feet of *Miogyp* sands on logs, but was not completed due to mechanical difficulties encountered in attempting to reach a deeper objective.

- **Paul Post**



Eni Petroleum

1250 Poydras Street
Suite 2000
New Orleans, LA 70113
Tel: (504) 593-7000
Fax: (504) 593-7745

1201 Louisiana Street
Suite 3500
Houston, TX 77002
Tel: (713) 393-6100
Fax: (713) 393-6205



**Shell has worked in partnership
with the NOGS for many years, and
is proud to count the society among
its closest business associates.**

The New Orleans Geological Society was organized in 1941 to foster scientific research and advance the science of geology. Particular emphasis is laid on the exploration for and production of petroleum and natural gas. Related objectives include encouraging the adoption of improved methods of exploration, disseminating pertinent geological and technological data, and maintaining a high standard of professional conduct among its members.

www.shell.com/us.sepc

BIG BANG BLAMED ON SOFTWARE UPGRADE! [Should Have Used KINGDOM®!]

**Avoid system-wide consequences
from upgrading your geoscience software.**

KINGDOM, from SMT, gives you the best in technology today without requiring that you abandon existing solutions. It's easy to use, coexists with your current software, and provides cutting edge, scaleable functionality - getting you productive quickly! In fact, 9 of 10 customers surveyed say KINGDOM is easier to use than the competition.

No wonder KINGDOM is the industry leader for PC-based interpretation. And our reputation is...expanding.



Visit our Web site at www.seismicmicro.com/smt-bigbang10 and learn why KINGDOM 8.2 is the market leader for PC-based interpretation with over 2,500 companies in 85 countries.



Intuitive. Integrated. Interpretation.

America +1 (713) 464-6188 **Asia** +65 6220 1089 **Europe** +44 (0) 20 8240 6524

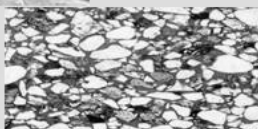
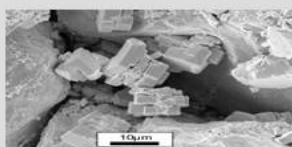
Complex Reservoir Evaluation?

Log Calibration SATURATION MODELING PVT Analysis
 Reservoir Performance FRACTURE DESIGN Sand Control
 Completion Design Flow Assurance Borehole Stability
 Reserve Estimates COMPREHENSIVE CORE ANALYSIS

Simple Solution: Rely on Experience!

Rely on Core Laboratories!

- Comprehensive core analysis laboratory and wellsite services
- Comprehensive reservoir fluid laboratory and sampling services



New Orleans: 504-733-6583

Lafayette: 337-837-8616

Houston: 713-328-2673

www.corelab.com

SURVIVOR™

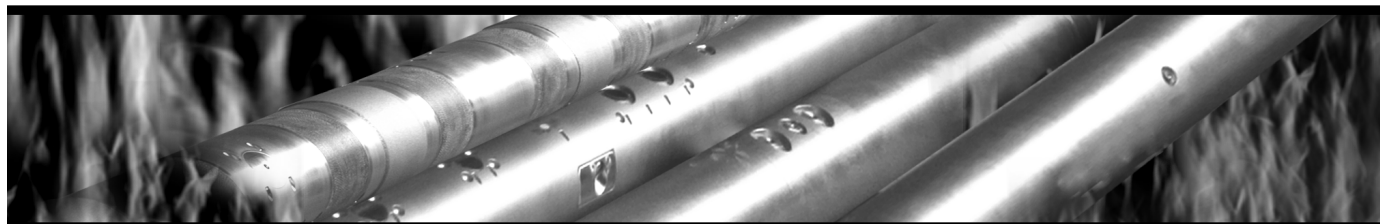
LOGGING-WHILE-DRILLING SUITE

The SURVIVOR™ Suite uses our highly reliable HDS-1 Directional Gamma Ray technology, Array Wave Resistivity tool, Slim Density Neutron Standoff Caliper tool and our Dynamic Pressure Module to create a complete system for logging in hostile drilling environments.

Temperature Rating.....350°F (175°C)

Pressure Rating25,000 psi

Logging Capacity300+ circulating hours



RELIABILITY. ACCURACY. VERSATILITY. WE DELIVER.

e-mail: pfmarketing@pathfinderlwd.com

www.pathfinderlwd.com

© 2006 Pathfinder Energy Services, Inc. All rights reserved.

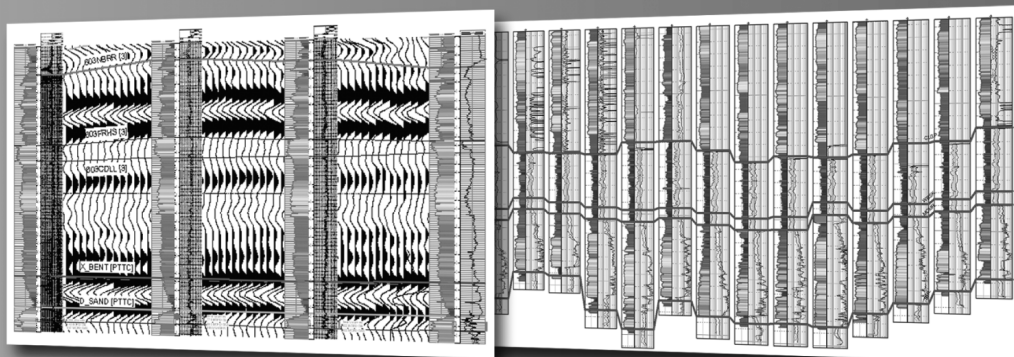
PATHFINDER®

Define your geological model faster than ever before

NO MORE WAITING! Available today from IHS, easy and affordable access to one of the largest U.S. digital log collections

- More than 185,000 LAS files with over 1.5 million curves
- Regional subscription packages for today's active play areas
- Indexed to IHS well and production data
- Linked to the IHS Enerdeg® Browser for quick regional studies and log selection
- Available via IHSLogNet.com or on DVD
- Ready to use in PETRA and other log packages

Request a free 2' x 3' IHS digital log coverage map at ihs.com/energy/DigitalLogs



Use PETRA® to integrate digital log, well, production, perf, seismic and tops data. IHS is the only company to provide you with the complete picture.



Why wait? Subscribe today! Call **888.OIL.DATA** (645.3282) or e-mail sales.energy@ihs.com

The Source
for Critical Information and Insight™

THE NEW ORLEANS GEOLOGICAL SOCIETY MEMORIAL FOUNDATION, INC.

The Memorial Foundation is an IRS Tax Exempt Code #501 (c)(3) organization. The Federal I.D. is: 72-1220999. Please consider making your donation prior to the close of this year's fiscal cycle which is September 30, 2009. Your individual support in any amount will help meet the IRS Guidelines for our Foundation. *Thanks!*

\$15,000 AND ABOVE

Olga Braunstein Succession

Gibbett Hill Foundation

In Memory of Steve & Marion Millendorf,

William J. Prutzman, Roger G. Vincent & Ron Youngblood

\$10,000

The Booth-Bricker Fund

In Memory of Richard W. Boebel

\$7,000 TO \$9,000

GCAGS Matching Funds

Paul C. Mc Williams

\$3,000 TO \$4,000

NOGS Golf Tournament May 2007

In Memory of Bill Craig

\$1,000

C & R Exploration, Inc.

In Memory of Richard W. Boebel

Thornton E. Anderson

In Memory of Richard W. Boebel

\$500

Carlo and Beverly Christina

In Memory of Richard W. Boebel

Joanne J. Clark and Family

In Memory of Richard W. Boebel

Joffre J. Crouere

In Memory of Richard W. Boebel

\$2,000

Bridwell Oil Company

In Memory of Richard W. Boebel

\$600

Richard W. Boebel

\$250 TO \$499

Carlo C. Christina

In memory of Robey H. Clark

In Memory of Al Gilreath

In memory of Allen R. Stern

Seismic Exchange, Inc.

In Memory of Richard W. Boebel

Carol and Gilbert St. Germain

In Memory of Richard W. Boebel

UP TO \$249

John Edward Allen, Jr.

Don and Carol Andrews

In Memory of Thomas H. Philpott

In Memory of William B. Rodan

Donald I. Andrews

In Memory of T. Wayne Campbell

Robert J. Ardell

In Memory of Robert W. Sabate'

Memory of Richard W. Boebel

In Memory of Francis X. Bland

Peggy and Robert Armstrong

In Memory of Richard W. Boebel

Edward C. Austin

In Memory of Charles L. Jones

Bruce Bahlinger

In Memory of Thomas H. Philpott

Al and Susie Baker

In Memory of Robert W. Sabate'

Jack R. Bantari

Abraham Biadgelgne

Maurice N. Birdwell

In Memory of Jim Davis

Cynthia A. Bradford

Eric C. Broadbridge

Hilary James Brook

Robin A. Broussard

In Memory of Charles L. Jones

In Memory of Thomas H. Philpott

Jack G. Bryant

Rob Burnett

Chevron

Matching Funds

Arthur F. Christensen

Ellen F. Clark

James S. Classen

In Memory of All Gilreath

Clarence F. Conrad

Willis E. Conatser, PhD

Charley and Trudy Corona

In Memory of Mary Kirk Barrell

Charley Corona

In Memory of Charles L. Jones

In Memory of McLain Forman

In Memory of Richard W. Boebel

Michael A. Danahy

Robert M. Danos

In Memory of Robert W. Sabate'

M. R. "Bob" Douglass

FONO FUND

The FONO Fund accepts contributions that are invested and the income dedicated to assure sufficient financial resources will always be available to maintain the NOGS business office. Contributors are reminded that donations to the FONO Fund are not covered by the IRS 501 (c)(3) tax exempt classification and should be reported as a business expense on your IRS tax report.

\$600

Richard W. Boebel

Willis E. Conatser

\$500

James A. Hartman

In Memory of Robert W. Boebel

In Memory of Robert W. Sabate'

UP TO \$249

Woods W. Allen, Jr.

Donald I. Andrews

Alfred H. Baker Jr.

Philip Beron, Jr.

Joseph E. Boudreaux

Cynthia A. Bradford

Eric C. Broadbridge

Hillary James Brook

Jack G. Bryant

In Memory of Shelby W. Smith

J. Sybil Calloway

Anthony Carollo Jr.

Arthur F. Christensen

James S. Classen

Richard P. Colomes

Clarence F. Conrad

Joffre J. Crouere

John Dombrowski

Merle J. Duplantis

Richard A. Edmund

Parrish N. Erwin, Jr.

Niles R. Faulk

Michael N. Fein

Laurens Gaarenstroom

Mark J. Gallagher

Arthur J. Garden

Duncan Goldthwaite

Peter G. Gray

Bernard L. Hill, Jr.

Owen R. Hopkins

Thomas A. Hudson

Kenneth Huffman

Paul Jurik

Tom Klekamp

Richard G. Klibert

William J. Malin

Jeannie F. Mallick

George M. Markey, Jr.

Louis L. McCormick

Robert H. Monahan

Robert G. Murphy

William J. O'Leary

Richard A. Olsen

Linda and Bill Peirce

Edward B. Picou, Jr.

In Memory of Robert W. Sabate'

Jaser N. Rafidi

James P. Raymond, Jr.

Brenda E. Reilly

C. R. Rondeau

Monte C. Shalett

Rudolf B. Siegert

Raymond Stephens

Stephen Szydluk

Scott A. Wainwright

Roy C. Walther

Arthur S. Waterman

Robert C. Weissmann

Louis E. Willhoit, Jr.

James W. Yeldell Jr.

Jim Zotkiewicz

CONTRIBUTIONS FOR BOTH FUNDS
THROUGH SEPTEMBER 18, 2008.
DONATIONS ARE LISTED FOR ONE YEAR.

Merle J. Duplantis

George H. Evans

Exxon Mobil Matching Funds

Michael N. Fein

Brent J. Foster

In Memory of Robert W. Sabate'

Laurens Gaarenstroom

Sherwood M. Gagliano

Mark J. Gallagher

David Garner

Peter G. Gray

Angela M. Hessler

Bernard L. Hill, Jr.

In Memory of Robert E. Osborne

Owen R. Hopkins

John H. Houser

Dan E. Hudson

Thomas A. Hudson

Kenneth Huffman

Thomas E. Johnson

Tom Klekamp

In Memory of Robert W. Sabate'

---continued on page 34---

Precise Data.

"Click"

Unlock the Potential of Your Reservoir.

Today's reservoirs are more challenging than ever. To unlock their potential requires absolutely precise data. OMNI Laboratories has established higher standards, more thorough protocols, and meticulous quality control measures to ensure unsurpassed accuracy. Plus, we have assembled the finest scientists in the field to provide superior interpretation and analysis. When precise data is paramount, choose OMNI Laboratories.

At OMNI, We've Got the Answers.



13 LOCATIONS IN THE U.S., CANADA AND SOUTH AMERICA • HEADQUARTERS: HOUSTON, TX • 832-237-4000 • WWW.OMNILABS.COM



Shoreline Gas Inc.
www.shorelinegas.com
Full Service Natural Gas Marketing

***This advertising space is
 available! Contact the
 NOGS office.***



Collarini Energy Staffing Inc.

**Full-Time and Temporary
 Exploration and Production Personnel**

Facilities · Drilling · Production · Reservoir Engineers
 Landmen · Geoscience · Information Technology
 Health and Safety · Management · Procurement
 Accounting · Administrative Support

Houston and New Orleans
 (832) 251-0553 · Fax (832) 251-0157
 www.collarini.com

Connecting the Industry's Experts



Collarini Associates

4200 South I-10 Service Road, Suite 230
 Metairie, Louisiana 70001
 (504) 887-7127
 (504) 887-7162

**Reservoir Engineering
 Oil & Gas Property Evaluation
 3-D Seismic Interpretation
 Integrated Field Studies**

New Orleans ■ Houston
 www.collarini.com



625 E. Kaliste Saloom
 Lafayette, La 70608

18900 Greenspoint Dr, Suite 225-S,
 Houston, Tx 77060

www.stoneenergy.com



**WOODSIDE
 WOODSIDE ENERGY
 (USA) INC.**

WWW.WOODSIDE.COM.AU

**71683 Riverside Dr.
 Covington, LA 70433
 Tel: (985) 249-5300
 Fax: (985) 249-5388**

**5151 San Felipe #1200
 Houston, TX 77056
 Tel: (713) 401-0000
 Fax: (713) 401-0088**

ATWATER CONSULTANTS, LTD.

REGISTERED AND CERTIFIED PETROLEUM PROFESSIONALS

**GEOLOGICAL, ENGINEERING, GEOPHYSICAL,
 TRAINING AND EXPERT WITNESS SERVICES**

**3525 Hessmer Ave, Ste 304
 Metairie LA 70002**

**Tel. (504) 581-6527
 Fax (504) 524-7798**



CIMAREX ENERGY CO.

**GULF OF MEXICO REGION
 GOM, SE La., N. La., MS, AL**

1100 Poydras St.; Suite 1100

Keith Gourgues

New Orleans, Louisiana 70163

Region Manager

504-586-1815 / Fax 504-586-9035

(832) 242-6000 (O)
 (713) 917-0493 (O)

(504) 931-7506 (C)
 johnjurasin@jurasinoilgas.com

NORTHCOAST OIL COMPANY

610 E. Rutland St.
 Covington, LA 70433
 (985) 898-3577
 (985) 898-3585 FAX


**Jack M. Thorson
 Eric C. Broadbridge
 J. Daryl Gambrell
 Raymond W. Stephens**

JURASIN OIL & GAS

9700 Richmond Ave., Suite # 124
 Houston, TX 77042-4821

JOHN M. JURASIN
 President

Cert. Pet. Geologist #4284
 Cert. Prof. Earth Scientist #1961

| | |
|--|--|
| <p>ANSYTHE Donald I. Andrews</p>  <p>504-887-3432</p> | <p>D-O-R ENGINEERING, INC. 3-D and Geoscience Services</p> <p>120 Oil Center Dr., Bldg. 12 P.O. Box 51707, Lafayette, LA 70505</p> <p>Bus. (337) 233-2378 Fax (337) 233-2907</p> |
| <p>THE BOEBEL COMPANY Oil and Gas Investments</p> <p>170 Broadway Street, Suite 321 New Orleans, LA 70118</p> <p>(504) 866-4313</p> | <p>EDWARD B. PICOU, JR. Consulting Micropaleontologist - Retired</p> <p>228 St. Charles Ave., Suite 1330 C New Orleans, LA 70130</p> <p>Bus. (504) 529-5155 Res. (504) 282-3096</p> |
| <p>BOO-KER OIL & GAS CORP. Gray S. Parker</p> <p>826 Union, Suite 300 New Orleans, LA 70112</p> <p>Bus. (504) 581-2430 Fax (504) 566-4785</p> | <p>H. WARREN BELL Oil and Gas Exploration</p> <p>2500 Tanglewilde, Suite 485 Houston, TX 77063-2126</p> <p>Bus (713) 266-7297 Fax (713) 266-7298</p> |
| <p>C & R EXPLORATION, INC.</p> <p>Carlo C. Christina Lawrence G. Ringham</p> | <p>PHELPS GEOSCIENCE Onshore Gulf of Mexico Geology and Geophysics Prospect Generation and Evaluation</p> <p>Houston, TX jsfphelps@yahoo.com (281) 398-5208</p> |
| <p>C. R. RONDEAU Petroleum Geologist</p> <p>119 W Southland Ave. Ironwood, MI 49938</p> <p>Res. (906) 932-4692</p> | <p>RAFIDI OIL AND GAS, INC. Jaser N. Rafidi, President</p> <p>4415 Shore Dr., Suite 202 Metairie, LA 70006</p> <p>Bus. (504) 722-2942 Fax (504) 888-5539; Res. (504) 888-1661</p> |
| <p>CLASSEN EXPLORATION, INC. James S. Classen Looking for close in deals</p> <p>P.O. Box 140637 Boise, ID 83714</p> <p>Bus. (208) 854-1037 Fax (208) 854-1029</p> <p>classenllc@msn.com</p> | <p>ROY C. WALTHER Petroleum Geologist</p> <p>2421 Prancer Street New Orleans, LA 70131</p> <p>Bus. (504) 392-8513 Res. (504) 392-9332</p> |
| <p>COLLES C. STOWELL Oil and Gas Consultant</p> <p>22 Sea St. Manchester, MA 01944</p> <p>(978) 526-1286</p> | <p>TONY CAROLLO Consulting Geologist Unitization Geosteering Field Studies</p> <p>1701 Peach Street Metairie, LA 70001</p> <p>Bus. (504) 885-0004 Res. (504) 885-6829</p> |

Memorial Fund donations, continued from page 31:

Richard G. Klibert
John C. Kucewicz, Jr.
Russell J. Landry
In Memory of Ken Savage
John C. Langford
In Memory of Robert W. Sabate'
William J. Malin
Jeannie F. Mallick
George M. Markey, Jr.
Catherine D. McRae
Casey R. Mobley
David C. Mount
Robert G. Murphy
New Orleans Geological Auxiliary
In Memory of Mary Kirk Barrell
Russell H. Nordwell
Richard A. Olsen
In Memory of Richard W. Boebel
In Memory of Robert W. Sabate'
William S. Peirce
Edward B. Picou Jr.
In Memory of Richard W. Boebel
In Memory of Robey H. Clark
In Memory of Dr. M. Gordon Frey
In Memory of Brian J. O'Neill
Jaser N. Rafidi
Brenda E. Reilly
Edmund L. Russell
In Memory of Francis X. Bland
George W. Schneider, Jr.
In Memory of William B. Rodan

George D. Severson
Robert C. Shoup
Monte C. Shalett
Rudolph B. Siegert
In Memory of Richard W. Boebel
In Memory of Robert W. Sabate'
Daniel L. Smith
Dr. J. O. Snowden
Dave Sollenberger
In Memory of Des Utterback
Raymond O. Steinhoff
In Memory of Robert S. Wood
In Memory of Harold E. Voke
Stephen Szydluk
Patrick F. Taylor Foundation
Employee Matching Gifts Program
Scott A. Wainwright
Roy C. Walther
Arthur S. Waterman
William M. Whiting
Whitney National Bank Officers and
Directors
In Memory of Richard W. Boebel
Louis E. Willhoit, Jr.
Armour C. Winslow
In Memory of Rita Menzel Winslow
Frances A. Wiseman
In Memory of Steve Widdicombe
Jim Zotkiewicz



LaBay
Exploration Co., L.L.C.

111 Veterans Memorial Blvd.,
Suite 1550
Metairie, Louisiana 70005

Office (504) 371-5967
Fax (504) 371-5969

www.labayexploration.com

In Memory of Bill Craig

Robin A. Broussard
Chevron
M. R. "Bob" Douglass
Bernard L. Hill, Jr.
Jeff Jandegian
John C. Scheldt
Candace V. Strahan
In Memory of James Strahan

PGS. Clearly Better.

Crystal continues...

Wide Azimuth Multi-Client 3D

- » 580 deepwater Gulf of Mexico blocks
- » Ramform technology and efficiency advantages
- » Proven portfolio of Wide Azimuth data processing technologies
 - » Full Azimuth Tomography
 - » 3DSRME
 - » Pre-stack Depth Migration
 - » Kirchhoff
 - » WEM
 - » Beam
 - » RTM

Oslø
Tel: 47-67-52-6400
Fax: 47-67-52-6464

London
Tel: 44-1932-260-001
Fax: 44-1932-266-465

Houston
Tel: 1-281-509-8000
Fax: 1-281-509-8500

Singapore
Tel: 65-6735-6411
Fax: 65-6735-6413

A Clearer Image
www.pgs.com



SEE YOUR DATA IN A WHOLE NEW LIGHT!

Take the pressure out of exploration
and drilling by seeing what you
are going to encounter.



eSeis

www.e-seis.com
713.531.1447

- Lithology & Fluids
- Depositional Facies
- Pore Pressure from V & Q
- Well Planning Consultation

MARINE PROPERTIES, LLC BERKSHIRE EXPLORATION CO.

MONTE C. SHALETT, CPL, PRESIDENT

3030 Lausat Street
Metairie, LA 70001-5924

BUS. (504) 831-7779
FAX. (504) 831-8315

PCI

Paleo Control, Inc.

Houston, Texas
713-849-0044

Drilling Wells, Studies and Data Base

Loyd Tuttle

Frio, SE Texas

Bob Liska

Wilcox, S and SE Texas

Jim Thorpe

Miocene and Cam-Miogyp



WWW.NOGS.ORG

NEW ORLEANS GEOLOGICAL SOCIETY



810 Union Street, Suite 300
New Orleans, LA 70112-1430

DATED MATERIAL