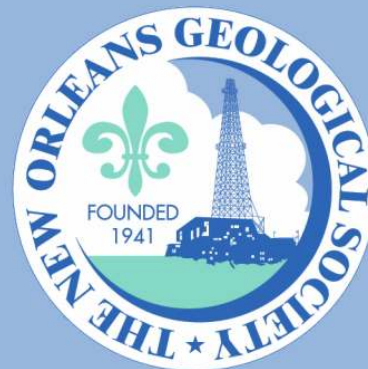


# NOGS LOG



November 2008

Volume 49, Number 5

## Upcoming Events and Activities

### November 3 - NOGS/SGS Joint Luncheon

\*\*\* At the Holiday Inn Downtown Superdome \*\*\*

Free validated parking in hotel garage

Jack Pashin, Director of the Energy Investigations Program for Geological Survey of Alabama will present "CO<sub>2</sub>-Enhanced Oil Recovery Program in Citronelle Field, Southwest Alabama."

(See page 7 for Abstract and Biography)

HOLIDAY INN DOWNTOWN SUPERDOME

ADMISSION:

Check with concierge or  
front desk for location

Lunch served at 11:30am

**with reservation** ..... \$30.00

**without reservation** ..... \$35.00

Student Member with reservation .... Free

### November 7 - SEES 33rd Annual Mineral Auction

6:30pm at Univ. of New Orleans, Geology Department. See page 25 for announcement.

### November 8 - Super Volunteer Day

9:00am-Noon at City Park. See page 30 for announcement.

### November 17-18 - Louisiana Subsidence & Land Loss Symposium

Energy, Coast and Environment Bldg at LSU in Baton Rouge. See page 17 for announcement.

### December 1 - NOGS Luncheon

Guest speaker Brian Lock, University of Louisiana at Lafayette, will speak about the Imperial Barrel Competition – with students present.

### December 7-9 - 29th Annual GCSSEPM Foundation

#### Bob F. Perkins Research Conference

In Houston. "Unconventional Energy Resources: Making the Unconventional Conventional."

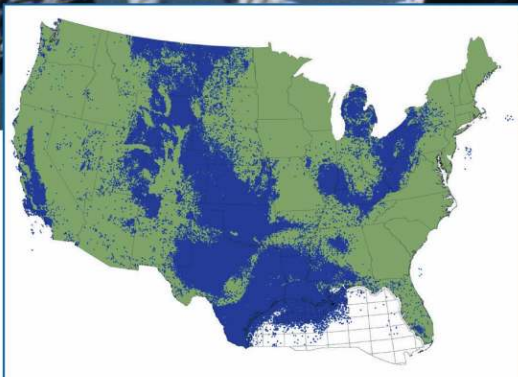
See announcement on page 8.

### December 12 - NOGS Holiday Party

Cannnon's Restaurant, 4141 Saint Charles Avenue. See announcement on page 13.

Introducing

# LASSO



**Lasso up all the digital LAS well log data you need from the industry's largest collection**

With LASSO, lock in TGS' program rates on digital LAS well data from our US collection, growing at an unprecedented pace to more than 500,000 wells over the next several months. LASSO strengthens your exploration projects with the higher-order capabilities of increased digital well log use. LASSO digital data from TGS, the industry's well log data leader, is quality controlled and available online for immediate downloads.

For more information about LASSO, contact your TGS account representative or call 1- (888) LOG-LINE.



Geophysical  
Products



Geological  
Products



Imaging  
Services

[www.tgsnopec.com](http://www.tgsnopec.com)

NORWAY +47 66 76 99 00 | USA +1 713 860 2100 | UK +44 (0) 1234 272122 | AUSTRALIA +61 8 9480 0000

© TGS-NOPEC Geophysical Company. All rights reserved.

**NOGS Office**

Office Manager: Annette Hudson

Office Hours: 8:30am – 3:30pm on Monday-Wednesday-Friday

Tel: 504-561-8980 □ Fax: 504-561-8988

E-mail: info@nogs.org □ Website: www.nogs.org

The office is located at Suite 300, 810 Union Street, New Orleans, LA 70112.

Correspondence and all luncheon reservations should be sent to the above address.

Sent to press on October 20, 2008.

**BOARD OF DIRECTORS**

		<b>Company</b>	<b>Phone</b>	<b>E-mail</b>
President	William M. Whiting	Consultant	504-947-8495	bootscon@aol.com
Vice President	Allan Melillo	Chevron	985-773-6756	ajme@chevron.com
Secretary	Frances Wiseman	MMS	504-736-2912	frances.wiseman@mms.gov
Treasurer	James Swaney	MMS	504-736-2677	james.swaney@mms.gov
President-Elect	Tom Klekamp	Amber Resources LLC	985-845-4046	klekamp@bellsouth.net
Editor	Michael D. Miner	UNO	504-280-3866	mminer@uno.edu
Director 2009	Willis E. Conatser		504-469-2496	weconatser@aol.com
Director 2010	Michael M. Ledet		504-394-9636	mikeledet@cox.net
Director 2011	Scott A. Wainwright	Bret Exploration Co Inc	504-889-2700	scott_wainwright@hotmail.com

**COMMITTEE**

	<b>Chairperson</b>			
AAPG Delegates	Dave Balcer	Chevron	985-773-6725	dbalcer@Chevron.com
AAPG Student Chapter	Bobby Cosentino	Tulane University	504-865-5198	rcosentino@tulane.edu
AAPG Student Chapter	Bryan Rogers	UNO	504-736-2772	thgem@gmail.com
Advertising-Log	Jennifer Connolly	Shell	504-728-6411	jennifer.connolly@shell.com
Auditing	J. David Cope	Ankor Energy	504-596-3672	dcope@ankorenergy.com
Awards	Michael N. Fein	W & T Offshore	504-210-8148	mikef@wtoffshore.com
Ballot	James Swaney	MMS	504-736-2677	james.swaney@mms.gov
Best Paper	David E. Reiter	Energy Partners Ltd	985-893-8072	dreiter@eplweb.com
Continuing Education	TBA			
Employment Counseling	Paul J. Post	MMS	504-736-2954	paul.post@mms.gov
Entertainment	Tom Klekamp	Amber Resources LLC	985-845-4046	klekamp@bellsouth.net
Environmental	Daisy Pate	Eustis Geotechnical Eng.	504-613-5798	dpate@eustiseng.com
External Affairs	Michael A. Fogarty	Sylvan Energy, LLC	603-523-4808	mike.a.fogarty@gmail.com
Field Trip	David Garner	Shell	504-728-6154	David.Garner@shell.com
Finance and Investment	James Swaney	MMS	504-736-2677	james.swaney@mms.gov
Historical	Edward B. Picou, Jr.	Consultant	504-529-5155	epicou@bellsouth.net
Membership/Directory	Penne Rappold	Shell	504-728-4338	prappold@gmail.com
New Geoscientists (NGNO)	TBA			
Nominating	Alfred H. Baker, Jr.	Beacon Exploration, LLC	504-836-2710	abaker1006@aol.com
Non-Technical Education	Duncan Goldthwaite	Consultant	504-887-4377	DGldthwt@aol.com
Office Operations	Arthur H. Johnson	Hydrate Energy International	504-464-6208	artjohnson51@hotmail.com
Publications Sales	Edward B. Picou, Jr.	Consultant	504-529-5155	epicou@bellsouth.net
Photography	J. David Cope	Taylor Energy Co LLC	504-589-0419	dcope@taylorenergy.com
School Outreach	Thomas C. Bergeon	Century Exploration	504-832-3772	Tom.bergeon@centuryx.com
Scouting	Carol Rooney	Consultant Geologist	504-835-1909	carolbrooney@aol.com
Technical Projects	TBA			
Ad Hoc Committee on				
University Support	Michael J. Gallagher	Eni Petroleum	504-593-7480	Michael.Gallagher@enipetroleum.com

**NOGS LOG STAFF**

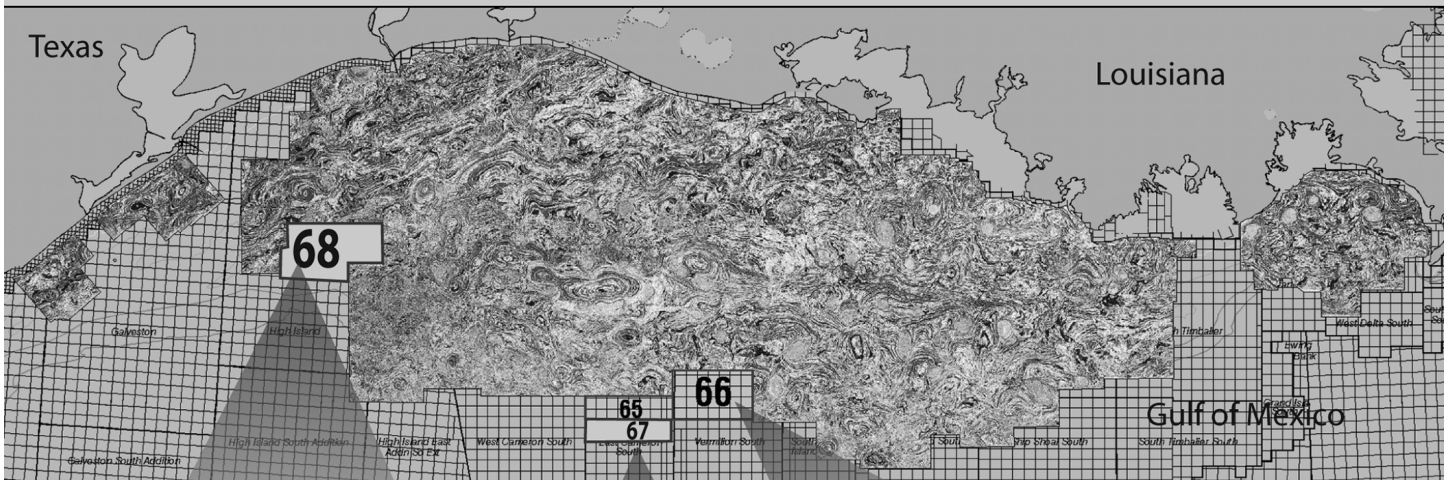
Editor	Michael D. Miner	UNO	504-280-3866	mminer@uno.edu
Editor-Elect	Clare Falcon	Schlumberger	504-592-5385	cfalcon2@new-orleans.oilfield.slb.com
Auxiliary	Susie Baker	NOGA	504-466-4483	abaker1006@aol.com
Info Tidbits	Clare Falcon	Schlumberger	504-592-5385	cfalcon2@new-orleans.oilfield.slb.com
Drill Bits	Paul J. Post	MMS	504-736-2954	paul.post@mms.gov
Webmaster	Jannette Sturm-Mexic			webmaster@nogs.org

**NOGS AUXILIARY**

<b>Officers</b>		<b>Phone</b>	<b>Directors</b>	<b>Year</b>	<b>Phone</b>
President	Linda Peirce	504-393-7365	Ruth Ingram	2008-09	504-887-5404
1st Vice-President	Jean Jones	504-738-8091	June Perret	2008-09	504-881-9357
2nd Vice-President	Beverly Kastler	504-286-0879	Joan Sylvester	2008-09	504-738-2934
Secretary	Dolores Murphy	504-393-0878	Beverly Christina	2009-10	504-835-2383
Treasurer	Judy Lemarie'	504-393-8659	Peggy Rogers	2009-10	504-392-6323
Parliamentarian	Carol Andrews	504-887-3432	Judy Sabate'	2009-10	504-861-3179
Member-at-Large	Susie Baker	504-466-4483			

--- NOGS Contact List continued on page 10 ---

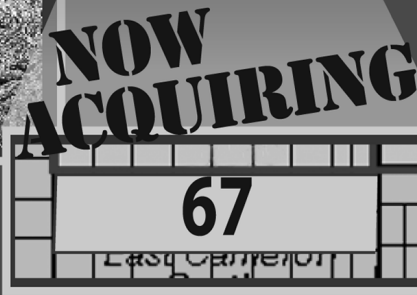
# By the time you read this ad, this map will be out of date.



Because our crews are acquiring data every day, all day  
to expand Fairfield's 3D data base.



**High Island (68) &  
E. Cameron S. (67)**  
30,000' offsets,  
11 second records  
processed in mid 2008



**E. Cameron South (65) &  
Vermilion South (66)**  
30,000' offsets, 11 second records  
processed in January 2008

Visit [www.fairfield.com](http://www.fairfield.com) to view Fairfield's multi-client coverage of 3D GOM data.



**FAIRFIELD**  
INDUSTRIES

Houston 281/275-7500  
New Orleans 504/525-6400

Proud to be  
an American  
company



### *from the President*

This letter starts on 10/04/08 after a walk around "Discovery Green" in front of the Brown Convention Center in downtown Houston, site of the GSA/GCAGS/SSA-ASA-CSSA Joint Annual Meeting. The downtown area was definitely ready to host large conventions. It was clean and children were playing in the water park and fountains, families were picnicking together, and groups of young adults exercised in the great fall weather. Nearly 8500 were registered, not including exhibitors. I enjoyed sharing lunch and conversation with a MSU professor, Dr. A.T. Cross, still going at 92. Many individual talks were excellent and informative. I am more used to seeing technical petroleum industry displays in an exhibit hall, but could accept the large, green John Deere Harvester. There were plenty of diverse displays and book stores. It was also good to see some friends.

The semi-annual GCAGS Board meeting on October 5th was well attended with almost all officers, representatives, committee heads, and presidents of the member Societies present. Rick Fritz, AAPG executive director, was also present. Current growth in AAPG membership was a major discussion point. Ken Nemeth is to be commended for his effort this past year as president. The President's reception at The Grove is also worth remembering. All business was concluded by 2 PM. The GCAGS in combination with its member societies (including NOGS) has given over \$135,000 in grants and scholarships over the years. The Corpus Christi Society was cited for their maps and rocks in schools program. A copy of the Committee and Society Report is in the NOGS Office.

The "Kick Off" party at the New City Grill in Old Metairie was a success, and the food was of high caliber. Thanks to Tom Klekamp our President-elect and his wife Amber and NOGA our fall season is off to a good start. Some of our newer members were in

attendance. This is a good way to meet our membership in a relaxed social atmosphere. I encourage more of you to attend our business, educational, professional and social events.

Our "new" webmaster, Ed Picou, is busy upgrading our web site and links with the goal of maintaining and improving its user-friendliness. Contact Ed if you have any suggestions.

Our scholarship recognitions luncheon was held Oct 13th (postponed from September 8th due to Hurricane Gustav). However, the checks were mailed out in September to the department heads as we did post Katrina. Good job by Art and the Foundation Board. There is a new scholarship in the works, more in a future LOG.

The Field Trip scheduled for October 18th, "The Baton Rouge Fault and its Friends," is a near sellout. Plenty of hard work has gone into logistics planning, site selection, and write-ups by Tom Klekamp, Dave Garner, Kathy and Kelly Haggard, Clare Falcon, Rick McCullough, and, of course Dr. Woody Gagliano. The weather this weekend promises to be great.

Mike Miner has asked that all NOGS LOG content be submitted by the second Monday of each month. His email for submissions is mminer@uno.edu.

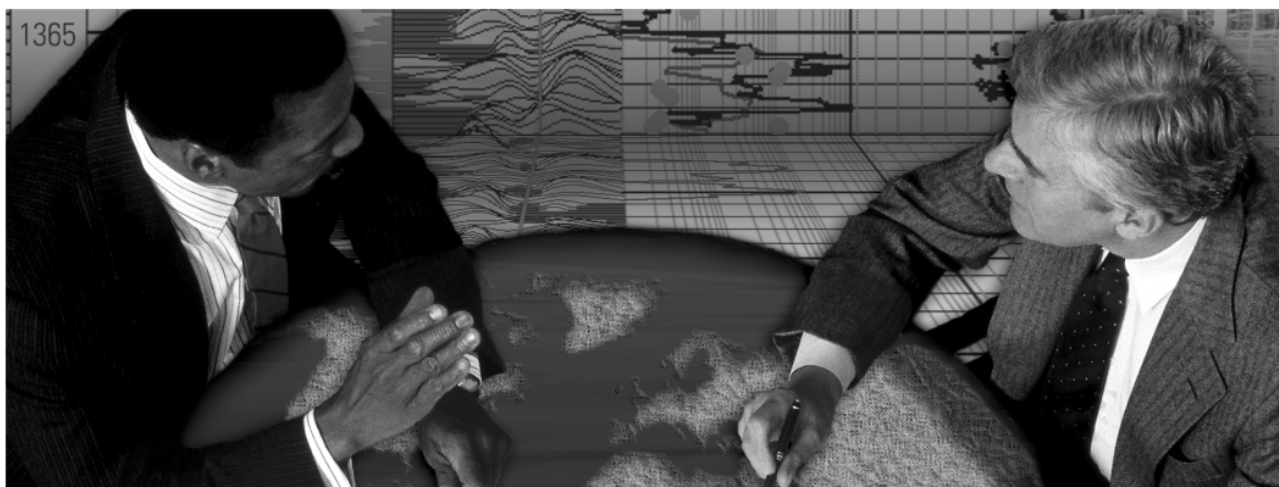
A reminder: Tom Hudson and his co-chair Dr Nancye Dawers are organizing their committees for the AAPG 2010 scheduled to be in New Orleans in April of that year. VOLUNTEERS. VOLUNTEERS, VOLUNTEERS

*Bill*

# energyinformation

Business solutions for  
the oil & gas industry

**Schlumberger formation evaluation solutions deliver the answers you need.** Our extensive portfolio of services, leading-edge technology, and advanced conveyance options keep you in communication with your well throughout its life cycle.



*With formation evaluation technologies from Schlumberger, you can make the best decisions for optimized performance in every well.*

## **The formation evaluation one-stop shop**

Whether you are logging in open hole or behind the casing, our broad selection of services ensures the best solution for acquiring formation evaluation data. Tools can be conveyed while drilling or on wireline or pipe. We offer many specialized evaluation capabilities, from density, neutron porosity, and resistivity to borehole imaging, nuclear magnetic resonance logging, borehole seismic, formation pressure testing, and fluid sampling. Advanced triple-combo logging options include the VISION\* formation evaluation and imaging-while-drilling services. Coupled with Pulse\* telemetry and surveying services, the VISION family provides real-time formation evaluation data and enables optimum well placement.

High-speed wireline measurements are recorded with the Platform Express\* logging services. The SlimXtreme\* platform is designed for high-pressure, high-temperature environments and the ABC\* Analysis Behind Casing services are used after casing is set.

Expert interpretation from the engineers and geoscientists of Schlumberger Data & Consulting Services brings all your data together to give you the answers you need. This expertise is available after logging is complete or as real-time two-way wellsite communication through the InterACT\* real-time monitoring and data delivery system.

Schlumberger delivers leading-edge technology and interpretation expertise for all your formation evaluation needs, so every well benefits from the very best information.

**For more information visit**  
**[www.slb.com/oilfield/formation\\_evaluation/](http://www.slb.com/oilfield/formation_evaluation/)**

\*Mark of Schlumberger

04-FE-114

# Schlumberger

# November 3 Joint NOGS/SGS Luncheon Presentation

\*\*\* at the Holiday Inn Downtown Superdome \*\*\*

## CO<sub>2</sub>-Enhanced Oil Recovery Program in Citronelle Field, Southwest Alabama

presented by

**Jack Pashin**

Director, Energy Investigations Program, Geological Survey of Alabama

### ABSTRACT

Citronelle Field is developed at the crest of Citronelle Dome, which is a giant salt-cored anticline in the eastern Mississippi Interior Salt Basin of southwest Alabama. More than 169 million barrels of 42-46° gravity oil have been produced from the Lower Cretaceous Donovan Sand in Citronelle Field. Production has declined significantly, but CO<sub>2</sub>-enhanced recovery operations have strong potential to revitalize the field. Citronelle Dome is located near a major coal-fired power plant, and major capacity exists for the sequestration of CO<sub>2</sub> emissions from the power plant in saline reservoirs between the Donovan Sand and the Cretaceous chalk of the Selma Group.

Citronelle Dome is an elliptical structure in plan view that forms a simple four-way structural closure with limbs dipping less than 3°. The Donovan oil accumulation is sealed by a thick succession of shale and anhydrite with the oil-water contact being more than 100 feet above the structural spill point of the dome. The Donovan Sand is extremely heterogeneous and contains a multitude of oil accumulations in stacked marginal-marine sandstone bodies. The thickness of individual pay zones typically ranges from 2 to 25 feet. Individual sandstone bodies are

aggradational deposits, and the Donovan interval can be subdivided into two retrogradational sequence sets. Approximately 37 percent of the original oil in place has been recovered by primary and secondary methods, and CO<sub>2</sub>-enhanced oil recovery has the potential to increase reserves by up to 20 percent.

A 5-spot well pattern in the northeastern part of Citronelle Field is being developed for a pilot program in which 15,000 tons of CO<sub>2</sub> will be injected. Injection will take place simultaneously into two sandstone units and will be performed as a water-alternating-gas (WAG) program. The injection well is located in a thin area in the two target sandstone units, and the thickest pay sections are in the eastern part of the well pattern. CO<sub>2</sub> will be injected in two slugs of 7,500 tons, and baseline reservoir simulations indicate that this injection will result in a nearly four-fold increase of the oil production rate in the pilot area. Based on modeling results, continuous injection of 115 kilotons of CO<sub>2</sub> will maximize sweep of the pilot area and can potentially increase the maximum oil production rate of the 5-spot pattern from less than 40 to nearly 600 barrels per day.

### BIOGRAPHY

**Jack Pashin** is director of the Energy Investigations Program of the Geological Survey of Alabama. He received a Ph.D. in Geology from the University of Kentucky in 1990. His primary research focus is petroleum geology, coal geology, and carbon sequestration. Dr. Pashin has

published extensively and has received numerous awards for his research. He currently serves on the editorial boards of the AAPG Bulletin and the International Journal of Coal Geology and is Vice Chair of the Coal Geology Division of the Geological Society of America.

**THE LUNCHEON RESERVATION DEADLINE IS OCTOBER 29 - CONTACT THE NOGS OFFICE**

### “And Looking Ahead...”

The next NOGS Luncheon will be December 1. Guest speaker Brian Lock, University of Louisiana at Lafayette, will speak about the Imperial Barrel Competition – with students present. Contact the NOGS office to make your reservation.



## **Answering the Challenges of Production from Deep-Water Reservoirs:**

### **Analogues and Case Histories to Aid a new Generation**

December 7-9, 2008

Marriott Westchase: Houston, TX

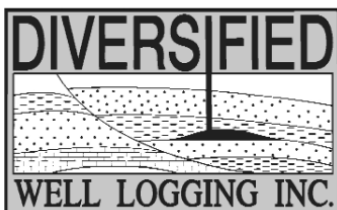
Information and registration are available  
At our web site:

**[www.gcssepm.org](http://www.gcssepm.org)**



## Relax. We'll keep you posted.

Your rig is offshore and you are not. How do you know what's going on so many miles away? You know because we tell you. Daily or even hourly, Diversified Well Logging's engineers update you on the status of your rig. We are your eyes and ears, especially when it comes to deep water or high pressure, high temperature areas. Diversified offers 24-hour surface evaluation. We provide secure and customized real-time data communication, in-house research and development and 24/7 on-call support for our equipment and our engineers. Whether you have a 10-day job or 110-day job, we provide the specialized attention you require. So, relax. We're with you every step of the way.



*Serving the Gulf Coast for over 40 years.*

New Orleans • Lafayette • Houston • Dallas • Corpus

800.280.2096

711 West 10th Street • Reserve, LA 70084 • Phone: 985.536.4143 • Fax: 985.536.2427  
sales@dwl-usa.com



**PALEO  
DATA**

**FULLY INTEGRATED AND  
CENTRALIZED BIOSTRATIGRAPHIC  
SERVICES**

- ▼ Single-source biostratigraphic databases  
for increased accuracy and consistency
- ▼ Integrated foram / nannofossil analyses
- ▼ Complete wellsite paleo services
- ▼ In-house sample preparation  
lab for quality-monitoring  
and efficiency
- ▼ Sample pick-up service

6619 Fleur de Lis Drive  
New Orleans, LA 70124  
(504) 488-3711

[www.paleodata.com](http://www.paleodata.com)

## MCMORAN EXPLORATION CO.



## MCMORAN OIL & GAS

[www.mcmoran.com](http://www.mcmoran.com)

NYSE: MMR

16676 Northchase Dr.  
Houston, TX 77060  
(281) 539-7600  
Fax: (281) 539-7655

1615 Poydras  
New Orleans, LA 70112  
(504) 582-4000  
Fax: (504) 582-4155

110 Travis St., Suite 140  
Lafayette, LA 70503  
(337) 735-9150  
Fax: (337) 735-9151

## NOGS CONTACT LIST

--- continued from page 3 ---

### MEMORIAL FOUNDATION

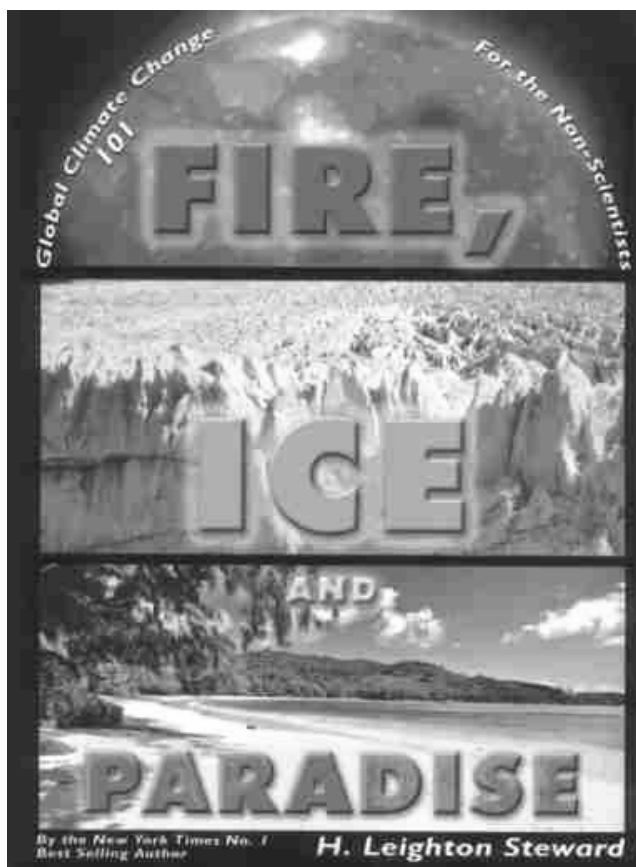
#### BOARD OF TRUSTEES

		<b>Company</b>	<b>Phone</b>	<b>E-mail</b>
2008-09 Chairman	Arthur H. Johnson	Hydrate Energy International	504-464-6208	artjohnson51@hotmail.com
2008-09 Secretary	William M. Whiting	Consultant	504-947-8495	bootscon@aol.com
2008-09 Trustee	David E. Balcer	Chevron	985-773-6725	dbalcer@chevrontexaco.com
2008-09 Trustee	George T. Froming	Consultant	504-799-1918	gtfroming@yahoo.com
2009-10 Trustee	Michael C. Fauquier			
2009-10 Trustee	J. David Cope	Ankor Energy	504-596-3672	dcope@ankorenergy.com
2010-11 Trustee	Timothy J. Piwowar	Shell	504-728-4066	tim.piwowar@shell.com
2010-11 Trustee	Michael N. Fein	W & T Offshore	504-210-8148	mikef@wtoffshore.com

### AAPG DELEGATES

#### Term Ends

		<b>Company</b>	<b>Phone</b>	<b>E-mail</b>
2009	David E. Balcer	Chevron	985-773-6725	dbalcer@Chevron.com
2009	William Whiting	Consultant	504-947-8495	bootscon@aol.com
2009a)	Nancye Dawers	Tulane University	504-862-3200	ndawers@tulane.edu
2009a)	David Cooke	MMS	504-736-2609	david.cooke@mms.gov
2011	Tom Hudson	Chevron	985-773-7163	tom.hudson@chevron.com
2011	Edward B. Picou, Jr.	Consultant	504-529-5155	epicou@bellsouth.net
2011a)	Brenda Reilly	Energy Partners Ltd.	504-799-4811	breilly@eplweb.com
2011a)	Robert Rooney	Century Exploration	504-832-3777	Robert.rooney@centuryx.com



## Are You Interested in Global Climate Change?

H. Leighton Steward, long-time NOGS member and former CEO of the Louisiana Land and Exploration Company, has published an excellent book that lays out all of the “science” that bears on the issue. However, he makes no judgments. The text avoids technical terms as much as possible and has 39 excellent figures, plus a glossary and references. His book was reviewed in the October 2008 AAPG **EXPLORER** by Lee C. Gerhard.

Book copies may be ordered from:

[www.authorhouse.com](http://www.authorhouse.com) or 1-888-519-5121

Price: \$19.95 soft cover, \$25.00 hard cover, plus shipping & handling

# SEI®

*Seismic Exchange, Inc.*

**Strategic Speculative Surveys  
Geophysical Data Marketing & Management**

**Your**  
**Full Service  
National  
Seismic Data  
Marketing Firm**

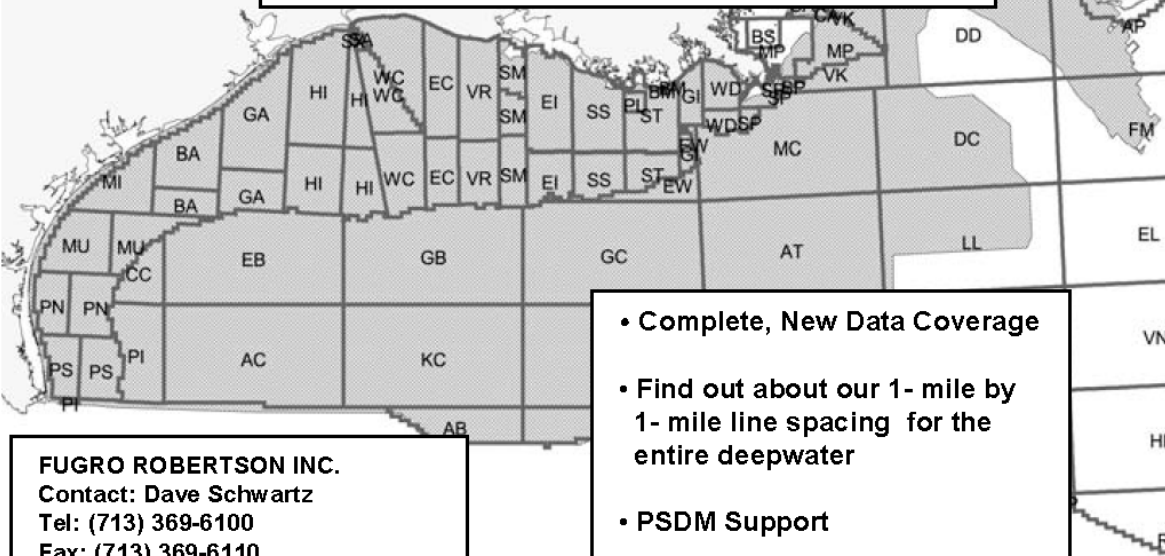
New Orleans  
Dallas  
Houston  
Denver  
Oklahoma City  
Corpus Christi  
Tulsa

201 St. Charles Avenue, Suite 4300, New Orleans, Louisiana 70170-4300  
Telephone 504.581.7153 Fax 504.581.9591  
[www.seismicexchange.com](http://www.seismicexchange.com)

# Robertson



**"The Place to Go"  
For GOM Gravity Data and Interpretations**



**FUGRO ROBERTSON INC.**  
Contact: Dave Schwartz  
Tel: (713) 369-6100  
Fax: (713) 369-6110  
Email: [infofri@fugro.com](mailto:infofri@fugro.com)  
[www.fugro-lct.com](http://www.fugro-lct.com)

- Complete, New Data Coverage
- Find out about our 1- mile by 1- mile line spacing for the entire deepwater
- PSDM Support
- 3D Modeling



100 Northpark Blvd.  
Covington, LA 70433

(985) 773-6000

*"Serving the Oil & Gas Industry Since 1983"*

Geological,  
Geophysical &  
Land Drafting

Anthony Catalanotto

*President*

Stefani Kelone

*Drafting and Design*



## Geo-Draft, Inc.

*A Professional Drafting & Graphics Firm*

3349 Ridgelake Drive □ Suite 202 □ Metairie, LA □ 70002

Office: (504) 836-2882 Fax: (504) 836-2877

[geodraft@bellsouth.net](mailto:geodraft@bellsouth.net)



## LaBay

Exploration Co., L.L.C.

111 Veterans Memorial Blvd.,  
Suite 1550  
Metairie, Louisiana 70005

[www.labayexploration.com](http://www.labayexploration.com)

Office (504) 371-5967  
Fax (504) 371-5969

# SAI

## Sydboten & Associates, Inc.

*Geological and Geophysical Consulting,  
3-D Seismic Interpretation  
For Oil & Gas Exploration*

**Ben D. Sydboten, Jr., CPG**

124 Heymann Blvd., Suite 202  
Lafayette, LA 70503

Office (337) 234-5288  
Cell (337) 234-5491

# NOGS HOLIDAY PARTY



**December 12, 2008**

**Cannon's Restaurant**  
4141 St. Charles Avenue  
7-10 PM

Ample free parking behind Cannon's

Featuring Cannon's  
famous reception buffet

Open bar  
(Call brands downstairs at the cash bar)

Door prizes  
1/2 and 1/2



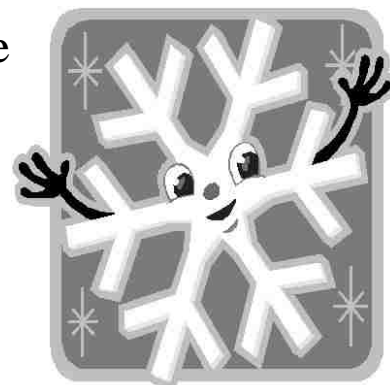
Cost:  
\$40 per person



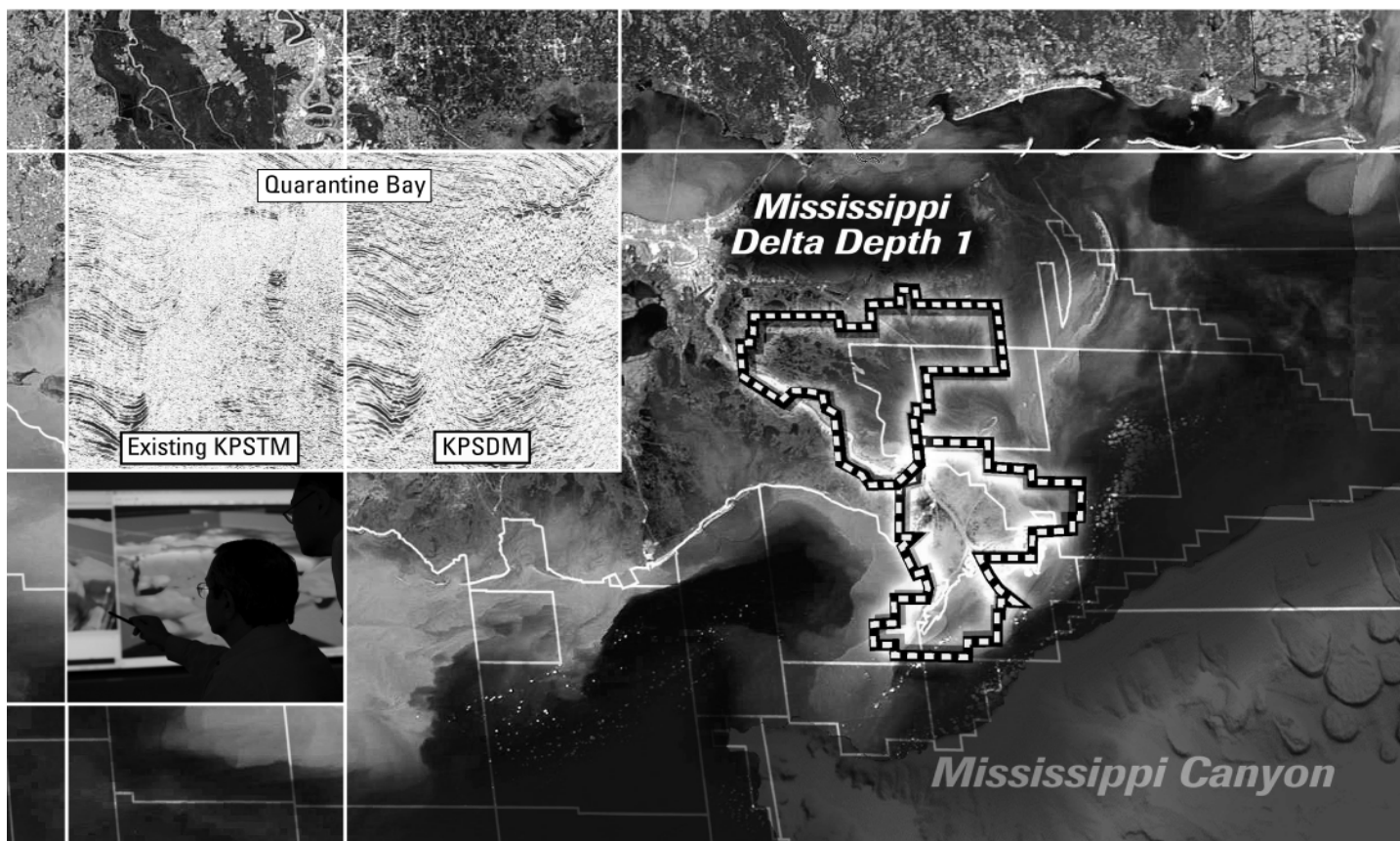
Open to NOGS, SIPES, etc. and guests

Reservations via the NOGS Office  
561-8980

Email: [info@nogs.org](mailto:info@nogs.org)



# Expand your opportunities ...



## Announcing Mississippi Delta - *Depth 1*, current depth image reprocessing now in progress.

**Multiclient<sup>E</sup>**

Experience the industry-leading benefits of WesternGeco state-of-the-art processing,  
designed to eliminate fault shadows and enhance deep imaging.

Delivering anisotropic Kirchhoff volumes:

- Processing and remigration of twelve legacy surveys covering 1,855 square miles.
- High-quality time imaging using relative amplitude anisotropic prestack time migration followed by improved structural imaging utilizing anisotropic prestack depth migration.

Excellence in technology – Experienced professionals.

To learn more about our Multiclient products, call +1 713 689 1000.

**Multiclient to the Power of E**

[www.slb.com/westerngeco](http://www.slb.com/westerngeco)



© 2008 Schlumberger

## George W. Schneider Sr. Memorial Scholarship

The NOGS Memorial Foundation is pleased to announce the creation of a new \$2500 scholarship that will be awarded for the first time next year. The scholarship is named in honor of George W. Schneider Sr., the first president of NOGS. The scholarship will rotate between three universities, with a student from UNO being the recipient for the first year, a Tulane student for the second year, and an LSU student for the third year. The scholarship may be awarded to a junior, senior, or graduate student.

George W. Schneider Sr. was a remarkable individual and a great geologist. He was born in Denver in 1899 and graduated from the Colorado School of Mines in 1921 with a degree in "Engineer of Mines". After working in a variety of positions for several companies, George joined The Texas Company (later Texaco) in 1924. After initial assignments in Colorado, Montana, and Kansas, George was assigned to the company's Louisiana-Arkansas Division, which included not only those states but also all of the Southeastern U.S. and with portions of East Texas.



During his 30 year career with Texaco George rose to the position of Division Geologist and played a vital role in the company's extraordinary exploration and production success. He was an outstanding geologist and executive, and was also highly regarded for his interactions with others. As George's responsibilities grew with the expansion of the division, he maintained his balance and objectivity, using his skills and authority to guide others. His positive approach to life was challenged by health issues, including throat surgery that left his voice a hoarse whisper. George overcame such adversity with determination and a positive spirit. After leaving Texaco, George continued his exploration success as a consultant until his death in 1963.


George was an AAPG member for 38 years, serving on several committees and helping put on two national conventions. He was active in the Shreveport Geological Society while living in that city, including serving as its President. After moving to New Orleans in 1941, George was instrumental in forming the New Orleans Geological Society and served as our first President. It is fitting that a scholarship has been established as a memorial to him.


This scholarship has been made possible by a generous initial gift from his son, George W. Schneider Jr., a longtime NOGS member and former editor of the NOGS Log. Our plan is that with additional donations to the Memorial Fund, we will eventually be able to have George W. Schneider Sr. scholarship recipients at UNO, Tulane, and LSU every year. I hope that you will consider a generous donation to help make this happen.


**Art Johnson**

***Chairman - NOGS Memorial Foundation***

# A Company that Shines

 Geophysical Products

 Geological Products

 Imaging Services



TGS has been providing best-in-class multi-client data and services to successful E&P companies for over a quarter century. Our geophysical and geological data products are distributed around the globe and include one of the youngest and best targeted multi-client seismic libraries, extensive magnetic and gravity data, the industry's largest global database of digital well logs, and regional interpretive products. We also provide high-end depth imaging services to help resolve complex seismic imaging problems. Together, our products and services give you a more complete picture of the subsurface to help your exploration program *shine*.

For more information, visit [www.tgsnopec.com](http://www.tgsnopec.com) today.

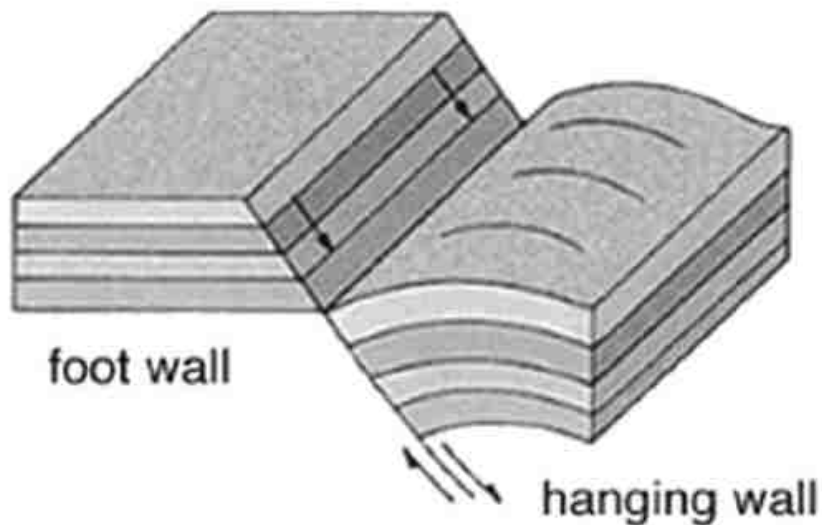


[www.tgsnopec.com](http://www.tgsnopec.com)

NORWAY +47 66 76 99 00 | USA +1 713 860 2100 | UK +44 (0) 1234 272122 | AUSTRALIA +61 8 9480 0000 | RUSSIA +7 495 959 8117  
©TGS-NOPEC Geophysical Company. All Rights Reserved.

# Baton Rouge Geological Society

## *Louisiana Subsidence and Land Loss Symposium*



November 17 & 18, 2008

Energy Coast & Environment Building  
Louisiana State University  
Baton Rouge, Louisiana

For more information visit BRGS website <http://www.brgs-la.org>

Hosts:

Abstracts due October 17, 2008  
Expanded Abstracts  
due October 31, 2008

Louisiana Geological Survey  
Baton Rouge Geological Society

## **MAURICE GORDON FREY**

### **1913-2008**

First in exploration — first in teaching — and first in the admiration of his Industry and University compatriots.

Maurice Gordon “Doc” Frey, who died at age 95 in New Orleans on September 12, 2008, had a truly remarkable career. Born in Cincinnati, he earned his bachelors and masters degrees at the University of Cincinnati, and his PhD at the University of Minnesota.



He joined Chevron (Standard Oil of California) in 1939, and was in on the ground floor of Saudi Arabian exploration and discovery, doing gravity and seismic work there until World War II forced Chevron to return him to the States. Since then, with Chevron, he has been in almost all of Chevron’s (then, The California Company’s) major locations: Denver, Casper, San Francisco, and New Orleans.

But, the oil industry was not everything. In 1948 he left Chevron, in San Francisco, to teach for four years at his old alma mater, the University of Cincinnati.

In 1952 he returned to Chevron, first in Denver, and then at his final and longest lasting location, New Orleans.

In New Orleans he was Chief Geologist for all of Chevron’s operations out of that office, which then included not only Offshore and South Louisiana, but also the Mississippi - North Louisiana Salt Basin, plus the Appalachians, Michigan, the Mississippi, Alabama, and Florida Gulf Coasts, and peninsular Florida.

In New Orleans his warmth and friendliness made him the mentor of many young geologists, including the writers of this article. Few in management were as open, approachable, and helpful.

His abilities and energy were not confined to Chevron. Always active in the New Orleans Geological Society, he was its President in 1969-70. In 1976, Doc Frey served as General Chairman for the AAPG-SEPM convention hosted by NOGS.

His friendliness and interest in others led him back into teaching again in 1976, this time at the University of New Orleans. There he taught geology for 17 years until his retirement in 1993. Those 17 years included five summers teaching at UNO’s extension school in Innsbruck, Austria.

As he did at Chevron, he won the affection of his UNO students and faculty colleagues.

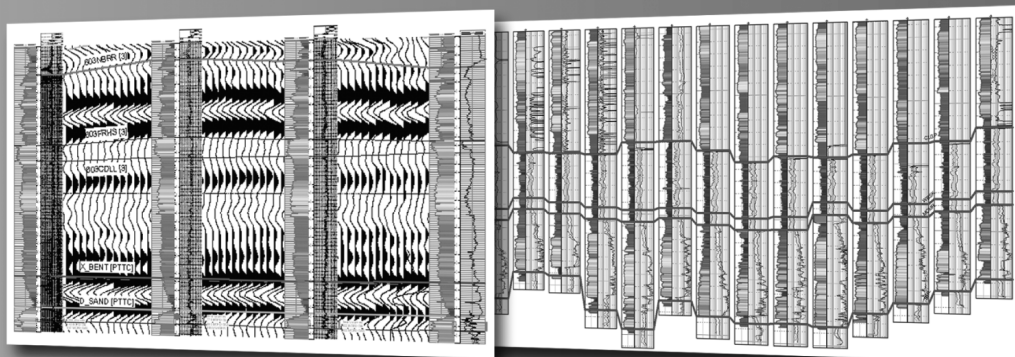
His life was not all geology and teaching. He married his life-long companion, Marjorie Wells Frey, of Colfax, Louisiana, in 1945. They had two daughters, Ellen Frey Anderson, now deceased, and Beverly Frey Strange. Ellen and Beverly have borne them five grandchildren, and, to date, seven great grandchildren.

“Doc” left his mark on many who were fortunate to have known him. He is admired, and he is missed.

***Duncan Goldthwaite***  
***Bob Branson***

**NO MORE WAITING!** Available today from IHS, easy and affordable access to one of the largest U.S. digital log collections

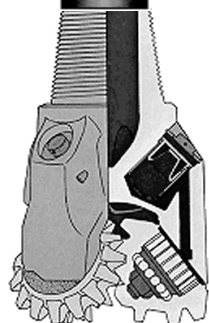
- Request a free 2' x 3' IHS digital log coverage map at [ihsonline.com/energy/DigitalLogs](https://www.ihsonline.com/energy/DigitalLogs)



Why wait? Subscribe today! Call **888.OIL.DATA** (645.3282)  
or e-mail **[sales.energy@ihs.com](mailto:sales.energy@ihs.com)**

## South Louisiana and Offshore Exploration and Production Activity

# DRILL BITS



- **Brigham Exploration Co.** on 10 September announced that its fourth consecutive 2008 Southern Louisiana well was successfully drilled and production tested from two separate zones at rates of approximately 13.9 MMCFG/D and 4.6 MMCFG/D. Brigham's previously announced third Southern Louisiana discovery at Breton Sound was production tested at a rate of approximately 6.0 MMCFG/D.

Brigham successfully drilled and completed the Cotten Land #5, a twin to its high production rate Cotten Land #3 discovery. The Cotten Land #5 successfully targeted the upper 50 feet of apparent pay which remains behind pipe in the Cotten Land #3 producer. The Cotten Land #5 was recently production tested from the 50-foot pay interval at a rate of approximately 13.9 MMCFG/D. In addition, a lower pay interval with approximately 7 feet of pay was also production tested at an initial rate of approximately 4.6 MMCFG/D. A third apparent pay interval, also approximately 7 feet thick, was encountered above both intervals but has not yet been tested. Brigham retains a 45% WI and 33% NRI in the Cotten Land #5, and expects completion to sales in October. Penn Virginia is also a participant with Brigham in the Cotten Land wells, and operates the wells during the production phase.

Brigham successfully drilled and is currently completing its third consecutive joint venture well with Clayton Williams Energy Inc. The Breton Sound SL 19054 #1 was recently production tested at an initial rate of approximately 6 MMCFG/D. Brigham retains a 50% working and 39% revenue interest in the Breton Sound SL 19054 #1.

Brigham previously announced the successful production tests of its first two 2008 Southern Louisiana discoveries, the Chandeleur Sound SL 19312 #1 and the Main Pass SL 18826 #1. Brigham retains a 50% WI and 38% NRI in the SL 19312 #1, and a 50% WI and 39% NRI in the SL 18826 #1.

- **Golden Gate Petroleum** on 29 September advised that the Jumonville #1 at Bullseye Prospect, Iberville Parish, Louisiana, began initial flow testing on 25 September after being perforated in the upper 8 feet of the 47 feet of *Miogyp* sand pay. The initial production rate was 520 BOPD of 40.8°API oil, with no water, and 293 MCFGPD through a restricted 7/64" choke after the initial 24 hour period. The current surface flowing pressure of 7,323 psi showed little drawdown from the initial surface pressure measurements.

The small percentage drawdown at the current flow rate indicates that the *Miogyp* reservoir is capable of much higher deliverability. The initial perforations and flow rates have been restricted to avoid damage to the reservoir during the initial testing period. After the completion of permanent production and distribution facilities (about two weeks), the flow rate will most likely be increased from the initial rates in order to determine the full deliverability of the reservoir.

In effect, commercial production began with the testing because the temporary production facilities were sufficient to handle the testing program.

The Company's reserve estimate from the *Miogyp* will be refined over the coming weeks with follow-on drilling and a reserve audit. In addition, there is further

significant upside with the Jumonville #2 well which will test the larger reserves of the deeper *Cib Haz* interval. The well should be spudded within the next 6 to 8 weeks

Separately, the Golden Gate and its partners remain confident of a discovery of apparent net oil/gas pay observed in the Jumonville # 1 well in the *Camerina* sands approximately 200 feet above the *Miogyp* interval. Flow testing of this interval was not possible in the current borehole. Discoveries in the two objectives above the *Cib Haz* (*Miogyp* and *Camerina*) provide confidence for the deeper target, as these reservoirs all have the same trapping mechanism. The Company hopes to have the opportunity to formation test the *Camerina* in the offset Jumonville #2.

There are now two wells on the Bullseye prospect, Jumonville #1 and the previously Noble drilled Acosta #1 well that was never tested but identified 50 feet of *Miogyp* sand. These two wells combined with the upcoming Jumonville #2 well and the existing 3D seismic data provides confidence in the structural definition of the field assisting reserves quantification and future planning for development drilling.

Planning and permitting has already begun for the Jumonville #2 well from the existing location. This well will test the deeper *Cib Haz* interval and provide an added penetration of the *Miogyp* reservoir 1,500 feet to the west of Jumonville #1, further increasing proven reserves. The drilling plan will allow for formation fluid testing prior to setting intermediate casing across the *Miogyp/Camerina* interval, the well will then be drilled to test the deep objective at 14,400 feet. A drilling rig has been located and is expected to start drilling Jumonville #2 within 6 to 8 weeks. As production facilities will be completed, this well will be put on-line immediately after completion.

The deeper *Cib Haz* interval is contained in the same trap as the proven *Miogyp* reservoir and is therefore considered to have a high probability of success. The proprietary seismic data, which provided an accurate pre-drill estimate of pay thickness in the current well, indicate substantially thicker reservoir sand over a larger area in the deeper reservoir. If this deeper test is successful, the combined reserves of the *Camerina*, *Miogyp* and *Cib Haz*, would make Bullseye one of the larger onshore discoveries in South Louisiana in recent years.

Golden Gate Petroleum Ltd (43.33% WI) is the operator of the Jumonville #1 well. Partners are Modena Resources Limited (15.00% WI), Pantheon Resources PLC (15.00% WI), Eastern Advisors (20.00% WI), and Nuenco (6.67% WI). The WIs do not reflect the back-in rights of project vendor.

**- Paul Post**



# Eni Petroleum

**1250 Poydras Street  
Suite 2000  
New Orleans, LA 70113  
Tel: (504) 593-7000  
Fax: (504) 593-7745**

**1201 Louisiana Street  
Suite 3500  
Houston, TX 77002  
Tel: (713) 393-6100  
Fax: (713) 393-6205**



**Shell has worked in partnership  
with the NOGS for many years, and  
is proud to count the society among  
its closest business associates.**

The New Orleans Geological Society was organized in 1941 to foster scientific research and advance the science of geology. Particular emphasis is laid on the exploration for and production of petroleum and natural gas. Related objectives include encouraging the adoption of improved methods of exploration, disseminating pertinent geological and technological data, and maintaining a high standard of professional conduct among its members.

[www.shell.com/us.sepco](http://www.shell.com/us.sepco)

## **BIG BANG BLAMED ON SOFTWARE UPGRADE!** [Should Have Used KINGDOM®!]

**Avoid system-wide consequences  
from upgrading your geoscience software.**

KINGDOM, from SMT, gives you the best in technology today without requiring that you abandon existing solutions. It's easy to use, coexists with your current software, and provides cutting edge, scaleable functionality - getting you productive quickly! In fact, 9 of 10 customers surveyed say KINGDOM is easier to use than the competition.

**No wonder KINGDOM is the industry leader for PC-based interpretation. And our reputation is...expanding.**



Visit our Web site at [www.seismicmicro.com/smt-bigbang10](http://www.seismicmicro.com/smt-bigbang10) and learn why KINGDOM 8.2 is the market leader for PC-based interpretation with over 2,500 companies in 85 countries.



Intuitive. Integrated. Interpretation.

**America** +1 (713) 464-6188 **Asia** +65 6220 1089 **Europe** +44 (0) 20 8240 6524

## INFO TIDBITS

- **UNO Society of Earth and Environmental Sciences (SEES) 33rd Annual Mineral Auction** will be held on November 7, 2008. Benefits SEES and supports student field trips. Auction items include unique rock and mineral hand specimens, fossils, and jewelry. Photos of this year's lots can be viewed at:  
<http://www.flickr.com/photos/8325701@N07/sets/72157608017954724/>
- **US Geothermal power generation estimate:**  
The US Geological Survey has released the first assessment in over 30 years of the U.S.'s capability to produce geothermal power. Results of the study titled, 'National Geothermal Resource Estimate' indicate that the United States has approximately 9,057 Megawatts-electric (MWe) of power generation potential from conventional, identified geothermal systems, 30,033 MWe potential from conventional, undiscovered geothermal resources, and 517,800 MWe potential from unconventional (high temperature, low permeability) resources. Geothermal energy is a domestic, renewable energy resource that is highly underutilized according to the USGS study. In 2005 nearly 15,000 Gigawatt-hours of geothermal power were generated in the U.S., accounting for 25% of domestic nonhydroelectric renewable electric power generation (4,055,400 total Gigawatt-hours of electricity were produced in the United States in 2005).  
More at: <http://www.usgs.gov/newsroom/article.asp?ID=2027>  
USGS Fact Sheet: <http://pubs.usgs.gov/fs/2008/3082/>  
USGS Energy Resources Program: <http://energy.usgs.gov/>
- **NASA Jet Propulsion Laboratory (JPL) Space Gallery:**  
Navigate through our solar system, galaxy, and universe on the JPL's new website packed with amazing images captured by NASA spacecraft. The user can navigate the site by clicking on the planet of interest. There are also sections devoted to asteroids and imagery from outside of our solar system. Brief figure captions summarize each image with links to more detailed accounts of the imagery and related research.  
Go to: <http://www.jpl.nasa.gov/gallery/>

- *Clare Falcon and Mike Miner*

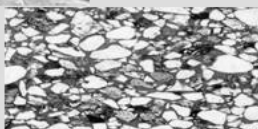
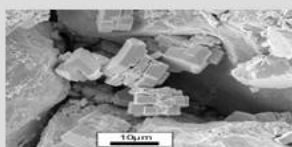
# Complex Reservoir Evaluation?

Log Calibration SATURATION MODELING PVT Analysis  
 Reservoir Performance FRACTURE DESIGN Sand Control  
 Completion Design Flow Assurance Borehole Stability  
 Reserve Estimates COMPREHENSIVE CORE ANALYSIS

*Simple Solution: Rely on Experience!*

*Rely on Core Laboratories!*

- Comprehensive core analysis laboratory and wellsite services
- Comprehensive reservoir fluid laboratory and sampling services



New Orleans: 504-733-6583

Lafayette: 337-837-8616

Houston: 713-328-2673

[www.corelab.com](http://www.corelab.com)

## SURVIVOR™

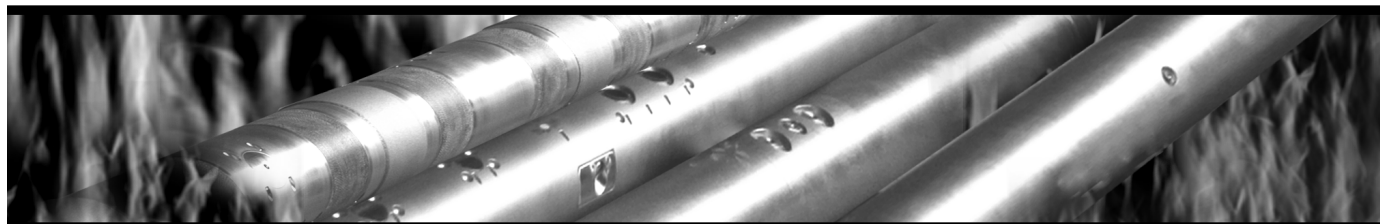
### LOGGING-WHILE-DRILLING SUITE

The SURVIVOR™ Suite uses our highly reliable HDS-1 Directional Gamma Ray technology, Array Wave Resistivity tool, Slim Density Neutron Standoff Caliper tool and our Dynamic Pressure Module to create a complete system for logging in hostile drilling environments.

**Temperature Rating.....350°F (175°C)**

**Pressure Rating .....25,000 psi**

**Logging Capacity .....300+ circulating hours**



RELIABILITY. ACCURACY. VERSATILITY. WE DELIVER.

e-mail: [pfmarketing@pathfinderlwd.com](mailto:pfmarketing@pathfinderlwd.com)

[www.pathfinderlwd.com](http://www.pathfinderlwd.com)

© 2006 Pathfinder Energy Services, Inc. All rights reserved.

**PATHFINDER®**

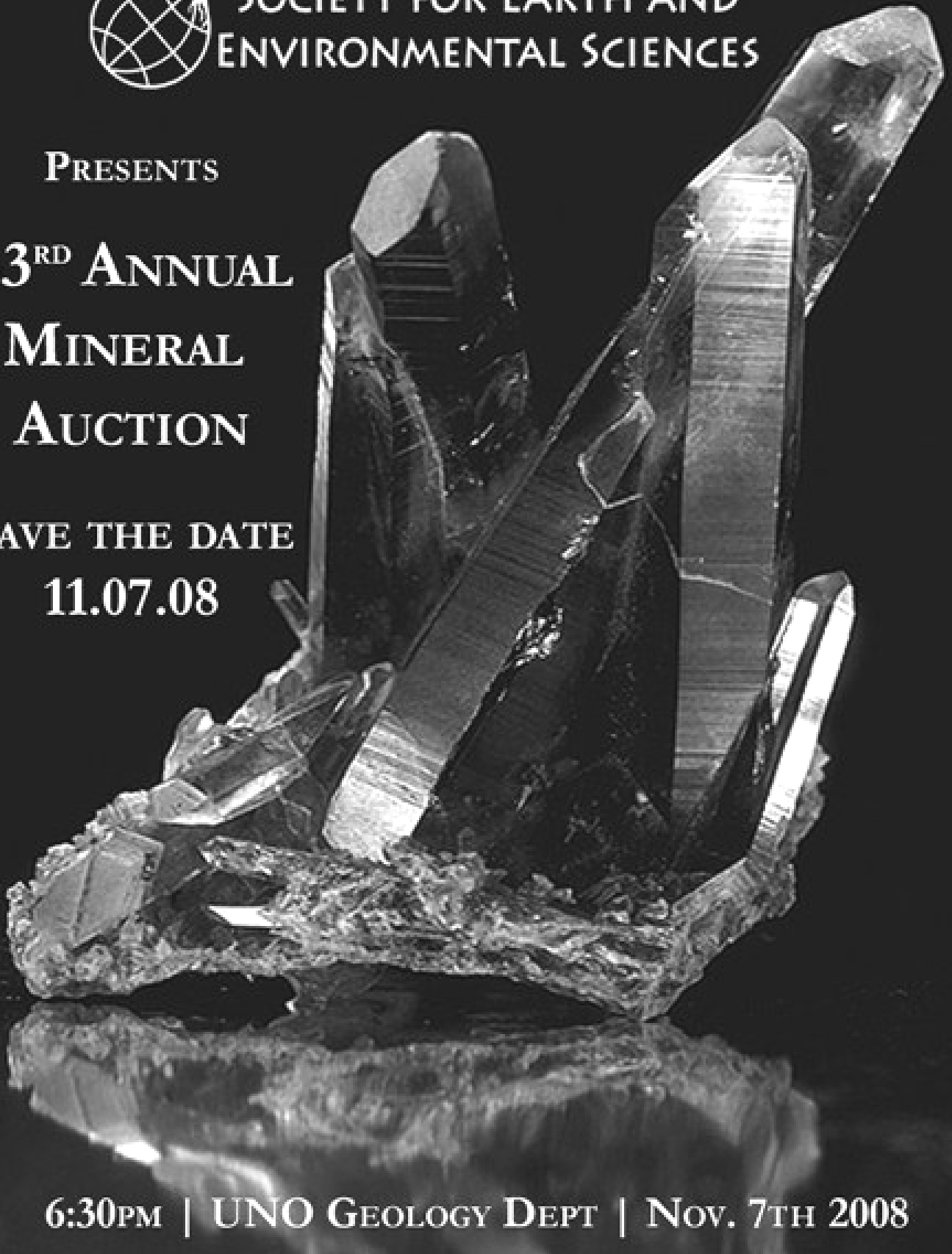


SOCIETY FOR EARTH AND  
ENVIRONMENTAL SCIENCES

PRESENTS

33<sup>RD</sup> ANNUAL  
MINERAL  
AUCTION

SAVE THE DATE  
11.07.08



6:30PM | UNO GEOLOGY DEPT | NOV. 7TH 2008

*Precise Data.*

*"Click"*

*Unlock the Potential of Your Reservoir.*

Today's reservoirs are more challenging than ever. To unlock their potential requires absolutely precise data. OMNI Laboratories has established higher standards, more thorough protocols, and meticulous quality control measures to ensure unsurpassed accuracy. Plus, we have assembled the finest scientists in the field to provide superior interpretation and analysis. When precise data is paramount, choose OMNI Laboratories.

*At OMNI, We've Got the Answers.*



13 LOCATIONS IN THE U.S., CANADA AND SOUTH AMERICA • HEADQUARTERS: HOUSTON, TX • 832-237-4000 • [WWW.OMNILABS.COM](http://WWW.OMNILABS.COM)

# THE NEW ORLEANS GEOLOGICAL SOCIETY MEMORIAL FOUNDATION, INC.

The Memorial Foundation is an IRS Tax Exempt Code #501 (c)(3) organization. The Federal I.D. is: 72-1220999. Please consider making your donation prior to the close of this year's fiscal cycle which is September 30, 2009. Your individual support in any amount will help meet the IRS Guidelines for our Foundation. *Thanks!*

## \$15,000 AND ABOVE

**Olga Braunstein Succession**  
**Gibbett Hill Foundation**  
*In Memory of Steve & Marion Millendorf,*  
*William J. Prutzman, Roger G. Vincent & Ron Youngblood*

## \$10,000

**The Booth-Bricker Fund**  
*In Memory of Richard W. Boebel*  
**George W. Schneider, Jr. and Family**  
*In Memory of George W. Schneider, Sr.*

## \$7,000 TO \$9,000

**GCAGS Matching Funds**  
**Paul C. McWilliams**

## \$3,000 TO \$4,000

**NOGS Golf Tournament May 2007**  
*In Memory of Bill Craig*

## \$1,000

**C & R Exploration, Inc.**  
*In Memory of Richard W. Boebel*  
**Thornton E. Anderson**  
*In Memory of Richard W. Boebel*

## \$500

**Carlo and Beverly Christina**  
*In Memory of Richard W. Boebel*  
**Joanne J. Clark and Family**  
*In Memory of Richard W. Boebel*  
**Joffre J. Crouere**  
*In Memory of Richard W. Boebel*

## \$2,000

**Bridwell Oil Company**  
*In Memory of Richard W. Boebel*

## \$250 TO \$499

**Carlo C. Christina**  
*In memory of Robey H. Clark*  
*In Memory of Al Gibeath*  
*In memory of Allen R. Stern*  
**Seismic Exchange, Inc.**  
*In Memory of Richard W. Boebel*  
**Carol and Gilbert St. Germain**  
*In Memory of Richard W. Boebel*

## UP TO \$249

**John Edward Allen, Jr.**  
**Don and Carol Andrews**  
*In Memory of Thomas H. Philpott*  
*In Memory of William B. Rodan*  
**Donald I. Andrews**  
*In Memory of T. Wayne Campbell*  
**Robert J. Ardell**  
*Memory of Richard W. Boebel*  
**Peggy and Robert Armstrong**  
*In Memory of Richard W. Boebel*  
**Bruce Bahlinger**  
*In Memory of Thomas H. Philpott*  
**Jack R. Bantari**  
**Abraham Biadgelgne**  
**Maurice N. Birdwell**  
*In Memory of Jim Davis*  
**Hilary James Brook**  
**Robin A. Broussard**  
*In Memory of Charles L. Jones*  
*In Memory of Thomas H. Philpott*  
**Jack G. Bryant**  
**Rob Burnett**

**Chevron**  
*Matching Funds*  
**Arthur F. Christensen**  
**Ellen F. Clark**  
**James S. Classen**  
*In Memory of All Gibeath*  
**Clarence F. Conrad**  
**Charley and Trudy Corona**  
*In Memory of Mary Kirk Barrell*  
**Charley Corona**  
*In Memory of Charles L. Jones*  
*In Memory of McLain Forman*  
*In Memory of Richard W. Boebel*  
**Michael A. Danahy**  
**M. R. "Bob" Douglass**  
**Merle J. Duplantis**  
**George H. Evans**  
**Exxon Mobil Matching Funds**  
**Michael N. Fein**  
**Mark J. Gallagher**  
**David Garner**  
**Peter G. Gray**

# FONO FUND

The FONO Fund accepts contributions that are invested and the income dedicated to assure sufficient financial resources will always be available to maintain the NOGS business office. Contributors are reminded that donations to the FONO Fund are not covered by the IRS 501 (c)(3) tax exempt classification and should be reported as a business expense on your IRS tax report.

## \$600

**Richard W. Boebel**  
**Willis E. Conatser**

## \$500

**James A. Hartman**  
*In Memory of Robert W. Boebel*  
*In Memory of Robert W. Sabate'*

## UP TO \$249

<b>Woods W. Allen, Jr.</b>	<b>Owen R. Hopkins</b>
<b>Donald I. Andrews</b>	<b>Thomas A. Hudson</b>
<b>Alfred H. Baker Jr.</b>	<b>Kenneth Huffman</b>
<b>Philip Beron, Jr.</b>	<b>Paul Jurik</b>
<b>Joseph E. Boudreaux</b>	<b>Tom Klekamp</b>
<b>Cynthia A. Bradford</b>	<b>Richard G. Klibert</b>
<b>Eric C. Broadbridge</b>	<b>William J. Malin</b>
<b>Hillary James Brook</b>	<b>Jeannie F. Mallick</b>
<b>Jack G. Bryant</b>	<b>George M. Markey, Jr.</b>
<i>In Memory of Shelby W. Smith</i>	<b>Louis L. McCormick</b>
<b>J. Sybil Calloway</b>	<b>Robert H. Monahan</b>
<b>Anthony Carollo Jr.</b>	<b>Robert G. Murphy</b>
<b>Arthur F. Christensen</b>	<b>William J. O'Leary</b>
<b>James S. Classen</b>	<b>Richard A. Olsen</b>
<b>Richard P. Colomes</b>	<b>Linda and Bill Peirce</b>
<b>Clarence F. Conrad</b>	<b>Edward B. Picou, Jr.</b>
<b>Joffre J. Crouere</b>	<i>In Memory of Robert W. Sabate'</i>
<b>John Dombrowski</b>	<b>Jaser N. Rafidi</b>
<b>Merle J. Duplantis</b>	<b>James P. Raymond, Jr.</b>
<b>Richard A. Edmund</b>	<b>Brenda E. Reilly</b>
<b>Parrish N. Erwin, Jr.</b>	<b>C. R. Rondeau</b>
<b>Niles R. Faulk</b>	<b>Monte C. Shalett</b>
<b>Michael N. Fein</b>	<b>Rudolf B. Siegert</b>
<b>Laurens Gaarenstroom</b>	<b>Raymond Stephens</b>
<b>Mark J. Gallagher</b>	<b>Stephen Szydluk</b>
<b>Arthur J. Garden</b>	<b>Scott A. Wainwright</b>
<b>Duncan Goldthwaite</b>	<b>Roy C. Walther</b>
<b>Peter G. Gray</b>	<b>Arthur S. Waterman</b>
<b>James A. Hartman</b>	<b>Robert C. Weissmann</b>
<i>In Memory of Brian J. O'Neill</i>	<b>Louis E. Willhoit, Jr.</b>
<b>Bernard L. Hill, Jr.</b>	<b>James W. Yeldell Jr.</b>
	<b>Jim Zotkiewicz</b>

CONTRIBUTIONS FOR BOTH FUNDS  
THROUGH OCTOBER 15, 2008.  
DONATIONS ARE LISTED FOR ONE YEAR.

**Bernard L. Hill, Jr.**  
*In Memory of Robert E. Osborne*  
**Owen R. Hopkins**  
**Dan E. Hudson**  
**Thomas A. Hudson**  
**Kenneth Huffman**  
**Thomas E. Johnson**  
**Tom Klekamp**  
*In Memory of Robert W. Sabate'*  
**John C. Kucewicz, Jr.**  
**Russell J. Landry**  
*In Memory of Ken Savage*

**William J. Malin**  
**Jeannie F. Mallick**  
**David C. Mount**  
**Robert G. Murphy**  
**New Orleans Geological Auxiliary**  
*In Memory of Mary Kirk Barrell*  
**Russell H. Nordwell**  
**Richard A. Olsen**  
*In Memory of Richard W. Boebel*  
*In Memory of Robert W. Sabate'*

---continued on page 30---



A  
whole  
new  
center  
of  
**gravity**  
and  
**magnetic**  
services.

## **Discover the New Fugro Gravity & Magnetic Services.**

Now, the full spectrum of potential field products and services is available from a single source: Fugro Gravity & Magnetic Services. Fugro Gravity & Magnetic Services has more than 50 years of land, marine and airborne oil and gas exploration experience, providing geologic solutions, enhancing seismic data and improving drilling efficiency. And, all delivered by 600 professionals around the world. For cost-effective exploration risk reduction, depend on Fugro Gravity & Magnetic Services, a whole new center of gravity and magnetic services.

Acquisition • Processing • Interpretation • Software • Non-Exclusive Data



**Gravity Inspired. Magnetically Inclined.**

[www.fugro-gravmag.com/solutions](http://www.fugro-gravmag.com/solutions)



**Shoreline Gas Inc.**  
[www.shorelinegas.com](http://www.shorelinegas.com)  
 Full Service Natural Gas Marketing

*This advertising space is  
 available! Contact the  
 NOGS office.*



**Collarini Energy Staffing Inc.**

Full-Time and Temporary  
 Exploration and Production Personnel

Facilities · Drilling · Production · Reservoir Engineers  
 Landmen · Geoscience · Information Technology  
 Health and Safety · Management · Procurement  
 Accounting · Administrative Support

Houston and New Orleans  
 (832) 251-0553 · Fax (832) 251-0157  
[www.collarini.com](http://www.collarini.com)

**Connecting the Industry's Experts**



**Collarini Associates**

4200 South I-10 Service Road, Suite 230  
 Metairie, Louisiana 70001  
 (504) 887-7127  
 (504) 887-7162

Reservoir Engineering  
 Oil & Gas Property Evaluation  
 3-D Seismic Interpretation  
 Integrated Field Studies

New Orleans ■ Houston  
[www.collarini.com](http://www.collarini.com)



625 E. Kaliste Saloom  
 Lafayette, La 70608

18900 Greenspoint Dr, Suite 225-S,  
 Houston, Tx 77060

[www.StoneEnergy.com](http://www.StoneEnergy.com)



**CIMAREX ENERGY CO.**

GULF OF MEXICO REGION  
 GOM, SE La., N. La., MS, AL

1100 Poydras St.; Suite 1100

New Orleans, Louisiana 70163

504-586-1815 / Fax 504-586-9035

Keith Gourgues

Region Manager

(832) 242-6000 (O)  
 (713) 917-0493 (O)

(504) 931-7506 (C)  
[johnjurasin@jurasinoilgas.com](mailto:johnjurasin@jurasinoilgas.com)

## **NORTHCOAST OIL COMPANY**

610 E. Rutland St.  
 Covington, LA 70433  
 (985) 898-3577  
 (985) 898-3585 FAX


Jack M. Thorson  
 Eric C. Broadbridge  
 J. Daryl Gambrell  
 Raymond W. Stephens

## **JURASIN OIL & GAS**

9700 Richmond Ave., Suite # 124  
 Houston, TX 77042-4821

JOHN M. JURASIN  
 President

Cert. Pet. Geologist #4284  
 Cert. Prof. Earth Scientist #1961

<b>ANSYTHE</b> <b>Donald I. Andrews</b> 504-887-3432 	<b>D-O-R ENGINEERING, INC.</b> <b>3-D and Geoscience Services</b> 120 Oil Center Dr., Bldg. 12 P.O. Box 51707, Lafayette, LA 70505 Bus. (337) 233-2378 Fax (337) 233-2907
<b>THE BOEBEL COMPANY</b> <b>Oil and Gas Investments</b> 170 Broadway Street, Suite 321 New Orleans, LA 70118 (504) 866-4313	<b>EDWARD B. PICOU, JR.</b> <b>Consulting Micropaleontologist - Retired</b> 228 St. Charles Ave., Suite 1330 C New Orleans, LA 70130 Bus. (504) 529-5155 Res. (504) 282-3096
<b>BOO-KER OIL &amp; GAS CORP.</b> <b>Gray S. Parker</b> 826 Union, Suite 300 New Orleans, LA 70112 Bus. (504) 581-2430 Fax (504) 566-4785	<b>H. WARREN BELL</b> <b>Oil and Gas Exploration</b> 2500 Tanglewilde, Suite 485 Houston, TX 77063-2126 Bus (713) 266-7297 Fax (713) 266-7298
<b>C &amp; R EXPLORATION, INC.</b> <b>Carlo C. Christina</b> <b>Lawrence G. Ringham</b>	<b>PHELPS GEOSCIENCE</b> <b>Onshore Gulf of Mexico Geology and Geophysics</b> <b>Prospect Generation and Evaluation</b> Houston, TX jsfphelps@yahoo.com (281) 398-5208
<b>C. R. RONDEAU</b> <b>Petroleum Geologist</b> 119 W Southland Ave. Ironwood, MI 49938 Res. (906) 932-4692	<b>RAFIDI OIL AND GAS, INC.</b> <b>Jaser N. Rafidi, President</b> 4415 Shore Dr., Suite 202 Metairie, LA 70006 Bus. (504) 722-2942 Fax (504) 888-5539; Res. (504) 888-1661
<b>CLASSEN EXPLORATION, INC.</b> James S. Classen Looking for close in deals P.O. Box 140637 Boise, ID 83714 classenllc@msn.com Bus. (208) 854-1037 Fax (208) 854-1029	<b>ROY C. WALTHER</b> <b>Petroleum Geologist</b> 2421 Prancer Street New Orleans, LA 70131 Bus. (504) 392-8513 Res. (504) 392-9332
<b>COLLES C. STOWELL</b> <b>Oil and Gas Consultant</b> 22 Sea St. Manchester, MA 01944 (978) 526-1286	<b>TONY CAROLLO</b> <b>Consulting Geologist</b> Unitization Geosteering Field Studies 1701 Peach Street Metairie, LA 70001 Bus. (504) 885-0004 Res. (504) 885-6829

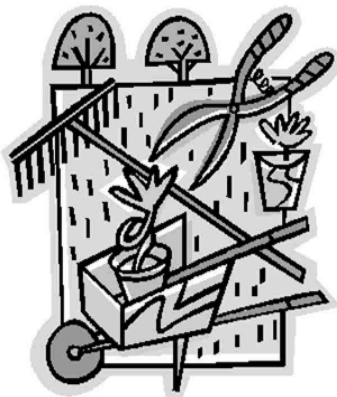
### Memorial Fund donations, continued from page 27:

William S. Peirce  
Edward B. Picou Jr.  
*In Memory of Richard W. Boebel*  
*In Memory of Dr. M. Gordon Frey*  
*In Memory of Brian J. O'Neill*  
Jaser N. Rafidi  
Edmund L. Russell  
*In Memory of Francis X. Bland*  
Robert C. Shoup  
Rudolph B. Siegert  
*In Memory of Richard W. Boebel*

Dr. J. O. Snowden  
Raymond O. Steinhoff  
*In Memory of Robert S. Wood*  
*In Memory of Harold E. Voke*  
Stephen Szydlak  
Patrick F. Taylor Foundation  
Employee Matching Gifts Program  
Scott A. Wainwright  
Roy C. Walther  
William M. Whiting

Whitney National Bank Officers  
and Directors  
*In Memory of Richard W. Boebel*  
Louis E. Willhoit, Jr.  
Armour C. Winslow  
*In Memory of Rita Menzel Winslow*  
Frances A. Wiseman  
*In Memory of Steve Widdicombe*  
Jim Zotkiewicz

*In Memory of Bill Craig*  
Robin A. Broussard  
Chevron  
M. R. "Bob" Douglass  
Bernard L. Hill, Jr.  
Jeff Jandegian  
John C. Scheldt  
Candace V. Strahan  
*In Memory of James Strahan*



## November 8 - Super Volunteer Day 9:00am-Noon at City Park

Volunteers are invited to meet in front of Storyland at 9:00 a.m. Work assignments and tools will be handed out at that time. Last year NOGS installed the lighting for Celebration in the Oaks. This year work may include pruning, raking, cutting grass, picking up trash, and planting. Please dress appropriately for the season and bring your own garden gloves, sunscreen, and insect repellent, along with any food and drink you wish to consume. Since we don't know how many volunteers will show up each week, please bring yard tools if you have them. No chainsaws!

# PGS. Clearly Better.

Crystal continues...

## Wide Azimuth Multi-Client 3D

- » 580 deepwater Gulf of Mexico blocks
- » Ramform technology and efficiency advantages
- » Proven portfolio of Wide Azimuth data processing technologies
  - » Full Azimuth Tomography
  - » 3DSRME
  - » Pre-stack Depth Migration
    - » Kirchhoff
    - » WEM
    - » Beam
    - » RTM

Oso  
Tel: 47-67-52-6400  
Fax: 47-67-52-6464

London  
Tel: 44-1932-260-001  
Fax: 44-1932-266-465

Houston  
Tel: 1-281-509-8000  
Fax: 1-281-509-8500

Singapore  
Tel: 65-6735-6411  
Fax: 65-6735-6413

**A Clearer Image**  
[www.pgs.com](http://www.pgs.com)



# SEE YOUR DATA IN A WHOLE NEW LIGHT!

Take the pressure out of exploration and drilling by seeing what you are going to encounter.

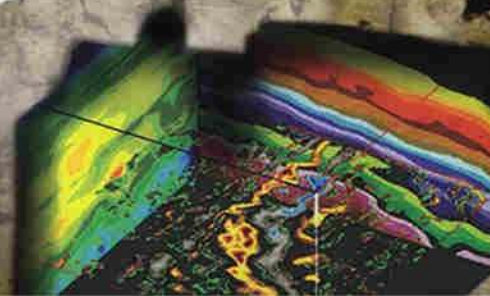


**eSeis**

[www.e-seis.com](http://www.e-seis.com)

713.531.1447

- Lithology & Fluids
- Depositional Facies
- Pore Pressure from V & Q
- Well Planning Consultation



## MARINE PROPERTIES, LLC BERKSHIRE EXPLORATION CO.

MONTE C. SHALETT, CPL, PRESIDENT

3030 Lausat Street  
Metairie, LA 70001-5924

BUS. (504) 831-7779  
FAX. (504) 831-8315

# WWW.NOGS.ORG

## NEW ORLEANS GEOLOGICAL SOCIETY

810 Union Street, Suite 300  
New Orleans, LA 70112-1430



**PCI**

**Paleo Control, Inc.**

Houston, Texas  
713-849-0044

Drilling Wells, Studies and Data Base

Loyd Tuttle

Frio, SE Texas

Bob Liska

Wilcox, S and SE Texas

Jim Thorpe

Miocene and Cam-Miogyp

