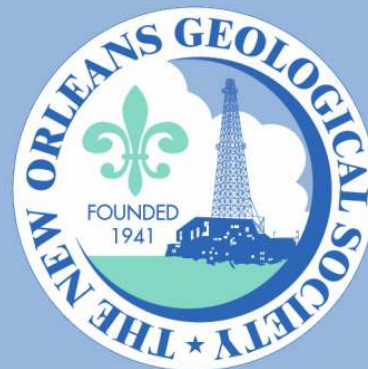


NOGS LOG



December 2008

Volume 49, Number 6

Upcoming Events and Activities

December 1 - NOGS/SGS Joint Luncheon

*** At the Holiday Inn Downtown Superdome ***

Free validated parking in hotel garage

Guest speaker Brian Lock, University of Louisiana at Lafayette, will speak about the Imperial Barrel Competition – with students present.

(See page 7 for Abstract and Biography)

HOLIDAY INN DOWNTOWN SUPERDOME

ADMISSION:

Check with concierge or
front desk for location

Lunch served at 11:30am

with reservation \$30.00

without reservation \$35.00

Student Member with reservation Free

December 7-9 - 28th Annual GCSSEPM Foundation

Bob F. Perkins Research Conference

In Houston. "Answering the Challenges of Production from Deep-Water Reservoirs: Analogues and Case Histories to Aid a New Generation." See announcement on page 8.

December 12 - NOGS Holiday Party

Cannon's Restaurant, 4141 Saint Charles Avenue. See announcement on page 13.

January 5 - NOGS Luncheon

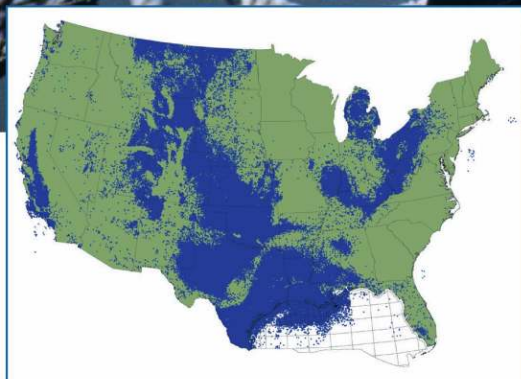
Guest speaker Susan Humphris, Woods Hole Oceanographic Institution and AAPG Distinguished Lecturer, will present "Relation Between Volcanism, Tectonism and Hydrothermal Activity Along the Global Mid-Ocean Ridge System."

February 2 - NOGS Luncheon

Guest speaker Dr. Michael Hudec, Texas Bureau of Economic Geology will present "Episodic Advance of the Sigsbee Salt Canopy, Deepwater Gulf of Mexico."

Introducing

LASSO



Lasso up all the digital LAS well log data you need from the industry's largest collection

With LASSO, lock in TGS' program rates on digital LAS well data from our US collection, growing at an unprecedented pace to more than 500,000 wells over the next several months. LASSO strengthens your exploration projects with the higher-order capabilities of increased digital well log use. LASSO digital data from TGS, the industry's well log data leader, is quality controlled and available online for immediate downloads.

For more information about LASSO, contact your TGS account representative or call 1- (888) LOG-LINE.



Geophysical
Products



Geological
Products



Imaging
Services

www.tgsnopec.com

NORWAY +47 66 76 99 00 | USA +1 713 860 2100 | UK +44 (0) 1234 272122 | AUSTRALIA +61 8 9480 0000

© TGS-NOPEC Geophysical Company. All rights reserved.

NOGS Office

Office Manager: Annette Hudson

Office Hours: 8:30am – 3:30pm on Monday-Wednesday-Friday

Tel: 504-561-8980 □ Fax: 504-561-8988

E-mail: info@nogs.org □ Website: www.nogs.org

The office is located at Suite 300, 810 Union Street, New Orleans, LA 70112.

Correspondence and all luncheon reservations should be sent to the above address.

Sent to press on November 26, 2008.

**BOARD OF DIRECTORS**

		Company	Phone	E-mail
President	William M. Whiting	Consultant	504-947-8495	bootscon@aol.com
Vice President	Allan Melillo	Chevron	985-773-6756	ajme@chevron.com
Secretary	Frances Wiseman	MMS	504-736-2912	frances.wiseman@mms.gov
Treasurer	James Swaney	MMS	504-736-2677	james.swaney@mms.gov
President-Elect	Tom Klekamp	Amber Resources LLC	985-845-4046	klekamp@bellsouth.net
Editor	Michael D. Miner	UNO	504-280-3866	mminer@uno.edu
Director 2009	Willis E. Conatser		504-469-2496	weconatser@aol.com
Director 2010	Michael M. Ledet		504-394-9636	mikeledet@cox.net
Director 2011	Scott A. Wainwright	Bret Exploration Co Inc	504-889-2700	scott_wainwright@hotmail.com

COMMITTEE

	Chairperson			
AAPG Delegates	Dave Balcer	Chevron	985-773-6725	dbalcer@Chevron.com
AAPG Student Chapter	Bobby Cosentino	Tulane University	504-495-9475	rcosenti@tulane.edu
AAPG Student Chapter	Bryan Rogers	UNO	504-736-2772	thgem@gmail.com
Advertising-Log	Jennifer Connolly	Shell	504-728-6411	jennifer.connolly@shell.com
Auditing	J. David Cope	Ankor Energy	504-596-3672	dcope@ankorenergy.com
Awards	Michael N. Fein	W & T Offshore	504-210-8148	mikef@wtoffshore.com
Ballot	James Swaney	MMS	504-736-2677	james.swaney@mms.gov
Best Paper	David E. Reiter	Energy Partners Ltd	985-893-8072	dreiter@eplweb.com
Continuing Education	TBA			
Employment Counseling	Paul J. Post	MMS	504-736-2954	paul.post@mms.gov
Entertainment	Tom Klekamp	Amber Resources LLC	985-845-4046	klekamp@bellsouth.net
Environmental	Daisy Pate	Eustis Geotechnical Eng.	504-613-5798	dpate@eustiseng.com
External Affairs	Michael A. Fogarty	Sylvan Energy, LLC	603-523-4808	mike.a.fogarty@gmail.com
Field Trip	David Garner	Shell	504-728-6154	David.Garner@shell.com
Finance and Investment	James Swaney	MMS	504-736-2677	james.swaney@mms.gov
Historical	Edward B. Picou, Jr.	Consultant	504-529-5155	epicou@bellsouth.net
Membership/Directory	Penne Rappold	Shell	504-728-4338	prappold@gmail.com
New Geoscientists (NGNO)	TBA			
Nominating	Alfred H. Baker, Jr.	Beacon Exploration, LLC	504-836-2710	abaker1006@aol.com
Non-Technical Education	Duncan Goldthwaite	Consultant	504-887-4377	DGldthwt@aol.com
Office Operations	Arthur H. Johnson	Hydrate Energy International	504-464-6208	artjohnson51@hotmail.com
Publications Sales	Edward B. Picou, Jr.	Consultant	504-529-5155	epicou@bellsouth.net
Photography	J. David Cope	Taylor Energy Co LLC	504-589-0419	dcope@taylorenergy.com
School Outreach	Thomas C. Bergeon	Century Exploration	504-832-3772	Tom.bergeon@centuryx.com
Scouting	Carol Rooney	Consultant Geologist	504-835-1909	carolbrooney@aol.com
Technical Projects	TBA			
Ad Hoc Committee on				
University Support	Michael J. Gallagher	Eni Petroleum	504-593-7480	Michael.Gallagher@enipetroleum.com

NOGS LOG STAFF

Editor	Michael D. Miner	UNO	504-280-3866	mminer@uno.edu
Editor-Elect	Elizabeth Petro	MMS	504-736-2866	liz.petro@mms.gov
Auxiliary	Susie Baker	NOGA	504-466-4483	abaker1006@aol.com
Info Tidbits	Clare Falcon	Schlumberger	504-592-5385	cfalcon2@new-orleans.oilfield.slb.com
Drill Bits	Paul J. Post	MMS	504-736-2954	paul.post@mms.gov
Webmaster	Jannette Sturm-Mexic			webmaster@nogs.org

NOGS AUXILIARY

Officers		Phone	Directors	Year	Phone
President	Linda Peirce	504-393-7365	Ruth Ingram	2008-09	504-887-5404
1st Vice-President	Jean Jones	504-738-8091	June Perret	2008-09	504-881-9357
2nd Vice-President	Beverly Kastler	504-286-0879	Joan Sylvester	2008-09	504-738-2934
Secretary	Dolores Murphy	504-393-0878	Beverly Christina	2009-10	504-835-2383
Treasurer	Judy Lemarie'	504-393-8659	Peggy Rogers	2009-10	504-392-6323
Parliamentarian	Carol Andrews	504-887-3432	Judy Sabate'	2009-10	504-861-3179
Member-at-Large	Susie Baker	504-466-4483			

--- NOGS Contact List continued on page 10 ---

Higher Standards



Weatherford LABORATORIES

At Weatherford Laboratories, we hold fast to Higher Standards. Our purpose is to continually push past conventional solutions to find new and better ways to optimize oil and gas production.

■ By integrating seven entrepreneurial companies, we bring unsurpassed innovation to the industry. Our accomplishments include 50 new technologies, 45 original products, 35 industry awards, and 13 registered patents. Among our ranks are several luminaries of the industry, as well as scores of respected scientists who have authored hundreds of technical papers. ■ With 38 laboratories around the globe, our team raises the bar for wellsite sampling, core management services, geochemical analyses and evaluation of unconventional reservoirs.

At Weatherford Laboratories, we expect more from ourselves so you can expect more from us.

Weatherfordlabs.com

7
DYNAMIC
COMPANIES

50
NEW
TECHNOLOGIES

38
WORLDWIDE
LABORATORIES

CORPORATE OFFICES

ACS Laboratories Pty Ltd
Brisbane, Australia

OMNI Laboratories
Houston, Texas USA

ResLab Reservoir Laboratories
Trondheim, Norway

Humble Geochemical Services
Houston, Texas USA

TICORA Geosciences
Denver, Colorado USA

Baseline Resolution, Inc.
Houston, Texas USA

Hycal Energy Research Laboratories
Calgary, Alberta, Canada



from the President

This being the last President's letter of 2008, the NOGS Board, Staff, and I would like to thank every member for their support during the past year and wish them the best for the coming Holidays and a happy, prosperous 2009. Take some time to be good to yourself; read a book, attend a play, take a trip, or participate in a seminar.

Our October 18th field trip was a great success with plenty of positive feedback. Sorry for our no-shows and kudos to our participants. Field trip leaders were Kathy Haggard (Riparian, Inc.) and Woody Gagliano (Coastal Environments, Inc.). Additional lecturers were Arviel Touchet (retired State Soil Scientist), Dr. Roy Dokka (LSU), and Rick McCulloh (LGS). Thanks especially to Tom Klekamp for help on the guide books and trip logistics, Dave Garner for food and organizational logistics, and, of course, Annette for reservations. I visited parts of Louisiana that were totally new to me (Goose Point, Maurepas, French Settlement, and Alligator Bayou, just to name a few). I talked to one of the K-12 teachers from Lafourche Parish and was surprised to learn she is the only certified science teacher in her parish and that there is no money in the budget this year to teach science. She has inherited geologic data from a professor moving on from Nicholls State, but could use some help organizing it. The guide books are being re-edited and the possibility exists for the addition of notes from our lecturers. Any new pages will be sent to the participants. We hope to publish the guidebooks so that members that were unable to attend can purchase them as well as any interested non-members. The books are packed with information and the handy guide can be used by anyone wishing to make the trip on their own. The trip ended at Alligator Bayou and one friendly "gator" aboard the cruise boat seemed to adopt one of our participants, Allen Lowrie, much to his delight.

The November 3rd luncheon was held at the Holiday Inn with the topic by Jack Pashin "CO2

enhanced Oil Recovery Program at Citronelle Field." This was our fourth successful program broadcast to the north shore.

Our third volunteer workday at City Park was held on November 8th. Thanks to Tom Klekamp for heading up this worthwhile and quite fun project. Much of City Park's recovery has been at the hands of volunteers.

I represented NOGS at the API's joint Societies Presidents Luncheon. The Horizon Initiative is moving forward (program involving professional organizations helping the City's recovery). A possible initiation of a NEO young professional group is being considered by the SPE and would be open to all young professionals. NOGS had this several years back but it has since fallen by the wayside. More as this evolves.

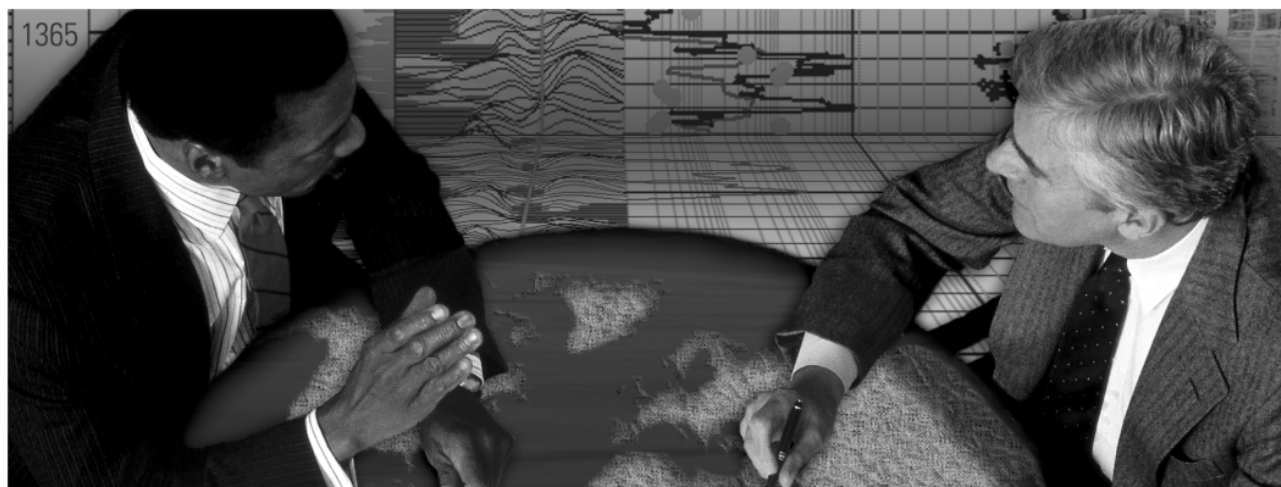
The Holidays are just around the corner so please make sure to reserve December 12th for the annual NOGS Holiday/Christmas Party. Tom Klekamp has us returning to Cannon's on St Charles Avenue. A good time was had by all last year at Cannon's and this will be as good if not better.

The survey results for GCAGS 2011 in Vera Cruz were 70% will not attend and 30% would or might attend. Some felt this was too early to make a decision, but the GCAGS Planning Committee needed some input from the member Societies.

Schools are open and back on schedule. VOLUNTEER for one of our outreach programs such as science fair judges or mentors (contact the NOGS office or Mike Fein). A Tapestry of Time and Terrain maps as well as rock and mineral sets are available at the NOGS Office. The Imperial Barrel Awards program is kicking off (contact the NOGS office or Art Johnson). Your participation is really appreciated. AAPG 2010 is just around the corner; contact Tom Hudson or Dr. Nancye Dawers to VOLUNTEER.

Bill

Schlumberger formation evaluation solutions deliver the answers you need. Our extensive portfolio of services, leading-edge technology, and advanced conveyance options keep you in communication with your well throughout its life cycle.



With formation evaluation technologies from Schlumberger, you can make the best decisions for optimized performance in every well.

The formation evaluation one-stop shop

Whether you are logging in open hole or behind the casing, our broad selection of services ensures the best solution for acquiring formation evaluation data. Tools can be conveyed while drilling or on wireline or pipe. We offer many specialized evaluation capabilities, from density, neutron porosity, and resistivity to borehole imaging, nuclear magnetic resonance logging, borehole seismic, formation pressure testing, and fluid sampling. Advanced triple-combo logging options include the VISION* formation evaluation and imaging-while-drilling services. Coupled with Pulse* telemetry and surveying services, the VISION family provides real-time formation evaluation data and enables optimum well placement.

High-speed wireline measurements are recorded with the Platform Express* logging services. The SlimXtreme* platform is designed for high-pressure, high-temperature environments and the ABC* Analysis Behind Casing services are used after casing is set.

Expert interpretation from the engineers and geoscientists of Schlumberger Data & Consulting Services brings all your data together to give you the answers you need. This expertise is available after logging is complete or as real-time two-way wellsite communication through the InterACT* real-time monitoring and data delivery system.

Schlumberger delivers leading-edge technology and interpretation expertise for all your formation evaluation needs, so every well benefits from the very best information.

For more information visit
www.slb.com/oilfield/formation_evaluation/

*Mark of Schlumberger

04-FE-114

Schlumberger

December 1 NOGS Luncheon Presentation

*** at the Holiday Inn Downtown Superdome ***

The AAPG's Imperial Barrel Student Competition

presented by

Brian Lock & UL Team Members

University of Louisiana at Lafayette

ABSTRACT

The Imperial Barrel Award competition (IBA) has been developed by the American Association of Petroleum Geologists (AAPG) to encourage student experience in a realistic and competitive petroleum industry setting. Schools that elect to participate are provided with a comprehensive data set from a sedimentary basin or sub-basin and asked to evaluate the potential. Teams of five students, preferably at the M.S. level, receive the data early in January and present their findings at a regional or sectional competition in March. Each regional winner competes again at the AAPG's annual convention. The data typical include 2-D seismic lines, 3-D coverage, well logs from at least some of the wells, core analyses, pressure data - in short the same spread of data that would be available to an exploration team from a major oil company. The object is to imitate the company setting as closely as possible, with a faculty advisor filling the role of "exploration manager."

The University of Louisiana at Lafayette opted to field a team for the 2008 competition - the first time the competition was open to interested schools. In 2007, a trial run had been conducted with a small number of invited schools. The UL team was provided data from the Viking Graben, Norwegian North Sea and was successful

in winning the Gulf Coast Section (GCAGS) competition. At the competition, held in Houston, each team member was required to present part of the report, for a total time allowed of 25 minutes. Three professional geologists judged the structural and stratigraphic analysis and proposals, which included a number of ranked leads and prospects with recommendations to purchase some existing seismic data in critical areas and to drill wells. At the AAPG convention, the competition included 14 teams from national AAPG sections and international regions, divided into two groups, with three teams from each group repeating their presentations on the second day. The UL team survived to the second day and finished sixth overall.

The experience was incredibly valuable for the students involved, both because of the geological interpretation required and because of the need to work together as a team. They put much effort into the task, typically spending six to eight hours per day for two months in the room set aside for the IBA, and the benefits were enormous. As the faculty advisor, I would strongly recommend other schools to participate; I know of no other experience that is comparable for preparing a student for a career in the petroleum industry.

BIOGRAPHY

Brian Lock is a Professor of Geology at the University of Louisiana at Lafayette. His degrees are from Cambridge University, and (in addition to 30 years at UL, 13 of them as Department Head), he has worked briefly for Norske Fina (consultant on a Barents Shelf project) and for Geoconsultants International in Metairie, as well as 8 years as a lecturer in South Africa (Rhodes University). He teaches short courses on carbonate sediments for

Subsurface Consultants and Associates in various international and North American venues. In 2006, AAPG recognized him with one of the Grover E. Murray Memorial Distinguished Educator Awards. He has served as an ex-President and committee member on the Board of the GCAGS for many years and was one of the GCAGS Outstanding Educator awardees in 1991.

THE LUNCHEON RESERVATION DEADLINE IS NOVEMBER 26 - CONTACT THE NOGS OFFICE

"And Looking Ahead..."

The next NOGS Luncheon will be January 5. Guest speaker Susan Humphris, Woods Hole Oceanographic Institution and AAPG Distinguished Lecturer, will present "Relation Between Volcanism, Tectonism and Hydrothermal Activity Along the Global Mid-Ocean Ridge System." Contact the NOGS office to make your reservation.



Answering the Challenges of Production from Deep-Water Reservoirs:

Analogues and Case Histories to Aid a new Generation

December 7-9, 2008

Marriott Westchase: Houston, TX

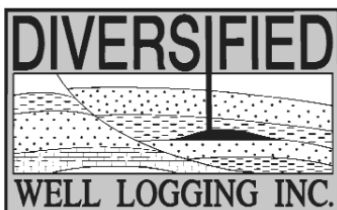
Information and registration are available
At our web site:

www.gcssepm.org



Relax. We'll keep you posted.

Your rig is offshore and you are not. How do you know what's going on so many miles away? You know because we tell you. Daily or even hourly, Diversified Well Logging's engineers update you on the status of your rig. We are your eyes and ears, especially when it comes to deep water or high pressure, high temperature areas. Diversified offers 24-hour surface evaluation. We provide secure and customized real-time data communication, in-house research and development and 24/7 on-call support for our equipment and our engineers. Whether you have a 10-day job or 110-day job, we provide the specialized attention you require. So, relax. We're with you every step of the way.



Serving the Gulf Coast for over 40 years.

New Orleans • Lafayette • Houston • Dallas • Corpus

800.280.2096

711 West 10th Street • Reserve, LA 70084 • Phone: 985.536.4143 • Fax: 985.536.2427
sales@dwl-usa.com



**PALEO
DATA**

**FULLY INTEGRATED AND
CENTRALIZED BIOSTRATIGRAPHIC
SERVICES**

- ▼ Single-source biostratigraphic databases
for increased accuracy and consistency
- ▼ Integrated foram / nannofossil analyses
- ▼ Complete wellsite paleo services
- ▼ In-house sample preparation
lab for quality-monitoring
and efficiency
- ▼ Sample pick-up service

6619 Fleur de Lis Drive
New Orleans, LA 70124
(504) 488-3711

www.paleodata.com

MCMORAN EXPLORATION CO.



MCMORAN OIL & GAS

www.mcmoran.com

NYSE: MMR

16676 Northchase Dr.
Houston, TX 77060
(281) 539-7600
Fax: (281) 539-7655

1615 Poydras
New Orleans, LA 70112
(504) 582-4000
Fax: (504) 582-4155

110 Travis St., Suite 140
Lafayette, LA 70503
(337) 735-9150
Fax: (337) 735-9151

NOGS CONTACT LIST

--- continued from page 3 ---

MEMORIAL FOUNDATION

BOARD OF TRUSTEES

		Company	Phone	E-mail
2008-09 Chairman	Arthur H. Johnson	Hydrate Energy International	504-464-6208	artjohnson51@hotmail.com
2008-09 Secretary	William M. Whiting	Consultant	504-947-8495	bootscon@aol.com
2008-09 Trustee	David E. Balcer	Chevron	985-773-6725	dbalcer@chevrontexaco.com
2008-09 Trustee	George T. Froming	Consultant	504-799-1918	gtfroming@yahoo.com
2009-10 Trustee	Michael C. Fauquier			
2009-10 Trustee	J. David Cope	Ankor Energy	504-596-3672	dcope@ankorenergy.com
2010-11 Trustee	Timothy J. Piwowar	Shell	504-728-4066	tim.piwowar@shell.com
2010-11 Trustee	Michael N. Fein	W & T Offshore	504-210-8148	mikef@wtoffshore.com

AAPG DELEGATES

Term Ends

		Company	Phone	E-mail
2009	David E. Balcer	Chevron	985-773-6725	dbalcer@Chevron.com
2009	William Whiting	Consultant	504-947-8495	bootscon@aol.com
2009a)	Nancye Dawers	Tulane University	504-862-3200	ndawers@tulane.edu
2009a)	David Cooke	MMS	504-736-2609	david.cooke@mms.gov
2011	Tom Hudson	Chevron	985-773-7163	tom.hudson@chevron.com
2011	Edward B. Picou, Jr.	Consultant	504-529-5155	epicou@bellsouth.net
2011a)	Brenda Reilly	Energy Partners Ltd.	504-799-4811	breilly@eplweb.com
2011a)	Robert Rooney	Century Exploration	504-832-3777	Robert.rooney@centuryx.com



Are You Interested in Global Climate Change?

H. Leighton Steward, long-time NOGS member and former CEO of the Louisiana Land and Exploration Company, has published an excellent book that lays out all of the “science” that bears on the issue. However, he makes no judgments. The text avoids technical terms as much as possible and has 39 excellent figures, plus a glossary and references. His book was reviewed in the October 2008 AAPG **EXPLORER** by Lee C. Gerhard.

Book copies may be ordered from:

www.authorhouse.com or 1-888-519-5121

Price: \$19.95 for a grayscale (B&W) version with soft cover, which is the default version if you order online. the color version is much easier to decipher. Best to phone and specify the color version, which is \$25.00, plus shipping and handling.

SEI®

Seismic Exchange, Inc.

**Strategic Speculative Surveys
Geophysical Data Marketing & Management**

Your
**Full Service
National
Seismic Data
Marketing Firm**

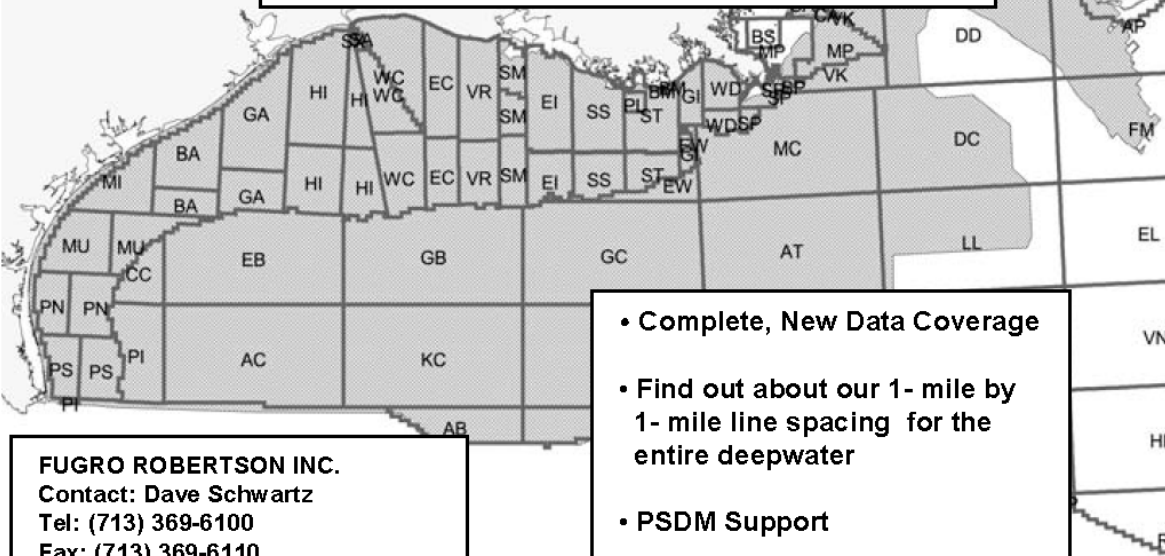
New Orleans
Dallas
Houston
Denver
Oklahoma City
Corpus Christi
Tulsa

201 St. Charles Avenue, Suite 4300, New Orleans, Louisiana 70170-4300
Telephone 504.581.7153 Fax 504.581.9591
www.seismicexchange.com

Robertson



**"The Place to Go"
For GOM Gravity Data and Interpretations**



FUGRO ROBERTSON INC.
Contact: Dave Schwartz
Tel: (713) 369-6100
Fax: (713) 369-6110
Email: infofri@fugro.com
www.fugro-lct.com

- Complete, New Data Coverage
- Find out about our 1- mile by 1- mile line spacing for the entire deepwater
- PSDM Support
- 3D Modeling



**100 Northpark Blvd.
Covington, LA 70433**

(985) 773-6000

"Serving the Oil & Gas Industry Since 1983"

Geological,
Geophysical &
Land Drafting

Anthony Catalanotto

President

Stefani Kelone

Drafting and Design



Geo-Draft, Inc.

A Professional Drafting & Graphics Firm

3349 Ridgelake Drive □ Suite 202 □ Metairie, LA □ 70002

Office: (504) 836-2882 Fax: (504) 836-2877

geodraft@bellsouth.net



LaBay
Exploration Co., L.L.C.

111 Veterans Memorial Blvd.,
Suite 1550
Metairie, Louisiana 70005

www.labayexploration.com

Office (504) 371-5967
Fax (504) 371-5969

***This advertising space is
available! Contact the
NOGS office.***

NOGS HOLIDAY PARTY



December 12, 2008

Cannon's Restaurant
4141 St. Charles Avenue
7-10 PM

Ample free parking behind Cannon's

Featuring Cannon's
famous reception buffet

Open bar
(Call brands downstairs at the cash bar)

Door prizes
1/2 and 1/2



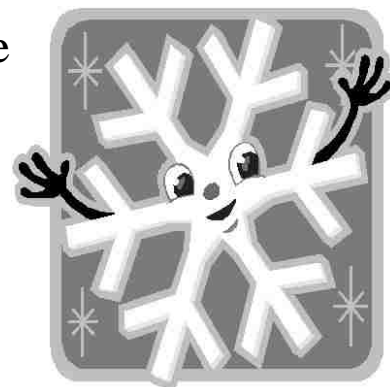
Cost:
\$40 per person



Open to NOGS, SIPES, etc. and guests

Reservations via the NOGS Office
561-8980

Email: info@nogs.org



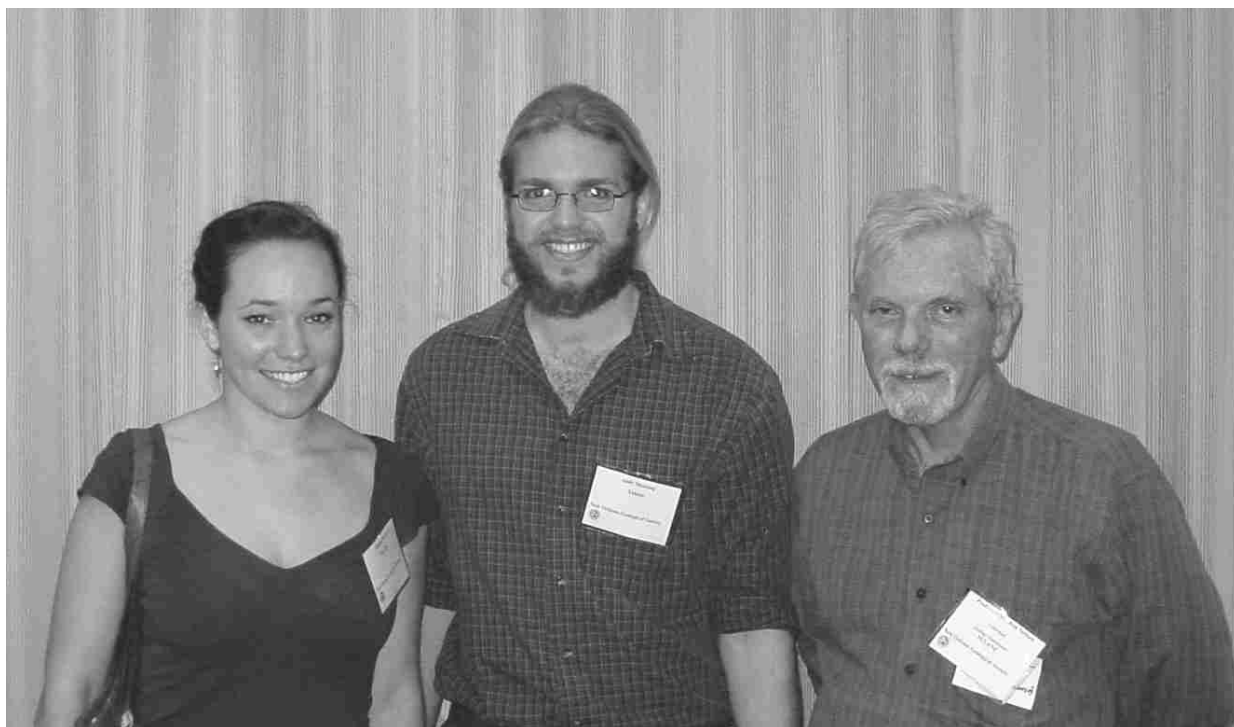


Scholarship Donor George Schneider (right) with Past President Art Johnson

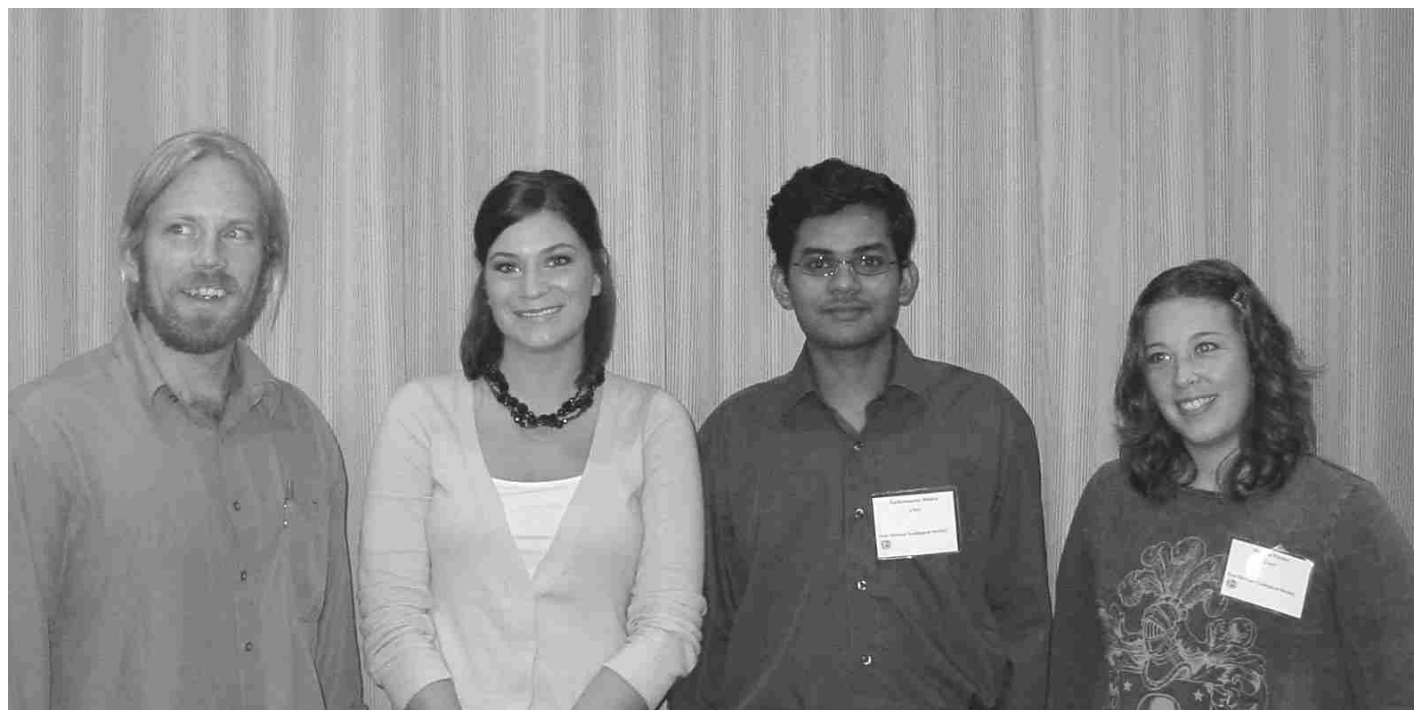


LSU Professor Jeffrey Nunn

October 13 NOGS Luncheon Presentation & Scholarship Awards



L-R Tulane Student Scholarship Recipients Josie Nevitt and James Menking and Dr. Steve Nelson (professor and Chair, Tulane Department of Earth and Environmental Sciences)



L-R: Dr. Mark Kulp (professor and Chair, UNO Department of Earth and Environmental Sciences) and UNO Student Scholarship Recipients Julie Torres, Sachidananda Mishra, and Kathryn Purifoy.



Luncheon Guest Speaker William Finley



President Bill Whiting



Past President Art Johnson

**New NOGS
Members
October and
November 2008**

Dane A. Fischer
Student-UNO
2000 Lakeshore Dr GP 1065
New Orleans LA 70148

Cecily S. Fogarty
Student - Tulane
5213 Coliseum St
New Orleans LA 70115

Robert D. Cosentino
Student-Tulane
201 Blessy Hall
New Orleans, LA 70118

James D. Libiez
Consultant
15 Keystone Dr. - Ste D
Hattiesburg, MS 39402
601-336-7003

Andrew J. Petty
Minerals Management Service
Geologist
1201 Elmwood Park Blvd
New Orleans, LA 70123
504-736-2709

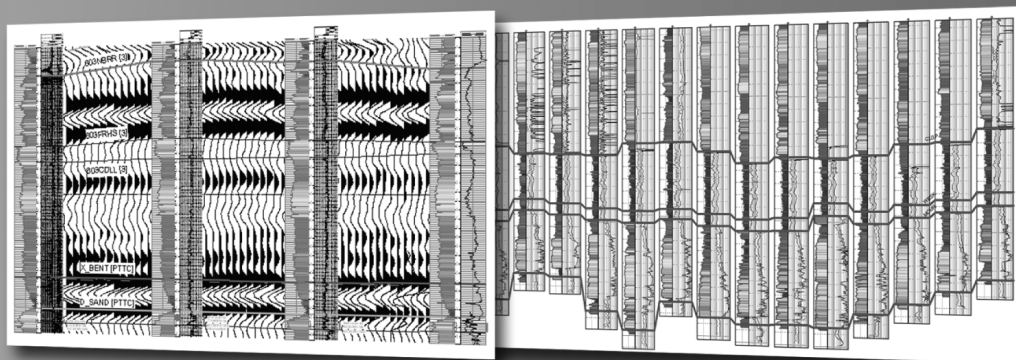
John H. Scheufler
Retired
Wayne St U, Geology, BS, 1952
Wayne St U, Geology, MS, 1954
Univ of Colorado, Geology,
PhD, 1972

Define your geological model faster than ever before

NO MORE WAITING! Available today from IHS, easy and affordable access to one of the largest U.S. digital log collections

- More than 185,000 LAS files with over 1.5 million curves
- Regional subscription packages for today's active play areas
- Indexed to IHS well and production data
- Linked to the IHS Enerdeq® Browser for quick regional studies and log selection
- Available via IHSLogNet.com or on DVD
- Ready to use in PETRA and other log packages

Request a free 2' x 3' IHS digital log coverage map at ihs.com/energy/DigitalLogs



Use PETRA® to integrate digital log, well, production, perf, seismic and tops data. IHS is the only company to provide you with the complete picture.



Why wait? Subscribe today! Call **888.OIL.DATA** (645.3282) or e-mail sales.energy@ihs.com

The Source
for Critical Information and Insight™

NOGS Fall Field Trip: The Baton Rouge Fault . . . and its Friends



Many attendees show keen interest



Kathy Haggar fields questions

South Louisiana and Offshore Exploration and Production Activity

DRILL BITS

- On 14 October, **BP America Inc.** announced an oil discovery at its "Freedom" prospect (Noble Energy's "Gunflint" prospect) in the deepwater Gulf of Mexico. The well, located in MC 948, ~70 miles southeast of the Louisiana Coast, is in ~6,100 feet of water. The discovery was drilled to a MTD of ~29,280 feet and encountered greater than 550 net feet of hydrocarbon-bearing sands in Middle and Lower Miocene reservoirs. Appraisal will be required to determine the size and commerciality of the discovery.

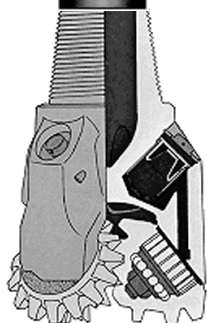
"The Freedom well is our third discovery in this part of the deepwater Gulf of Mexico following our Tubular Bells and Kodiak discoveries," said Andy Inglis, Chief Executive, Exploration and Production. "This discovery further strengthens BP's resource base and portfolio of potential development projects in the Gulf of Mexico. We believe that Freedom straddles MC 948 (BP 25%) and MC 992 (BP 67.75% WI and BHP 32.25% WI) and we look forward to working with our various partners towards efficient development of these discovered resources." The well is operated by BP with a 25% WI, and includes co-owners Noble Energy, Inc. (37.5% WI), Samson Offshore Company (25% WI), and Marathon Oil Company (12.5% WI).

The lease was acquired by Noble Energy (50%) and Samson Offshore (50%) at OCS Lease Sale 198 in March, 2006 for a bonus bid of \$20,217,600. The second highest bid, \$17,019,845, was from BP (100%). MC 992 was acquired by BHP (75%) and Nexen (25%) at OCS Lease Sale 182 in 2002 for a bonus of \$815,552, with BP submitting the third highest bid.

- Murphy** announced on 21 October that it had made a discovery at its Dalmatian prospect in DC 48. The well encountered a net 120 feet (MD) of high quality natural gas pay. Water depth was ~5,900 feet. The well will be developed as a sub-sea tie-back to existing infrastructure in the area. Partners in the well are Murphy (50% WI and operator), Newfield Exploration (37.5% WI) and Mariner Energy, Inc. (12.5% WI). The block was acquired by Murphy, ODECO, and Conoco in OCS Sale 116 for a bonus of \$184,500.

Murphy (100% and operator) also announced that "Manhattan" (LL 511) was unsuccessful and was plugged and abandoned. PTD was 12,000 feet with the location in ~10,000 feet of water. The block was also acquired in OCS Sale 116 for a bonus of \$183,744.

- McMoRan Exploration** on 23 October announced a successful production test at Flatrock No. 4 (location "C"). The production test, in the primary objective Rob-L section, FARO ~109 MMCFG/D with 2,500 BC/D and no water, on a 50/64" choke with FTP 8,170 psi. This is the same Rob-L sand currently producing at an approximate gross rate of 100 MMCFG/D in the Flatrock No. 2 well, which commenced production in July 2008. McMoRan and its partners will use the results of the production test to determine the optimal flow rate for the well, which is expected to begin production by year-end 2008 using the Tiger Shoal facilities in the immediate area.



Since the initial discovery in July 2007, McMoRan has drilled five successful wells at Flatrock (SMI 212) in the OCS 310/Louisiana State Lease 340 area in approximately 10 feet of water. The first three wells are currently producing at an aggregate gross rate of ~170 MMCFGE/D.

Wireline logs in the Flatrock No. 5 development well run during October 2008 indicated 100 net feet of pay (based on new data) in the Rob-L section. The well was being drilled below 15,800 feet as of the report dates to a PTD of 18,400 feet, targeting deeper Rob-L and Operc sands.

The No. 6 delineation well, located on SMI 217, is expected to be spudded in the fourth quarter of 2008. Objectives are the deeper Operc and possibly penetrate the upper Gyro section at the Flatrock/Hurricane Deep structure. Successful wells can be brought on line quickly using the Tiger Shoal facilities in the immediate area.

Chevron has a 45% WI in Flatrock; McMoRan has a 25.0% WI and Plains E & P Co. holds a 30.0% WI.

- At one of the most watched wells in the GoM, **McMoRan** also announced it plans to complete and test the ST 168 No. 1 (formerly known as Blackbeard West No. 1). Permitted to 35,000 feet, the well was drilled to a TD of 32,997 feet in October 2008. Logs indicated four potential hydrocarbon bearing zones below 30,067 feet that require further evaluation. The well will be temporarily abandoned while the necessary long-lead time completion equipment is procured for this anticipated high pressure test. McMoRan will continue to review additional drilling opportunities on the flanks of the structure and on other acreage it holds in the ultra-deep trend.

ST 168 No. 1 well is located on the structural crest. Seismic data indicates the potential for significantly thicker sands on the flanks of the structure. Consequently, McMoRan believes additional flank drilling could result in significant reserve potential.

ST 168 No. 1 is located in 70 feet of water ~115 miles southwest of New Orleans. McMoRan operates the well, which is the deepest ever drilled below the mud line in the GoM, and has a 32.3% WI. Partners, Plains E & P Co. and Energy XXI hold a 35% WI and a 20% WI respectively.

The well, originally operated by ExxonMobil, was spudded in early February 2005 and failed to reach its primary objectives due to higher than expected pressure. It was temporarily abandoned in August 2006 at a TD of 30,067 feet and encountered a thin gas bearing sand below 30,000 feet. Original partners were ExxonMobil (25% and operator), Newfield [now McMoRan] (23%), BP (20%), Petrobras America (20%), Dominion (7%), and BHP Billiton (5%).

- Paul Post



Eni Petroleum

1250 Poydras Street
Suite 2000
New Orleans, LA 70113
Tel: (504) 593-7000
Fax: (504) 593-7745

1201 Louisiana Street
Suite 3500
Houston, TX 77002
Tel: (713) 393-6100
Fax: (713) 393-6205



**Shell has worked in partnership
with the NOGS for many years, and
is proud to count the society among
its closest business associates.**

The New Orleans Geological Society was organized in 1941 to foster scientific research and advance the science of geology. Particular emphasis is laid on the exploration for and production of petroleum and natural gas. Related objectives include encouraging the adoption of improved methods of exploration, disseminating pertinent geological and technological data, and maintaining a high standard of professional conduct among its members.

www.shell.com/us.sepco

BIG BANG BLAMED ON SOFTWARE UPGRADE! [Should Have Used KINGDOM®!]

**Avoid system-wide consequences
from upgrading your geoscience software.**

KINGDOM, from SMT, gives you the best in technology today without requiring that you abandon existing solutions. It's easy to use, coexists with your current software, and provides cutting edge, scaleable functionality - getting you productive quickly! In fact, 9 of 10 customers surveyed say KINGDOM is easier to use than the competition.

No wonder KINGDOM is the industry leader for PC-based interpretation. And our reputation is...expanding.




Visit our Web site at www.seismicmicro.com/smt-bigbang10 and learn why KINGDOM 8.2 is the market leader for PC-based interpretation with over 2,500 companies in 85 countries.





Intuitive. Integrated. Interpretation.

America +1 (713) 464-6188 **Asia** +65 6220 1089 **Europe** +44 (0) 20 8240 6524

A Company that Shines

 Geophysical Products

 Geological Products

 Imaging Services



TGS has been providing best-in-class multi-client data and services to successful E&P companies for over a quarter century. Our geophysical and geological data products are distributed around the globe and include one of the youngest and best targeted multi-client seismic libraries, extensive magnetic and gravity data, the industry's largest global database of digital well logs, and regional interpretive products. We also provide high-end depth imaging services to help resolve complex seismic imaging problems. Together, our products and services give you a more complete picture of the subsurface to help your exploration program *shine*.

For more information, visit www.tgsnopec.com today.



www.tgsnopec.com

NORWAY +47 66 76 99 00 | USA +1 713 860 2100 | UK +44 (0) 1234 272122 | AUSTRALIA +61 8 9480 0000 | RUSSIA +7 495 959 8117
©TGS-NOPEC Geophysical Company. All Rights Reserved.

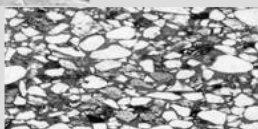
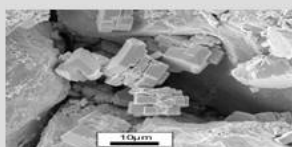
Complex Reservoir Evaluation?

Log Calibration SATURATION MODELING PVT Analysis
 Reservoir Performance FRACTURE DESIGN Sand Control
 Completion Design Flow Assurance Borehole Stability
 Reserve Estimates COMPREHENSIVE CORE ANALYSIS

Simple Solution: Rely on Experience!

Rely on Core Laboratories!

- Comprehensive core analysis laboratory and wellsite services
- Comprehensive reservoir fluid laboratory and sampling services



New Orleans: 504-733-6583

Lafayette: 337-837-8616

Houston: 713-328-2673

www.corelab.com

SURVIVOR™

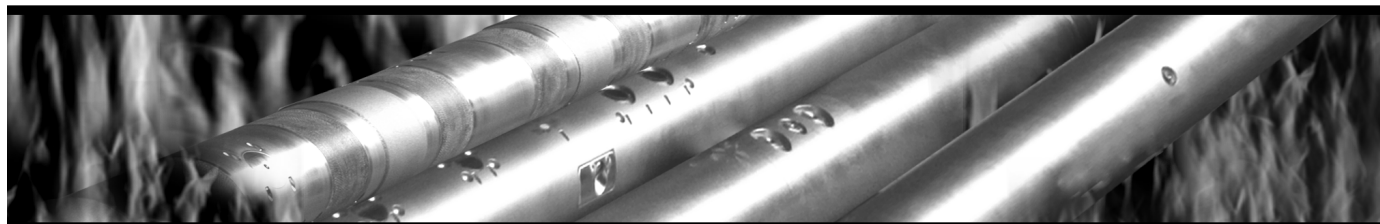
LOGGING-WHILE-DRILLING SUITE

The SURVIVOR™ Suite uses our highly reliable HDS-1 Directional Gamma Ray technology, Array Wave Resistivity tool, Slim Density Neutron Standoff Caliper tool and our Dynamic Pressure Module to create a complete system for logging in hostile drilling environments.

Temperature Rating.....350°F (175°C)

Pressure Rating25,000 psi

Logging Capacity300+ circulating hours



RELIABILITY. ACCURACY. VERSATILITY. WE DELIVER.

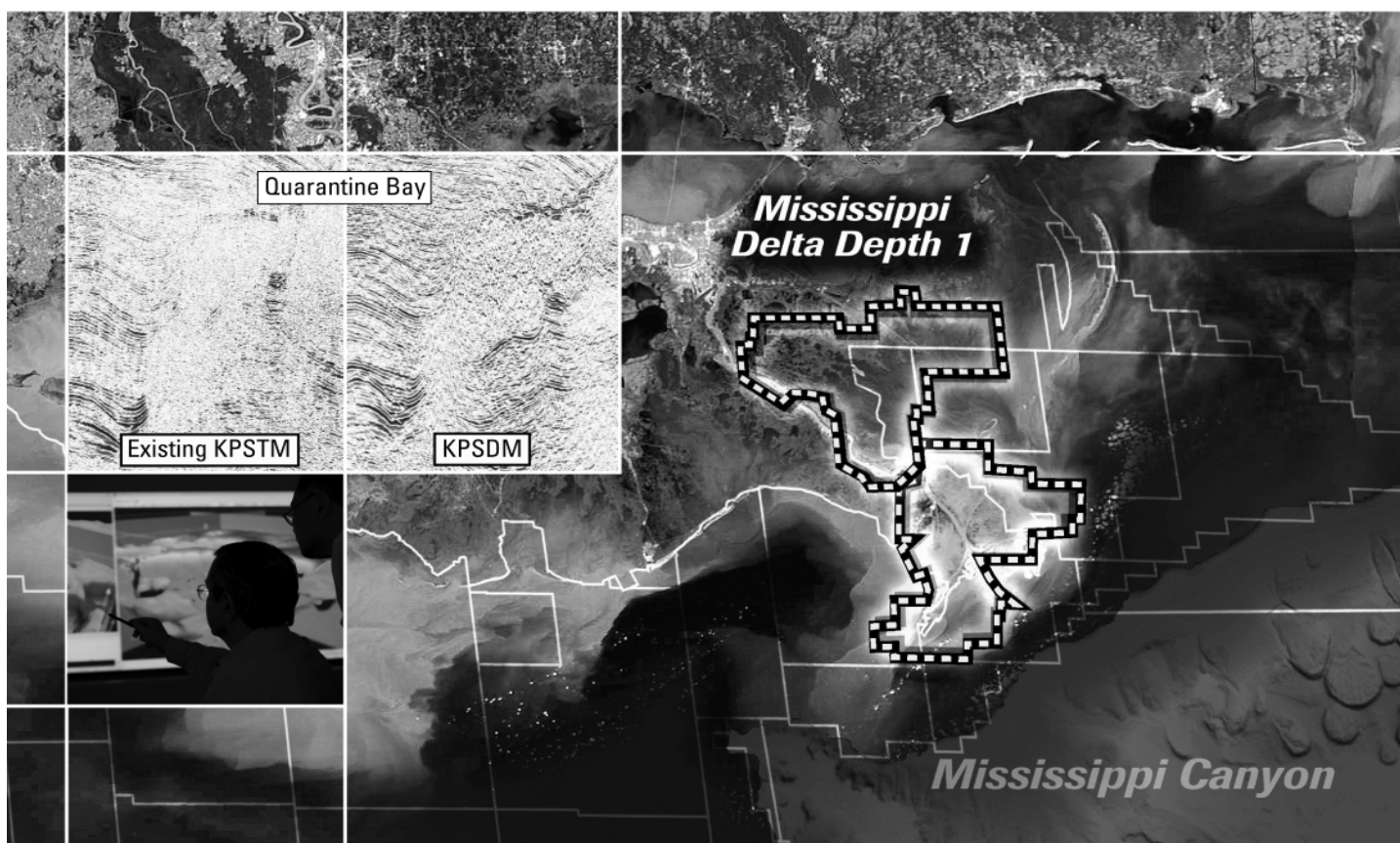
e-mail: pfmarketing@pathfinderlwd.com

www.pathfinderlwd.com

© 2006 Pathfinder Energy Services, Inc. All rights reserved.

PATHFINDER®

Expand your opportunities ...



Announcing Mississippi Delta - *Depth 1*, current depth image reprocessing now in progress.

Multiclient^E

Experience the industry-leading benefits of WesternGeco state-of-the-art processing, designed to eliminate fault shadows and enhance deep imaging.

Delivering anisotropic Kirchhoff volumes:

- Processing and remigration of twelve legacy surveys covering 1,855 square miles.
- High-quality time imaging using relative amplitude anisotropic prestack time migration followed by improved structural imaging utilizing anisotropic prestack depth migration.

Excellence in technology – Experienced professionals.

To learn more about our Multiclient products, call +1 713 689 1000.

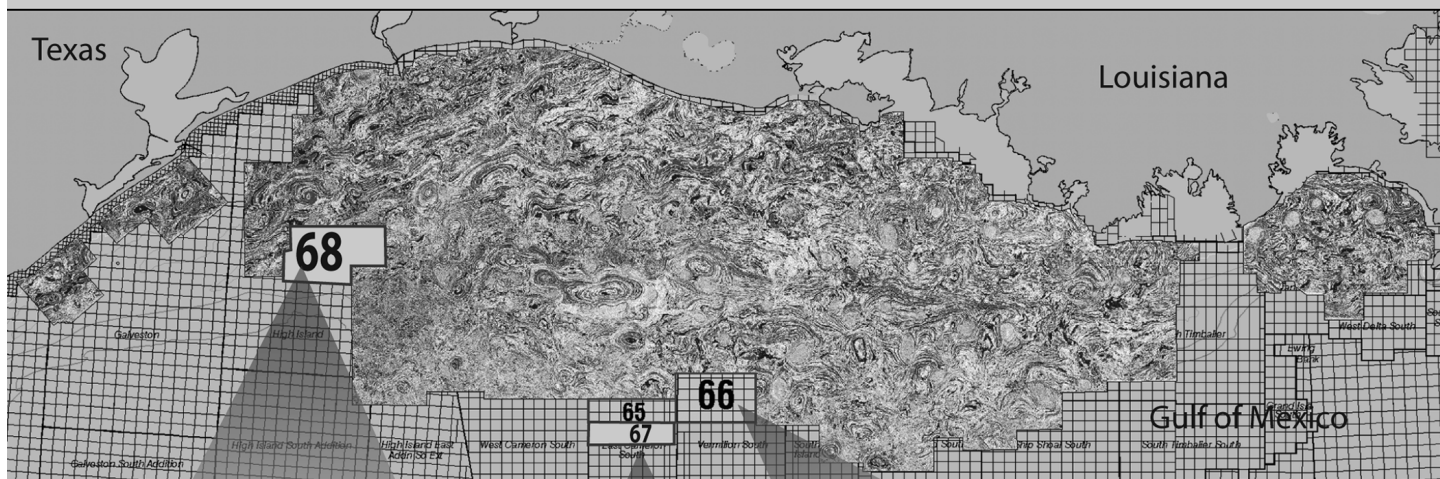
Multiclient to the Power of E

www.slb.com/westerngeco



© 2008 Schlumberger

By the time you read this ad, this map will be out of date.



Because our crews are acquiring data every day, all day
to expand Fairfield's 3D data base.



**High Island (68) &
E. Cameron S. (67)**
30,000' offsets,
11 second records
processed in mid 2008

**NOW
ACQUIRING**



**E. Cameron South (65) &
Vermilion South (66)**
30,000' offsets, 11 second records
processed in January 2008

Visit www.fairfield.com to view Fairfield's multi-client coverage of 3D GOM data.



FAIRFIELD
INDUSTRIES

Houston 281/275-7500
New Orleans 504/525-6400

Proud to be
an American
company

THE NEW ORLEANS GEOLOGICAL SOCIETY MEMORIAL FOUNDATION, INC.

The Memorial Foundation is an IRS Tax Exempt Code #501 (c)(3) organization. The Federal I.D. is: 72-1220999. Please consider making your donation prior to the close of this year's fiscal cycle which is September 30, 2009. Your individual support in any amount will help meet the IRS Guidelines for our Foundation. *Thanks!*

\$15,000 AND ABOVE

Olga Braunstein Succession

Gibbett Hill Foundation

In Memory of Steve & Marion Millendorf,

William J. Prutzman, Roger G. Vincent & Ron Youngblood

\$10,000

The Booth-Bricker Fund

In Memory of Richard W. Boebel

George W. Schneider, Jr. and Family

In Memory of George W. Schneider, Sr.

\$7,000 TO \$9,000

Paul C. Mc Williams

\$3,000 TO \$4,000

NOGS Golf Tournament May 2007

In Memory of Bill Craig

\$1,000

C & R Exploration, Inc.

In Memory of Richard W. Boebel

Thornton E. Anderson

In Memory of Richard W. Boebel

\$500

Carlo and Beverly Christina

In Memory of Richard W. Boebel

Joanne J. Clark and Family

In Memory of Richard W. Boebel

Joffre J. Crouere

In Memory of Richard W. Boebel

\$2,000

Bridwell Oil Company

In Memory of Richard W. Boebel

\$250 TO \$499

Carlo C. Christina

In memory of Robey H. Clark

In Memory of Al Gilreath

In memory of Allen R. Stern

Seismic Exchange, Inc.

In Memory of Richard W. Boebel

Carol and Gilbert St. Germain

In Memory of Richard W. Boebel

UP TO \$249

John Edward Allen, Jr.

Don and Carol Andrews

In Memory of Thomas H. Philpott

In Memory of William B. Rodan

Donald I. Andrews

In Memory of T. Wayne Campbell

Robert J. Ardell

In Memory of Richard W. Boebel

In Memory of Dr. Gordon M. Frey

Peggy and Robert Armstrong

In Memory of Richard W. Boebel

Bruce Bahlinger

In Memory of Thomas H. Philpott

Jack R. Banttari

Abraham Biadgelgne

Maurice N. Birdwell

In Memory of Jim Davis

Hilary James Brook

Robin A. Broussard

In Memory of Charles L. Jones

In Memory of Thomas H. Philpott

Jack G. Bryant

Rob Burnett

Chevron

Matching Funds

Arthur F. Christensen

Ellen F. Clark

James S. Classen

In Memory of All Gilreath

Clarence F. Conrad

Charley and Trudy Corona

In Memory of Mary Kirk Bannell

Charley Corona

In Memory of Charles L. Jones

In Memory of McLain Forman

In Memory of Richard W. Boebel

Michael A. Danahy

M. R. "Bob" Douglass

Merle J. Duplantis

George H. Evans

Exxon Mobil Matching Funds

Michael N. Fein

Mark J. Gallagher

David Garner

FONO FUND

The FONO Fund accepts contributions that are invested and the income dedicated to assure sufficient financial resources will always be available to maintain the NOGS business office. Contributors are reminded that donations to the FONO Fund are not covered by the IRS 501 (c)(3) tax exempt classification and should be reported as a business expense on your IRS tax report.

\$600

Richard W. Boebel

Willis E. Conatser

\$500

James A. Hartman

In Memory of Robert W. Sabate'

UP TO \$249

Woods W. Allen, Jr.

Donald I. Andrews

Alfred H. Baker Jr.

Philip Beron, Jr.

Joseph E. Boudreaux

Cynthia A. Bradford

Eric C. Broadbridge

Hillary James Brook

Jack G. Bryant

In Memory of Shelby W. Smith

J. Sybil Calloway

Anthony Carollo Jr.

Arthur F. Christensen

James S. Classen

Richard P. Colomes

Clarence F. Conrad

Joffre J. Crouere

John Dombrowski

Merle J. Duplantis

Richard A. Edmund

Parrish N. Erwin, Jr.

Niles R. Faulk

Michael N. Fein

Laurens Gaarenstroom

Mark J. Gallagher

Arthur J. Garden

Duncan Goldthwaite

Peter G. Gray

James A. Hartman

In Memory of Brian J. O'Neill

Bernard L. Hill, Jr.

Owen R. Hopkins

Thomas A. Hudson

Kenneth Huffman

Paul Jurik

Tom Klekamp

Richard G. Klibert

William J. Malin

Jeannie F. Mallick

George M. Markey, Jr.

Louis L. McCormick

Robert H. Monahan

Robert G. Murphy

William J. O'Leary

Richard A. Olsen

Linda and Bill Peirce

Edward B. Picou, Jr.

In Memory of Robert W. Sabate'

Jaser N. Rafidi

James P. Raymond, Jr.

Brenda E. Reilly

C. R. Rondeau

Monte C. Shalett

Rudolf B. Siegert

Raymond Stephens

Stephen Szydluk

Scott A. Wainwright

Roy C. Walther

Arthur S. Waterman

Robert C. Weissmann

Louis E. Willhoit, Jr.

James W. Yeldell Jr.

Jim Zotkiewicz

CONTRIBUTIONS FOR BOTH FUNDS
THROUGH NOVEMBER 14, 2008.
DONATIONS ARE LISTED FOR ONE YEAR.

Peter G. Gray

Bernard L. Hill, Jr.

In Memory of Robert E. Osborne

Owen R. Hopkins

Dan E. Hudson

Thomas A. Hudson

Kenneth Huffman

Thomas E. Johnson

Tom Klekamp

In Memory of Robert W. Sabate'

John C. Kuczewicz, Jr.

Russell J. Landry

In Memory of Ken Savage

William J. Malin

Jeannie F. Mallick

David C. Mount

Robert G. Murphy

New Orleans Geological Auxiliary

In Memory of Mary Kirk Bannell

Russell H. Nordwell

---continued on page 30---



A
whole
new
center
of
gravity
and
magnetic
services.

Discover the New Fugro Gravity & Magnetic Services.

Now, the full spectrum of potential field products and services is available from a single source: Fugro Gravity & Magnetic Services. Fugro Gravity & Magnetic Services has more than 50 years of land, marine and airborne oil and gas exploration experience, providing geologic solutions, enhancing seismic data and improving drilling efficiency. And, all delivered by 600 professionals around the world. For cost-effective exploration risk reduction, depend on Fugro Gravity & Magnetic Services, a whole new center of gravity and magnetic services.

Acquisition • Processing • Interpretation • Software • Non-Exclusive Data



Gravity Inspired. Magnetically Inclined.

www.fugro-gravmag.com/solutions



Shoreline Gas Inc.
www.shorelinegas.com
Full Service Natural Gas Marketing



Sydboten & Associates, Inc.
*Geological and Geophysical Consulting,
 3-D Seismic Interpretation*

Ben D. Sydboten, Jr., CPG

124 Heymann Blvd., Suite 202
 Lafayette, LA 70503

Office (337) 234-5288
 Cell (337) 234-5491



Collarini Energy Staffing Inc.

**Full-Time and Temporary
 Exploration and Production Personnel**

Facilities · Drilling · Production · Reservoir Engineers
 Landmen · Geoscience · Information Technology
 Health and Safety · Management · Procurement
 Accounting · Administrative Support

Houston and New Orleans
 (832) 251-0553 · Fax (832) 251-0157
 www.collarini.com

Connecting the Industry's Experts



Collarini Associates

4200 South I-10 Service Road, Suite 230
 Metairie, Louisiana 70001
 (504) 887-7127
 (504) 887-7162

**Reservoir Engineering
 Oil & Gas Property Evaluation
 3-D Seismic Interpretation
 Integrated Field Studies**

New Orleans ■ Houston
 www.collarini.com



625 E. Kaliste Saloom
 Lafayette, La 70508

18900 Greenspoint Dr, Suite 225-S,
 Houston, Tx 77060

www.stoneenergy.com



**WOODSIDE
 WOODSIDE ENERGY
 (USA) INC.**

WWW.WOODSIDE.COM.AU

**71683 Riverside Dr.
 Covington, LA 70433
 Tel: (985) 249-5300
 Fax: (985) 249-5388**

**5151 San Felipe #1200
 Houston, TX 77056
 Tel: (713) 401-0000
 Fax: (713) 401-0088**

ATWATER CONSULTANTS, LTD.

REGISTERED AND CERTIFIED PETROLEUM PROFESSIONALS

**GEOLOGICAL, ENGINEERING, GEOPHYSICAL,
 TRAINING AND EXPERT WITNESS SERVICES**

**3525 Hessmer Ave, Ste 304
 Metairie LA 70002**

**Tel. (504) 581-6527
 Fax (504) 524-7798**



CIMAREX ENERGY CO.

**GULF OF MEXICO REGION
 GOM, SE La., N. La., MS, AL**

1100 Poydras St.; Suite 1100

Keith Gourgues

New Orleans, Louisiana 70163

Region Manager

504-586-1815 / Fax 504-586-9035

(832) 242-6000 (O)
 (713) 917-0493 (O)

(504) 931-7506 (C)
 johnjurasin@jurasinoilgas.com

NORTHCOAST OIL COMPANY

610 E. Rutland St.
 Covington, LA 70433
**(985) 898-3577
 (985) 898-3585 FAX**


**Jack M. Thorson
 Eric C. Broadbridge
 J. Daryl Gambrell
 Raymond W. Stephens**

JURASIN OIL & GAS

9700 Richmond Ave., Suite # 124
 Houston, TX 77042-4821

JOHN M. JURASIN
 President

Cert. Pet. Geologist #4284
 Cert. Prof. Earth Scientist #1961

ANSYTHE Donald I. Andrews 504-887-3432 	D-O-R ENGINEERING, INC. 3-D and Geoscience Services 120 Oil Center Dr., Bldg. 12 P.O. Box 51707, Lafayette, LA 70505 Bus. (337) 233-2378 Fax (337) 233-2907
THE BOEBEL COMPANY Oil and Gas Investments 170 Broadway Street, Suite 321 New Orleans, LA 70118 (504) 866-4313	EDWARD B. PICOU, JR. Consulting Micropaleontologist - Retired 228 St. Charles Ave., Suite 1330 C New Orleans, LA 70130 Bus. (504) 529-5155 Res. (504) 282-3096
BOO-KER OIL & GAS CORP. Gray S. Parker 826 Union, Suite 300 New Orleans, LA 70112 Bus. (504) 581-2430 Fax (504) 566-4785	H. WARREN BELL Oil and Gas Exploration 2500 Tanglewilde, Suite 485 Houston, TX 77063-2126 Bus (713) 266-7297 Fax (713) 266-7298
C & R EXPLORATION, INC. Carlo C. Christina Lawrence G. Ringham	PHELPS GEOSCIENCE Onshore Gulf of Mexico Geology and Geophysics Prospect Generation and Evaluation Houston, TX jsfphelps@yahoo.com (281) 398-5208
C. R. RONDEAU Petroleum Geologist 119 W Southland Ave. Ironwood, MI 49938 Res. (906) 932-4692	RAFIDI OIL AND GAS, INC. Jaser N. Rafidi, President 4415 Shore Dr., Suite 202 Metairie, LA 70006 Bus. (504) 722-2942 Fax (504) 888-5539; Res. (504) 888-1661
CLASSEN EXPLORATION, INC. James S. Classen Looking for close in deals P.O. Box 140637 Boise, ID 83714 classenllc@msn.com Bus. (208) 854-1037 Fax (208) 854-1029	ROY C. WALTHER Petroleum Geologist 2421 Prancer Street New Orleans, LA 70131 Bus. (504) 392-8513 Res. (504) 392-9332
COLLES C. STOWELL Oil and Gas Consultant 22 Sea St. Manchester, MA 01944 (978) 526-1286	TONY CAROLLO Consulting Geologist Unitization Geosteering Field Studies 1701 Peach Street Metairie, LA 70001 Bus. (504) 885-0004 Res. (504) 885-6829

Memorial Fund donations, continued from page 27:

Richard A. Olsen

In Memory of Richard W. Boebel

In Memory of Robert W. Sabate'

William S. Peirce

Edward B. Picou Jr.

In Memory of Richard W. Boebel

In Memory of Dr. M. Gordon Frey

In Memory of Brian J. O'Neill

Jaser N. Rafidi

Edmund L. Russell

In Memory of Francis X. Bland

Robert C. Shoup

Rudolph B. Siegert

In Memory of Richard W. Boebel

Dr. J. O. Snowden

Raymond O. Steinhoff

In Memory of Robert S. Wood

In Memory of Harold E. Voke

Stephen Szydluk

Patrick F. Taylor Foundation

Employee Matching Gifts Program

Scott A. Wainwright

Roy C. Walther

William M. Whiting

Whitney National Bank Officers and Directors

In Memory of Richard W. Boebel

Louis E. Willhoit, Jr.

Armour C. Winslow

In Memory of Rita Menzel Winslow

Frances A. Wiseman

In Memory of Steve Widdicombe

Jim Zotkiewicz

In Memory of Bill Craig

Robin A. Broussard

Chevron

M. R. "Bob" Douglass

Bernard L. Hill, Jr.

Jeff Jandegian

John C. Scheldt

Candace V. Strahan

In Memory of James Strahan

PGS. Clearly Better.

Crystal continues...

Wide Azimuth Multi-Client 3D

- » 580 deepwater Gulf of Mexico blocks
- » Ramform technology and efficiency advantages
- » Proven portfolio of Wide Azimuth data processing technologies
 - » Full Azimuth Tomography
 - » 3DSRME
 - » Pre-stack Depth Migration
 - » Kirchhoff
 - » WEM
 - » Beam
 - » RTM

Osl
Tel: 47-67-52-6400
Fax: 47-67-52-6464

London
Tel: 44-1932-260-001
Fax: 44-1932-266-465

Houston
Tel: 1-281-509-8000
Fax: 1-281-509-8500

Singapore
Tel: 65-6735-6411
Fax: 65-6735-6413

A Clearer Image
www.pgs.com



SEE YOUR DATA IN A WHOLE NEW LIGHT!

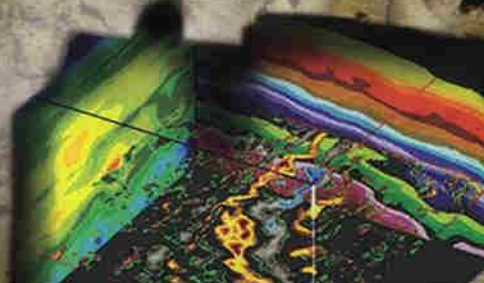
Take the pressure out of exploration and drilling by seeing what you are going to encounter.



eSeis

www.e-seis.com
713.531.1447

- Lithology & Fluids
- Depositional Facies
- Pore Pressure from V & Q
- Well Planning Consultation



MARINE PROPERTIES, LLC BERKSHIRE EXPLORATION CO.

MONTE C. SHALETT, CPL, PRESIDENT

3030 Lausat Street
Metairie, LA 70001-5924

BUS. (504) 831-7779
FAX. (504) 831-8315

PCI

Paleo Control, Inc.

Houston, Texas
713-849-0044



Drilling Wells, Studies and Data Base

Loyd Tuttle

Frio, SE Texas

Bob Liska

Wilcox, S and SE Texas

Jim Thorpe

Miocene and Cam-Miogyp



WWW.NOGS.ORG

NEW ORLEANS GEOLOGICAL SOCIETY

810 Union Street, Suite 300
New Orleans, LA 70112-1430

