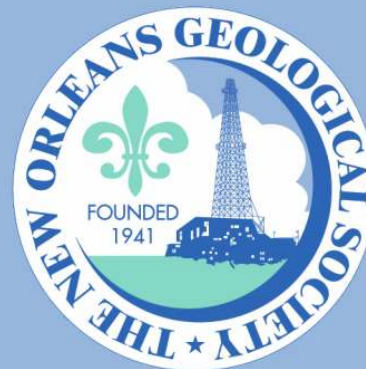


NOGS LOG



August 2008

Volume 49, Number 2

Upcoming Events and Activities

August 7-8 - Deepwater Technology Seminar

At the Hilton Riverside. See announcement on page 13.

August 11 - NOGS Luncheon

*** At the Holiday Inn Downtown Superdome ***

Free validated parking in hotel garage

Guest speaker Roger Young, Petrophysicist and CTO of eSeis, Inc.,
will present: "Relating Depositional Facies to the Seismic AVO Response."

(See Page 7 for Abstract and Biography)

HOLIDAY INN DOWNTOWN SUPERDOME

ADMISSION:

Check with concierge or
front desk for location

Lunch served at 11:30am

with reservation \$30.00

without reservation \$35.00

Student Member with reservation Free

August 12 - PTTC Seminar

Dr. Ernie Mancini will present: "Sequence Stratigraphy and its application to petroleum exploration in onshore Mesozoic Salt Basins, Gulf Coastal Plain." See page 27 for more information.

September 8 - NOGS Luncheon

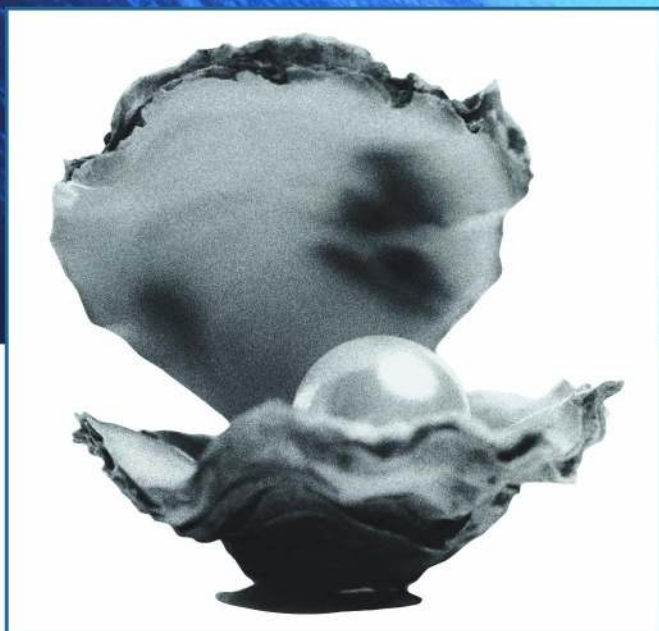
Guest speaker William R. Finley, Independent Geologist, will present
"Creole - Geology breaths new life into 1st Gulf of Mexico Oil Field."

September 19 - NOGS Kickoff Party

7-10:00pm at New City Grill in Metairie. \$35 per person, cash bar.

See announcement on page 15.

Introducing OYSTER



A new way to access U.S. well data from TGS' collection of over 5,000,000 logs

With **OYSTER**, LOG-LINE Plus! users pay a single annual fee for **unlimited downloads** of depth-calibrated smartRASTER® logs from TGS' unrivaled U.S. collection. Having all the data you need is now more affordable than you think.

For more information, please call **888-LOG-LINE** or contact your TGS account manager.



Geophysical
Products



Geological
Products



Imaging
Services

www.tgsnopec.com

NORWAY +47 66 76 99 00 | USA +1 713 860 2100 | UK +44 (0) 1234 272122 | AUSTRALIA +61 8 9480 0000 | RUSSIA +7 495 229 13 24

©2008 TGS-NOPEC Geophysical Company. All Rights Reserved.

NOGS Office

Office Manager: Annette Hudson
Office Hours: 8:30am – 3:30pm on Monday-Wednesday-Friday
Tel: 504-561-8980 □ Fax: 504-561-8988
E-mail: info@nogs.org □ Website: www.nogs.org
The office is located at Suite 300, 810 Union Street, New Orleans, LA 70112.
Correspondence and all luncheon reservations should be sent to the above address.
Sent to press on July 25, 2008.



BOARD OF DIRECTORS

		Company	Phone	E-mail
President	William M. Whiting	Consultant	504-947-8495	bootscon@aol.com
Vice President	Allan Melillo	Chevron	985-773-6756	ajme@chevron.com
Secretary	Frances Wiseman	MMS	504-736-2912	frances.wiseman@mms.gov
Treasurer	James Swaney	MMS	504-736-2677	james.swaney@mms.gov
President-Elect	Tom Klekamp	Amber Resources LLC	985-845-4046	klekamp@bellsouth.net
Editor	Michael D. Miner	UNO	504-280-3866	mminer@uno.edu
Director 2009	Willis E. Conatser		504-469-2496	weconatser@aol.com
Director 2010	Michael M. Ledet		504-394-9636	mikeledet@cox.net
Director 2011	Scott A. Wainwright	Bret Exploration Co Inc	504-889-2700	scott_wainwright@hotmail.com

COMMITTEE

	Chairperson			
AAPG Delegates	Dave Balcer	Chevron	985-773-6725	dbalcer@Chevron.com
AAPG Student Chapter	Bobby Cosentino	Tulane University	504-865-5198	rcosentino@tulane.edu
AAPG Student Chapter	Bryan Rogers	UNO	504-736-2772	thgem@gmail.com
Advertising-Log	Jennifer Connolly	Shell	504-728-6411	jennifer.connolly@shell.com
Auditing	J. David Cope	Ankor Energy	504-596-3672	dcope@ankorenergy.com
Awards	Michael N. Fein	W & T Offshore	504-831-4171	mikef@wtoffshore.com
Ballot	James Swaney	MMS	504-736-2677	james.swaney@mms.gov
Best Paper	David E. Reiter	Energy Partners Ltd	985-893-8072	dreiter@eplweb.com
Continuing Education	TBA			
Employment Counseling	Paul J. Post	MMS	504-736-2954	paul.post@mms.gov
Entertainment	Tom Klekamp	Amber Resources LLC	985-845-4046	klekamp@bellsouth.net
Environmental	Daisy Pate	Eustis Geotechnical Eng.	504-613-5798	dpate@eustiseng.com
External Affairs	Michael A. Fogarty	Sylvan Energy, LLC	603-523-4808	mike.a.fogarty@gmail.com
Field Trip	David Garner	Shell	504-728-6154	David.Garner@shell.com
Finance and Investment	James Swaney	MMS	504-736-2677	james.swaney@mms.gov
Historical	Edward B. Picou, Jr.	Consultant	504-529-5155	epicou@bellsouth.net
Membership/Directory	Penne Rappold	Shell	504-728-4338	prappold@gmail.com
New Geoscientists (NGNO)	TBA			
Nominating	Alfred H. Baker, Jr.	Beacon Exploration, LLC	504-836-2710	abaker1006@aol.com
Non-Technical Education	Duncan Goldthwaite	Consultant	504-887-4377	DGldthwt@aol.com
Office Operations	Arthur H. Johnson	Hydrate Energy International	504-464-6208	artjohnson51@hotmail.com
Publications Sales	Edward B. Picou, Jr.	Consultant	504-529-5155	epicou@bellsouth.net
Photography	J. David Cope	Taylor Energy Co LLC	504-589-0419	dcope@taylorenergy.com
School Outreach	Thomas C. Bergeon	Century Exploration	504-832-3772	Tom.bergeon@centuryx.com
Scouting	Carol Rooney	Consultant Geologist	504-835-1909	carolbrooney@aol.com
Technical Projects	TBA			
Ad Hoc Committee on				
University Support	Michael J. Gallagher	Eni Petroleum	504-593-7480	Michael.Gallagher@enipetroleum.com

NOGS LOG STAFF

Editor	Michael D. Miner	UNO	504-280-3866	mminer@uno.edu
Editor-Elect	Clare Falcon	Schlumberger	504-592-5385	cfalcon2@new-orleans.oilfield.slb.com
Auxiliary	Arleen Falchook	NOGA	504-885-3108	falchook@aol.com
Info Tidbits	Clare Falcon	Schlumberger	504-592-5385	cfalcon2@new-orleans.oilfield.slb.com
Drill Bits	Paul J. Post	MMS	504-736-2954	paul.post@mms.gov
Webmaster	Jannette Sturm-Mexic			webmaster@nogs.org

NOGS AUXILIARY

Officers		Phone	Directors	Year	Phone
President	Linda Peirce	504-393-7365	Ruth Ingram	2008-09	504-887-5404
1st Vice-President	Jean Jones	504-738-8091	June Perret	2008-09	504-881-9357
2nd Vice-President	Beverly Kastler	504-286-0897	Joan Sylvester	2008-09	504-738-2934
Secretary	Dolores Murphy	504-393-0878	Beverly Christina	2009-10	504-835-2383
Treasurer	Judy Lemarie'	504-393-8659	Peggy Rogers	2009-10	504-392-6323
Parliamentarian	June Perret	504-881-9357	Judy Sabate'	2009-10	504-861-3179
Member-at-Large	Susie Baker	504-466-4483			

--- NOGS Contact List continued on page 10 ---

Precise Data.

"Click"

Unlock the Potential of Your Reservoir.

Today's reservoirs are more challenging than ever. To unlock their potential requires absolutely precise data. OMNI Laboratories has established higher standards, more thorough protocols, and meticulous quality control measures to ensure unsurpassed accuracy. Plus, we have assembled the finest scientists in the field to provide superior interpretation and analysis. When precise data is paramount, choose OMNI Laboratories.

At OMNI, We've Got the Answers.



13 LOCATIONS IN THE U.S., CANADA AND SOUTH AMERICA • HEADQUARTERS: HOUSTON, TX • 832-237-4000 • WWW.OMNILABS.COM



from the President

I'm writing this letter on Bastille Day, July 14th, to meet our new editor's deadline. We have had a Transitional Board Meeting and one very interesting general meeting. The Transitional Board Meeting was June 17th with all new members present. Thanks to Art Johnson for springing for the pizza and soft drinks.

Our new Board is actively at work. The new President-elect, Tom Klekamp, has already organized the fall "Kick Off" party for September 19th at the New City Grill on Metairie Road. More details to follow in this LOG. The Holiday Party is set for December 12th and he is working on one other function. Allan Melillo, the new Vice-President and Program Chairman, is hard at work filling out our meeting calendar for the coming year. Again, when possible we will broadcast to the Chevron Office on the north shore and hopefully that facility will be open to non-Chevron personal in the future. Mike Miner the new Editor has published his first Log and is trying to get the publication in the mails sooner. Mike has accepted additional responsibilities at UNO and would appreciate timely submittals to the LOG. Fran and James are getting familiar with their responsibilities as Secretary and Treasurer, respectively. October 18th has been set as a new field trip date with Dave Garner and Kathy Hagggar organizing the event. The Directors have rotated and we are glad to have Scott Wainwright as the new Director. Clare Falcon Editor-elect is following in Mike's footsteps and is eager to help on other projects. Congratulations to all the Awards recipients they are well deserved and special thanks to Mike Fein, new Honorary Life Member and Dave Reiter Outstanding Service Award recipient.

NOGS thanks Annette, Ed Picou, and Mike Merritt for their efforts in producing the second symposium and forum on "The Geological Facts of Life for Flood Protection in Coastal Louisiana" July 18th at the Orleans Levee District Meeting Room. The Honorable Mike Merritt is Commissioner for the Southeast Flood Protection Authority West Bank.

On July 10th, Annette, Carol, and I attended the final planning committee meeting for the Deepwater Technology Seminar and everything is shaping up to be an outstanding symposium. NOGS is one of the three sponsoring organizations and is assisting with registration among other aids.

Our remaining summer program includes: July 18th Flood Protection Symposium; August 7&8 Deepwater Technology Symposium at the Hilton Riverside (\$200 for NOGS members, includes two lunches and an icebreaker); PTTC meeting with Dr. Ernie Mancini August 12th at the Shell Auditorium (cost: \$100); and FETCH sometime in August. These events, along with our regularly scheduled meetings and luncheons, make for one of the fullest summer calendars of any local professional organization, thanks to our hard-working Board and individual members.

Don't forget the Oct 5-9 joint GCAGS/GSA meeting in Houston. Early bird registration ended July 14; standard early registration ends September 2nd. Get your travel and housing reservations in early as they expect a large turnout. I was asked to get mine in May 20th.

NOGS is again helping to sponsor the August lease sale breakfast (although there is increasing discussion among Board members as to whether we should continue to do it this way or on an individual basis). I think it must be quite difficult for a sale analysis person to make a confident bid with the daily changing oil prices and uncertain economy. For one of my final look-backs, I am reminded of my time as a young geologist working on a sale in the Main Pass area. My prospect block was a simple faulted nose between two producing Chevron fields. It had "bright spots," "dim spots," and "flat spots" on some very old "Spec." seismic data. A sure cinch, but we lost the bid. Frank, the District Manager was non-plussed, "they must have been using \$8 a barrel oil, we could only use \$6". I was outraged, but such is life. That winning bid company later merged with Chevron, so there is justice.

Congratulations to Mike Fogarty a past NOGS President he is newly elected as The DPA Division of AAPG Treasurer. Mike currently lives in Canaan, NH, but continues to be Chairman of the External Affairs committee.

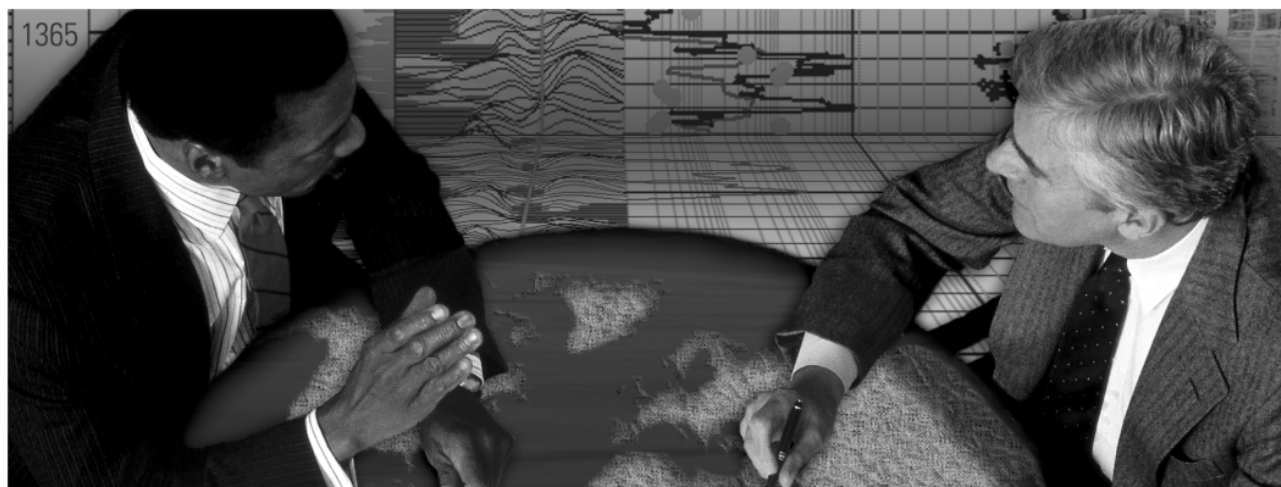
A note to some of our older Chevron retirees, I spotted a note in the Explorer that Jack W. St John had passed.

Our final financial data are being compiled for last year and once complete we will form a committee to organize a new budget for 2008-09.

Remember to renew your memberships or join the AAPG, GSA, NOGS and SEG.

Bill

Schlumberger formation evaluation solutions deliver the answers you need. Our extensive portfolio of services, leading-edge technology, and advanced conveyance options keep you in communication with your well throughout its life cycle.



With formation evaluation technologies from Schlumberger, you can make the best decisions for optimized performance in every well.

The formation evaluation one-stop shop

Whether you are logging in open hole or behind the casing, our broad selection of services ensures the best solution for acquiring formation evaluation data. Tools can be conveyed while drilling or on wireline or pipe. We offer many specialized evaluation capabilities, from density, neutron porosity, and resistivity to borehole imaging, nuclear magnetic resonance logging, borehole seismic, formation pressure testing, and fluid sampling. Advanced triple-combo logging options include the VISION* formation evaluation and imaging-while-drilling services. Coupled with Pulse* telemetry and surveying services, the VISION family provides real-time formation evaluation data and enables optimum well placement.

High-speed wireline measurements are recorded with the Platform Express* logging services. The SlimXtreme* platform is designed for high-pressure, high-temperature environments and the ABC* Analysis Behind Casing services are used after casing is set.

Expert interpretation from the engineers and geoscientists of Schlumberger Data & Consulting Services brings all your data together to give you the answers you need. This expertise is available after logging is complete or as real-time two-way wellsite communication through the InterACT* real-time monitoring and data delivery system.

Schlumberger delivers leading-edge technology and interpretation expertise for all your formation evaluation needs, so every well benefits from the very best information.

For more information visit
www.slb.com/oilfield/formation_evaluation/

*Mark of Schlumberger

04-FE-114

Schlumberger

August 11 Luncheon Presentation
*** at the Holiday Inn Downtown Superdome ***

Relating Depositional Facies to the Seismic AVO Response

presented by

Roger Young

Petrophysicist and CTO of eSeis, Inc.

ABSTRACT

Traditionally, AVO has been used as a tool for finding anomalies caused by the presence of gas. However, AVO response is also sensitive to the character of the sands. For example, AVO can be used to discriminate the following facies: fining or coarsening upward sands, blocky sands, shaley sands, and laminated sands. It is equally appropriate to apply the discussed AVO approach at the beginning of the exploration cycle to the entire dataset before any interpretation has been done. This analysis can continue to be used

through the development stage, allowing the interpreter to apply this technology to focus in on key areas, as well as picking the optimal well location. The discussed AVO approach can reduce exploration life cycle and greatly reduce risk. This presentation will explain and demonstrate the AVO response using models, as well as applications to using mapped AVO information for thickness, porosity, lithologic contrast, fluid contrast, and depositional facies interpretations.

BIOGRAPHY

Roger Young is Chief Technology Officer and Co-Founder of eSeis, Inc., where he is responsible for product development. He is the creator of LithSeis®, an advanced seismic analytical tool, DrilSeis®, a seismic process that produces pore pressure and fracture gradient volumes, and Q-Based® Pore Pressure Prediction, which derives pore pressure from frequency absorption. Roger has 27 years of industry experience, including 12 years of LithSeis development and project work. Prior to eSeis, Roger worked as a petrophysicist for Union Texas, an

integration engineer for Grumman, and a logging engineer for Schlumberger. Roger was instrumental in the discovery of the largest oil field in North America in the last two decades using this proprietary seismic petrophysics technology.

Roger holds a Master of Science in Petroleum Engineering from the University of Houston and a Bachelor of Science in Physics from Clarkson College of Technology. He is an active member of SEG, SPE, AAPG, SPWLA, and HGS.

THE LUNCHEON RESERVATION DEADLINE IS AUGUST 6, SO CALL THE NOGS OFFICE - *TODAY!*

“And Looking Ahead...”

The next NOGS Luncheon will be September 8 at the Holiday Inn Downtown Superdome. Guest speaker William R. Finley, Independent Geologist, will present “Creole - Geology breaths new life into 1st Gulf of Mexico Oil Field.” Contact the NOGS office to make your reservation.



GCSSEPM FOUNDATION 28TH ANNUAL BOB F. PERKINS RESEARCH CONFERENCE

Answering the Challenges of Production from Deep-Water Reservoirs:

Analogues and Case Histories to Aid a New Generation

December 7-9, 2008

Marriott Westchase: Houston, TX

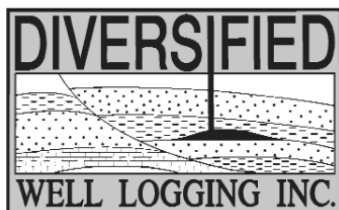
**Information and resgistration are available
at our web site:**

www.gcssepm.org



Relax. We'll keep you posted.

Your rig is offshore and you are not. How do you know what's going on so many miles away? You know because we tell you. Daily or even hourly, Diversified Well Logging's engineers update you on the status of your rig. We are your eyes and ears, especially when it comes to deep water or high pressure, high temperature areas. Diversified offers 24-hour surface evaluation. We provide secure and customized real-time data communication, in-house research and development and 24/7 on-call support for our equipment and our engineers. Whether you have a 10-day job or 110-day job, we provide the specialized attention you require. So, relax. We're with you every step of the way.



Serving the Gulf Coast for over 40 years.

New Orleans • Lafayette • Houston • Dallas • Corpus

800.280.2096

711 West 10th Street • Reserve, LA 70084 • Phone: 985.536.4143 • Fax: 985.536.2427
sales@dwl-usa.com



**PALEO
DATA**

**FULLY INTEGRATED AND
CENTRALIZED BIOSTRATIGRAPHIC
SERVICES**

- ▼ Single-source biostratigraphic databases
for increased accuracy and consistency
- ▼ Integrated foram / nannofossil analyses
- ▼ Complete wellsite paleo services
- ▼ In-house sample preparation
lab for quality-monitoring
and efficiency
- ▼ Sample pick-up service

6619 Fleur de Lis Drive
New Orleans, LA 70124
(504) 488-3711

www.paleodata.com

MCMORAN EXPLORATION CO.



MCMORAN OIL & GAS

www.mcmoran.com

NYSE: MMR

16676 Northchase Dr.
Houston, TX 77060
(281) 539-7600
Fax: (281) 539-7655

1615 Poydras
New Orleans, LA 70112
(504) 582-4000
Fax: (504) 582-4155

110 Travis St., Suite 140
Lafayette, LA 70503
(337) 735-9150
Fax: (337) 735-9151

NOGS CONTACT LIST

--- continued from page 3 ---

MEMORIAL FOUNDATION

BOARD OF TRUSTEES

		Company	Phone	E-mail
2008-09 Chairman	Arthur H. Johnson	Hydrate Energy International	504-464-6208	artjohnson51@hotmail.com
2008-09 Secretary	William M. Whiting	Consultant	504-947-8495	bootscon@aol.com
2008-09 Trustee	David E. Balcer	Chevron	985-773-6725	dbalcer@chevrontexaco.com
2008-09 Trustee	TBA			
2009-10 Trustee	Michael C. Fauquier			
2009-10 Trustee	TBA			
2010-11 Trustee	Timothy J. Piwowar	Shell	504-728-4066	tim.piwowar@shell.com
2010-11 Trustee	TBA			

AAPG DELEGATES

Term Ends

2009	David E. Balcer	Chevron	985-773-6725	dbalcer@Chevron.com
2009	William Whiting	Consultant	504-947-8495	bootscon@aol.com
2009a)	Nancye Dawers	Tulane University	504-862-3200	ndawers@tulane.edu
2009a)	David Cooke	MMS	504-736-2609	david.cooke@mms.gov
2011	Tom Hudson	Chevron	985-773-7163	tom.hudson@chevron.com
2011	Edward B. Picou, Jr.	Consultant	504-529-5155	epicou@bellsouth.net
2011a)	Brenda Reilly	Energy Partners Ltd.	504-799-4811	breilly@eplweb.com
2011a)	Robert Rooney	Century Exploration	504-832-3777	Robert.rooney@centuryx.com

New NOGS
Members
May and
June 2008

Roger W. Jenkins
Murphy Explor. & Prod. Co.
Sr VP North America
Ste 600, 16290 Katy Freeway
Houston, TX 77094
281-675-9000

Barbara Meyer
Taylor Energy Co LLC
Geophysicist
Ste 1100, 1615 Poydras St
New Orleans, LA 70112
504-589-0548

Peter E. Thorpe
US Navy
Environmental Specialist
Bldg 50, 400 Russel Ave
New Orleans, LA 70143
504-678-3824

Paul D. Godfriaux
Minerals Management Service
Geologist
1201 Elmwood Park Blvd
Harahan, LA 70123-2394
504-736-2940

Daniel R. Lasco
Minerals Management Service
1201 Elmwood Park Blvd
New Orleans, LA 70123-2394
504-736-2926

Allen H. Reed, PhD
Naval Research Lab
Bldg 1005
Stennis Space Ctr, MS 39529
228-688-5473

Andrea M. Stancin, PhD
Shell
Production Geologist
701 Poydras St Rm 2394
New Orleans, LA 70131
504-728-0431

SEI®

Seismic Exchange, Inc.

**Strategic Speculative Surveys
Geophysical Data Marketing & Management**

201 St. Charles Avenue, Suite 4300, New Orleans, Louisiana 70170-4300
Telephone 504.581.7153 Fax 504.581.9591
www.seismicexchange.com

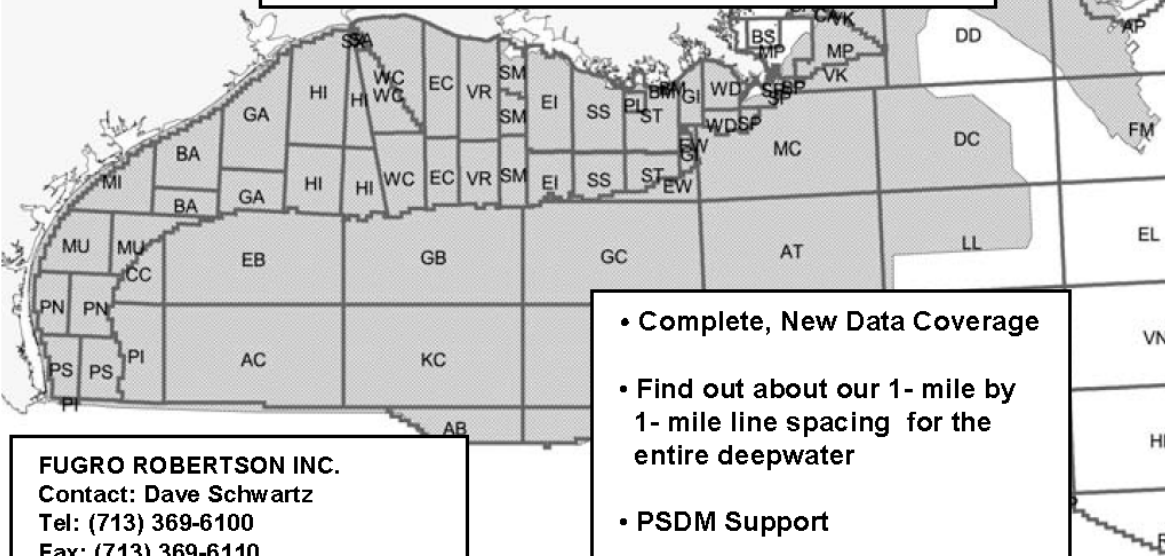
Your
**Full Service
National
Seismic Data
Marketing Firm**

New Orleans
Dallas
Houston
Denver
Oklahoma City
Corpus Christi
Tulsa

Robertson



**"The Place to Go"
For GOM Gravity Data and Interpretations**



FUGRO ROBERTSON INC.
Contact: Dave Schwartz
Tel: (713) 369-6100
Fax: (713) 369-6110
Email: infofri@fugro.com
www.fugro-lct.com

- Complete, New Data Coverage
- Find out about our 1- mile by 1- mile line spacing for the entire deepwater
- PSDM Support
- 3D Modeling



100 Northpark Blvd.
Covington, LA 70433

(985) 773-6000

"Serving the Oil & Gas Industry Since 1983"

Geological,
Geophysical &
Land Drafting

Anthony Catalanotto

President

Stefani Kelone

Drafting and Design



Geo-Draft, Inc.

A Professional Drafting & Graphics Firm

3349 Ridgelake Drive □ Suite 202 □ Metairie, LA □ 70002

Office: (504) 836-2882 Fax: (504) 836-2877

geodraft@bellsouth.net

CLK ENERGY, LLC

Oil & Gas Exploration and Production

1615 Poydras Street
Suite 1300
New Orleans, LA 70112

(504) 529-6100
(504) 596-2021
[Fax]
www.clkenergy.com

SAI

Sydboten & Associates, Inc.

*Geological and Geophysical Consulting,
3-D Seismic Interpretation
For Oil & Gas Exploration*

Ben D. Sydboten, Jr., CPG

124 Heymann Blvd., Suite 202
Lafayette, LA 70503

Office (337) 234-5288
Cell (337) 234-5491

12th Annual Gulf of Mexico Deepwater Technical Symposium

“Resources to Reserves”

August 7 & 8, Hilton New Orleans Riverside

Registration \$200 (NOGS members) <http://deepwaternola.org>

Includes technical presentations, exhibit hall, keynote speakers, management panel discussion, student posters, luncheons both days and a reception Thursday afternoon.

Featured keynote speaker: John Dribus, Schlumberger's Global Geoscience Training Curriculum Director, will present “A Brief Overview of the Geologic History of the Gulf of Mexico with Focus on the Paleogene Deepwater Play “

Geoscience

- Wilcox Structural Variations in Walker Ridge and Keathley Canyon
- Turning the lights on at Deimos
- 4D (Time Lapse) Seismic: Chevron Deepwater Gulf of Mexico Examples for a Value-Added Reservoir Management Tool
- The Great Pliocene Salt Squirt - Mechanics of Folding along the down-Dip Limit of Salt, Gulf of Mexico
- Geophysical Pressure Prediction For Ultra-Deep Wells: When The Reservoir Becomes The Enemy
- Deepwater Analogs

Emerging Technologies

- MMS regulatory perspectives on new technology
- Wide Azimuth Towed Streamer seismic at Mad Dog Field: A Success Story
- Gas Hydrate Production - How Much and How Soon?
- The flexible pipe technology in ultra deep water

Reservoir & Economics

- Jack Well Test: Characterization of the Reservoir Through Pressure Transient Testing
- The Impact of China and India on Oil and Strategic Metal Prices
- The Changing Landscape in Deepwater Gulf of Mexico
- Learnings from the Mars Waterflood
- Petronius A3 Sidetrack - Evaluation of an Infill Drilling Opportunity Using a Multi-Disciplinary Approach
- PVT Calculations and Correlations for Extreme Environments

Drilling

- Recovering Existing Slots and Drilling Challenge on Auger TLP
- Wellbore Strengthening
- Deepwater Challenge drives the Total Systems Approach
- Practices and Results of Drilling Below a Single Skin Production Riser at the Magnolia TLP

Completion

- Next Generation Frac Packing Fluid Technology
- No More Minifrac's???
- A New Approach to High Reliability Gas Lift
- High Overbalance Tubing Swaps

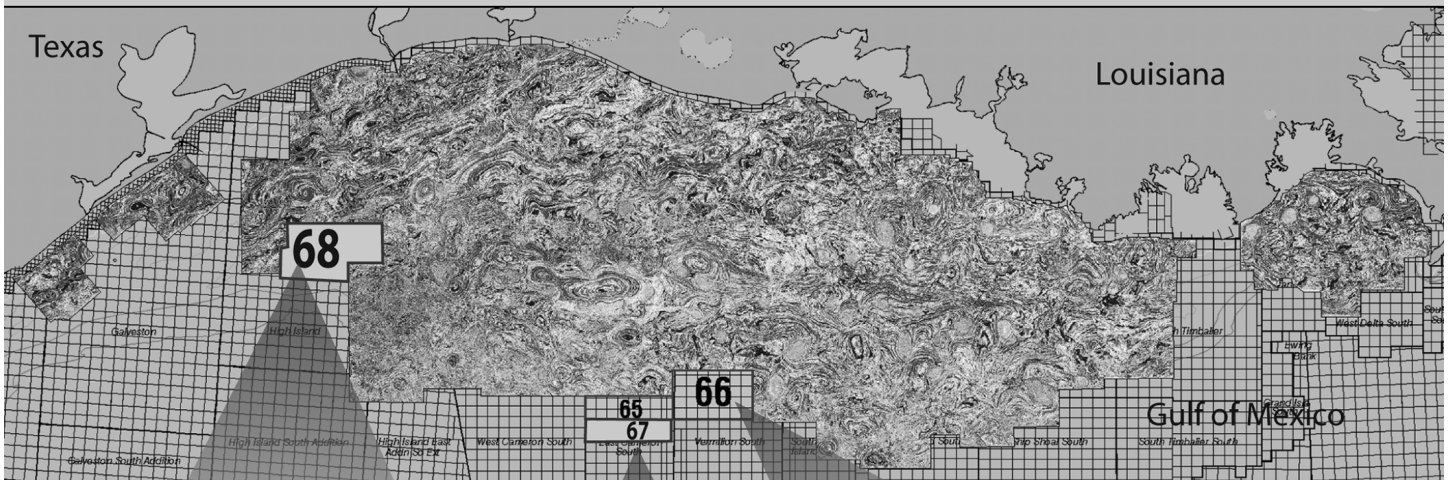
Production Systems

- Test Protocol for Low Dosage Hydrate Inhibitors
- Subsea Production Tie-Back Design
- Fluid Flow Modeling Deepwater Pipeline Infrastructure
- Monitoring Surface Separation Equipment Effectiveness

HSE / Regulatory

- MMS Overview of Deepwater Activities
- The LA1 Project – Securing Access to the Deepwater GOM
- Deepwater Operations Plans and Riser Verifications: A Pipeline Perspective
- Gulf SERPENT: An innovative industrial-academic partnership to explore marine life in the deep waters of the Gulf of Mexico

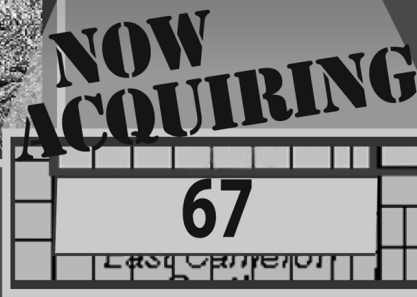
By the time you read this ad, this map will be out of date.



Because our crews are acquiring data every day, all day
to expand Fairfield's 3D data base.



**High Island (68) &
E. Cameron S. (67)**
30,000' offsets,
11 second records
processed in mid 2008



**E. Cameron South (65) &
Vermilion South (66)**
30,000' offsets, 11 second records
processed in January 2008


Visit www.fairfield.com to view Fairfield's multi-client coverage of 3D GOM data.



FAIRFIELD
INDUSTRIES

Houston 281/275-7500
New Orleans 504/525-6400

Proud to be
an American
company



Join us for an evening of
excellent food, conversation, and spirits

NOGS KICK-OFF PARTY

FRIDAY, SEPTEMBER 19TH
7-10 PM

NEW CITY GRILL

2700 Metairie Rd.
Metairie, Louisiana
Valet parking available

\$35 per person
Cash Bar
Door Prizes!

Call the NOGS Office for reservations
504-561-8980



2008 Joint Annual Meeting

Celebrating the International Year of Planet Earth

5 - 9 October 2008 | Houston, Texas, USA | George R. Brown Convention Center

Registration is now open for GCAGS/GCSSEPM 2008

Register as a GCAGS member to receive a free copy of the GCAGS Transactions.

Consider these numbers:

More than 5,500 poster and oral papers... 10 overarching plenary sessions on the most important topics impacting our sciences today, featuring top leaders in our fields... a full schedule with over 450 sessions of programming for five different societies... Sound intriguing?

How about: 33 field trips, scheduled before, during, and after the meeting... 7 tours in and around Houston... 38 short courses/workshops on diverse and relevant topics... more than 300 exhibitors with over 450 exhibit booths displaying and demonstrating the latest technology and research applications... Want more?

Think about nearly 10,000 scientists and students coming together in an unprecedented joint technical program featuring papers from all geological disciplines and the soil, agronomic, and crop sciences. This should prove to be the largest gathering of geoscientists this year

This adds up to one singular opportunity for you.

Come to Houston, Texas, 5-9 October 2008, to celebrate the International Year of Planet Earth. Professionals, students, and media from all over the world will find useful and valuable information at this unprecedented Joint Annual Meeting, held at the George R. Brown Convention Center in Houston, Texas, USA.

The Gulf Coast Association of Geological Societies with the Gulf Coast Section of SEPM, the Geological Society of America, the Soil Science Society of America, the American Society of Agronomy, and the Crop Science Society of America have joined together to highlight and stimulate discussions in areas of common interest across the diversity of disciplines and organizations represented by our members. Areas of mutual interest include energy, water resources, education, and earth systems, to name a few. The meeting is hosted by the Houston Geological Society.

The GCAGS president's reception has been expanded this year and it is a ticketed event to get a good head count. However, the cost is modest and the benefits are great.

Important Links found on <https://www.acsm meetings.org/>:

Online Meeting Registration
Online Housing Form
Joint Events
Field Trips
Tours
Houston Information
International Travel


Important Dates & Deadlines


Early Bird Registration
closes 14 July 2008


Standard Registration
closes 2 September 2008

Childcare Registration
closes 5 September 2008

A Company that Shines

 Geophysical Products

 Geological Products

 Imaging Services



TGS has been providing best-in-class multi-client data and services to successful E&P companies for over a quarter century. Our geophysical and geological data products are distributed around the globe and include one of the youngest and best targeted multi-client seismic libraries, extensive magnetic and gravity data, the industry's largest global database of digital well logs, and regional interpretive products. We also provide high-end depth imaging services to help resolve complex seismic imaging problems. Together, our products and services give you a more complete picture of the subsurface to help your exploration program *shine*.

For more information, visit www.tgsnopec.com today.



Geological
Products



Geophysical
Products

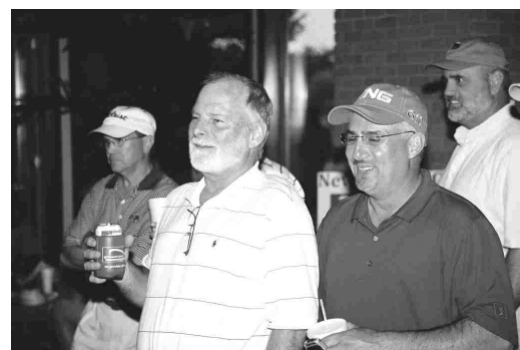


Imaging
Services

www.tgsnopec.com

NORWAY +47 66 76 99 00 | USA +1 713 860 2100 | UK +44 (0) 1234 272122 | AUSTRALIA +61 8 9480 0000 | RUSSIA +7 495 959 8117
©TGS-NOPEC Geophysical Company. All Rights Reserved.

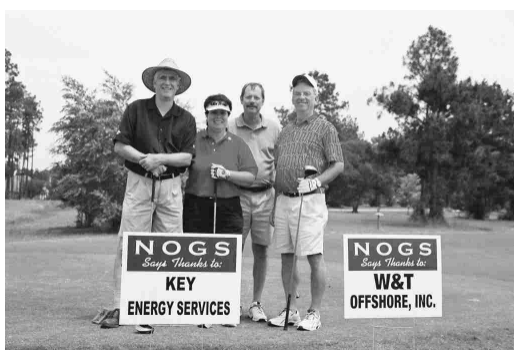
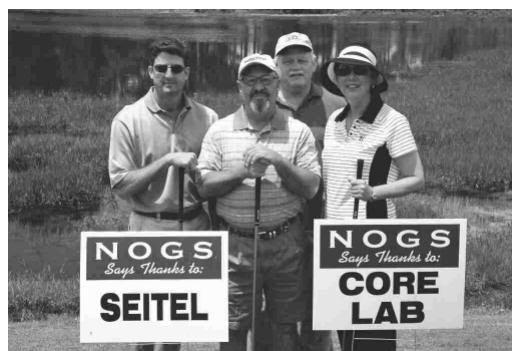
2008 NOGS Golf Outing

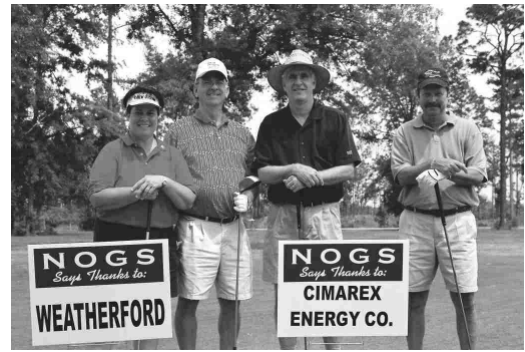




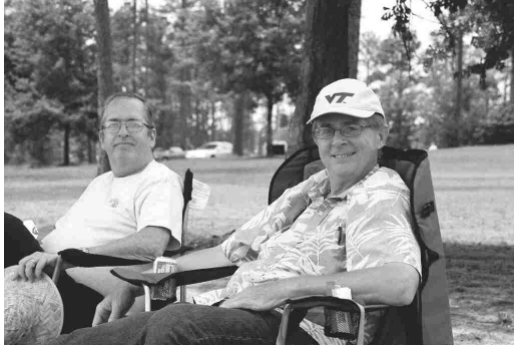


A special thank you to ...









South Louisiana and Offshore Exploration and Production Activity

DRILL BITS

- **Hess Corporation** on 5-June announced the successful completion of an appraisal well at its 100% interest Pony discovery located on GC 468 in the Gulf of Mexico. Hess acquired the block for a bonus of \$35,290,892, the highest bid in OCS Sale 190, in March 2004.

The Pony #2 ST well (MTD 33,362 feet) encountered the same objective sands as Pony #1 and #2. The ST appraisal, drilled in 3,413 feet of water, from a surface location 7,400 feet northwest of the 2006 discovery (MTD 32,448 feet - with 475 feet of oil-saturated Miocene reservoirs) encountered the main pay sand oil-filled throughout the interval drilled.

This appraisal is part of a comprehensive ongoing data gathering program being conducted by Hess over the Pony prospect. Recoverable resources are now estimated to be approximately 200 MMBOE, significantly constrained from the original estimate of 100-600 MMBOE and the narrowed range following the drilling of Pony #2 that encountered the objective target sands in a down-dip position in the water leg earlier this year.

Pony appears to be the northern part of the Knotty Head structure (GC 512 & 511) whose resources are estimated by its operator, Nexen, to range between 200 and 500 MMBOE, and where appraisal drilling has been hampered by the lack of a rig.

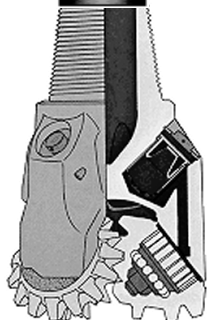
- **McMoRan Exploration Co.** on 12-June announced its fourth successful well, Flatrock #4 ("C" location), at the Flatrock field, OCS 310 at SMI 212, in ten feet of water. This infill development well, which was spudded on 9-April, is located between the Flatrock #1 discovery and the Flatrock #2 wells. As of the announcement date, the #4 well had been drilled to 15,315 feet. LWD tools had indicated hydrocarbon-bearing sands in the proven hydrocarbon column in the Rob-L section approximating 135 net feet over a total gross interval of ~246 feet. The well is being deepened to a PTD of 18,500 feet to evaluate additional targets in the Rob-L and Operc sections.

The Flatrock #3 delineation well was drilled to 18,587 feet and will be completed in the Operc section. Wireline logs confirmed that the well encountered a total of 256 net feet of hydrocarbon pay.

As previously announced by McMoRan, two additional successful wells were drilled in the Flatrock Area. The initial discovery well came online in January 2008, at a gross rate of 50 MMCFGE/D. The Flatrock #2 well was tested in a Rob-L sand at a gross rate of 114 MMCFGE/D, and is expected to commence production mid-year 2008.

The Mound Point East exploratory well on Louisiana SL 340 was spudded on 31-March 2008, and drilled to 17,000 feet before encountering mechanical problems. Bypass operations were under as of 12-June. The well has a PTD of 18,050 feet, targeting Operc sands of Middle Miocene age. The well, in less than 10 feet of water, is ~10 miles east of the Flatrock field. McMoRan is targeting deep geologic features in the area similar to those discovered in the Flatrock field.

The ST 168 #1 well, formerly known as the Blackbeard West #1, an ultra-deep exploratory well, had been drilled to 31,943 feet, at which point casing had been set in early June. McMoRan plans to deepen the well to evaluate the primary targets, and will apply to MMS to re-permit the well to a depth of 35,000 feet. McMoRan



operates the well and owns a 32.3% WI. Partners include Plains Exploration & Production Company (35% WI) and Energy XXI (20% WI).

- On 16-June, **W&T Offshore** (60% WI and operator) announced that it has sanctioned for development its 2004 discovery, "Daniel Boone", in GC 646. The discovery well was drilled to a MTD of 12,365 feet and encountered approximately 275 feet of high-quality oil and gas bearing sands. "Daniel Boone" is located approximately 119 miles off the coast of Louisiana in 4,230 feet of water. W&T intends to produce the well via a subsea production system tied back to the Front Runner spar, which is operated by Murphy Oil.
- **Mariner Energy, Inc.** on 17-June announced a deepwater discovery at its Geauxpher prospect located on GB 462. The well, in approximately 2,700 feet of water, was drilled to a MTD of 23,156 feet. Mariner estimates the field's gross proved and probable reserves on the block to be approximately 100 BCFG. Development is underway with initial production expected as soon as year-end 2008.

Mariner (60% WI and operator) farmed into Geauxpher in November 2007, providing the rig to test the prospect. The drilling rig remains on location and a second well is planned to delineate the extent of the discovery. Mariner has identified additional potential on the block and expects to test these amplitudes over time. Apache Corporation holds the remaining 40% WI.

- **Brigham Exploration Co.** (50% WI) on 18-June announced that the first of six wells it plans to drill as part of its Southern Louisiana joint venture with Clayton Williams Energy, Inc. (50% WI) was an apparent discovery.

The SL 18826 #1, drilled in the Main Pass Area, encountered approximately 100 feet of apparent Miocene pay in four intervals at depths between 7,140 and 7,680 feet. Excellent permeabilities, and apparent porosities as high as 30%, were encountered. Completion operations are underway and production to sales is expected in August.

Upcoming wells, the SL 19312 #1 and SL 19054 #1 will also target Miocene objectives at depths of 9,300 and 7,600 feet, respectively.

- In late June, **StatoilHydro** announced that it may "farm down", or invite partners to participate in some of its Gulf of Mexico exploration assets after acquiring a large portfolio of deep-water acreage. StatoilHydro would continue as operator of the leases.

"Last year we participated successfully in three lease sales in the Gulf of Mexico so now it is natural that we consider a farm down or portfolio adjustments of some of these leases," said StatoilHydro spokeswoman Kjersti Morstoel. She declined to give the number of projects and available interests.

She said StatoilHydro has 100% ownership in most of the new acreage and would consider bringing in partners "if that would bring something positive".

She said StatoilHydro may be the fifth largest holder of deepwater Gulf of Mexico assets.

Separately, financial group Scotia Waterous said on its website (www.waterous.com) that StatoilHydro had retained it as exclusive financial adviser for the farm down.

The GoM is a "core area" for StatoilHydro's international production in the future. It is the operator of the Q deepwater field in the MC area and also has interests in five producing fields, which yield about 20,000 BOPD.

StatoilHydro has two Mexico Gulf development projects - Tahiti and Thunder Hawk - both due for 2009 start-up. It is also a licence-holder in the Walker Ridge area and has interests in the Jack and St. Malo discoveries and the Green Bay prospect.

- Paul Post

Gulf Coast Association of Geological Societies *TRANSACTIONS*

Now available on a single DVD! This disk includes a fully searchable archive of the Transactions from the first meeting in 1951 through the recent conventions. It replaces the set of CDs that were previously available, updates through the more recent meetings (the CDs covered 1951 through 2003) and utilizes current search software. The DVD is available through the GCAGS Bookstore at the Bureau of Economic Geology or through AAPG-Datapages – purchase and contact information below.

The purchase price of the DVD is \$250.00, but for holders of the old CD set, a major discount is available if the DVD is purchased through Datapages (note – special discount NOT available through the Bureau of Economic Geology). If you send in a 1998 or 2001 Master Disc, your cost for the DVD is \$75.00. If you had the latest version of the CD set, send in the 2003 Master Disc and the DVD is free!

Order from GCAGS Bookstore:

Visit the BEG Bookstore web site for order forms and instructions at
<http://www.beg.utexas.edu/mainweb/publications/pubs-toorder.htm>

Order from AAPG-Datapages:

e-mail - aapgdata@aapg.org
phone - (918) 560-9423
fax - (918) 560-9418
mail - AAPG/Datapages, 1444 South Boulder Ave., Tulsa, OK 74119
or
P.O. Box 979, Tulsa, OK 74101

BIG BANG BLAMED ON SOFTWARE UPGRADE! [Should Have Used KINGDOM®!]

**Avoid system-wide consequences
from upgrading your geoscience software.**

KINGDOM, from SMT, gives you the best in technology today without requiring that you abandon existing solutions. It's easy to use, coexists with your current software, and provides cutting edge, scaleable functionality - getting you productive quickly! In fact, 9 of 10 customers surveyed say KINGDOM is easier to use than the competition.

No wonder KINGDOM is the industry leader for PC-based interpretation. And our reputation is...expanding.



Visit our Web site at www.seismicmicro.com/smt-bigbang10 and learn why KINGDOM 8.2 is the market leader for PC-based interpretation with over 2,500 companies in 85 countries.



Intuitive. Integrated. Interpretation.

America +1 (713) 464-6188 Asia +65 6220 1089 Europe +44 (0) 20 8240 6524

CENTRAL AND EASTERN GULF REGION
PETROLEUM TECHNOLOGY TRANSFER COUNCIL

NEW ORLEANS GEOLOGICAL SOCIETY and

THE AMERICAN ASSOCIATION OF PETROLEUM GEOLOGISTS

Announce a Technology Workshop

“Sequence Stratigraphy and Its Application to Petroleum Exploration in Onshore Mesozoic Salt Basins, Gulf Coastal Plain”

**Shell Auditorium, One Shell Square
701 Poydras St., New Orleans, LA**

**August 12, 2008
9:00 AM–3:00 PM**

Workshop Description

The formulation of a chronostratigraphic framework is fundamental to the correlation of strata, for the interpretation of the geologic history of a region, and in the development of a petroleum exploration strategy for a sedimentary basin. Third-order (1 to 10 million years in duration), unconformity-bounded depositional sequences as recognized in seismic reflection sections are generally utilized to provide the sequence stratigraphic component in establishing such a framework. These depositional sequences have provided a reliable means to perform stratigraphic analysis and to correlate marine facies deposited in shelf environments (transgressive and highstand systems tracts deposits) with those that accumulated in slope and abyssal plain environments (lowstand systems tract deposits). In studying Upper Jurassic and Cretaceous strata from shelfal areas of the Gulf Coastal Plain that are characterized by Mesozoic non-marine to marine siliciclastic and carbonate deposition and in which stratal patterns are driven by low-frequency, tectonic-eustatic events associated with post-rift, passive margin conditions, a stratigraphic analysis based on transgressive-regressive (T-R) sequences integrated with biostratigraphy has utility as a method for establishing a chronostratigraphic framework for petroleum exploration in the interior salt basins of the Gulf Coastal Plain. The purpose of this workshop is to demonstrate the utility of employing a T-R sequence stratigraphic methodology in exploring for oil and gas in the Mesozoic basins of the Gulf Coastal Plain. This is accomplished through examination of case studies for Upper Jurassic, Lower Cretaceous and Upper Cretaceous strata. The workshop will be conducted by Ernest A. Mancini, University of Alabama.

It is essential that we have an accurate accounting of those who plan to attend the workshop. Therefore we request a reply no later than August 8, 2008. Please send in the attached form with payment to PTTC or email at the address below confirming your interest to attend.

**Attn. Versa Stickle : LSU Center for Energy Studies,
Energy, Coast & Environment Bldg. Nicholson
Extension, Baton Rouge, LA 70803**

Email: vstickle@lsu.edu; Phone 225 578 4546

Workshop Registration Form— August 12, 2008
(Please type or print requested information and provide complete mailing address.)

Name		
(Last)	(First)	(Middle)
Affiliation		
Mailing Address		
City	State	Zip Code
Telephone	Fax	E-mail
Preferred Name on Badge		

There is a \$100 registration fee to attend the workshop. Please make your check payable to: PTTC. We look forward to your participation.

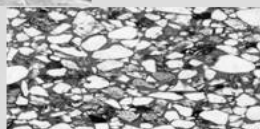
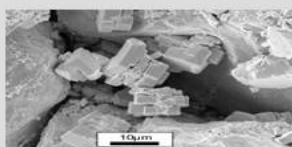
Complex Reservoir Evaluation?

Log Calibration SATURATION MODELING PVT Analysis
 Reservoir Performance FRACTURE DESIGN Sand Control
 Completion Design Flow Assurance Borehole Stability
 Reserve Estimates COMPREHENSIVE CORE ANALYSIS

Simple Solution: Rely on Experience!

Rely on Core Laboratories!

- Comprehensive core analysis laboratory and wellsite services
- Comprehensive reservoir fluid laboratory and sampling services



New Orleans: 504-733-6583

Lafayette: 337-837-8616

Houston: 713-328-2673

www.corelab.com

SURVIVOR™

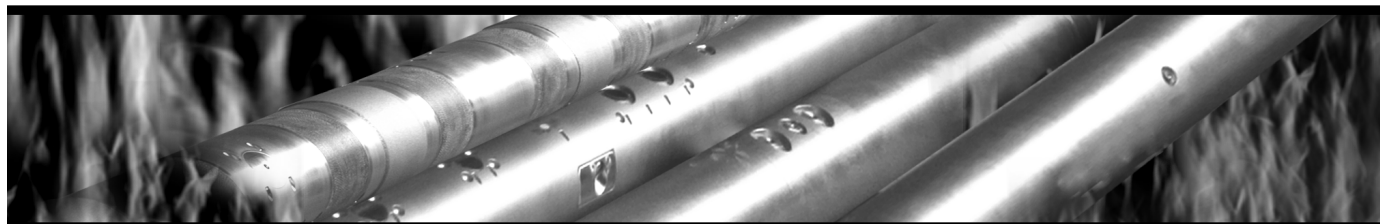
LOGGING-WHILE-DRILLING SUITE

The SURVIVOR™ Suite uses our highly reliable HDS-1 Directional Gamma Ray technology, Array Wave Resistivity tool, Slim Density Neutron Standoff Caliper tool and our Dynamic Pressure Module to create a complete system for logging in hostile drilling environments.

Temperature Rating.....350°F (175°C)

Pressure Rating25,000 psi

Logging Capacity300+ circulating hours



RELIABILITY. ACCURACY. VERSATILITY. WE DELIVER.

e-mail: pfmarketing@pathfinderlwd.com

www.pathfinderlwd.com

© 2006 Pathfinder Energy Services, Inc. All rights reserved.

PATHFINDER®

- **Mount St. Helens Slumbers Once Again:** The U.S. Geological Survey has announced that the volcano alert level at Mt. St. Helens has been lowered from Advisory to Normal after nearly three and one-half years of eruption. The volcano, which erupted violently in 1980, killing 57 people, began to erupt again in October 2004. Continuous monitoring showed that growth of a lava dome continued until late January 2008.

Approximately 125 million cubic yards of new lava erupted onto the crater floor between October 2004 and late January 2008, forming a new dome. A similar amount flowed from the 1980s lava dome during the recent event. Since 1980, lava has refilled about 7% of the crater that was created by the catastrophic lahar and eruption of May 18, 1980.

Even though the eruption alert level has been lowered, hazards persist due to the instability of the new lava dome. High temperatures at the dome are capable of producing avalanches and minor explosions that could dust areas with ash within a 50-mile radius of Mt. St. Helens. Mass wasting from crater walls can generate dust clouds that ascend above the volcano on dry, windy days. Heavy rainfall or rapid snowmelt could potentially initiate debris flows and mud flows north of the 1980 crater.

From: <http://www.usgs.gov/newsroom/article.asp?ID=1971>

- **Earth's Magnetic Field Affected by Movements in the Liquid Outer Core:** Nils Olsen, Senior Scientist with DTU Space, and several German scientists have mapped some surprisingly rapid changes in the movements in the Earth's core using a 9-year record of precise measurements of the Earth's magnetic field from the Ørsted satellite. The results have just been published in the journal Nature Geoscience. The most surprising of which were that rapid, sudden changes take place in the Earth's magnetic field suggesting that similar rates of change occur deep in the Earth's core.

The core is composed of two zones: an inner solid core surrounded by the outer liquid core. The outer core is approximately 3,000 km from the Earth's surface. Both zones are primarily composed of iron and nickel. Movements liquid zone are have been suggested as the source of the Earth's magnetic field. Scientists relate the satellite measurements of the magnetic field to movements in the liquid inner core. The measured rapid changes in the magnetic field are being applied to better understand deep Earth processes.

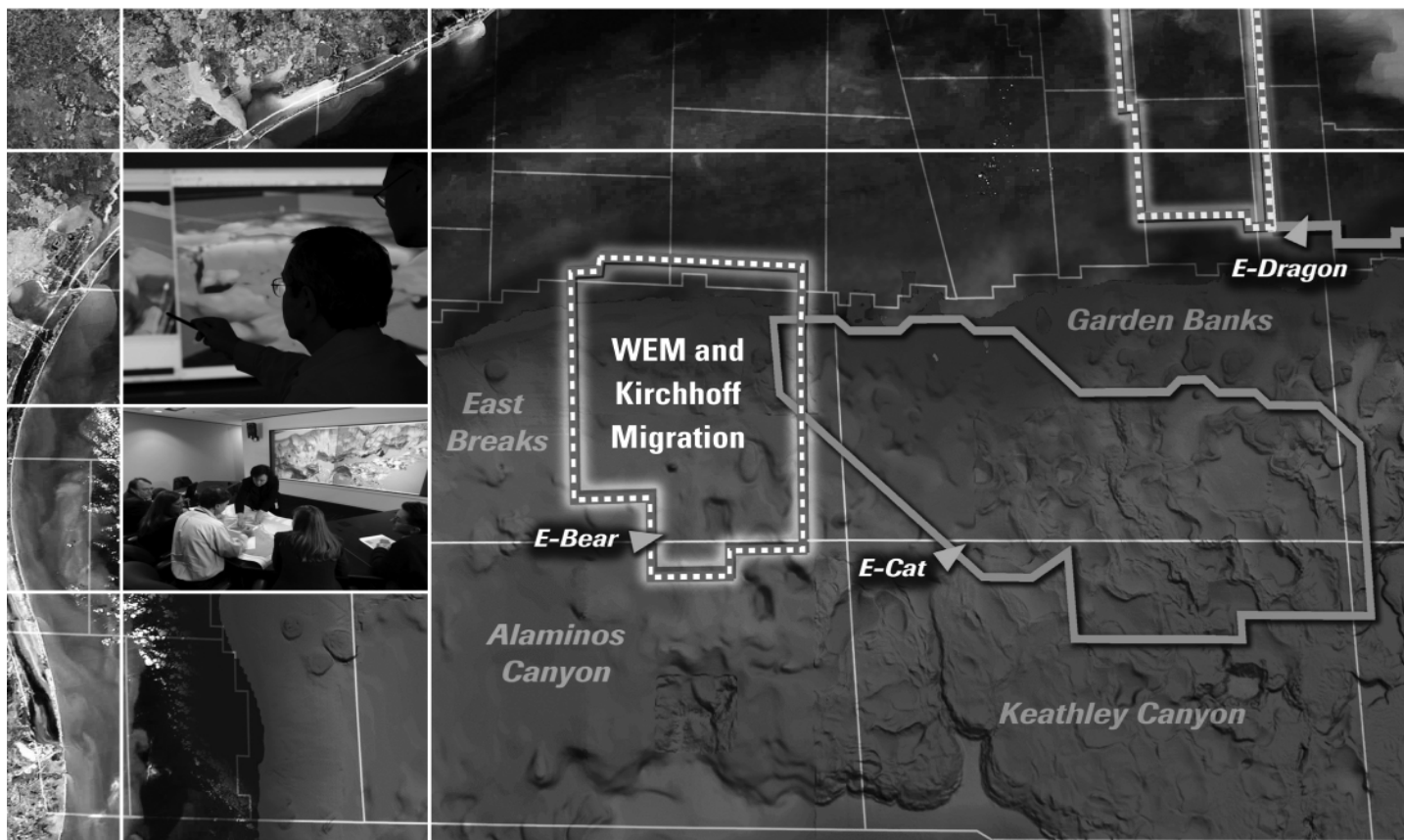
A successor to the Ørsted satellite mission, Swarm, is in the planning phase by DTU space and other European scientists. The Swarm mission will consist of three satellites that will focus on measuring the magnetic field with higher precision than just Ørsted. By integrating measurements from multiple platforms, the scientists hope to better constrain the timing of liquid core movements and understand driving mechanisms for these movements.

Olsen et al. Rapidly changing flows in the Earth's core. Nature Geoscience, 2008; 1 (6): 390.

From: ScienceDaily. Retrieved July 14, 2008, <http://www.sciencedaily.com/releases/2008/06/080619102553.htm>

- *Clare Falcon*

Expand your opportunities ...



Announcing **E-Bear** our Newest Gulf of Mexico Seismic Imaging Product.

Multiclient^E

Experience the industry-leading benefits of WesternGeco survey design, marine acquisition, and state-of-the-art processing – designed to enhance your western Gulf of Mexico subsalt image requirements.

Delivering both anisotropic WEM and Kirchhoff volumes:

- Processing and remigration of six legacy surveys spanning 428 OCS blocks
- High-quality time imaging using relative amplitude anisotropic prestack time migration along with high-quality structural images utilizing anisotropic prestack depth migration.

Excellence in technology – Experienced professionals.

To learn more about our Gulf of Mexico Multiclient products and our new acquisition projects, call +1 713 689 1000.

Multiclient to the Power of E

www.slb.com/westerngeco



*Mark of Schlumberger © 2008 Schlumberger 08-SE-044

THE NEW ORLEANS GEOLOGICAL SOCIETY MEMORIAL FOUNDATION, INC.

The Memorial Foundation is an IRS Tax Exempt Code #501 (c)(3) organization. The Federal I.D. is: 72-1220999. Please consider making your donation prior to the close of this year's fiscal cycle which is September 30, 2008. Your individual support in any amount will help meet the IRS Guidelines for our Foundation. *Thanks!*

\$15,000 AND ABOVE

Olga Braunstein Succession
Gibbett Hill Foundation
In Memory of Steve & Marion Millendorf,
William J. Prutzman, Roger G. Vincent & Ron Youngblood

\$10,000

The Booth-Bricker Fund
In Memory of Richard W. Boebel

\$7,000 TO \$9,000

GCAGS Matching Funds
Paul C. Mc Williams

\$3,000 TO \$4,000

NOGS Golf Tournament May 2007
In Memory of Bill Craig

\$1,000

C & R Exploration, Inc.
In Memory of Richard W. Boebel
Thornton E. Anderson
In Memory of Richard W. Boebel

\$500

Carlo and Beverly Christina
In Memory of Richard W. Boebel
Joanne J. Clark and Family
In Memory of Richard W. Boebel
Joffre J. Crouere
In Memory of Richard W. Boebel

\$2,000

Bridwell Oil Company
In Memory of Richard W. Boebel

\$600

Richard W. Boebel

\$250 TO \$499

Carlo C. Christina
In memory of Robey H. Clark
In Memory of Al Gilreath
In memory of Allen R. Stern
Seismic Exchange, Inc.
In Memory of Richard W. Boebel
Carol and Gilbert St. Germain
In Memory of Richard W. Boebel

UP TO \$249

John Edward Allen, Jr.
Don and Carol Andrews
In Memory of Thomas H. Philpott
In Memory of William B. Rodan
Donald I. Andrews
In Memory of T. Wayne Campbell
Robert J. Ardell
In Memory of Robert W. Sabate'
Memory of Richard W. Boebel
In Memory of Francis X. Bland
Peggy and Robert Armstrong
In Memory of Richard W. Boebel
Edward C. Austin
In Memory of Charles L. Jones
Bruce Bahlinger
In Memory of Thomas H. Philpott
Al and Susie Baker
In Memory of Robert W. Sabate'
Jack R. Bantari
Abraham Biadgelgne
Maurice N. Birdwell
In Memory of Jim Davis
Cynthia A. Bradford
Eric C. Broadbridge

Hilary James Brook
Robin A. Broussard
In Memory of Charles L. Jones
In Memory of Thomas H. Philpott
Jack G. Bryant
Rob Burnett
Chevron
Matching Funds
Arthur F. Christensen
Ellen F. Clark
James S. Classen
In Memory of All Gilreath
Clarence F. Conrad
Willis E. Conatser, PhD
Charley and Trudy Corona
In Memory of Mary Kirk Barrell
Charley Corona
In Memory of Charles L. Jones
In Memory of McLain Forman
In Memory of Richard W. Boebel
Michael A. Danahy
Robert M. Danos
In Memory of Robert W. Sabate'
M. R. "Bob" Douglass

FONO FUND

The FONO Fund accepts contributions that are invested and the income dedicated to assure sufficient financial resources will always be available to maintain the NOGS business office. Contributors are reminded that donations to the FONO Fund are not covered by the IRS 501 (c)(3) tax exempt classification and should be reported as a business expense on your IRS tax report.

\$600

Richard W. Boebel
Willis E. Conatser

\$500

James A. Hartman
In Memory of Robert W. Boebel
In Memory of Robert W. Sabate'

UP TO \$249

Woods W. Allen, Jr.
Donald I. Andrews
Alfred H. Baker Jr.
Philip Beron, Jr.
Joseph E. Boudreaux
Cynthia A. Bradford
Eric C. Broadbridge
Hillary James Brook
Jack G. Bryant
In Memory of Shelby W. Smith
J. Sybil Calloway
Anthony Carollo Jr.
Arthur F. Christensen
James S. Classen
Richard P. Colomes
Clarence F. Conrad
Joffre J. Crouere
John Dombrowski
Merle J. Duplantis
Richard A. Edmund
Parrish N. Erwin, Jr.
Niles R. Faulk
Michael N. Fein
Laurens Gaarenstroom
Mark J. Gallagher
Arthur J. Garden
Duncan Goldthwaite
Peter G. Gray
Bernard L. Hill, Jr.
Owen R. Hopkins

Thomas A. Hudson
Kenneth Huffman
Paul Jurik
Tom Klekamp
Richard G. Klibert
William J. Malin
Jeannie F. Mallick
George M. Markey, Jr.
Louis L. McCormick
Robert G. Murphy
William J. O'Leary
Richard A. Olsen
William S. Peirce
Edward B. Picou, Jr.
In Memory of Robert W. Sabate'
Jaser N. Rafidi
James P. Raymond, Jr.
Brenda E. Reilly
C. R. Rondeau
Monte C. Shalett
Rudolf B. Siegert
Raymond Stephens
Stephen Szydluk
Scott A. Wainwright
Roy C. Walther
Arthur S. Waterman
Robert C. Weissmann
Louis E. Willhoit, Jr.
James W. Yeldell Jr.
Jim Zotkiewicz

CONTRIBUTIONS FOR BOTH FUNDS
THROUGH JULY 17, 2008.
DONATIONS ARE LISTED FOR ONE YEAR.

Merle J. Duplantis
George H. Evans
Exxon Mobil Matching Funds
Michael N. Fein
Brent J. Foster
In Memory of Robert W. Sabate'
Laurens Gaarenstroom
Sherwood M. Gagliano
Mark J. Gallagher
David Garner
Peter G. Gray
Angela M. Hessler

Bernard L. Hill, Jr.
In Memory of Robert E. Osborne
Owen R. Hopkins
John H. Houser
Dan E. Hudson
Thomas A. Hudson
Kenneth Huffman
Thomas E. Johnson
Tom Klekamp
In Memory of Robert W. Sabate'

---continued on page 34---

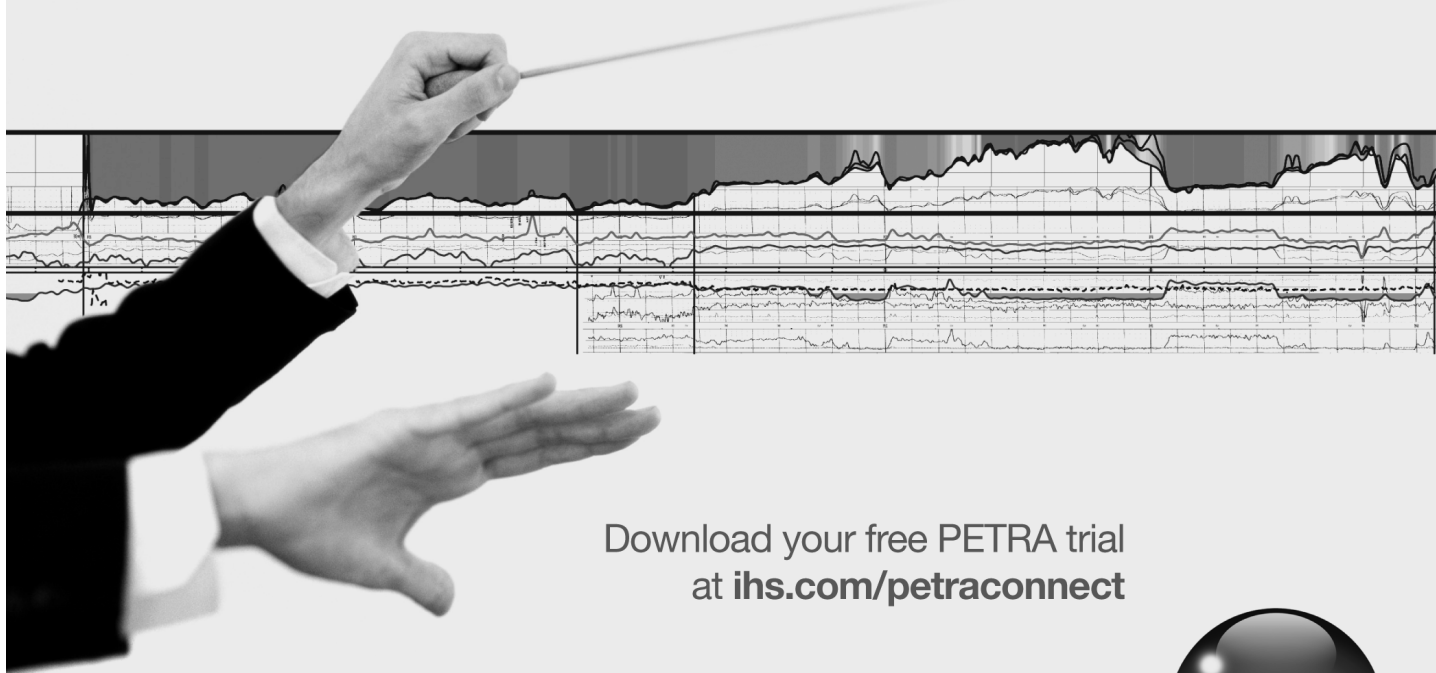
PETRA®

Conduct your search for oil & gas with clarity and confidence.

“IHS data and PETRA: the beauty is in the
integration of data, software and disciplines.
With PETRA we can bring it all together; making
it do what we need it to. It's that simple.”

Tom Perkins
Chief Geologist, Ivanhoe Energy

PETRA provides multi-discipline reservoir management teams with the analysis
tools needed for today's exploration, exploitation and acquisition challenges.



Download your free PETRA trial
at ihs.com/petraconnect



The Source
for Critical Information and Insight

©2008 IHS Inc. All rights reserved.



Shoreline Gas Inc.
www.shorelinegas.com
Full Service Natural Gas Marketing

ALBERT P. BROWN, P.G.

GEOPHYSICAL CONSULTANT

Texas Board Certified Licensed Professional Geoscientist

Interpretation
Depth Imaging/Signal Enhancement
(504) 561-8690 cell: (504) 296-8877
brownapl@bellsouth.net



Collarini Energy Staffing Inc.

**Full-Time and Temporary
 Exploration and Production Personnel**

Facilities · Drilling · Production · Reservoir Engineers
 Landmen · Geoscience · Information Technology
 Health and Safety · Management · Procurement
 Accounting · Administrative Support

Houston and New Orleans
 (832) 251-0553 · Fax (832) 251-0157
 www.collarini.com

Connecting the Industry's Experts



Collarini Associates

4200 South I-10 Service Road, Suite 230
 Metairie, Louisiana 70001
 (504) 887-7127
 (504) 887-7162

Reservoir Engineering
Oil & Gas Property Evaluation
3-D Seismic Interpretation
Integrated Field Studies

New Orleans ■ Houston
 www.collarini.com



625 E. Kaliste Saloom
 Lafayette, La 70508

18900 Greenspoint Dr, Suite 225-S,
 Houston, Tx 77060

www.stoneenergy.com



CIMAREX ENERGY CO.

GULF OF MEXICO REGION
GOM, SE La., N. La., MS, AL

1100 Poydras St.; Suite 1100

Keith Gourgues

New Orleans, Louisiana 70163

Region Manager

504-586-1815 / Fax 504-586-9035

(832) 242-6000 (O)
 (713) 917-0493 (O)

(504) 931-7506 (C)
 johnjurasin@jurasinoilgas.com

NORTHCOAST OIL COMPANY

610 E. Rutland St.
 Covington, LA 70433
(985) 898-3577
(985) 898-3585 FAX


Jack M. Thorson
Eric C. Broadbridge
J. Daryl Gambrell
Raymond W. Stephens

JURASIN OIL & GAS

9700 Richmond Ave., Suite # 124
 Houston, TX 77042-4821

JOHN M. JURASIN
 President

Cert. Pet. Geologist #4284
 Cert. Prof. Earth Scientist #1961

ANSYTHE Donald I. Andrews 504-887-3432 	D-O-R ENGINEERING, INC. 3-D and Geoscience Services 120 Oil Center Dr., Bldg. 12 P.O. Box 51707, Lafayette, LA 70505 Bus. (337) 233-2378 Fax (337) 233-2907
THE BOEBEL COMPANY Oil and Gas Investments 170 Broadway Street, Suite 321 New Orleans, LA 70118 (504) 866-4313	EDWARD B. PICOU, JR. Consulting Micropaleontologist - Retired 228 St. Charles Ave., Suite 1330 C New Orleans, LA 70130 Bus. (504) 529-5155 Res. (504) 282-3096
BOO-KER OIL & GAS CORP. Gray S. Parker 826 Union, Suite 300 New Orleans, LA 70112 Bus. (504) 581-2430 Fax (504) 566-4785	H. WARREN BELL Oil and Gas Exploration 2500 Tanglewilde, Suite 485 Houston, TX 77063-2126 Bus (713) 266-7297 Fax (713) 266-7298
C & R EXPLORATION, INC. Carlo C. Christina Lawrence G. Ringham	PHELPS GEOSCIENCE Onshore Gulf of Mexico Geology and Geophysics Prospect Generation and Evaluation Houston, TX jsfphelps@yahoo.com (281) 398-5208
C. R. RONDEAU Petroleum Geologist 119 W Southland Ave. Ironwood, MI 49938 Res. (906) 932-4692	RAFIDI OIL AND GAS, INC. Jaser N. Rafidi, President 4415 Shore Dr., Suite 202 Metairie, LA 70006 Bus. (504) 722-2942 Fax (504) 888-5539; Res. (504) 888-1661
CLASSEN EXPLORATION, INC. James S. Classen Looking for close in deals P.O. Box 140637 Boise, ID 83714 classenllc@msn.com Bus. (208) 854-1037 Fax (208) 854-1029	ROY C. WALTHER Petroleum Geologist 2421 Prancer Street New Orleans, LA 70131 Bus. (504) 392-8513 Res. (504) 392-9332
COLLES C. STOWELL Oil and Gas Consultant 22 Sea St. Manchester, MA 01944 (978) 526-1286	TONY CAROLLO Consulting Geologist Unitization Geosteering Field Studies 1701 Peach Street Metairie, LA 70001 Bus. (504) 885-0004 Res. (504) 885-6829

Memorial Fund donations, continued from page 31:

Richard G. Klibert
John C. Kucewicz, Jr.
Russell J. Landry
In Memory of Ken Savage
John C. Langford
In Memory of Robert W. Sabate'
William J. Malin
Jeannie F. Mallick
George M. Markey, Jr.
Catherine D. McRae
Casey R. Mobley
David C. Mount
Robert G. Murphy
New Orleans Geological Auxiliary
In Memory of Mary Kirk Barrell
Russell H. Nordwell
Richard A. Olsen
In Memory of Richard W. Boebel
In Memory of Robert W. Sabate'
William S. Peirce
Edward B. Picou Jr.
In Memory of Richard W. Boebel
In Memory of Robey H. Clark
Jaser N. Rafidi

Brenda E. Reilly
Edmund L. Russell
In Memory of Francis X. Bland
George W. Schneider, Jr.
In Memory of William B. Rodan
George D. Severson
Robert C. Shoup
Monte C. Shalett
Rudolph B. Siegert
In Memory of Richard W. Boebel
In Memory of Robert W. Sabate'
Daniel L. Smith
Dr. J. O. Snowden
Dave Sollenberger
In Memory of Des Utterback
Raymond O. Steinhoff
In Memory of Robert S. Wood
In Memory of Harold E. Voke
Candace V. Strahan
In Memory of James Strahan
Stephen Szydluk
Patrick F. Taylor Foundation
Employee Matching Gifts Program
Scott A. Wainwright

Roy C. Walther
Arthur S. Waterman
William M. Whiting
Whitney National Bank Officers and Directors
In Memory of Richard W. Boebel
Louis E. Willhoit, Jr.
Armour C. Winslow
In Memory of Rita Menzel Winslow
Frances A. Wiseman
In Memory of Steve Widdicombe
Jim Zotkiewicz

Bill Craig Memorial Fund
Robin A. Broussard
Chevron
M. R. "Bob" Douglass
Bernard L. Hill, Jr.
Jeff Jandegian
John C. Scheldt
Candace V. Strahan
In Memory of James Strahan

Luncheon "Roundup" Donations

PGS. Clearly Better.

Crystal continues...

Wide Azimuth Multi-Client 3D

- » 580 deepwater Gulf of Mexico blocks
- » Ramform technology and efficiency advantages
- » Proven portfolio of Wide Azimuth data processing technologies
 - » Full Azimuth Tomography
 - » 3DSRME
 - » Pre-stack Depth Migration
 - » Kirchhoff
 - » WEM
 - » Beam
 - » RTM

Osl
Tel: 47-67-52-6400
Fax: 47-67-52-6464

London
Tel: 44-1932-260-001
Fax: 44-1932-266-465

Houston
Tel: 1-281-509-8000
Fax: 1-281-509-8500

Singapore
Tel: 65-6735-6411
Fax: 65-6735-6413

A Clearer Image
www.pgs.com



SEE YOUR DATA IN A WHOLE NEW LIGHT!

Take the pressure out of exploration
and drilling by seeing what you
are going to encounter.



eSeis

www.e-seis.com
713.531.1447

- Lithology & Fluids
- Depositional Facies
- Pore Pressure from V & Q
- Well Planning Consultation

MARINE PROPERTIES, LLC BERKSHIRE EXPLORATION CO.

MONTE C. SHALETT, CPL, PRESIDENT

3030 Lausat Street
Metairie, LA 70001-5924

BUS. (504) 831-7779
FAX. (504) 831-8315

PCI

Paleo Control, Inc.

Houston, Texas
713-849-0044

Drilling Wells, Studies and Data Base

Loyd Tuttle

Frio, SE Texas

Bob Liska

Wilcox, S and SE Texas

Jim Thorpe

Miocene and Cam-Miogyp



WWW.NOGS.ORG

NEW ORLEANS GEOLOGICAL SOCIETY



810 Union Street, Suite 300
New Orleans, LA 70112-1430

DATED MATERIAL