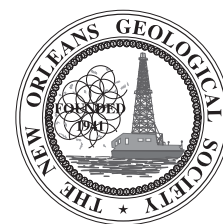


NOGS LOG

WWW.NOGS.ORG



Official Publication of the New Orleans Geological Society, Inc.

October 2007

Volume 48, Number 4

Upcoming Events and Activities

October 8 - NOGS Luncheon

Tom Kratochvil, Senior Staff Geophysicist, and Jeff Scheibal, Senior Staff Petrophysical Engineer, both with Shell Exploration & Production Company, Inc., will present: "Greater Auger Area Case Study: The Relationship Between Pore Pressure, Seismic Stratigraphy and Biostratigraphy."

(See Page 7 for Abstract and Biographies)

LE PAVILLON HOTEL

Check with concierge or
front desk for location

Lunch served at 11:30am

ADMISSION:

with reservation \$30.00

without reservation \$35.00

Student Member with reservation Free

October 19 - The GOLD Party

Old U.S. Mint Reopening Celebration, Louisiana State Museum, 400 Esplanade Ave.
Patron Party 6:30-8:00 p.m., Main Party 8:00 p.m.-Midnight. Announcement on page 17.

October 26 - Tulane Geology Annual Alumni Party

101 Blessey Hall, 6:00-9:00 p.m. Come see our new location!

R.S.V.P. by October 12 (504)865-5198

November 8 - NOGS/SGS Joint Society Meeting

This meeting will replace the November NOGS luncheon, and will be held on Thursday, November 8th, 11:00 am at Le Pavillon. Jerry Kapoor, of WesternGeco, will present "Subsalt Imaging - RAZ/WAZ Experience." Contact the NOGS Office to make your reservation.

November 13 - API-Delta Chapter Joint Society Luncheon

Royal Sonesta Hotel, 11:00 AM, \$30 per person. Guest speaker for this luncheon is New Orleans journalist and political commentator Clancy DuBos.

December 14 - NOGS Holiday Party

Cannon's Restaurant, 4141 St. Charles Ave. Save the date! More details to come.

25 months and 30 days ago this well hit TD
**TOMORROW MORNING YOU WILL
KNOW WHAT THEY KNOW.**



GOM New Release Data

Beginning August 1st, A2D Technologies will be the sole provider of Gulf of Mexico New Release digital LAS well log data resulting from its contract with the Minerals Management Service. Every well drilled in the Gulf of Mexico will be available immediately online the day it is released.

For more information, visit www.a2d.com/newrelease/



Your Well Log Data Marketplace

www.a2d.com

NOGS Office

Office Manager: Annette Hudson

Office Hours: 8:30am – 3:30pm on Monday-Wednesday-Friday

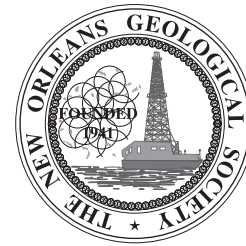
Tel: 504-561-8980 • Fax: 504-561-8988

E-mail: info@nogs.org • Website: www.nogs.org

The office is located at Suite 300, 810 Union Street, New Orleans, LA 70112.

Correspondence and all luncheon reservations should be sent to the above address.

Sent to press on October

**BOARD OF DIRECTORS**

		Company	Phone	E-mail
President	Arthur H. Johnson	Hydrate Energy Int'l	504-464-6208	artjohnson51@hotmail.com
Vice President	Robert Rooney	CLK Energy	504-529-6100	rrooney@clkenergy.com
Secretary	Carol B. Rooney	Consultant Geologist	504-835-1909	carolbrooney@aol.com
Treasurer	J. David Cope	Taylor Energy Co LLC	504-589-0419	dcope@tayloenergy.com
President-Elect	William M. Whiting	Consultant	504-947-8495	bootscon@aol.com
Editor	Timothy J. Piwowar	Shell	504-728-4066	Tim.Piwowar@shell.com
Director 2008	Alfred H. Baker, Jr.	Beacon Exploration, LLC	504-836-2710	abaker1006@aol.com
Director 2009	Willis E. Conatser		504-469-2496	weconatser@aol.com
Director 2010	Michael M. Ledet		504-394-9636	mikeledet@cox.net

COMMITTEE

	Chairperson			
AAPG Delegates	Thomas C. Bergeon	Century Exploration	504-832-3772	tom.bergeon@centuryx.com
AAPG Delegates	Dave Balcer	Chevron	504-592-6725	dbalcer@Chevron.com
AAPG Student Chapter	Bryan Rogers	UNO	504-736-2772	thgem@gmail.com
Advertising-Log	Jennifer Connolly	Shell	504-728-6411	jennifer.connolly@shell.com
Auditing	Reino Clark	MMS	504-736-2711	reino.clark@mms.gov
Awards	Michael N. Fein	W & T Offshore	504-210-8148	mikef@wt offshore.net
Ballot	J. David Cope	Taylor Energy Co LLC	504-589-0419	dcope@tayloenergy.com
Best Paper	David E. Reiter	Dominion E & P Inc.	985-893-8072	david_e_reiter@dom.com
Continuing Education	Jeanne F. Phelps	Phelps Geoscience Serv.	504-931-5651	jsfphelps@yahoo.com
Employment Counseling	Paul J. Post	MMS	504-736-2954	paul.post@mms.gov
Entertainment	William M. Whiting	Consultant	504-947-8495	bootscon@aol.com
Environmental	Daisy Pate	Eustis Geotechnical Eng.	504-613-5798	dpate@eustiseng.com
External Affairs	Michael A. Fogarty	Pennant Exploration	504-891-5400	fogarty@airmail.net
Field Trip	David Garner	Shell	504-728-6154	david.garner@shell.com
Finance and Investment	J. David Cope	Taylor Energy Co LLC	504-589-0419	dcope@tayloenergy.com
Historical	Edward B. Picou, Jr.	Consultant	504-529-5155	epicou@bellsouth.net
Membership/Directory	Penne Rappold	Shell	504-728-4338	prappold@gmail.com
New Geoscientists (NGNO)	TBA			
Nominating	William M. Whiting	Consultant	504-947-8495	bootscon@aol.com
Non-Technical Education	Duncan Goldthwaite	Consultant	504-887-4377	dglthwt@aol.com
Office Operations	Michael N. Fein	W & T Offshore	504-831-4171	lfeinmn1@cox.net
Publications Sales	Edward B. Picou, Jr.	Consultant	504-529-5155	epicou@bellsouth.net
Photography	George H. Rhoads	Chevron	504-592-6873	grhoads@Chevron.com
School Outreach	Thomas C. Bergeon	Century Exploration	504-832-3772	tom.bergeon@centuryx.com
Scouting	David Gillis	Schlumberger	504-592-5360	gillis1@new-orleans.oilfield.slb.com
Sponsorship-Houston	David G. Cole	Consultant	832-689-0411	D.G.Cole@sbcglobal.net
Sponsorship-New Orleans	Leslie Broussard	Diversified Well Logging	504-352-4612	sales@dwl-usa.com
Technical Projects	TBA			
Ad Hoc Committee on University Support	Michael J. Gallagher	Dominion	504-593-7480	Michael_J_Gallagher@dom.com

NOGS LOG STAFF

Editor	Timothy J. Piwowar	Shell	504-728-4066	Tim.Piwowar@shell.com
Editor-Elect	Michael D. Miner	UNO	504-280-3866	mminer@uno.edu
Auxiliary	Arleen Falchook	NOGA	504-885-3108	falchook@aol.com
Calendar	Ryan M. Ott	Chevron	504-592-6803	ottrm@Chevron.com
Info Tidbits	Michael D. Miner	UNO	504-280-3866	mminer@uno.edu
Drill Bits	Paul J. Post	MMS	504-736-2954	paul.post@mms.gov
Webmaster	Jannette Sturm-Mexic			webmaster@nogs.org

NOGS AUXILIARY

Officers		Phone	Directors	Year	Phone
President	Susie Baker	504-466-4483	Peggy Campbell	2007	504-283-2505
1st Vice-President	Linda Peirce	504-393-7365	Ann Gilbert	2007	504-889-2104
2nd Vice-President	Jean Jones	540-738-8091	Dolores Murphy	2007	504-393-0878
Secretary	Judy Lemarie'	504-393-8659	Carol Andrews	2008	504-887-3432
Treasurer	Peggy Rogers	504-392-6323	Alma Dunlap	2008	504-737-2678
Parliamentarian	June Perret	504-881-9357	Earleen Rodan	2008	504-887-4370
Member-at-Large	Beverly Kastler	504-286-0879			

--- NOGS Contact List continued on page 10 ---

see **clearly**

At IHS, we believe “data quality” includes delivering it, just the way you want it.

Data on demand—Transactional or subscription, online or on your network—whatever your needs, you can access our data when, where and how you need it.

Specialty applications — Link & sync our well, production and log data with your interpretation and other software via IHS Enerdeq™ or, load 27 U.S. spatial layers into ESRI tools for geo-spatial mapping.

One-button exports — To the application of your choice, after you've honed your area-of-interest with Enerdeq's browse, map & query tools.

Whether you're powered by your laptop or your corporate E&P portal, if you're plugged in, you can access the industry's best data. With Enerdeq, our flexible data integration platform, we can tailor data access & delivery to your exact needs, from activity alerts to spatial data mining. You choose the place—office, coffee house or boardroom.

See for yourself. Visit ihs.com/energy/bestdata for a demo of Enerdeq, or to browse and order well, production and log data for your area of interest.

See further. See opportunity. See clearly.





from the President

I saw quite a few NOGS members at the 11th Annual Deepwater Technical Symposium at the Hilton in August. For those who couldn't make it, you missed a great conference. We owe a special thanks to Tom Hudson and his team for putting it together with a \$200 registration fee making it a real bargain. My favorite talk was in the session on well completions. Bill Franks of Shell presented the problems encountered during a completion at Ursa, where everything that could go wrong did go wrong. Most case studies I have heard at various conferences in the past showed only good results. Bill's talk was a great reality check, showing us how a top-notch team handles unexpected problems.

Speaking of bargains, registration for our continuing education seminar on October 1 is only \$70. The seminar is on the role of stratigraphy in Gulf of Mexico exploration, with examples and perspectives presented by leaders in the subject. Special thanks goes to Jeanne Phelps and Dick Fillon for their hard work in putting the seminar together. Jeanne has done a lot for NOGS, most recently serving as both Secretary and chair of the Continuing Education Committee. Unfortunately, Jeanne and David have moved to Houston. We really miss them both and wish them well.

With the loss of some very active volunteers and committee chairs this year, there are many opportunities for NOGS members to get more involved in our work. Most of our committees need more help, and several need chairs or co-chairs. Please contact me or one of the board members if you want to help out.

One of our goals for the NOGS LOG is to include more technical information, and we would like to publish short technical articles on a regular basis. Contact Tim Piwowar if you have something for the LOG.

Our school outreach program is ramping up and I hope that many of our members will take part. In addition to the great fossil collection that is available (courtesy of Tom Bergeon), we now have the "Tapestry of Time and

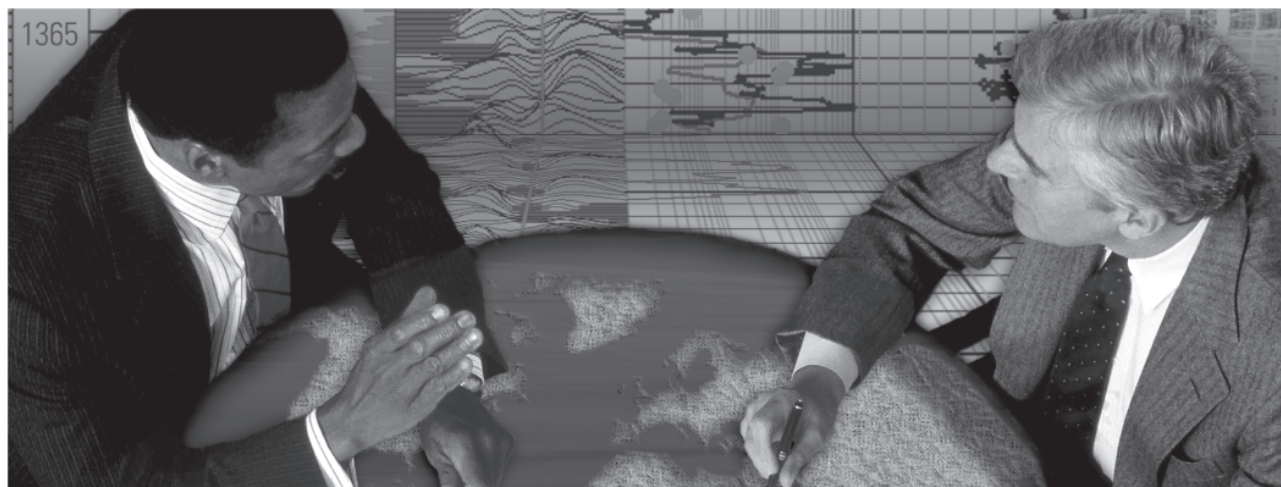
Terrain" map and pamphlet for distribution to schools. David Cope is providing rock samples to hand out to students. With earth science essentially neglected in Louisiana schools, it is up to us to stir the interest in geology for the next generation. Contact Tom Bergeon to get the materials you need. This year we will be keeping track of which schools have been visited by our members and will keep you posted on our progress.

In a similar vein, NOGS is a co-sponsor of BLaST (Building Louisiana Science and Technology) and needs your help. Every year BLaST has a competition for middle school teams that involves programming robots and creating presentations on the topic of the year. This year the topic is "Energy" and we have joined with the other oil industry societies in New Orleans to provide mentoring and financial support. The competition will be on December 1, and many schools need the guidance that our members can provide. If you can help with this, give me a call. I have been a BLaST mentor for several years (this year at Haynes Academy in Metairie) and have found it to be a very rewarding experience. Mike Fein has been a champion of this program and we all owe him our thanks for recognizing and pursuing this opportunity.

Another Past President who has pursued a great opportunity is Jim Seglund (1980-81). Jim now lives in Diamondhead, Mississippi. We have all seen the incredible efforts and results of the volunteers who have come to the Gulf Coast from around the country to help us rebuild after Katrina, and we all know that we must never forget what they have done for us. Jim has taken the lead in creating a monument to honor the Katrina volunteers. The Katrina Volunteers Memorial will be built next to the welcome center on I-10 at the LA-MS state line. After hearing about this project, I signed on to help, but more help is needed. If you would like to assist, please let me know.

Art Johnson

Schlumberger formation evaluation solutions deliver the answers you need. Our extensive portfolio of services, leading-edge technology, and advanced conveyance options keep you in communication with your well throughout its life cycle.



With formation evaluation technologies from Schlumberger, you can make the best decisions for optimized performance in every well.

The formation evaluation one-stop shop

Whether you are logging in open hole or behind the casing, our broad selection of services ensures the best solution for acquiring formation evaluation data. Tools can be conveyed while drilling or on wireline or pipe. We offer many specialized evaluation capabilities, from density, neutron porosity, and resistivity to borehole imaging, nuclear magnetic resonance logging, borehole seismic, formation pressure testing, and fluid sampling. Advanced triple-combo logging options include the VISION* formation evaluation and imaging-while-drilling services. Coupled with Pulse* telemetry and surveying services, the VISION family provides real-time formation evaluation data and enables optimum well placement.

High-speed wireline measurements are recorded with the Platform Express* logging services. The SlimXtreme* platform is designed for high-pressure, high-temperature environments and the ABC* Analysis Behind Casing services are used after casing is set.

Expert interpretation from the engineers and geoscientists of Schlumberger Data & Consulting Services brings all your data together to give you the answers you need. This expertise is available after logging is complete or as real-time two-way wellsite communication through the InterACT* real-time monitoring and data delivery system.

Schlumberger delivers leading-edge technology and interpretation expertise for all your formation evaluation needs, so every well benefits from the very best information.

For more information visit
www.slb.com/oilfield/formation_evaluation/

*Mark of Schlumberger

04-FE-114

Schlumberger

October 8 Luncheon Presentation

Greater Auger Area Case Study: The Relationship Between Pore Pressure, Seismic Stratigraphy and Biostratigraphy

presented by

Tom Kratochvil, Senior Staff Geophysicist, and
Jeff Scheibal, Senior Staff Petrophysical Engineer,
Shell Exploration & Production Company, Inc.

ABSTRACT

In the Garden Banks area of the Gulf of Mexico, Shell produces from the Auger TLP and a ring of subsea fields surrounding it. The intimate linkage of the production characteristics between these fields rests on common depositional characteristics defined by seismic sequence analysis. Paleontological boundaries, namely the Pleistocene/Pliocene interface, and the Pliocene/Miocene interface, represent large-scale divisions in both the production characteristics and sequence stratigraphy. Lesser paleo boundaries map into small-scale delineations of production and stratigraphic characteristics.

These boundaries also relate directly to the pore pressure of the depositional column. Depositional sequences define pressure cells within the column that have a unique pore pressure signature vertically and interconnected plumbing laterally within the basin area. The strong relationship between compressional velocity and pore pressure allow the use of seismic velocity to directly express large-scale depositional sequences, which can be tied to conventional seismic stratigraphic interpretation.

--- continued on page 16 ---

BIOGRAPHIES

Jeff Scheibal is a Senior Staff Petrophysical Engineer for Shell E&P Co. Jeff joined Shell in 1984 after obtaining a B.S. and M.S. in Geological Engineering from the University of Missouri - Rolla. Since joining Shell, Jeff has held a variety of assignments in New Orleans, working on development, exploration and business projects. Technically, Jeff has experience in Deepwater Clastics, Deltaics, Tight Gas, High Temperature/Sour Gas, and Subsalt field exploration and development and has designed and executed evaluations for over 75 GOM wells. Jeff currently leads Shell's Depleted Fields Redevelopment Task Force, coordinating division activities and R&D projects spanning drilling through geophysics.

Tom Kratochvil is a Senior Staff Geophysicist for Shell E&P Co. Tom joined Shell in 1981 after obtaining a B.S. and M.S. in Physics from the University of Illinois - Urbana, and has since obtained and M.S. in Geology from the University of New Orleans and a J.D. from Loyola University New Orleans. Since joining Shell, Tom has held a variety of assignments in New Orleans both in exploration and development seismic interpretation, enabled by a strong seismic acquisition and processing background. Tom has extensive experience in late field life redevelopment projects incorporating 4D seismic and other reservoir monitoring tools. Tom currently is working on new developments in the Green Canyon and Mississippi Canyon areas of the Gulf of Mexico.

THE LUNCHEON RESERVATION DEADLINE IS OCTOBER 3, SO CALL THE NOGS OFFICE - TODAY!

“And Looking Ahead...”

The NOGS/SGS Joint Society Meeting will replace the November NOGS luncheon, and will be held on Thursday, November 8th, 11:00 am at Le Pavilion. Jerry Kapoor, of WesternGeco, will present “Subsalt Imaging - RAZ/WAZ Experience.” Contact the NOGS Office to make your reservation.



Vice-President Robert Rooney (right) greets September speaker Dr. Ernest A. Mancini.

Precise Data.

"Click"

Unlock the Potential of Your Reservoir.

Today's reservoirs are more challenging than ever. To unlock their potential requires absolutely precise data. OMNI Laboratories has established higher standards, more thorough protocols, and meticulous quality control measures to ensure unsurpassed accuracy. Plus, we have assembled the finest scientists in the field to provide superior interpretation and analysis. When precise data is paramount, choose OMNI Laboratories.

At OMNI, We've Got the Answers.

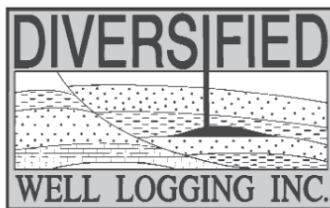


13 LOCATIONS IN THE U.S., CANADA AND SOUTH AMERICA • HEADQUARTERS: HOUSTON, TX • 832-237-4000 • WWW.OMNILABS.COM



Relax. We'll keep you posted.

Your rig is offshore and you are not. How do you know what's going on so many miles away? You know because we tell you. Daily or even hourly, Diversified Well Logging's engineers update you on the status of your rig. We are your eyes and ears, especially when it comes to deep water or high pressure, high temperature areas. Diversified offers 24-hour surface evaluation. We provide secure and customized real-time data communication, in-house research and development and 24/7 on-call support for our equipment and our engineers. Whether you have a 10-day job or 110-day job, we provide the specialized attention you require. So, relax. We're with you every step of the way.



Serving the Gulf Coast for over 40 years.

New Orleans • Lafayette • Houston • Dallas • Corpus

800.280.2096

711 West 10th Street • Reserve, LA 70084 • Phone: 985.536.4143 • Fax: 985.536.2427
sales@dwl-usa.com



PALEO DATA

▼ *Integrated foraminifera and nannofossil
biostratigraphic services*

▼ *Regional paleo databases*

Arthur S. Waterman ▼ *Regional biofacies and isopach maps*
Norman S. Vallette

Michael W. Center

Albert F. Porter, Jr.

Thomas M. Reilly

Richard A. George

Ryan D. Weber

Ann Hare

Donna Lacoste

Rhonda Roederer

▼ *Comprehensive Gulf Basin
Deposystem data/map project*

▼ *Well-site services*

6619 Fleur de Lis Drive
New Orleans, LA 70124
(504) 488-3711

www.paleodata.com

MCMORAN EXPLORATION CO.



McMoRAN OIL & GAS

www.mcmoran.com
NYSE: MMR

1615 Poydras
New Orleans, LA 70112
(504) 582-4000
Fax: (504) 582-4155

P.O. Box 60004
New Orleans, LA 70160

NOGS CONTACT LIST

--- continued from page 3 ---

MEMORIAL FOUNDATION

BOARD OF TRUSTEES

		Company	Phone	E-mail
2007-08 Chairman	Michael N. Fein	W & T Offshore	504-210-8148	mikef@wt offshore.com
2007-08 Secretary	Arthur H. Johnson	Hydrate Energy Int'l	504-464-6208	artjohnson51@hotmail.com
2007-08 Trustee	Doug Cristina	Consultant	985 630-5621	dcristina@charter.net
2007-08 Trustee	George T. Froming	Consultant	504-799-1918	gfroming@eplweb.com
2008-09 Trustee	David E. Balcer	Chevron	504-592-6752	dbalcer@chevrontexaco.com
2008-09 Trustee	Tom Klekamp	Amber Resources LLC	985-845-4046	klekamp@bellsouth.net
2009-10 Trustee	Michael C. Fauquier	W & T Offshore	504-831-4173	fauquier@bellsouth.net
2009-10 Trustee	Scott A. Wainwright	Bret Exploration Co Inc	504-889-2700	scott_wainwright@hotmail.com

AAPG DELEGATES

Term Ends

		Company	Phone	E-mail
2007	Thomas C. Bergeon	Century Exploration	504-832-3772	tom.bergeon@centuryx.com
2007(a)	J. Stephen Tissue	Chevron	504-592-6030	stevetissue@Chevron.com
2008	Irion Bordelon, Jr.	Cimarex Energy	504-586-3023	lbordelon@cimarex.com
2008	Carol Rooney	Consultant Geologist	504-835-1909	
2008(a)	James Cearley III	Chevron	832-854-2655	james.cearley@chevron.com
2008(a)	Arthur T. Cerniglia	CIG Exploration	504-780-0097	cigexploration@yahoo.com
2009	David E. Balcer	Chevron	504-592-6725	dbalcer@Chevron.com
2009	William Whiting	Consultant	504-947-8495	bootscon@aol.com
2009(a)	Nancye Dawers	Tulane University	504-862-3200	ndawers@tulane.edu
2009(a)	David Cooke	MMS	504-736-2609	david.cooke@mms.gov

Blast From NOGS Past

25 Years Ago (Oct. 1982): Even with photos much harder to get into print at the time, a montage of 22 photos accompanied a brief report out on the "NOGS Summertime Barbecue" held at the City Park Shelter on June 21, 1982. "Only" 130 of the 200 who purchased tickets turned out due to poor weather.

35 Years Ago (Oct. 1972): Then upcoming October speaker, Dr. Robert S. Dietz opened his abstract, entitled "Continents Adrift: New Orthodoxy or Persuasive Joker", with the following: "Drifters are alive and well despite snide remarks from critics that 'drift is an explanation which explains nothing that we wish to explain.'"

45 Years Ago (Oct. 1962): The headline "LSU Alumni to Meet at Playboy Club" announced a meeting of LSU Geology Alumni "which is always held in conjunction with the GCAGS convention." Tickets were available for \$3.75 per person.

- *Tim Piwowar*



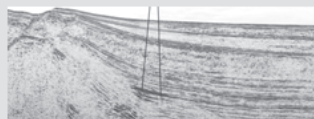
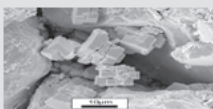
Complex Reservoir Evaluation?

Log Calibration SATURATION MODELING
Reservoir Performance FRACTURE DESIGN PVT Analysis
Completion Design Flow Assurance Sand Control
Reserve Estimates Borehole Stability

Simple Solution: Rely on Experience!

Rely on Core Laboratories!

- Comprehensive core analysis laboratory and wellsite services
- Comprehensive reservoir fluid laboratory and sampling services



New Orleans: 504-766-6583

Lafayette: 337-837-8616

2006-2007 NOGS Memorial Foundation Scholarships

GRADUATE

Lee H. Meltzer Memorial

\$3,000 Cash Award

LSU - Rhonika Robinson

Prior to leaving her native Trinidad and Tobago at the age of 25, Rhonika Robinson worked as an accounts clerk at an insurance company and an advertising company. After a few short courses in Information Technology, she decided to pursue a career in Computer Science. Rhonika took the SATs with the hope of earning a scholarship at a North American university. Dillard University in New Orleans presented her with a full scholarship and thus began a new life with new opportunities. Traveling and having the chance to become immersed in other cultures had always been one of Rhonika's goals, and attending Dillard gave her the opportunity to travel to various places in and out of North America as well as earn her Bachelor's degree. Rhonika has once again started a new path as she pursues a Master's in Geology at Louisiana State University and is once again taking full advantage of the numerous opportunities offered there.



Rhonika Robinson with
Memorial Fund chairman Mike Fein

James A. Gilreath Memorial

\$3,000 Cash Award

TULANE - Ping Hu

A Master's student in the Department of Earth and Environmental Science at Tulane University, Ping Hu joined in the Quaternary Research Group lead by Professor Torbjörn Törnqvist last fall after earning a Bachelor's degree in Earth Science from Nanjing University, China. During the academic year, she acquired more systematic and updated knowledge about the Earth and research techniques by taking classes and attending seminars. Ping has also been preparing for a project focusing on the sea-level change along the northwestern Florida Gulf Coast, reading scientific articles, joining group meetings, and discussing the background knowledge with her advisor and other students. She obtained valuable experience from fieldwork in the Apalachicola Delta, Fla. and the eastern Mississippi Delta, La. Sea-level research represents a significant change for Ping since her undergraduate studies and senior thesis project focused on geochemistry, mineralogy and petrology. With her new knowledge and increasing interest in sea-level change, Ping expects to complete the transition successfully and is especially encouraged by recognizing the importance of her future research to people living along coastal areas.



Ping Hu was presented the James Allen Gilreath
Graduate Scholarship by Scott Gilreath

2006-2007 NOGS Memorial Foundation Scholarships

GRADUATE

NOGS Memorial Foundation

\$3,000 Cash Award

UNO - Asani Brewton

Asani Brewton is a graduate student at the University of New Orleans with a 4.0 GPA. She received a Bachelor's degree in Geology from Elizabeth City State University in December 2005 where she graduated with honors. Her undergraduate senior thesis was "The Late Devonian (Frasnian-Famennian) Extinction Event as Evidenced by Deep Marine Fossils of the Appalachian Mountain Area." and her graduate thesis topic will be on oceanic anoxic events as seen in the Gulf of Mexico. Asani has presented at several geology conferences including the National Association for Black Geologists and Geophysicists in Raleigh, NC in 2005 and the Geological Society of America's Southeastern Section 55th Annual Meeting in Tennessee in 2006. She is a co-author for part of the 2005 AAPG field trip guidebook. In 2003, Asani first interned with the United States Forest Service in Wise, VA, mapping out flagstone and abandoned mines and later participated in her first internship with the Minerals Management Service in New Orleans where she fell in love with the city. She started a second internship with the Minerals Management Service in May 2006 and has been working part-time as an intern for them ever since.



Asani Brewton with
Memorial Fund chairman Mike Fein

NOGS Memorial Foundation Scholarships

The NOGS Memorial Foundation Scholarships are granted each year to those students who have demonstrated exceptional talent in or commitment to their geologic studies and projects. It is the policy of the Memorial Foundation to posthumously name these scholarships after those members whose own extensive contributions to the profession have been particularly praiseworthy.

***Lee Hilliard Meltzer** for expertise in oil and gas appraisal and exploration, as well as manifold and unstinting support of and service to - from AAPG to NOGS - the region's professional geologic organizations.*

***James Allen (Al) Gilreath** for his work as chief tool developer of down-hole instrumentation and 'pattern' interpretation, earning him - world-wide - the title, 'Mr. Dipmeter'.*

***Jules Braunstein** gained wide recognition in the oil and gas industry not only for exceptional technical expertise but also as an exacting editor. His long career was conspicuous for selfless devotion - and as carried on by his surviving wife, **Olga**, in her bequeathal of the residue of their estate to NOGS Memorial Foundation Scholarship Fund.*

2006-2007 NOGS Memorial Foundation Scholarships

SENIOR

Jules & Olga Braunstein Memorial

\$2,500 Cash Award

LSU - Amy Lasseigne

Amy Lasseigne, 21, is a native of Louisiana and daughter of Jack and Jill Lasseigne. In 2004 she graduated as a National Merit Finalist and Valedictorian from St. Joseph's Academy in Baton Rouge and enrolled in the Honors College at Louisiana State University. In the fall of 2005, she began performing research in contaminant transport with Dr. William Blanford, funded through LSU's Chancellor's Future Leaders in Research and a Howard Hughes Medical Institute undergraduate research grant. Amy presented a poster on that work at AGU in December 2006. In the summer of 2007, she completed senior field camp and an internship with Amerada-Hess in Houston. Currently she is a senior BS student in Geology at Louisiana State University with an overall 4.0 GPA. Amy intends to continue research and complete a Senior Thesis before graduating in May 2008.

TULANE - Emily Chin

Originally from Long Island, New York, Emily Joyce Chin has been interested in geology ever since eighth grade earth science class, and found herself fascinated by the glacial history of Long Island. She is currently a junior at Tulane University and hopes to attend graduate school to pursue higher degrees in geoscience after completing her studies at Tulane. Emily would like to study inner earth processes. In her spare time, she enjoys glassblowing, playing darts and the outdoors.



Emily Chin with
Memorial Fund chairman Mike Fein

NOGS 2007 Scholarship Recipients

Memorial Fund chairman Mike Fein announced and presented the winners of the 2007 NOGS scholarships at the September luncheon at Le Pavillon.

2006-2007 NOGS Memorial Foundation Scholarships

SENIOR

Jules & Olga Braunstein Memorial

\$2,500 Cash Award

UNO - Edmi Padron

Born in Havana, Cuba, Edmi Padron came to Louisiana in 1995 and is a senior in the Department of Earth and Environmental Sciences at the University of New Orleans. Before he graduated from Warren Easton Senior High School in New Orleans, he enrolled in the UNO Summer Minority Program. Edmi traveled around the western U.S. and was quickly captured by the beauty of studying the earth and its processes. Realizing that he wanted to pursue a career in geology, he declared geology as his college major after the field trip. Edmi has interned with Freeport McMoRan and ExxonMobil and intends to pursue a Master's degree in geology after graduating from UNO. In his spare time, Edmi enjoys listening to music and traveling to new places.



Edmi Padron with
Memorial Fund chairman Mike Fein

UNO - Randy Justin

Randy Justin is a senior in the Department of Earth and Environmental Sciences with an overall GPA of 3.3. His initial exposure to geology came while attending McDonogh 35 Senior High School where he attended the Summer Minority Awareness Program at UNO for two consecutive summers. He enjoys studying geology mostly because of the necessity to think creatively and critically to solve problems concerning the world today and the future. Randy's love of geology has afforded him the opportunity to visit many places in the U.S., and has also led him to participate in several summer research programs including SROP at Pennsylvania State University ('06 & '07). He is currently a member of the UNO Society of Earth and Environmental Sciences (SEES) and the Louisiana Alliance for Minority Participation in the sciences (LAMP). Randy's future goals include obtaining a Master's degree in Geophysics and pursuing a career in oil exploration. In his spare time, Randy enjoys exercising, reading, volunteering, composing music, and meeting new people.



Randy Justin with
Memorial Fund chairman Mike Fein

2006-2007 NOGS Memorial Foundation Scholarships

JUNIOR

Jules & Olga Braunstein Memorial

\$2,000 Cash Award

LSU - Jessica Mumphrey

As a lifetime resident of south Louisiana, the only geology that Jessica Mumphrey was ever exposed to was fluvial environments. Born, raised, and schooled in Baton Rouge, she first saw Geology in all its glory this past Christmas in the form of a mountain. Though it might be hard to see where the idea of becoming a scientist came from, the importance of education was instilled into Jessica throughout her life. She was sent to a Catholic middle school and then to a prestigious Catholic high school where she learned faith and science side by side. Science pulled her in at high school, which overjoyed Jessica's father because he always dreamed that one of his children would become a scientist. Jessica was pursuing a career in meteorology before a fortunate series of events led her to geology, a field she feels perfectly suited for. Since entering the Geology program at LSU, the support from the department and professors has been overwhelming. Jessica cherishes everything she learns about geology and takes advantage of any event that can make her a better geoscientist. Every event in her geology career has been a positive one, giving Jessica confidence that this is where she belongs.



Jessica Mumphrey with
Memorial Fund chairman Mike Fein

TULANE - Johanna Nevitt

Johanna Nevitt grew up in Santa Cruz, Ca. and developed an interest in geology during family and school camping trips in areas such as Mammoth, Yosemite, the Green River in Utah, and the Grand Canyon. Johanna graduated from Aptos High School in 2005 and attended UC Davis for a quarter when Tulane closed its doors following Hurricane Katrina. Johanna is a junior at Tulane University and will be studying abroad at the University of Sydney this fall.

October Luncheon Abstract, continued from page 7

Large-scale depositional sequences define, and in turn are defined by, different phases of salt and fault movement as seen on conventional seismic. The productivity of reservoirs within a depositional package depends on its geometry relative to these salt and fault features.

This presentation will illustrate these pressure/production/stratigraphic/paleo cells throughout the greater Auger basin area from the present day seafloor to the Upper Miocene section. These illustrations will consist of: isopach maps of the major pressure cells compared with depositional basin geometry, relative sediment influx and salt movement; vertical seismic displays annotated with stratigraphic cells bounded by biostratigraphic markers (sequence boundaries) as compared with the seismic velocity model, and basin production characteristics of the cells; and graphical displays of the interaction between the minor pressure cells (individual reservoir bodies) vertically and laterally over production life as evidenced by downhole pressure measurements and 4D seismic amplitude changes.

THE GOLD PARTY

October 19, 2007

OLD U.S. MINT
LOUISIANA STATE MUSEUM

400 Esplanade Avenue, New Orleans, LA 70116
Located in the historic French Quarter.

Spend a dazzling evening celebrating the reopening
of the Old U.S. Mint and the *Gold* exhibition on view
October 20, 2007 – January 2, 2008



Savor cuisine and drinks from New Orleans' finest restaurants with entertainment by the Lil' Band O' Gold, the Gold Dancers, and acrobats. Black tie is optional, or come dressed in gold, and win a prize for elegance, creativity or historical inspiration. Ticket Prices begin at \$250 for the Patron Party and \$50 for the Main Party.

Patron Party 6:30 – 8:00 pm
Main Party 8:00 pm – Midnight

For more information call the
Louisiana Museum Foundation
at 504.558.0493.

**When Mother Nature doesn't
back down.**



**We have experts
up to her challenge.**

While Mother Nature is a powerful force to reckon with as evidenced by Hurricanes Katrina and Rita, responding to extraordinary challenges is a way of life at Shell. And Charlie Williams, Chief Scientist and Engineer, is definitely up to the task. Under his lead, a record-setting 1000-ton rig lift and 2700 feet deep pipeline repairs for one of Shell's key oil production platforms in the Gulf of Mexico were safely completed ahead of schedule bringing much-needed supply back into production. Learn more about how Shell uses technology to secure energy by visiting shell.com/us/sepcos



Chevron



**935 Gravier Street
New Orleans, LA 70112**

(504) 592-6000

"Serving the Oil & Gas Industry Since 1983"

Geological,
Geophysical &
Land Drafting

Anthony Catalanotto

President

Stefani Kelone

Drafting and Design



Geo-Draft, Inc.

A Professional Drafting & Graphics Firm

3349 Ridgelake Drive • Suite 202 • Metairie, LA • 70002

Office: (504) 836-2882 Fax: (504) 836-2877

geodraft@bellsouth.net

CLK ENERGY, LLC

Oil & Gas Exploration and Production

**1615 Poydras Street
Suite 1300
New Orleans, LA 70112**

**(504) 529-6100
(504) 596-2021 [Fax]
www.clkenergy.com**

el paso | Production

1001 Louisiana
Room S W 2205 A
Houston, Texas 77002
Office: (713) 420-2600
Fax: (713) 420-1643

EXPLORE A WORLD OF OPPORTUNITIES WITH TGS

- Non-Exclusive Seismic Surveys
- Seismic Data Acquisition
- Seismic Data Processing via TGS Imaging
- Integrated Regional Interpretations
- Well Log Data via A2D Subsidiary
- Gravity / Magnetic Data & Services



Seismic



Well Log



Integrated Products



TGS Imaging

www.world-class-data.com

TGS-NOPEC Geophysical Company • www.tgsnopec.com • NORWAY +47 31 29 20 00 • USA +1 713 860 2100 • UK +44 (0) 1234 272122 • AUSTRALIA +61 8 9480 0000

South Louisiana and Offshore

Exploration and Production Activity

DRILL BITS

- **McMoRan Exploration Co.** on August 2 reported continued success at Flatrock where the well had been drilled to 18,100' and encountered three additional hydrocarbon bearing zones in the Operc section. Wireline logs indicated 30' net of hydrocarbons in one sand, and LWD tools indicated 41' net of hydrocarbons in two other sands. These three zones are deeper than the five zones announced in July 2007, which contained 189' net of hydrocarbon bearing sands over a combined 364' gross interval above 16,500' in the Rob-L section as indicated by wireline logs.

In total, the well had encountered eight zones with a total of 260' net of hydrocarbon-bearing sands over a combined 637' gross interval. The well will be drilled to 19,000' to evaluate deeper targets in the Operc section.

The Flatrock exploratory prospect was spudded in March 2007. It is located on OCS Block 310 at SMI 212 in approximately 10' of water. Following drilling activities, production from the well is expected to commence quickly through existing infrastructure. McMoRan intends to develop the opportunities in this area aggressively and is currently permitting three offset locations to provide further options for the development of the multiple reservoirs found in the Rob-L and Operc sections.

McMoRan's Co-Chairmen, James R. Moffett and Richard C. Adkerson, said: "The drilling results at Flatrock continue to indicate a major discovery. The presence of multiple pay zones in the Rob-L and Operc sections of the middle Miocene in a single well is significant. We believe there are significant additional development and exploration opportunities on this large structure." McMoRan controls a significant amount of acreage in the Tiger Shoal/Mound Point area (OCS Block 310/Louisiana State Lease 340). The addition of the Flatrock discovery follows prior discoveries by McMoRan in this important area, including Hurricane, Hurricane Deep, JB Mountain, and Mound Point. McMoRan has multiple additional exploration opportunities with significant potential on this large acreage position.

McMoRan, the operator, has a 25.0% WI and an 18.8% NRI interest. Plains Exploration & Production Company has a 30% WI.

- The reconfigured Western Gulf of Mexico Oil and Gas Lease Sale 204 was held in New Orleans on August 22 by the U.S. Department of the Interior's Minerals Management Service (MMS). The sale attracted \$289,953,066 in high bids, from 47 participating companies. MMS received 358 bids on 282 tracts. The sum of all bids received totaled \$369,496,840. The sale offered 3,338 tracts comprising approximately 18 million acres offshore Texas.

With the sale area reduced ~20%; high bids on a percentage basis exceeded last year's \$341 million for the Western Gulf Sale 200, which was the best Western Gulf sale in nine years for the number of bids submitted and the best performance in eight years for the amount of money bid.

	Sale 204	Sale 200	% Difference
Tracts	358	381	6
Bids	282	541	48
High Bids (\$ MM)	289	341	15
Participating Companies	47	62	24

MMS Preliminary Sale Statistics showed the following:

The top five companies submitting the highest dollar amount of high bids for Sale 204:

Company	# High Bids Submitted	Sum High Bids Submitted (\$)
Statoil Gulf of Mexico LLC	36	138,889,688
BP Exploration & Production Inc.	91	31,015,727
Petrobras America Inc.	34	29,268,100
Devon Energy Production Company, L.P.	26	20,035,500
ConocoPhillips Company	24	12,341,000

Statoil accounted for seven of the highest single bids and nearly half of the \$289.9 million in total winning bids. With the Statoil-Hydro merger effective in October, if Hydro's position is added to Statoil's, then the soon-to-be combined entity's domination of the sale was even more pronounced.

The top five companies submitting the highest number of high bids for Sale 204:

Company	# High Bids Submitted	Sum High Bids Submitted (\$)
BP Exploration & Production Inc.	91	31,015,727
Statoil Gulf of Mexico LLC	36	138,889,688
Petrobras America Inc.	34	29,268,100
Devon Energy Production Company, L.P.	26	20,035,500
ConocoPhillips Company	24	12,341,000




The top five companies submitting the highest dollar amount of total bids for Sale 204:

Company	# Total Bids Submitted	Sum of Total Bids Submitted (\$)
Statoil Gulf of Mexico LLC	40	143,145,888
BP Exploration & Production Inc.	108	55,141,176
Petrobras America Inc.	40	30,082,600
Shell Offshore Inc.	11	23,319,996
Devon Energy Production Company, L.P.	34	21,887,000
ConocoPhillips Company	24	12,341,000

Statoil won 7 of the 10 highest bid blocks. Their two highest bids, and the sale's two highest bids of \$37.58 MM and \$27.58 MM, were for Alaminos Canyon Blocks 810 and 811 respectively. These blocks are in the Perdido Fold Belt, west and slightly north of the Shell-operated Perdido Project, which will be supported by the first subsea pipelines extending so far into the Western Gulf. Nine of the highest bids in the sale were for blocks in the Alaminos Canyon and Keathley Canyon areas.

- The article *Big Oil Sees GoM as Pricey But Accessible*, "As geopolitical turmoil makes Big Oil's portfolio more risky, the Gulf of Mexico is fast becoming the energy world's savings bonds", appeared in both *Rigzone* and the *Wall Street Journal*. You can access it at: http://www.rigzone.com/news/article.asp?a_id=49470.

- Paul Post

**GCSSEPM FOUNDATION 27TH ANNUAL
BOB F. PERKINS RESEARCH CONFERENCE**

**The Paleogene of the Gulf of
Mexico and Caribbean Basins:**

Process, Events, and Petroleum Systems

**December 2-5, 2007, at the Marriott Westchase,
Houston, TX**

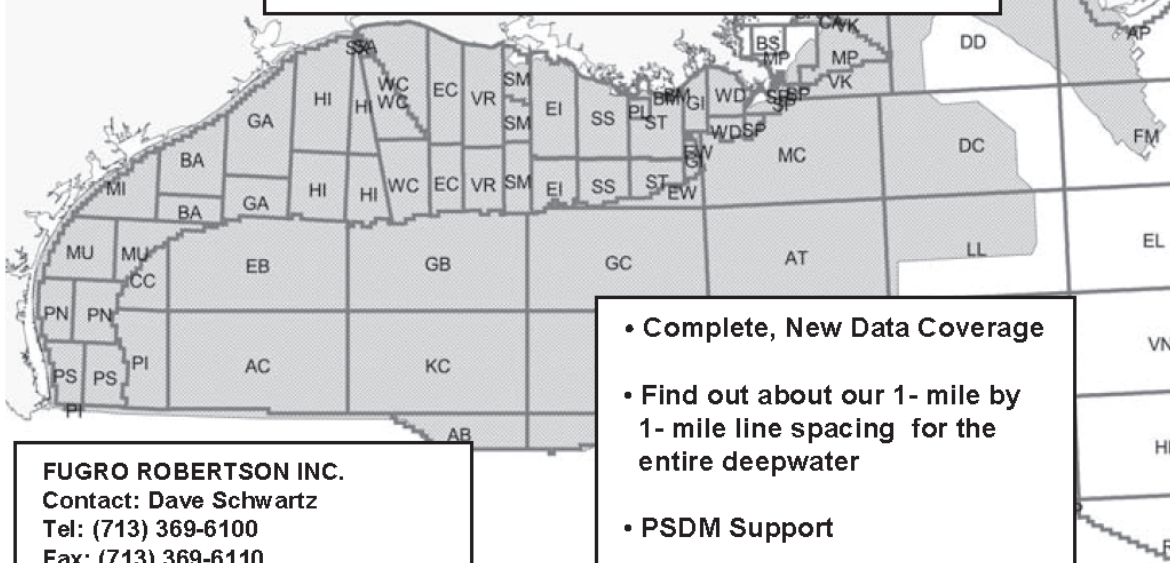
**Information and resgistration are available
at our web site:**

www.gcssepm.org

Robertson



**"The Place to Go"
For GOM Gravity Data and Interpretations**



FUGRO ROBERTSON INC.
Contact: Dave Schwartz
Tel: (713) 369-6100
Fax: (713) 369-6110
Email: infofri@fugro.com
www.fugro-lct.com

- Complete, New Data Coverage
- Find out about our 1- mile by 1- mile line spacing for the entire deepwater
- PSDM Support
- 3D Modeling

SEI®

Seismic Exchange, Inc.

**Strategic Speculative Surveys
Geophysical Data Marketing & Management**

**Your
Full Service
National
Seismic Data
Marketing Firm**

New Orleans
Dallas
Houston
Denver
Oklahoma City
Corpus Christi
Tulsa

201 St. Charles Avenue, Suite 4300, New Orleans, Louisiana 70170-4300
Telephone 504.581.7153 Fax 504.581.9591
www.seismicexchange.com



NOGS Membership News & Information

This is your page. We would like to fill it with your news. In addition to professional news from our members; e.g., promotions, transfers, moves, new employer, etc., we also welcome your success stories. Please e-mail items to log@nogs.org.

NOGS/SGS Joint Society Meeting

Thursday, November 8th, 11:00 am

SUBSALT IMAGING - RAZ/WAZ EXPERIENCE

Presented by: Jerry Kapoor, WesternGeco

New NOGS Members August 2007

Michael A. Celata

Minerals Management Service
Research Studies Section
1201 Elmwood Park Blvd.
New Orleans, LA 70123
504-736-2448

Matthew A. Clark

LSU-Student
1303 South Ridge Dr.
Mandeville, LA 70448
985-624-9291

Matthew J. Padon

Seabird Expl. Americas, Inc.
Sales Manager
Ste 206, 1155 N Dairy Ashford
Houston, TX 77079
281-556-1666

Scott A. Wessels

UNO - Student
2000 Lakeshore Dr GP 1065
New Orleans, LA 70148

REINSTATED

Peter D. Guarisco IV
Minerals Management Service
1201 Elmwood Park Blvd
New Orleans, LA 70123
504-280-6591

REINSTATED

Kevin P. Guilbeau
LLOG Exploration
Exec VP & COO
Ste 200, 103 Northpark Blvd
Covington, LA 70433
985-801-4300

REINSTATED

Allen Lowrie
Independent
238 F Z Goss Rd
Picayune, MS 39466
228-688-5676

REINSTATED

Steve McGovern
Woodside Energy
71683 Riverside Dr
Covington, LA 70433
985-249-5350

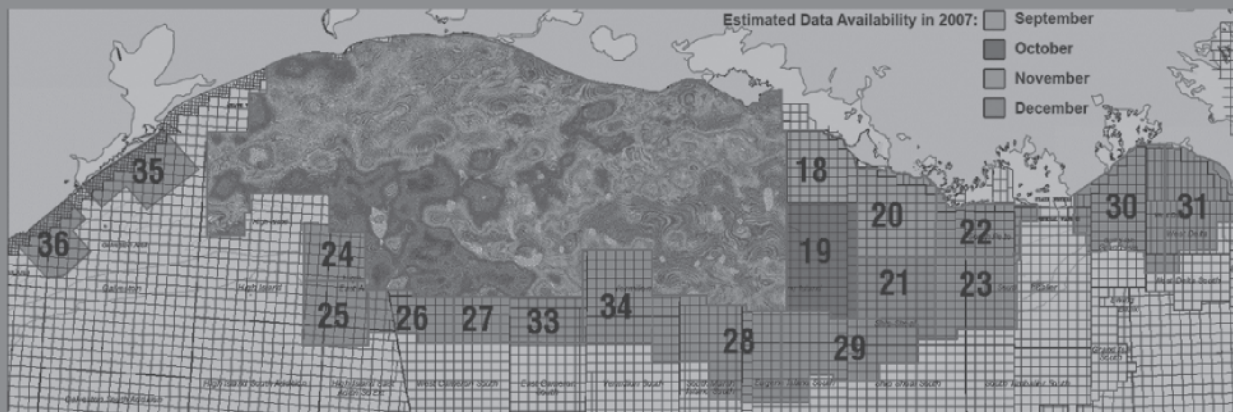
REINSTATED

Rebecca C. Murphey
Minerals Management Service
Geologist
1201 Elmwood Park Blvd
New Orleans, LA 70123-2394
504-736-2430

REINSTATED

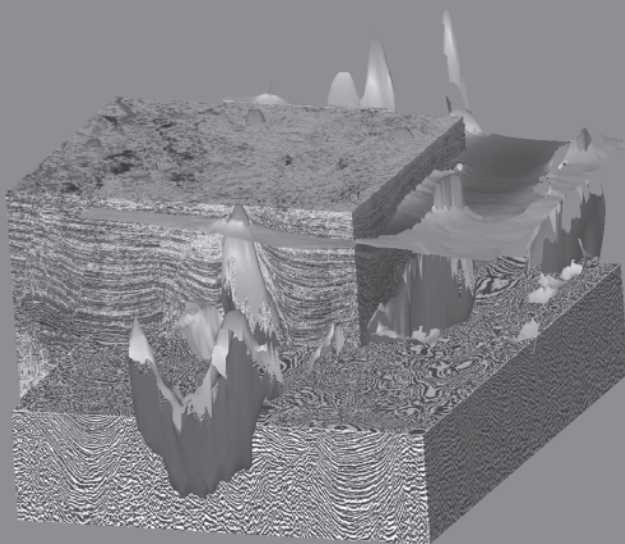
John Vaeth
Schlumberger
Ste 2700, 1515 Poydras St
New Orleans, LA 70112
504-592-5412

More depth



Fairfield continues to expand its Kirchhoff Prestack Depth Migrated GOM data base.

- Offsets of 20,000 and 30,000 feet, imaged to 40,000 and 50,000 feet
- Full fold depth migrated gathers (60 & 90 fold) using AVO preserved processing
- Full offset stacks & corridor stacks available



Less risk

It's just that simple.

The **more** accurate focusing and spatial positioning of depth migration makes better sense of amplitudes and lithology indicators; and, ultimately, a better well location with **less risk** of unwelcome, costly drilling surprises.

Visit www.fairfield.com for Fairfield's multi-client, prestack depth migrated Gulf of Mexico data.



FAIRFIELD
INDUSTRIES

Houston 281/275-7500
New Orleans 504/525-6400

Proud to be
an American
company

Updated Louisiana Oil and Gas Economic Impact Report for 2007: A recent study conducted, by Dr. Loren Scott for the Louisiana Mid-Continent Oil and Gas Association, determined that the Louisiana oil and gas industry had a \$70 billion impact on the state in 2005. The study titled *The Energy Sector: Still a Giant Economic Engine for the Louisiana Economy* also found that out of all 50 states, Louisiana ranks first in crude oil production, second in natural gas production, and second in refining capacity. The study also documents that over 83,000 miles of pipelines transport crude and natural gas within the state and in the offshore region. Petroleum and related industries paid nearly \$4.2 billion in wages for Louisiana households in 2006 and each petroleum industry job supported 4.5 additional jobs in the state. The full report can be viewed at: <http://www.lmoga.com/information/erfull.pdf> and a summary at: <http://www.lmoga.com/information/ers.pdf>.

Alpine Glacial Melt and Eustatic Sea Level Rise: The melting of ice accounts for all recent sea-level rise not attributable to thermal expansion of ocean waters. New findings published in the August 24 issue of *Science* by Meier et. al attribute 60% of this ice melt to alpine glaciers and ice caps (as opposed to the large Greenland and Antarctic ice sheets), a source that has generally been ignored in mass-balance and climate modeling studies. The contribution of the smaller glaciers to sea level rise has accelerated over the past decade due to thinning and retreat of marine terminating glaciers. The results update the Intergovernmental Panel on Climate Change (IPCC) 2007 assessment report, which determined the current rate of eustatic sea-level rise to be 3.1 +/- 0.7 mm/yr. Meier et. al, propose that the acceleration of glacier melt documented in their report may cause an additional 0.1 to 0.25 m of sea-level rise over the next century.

(From: Meier, M. F., et. al, 2007, Glaciers Dominate Eustatic Sea-Level Rise in the 21st Century: *Science*, v. 317, p. 1064-1067.)

East Greenland Rift Basins Province Oil and Gas Potential: As recent headlines highlight the up-and-coming international struggle to claim rights to the Arctic seafloor (bathymetric map and summary: http://en.wikipedia.org/wiki/Lomonosov_Ridge), USGS Fact Sheet 2007-3077 entitled *Assessment of Undiscovered Oil and Gas Resources of the East Greenland Rift Basins Province* was released in August. The assessment was done in association with the Geological Survey of Denmark and Greenland (GEUS). The results of the study (assuming the absence of sea ice) put fully risked estimates at 8,901 million barrels of oil, 86,179 billion cubic feet of gas, and 8,121 million barrels of natural gas liquids for the region which spans approximately 500,000 km². This region was chosen as a prototype for the new USGS Circum-Arctic Resource Appraisal (CARA) because it has much in common with other arctic basins, such as a paucity of data, significant resource potential, and considerable technical barriers to exploration and development.

(From: http://pubs.usgs.gov/fs/2007/3077/pdf/FS07-3077_508.pdf)

- Mike Miner

Membership Dues Reminder

***Dues were
due by
July 1st!***

Strong Solutions. **TODAY and TOMORROW.**

Feel the strength of having one of the most impressive interpretation packages on the market.

Use our flexible suite of products to interpret projects of any size. Be empowered by our state of the art software with the adaptability to operate on machines which contain 64-bit multi-core processors or on basic laptops ready for the road. Our versatile licensing allows for single or network usage. Network users enjoy the flexibility of sharing projects simultaneously and of setting up remote access. Let SMT meet your growing geological, geophysical, and engineering needs with our constant enhancement of current tools and integration of innovative new products to take you smoothly from Seismic through Simulation.

Enjoy the power of a superior product with a staff prepared to keep you on the cutting edge of tools and technology.



Contact SMT for a free evaluation of our products!



Seismic Micro-Technology, Inc.
www.seismicmicro.com

E&P BASED. Software FOCUSED.

North America: +1 713 464 6188 Europe: +44 (0)20 8240 6524 Asia: +65 6220 1089

©2007 ALL RIGHTS RESERVED. SEISMIC MICRO-TECHNOLOGY, INC.

THE NEW ORLEANS GEOLOGICAL SOCIETY MEMORIAL FOUNDATION, INC.

The Memorial Foundation is an IRS Tax Exempt Code #501 (c)(3) organization. The Federal I.D. is: 72-1220999. Please consider making your donation prior to the close of this year's fiscal cycle which is September 30, 2008. Your individual support in any amount will help meet the IRS Guidelines for our Foundation. *Thanks!*

\$15,000 AND ABOVE

Gibbett Hill Foundation

*In Memory of Steve & Marion Millendorf,
William J. Prutzman, Roger G. Vincent & Ron Youngblood*

\$10,000

The Booth-Bricker Fund

In Memory of Richard W. Boebel

\$8,000 TO \$9,000

GCAGS Matching Funds

\$3,000 TO \$4,000

Paul C. Mc Williams

NOGS Golf Tournament May 2007

In Memory of Bill Craig

\$2,000

Bridwell Oil Company

In Memory of Richard W. Boebel

\$1,000

Olga Braunstein Succession

Thornton E. Anderson

In Memory of Richard W. Boebel

\$500

Richard W. Boebel

Joanne J. Clark and Family

In Memory of Richard W. Boebel

Joffe J. Crouere

In Memory of Richard W. Boebel

\$250 TO \$499

Carlo C. Christina

In Memory of Al Gilreath

Seismic Exchange, Inc.

In Memory of Richard W. Boebel

UP TO \$249

John Edward Allen, Jr.

Don and Carol Andrews

In Memory of T. Wayne Campbell

In Memory of Wayne H. Grimes

In Memory of Robert W. Sabate'

Robert J. Ardell

In Memory of Robert W. Sabate'

In Memory of Francis X. Bland

Peggy and Robert Armstrong

In Memory of Richard W. Boebel

Edward C. Austin

In Memory of Charles L. Jones

Bruce Bahlinger

In Memory of Thomas H. Philpott

Al and Susie Baker

In Memory of Robert W. Sabate'

Jack R. Banttari

Abraham Biadgelgne

Maurice N. Birdwell

In Memory of Jim Davis

Cynthia A. Bradford

Eric C. Broadbridge

Hilary James Brook

Jack and Lucretia Bryant

In Memory of Robert W. Sabate'

Elisha A. Buckner

Chevron

Matching Funds

Arthur F. Christensen

Clarence F. Conrad

Willis E. Conatser, PhD

Charley and Trudy Corona

In Memory of Robert W. Sabate'

In Memory of Mary Barrell

Michael A. Danahy

Robert M. Danos

In Memory of Robert W. Sabate'

M. R. "Bob" Douglass

Exxon Mobil Foundation Matching Funds

Michael N. Fein

Brent J. Foster

In Memory of Robert W. Sabate'

Laurens Gaarenstroom

FONO FUND

The FONO Fund accepts contributions that are invested and the income dedicated to assure sufficient financial resources will always be available to maintain the NOGS business office. Contributors are reminded that donations to the FONO Fund are not covered by the IRS 501 (c)(3) tax exempt classification and should be reported as a business expense on your IRS tax report.

\$600

Richard W. Boebel

Willis E. Conatser

\$500

James A. Hartman

In Memory of Robert W. Sabate'

UP TO \$249

Donald I. Andrews

Alfred H. Baker Jr.

Joseph E. Boudreaux

Cynthia A. Bradford

Eric C. Broadbridge

Jack G. Bryant

In Memory of Shelby W. Smith

J. Sybil Calloway

Anthony Carollo Jr.

Arthur F. Christensen

James S. Classen

Richard P. Colomes

Joffe J. Crouere

Merle J. Duplantis

Richard A. Edmund

Parrish N. Erwin, Jr.

Niles R. Faulk

Michael N. Fein

Laurens Gaarenstroom

Peter G. Gray

Bernard L. Hill, Jr.

Thomas A. Hudson

Thomas Charles Klekamp

Richard G. Klibert

William J. Malin

Jeannie F. Mallick

George M. Markey, Jr.

Louis L. McCormick

William J. O'Leary

Richard A. Olsen

William S. Peirce

Edward B. Picou, Jr.

In Memory of Robert W. Sabate'

James P. Raymond, Jr.

Brenda E. Reilly

C. R. Rondeau

Monte C. Shalett

Rudolf B. Siegert

Raymond Stephens

Stephen Szydluk

Scott A. Wainwright

Roy C. Walther

Arthur S. Waterman

Robert C. Weissmann

James W. Yeldell Jr.

Jim Zotkiewicz

CONTRIBUTIONS FOR BOTH FUNDS
THROUGH SEPTEMBER 26, 2007.

DONATIONS ARE LISTED FOR ONE YEAR.

Sherwood M. Gagliano

Peter G. Gray

In Memory of Robert W. Sabate'

Angela M. Hessler

Bernard L. Hill, Jr.

In Memory of Robert E. Osborne

Owen R. Hopkins

John H. Houser

Dan E. Hudson

Thomas A. Hudson

Thomas E. Johnson

Thomas Charles Klekamp

In Memory of Robert W. Sabate'

Richard G. Klibert

John C. Kuciewicz, Jr.

Russell J. Landry

In Memory of Ken Savage

John C. Langford

In Memory of Robert W. Sabate'

Jeannie F. Mallick

William J. Malin

George M. Markey, Jr.

Catherine D. McRae

Casey R. Mobley

New Orleans Geological Auxiliary

In Memory of Mary Kirk Barrell

Russell H. Nordwell

In Memory of Daryl A. Danielson, Sr.

In Memory of Shelby W. Smith

Richard A. Olsen

In Memory of Robert W. Sabate'

William S. Peirce

Elizabeth M. Petro

Edward B. Picou Jr.

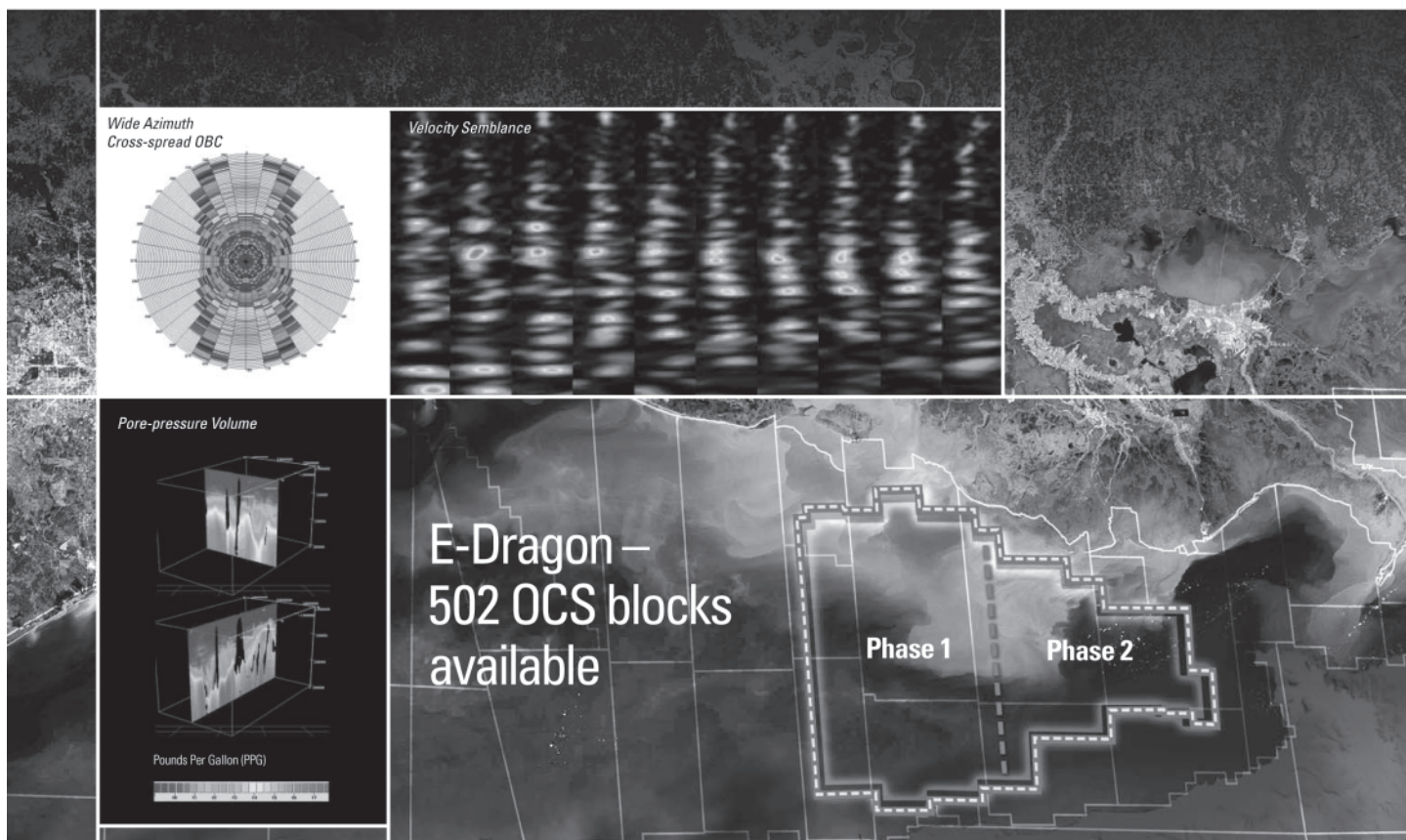
In Memory of Richard W. Boebel

In Memory of Robey H. Clark

Brenda E. Reilly

---continued on page 31 ---

Beyond Seismic Solutions



Take Geophysics Further for your Exploration, Exploitation and Engineering

Multiclient^E

Combining the seamless Schlumberger expertise of WesternGeco and Oilfield Services, we are taking the reprocessed E-Dragon Multiclient data set to a new level with the introduction of *Beyond Seismic Solutions** – incorporating well-calibrated seismic and derivative products to facilitate the generation of earth models.

Incorporating the latest advances in seismic and reservoir technology:

- Wide-azimuth Cross-spread OBC – improved imaging and illumination
- Velocity Fields – high fidelity, high accuracy tomographic velocities to 40,000 ft
- Seismic Calibration – validated with wellbore and checkshot data
- Answer Products – rock properties, lithology, fluid and pore-pressure volumes

Beyond Seismic Solutions – available in three complementary tiered products:

- Exploration Package
- Exploitation Package
- Engineering Package

To find out how *Beyond Seismic Solutions* can benefit you, and for further information please call +1 713 689 1000.

www.slb.com/beyondseismic



*Advertising space is
available for the NOGS
LOG - Please contact the
NOGS office for
information!*



Collarini Energy Staffing Inc.

**Full-Time and Temporary
Exploration and Production Personnel**

Facilities · Drilling · Production · Reservoir Engineers
Landmen · Geoscience · Information Technology
Health and Safety · Management · Procurement
Accounting · Administrative Support

Houston and New Orleans
(832) 251-0553 · Fax (832) 251-0157
www.collarini.com

Connecting the Industry's Experts



**WOODSIDE
WOODSIDE ENERGY
(USA) INC.**

WWW.WOODSIDE.COM.AU

**71683 Riverside Dr.
Covington, LA 70433
Tel: (985) 249-5300
Fax: (985) 249-5388**

**5151 San Felipe #1200
Houston, TX 77056
Tel: (713) 401-0000
Fax: (713) 401-0088**



Collarini Associates

**4200 South I-10 Service Road, Suite 230
Metairie, Louisiana 70001
(504) 887-7127
(504) 887-7162**

**Reservoir Engineering
Oil & Gas Property Evaluation
3-D Seismic Interpretation
Integrated Field Studies**

**New Orleans • Houston
www.collarini.com**

ATWATER CONSULTANTS, LTD.

REGISTERED AND CERTIFIED PETROLEUM PROFESSIONALS

**GEOLOGICAL, ENGINEERING, GEOPHYSICAL,
TRAINING AND EXPERT WITNESS SERVICES**

**3525 Hessmer Ave, Ste 304
Metairie LA 70002**

**Tel. (504) 581-6527
Fax (504) 524-7798**

MURPHY

**EXPLORATION &
PRODUCTION
COMPANY - USA**

**131 SOUTH ROBERTSON STREET
NEW ORLEANS, LA 70161-1780**

**P.O. BOX 61780
(504) 561-2811**



CIMAREX ENERGY CO.

**GULF OF MEXICO REGION
GOM, SE La., N. La., MS, AL**

1100 Poydras St.; Suite 1100

Keith Gourgues

New Orleans, Louisiana 70163

Region Manager

504-586-1815 / Fax 504-586-9035

NORTHCOAST OIL COMPANY

**610 E. Rutland St.
Covington, LA 70433
(985) 898-3577
(985) 898-3585 FAX**

**Jack M. Thorson
Eric C. Broadbridge
J. Daryl Gambrell
Raymond W. Stephens**

**(832) 242-6000 (O)
(713) 917-0493 (O)**

**(504) 931-7506 (C)
johnjurasin@jurasinoilgas.com**

JURASIN OIL & GAS

**9700 Richmond Ave., Suite # 124
Houston, TX 77042-4821**

**JOHN M. JURASIN
President**

**Cert. Pet. Geologist #4284
Cert. Prof. Earth Scientist #1961**

 <p>Shoreline Gas Inc. www.shorelinegas.com Full Service Natural Gas Marketing</p>	<p><i>Advertising space is available for the NOGS LOG - Please contact the NOGS office for information!</i></p>
<p>ANSYTHE Donald I. Andrews 504-887-3432</p> 	<p>H. WARREN BELL Oil and Gas Exploration 2500 Tanglewilde, Suite 485 Bus (713) 266-7297 Houston, TX 77063-2126 Fax (713) 266-7298</p>
<p>BOO-KER OIL & GAS CORP. Gray S. Parker 826 Union, Suite 300 Bus. (504) 581-2430 New Orleans, LA 70112 Fax (504) 566-4785</p>	<p>PHELPS GEOSCIENCE Onshore Gulf of Mexico Geology and Geophysics Prospect Generation and Evaluation Houston, TX jsfphelps@yahoo.com (281) 398-5208</p>
<p>C & R EXPLORATION, INC. Carlo C. Christina Lawrence G. Ringham</p>	<p>R. W. BOEBEL Petroleum Geologist 170 Broadway Street, Suite 321 New Orleans, LA 70118 (504) 866-4313</p>
<p>C. R. RONDEAU Petroleum Geologist 119 W Southland Ave. Ironwood, MI 49938 Res. (906) 932-4692</p>	<p>RAFIDI OIL AND GAS, INC. Jaser N. Rafidi, President 4415 Shore Dr., Suite 202 Bus. (504) 722-2942 Metairie, LA 70006 Fax (504) 888-5539; Res. (504) 888-1661</p>
<p>CLASSEN EXPLORATION, INC. James S. Classen Looking for close in deals P.O. Box 140637 Bus. (208) 854-1037 Boise, ID 83714 classenllc@msn.com Fax (208) 854-1029</p>	<p>ROY C. WALTHER Petroleum Geologist 2421 Prancer Street Bus. (504) 392-8513 New Orleans, LA 70131 Res. (504) 392-9332</p>
<p>COLLES C. STOWELL Oil and Gas Consultant 2288 Chisolm Trail Salado, TX 76571 (254) 947-8977</p>	<p>RUDOLF B. SIEGERT Petroleum Geologist P.O. Box 2740, Slidell, LA 70459 (985) 641-4265</p>
<p>EDWARD B. PICOU, JR. Consulting Micropaleontologist - Retired 228 St. Charles Ave., Suite 1330 C Bus. (504) 529-5155 New Orleans, LA 70130 Res. (504) 282-3096</p>	<p>STONE ENERGY CORPORATION James H. Stone, Chairman of the Board David H. Welch, President & CEO LL&E Tower, Suite 2650, 900 Poydras St. New Orleans, LA 70112-4000 (504) 581-7766</p>
<p>D-O-R ENGINEERING, INC. 3-D and Geoscience Services 120 Oil Center Dr., Bldg. 12 Bus. (337) 233-2378 P.O. Box 51707, Lafayette, LA 70505 Fax (337) 233-2907</p>	<p>TONY CAROLLO Consulting Geologist Unitization Geosteering Field Studies 1701 Peach Street Bus. (504) 885-0004 Metairie, LA 70001 Res. (504) 885-6829</p>

Memorial Fund donations, continued from page 27:

Edmund L. Russell
In Memory of Francis X. Bland
John C. Scheldt
George W. Schneider, Jr.
In Memory of William B. Rodan
George D. Severson
Monte C. Shalett
Robert C. Shoup
Rudolph B. Siegert
In Memory of Robert W. Sabate'
Daniel L. Smith
Dr. J. O. Snowden
Dave Sollenberger
In Memory of Des Utterback

Raymond O. Steinhoff
In Memory of Harold E. Vokes
Thomas A. Tucker
Scott A. Wainwright
Roy C. Walther
Arthur S. Waterman
William M. Whiting
Whitney National Bank Officers and Directors
In Memory of Richard W. Boebel
Armour C. Winslow
In Memory of Rita Menzel Winslow
Frances A. Wiseman
In Memory of Steve Widdicombe
James W. Yeldell, Jr.
Jim Zotkiewicz

In Memory of Bill Craig

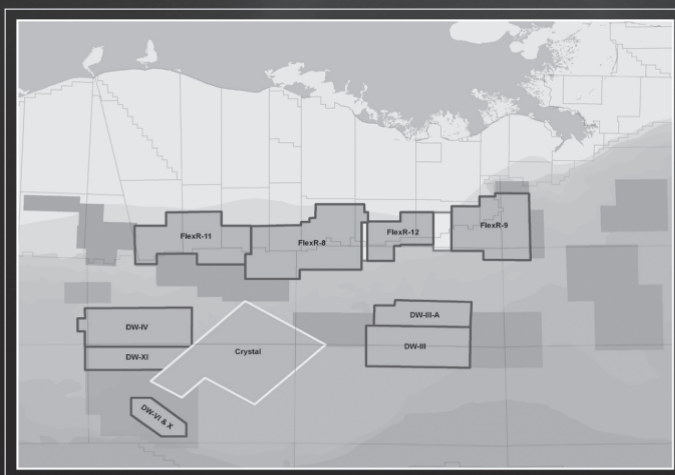
Chevron
M. R. "Bob" Douglass
Bernard L. Hill, Jr.
Jeff Jandegian
John C. Scheldt
James R. Strahan
Candace V. Strahan

Luncheon "Roundup" Donations

PGS. Clearly New Data.

blocks of new data

PGS announces its largest new data offering for this year's lease sales.
1,350 blocks of new data which is clearly imaged with pre-stack depth migration. This is an excellent opportunity to review our clearer images, your most important tool in your lease sale evaluations.



Western Lease Sale Area

» Keathley Canyon: **DW-VI***, **DW-X***
and **Crystal WATS**

Central Lease Sale Area

South Additions:

- » West/East Cameron: **FlexR-XI**, *in progress*
- » Vermilion: **FlexR-VIII**
- » Eugene Island: **FlexR-VIII ext.**
- » Ship Shoal/South Timbalier: **FlexR-XII**,
in progress

Deepwater:

- » Ewing Bank/Mississippi Canyon: **FlexR-IX**
- » Garden Banks/Keathley Canyon: **Crystal WATS**
- » Green Canyon/Walker Ridge: **DW-III**

** marketed by GPI*

Please take a moment to review our coverage at:
www.pgs.com/new_GoM_Data

For further information please contact your PGS
account manager.

Houston
Tel: 1-281-509-8000
Fax: 1-281-509-8087
Email: gominfo@pgs.com

A Clearer Image
www.pgs.com



SURVIVOR™

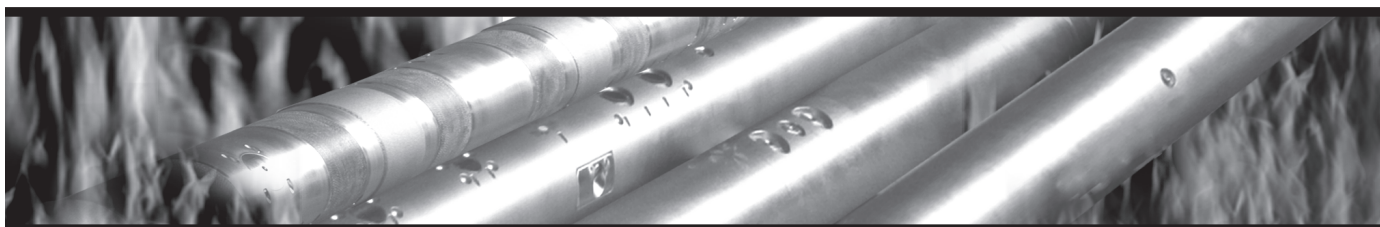
LOGGING-WHILE-DRILLING SUITE

The SURVIVOR™ Suite uses our highly reliable HDS-1 Directional Gamma Ray technology, Array Wave Resistivity tool, Slim Density Neutron Standoff Caliper tool and our Dynamic Pressure Module to create a complete system for logging in hostile drilling environments.

Temperature Rating.....350°F (175°C)

Pressure Rating25,000 psi

Logging Capacity300+ circulating hours



RELIABILITY. ACCURACY. VERSATILITY. WE DELIVER.

e-mail: pfmarketing@pathfinderlwd.com

www.pathfinderlwd.com

© 2006 PathFinder Energy Services, Inc. All rights reserved.

PATHFINDER®

**MARINE PROPERTIES, LLC
BERKSHIRE EXPLORATION CO.**
MONTE C. SHALETT, CPL, PRESIDENT
3030 Lausat Street
Metairie, LA 70001-5924
BUS. (504) 831-7779
FAX. (504) 831-8315

PCI

Paleo Control, Inc.

Houston, Texas
713-849-0044

Drilling Wells, Studies and Data Base

Loyd Tuttle

Frio, SE Texas

Bob Liska

Wilcox, S and SE Texas

Jim Thorpe

Miocene and Cam-Miogyp



WWW.NOGS.ORG

NEW ORLEANS GEOLOGICAL SOCIETY



810 Union Street, Suite 300
New Orleans, LA 70112-1430

DATED MATERIAL