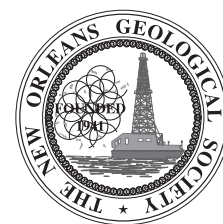


NOGS LOG

WWW.NOGS.ORG



Official Publication of the New Orleans Geological Society, Inc.

May 2007

Volume 47, Number 11

MAY AND JUNE ACTIVITIES

NOGS Events

May 7 - NOGS Luncheon

George Zemlicka of BHP Billiton will present "Depth Imaging of the Drake Structure in the Ultra-Deep Shelf Play of the Gulf of Mexico."

(See Page 7 for Abstract and Biography)

LE PAVILLON HOTEL

Check with concierge or front
desk for location

Lunch served at 11:30am

ADMISSION:

with reservation \$25.00

without reservation \$30.00

Student Member with reservation Free

May 21 - Former Presidents Luncheon

Le Pavillon Hotel, \$35.00 per person. Cocktails on NOGS, Prime Rib for Lunch.

Contact the NOGS office for reservations

June 4 - NOGS Luncheon

NOGS will host "Technomania" in place of a speaker presentation. Technomania will be NOGS' first exhibit hall function in celebration of our sponsors and advertisers.

INSIDE THIS ISSUE

Application for Jack Shirley Memorial SIPES Scholarship	Page 11
Super Science Saturday Recap and Photos	Pages 12-15
NOGS 2007-2008 Candidates	Pages 16-18
NOGS Science Fair Winners	Page 23
Memorial for Frank Bland	Page 29

25 months and 30 days ago this well hit TD
**TOMORROW MORNING YOU WILL
KNOW WHAT THEY KNOW.**



GOM New Release Data

Beginning August 1st, A2D Technologies will be the sole provider of Gulf of Mexico New Release digital LAS well log data resulting from its contract with the Minerals Management Service. Every well drilled in the Gulf of Mexico will be available immediately online the day it is released.

For more information, visit www.a2d.com/newrelease/



Your Well Log Data Marketplace

www.a2d.com

NOGS Office

Office Manager: Annette Hudson

Office Hours: 8:30am – 3:30pm on Monday-Wednesday-Friday

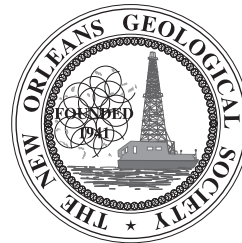
Tel: 504-561-8980 • Fax: 504-561-8988

E-mail: info@nogs.org • Website: www.nogs.org

The office is located at Suite 300, 810 Union Street, New Orleans, LA 70112.

Correspondence and all luncheon reservations should be sent to the above address.

Sent to press on April 24, 2007.

**BOARD OF DIRECTORS**

		Company	Phone	E-mail
President	Michael N. Fein	W & T Offshore	504-210-8148	mikef@wtffshore.net
Vice President	Robert G. Murphy	ORX Resources, Inc.	504-581-1806	bmurphy@orx.com
Secretary	Jeanne F. Phelps	Phelps Geoscience Serv.	504-931-5651	jsfphelps@yahoo.com
Treasurer	Reino F. Clark	MMS	504-736-2711	reino.clark@mms.gov
President-Elect	Art Johnson	Hydrate Energy	504-464-6208	artjohnson51@hotmail.com
Editor	Robert Rooney	CLK Energy	504-529-6100	rrooney@clkenergy.com
Director 2007	William Whiting	Consultant	504-947-8495	bootscon@aol.com
Director 2008	Alfred H. Baker, Jr.	Beacon Exploration, LLC	504-836-2710	abaker1006@aol.com
Director 2009	Willis E. Conatser		504-469-2496	weconatser@aol.com

COMMITTEE

	Chairperson			
AAPG Delegates	Thomas C. Bergeon	Century Exploration	504-832-3772	tom.bergeon@centuryx.com
AAPG Student Chapter	Bobby Cosentino	Tulane University	504-865-5198	rcosentino@tulane.edu
AAPG Student Chapter	Bryan Rogers	UNO	504-736-2772	thgem@gmail.com
Advertising-Log	Jennifer Connolly	Shell	504-728-6411	jennifer.connolly@shell.com
Awards	Michael N. Fein	W & T Offshore	504-210-8148	mikef@wtffshore.net
Ballot	Reino F. Clark	MMS	504-736-2711	reinoofclark@hotmail.com
Best Paper	David E. Reiter	Dominion E & P Inc.	985-893-8072	david_e_reiter@dom.com
Continuing Education	Jeanne F. Phelps	Phelps Geoscience Serv.	504-931-5651	jsfphelps@yahoo.com
Employment Counseling	Paul J. Post	MMS	504-736-2954	paul.post@mms.gov
Entertainment	Art Johnson	Hydrate Energy	504-464-6208	artjohnson51@hotmail.com
Environmental	Daisy Pate	Eustis Geotechnical Eng.	504-613-5798	dpate@eustiseng.com
External Affairs	Michael A. Fogarty	Pennant Exploration	504-891-5400	fogarty@airmail.net
Field Trip	David Garner	Shell	504-728-6154	david.garner@shell.com
Finance and Audit	David E. Balcer	Chevron	504-592-6725	dbalcer@chevrontexaco.com
Historical	Edward B. Picou, Jr.	Consultant	504-529-5155	epicou@bellsouth.net
Membership/Directory	Penne Rappold	Shell	504-728-4338	prappold@gmail.com
New Geoscientists (NGNO)	TBA			
Nominating	Brenda E. Reilly	Energy Partners Ltd	504-799-4811	breilly@eplweb.com
Non-Technical Education	Duncan Goldthwaite	Consultant	504-887-4377	dgoldthwt@aol.com
Office Operations	Scott A. Wainwright	Mustang Energy	504-889-2700	swainwright@mustangenergy.com
Publications Sales	Edward B. Picou, Jr.	Consultant	504-529-5155	epicou@bellsouth.net
Photography	George H. Rhoads	Chevron	504-592-6873	grhoads@Chevron.com
School Outreach	Thomas C. Bergeon	Century Exploration	504-832-3772	tom.bergeon@centuryx.com
Scouting	David Gillis	Schlumberger	504-592-5360	gillis1@new-orleans.oilfield.slb.com
Sponsorship-Houston	David G. Cole	Consultant	832-689-0411	D.G.Cole@sbcglobal.net
Sponsorship-New Orleans	Leslie Broussard	Diversified Well Logging	504-352-4612	sales@dwl-usa.com
Technical Projects	Jeanne F. Phelps	Phelps Geoscience Serv.	504-931-5651	jsfphelps@yahoo.com
Ad Hoc Committee on				
University Support	Michael J. Gallagher	Dominion	504-593-7480	Michael_J_Gallagher@dom.com

NOGS LOG STAFF

Editor	Robert Rooney	CLK Energy	504-529-6100	rrooney@clkenergy.com
Editor-Elect	Timothy J. Piwowar	Shell	504-728-4066	tim.piwowar@shell.com
Auxiliary	Beverly Kastler	NOGA	504-286-0879	kastler1@aol.com
Calendar	Ryan M. Ott	Chevron	504-592-6803	ottrm@Chevron.com
Info Tidbits	Robert Rooney	CLK Energy	504-529-6100	rrooney@clkenergy.com
Drill Bits	Paul J. Post	MMS	504-736-2954	paul.post@mms.gov
Webmaster	Jannette Sturm-Mexic			webmaster@nogs.org

NOGS AUXILIARY

Officers		Phone	Directors	Year	Phone
President	Susie Baker	504-466-4483	Peggy Campbell	2007	504-283-2505
1st Vice-President	Linda Peirce	504-393-7365	Ann Gilbert	2007	504-889-2104
2nd Vice-President	Jean Jones	540-738-8091	Dolores Murphy	2007	504-393-0878
Secretary	Judy Lemarie'	504-393-8659	Carol Andrews	2008	504-887-3432
Treasurer	Peggy Rogers	504-392-6323	Alma Dunlap	2008	504-737-2678
Parliamentarian	June Perret	504-881-9357	Earleen Rodan	2008	504-887-4370
Member-at-Large	Beverly Kastler	504-286-0879			

--- NOGS Contact List continued on page 20 ---

see **clearly**

At IHS, we believe “data quality” includes delivering it, just the way you want it.

Data on demand—Transactional or subscription, online or on your network—whatever your needs, you can access our data when, where and how you need it.

Specialty applications — Link & sync our well, production and log data with your interpretation and other software via IHS Enerdeq™ or, load 27 U.S. spatial layers into ESRI tools for geo-spatial mapping.

One-button exports — To the application of your choice, after you've honed your area-of-interest with Enerdeq's browse, map & query tools.

Whether you're powered by your laptop or your corporate E&P portal, if you're plugged in, you can access the industry's best data. With Enerdeq, our flexible data integration platform, we can tailor data access & delivery to your exact needs, from activity alerts to spatial data mining. You choose the place—office, coffee house or boardroom.

See for yourself. Visit ihs.com/energy/bestdata for a demo of Enerdeq, or to browse and order well, production and log data for your area of interest.

See further. See opportunity. See clearly.





from the President

Letting Go

A good friend in another city recently called me to discuss how to follow-up on a project that had just gone down in flames. My friend felt he had an obligation to distribute some data relevant to the project, despite the finality of the decision. Sometimes, when you get very close to a project, when you develop a passion for it, you become far more emotionally involved in it than is particularly healthy. We have all done that, and I remember it being called "married to the prospect". My advice to my friend was reasonably simple: fulfill the promise you made to the client in completing the work, but otherwise, let it go. Rather than trying to resurrect a project that had no chance of revival, to me it seemed far more important to move on to projects that had a better chance of future success. We could not afford to input more time and energy on something that was not accepted, but had to put future energy into creating value elsewhere.

Letting go is a tough thing to do. I have already written about some things I wanted to do this year as your president, but had to abandon for one reason or another: expanding the website, and rebuilding the NGOS, for

example. We always need to remember that there is only one paid person in NOGS, the rest of us do this in our "spare time". We have jobs, sometimes quite intense, and families who deserve the same intensity.

Maybe I am lucky that in my old age I have learned how to stop worrying about things I cannot control, and just to do the best I can on things upon which I can control my own destiny. As light as my W&T operational duties have been, it has given me the time to do regional work, get ready for the October lease sale, prepare prospects, and to work NOGS, GCAGS, and AAPG issues. I have been very fortunate to not have to deal with the issues many of you have had regarding employment. To say that we have all "been there", is an injustice to those still trying to feed families, and especially to those who have continued their professional commitments in spite of it. I hope that when you land, when the dust settles, that you can enjoy doing geology again, and with regard to the other stuff, life is too short: just relax and let it go.

Michael Fein

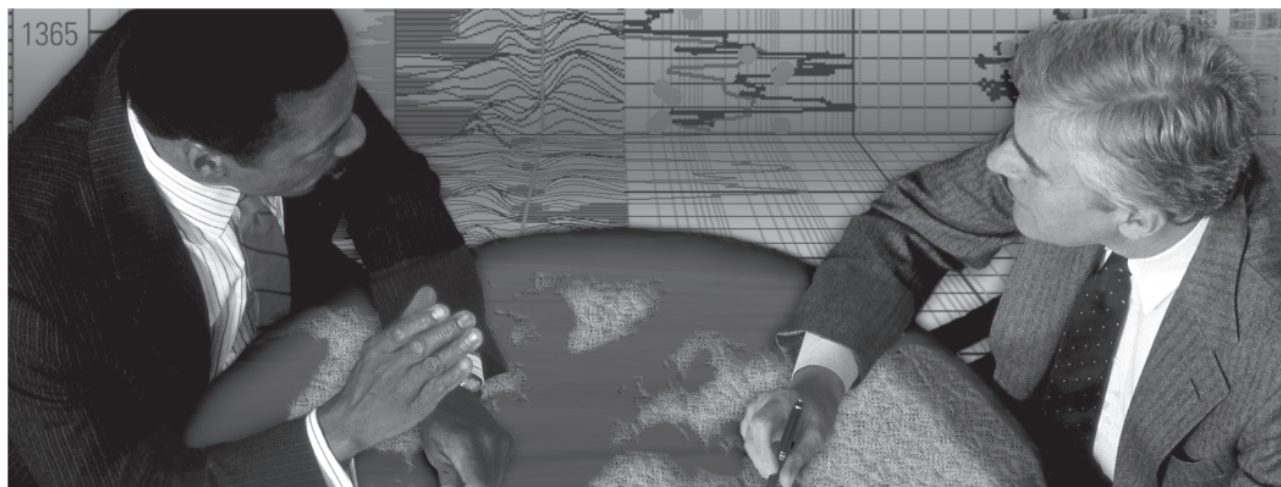
FORMER PRESIDENTS LUNCHEON

NOGS 2006- 2007 Board of Directors
Honorary Lifetime Members

Le Pavillon Hotel
Monday May 21, 2007
\$35.00 per person

Cocktails on NOGS
Prime Rib for Lunch

Schlumberger formation evaluation solutions deliver the answers you need. Our extensive portfolio of services, leading-edge technology, and advanced conveyance options keep you in communication with your well throughout its life cycle.



With formation evaluation technologies from Schlumberger, you can make the best decisions for optimized performance in every well.

The formation evaluation one-stop shop

Whether you are logging in open hole or behind the casing, our broad selection of services ensures the best solution for acquiring formation evaluation data. Tools can be conveyed while drilling or on wireline or pipe. We offer many specialized evaluation capabilities, from density, neutron porosity, and resistivity to borehole imaging, nuclear magnetic resonance logging, borehole seismic, formation pressure testing, and fluid sampling. Advanced triple-combo logging options include the VISION* formation evaluation and imaging-while-drilling services. Coupled with Pulse* telemetry and surveying services, the VISION family provides real-time formation evaluation data and enables optimum well placement.

High-speed wireline measurements are recorded with the Platform Express* logging services. The SlimXtreme* platform is designed for high-pressure, high-temperature environments and the ABC* Analysis Behind Casing services are used after casing is set.

Expert interpretation from the engineers and geoscientists of Schlumberger Data & Consulting Services brings all your data together to give you the answers you need. This expertise is available after logging is complete or as real-time two-way wellsite communication through the InterACT* real-time monitoring and data delivery system.

Schlumberger delivers leading-edge technology and interpretation expertise for all your formation evaluation needs, so every well benefits from the very best information.

For more information visit
www.slb.com/oilfield/formation_evaluation/

*Mark of Schlumberger

04-FE-114

Schlumberger

May 7 Luncheon Presentation

Depth Imaging of the Drake Structure in the Ultra-Deep Shelf Play of the Gulf of Mexico

presented by

George Zemlicka

BHP Billiton Petroleum (Americas)

Original Co-authors:

George Zemlicka, Robert J. Bruce, Peter Gale, John E. G. Savage, and Karen L. Sherlock - BHP Billiton Petroleum (Americas) Inc.

Dong-Sheng Li, Mike Plumlee, and William J. Schneider - Fairfield Industries Inc.

Glen Denyer, Randol Haworth, and Jay Menard - Newfield Exploration Co.

Ricardo J. De Campos - Petrobras America Inc.

ABSTRACT

The offshore Gulf of Mexico Ultra-Deep Shelf Play has recently generated exploration interest due to numerous large undrilled structures, potential for huge gas reserves, and close proximity to existing infrastructure. The Miocene and Paleogene reservoir targets are updip and downdip of productive equivalents and often beneath shallower producing fields. A critical element of the play is to obtain accurate and high quality depth imaging of the prospect trap to: 1) validate the initial time structure interpretation; 2) refine prospect reserve estimates; and 3) high-grade exploration well locations. A common play trap type is an overall 3-way closure against a fault or salt weld, with a 4-way closure component.

The Drake Prospect, in the South Marsh Island protraction area, is representative of a typical Ultra-Deep Shelf prospect. The trap is interpreted as a 3-way against a steeply-dipping weld, with over 24,000 acres of structural closure. The primary target is the Paleogene, thickened

within the core of the structure, at drill depths of 30,000'. The mean reserves are estimated in excess of 1.7 TCF.

BHP Billiton, seismic contractor Fairfield, and partners Newfield and Petrobras have completed a proprietary pre-stack depth migration project, covering the Drake structure. The key to the high quality depth image was the construction of a detailed velocity model, with sediment velocities derived from tomography and migration velocity analysis, and inclusion of a number of salt bodies and velocity variations across a composite weld surface.

The current depth imaging results show the steeply-dipping to overturned trap-defining weld and the low reflectivity Lower Paleogene section in marked contrast to the high amplitude reflectors of the surrounding section. The depth imaging is currently being used to refine an exploration well location designed to test the Drake Prospect.

BIOGRAPHY

George Zemlicka has been a senior geoscientist on the Gulf of Mexico Exploration Team at BHP Billiton in Houston, Texas, since August, 2004. He worked previously for 16 years with Exxon and ExxonMobil in Houston, in Stavanger, Norway, and in Aberdeen,

Scotland, on various exploration and production assignments. He received his B.S. degree in geology from the University of Michigan in 1986 and his M.A. degree in geophysics from the University of Texas at Austin in 1988. George is a member of the AAPG and the SEG.

THE LUNCHEON RESERVATION DEADLINE IS MAY 2, SO CALL THE NOGS OFFICE - TODAY!

“And Looking Ahead...”

The next NOGS Luncheon will be June 4. NOGS will host "Technomania" in place of a speaker presentation. Technomania will be NOGS' first exhibit hall function in celebration of our sponsors and advertisers. Contact the NOGS office at 561-8980 or use the e-link on the NOGS website (www.nogs.org) to make your reservation.

BLAST FROM NOGS PAST

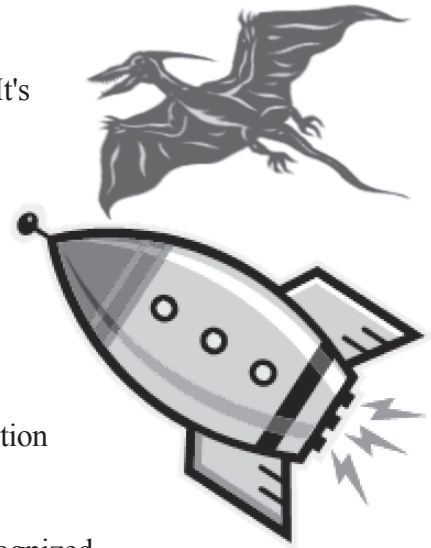
20 Years Ago (May 1987): From Richard A. Edmund's President's Column: "It's time for some serious talk about finances and how you and I are being affected by the current trends in the local economy. Your Board of Directors and committees have been wrestling with this problem for several months and new guidelines are in place for all NOGS functions, educational or social, to be on a "Break Even or Better" financial basis."

30 Years Ago (May 1977): Entertainment Chair Art Christy touted the success of the NOGS Crawfish Boil, which was held Friday, April 1 and "attended by 195 couples and one stag drunk, making it the largest NOGS entertainment function ever."

40 years Ago (May 1967): The President's Corner by H. Grady Collier Jr. recognized several committees including the publications committee for the soon to be finished Volume II, Oil and Gas Fields of SE Louisiana.

50 years Ago (May 1957): The single page NOGS newsletter (the NOGS LOG predecessor) announced that tickets were available for the Society's Picnic at Twin Oaks on May 11 and the Spring Dance at the Old Airport Lobby on May 18.

- Tim Piwovar



INFO TIDBITS

✂ **AAPG Digital Document Archives:** Among the many benefits of AAPG membership, one that I have found to be extremely useful is the digital document archive located on the AAPG website. The search capability allows a geoscientist immediate access to the historical AAPG publications with full search capability. Having moved jobs from a major oil company to an independent, I thought access to regional data might be a problem, but thanks to this service I am able to review new areas and focus in on the most relevant publications. It is possible to go from a level of minimal understanding of a particular area to being conversant within a single day. Because the information is mostly in pdf format, the original drafted quality of the images is retained, and can be used in the preparation of displays, such as Powerpoint posters, that allow the communication of regional and complex concepts to management and colleagues in a short amount of time. In this age of manpower shortage, the AAPG digital archive effectively allows a single geoscientist to access the collective work of thousands of past authors of AAPG Bulletin papers at minimal cost. Once in the AAPG website, all it takes is your AAPG member number and a password to access the archive.

The AAPG website is located at:
www.aapg.org



A·A·P·G

American Association of
Petroleum Geologists

An International Geological Organization

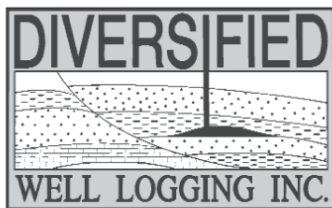
www.aapg.org

Robert Rooney



Relax. We'll keep you posted.

Your rig is offshore and you are not. How do you know what's going on so many miles away? You know because we tell you. Daily or even hourly, Diversified Well Logging's engineers update you on the status of your rig. We are your eyes and ears, especially when it comes to deep water or high pressure, high temperature areas. Diversified offers 24-hour surface evaluation. We provide secure and customized real-time data communication, in-house research and development and 24/7 on-call support for our equipment and our engineers. Whether you have a 10-day job or 110-day job, we provide the specialized attention you require. So, relax. We're with you every step of the way.



Serving the Gulf Coast for over 40 years.

New Orleans • Lafayette • Houston • Dallas • Corpus

800.280.2096

711 West 10th Street • Reserve, LA 70084 • Phone: 985.536.4143 • Fax: 985.536.2427
sales@dwl-usa.com

Precise Data.

"Click"

Unlock the Potential of Your Reservoir.

Today's reservoirs are more challenging than ever. To unlock their potential requires absolutely precise data. OMNI Laboratories has established higher standards, more thorough protocols, and meticulous quality control measures to ensure unsurpassed accuracy. Plus, we have assembled the finest scientists in the field to provide superior interpretation and analysis. When precise data is paramount, choose OMNI Laboratories.

At OMNI, We've Got the Answers.



13 LOCATIONS IN THE U.S., CANADA AND SOUTH AMERICA • HEADQUARTERS: HOUSTON, TX • 832-237-4000 • WWW.OMNILABS.COM

APPLICATION FOR THE JACK SHIRLEY MEMORIAL SIPES SCHOLARSHIP

LAFAYETTE CHAPTER

Name: _____

Address where you reside: _____

University attending: _____

Major Study:¹ _____, Classification² _____

GPA in major: _____, GPA overall: _____

What are your post graduation plans?

Do you have a financial need for the Scholarship? ____ Yes, ____ No.

If yes please explain your financial situation. Are you also working part-time or full-time? What other sources of funding do you have (scholarships, loans, STEP grant, etc.)? Note that this scholarship may be given to a student based solely on merit or based on a combination of merit and need.

¹ Should be either Geology, Geophysics, Petroleum Engineering or a closely related field

² Freshman, Sophomore, Junior, Senior or Graduate Student (M.S or Ph.D.)

Please submit 3 personal recommendations along with this application. These may not be students.

SCHOLARSHIP ELIGIBILITY

Scholarships shall be awarded annually at the Lafayette Chapter's September meeting. The Foundation Board of Trustees* shall make selection of the winning candidate during the summer prior to the scholarship awards from a listing of all applicants after communication with the chairman of the respective department of study of the winning applicant.

Applicants must be a currently enrolled upper division or graduate student in an earth science discipline of Geology, Geophysics, Petroleum Engineering or closely related field and have maintained a minimum 3.0 grade point average, both overall and in the major field of study, and which must be maintained to remain eligible for additional consideration. The applicant must submit a fully completed Foundation application with three (3) recommendations by the end of the spring semester of each year.

GUIDELINES

1. The applicant should have local ties to a Lafayette Chapter SIPES MEMBER whose home residence is in the Acadiana area and/or be a student of a university in the Acadiana area.
2. The applicant should have high moral and ethical conduct, be in financial need and demonstrate a genuine interest in his or her major field of study.
3. The applicant should include on application a statement of intent for post graduation study and or work. Applicants who demonstrate a desire to pursue a career related to their field of study will be preferred.

Please send to: SIPES
Attn. Scholarship Committee
P.O. Box 52931
Lafayette, LA 70503

* Until a Foundation Board can be assembled and approved the current Scholarship Committee will serve in place of the Foundation board.

Super Science Saturday Recap



Saturday April 7th, NOGS hosted Super Science Saturday at the Louisiana Children's Museum after a year and a half absence following Hurricane Katrina. This outreach event was heavily attended despite being held on Easter weekend on the same day as the Crescent City Classic. Those who attended had the opportunity up close and personal to learn how to become a budding paleontologist or to drill for exploration and development wells in the ever popular oil finder game. Our volunteer base consisted of members of

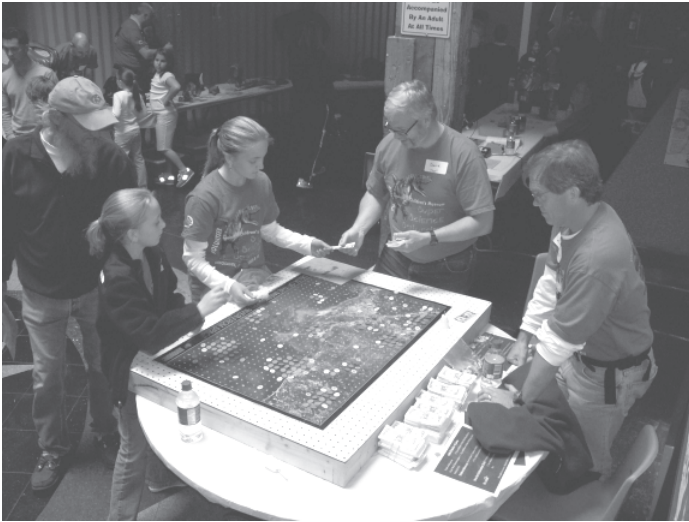
NOGS, Southeastern Geophysical Society, Desk and Derrick, API Delta Chapter, Tulane, UNO and John Ehret High School students. It was a very engaging day with a lot of hands on activities for the kids and adults as well. We had many new volunteers who were joined by a core group of experienced regulars. Also several younger volunteers were given an excellent opportunity to teach and performed admirably. It was an exciting day and a great opportunity to show children that science can be fun!

I would like to thank our wonderful volunteers for making this event possible: David Lynch, John Dribus, Casey Mobley, Jennifer Connolly, Lisa Kennedy, Louis Willhoit, Karen Ohlsson and her daughter, Pat Netherland and her sister Nora, Jim, Claire and Meredith Zotkiewicz, Richard Mongan, Dave Cope (who gave out fossil samples), Alex Funnell, Will Conatser, Bill Whiting, Miranda Leigh Robbins, Justina Ann Horan, Eric Zimmerman, Anna Strimas, Daisy Pate, Karen and Taylor Benoit, Penne Rappold, Chuck Holman, Lisa Buckner (who also ran the Classic!), Art Johnson, Josie Nevitt, Bruce Sherman, Ed Picou, Mike Fein, Bob, Hillary and Helen Hafner, Al and Elizabeth Melillo, Duncan Goldthwaite, Shelly Gisevious, Nora Nicosia, Theresa Ohlsson, and Patrick Bergeon.

-Tom Bergeon









NOGS 2007-2008 CANDIDATES

For PRESIDENT ELECT

CLARK/WHITING



Reino Clark grew up in Northern New Mexico and Southern Colorado and completed a B.S. in Geology in 1980 at Fort Lewis College in Durango, Colorado. After taking an M.S. in Geology at the Colorado School of Mines in Golden, Colorado he went to work for Union Oil Company of California in their Oklahoma City office.

After working for ten years exploring in the Anadarko and Arkoma Basins he worked for three years in Unocal's Environmental Group in Beaumont Texas. In 1995 he moved to Lafayette, Louisiana and worked the onshore and offshore Gulf of Mexico for Spirit Energy until 2000. In the same year he took a position with SCA and moved to New Orleans to work at the ExxonMobil office for two years. In 2003 he went to work for the Minerals Management Service in New Orleans where he works today.

Reino lives in Mandeville, LA, where he and his wife Wendy have two children, one attending Fontainebleau High School, and one enrolled in the Geology and Geophysics Department at LSU.



Bill Whiting is a consulting Geologist with more than 35 years experience in the Gulf Coast Area. Born and raised in Albion Michigan along the Albion-Scipio Trend he had an early exposure to the Oil and Gas Industry. While in college schooling for his MS degree, he worked weekends for a Consulting Geologist in Ohio on the

"Trempealeau Trend" He obtained his BS Degree with honor in 1963 and his MS Degree with an overall grade point of 3.8 in 1965, both in Geology from Michigan State University.

In 1963, Bill began a 27-year career with Chevron Oil Corporation starting as a development geologist in the Jackson, Mississippi office with assignments in the Mississippi and North Louisiana Interior Salt Basins. In 1969 he was transferred to the New Orleans Office and held several positions in the Exploration and Production Divisions both onshore and offshore. He was a District Development Supervisor and Operations Geologist on the Region's Staff.

He has been a member of NOGS since 1970, the AAPG since 1969, GSA, SEG associate and is a Registered Professional Geologist #435 in the State of Mississippi. NOGS activities have included the Awards and Field Trip Committees, and a By-laws ad-hoc committee. He was chairman of the Ballot committee 2000-01. Bill served as Treasurer 2000-01 and a Memorial Foundation Trustee 2001-02. He served as Vice-President 2002-2003 and a Memorial Foundation Trustee 2003-05. He also is a Director of NOGS 2004-2007 and an AAPG Delegate through 2009.

For SECRETARY

RAPPOLD/ROONEY



Penne Rappold received a BS degree in geology from the University of New Orleans and has spent the last 29 years working both Exploration and Production projects in the offshore Gulf of Mexico for Shell E&P. After retiring from Shell in 1999, Penne began geologic consulting work and is currently assessing redevelopment

opportunities in several deepwater fields for Shell. Professional memberships include AAPG and NOGS with participation on the Continuing Education Committee and currently Membership Committee Chairman.



Carol Rooney is a Geologist with 14 years experience in the Gulf Coast Offshore Area. Carol was born in New Orleans, raised in Metairie, and graduated from Archbishop Chapelle High School, Loyola University (1985, B.S. Geology, Cum Laude), and Indiana University (1988, M.S. Geology). Carol began

her professional career in 1988 as an Associate Geologist for Texaco, Inc. Carol left Texaco in 1994 and joined Landmark Graphics Corporation as an Onsite Consultant, primarily at Amoco in New Orleans. In 1999, Carol opted to leave Landmark in order to remain in New Orleans, and worked as an Independent Landmark Consultant for Dominion E&P until December 2002. From that point forward, Carol has been a full time Mother, but has remained an active member of NOGS, serving for the past year as an AAPG Delegate.

NOGS 2007-2008 CANDIDATES

For VICE PRESIDENT

BALCER/ROONEY



Dave Balcer received a BS (1978) and an MS (1980) in Geology from The Ohio State University. He joined Chevron (New Orleans) in 1980 and has enjoyed both asset development and exploration assignments onshore and offshore Gulf of Mexico. He is currently an exploration geologist with Chevron focusing on the eastern Gulf of Mexico

Mesozoic trend and regional studies in the central gulf area.

Dave has been a member of NOGS and AAPG since 1980. He served as the NOGS Treasurer during 2005 -2006. He is presently an AAPG delegate (2009), Trustee of the NOGS Memorial Fund (2009) and member of the NOGS Finance and Audit Committee. When NOGS hosted the 1998 GCAGS Convention in New Orleans, he volunteered to coordinate the Tobin Theater. Wanting to do something different, he replaced the Tobin Theater with a "virtual reality" visualization exhibit hosted by the University of Houston. This departure from the traditional Tobin Theater was well received and duplicated at subsequent conventions.



Robert Rooney is a geoscientist with CLK Energy in New Orleans. Before Joining CLK, he was a Staff Geologist with Shell E&P - Offshore Exploration, from 1997 to 2005. Robert has also worked as a geologist for Freeport Sulphur Company, and has conducted exploration field studies on South Louisiana salt domes as an independent consultant. He has been employed with Dresser Industries, Reservoirs, Inc., Chemfix Technologies, and the Minerals Management Service as a Student Aide. Born in New Orleans he attended Archbishop Rummel High School, and the University of New Orleans where he received his Bachelor of Science in Earth Sciences in 1986.

Robert has served as an AAPG delegate for NOGS in 2002-2004, was Editor-elect for 2005-2006, and is currently the NOGS Editor for 2006-2007. Robert has prepared the Info-tidbits column for the NOGS log since 2005, and has given technical presentations at monthly luncheons for NOGS, and the Lafayette Geological Society. He was also author of a presentation at the 2005 GCAGS Convention in New Orleans which was published in the GCAGS transactions. Robert is an active member of NOGS, AAPG, and HGS. If elected as NOGS Vice President, Robert intends to design the NOGS Luncheon technical program to include more than half of the luncheon topics on exploration case studies and regional studies with an emphasis on the Gulf of Mexico, the balance will include talks related to Coastal issues, and at least one presentation from a local industry leader.

For TREASURER

COPE/MOBLEY



J. David (Dave) Cope holds a B.A. in Physics (Geophysics Area Option) from Rice University as a '78 graduate. He began his career in oilfield service with Schlumberger's Belle Chasse Offshore District, followed by a turn with CRC Wireline. In 1981, he became a geophysicist, first with Getty Oil/Texaco, then ODECO/

Murphy here in New Orleans, until Katrina forced his family (among many) away for a while. A year ago he accepted a position as a geologist with Taylor Energy Company LLC, bringing his family back home. Professional affiliations include SEG, SGS, and SPWLA in addition to NOGS. He is currently serving as Treasurer and Field Trip Chairman for the Gem and Mineral Society of Louisiana, Inc.



Casey R. Mobley is currently employed with Chevron as an Exploration Geologist working in the deep gas trend of the GOM north-central shelf. He has nearly two years of service with Chevron. Prior to his employment, Casey successfully completed the Master's degree program in Geology at the University of New

Orleans, graduating in May of 2005. Casey also holds a Bachelor's degree in Geology from the University of Kentucky. Casey is married with three children.

NOGS 2007-2008 CANDIDATES

For DIRECTOR

LEDET/REITER



Michael Ledet is an independent geologist. He has held positions as an exploration geologist for Getty Oil Company, Odeco Oil and Gas, Consolidated Natural Gas and their successors. Since becoming a member of The New Orleans Geological Society in 1981, he has served on several committees and as Secretary, Vice President, President-Elect and President. Mike

has been a member of the AAPG House of Delegates, the NOGS Memorial Foundation and served as Technical Chairman of the South Louisiana Onshore Exploration Symposium and as a Vice-Chairman for the 2005 GCAGS Convention. He has been awarded the NOGS President's Award, the NOGS Distinguished Service Award and an Honorary Life Membership in NOGS. Mike is an active member of GSA, AAPG and HGS. He attended Nicholls State University and The University of New Orleans.



David E. Reiter graduated from the University of New Mexico in 1980 with an M.S. in Geology. He began his career with Shell Oil Co. in New Orleans as onshore exploration geologist. In 1984, he joined ODECO Oil & Gas (now Murphy E&P Co.) as exploration geologist working primarily the central offshore Louisiana shelf area. He later moved into development geology

with responsibility for several GOM shelf and deepwater fields. In 2005, Mr. Reiter joined Dominion Exploration and Production Company and is currently Senior Staff Geologist in their GOM Shelf Exploration Group.

David has been an active member of NOGS for the past 23 years. He has served as NOGS Best Paper Committee Chairman for the past 14 years. Mr. Reiter has served as a trustee of the NOGS Memorial Foundation Board and is currently a member of the NOGS Nominating Committee. He served as Co-Chairman of the 1996 SPWLA International Symposium, Poster Session Chairman of the 1997 GCAGS Convention, Golf Tournament Chairman for the 2000 AAPG Convention, and Judging Chairman for the ill-fated 2005 GCAGS convention in New Orleans. He was past V.P.-Public Relations and Treasurer of the SPWLA New Orleans Chapter and is currently serving as its V.P.-Membership. He is an active member of NOGS, AAPG, SPWLA, and SEG.

For EDITOR-ELECT

MINER



Mike Miner was born and raised in New Orleans and has recently completed his Ph.D. in Geology at the University of New Orleans. He received a B.S. in Geology and an M.S. in Engineering Geology from The University of Mississippi. He is currently a Research Associate with the UNO Pontchartrain Institute for Environmental Sciences (PIES), where he is a Chief Scientist on the Statewide Barrier Island Comprehensive Monitoring Program (BICM) in association with the U.S. Geological Survey, Louisiana Department of Natural Resources, and the U.S. Army Corps of Engineers. Other projects that he is currently involved with include Hurricane Katrina/Rita impacts on tidal inlets and barrier islands in Louisiana, a U.S. Fish and Wildlife Service study to predict the resilience of the Chandeleur Island chain as a function of restoration options, and a Holocene stratigraphic framework study of the Northern Gulf of Mexico in association

with the U.S. Geological Survey.

Mike is a member of the Society for Sedimentary Research (SEPM), Geological Society of America, International Association of Sedimentologists, American Association for the Advancement of Science, and Coastal Education and Research Foundation.

EXPLORE A WORLD OF OPPORTUNITIES WITH TGS

- Non-Exclusive Seismic Surveys
- Seismic Data Acquisition
- Seismic Data Processing via TGS Imaging
- Integrated Regional Interpretations
- Well Log Data via A2D Subsidiary
- Gravity / Magnetic Data & Services



Seismic



Well Log



Integrated Products



TGS Imaging

www.world-class-data.com

TGS-NOPEC Geophysical Company • www.tgsnopec.com • NORWAY +47 31 29 20 00 • USA +1 713 860 2100 • UK +44 (0) 1234 272122 • AUSTRALIA +61 8 9480 0000



PALEO DATA

▼ *Integrated foraminifera and nannofossil
biostratigraphic services*

▼ *Regional paleo databases*

▼ *Regional biofacies and isopach maps*

▼ *Comprehensive Gulf Basin
Deposystem data/map project*

▼ *Well-site services*

Arthur S. Waterman
Norman S. Vallette
Michael W. Center
Albert F. Porter, Jr.
Thomas M. Reilly
Richard A. George
Ryan D. Weber
Ann Hare
Donna Lacoste
Rhonda Roederer

6619 Fleur de Lis Drive
New Orleans, LA 70124
(504) 488-3711

www.paleodata.com

MCMORAN EXPLORATION CO.



McMoRAN OIL & GAS

www.mcmoran.com
NYSE: MMR

1615 Poydras
New Orleans, LA 70112
(504) 582-4000
Fax: (504) 582-4155

P.O. Box 60004
New Orleans, LA 70160

NOGS CONTACT LIST

--- continued from page 3 ---

MEMORIAL FOUNDATION

BOARD OF TRUSTEES

		Company	Phone	E-mail
2006-07 Chairman	Scott A. Wainwright	Mustang Energy	504-889-2700	swainwright@mustangenergy.com
2006-07 Secretary	Michael N. Fein	W & T Offshore	504-210-8148	mikef@wt offshore.net
2006-07 Trustee	Edward B. Picou, Jr.	Consultant	504-529-5155	epicou@bellsouth.net
2006-07 Trustee	TBA			
2007-08 Trustee	Doug Cristina	Consultant	985-630-5621	dcristina@charter.net
2007-08 Trustee	George T. Froming	Consultant	504-799-1918	gfroming@eplweb.com
2008-09 Trustee	David E. Balcer	Chevron	504-592-6752	dbalcer@chevrontexaco.com
2008-09 Trustee	Tom Klekamp	Amber Resources LLC	985-845-4046	klekamp@bellsouth.net

AAPG DELEGATES

Term Ends

Term Ends		Company	Phone	E-mail
2007	Thomas C. Bergeon	Century Exploration	504-832-3772	tom.bergeon@centuryx.com
2007(a)	J. Stephen Tissue	Chevron	504-592-6030	stevetissue@Chevron.com
2008	Irion Bordelon, Jr.	Cimarex Energy	504-586-3023	Ibordelon@cimarex.com
2008	Carol Rooney	Consultant Geologist	504-835-1909	
2008(a)	James Cearley III	Chevron	832-854-2655	james.cearley@chevron.com
2008(a)	Arthur T. Cerniglia	CIG Exploration	504-780-0097	cigexploration@yahoo.com
2009	David E. Balcer	Chevron	504-592-6725	dbalcer@Chevron.com
2009	William Whiting	Consultant	504-947-8495	bootscon@aol.com
2009(a)	Nancye Dawers	Tulane University	504-862-3200	ndawers@tulane.edu
2009(a)	David Cooke	MMS	504-736-2609	david.cooke@mms.gov



NOGS Membership News & Information

This is your page. We would like to fill it with your news. In addition to professional news from our members; e.g., promotions, transfers, moves, new employer, etc., we also welcome your success stories. Please e-mail items to log@nogs.org.

The 2007 Deepwater Symposium is coming!!

It needs volunteer NOGS help. Please call Tom Hudson at 504-592-7163
or email tom.hudson@chevron.com

New NOGS Members March 2007

Brian Anderson
Seabird Expl. Americas, Inc.
VP Sales
Ste 206 - 1155 N Dairy Ashford
Houston, TX 77079
713-252-4680

Santoso Budihardjo
Dominion
Sr. Staff Geophysicist
Ste 2000 - 1250 Poydras St
New Orleans, LA 70112
504-593-7930

YongXiang "Frank" Li
Tulane University
Depart of EES
6823 Saint Charles Ave
New Orleans, LA 70118
504-862-3195

James A. Menking
Student-Tulane
31 McAlister Dr # 1073
New Orleans, LA 70118
817-808-8877

Kimberly M. Smith
W & T Offshore Inc
Geological Assistant
Ste 1200 - 3900 N Causeway
Metairie, LA 70002
504-210-8174

REINSTATED

James H. Vance, Jr.
Retired Texaco Chevron
34 Grand Canyon Dr
New Orleans, LA 70131

REINSTATED

Mark Wojna
Century Exploration Co
Ste 2800 - 3838 N Causeway
Metairie, LA 70002
504-832-3755

SEI®

Seismic Exchange, Inc.

**Strategic Speculative Surveys
Geophysical Data Marketing & Management**

201 St. Charles Avenue, Suite 4300, New Orleans, Louisiana 70170-4300
Telephone 504.581.7153 Fax 504.581.9591
www.seismicexchange.com

YOUR
**Full Service
National
Seismic Data
Marketing Firm**

New Orleans
Dallas
Houston
Denver
Oklahoma City
Corpus Christi
Tulsa

Chevron



**935 Gravier Street
New Orleans, LA 70112**

(504) 592-6000

"Serving the Oil & Gas Industry Since 1983"

Geological,
Geophysical &
Land Drafting

Anthony Catalanotto

President

Stefani Kelone

Drafting and Design



Geo-Draft, Inc.

A Professional Drafting & Graphics Firm

3349 Ridgelake Drive • Suite 202 • Metairie, LA • 70002

Office: (504) 836-2882 Fax: (504) 836-2877

geodraft@bellsouth.net

CLK ENERGY, LLC

Oil & Gas Exploration and Production

1615 Poydras Street
Suite 1300
New Orleans, LA 70112

(504) 529-6100
(504) 596-2021 [Fax]
www.clkenergy.com

el paso | Production

1001 Louisiana
Room S W 2205 A
Houston, Texas 77002
Office: (713) 420-2600
Fax: (713) 420-1643

NOGS FINDS WINNERS AT 2007 SCIENCE FAIR

On March 15, 2007, the Awards Committee judged the Earth Science and related projects at the Region 9 Greater New Orleans Science and Engineering Fair, held at the First Baptist Church on Canal Boulevard. Judges joining me for the event this year were Monte Shalett (Marine Properties/Berkshire Exploration), Art Johnson (Hydrate Energy), and Eric Zimmermann (Dominion). Also joining us for the category judging was Lisa Kennedy (MMS). NOGS thanks our management and clients for their support in allowing our participation.

The Fair itself had only 138 projects, but that was 138 more than last year. There were not a large number of earth science exhibits, but the quality was excellent. There were, as you would imagine, many studies related to the effects of the storm, some of which were quite innovative and award winning.

Five of this year's six winners were from parochial schools. There were four male and two female winners. The projects dealt with the topics of soils, crystallography, and flooding. The lanthanide project which you will see May 7th is the first pure geologic study, in my 25 years of judging, ever to win the Grand Sweepstakes at Region 9. Jordan Badeaux and his teacher from John Curtis, Ms. Cathy Boucvalt, will be going to New Mexico to represent New Orleans in May at the International Fair. Ms. Boucvalt also had two other of our six NOGS award winners

NOGS will be inviting the two first-place winners and their teachers to the May 7th luncheon. Be sure to come over and congratulate these high achievers with us at that time.

Michael N. Fein
Chairman
Awards Committee

Junior Division

1st Place, \$100
Charles Mentz
Christian Brothers
Title: Soils: Composition, Compaction and Strength
Teacher: Brother Konersman

2nd Place, \$75
Erica Murret
VC Haynes Middle School
Title: Does Storm Surge Affect Salinity in Lake Pontchartrain?
Teacher: Lynda Paddock

3rd Place, \$50
Treyvond White
John Curtis Christian School
Title: Which Type of Soil Lets the Most Water Drain Through
Teacher: Cathy Boucvalt

Senior Division

1st Place, \$100
Jordan Badeaux
John Curtis Christian School
Title: How does "Spiking" Calcite solutions with Lanthanides During Simulated Microgravity Environments Alter Crystal Zoning, Solute Diffusion, and Crystal Morphology?
Teacher: Cathy Boucvalt

2nd Place, \$75
Melody Keel
Ursuline Academy
Title: How Did Katrina's Flood Waters Affect Cypress Trees in City Park
Teacher: Sharon Linton

3rd Place, \$50
Jordan Hanberry
John Curtis Christian School
Title: Gypsum's Effect on Sinkholes and Water Drainage
Teacher: Cathy Boucvalt

South Louisiana and Offshore Exploration and Production Activity

DRILL BITS

- McMoRan Exploration Co. on 26-February updated its exploration and development activities including positive drilling results at Laphroaig and Hurricane Deep.

The Laphroaig exploratory well was spudded 8-April-06, and was sidetracked to a TVD of 18,412 feet (19,515 feet MD). Following an unsuccessful production test in February 2007, the well was deepened to a TVD of 19,060 feet (20,250 feet MD) to test additional targets. Wireline logs indicated that the well encountered a potential 56 net feet of hydrocarbon bearing sands over a 75 foot gross interval. The well, located onshore in St. Mary Parish, LA, can be brought into production promptly utilizing existing infrastructure in the area.

Hurricane Deep, at South Marsh Island Block 217, commenced drilling October 26, 2006 and as of the end of February was being drilled below a true vertical depth of 20,600 feet. Log-while-drilling tools have indicated that an exceptionally thick upper Gyro sand was encountered totaling 900 gross feet. The top of this Gyro sand is credited with a potential of 50 feet of net hydrocarbons in a 53 feet gross interval. The exceptional sand thickness suggests that prospects in the Mound Point/JB Mountain/Hurricane/Blueberry Hill area may also have thick potential Gyro reservoirs. Previous wireline logs in the Hurricane Deep well have indicated 27 net feet of hydrocarbon bearing sands over a 200 foot gross interval in a laminated Rob-L section and a potential 20 net feet of hydrocarbon bearing sands over a 70 foot gross interval in the Operc section. McMoRan plans to continue drilling to a planned true vertical depth of 21,500 feet. If successful, the well could be brought on line quickly using existing facilities in the area. The Hurricane Deep prospect is located in twelve feet of water on OCS 310, one mile northeast of the Hurricane discovery well which is currently producing. This well would be McMoRan's seventh successful well in the OCS 310/State Lease 340 area.

The Cas exploratory well at South Timbalier Block 70 was spudded on 30-January-07, and is being drilled to a PTVD of 25,000 feet. The prospect is located in ~65 feet of water.

A rig is on location at the Cottonwood Point exploratory prospect at Vermilion Block 31 and drilling is expected to commence within the week.

As previously reported, the Blueberry Hill well, Louisiana State Lease 340, encountered four potentially productive hydrocarbon bearing sands below 22,200 feet. Testing of this well commenced in the fourth quarter of 2006 following the receipt of special tubulars and casing for the high pressure well. The well has been perforated; however, production has not been established because of blockage above the perforated intervals. Additional operations to clear the blockage and complete testing of the well are expected in the coming weeks. Information obtained from testing of the Blueberry Hill well and the results of the Hurricane Deep well currently drilling will be incorporated in future plans for the JB Mountain Deep well, as all three areas demonstrate similar geologic settings.

- Mediation failed to resolve Anadarko Petroleum Corp.'s closely watched oil royalty lawsuit against the U.S. Department of the Interior.

In a filing with the U.S. District Court for the Western District of Louisiana, Anadarko said "differences were too great to allow settlement of the case," so more mediation will be unproductive.



Kerr-McGee, acquired by Anadarko in 2006, sued the department last March to prevent the government from collecting royalties on production from oil and gas leases granted between 1996 and 2000 in the deepwater GoM.

Anadarko said it will submit a motion by May 24 asking the court to decide the case before it goes to trial, according to the two-page filing.

If Anadarko prevails, the government could lose up to \$60 billion in royalties industry-wide, according to the U.S. Government Accountability Office.

The two sides agreed to start mediation last June.

The dispute centers around rules implemented by the MMS under a 1995 law designed to spur deep-water GoM exploration to boost U.S. production.

Anadarko, based in Houston, argues that the U.S. Congress guaranteed companies acquiring leases between 1996 and 2000 would have the unconditional right to produce a specified volume of oil and gas before being charged royalties.

The company claims that the MMS attempted to charge royalties on the leases, based on price thresholds, even though it has not yet surpassed the volume threshold.

Royalties from deepwater GoM leases have been widely disputed by the oil companies.

Some companies point to MMS rules for 1998 and 1999, which neglected to include price triggers that would require companies to pay royalties if oil and gas prices rose above a certain threshold, even though those triggers were included in leases issued in prior and later years.

A few companies holding 1998 and 1999 deep-water leases in the GoM have agreed to renegotiate these leases with the MMS. In January, the U.S. House of Representatives passed legislation calling for companies that do not renegotiate leases issued without price thresholds to include them or pay "conservation of resources" fees on those leases. If they do not, the companies would be barred from further leasing in the GoM. Meanwhile, the U.S. Senate is moving forward with legislation to offer a three-year extension to holders of these leases if the companies renegotiate them, and include a price threshold in their leases. Should the Senate pass legislation with this language, a joint House-Senate conference committee will try to compromise these significantly different pieces of legislation.

- Meridian Resource Corporation completed its evaluation of potential objectives at the "Deep Archtop" prospect in the Biloxi Marshlands area of St. Bernard Parish, and began marketing the prospect effort in mid-January 2007. Upon completion, Meridian began preparing the project engineering design for drilling and estimated costs. The project is designed to test a Jurassic Cotton Valley four-way closure on the leasehold. This 30,000 foot prospect reportedly has over 14,400 acres of closure, is imaged by 3-D seismic, and offers reserve potential of up to 5 trillion cubic feet of gas. The company will spend 2007 in pre-drill work, followed by 300-plus days to drill the well. The projected spud date is early second quarter 2008, with an estimated drilling cost of \$60 million. The shallow marshlands water location provides the potential for significant drilling cost savings and for any post-development infrastructure. Similarly sized offshore projects typically cost much more and require longer periods of time to construct the necessary pipelines and production facilities. Meridian owns production facilities and pipelines in the immediate area, and intends to retain and pay its share of approximately 20% working interest to the casing point in this well.

Paul Post

**When Mother Nature doesn't
back down.**



**We have experts
up to her challenge.**

While Mother Nature is a powerful force to reckon with as evidenced by Hurricanes Katrina and Rita, responding to extraordinary challenges is a way of life at Shell. And Charlie Williams, Chief Scientist and Engineer, is definitely up to the task. Under his lead, a record-setting 1000-ton rig lift and 2700 feet deep pipeline repairs for one of Shell's key oil production platforms in the Gulf of Mexico were safely completed ahead of schedule bringing much-needed supply back into production. Learn more about how Shell uses technology to secure energy by visiting shell.com/us/sepc0

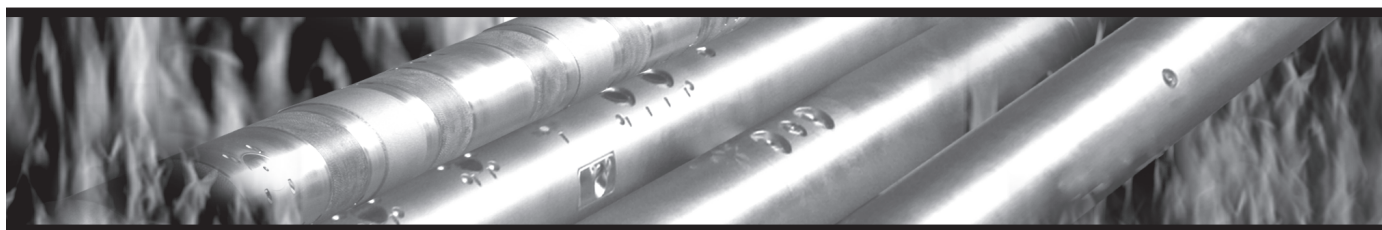


SURVIVOR™

LOGGING-WHILE-DRILLING SUITE

The SURVIVOR™ Suite uses our highly reliable HDS-1 Directional Gamma Ray technology, Array Wave Resistivity tool, Slim Density Neutron Standoff Caliper tool and our Dynamic Pressure Module to create a complete system for logging in hostile drilling environments.

Temperature Rating.....350°F (175°C)
Pressure Rating25,000 psi
Logging Capacity300+ circulating hours



RELIABILITY. ACCURACY. VERSATILITY. WE DELIVER.

e-mail: pfmarketing@pathfinderlwd.com

www.pathfinderlwd.com

© 2006 PathFinder Energy Services, Inc. All rights reserved.

PATHFINDER®

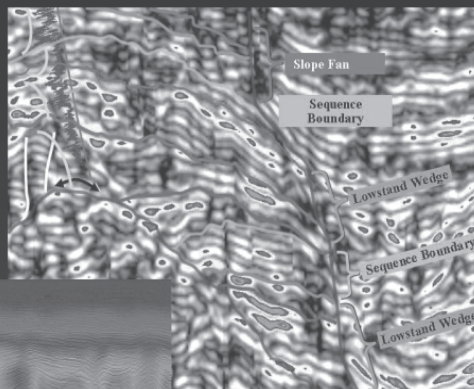
Fairfield *does more for you*



Acquisition

Z3000 Node System

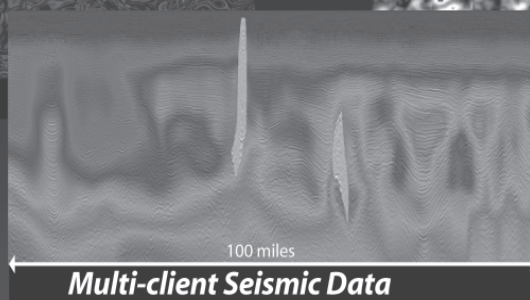
The latest and most advanced seismic system of its kind – the Z3000 Node System acquires data to 3000 meters of water depth.



Processing

SPICE

Fairfield's ongoing research and development efforts bring new technologies to the marketplace. For example, Fairfield's new SPICE technology shows critical structural and stratigraphic detail extracted from the seismic wavelet.



Prestack Depth Migration

This 100-mile crossline is an extraction from Fairfield's multi-client database.

The color velocity overlay, created from Fairfield's proprietary 3D tomographic, pre-stack depth migration velocity analysis, demonstrates the complexity of the geology.

Fairfield is the resource explorationists can depend on for the acquisition and processing of proprietary and multi-client data. For 30 years Fairfield's seismic knowledge and understanding has brought major advances to the seismic industry.



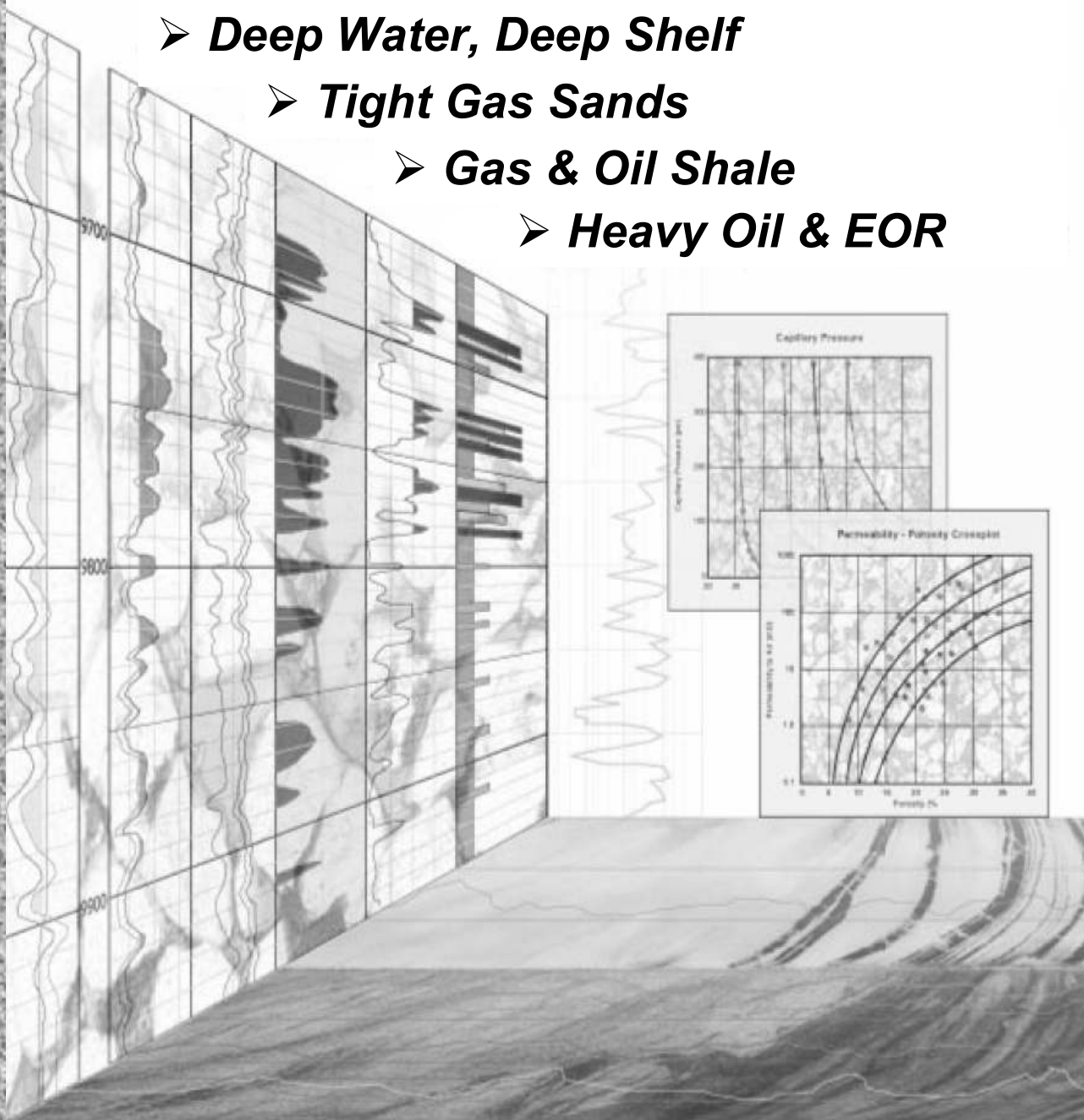
Houston (1) 281-275-7500
New Orleans (1) 504-525-6400
Denver (1) 303-716-1630

Jakarta (62) 21-5296-4565
Ho Chi Minh City (84) 8-556-6130
www.fairfield.com

ROCK-BASED PETROPHYSICAL SOLUTIONS

Core Lab offers a unique approach to petrophysical evaluations for even the most challenging reservoir.

- **Deep Water, Deep Shelf**
- **Tight Gas Sands**
- **Gas & Oil Shale**
- **Heavy Oil & EOR**



Pay Recognition

Core-Log Data Integration
Recommendations

Improved Reservoir Estimates Completion
Reservoir Performance Prediction

Answers From The Rocks

New Orleans (504) 733 6583

Houston (713) 328-2121

Lafayette (337) 837-8616

www.corelab.com

FRANK BLAND

1924 – 2007

The New Orleans area geological community was deeply saddened to learn that Francis Xavier Bland died at his retirement home in Memphis, Tennessee on March 7, 2007

Frank, “Fixbee”, whose career was entirely with Chevron, was a commanding and influential explorationist from the time he joined the company in 1951 until his retirement in 1985.

Frank was born in Lima, Ohio on November 15, 1924, moved to New York at an early age and graduated from Bayside High School on Long Island before joining the Marines in 1942. There, he had a distinguished career, participating in the invasions of Guadalcanal and Guam. After Guam, he was selected for officer training at Yale University where he continued as a civilian, graduating in 1949. Following this, he did graduate work at Kansas

University before joining Chevron (The California Company) in 1950. With Chevron, he headed up an Exploration District in Jackson where he was largely responsible for the discovery of Raleigh Field. In 1961, he transferred to New Orleans where he was District Geologist in the Delta District and influential in the discovery of Main Pass 41 Field. After his Delta assignment, he became the Central Exploration Division Manager and was active in the development of the deep Tuscaloosa Trend. It was his NOGS talk on the Tuscaloosa that scored the largest luncheon audience in NOGS history: 410. He co-authored, along with Larry Funkhouser and Curtis Humphris, the introductory article to the 1981 NOGS Tuscaloosa Trend volume.

With Chevron, Frank was a strong leader, an outstanding speaker and a trusted mentor, who always found time to help, instruct, and inspire employees of every degree of experience.

He retired from Chevron in 1985 and soon moved to Durango, Colorado where he was an active volunteer for the Colorado Division of Wildlife, participating in the annual banding of geese and salmon spawn, and providing tours at their museum.

Frank leaves Marg, his wife of 59 years, along with nine surviving children, ten grandchildren and four great grandchildren.

His buoyant personality and cheerful presence will be missed by all who knew him.

- Bob Branson, Duncan Goldthwaite and Curt Humphris

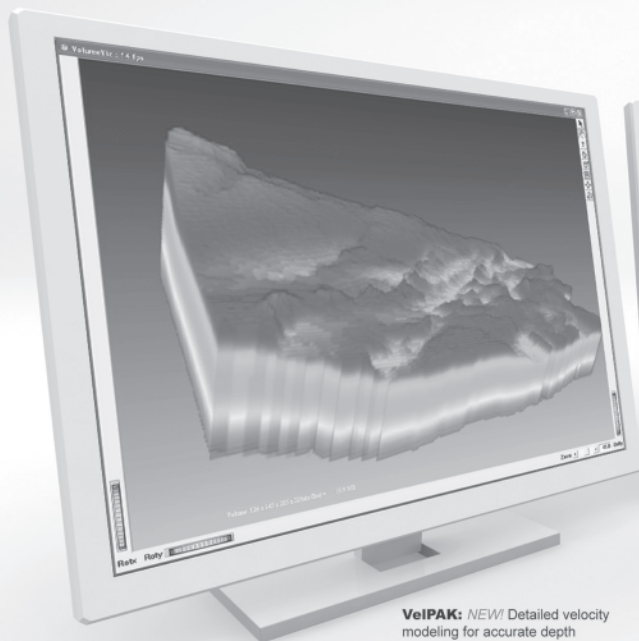


SMT Determining Local Support For a User's Group

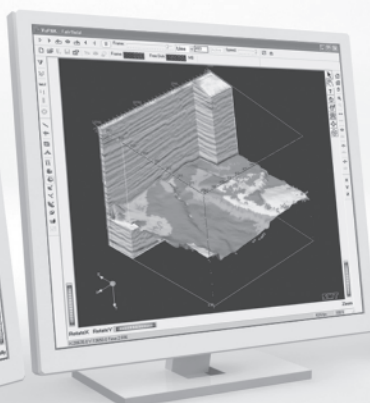
Seismic Micro-Technology, Inc. would like to resume the user's group meeting for the New Orleans Area. The meetings will take place at UNO's Lakefront campus. Please contact Mitch Luehr at (713) 464-6188, or email him at mluehr@seismicmicro.com to request a survey form to determine the best meeting time and frequency.

now available **version**

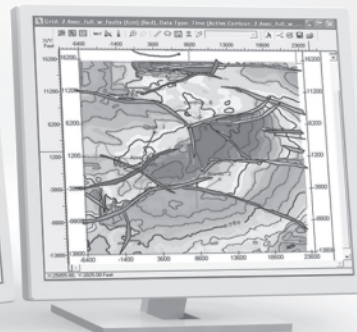
8.1



VelPAK: *NEW!* Detailed velocity modeling for accurate depth conversion.



AVOPAK/VuPAK: 3D view speaks volumes about your AVO anomalies.



2d/3dPAK: Afford yourself the flexibility of an integrated package whether you have 2D data or 3D data.

Have you reached your full potential?

Whether you are a geologist, geophysicist, engineer, or executive, success requires software that is fully integrated, flexible, and comprehensive. With KINGDOM, you can move easily in and out of components with only a single click of the mouse. In addition, all users have access to the same data set whether you are interpreting seismic data or deciding to drill. *(A network license gives you the ability to run simultaneous users, thus multiplying your productivity.)*

KINGDOM 8.1 offers two new products:

- VelPAK for velocity modeling and time-depth conversion
- LogPAK for automated quick-look log analysis

Other new features include:

- triangulate fault surfaces
- erase horizon or grid values within polygons

- display log signature maps
- digitize raster logs with the click of a mouse
- view AVO Gathers in VuPAK
- perform spectral decomposition in RSA

Reach your potential, call for your **KINGDOM 8.1 TODAY!**



Seismic Micro-Technology, Inc.
www.seismicmicro.com

E&P BASED. Software FOCUSED.

North America: +1 713 464 6188 Europe: +44 (0)20 8240 6524 Asia: +65 6220 1089

©2007 All Rights Reserved. Seismic Micro-technology, Inc.
VelPAK developed with Equipose Software.

THE NEW ORLEANS GEOLOGICAL SOCIETY MEMORIAL FOUNDATION, INC.

The Memorial Foundation is an IRS Tax Exempt Code #501 (c)(3) organization. The Federal I.D. is: 72-1220999. Please consider making your donation prior to the close of this year's fiscal cycle which is September 30, 2007. Your individual support in any amount will help meet the IRS Guidelines for our Foundation. *Thanks!*

\$15,000 AND ABOVE

Gibbett Hill Foundation

*In Memory of Steve & Marion Millendorf,
William J. Prutzman, Roger G. Vincent & Ron Youngblood*

\$8,000 TO \$9,000

GCAGS Matching Funds

\$3,000 TO \$4,000

Paul C. McWilliams

\$1,000 TO \$3,000

Olga Braunstein Succession

NOGS Golf Tournament May 2006

In Memory of Bill Craig

\$500 TO \$1,000

Dorothy N. Wise

In Memory of William H. Wise

\$250 TO \$499

Carlo C. Christina

In Memory of Al Gilreath

UP TO \$249

Robert J. Ardell

In Memory of Robert W. Sabate'

Al and Susie Baker

In Memory of Robert W. Sabate'

Hilary James Brook

Jack and Lucretia Bryant

In Memory of Robert W. Sabate'

Elisha A. Buckner

F. Robert Bussey

In Memory of Lee Meltzer

Chevron

Matching Funds

Clarence F. Conrad

Charley and Trudy Corona

In Memory of Robert W. Sabate'

M. R. "Bob" Douglass

Exxon Mobil Foundation Matching Funds

Michael N. Fein

Richard H. Fillon

Laurens Gaarenstroom

Peter G. Gray

In Memory of Robert W. Sabate'

Bernard L. Hill, Jr.

In Memory of Robert E. Osborne

Owen R. Hopkins

Dan E. Hudson

Thomas A. Hudson

Thomas Charles Klekamp

Richard G. Klibert

William J. Malin

Casey R. Mobley

New Orleans Geological Auxiliary

In Memory of June Philpott

Russell H. Nordwell

William J. O'Leary

Richard A. Olsen

In Memory of Robert W. Sabate'

Elizabeth M. Petro

Edward B. Picou Jr.

In Memory of Shelby W. Smith

Brenda E. Reilly

Edmund L. Russell

In Memory of Burt Shullaw

Monte C. Shalett

Robert C. Shoup

Rudolph B. Siegert

In Memory of Robert W. Sabate'

Dirk L. Smith

Dr. J. O. Snowden

Dave Sollenberger

In Memory of Des Utterback

Raymond O. Steinhoff

In Memory of Harold E. Vokes

Thomas A. Tucker

Roy C. Walther

William M. Whiting

Armour C. Winslow

In Memory of Rita Menzel Winslow

Frances A. Wiseman

In Memory of Steve Widdicombe

James W. Yeldell, Jr.

Jim Zotkiewicz

FONO FUND

The FONO Fund accepts contributions that are invested and the income dedicated to assure sufficient financial resources will always be available to maintain the NOGS business office. To date no funds from this account have been used. Contributors are reminded that donations to the FONO Fund are not covered by the IRS 501 (c)(3) tax exempt classification and should be reported as a business expense on your IRS tax report.

\$6,000 AND ABOVE

GCSSEPM Foundation

\$600

Willis E. Conatser

\$500

James A. Hartman

In Memory of Robert W. Sabate'

UP TO \$249

Alfred H. Baker Jr.

Joseph E. Boudreaux

Anthony Carollo Jr.

Arthur F. Christensen

Richard P. Colomes

Joffre J. Crouere

Michael A. Danahy

John Dombrowski

Merle J. Duplantis

Richard A. Edmund

Michael N. Fein

David Garner

Peter G. Gray

Stewart L. Henry

Bernard L. Hill, Jr.

Thomas A. Hudson

Thomas Charles Klekamp

Russell J. Landry

William J. Malin

Jeannie F. Mallick

George M. Markey, Jr.

Louis L. McCormick

Paul C. McWilliams

Robert G. Murphy

Richard A. Olsen

William S. Peirce

James P. Raymond, Jr.

Brenda E. Reilly

C. R. Rondeau

Monte C. Shalett

Rudolf B. Siegert

Dirk L. Smith

Raymond Stephens

H. Leighton Steward

Roy C. Walther

James W. Yeldell Jr.

Jim Zotkiewicz

CONTRIBUTIONS FOR BOTH FUNDS
THROUGH APRIL 10, 2007.
DONATIONS ARE LISTED FOR ONE YEAR.

In Memory of Bill Craig

Robin A. Broussard

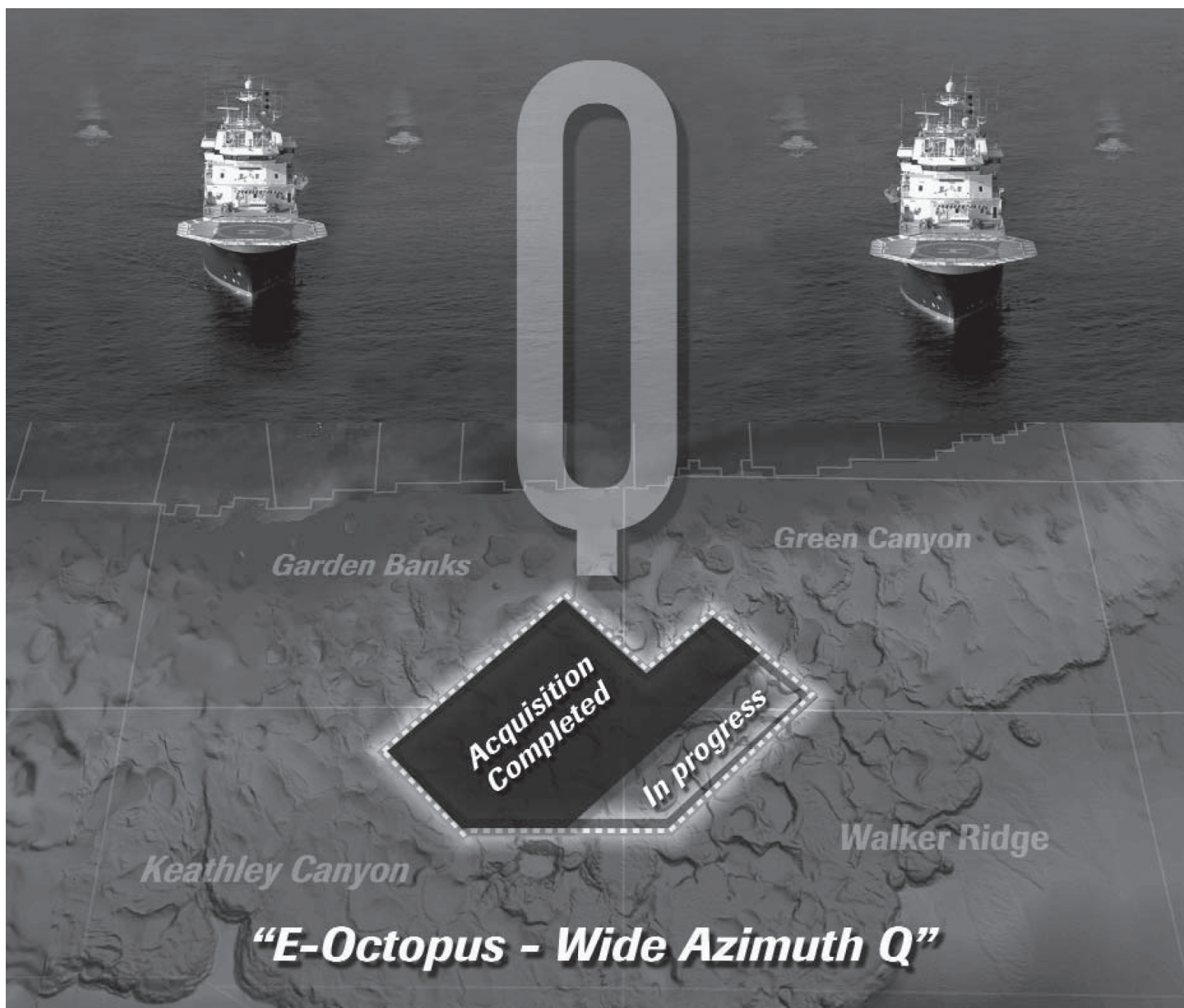
Chevron

Bernard L. Hill, Jr.

Jeff Jandegian

John C. Scheldt

Luncheon "Roundup" Donations



Elevate to a new level



We've **E**levated phase 2 of our E-Octopus WAZ survey using a radically new and **E**nhanced acquisition technique, complimented by Q-Marine higher signal-to-noise ratios and wider bandwidth that are so crucial in imaging subsalt.

To find out more about the changes that will deliver new data to your desk in advance of the next lease sale call 713-689-1000.

www.multiclient.westerngeco.com

Multiclient^E



Dominion Exploration & Production, Inc.

OFFSHORE BUSINESS UNIT
(Including South Louisiana)

1250 Poydras Street
New Orleans, LA 70113
Tel: 504-593-7000
Fax: 504-593-7665

www.dom.com

New Orleans | Houston | Oklahoma City | Calgary
Jane Lew, WV | Indiana, PA | Traverse City, MI | Roosevelt, UT



Collarini Energy Staffing Inc.

Full-Time and Temporary
Exploration and Production Personnel

Facilities · Drilling · Production · Reservoir Engineers
Landmen · Geoscience · Information Technology
Health and Safety · Management · Procurement
Accounting · Administrative Support

Houston and New Orleans
(832) 251-0553 · Fax (832) 251-0157
www.collarini.com

Connecting the Industry's Experts



Collarini Associates

4200 South I-10 Service Road, Suite 230
Metairie, Louisiana 70001
(504) 887-7127
(504) 887-7162

Reservoir Engineering
Oil & Gas Property Evaluation
3-D Seismic Interpretation
Integrated Field Studies

New Orleans • Houston
www.collarini.com

ATWATER CONSULTANTS, LTD.

REGISTERED AND CERTIFIED PETROLEUM PROFESSIONALS

GEOLOGICAL, ENGINEERING, GEOPHYSICAL,
TRAINING AND EXPERT WITNESS SERVICES

318 Camp Street
New Orleans, LA 70130

Tel. (504) 581-6527
Fax (504) 524-7798

MURPHY

EXPLORATION &
PRODUCTION
COMPANY - USA

131 SOUTH ROBERTSON STREET
NEW ORLEANS, LA 70161-1780

P.O. BOX 61780
(504) 561-2811



CIMAREX ENERGY CO.

GULF OF MEXICO REGION
GOM, SE La., N. La., MS, AL

1100 Poydras St.; Suite 1100

Keith Gourgues

New Orleans, Louisiana 70163

Region Manager

504-586-1815 / Fax 504-586-9035

NORTHCOAST OIL COMPANY

610 E. Rutland St.
Covington, LA 70433
(985) 898-3577
(985) 898-3585 FAX

Jack M. Thorson
Eric C. Broadbridge
J. Daryl Gambrell
Raymond W. Stephens

(832) 242-6000 (O)
(713) 917-0493 (O)

(504) 931-7506 (C)
johnjurasin@jurasinoilgas.com

JURASIN OIL & GAS

9700 Richmond Ave., Suite # 124
Houston, TX 77042-4821

JOHN M. JURASIN
President

Cert. Pet. Geologist #4284
Cert. Prof. Earth Scientist #1961



Shoreline Gas Inc.
www.shorelinegas.com
Full Service Natural Gas Marketing

ANSYTHE
Donald I. Andrews
504-887-3432



*Advertising space is
available for the NOGS
LOG - Please contact the
NOGS office for
information!*

BOO-KER OIL & GAS CORP.
Gray S. Parker

826 Union, Suite 300
New Orleans, LA 70112

Bus. (504) 581-2430
Fax (504) 566-4785

H. WARREN BELL
Oil and Gas Exploration

2500 Tanglewilde, Suite 485
Houston, TX 77063-2126

Bus (713) 266-7297
Fax (713) 266-7298

C & R EXPLORATION, INC.

Carlo C. Christina

Lawrence G. Ringham

R. W. BOEBEL
Petroleum Geologist

170 Broadway Street, Suite 321
New Orleans, LA 70118

(504) 866-4313

C. R. RONDEAU
Petroleum Geologist

119 W Southland Ave.
Ironwood, MI 49938

Res. (906) 932-4692

RAFIDI OIL AND GAS, INC.
Jaser N. Rafidi, President

4415 Shore Dr., Suite 202
Metairie, LA 70006

Bus. (504) 722-2942
Fax (504) 888-5539; Res. (504) 888-1661

CLASSEN EXPLORATION, INC.

James S. Classen
Looking for close in deals

P.O. Box 140637
Boise, ID 83714

classenllc@msn.com

Bus. (208) 854-1037
Fax (208) 854-1029

ROY C. WALTHER
Petroleum Geologist

2421 Prancer Street
New Orleans, LA 70131

Bus. (504) 392-8513
Res. (504) 392-9332

COLLES C. STOWELL
Oil and Gas Consultant

2288 Chisolm Trail
Salado, TX 76571

(254) 947-8977

RUDOLF B. SIEGERT
Petroleum Geologist

P.O. Box 2740, Slidell, LA 70459

(985) 641-4265

EDWARD B. PICOU, JR.
Consulting Micropaleontologist - Retired

228 St. Charles Ave., Suite 1330 C
New Orleans, LA 70130

Bus. (504) 529-5155
Res. (504) 282-3096

STONE ENERGY CORPORATION
James H. Stone, Chairman of the Board
David H. Welch, President & CEO

LL&E Tower, Suite 2650, 900 Poydras St.
New Orleans, LA 70112-4000

(504) 581-7766

D-O-R ENGINEERING, INC.
3-D and Geoscience Services

120 Oil Center Dr., Bldg. 12
P.O. Box 51707, Lafayette, LA 70505

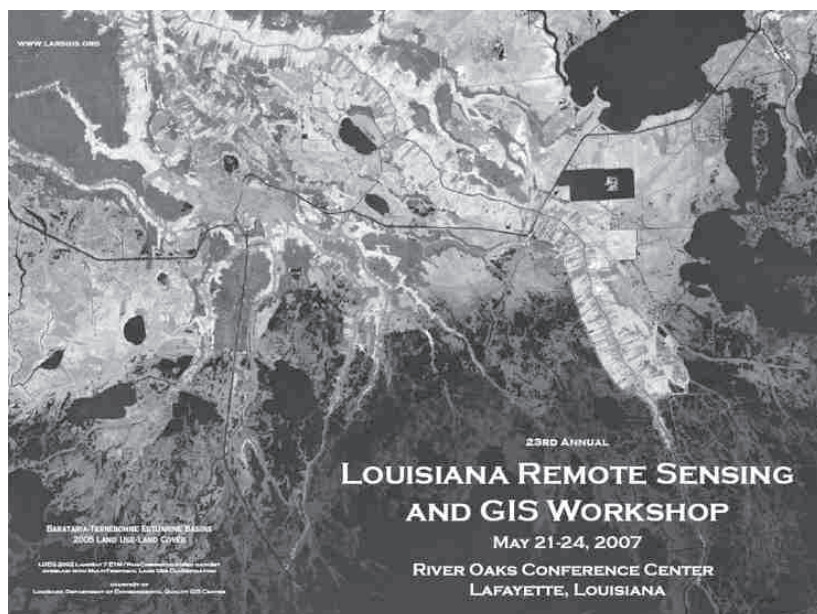
Bus. (337) 233-2378
Fax (337) 233-2907

TONY CAROLLO
Consulting Geologist

Unitization Geosteering Field Studies

1701 Peach Street
Metairie, LA 70001

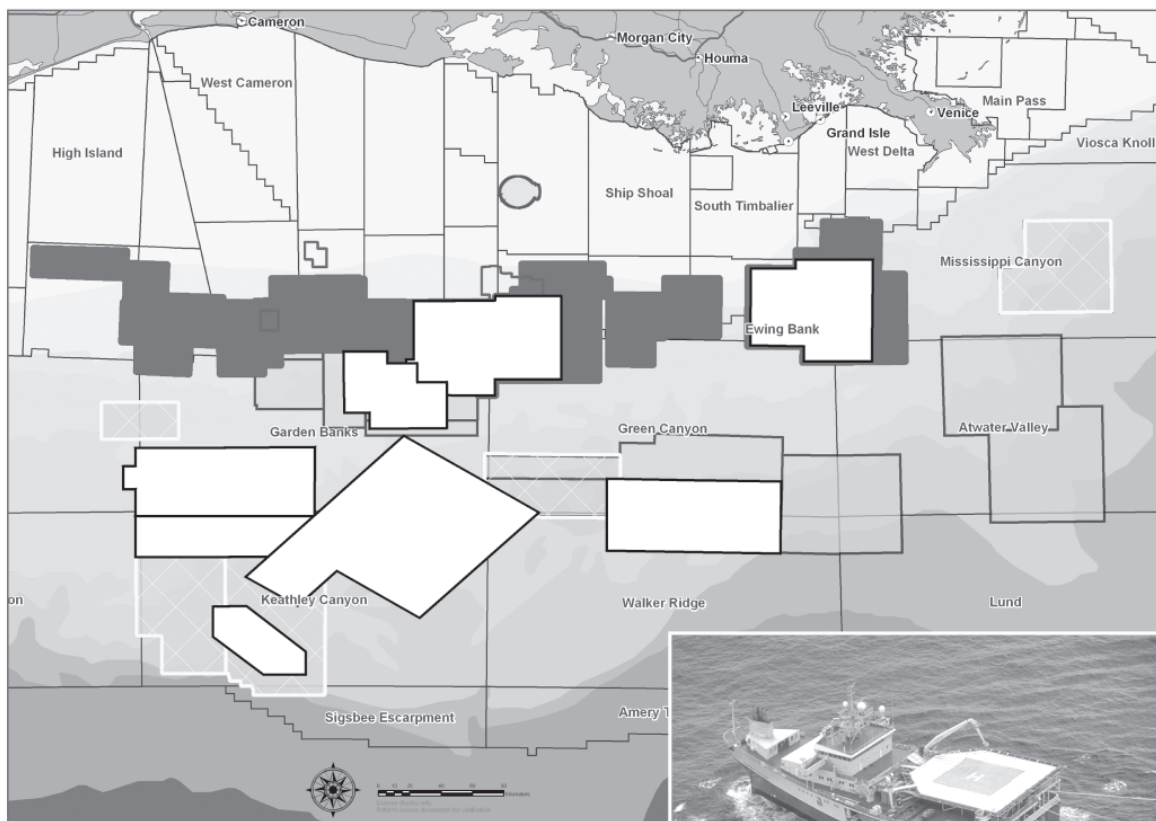
Bus. (504) 885-0004
Res. (504) 885-6829



For more information,
visit www.larsgis.org.

The Data You Need

PGS Gulf of Mexico Library



For more information email gominfo@pgs.com

3D Prestack Time and Depth Migration Projects:

- Flex Trend (FlexR) and deep water reprocessing projects
- True amplitude processing
- Bending ray Kirchhoff PSTM
- Turning wave Kirchhoff PSDM
- Wave equation PSDM



Map Legend

- PreSDM Full Volume
- PreSDM Grids
- PreSTM FlexR
- PGS_3D_4C
- PostSTM Streamer and Seafloor Seismic

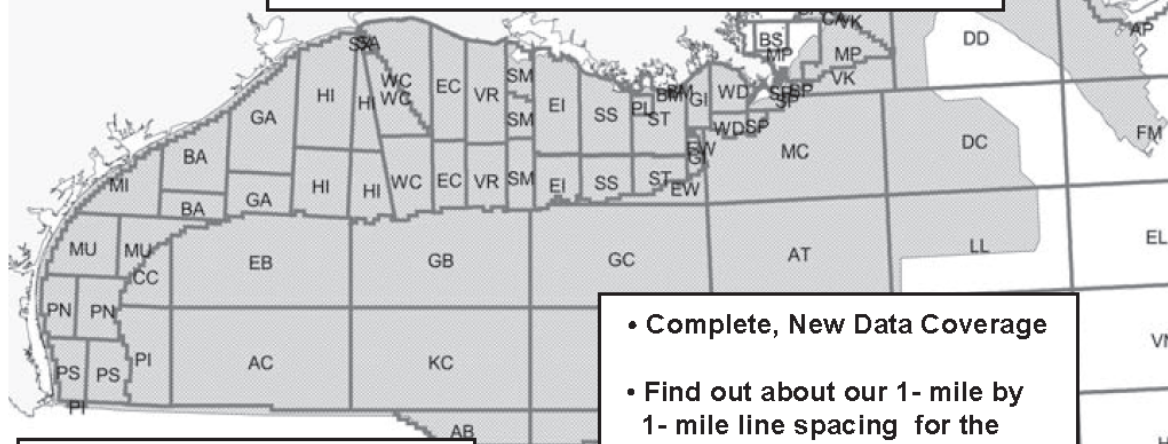
HOUSTON
 15150 Memorial Drive
 Houston, TX 77079
 Tel: 281-509-8000 / Fax: 281-509-8500

A Clearer Image
www.pgs.com





**"The Place to Go"
For GOM Gravity Data and Interpretations**



FUGRO ROBERTSON INC.
Contact: Dave Schwartz
Tel: (713) 369-6100
Fax: (713) 369-6110
Email: infofri@fugro.com
www.fugro-lct.com

- Complete, New Data Coverage
- Find out about our 1- mile by 1- mile line spacing for the entire deepwater
- PSDM Support
- 3D Modeling

**MARINE PROPERTIES, LLC
BERKSHIRE EXPLORATION CO.**
MONTE C. SHALETT, CPL, PRESIDENT
3030 Lausat Street BUS. (504) 831-7779
Metairie, LA 70001-5924 FAX. (504) 831-8315

PCI **Paleo Control, Inc.** Houston, Texas
713-849-0044

Drilling Wells, Studies and Data Base
Lloyd Tuttle Frio, SE Texas
Bob Liska Wilcox, S and SE Texas
Jim Thorpe Miocene and Cam-Miogyp

WWW.NOGS.ORG

NEW ORLEANS GEOLOGICAL SOCIETY



810 Union Street, Suite 300
New Orleans, LA 70112-1430

DATED MATERIAL