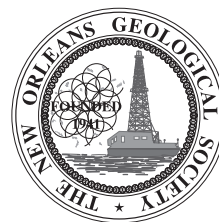


# NOGS LOG

WWW.NOGS.ORG



Official Publication of the New Orleans Geological Society, Inc.

July 2007

Volume 48, Number 1

## JULY AND AUGUST ACTIVITIES

### NOGS Events

#### July 9 - NOGS Luncheon

Ivor van Heerden, deputy director of the Louisiana State University Hurricane Center, and Author of "The Storm: What Went Wrong During Hurricane Katrina - The Inside Story From One Louisiana Scientist," will present "Hurricane Blues."

(See Page 7 for Abstract and Biography)

Note: As of July, luncheon costs will increase due to increased overhead associated with hotel charges. Please make note of the new luncheon costs.

#### LE PAVILLON HOTEL

Check with concierge or  
front desk for location  
Lunch served at 11:30am

#### ADMISSION:

with reservation ..... \$30.00  
without reservation ..... \$35.00  
Student Member with reservation ..... Free

#### July 20 - Geology Symposium for East and West Flood Protection Commissioners

Co-sponsored by NOGS and the Louisiana Geological Survey. Holy Cross College.  
9:30 a.m. - 3:00 p.m. See NOGS website for more details.

#### August 6 - NOGS Luncheon

Dr. Richard H. "Dick" Fillon, Senior Associate of Earth Studies Associates, will present "Paleogene Depositional Systems and Evolution of the Gulf of Mexico Basin Petroleum System."

#### August 16- 17 - Eleventh Annual Gulf of Mexico Deepwater Technical Symposium

Theme: New Challenges, New Solutions. New Orleans Hilton Riverside. Register at <http://spe-delta.org>. The symposium is a joint effort between SPE, NOGS and AADE.

#### FROM THE EDITOR

I am enthusiastic about taking over the reigns of the *NOGS Log* for 2007-08. I want to thank Robert Rooney for the excellent job he did the past year and for his help in the transition. Personally, I served as advertising committee chairman for nearly four years, and in the past year, I've gained a greater understanding and appreciation for the history of the *Log* while pulling together the Blast from NOGS Past column. With that foundation, my goal for the coming year is simple: continue to grow both the quality and quantity of *Log* content. To begin with, I hope to get some color back into the *Log* soon. We've had a lot of events over the past month or so, and the next couple of issues will feature photos from these. I welcome any and all feedback and promise to use any compliments, criticism, and/or suggestions to make the *Log* better.



Tim Piwowar  
Editor, *NOGS Log*



25 months and 30 days ago this well hit TD  
**TOMORROW MORNING YOU WILL  
KNOW WHAT THEY KNOW.**



### **GOM New Release Data**

Beginning August 1st, A2D Technologies will be the sole provider of Gulf of Mexico New Release digital LAS well log data resulting from its contract with the Minerals Management Service. Every well drilled in the Gulf of Mexico will be available immediately online the day it is released.

For more information, visit [www.a2d.com/newrelease/](http://www.a2d.com/newrelease/)



Your Well Log Data Marketplace

[www.a2d.com](http://www.a2d.com)



**NOGS Office**

Office Manager: Annette Hudson

Office Hours: 8:30am – 3:30pm on Monday-Wednesday-Friday

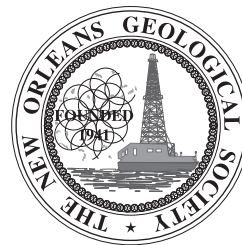
Tel: 504-561-8980 • Fax: 504-561-8988

E-mail: info@nogs.org • Website: www.nogs.org

The office is located at Suite 300, 810 Union Street, New Orleans, LA 70112.

Correspondence and all luncheon reservations should be sent to the above address.

Sent to press on June 22, 2007.

**BOARD OF DIRECTORS**

President	Arthur H. Johnson
Vice President	Robert Rooney
Secretary	Carol B. Rooney
Treasurer	J. David Cope
President-Elect	William M. Whiting
Editor	Timothy J. Piwowar
Director 2008	Alfred H. Baker, Jr.
Director 2009	Willis E. Conatser
Director 2010	Michael M. Ledet

**Company**

Hydrate Energy Int'l
CLK Energy
Consultant Geologist
Taylor Energy Co LLC
Consultant
Shell
Beacon Exploration, LLC

**Phone**

504-464-6208
504-529-6100
504-835-1909
504-589-0419
504-947-8495
504-728-4066
504-836-2710
504-469-2496
504-394-9636

**E-mail**

artjohnson51@hotmail.com
rrooney@clkenergy.com
carolbrooney@aol.com
dcope@taylorenergy.com
bootscon@aol.com
Tim.Piwowar@shell.com
abaker1006@aol.com
weconatser@aol.com
mikeledet@cox.net

**COMMITTEE**

AAPG Delegates
AAPG Student Chapter
AAPG Student Chapter
Advertising-Log
Awards
Ballot
Best Paper
Continuing Education
Employment Counseling
Entertainment
Environmental
External Affairs
Field Trip
Finance and Audit
Historical
Membership/Directory
New Geoscientists (NGNO)
Nominating
Non-Technical Education
Office Operations
Publications Sales
Photography
School Outreach
Scouting
Sponsorship-Houston
Sponsorship-New Orleans
Technical Projects
Ad Hoc Committee on
University Support

**Chairperson**

Thomas C. Bergeon
Bobby Cosentino
Bryan Rogers
Jennifer Connolly
Michael N. Fein
J. David Cope
David E. Reiter
Jeanne F. Phelps
Paul J. Post
Art Johnson
Daisy Pate
Michael A. Fogarty
David Garner
Reino F. Clark
Edward B. Picou, Jr.
Penne Rappold
TBA
Brenda E. Reilly
Duncan Goldthwaite
Michael N. Fein
Edward B. Picou, Jr.
George H. Rhoads
Thomas C. Bergeon
David Gillis
David G. Cole
Leslie Broussard
Jeanne F. Phelps
Michael J. Gallagher

Century Exploration
Tulane University
UNO
Shell
W & T Offshore
Taylor Energy Co LLC
Dominion E & P Inc.
Phelps Geoscience Serv.
MMS
Hydrate Energy
Eustis Geotechnical Eng.
Pennant Exploration
Shell
MMS
Consultant
Shell
Energy Partners Ltd
Consultant
W & T Offshore
Consultant
Chevron
Century Exploration
Schlumberger
Consultant
Diversified Well Logging
Phelps Geoscience Serv.
Dominion

504-832-3772
504-865-5198
504-736-2772
504-728-6411
504-210-8148
504-589-0419
985-893-8072
504-931-5651
504-736-2954
504-464-6208
504-613-5798
504-891-5400
504-728-6154
504-736-2711
504-529-5155
504-728-4338
504-799-4811
504-887-4377
504-831-4171
504-529-5155
504-592-6873
504-832-3772
504-592-5360
832-689-0411
504-352-4612
504-931-5651
504-593-7480

tom.bergeon@centuryx.com
rcosentino@tulane.edu
thgem@gmail.com
jennifer.connolly@shell.com
mikef@wtoffshore.net
dcope@taylorenergy.com
david_e_reiter@dom.com
jsfphelps@yahoo.com
paul.post@mms.gov
artjohnson51@hotmail.com
dpate@eustiseng.com
fogarty@airmail.net
david.garner@shell.com
reino.clark@mms.gov
epicou@bellsouth.net
prappold@gmail.com
breilly@eplweb.com
dglthwt@aol.com
lfeinmn1@cox.net
epicou@bellsouth.net
grhoads@Chevron.com
tom.bergeon@centuryx.com
gillis1@new-orleans.oilfield.slb.com
D.G.Cole@sbcglobal.net
sales@dwl-usa.com
jsfphelps@yahoo.com
Michael_J_Gallagher@dom.com

**NOGS LOG STAFF**

Editor	Timothy J. Piwowar
Editor-Elect	Michael D. Miner
Auxiliary	Arleen Falchhook
Calendar	Ryan M. Ott
Info Tidbits	Robert Rooney
Drill Bits	Paul J. Post
Webmaster	Jannette Sturm-Mexic

Shell
UNO
NOGA
Chevron
CLK Energy
MMS

504-728-4066
504-280-3866
504-885-3108
504-592-6803
504-529-6100
504-736-2954

Tim.Piwowar@shell.com
mminer@uno.edu
falchhook@aol.com
ottrm@Chevron.com
rrooney@clkenergy.com
paul.post@mms.gov
webmaster@nogs.org

**NOGS AUXILIARY****Officers**

President	Susie Baker
1st Vice-President	Linda Peirce
2nd Vice-President	Jean Jones
Secretary	Judy Lemarie'
Treasurer	Peggy Rogers
Parliamentarian	June Perret
Member-at-Large	Beverly Kastler

**Phone**

504-466-4483
504-393-7365
540-738-8091
504-393-8659
504-392-6323
504-881-9357
504-286-0879

**Directors**

Peggy Campbell
Ann Gilbert
Dolores Murphy
Carol Andrews
Alma Dunlap
Earleen Rodan

**Year**

2007
2007
2007
2008
2008
2008

**Phone**

504-283-2505
504-889-2104
504-393-0878
504-887-3432
504-737-2678
504-887-4370

--- NOGS Contact List continued on page 20 ---

see **clearly**

## At IHS, we believe “data quality” includes delivering it, just the way you want it.

**Data on demand**—Transactional or subscription, online or on your network—whatever your needs, you can access our data when, where and how you need it.

**Specialty applications** — Link & sync our well, production and log data with your interpretation and other software via IHS Enerdeq™ or, load 27 U.S. spatial layers into ESRI tools for geo-spatial mapping.

**One-button exports** — To the application of your choice, after you've honed your area-of-interest with Enerdeq's browse, map & query tools.

Whether you're powered by your laptop or your corporate E&P portal, if you're plugged in, you can access the industry's best data. With Enerdeq, our flexible data integration platform, we can tailor data access & delivery to your exact needs, from activity alerts to spatial data mining. You choose the place—office, coffee house or boardroom.

See for yourself. Visit [ihs.com/energy/bestdata](http://ihs.com/energy/bestdata) for a demo of Enerdeq, or to browse and order well, production and log data for your area of interest.

See further. See opportunity. See clearly.







## *from the President*

Greetings Fellow NOGS Members,

With this column I begin my year as President of our society. I am grateful for this opportunity to lead NOGS, and especially appreciative of Mike Fein's leadership over the past year. It has been amazing to watch Mike in action, working hard and having fun at the same time – he is very much a tough act to follow.

The 2006-2007 board and committee chairs were excellent, as seen by the growth in membership and participation. The new officers are now off to a great start, with President-Elect/Entertainment Chairman Bill Whiting planning a very creative kick-off party for September and already getting the Christmas party organized for December. Vice President Robert Rooney is lining up luncheon speakers and Tim Piwowar is off to a fast start with the LOG.

I have appreciated the many calls from NOGS Past Presidents, offering encouragement and sharing ideas. Something I heard a lot was that I needed a “theme” for the year. This posed a bit of a problem, as I want to continue all of the great things NOGS has been doing well: great luncheon meetings, informative NOGS LOG articles, valuable continuing education courses, scholarships, and fun social events. There is, however, one area where I believe we need to grow; and that is in our outreach efforts.

Outreach can take many forms, and there are opportunities for NOGS members to play a part in this:

- **Outreach to the Geological Community of the Gulf Coast.** Plans have begun for a new volume of “Louisiana Oil & Gas Fields”. It has been 19 years since Volume III was published and I'm sure there will be a solid market for a new volume. Tom Bergeon is heading up this effort, but we will need a lot of participation from our members to make it successful. We will improve the NOGS website so that its value to our members and on-line visitors is strengthened. We are also making plans for additional field trips in Southeast Louisiana.

- **Outreach to Schools.** We are off to a good start with our involvement with UNO and have many opportunities to expand those efforts and results. In addition, I have spoken with a number of K-12 teachers and principals who would welcome geologists who could make classroom presentations. NOGS has a great collection of rocks and fossils, and those of us who have made school visits can attest to the value this has for the students. (It's also a lot of fun.) We are working to put together guideline “scripts” so that anyone interested can participate more easily.

- **Outreach to Community Leaders.** The levee failures and their aftermath demonstrated that the importance of subsurface geology was seriously overlooked by the organizations authorized to protect our communities from storms. Sharing our knowledge and sponsoring symposia are an important component of our outreach. As a first step, NOGS is co-sponsoring a one-day public symposium focused on geologic problems regarding flood protection. The symposium will be presented at Holy Cross beginning at 9:30 A.M. This event is being held during a meeting of the East and West Flood Protection Commissioners.

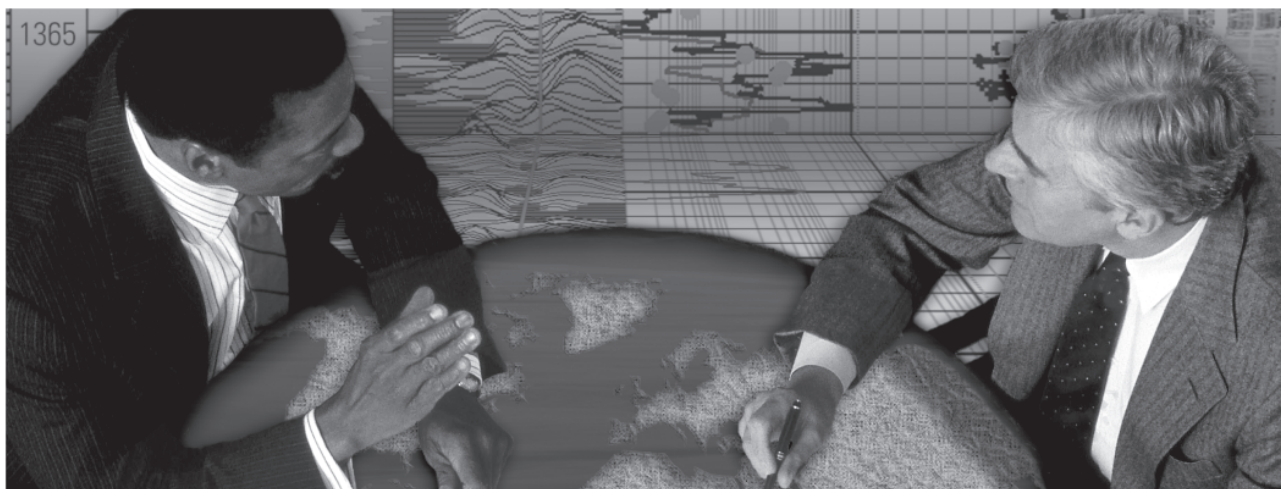
- **Outreach to the Community.** I was pleased by the turnout at our City Park clean-up in May, an activity that we leveraged with SGS. There will be many other events that will benefit from being joint NOGS/SGS functions and we will make the most of our joint efforts. Between those who came out that Saturday, those who wanted to be there but had other plans, and those donated money to the cause, it is quite clear that community involvement is something that matters to our members. We will expand these efforts in the coming year.

NOGS is in great shape and this year will see us continuing to provide our members with the services they have always valued. In addition, we will reach out in many new ways that will require greater involvement from our members. Please help us achieve our goals.

I have learned a lot from listening to the Past Presidents and NOGS board members. I would also like to hear from all members on how we strengthen our society and maintain its value for all of our members.

*Art Johnson*

**Schlumberger formation evaluation solutions deliver the answers you need.** Our extensive portfolio of services, leading-edge technology, and advanced conveyance options keep you in communication with your well throughout its life cycle.



*With formation evaluation technologies from Schlumberger, you can make the best decisions for optimized performance in every well.*

## **The formation evaluation one-stop shop**

Whether you are logging in open hole or behind the casing, our broad selection of services ensures the best solution for acquiring formation evaluation data. Tools can be conveyed while drilling or on wireline or pipe. We offer many specialized evaluation capabilities, from density, neutron porosity, and resistivity to borehole imaging, nuclear magnetic resonance logging, borehole seismic, formation pressure testing, and fluid sampling. Advanced triple-combo logging options include the VISION\* formation evaluation and imaging-while-drilling services. Coupled with Pulse\* telemetry and surveying services, the VISION family provides real-time formation evaluation data and enables optimum well placement.

High-speed wireline measurements are recorded with the Platform Express\* logging services. The SlimXtreme\* platform is designed for high-pressure, high-temperature environments and the ABC\* Analysis Behind Casing services are used after casing is set.

Expert interpretation from the engineers and geoscientists of Schlumberger Data & Consulting Services brings all your data together to give you the answers you need. This expertise is available after logging is complete or as real-time two-way wellsite communication through the InterACT\* real-time monitoring and data delivery system.

Schlumberger delivers leading-edge technology and interpretation expertise for all your formation evaluation needs, so every well benefits from the very best information.

**For more information visit**  
**[www.slb.com/oilfield/formation\\_evaluation/](http://www.slb.com/oilfield/formation_evaluation/)**

\*Mark of Schlumberger

04-FE-114

# Schlumberger



# July 9 Luncheon Presentation

## Hurricane Blues

presented by

**Dr. Ivor van Heerden**

**Deputy Director of the LSU Hurricane Center**

### ABSTRACT

This presentation will document events leading up to the hurricane Katrina catastrophe and how pertinent science was ignored. It will track the history of hurricane protection in the area as well as the nature and mechanisms of levee failures during Katrina. Thereafter, we will look at the question of "How safe is it?" followed by aspects of a plan that would ensure the continued habitation of southeast Louisiana. The presentation ends with a series of recommendations developed as part of the "Team Louisiana" forensic investigations on how to

proceed from here forwards. These recommendations include potential congressional actions as well as a discussion of enforcing existing laws. Attendees will hopefully be better informed as to the hurricane surge realities of Louisiana, but at the same time recognize that through coastal restoration and engineered protection, coastal Louisiana can continue to thrive and become a leader in new coastal technologies, which will be in demand as global warming speeds sea level rise into the future.

### BIOGRAPHY

**Dr. Ivor van Heerden** has been deputy director of the Louisiana State University Hurricane Center since 1999 and director of the Center for the Study of Public Health Impacts of Hurricanes, a Louisiana Board of Regents Health Excellence Fund Center, since 2001. He is a faculty member of the Department of Civil and Environmental Engineering. A native of South Africa, he received his undergraduate degree in geology from the University of Natal in South Africa, and his masters and doctorate in Marine Sciences from Louisiana State University. He is a former Assistant Secretary of the Louisiana Department of Natural Resources where he ran a very successful coastal wetlands restoration program. Ivor has been involved in natural disaster research projects

in various parts of the world and played a key part in the dissemination of information on the impacts of Katrina during the emergency. Presently he is leading the State of Louisiana's official forensic data gathering team as concerns the failure of the levees in New Orleans and the consequences for those who lost their homes. He has undertaken thousands of interviews and appeared in Spike Lee's HBO Katrina documentary as well as in documentaries done by amongst others; NOVA-PBS, History Channel, Discovery Channel, National Geographic and BBC. He is the author of *"The Storm - What Went Wrong and Why during Hurricane Katrina - the Inside Story from One Louisiana Scientist"* (with Mike Bryan) published by Penguin/Viking.

**THE LUNCHEON RESERVATION DEADLINE IS JULY 5, SO CALL THE NOGS OFFICE - TODAY!**

### "And Looking Ahead..."

The next luncheon will be August 6. Dr. Richard H. "Dick" Fillon, Senior Associate of Earth Studies Associates, will present "Paleogene Depositional Systems and Evolution of the Gulf of Mexico Basin Petroleum System." Contact the NOGS office at 561-8980 or use the e-link on the NOGS website ([www.nogs.org](http://www.nogs.org)) to make your reservation.

**Look for  
Technomania  
recap in next month's  
NOGS LOG**

**Introducing the**  
**2007-08**  
**NOGS**  
**Board of Directors**



**Art Johnson - President**



**Robert Rooney - Vice President**



**Carol Rooney - Secretary**



**David Cope - Treasurer**



**Tim Piwowar - Editor**



**Bill Whiting - President-Elect**



**Al Baker - Director**



**Will Conatser - Director**



**Mike Ledet - Director**



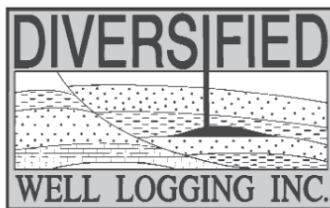
**Michael Miner - Editor-Elect**





## Relax. We'll keep you posted.

Your rig is offshore and you are not. How do you know what's going on so many miles away? You know because we tell you. Daily or even hourly, Diversified Well Logging's engineers update you on the status of your rig. We are your eyes and ears, especially when it comes to deep water or high pressure, high temperature areas. Diversified offers 24-hour surface evaluation. We provide secure and customized real-time data communication, in-house research and development and 24/7 on-call support for our equipment and our engineers. Whether you have a 10-day job or 110-day job, we provide the specialized attention you require. So, relax. We're with you every step of the way.



*Serving the Gulf Coast for over 40 years.*

New Orleans • Lafayette • Houston • Dallas • Corpus

800.280.2096

711 West 10th Street • Reserve, LA 70084 • Phone: 985.536.4143 • Fax: 985.536.2427  
sales@dwl-usa.com

*Precise Data.*

*"Click"*

*Unlock the Potential of Your Reservoir.*

Today's reservoirs are more challenging than ever. To unlock their potential requires absolutely precise data. OMNI Laboratories has established higher standards, more thorough protocols, and meticulous quality control measures to ensure unsurpassed accuracy. Plus, we have assembled the finest scientists in the field to provide superior interpretation and analysis. When precise data is paramount, choose OMNI Laboratories.

*At OMNI, We've Got the Answers.*



13 LOCATIONS IN THE U.S., CANADA AND SOUTH AMERICA • HEADQUARTERS: HOUSTON, TX • 832-237-4000 • [WWW.OMNILABS.COM](http://WWW.OMNILABS.COM)



# New Orleans Geological Auxiliary News

On behalf of the New Orleans Geological Auxiliary, we offer our thanks and love to Carol Andrews, not only for who she is, but also, her photographic ability! On the following pages are just a sampling of the pictures she has taken from our events over this past year.

The September Coffee at the home of Ruthie Grimes was a perfect beginning to start off the 2006 year. On a beautiful crisp November day, we enjoyed a tour, along with lunch at Houma's House. Our next event was in February, as our Northshore trek took us to Longbranch with Ann Dale as our Guest Speaker. NOGA experienced the generous hospitality of Ann and Louis Gilbert as they shared their home for our Spring Social. Finally, our Installation Luncheon at Chateau Du Lac, a great French meal and as lagniappe, door prizes! Many heartfelt thanks and appreciation to all the Ladies who gave of their time, talents and homes in making this past year memorable.

The Planning Committee has arranged for some exciting events for the upcoming year, which will be noted in the next NOGS LOG. I would encourage any spouse who is not a member of NOGA to please join us, it would be our privilege to meet you.

I would like to thank our new "Lois Lane" - Arleen Falchook, who has graciously agreed (without any "arm-twisting") to write the NOGA Column this upcoming year.

With regret, we are having to say "Good-Bye" to Mim Brumbaugh and Jean Wood. Both members will be moving to Florida and Houston (respectively). We thank them for their years of loyalty and service to NOGA and will miss them more than they know...

In closing, our sincere condolences to Judy Sabate, Susan Danielson and Jean Jones on the loss of their husbands. We extend our hearts, prayers and love to these dear friends and fellow NOGA Members.

Thanks again to the NOGA Board for continuing on for the next year!!!!

Fondly,  
Susie Baker  
NOGA President

## *NOGA Application Form*

*Dues: \$15.00*

*Name* \_\_\_\_\_

*Home Address* \_\_\_\_\_

*Home phone* \_\_\_\_\_

*Husband's Name* \_\_\_\_\_

*Husband's Company* \_\_\_\_\_

*Please make check payable to New Orleans Geological Auxiliary and  
mail with application to: Peggy Rogers  
2580 Valentine Ct  
New Orleans LA 70131*

# NEW ORLEANS GEOLOGICAL AUXILIARY

## 2006-2007 PROGRAMS



Luncheon at Home of Ruth Grimes



Houmas House Plantation Luncheon & Tour

Committee - Alma Dunlap & Beverly Christina



Longbranch Restaurant Luncheon

Mary Walther, Chairman with Speaker, Anne Dale &  
Committee, Amber Klekamp & Trez Zotkiewicz



Spring Social at Home of Ann & Louis Gilbert

Ann & Louis Gilbert with Committee Members,  
Carol Andrews, Jean Jones & June Perret



## Past President's Luncheon



Past Presidents: (Back Row) Joan Sylvester, Carol Andrews, Ruth Grimes, Judy Lemarie, Earleen Rodan, Pat Williamson, Joan Collier, Mary Petrocco, Mary Walther. (Front Row) June Perret, Susie Bajer, Beverly Kastler, Judy Sabate, Ruth Ingram.



Chateau du Lac Installation Luncheon

Committee - Dolores Murphy & Judy Lemarie



Outstanding Service Award Recipient, Linda Pierce and Loyalty Award Recipient, Mary Walther with President, Susie Baker



2006-2007 Board Members

(Back Row:) Peggy Campbell, Linda Pierce, Judy Lemarie, Jean Jones, Dolores Murphy, June Perret, Ann Gilbert, Alma Dunlap. (Front Row:) Peggy Rogers, Beverly Kastler, Susie Baker, Earleen Rodan, Carol Andrews.



## A Different Kind of Field Work

For NOGS and SGS members looking to help our community recover from Katrina, the chance to spend a day working in New Orleans City Park was a great opportunity. On May 19, seventeen society members and family spent a great day clearing brush along the lagoon across from the softball center and hauling trash. Over ¼ mile of the waterfront was cleared and as the before and after pictures show, we made a real difference.

Along with our call for volunteers, we requested financial support and our members came through with over \$1100. In addition NOGS and SGS each contributed an additional \$250.



The final result!

The project came up on fairly short notice and many members could not participate because of prior commitments. There are additional opportunities to help City Park's recovery for anyone interested. NOGS and SGS are making plans to help set up the lighting for Celebration in the Oaks sometime in November. In addition, City Park has a "Super Saturday" work day, usually the first Saturday each month. If you would like to participate, volunteers are invited to meet at the tennis center parking lot (across from the Peristyle next to the gray doublewide trailer) at 9:00 a.m. Work assignments and tools will be handed out at that time and volunteers will work until 12:00 noon.

There are many other great opportunities for helping with the recovery of our community, including Habitat for Humanity and numerous church groups. I hope all NOGS members will find some time in their busy schedules to volunteer.

### *Art Johnson*



Getting instructions

Bridge, before (above) and after (right)





Lagoon, before (right) and  
after (below)



Break time



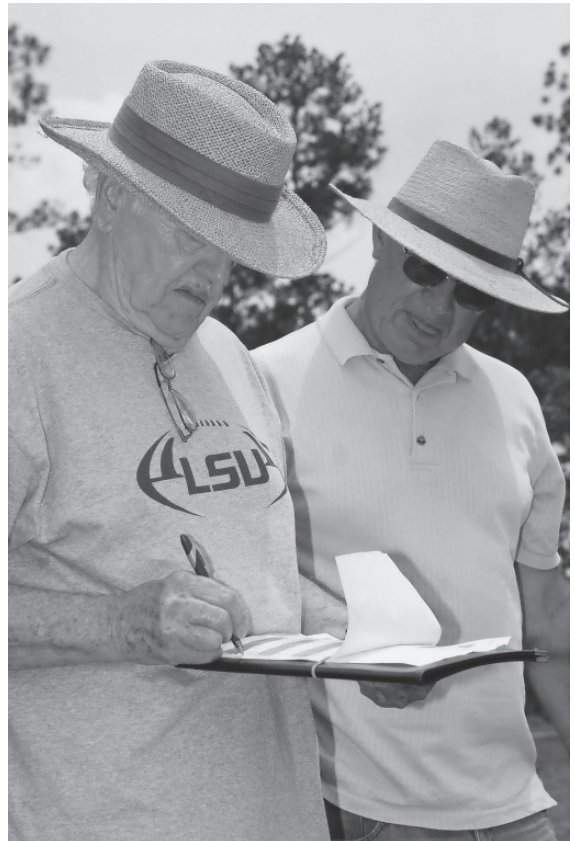
Hard at work





# NOGS 2007 Golf Outing















# PALEO DATA

▼ *Integrated foraminifera and nannofossil  
biostratigraphic services*

▼ *Regional paleo databases*

▼ *Regional biofacies and isopach maps*

▼ *Comprehensive Gulf Basin  
Deposystem data/map project*

▼ *Well-site services*

Arthur S. Waterman  
Norman S. Vallette  
Michael W. Center  
Albert F. Porter, Jr.  
Thomas M. Reilly  
Richard A. George  
Ryan D. Weber  
Ann Hare  
Donna Lacoste  
Rhonda Roederer

6619 Fleur de Lis Drive  
New Orleans, LA 70124  
(504) 488-3711

[www.paleodata.com](http://www.paleodata.com)

## MCMORAN EXPLORATION CO.



## McMoRAN OIL & GAS

[www.mcmoran.com](http://www.mcmoran.com)  
NYSE: MMR

1615 Poydras  
New Orleans, LA 70112  
(504) 582-4000  
Fax: (504) 582-4155

P.O. Box 60004  
New Orleans, LA 70160

## NOGS CONTACT LIST

--- continued from page 3 ---

### MEMORIAL FOUNDATION

#### BOARD OF TRUSTEES

2007-08 Chairman	Michael N. Fein
2007-08 Secretary	Arthur H. Johnson
2007-08 Trustee	Doug Cristina
2007-08 Trustee	George T. Froming
2008-09 Trustee	David E. Balcer
2008-09 Trustee	Tom Klekamp
2009-10 Trustee	TBA
2009-10 Trustee	TBA

#### Company

W & T Offshore  
Hydrate Energy Int'l  
Consultant  
Consultant  
Chevron  
Amber Resources LLC

#### Phone

504-210-8148  
504-464-6208  
985 630-5621  
504-799-1918  
504-592-6752  
985-845-4046

#### E-mail

mikef@wtoffshore.com  
artjohnson51@hotmail.com  
dcristina@charter.net  
gfroming@eplweb.com  
dbalcer@chevrontexaco.com  
klekamp@bellsouth.net

### AAPG DELEGATES

#### Term Ends

2007	Thomas C. Bergeon	Century Exploration	504-832-3772	tom.bergeon@centuryx.com
2007(a)	J. Stephen Tissue	Chevron	504-592-6030	stevetissue@Chevron.com
2008	Irion Bordelon, Jr.	Cimarex Energy	504-586-3023	lbordelon@cimarex.com
2008	Carol Rooney	Consultant Geologist	504-835-1909	
2008(a)	James Cearley III	Chevron	832-854-2655	james.cearley@chevron.com
2008(a)	Arthur T. Cerniglia	CIG Exploration	504-780-0097	cigexploration@yahoo.com
2009	David E. Balcer	Chevron	504-592-6725	dbalcer@Chevron.com
2009	William Whiting	Consultant	504-947-8495	bootscon@aol.com
2009(a)	Nancye Dawers	Tulane University	504-862-3200	ndawers@tulane.edu
2009(a)	David Cooke	MMS	504-736-2609	david.cooke@mms.gov



## NOGS Membership News & Information

*This is your page. We would like to fill it with your news. In addition to professional news from our members; e.g., promotions, transfers, moves, new employer, etc., we also welcome your success stories. Please e-mail items to [log@nogs.org](mailto:log@nogs.org).*

### New NOGS Members May 2007

**Taylor Butterworth**  
LLOG Exploration  
Geologist  
Ste 220, 103 Northpark Blvd  
Covington, LA 70433  
985-801-4300

**Katie J. Howell**  
Dominion E & P Inc  
Associate Geologist  
Ste 2000, 250 Poydras St  
New Orleans, LA 70113

REINSTATED

**John R. Breen**  
W & T Offshore  
Ste 1200, 3900 N Causeway Blvd  
Metairie, LA 70002  
504-210-8178

REINSTATED

**Steve Sabrier**  
Century Exploration Co  
Geophysicist  
Ste 2800, 3838 N Causeway Blvd  
Metairie, LA 70002  
504-832-3762

REINSTATED

**Rudy Wilhelm**  
Shell Deepwater Devel., Inc.  
701 Poydras St  
New Orleans, LA 70161  
504-728-7668

### SMT Users Group Meetings to be Held on UNO Campus

SMT will have the Gulf Coast Users Group (GCUG) meetings on the second Wednesday of the month. They will occur every other month (2 months) and the first one will be on July 11th, 2007. The time will be from 11:30 AM to 1:00 PM and will be held at the University of New Orleans (UNO), Geology Department. Please contact Mitch Luehr at (713) 464-6188, or email him at [mluehr@seismicmicro.com](mailto:mluehr@seismicmicro.com) if you wish to attend.



# SURVIVOR™

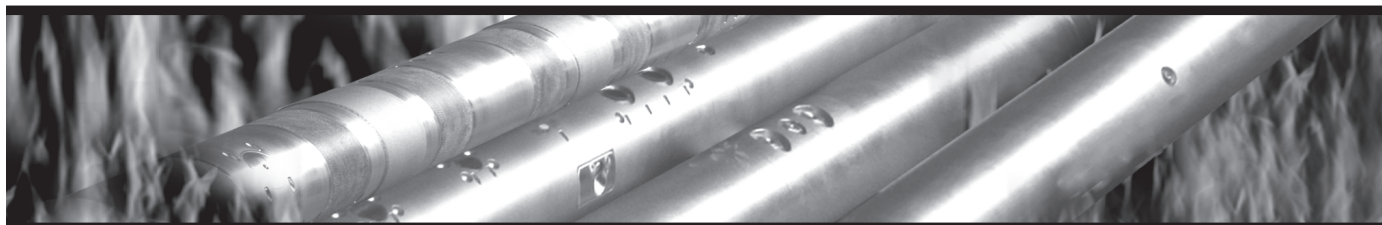
## LOGGING-WHILE-DRILLING SUITE

**The SURVIVOR™ Suite uses our highly reliable HDS-1 Directional Gamma Ray technology, Array Wave Resistivity tool, Slim Density Neutron Standoff Caliper tool and our Dynamic Pressure Module to create a complete system for logging in hostile drilling environments.**

**Temperature Rating.....350°F (175°C)**

**Pressure Rating .....25,000 psi**

**Logging Capacity .....300+ circulating hours**



**RELIABILITY. ACCURACY. VERSATILITY. WE DELIVER.**

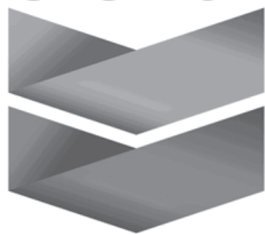
e-mail: [pfmarketing@pathfinderlwd.com](mailto:pfmarketing@pathfinderlwd.com)

[www.pathfinderlwd.com](http://www.pathfinderlwd.com)

© 2006 PathFinder Energy Services, Inc. All rights reserved.

# PATHFINDER®

## Chevron



**935 Gravier Street  
New Orleans, LA 70112**

**(504) 592-6000**

*"Serving the Oil & Gas Industry Since 1983"*

Geological,  
Geophysical &  
Land Drafting

Anthony Catalanotto

*President*

Stefani Kelone

*Drafting and Design*



## Geo-Draft, Inc.

*A Professional Drafting & Graphics Firm*

3349 Ridgelake Drive • Suite 202 • Metairie, LA • 70002

Office: (504) 836-2882 Fax: (504) 836-2877

[geodraft@bellsouth.net](mailto:geodraft@bellsouth.net)

## CLK ENERGY, LLC

**Oil & Gas Exploration and Production**

**1615 Poydras Street  
Suite 1300  
New Orleans, LA 70112**

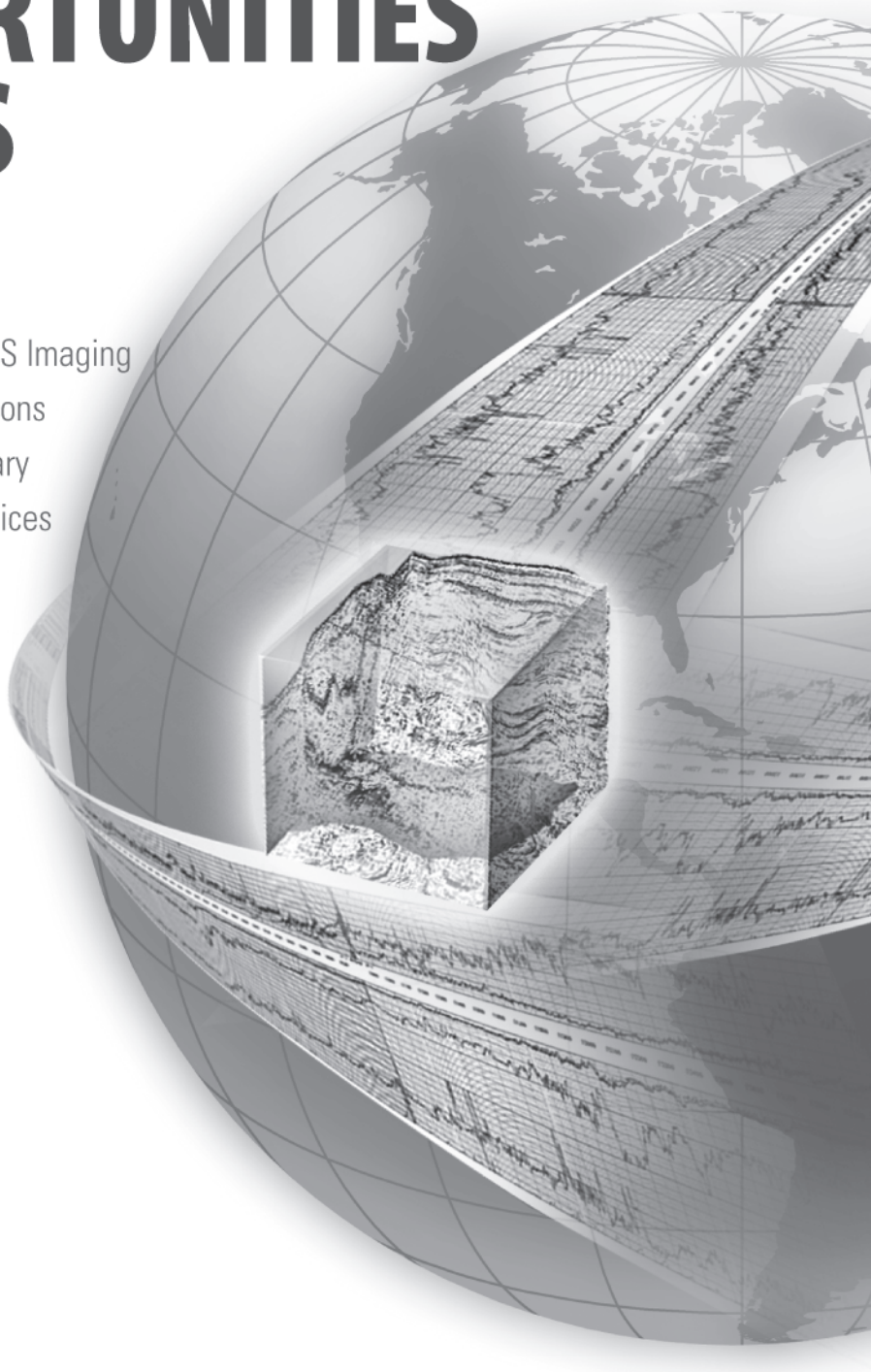
**(504) 529-6100  
(504) 596-2021 [Fax]  
[www.clkenergy.com](http://www.clkenergy.com)**

**el paso** | Production

1001 Louisiana  
Room S W 2205 A  
Houston, Texas 77002  
Office: (713) 420-2600  
Fax: (713) 420-1643

# EXPLORE A WORLD OF OPPORTUNITIES WITH TGS

- Non-Exclusive Seismic Surveys
- Seismic Data Acquisition
- Seismic Data Processing via TGS Imaging
- Integrated Regional Interpretations
- Well Log Data via A2D Subsidiary
- Gravity / Magnetic Data & Services



Seismic



Well Log



Integrated Products



TGS Imaging

[www.world-class-data.com](http://www.world-class-data.com)

TGS-NOPEC Geophysical Company • [www.tgsnopec.com](http://www.tgsnopec.com) • NORWAY +47 31 29 20 00 • USA +1 713 860 2100 • UK +44 (0) 1234 272122 • AUSTRALIA +61 8 9480 0000

## South Louisiana and Offshore Exploration and Production Activity

- **Total** and **Shell** are having issues over the subsea infrastructure for Shell's planned Perdido Regional Host, a spar project in ~8,000 feet of water with the facility located in AC 857. Total argues the project adversely affects the economics of its development scheme for the nearby Gotcha oil discovery in AC 856. Total claims that Shell's proposed locations for pipelines and anchors to moor its planned Perdido facility will cross into its west-adjacent lease. Total argues that, if the situation stands, Shell's mooring spread and pipelines will block access to the site where Total is evaluating plans to drill development wells and eventually moor its own production facility.

The Perdido Host is a regional DVA (direct vertical access) spar that will be the deepest spar production facility in the world. First production is anticipated in 2010. It will be a common processing hub near the Great White discovery, incorporating drilling capability and functionality to gather, process, and export production within a 30-mile radius. It will thereby provide regional synergies, reduce costs and lower risk, reducing the number and size of the facilities and operations in this frontier area, resulting in a lower environmental impact than would otherwise be achieved.

Gotcha is reportedly believed by Total to be a marginal field, with potential recoverable reserves of ~100 MMBOE. Consequently, a forced move to a less than optimum location could impact its development options. Sources close to Total claimed Shell's development permit application shows their anchors would conflict with Total's plans, resulting in issues between the two operators.

The MMS approved Shell's development proposal on the condition that it provides financial compensation to Total for any extra costs caused by a requirement to move one of its development wells to another location.

Depending upon the outcome of discussions between Total and Shell, it is possible that Total may elect not to pursue the project regardless of the outcome of a technical feasibility study started earlier this year. The study, focused on Exmar's deep-draft semi-submersible as a production facility, should have been completed by early May.

Another issue underlying the dispute is that Total indicates that Gotcha is an extension of Shell's Great White discovery that centers on AC 857. Given the rule of capture that prevails in the GoM (remember the old lease line wells?), this means that the operator starting production first will probably leave a smaller volume of hydrocarbons behind for the operator of the second field to recover. Consequently, Total is eager to get Gotcha on stream before Great White. Should the Perdido Host, centered on Great White, come online first, the economics of Gotcha would suffer. The fields included in the Perdido Regional Host; i.e., Great White, Tobago and Silvertip, are together expected to be several times larger than Gotcha with an estimated reserve life of 20 years, compared to an estimated 10 for Gotcha. The Perdido Hub is being designed to handle 130,000 BOEPD.

- **Dominion** on 30-April announced an agreement to sell its offshore natural gas and oil exploration and production operations to Eni Petroleum Co. Inc., a subsidiary of Italian energy company Eni, for approximately \$4.76 billion. The sale involves ~967 BCFE of proved natural gas and oil reserves on the GoM shelf and deep water as of 31-Dec-06 for a transaction value of ~\$4.92/MCFE for proved reserves. The properties involved had an average daily production of approximately 503 MMCFGEPD during 2006.

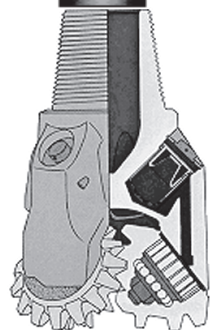
The sale of the offshore E&P assets to Eni is expected to close by early July 2007, subject to customary closing conditions and adjustments.

Eni has operated in the US since 1966. Pre-purchase, it holds interests in 242 leases in the GoM and 151 leases in Alaska. The acquisition increases Eni's equity production in the Gulf of Mexico from the current 36,000 BOEPD to more than 110,000 BOEPD in the second half of 2007, and its 2P equity reserves by 222 MMBOE. Eni quotes an implied cost per barrel of US \$18.4. From 2007-2010, production from the acquired assets will average more than 75,000 BOEPD.

The primary assets involved are Devils Tower, Triton and Goldfinger (75%), Front Runner (37.5%), San Jacinto (53.3% operated), Q (50%), Spiderman (36.7%) and Thunderhawk (25%). These fields account for ~70% of the total reserves acquired.

In addition, Eni will further enhance its portfolio in the Gulf of Mexico with new leases with significant exploration potential.

The deal is consistent with Eni's strategy of acquiring hydrocarbon reserves and production in key areas, where it can increase materiality and play an important role as operator utilizing Eni skills and technologies in deepwater development.





This acquisition, said Paolo Scaroni, Eni's CEO, is central to our strategy. "We grow our production and achieve relevant synergies with Eni's other US activities. Through this transaction we reach the necessary critical mass for our activities in the Gulf of Mexico, and will leverage on our technologies and competence in offshore and deep offshore." This acquisition follows others this year in Congo, Angola, Alaska and Russia and represents a further step in Eni's growth strategy.

While Dominion and its predecessor entities; i.e., Consolidated Natural Gas Supply Corporation and CNG Producing Company, have been fixtures in the New Orleans E&P scene, Eni's offices are located in Houston. Eni is offering employment to employees in New Orleans. Per the terms of agreement with Dominion, Eni will keep offices in New Orleans for at least a year, or it will pay severance to the New Orleans employees if it moves, Donovan said. Eni is taking over Dominion's lease, at 1250 Poydras St.

- **Marathon Oil Corporation** on 30-May-2007 announced that it successfully completed the appraisal of the previously announced Droshky discovery on Green Canyon Block 244. Following the discovery well, the appraisal process consisted of drilling a downdip sidetrack well and a lateral sidetrack well. The discovery is located in ~2,900 feet of water, two miles south of the Troika Field Production System. The initial well was drilled to a MTD of 21,190 feet and encountered ~250 feet of net oil pay. The downdip appraisal sidetrack encountered >600 feet of net oil pay, while the lateral sidetrack encountered ~300 feet of net oil pay. Preliminary analysis suggests that Droshky holds 30-32 degree API fluids, similar to the Troika Field. All pay intervals are Upper Miocene in age.

According to Philip G. Behrman, Marathon senior vice president of Worldwide Exploration: "The Droshky discovery is a good example of using higher quality seismic to see the value of a deeper opportunity adjacent to salt".

Based upon these well results, Marathon estimates the mean recoverable resources at Droshky to range from 80 to 90 MMBOE. The Company expects to produce the field via subsea completions through the Troika system and Bullwinkle Platform, with terms already in-place. The timing of initial production will be dependent upon delivery of key equipment; i.e., a drilling rig and subsea equipment, and regulatory approvals, but could be as early as 2010. Marathon holds a 100 percent working interest in the Droshky prospect and a 50 percent working interest in the Troika Unit.

*Paul Post*

## July 20 - Geology Symposium on Flood Protection Issues in Coastal Louisiana

NOGS, the Louisiana Geological Survey and the Southeast Louisiana Flood Protection Authority-West are co-sponsors for a one-day Technical conference focused on geologic problems regarding flood protection. The symposium will be presented at the Moreau Center on the West Bank campus of Holy Cross College from 9:30am until ~3:00 pm with a brief recess for lunch on your own.

Plans are to invite the Southeast Louisiana Flood Protection Authority – East Commissioners as honored guests.

It is urgently necessary for NOGS and the other sponsors to create this forum for technical, geological presentations because many of the new Commissioners are experts in other fields, but have not yet been informed about regional and coastal, surface and subsurface, geological circumstances affecting their flood protection efforts.

Presenters will include: Sherwood "Woody" Gagliano, Roy Dokka, Steve Nelson, John Lopez and Ivor van Heerden

Julie Baxter, an attorney with MWT Law, will moderate the panel Q&A session after the presentations. Ms. Baxter was the 2006 President of the Baton Rouge Press Club and a weekend news anchor at WAFB-TV in Baton Rouge.

Please check the NOGS website for more information, support it with your presence and RSVP to the NOGS office, (504) 561-8980, by July 16 so we can save you a seat.

**When Mother Nature doesn't back down.**




**We have experts up to her challenge.**

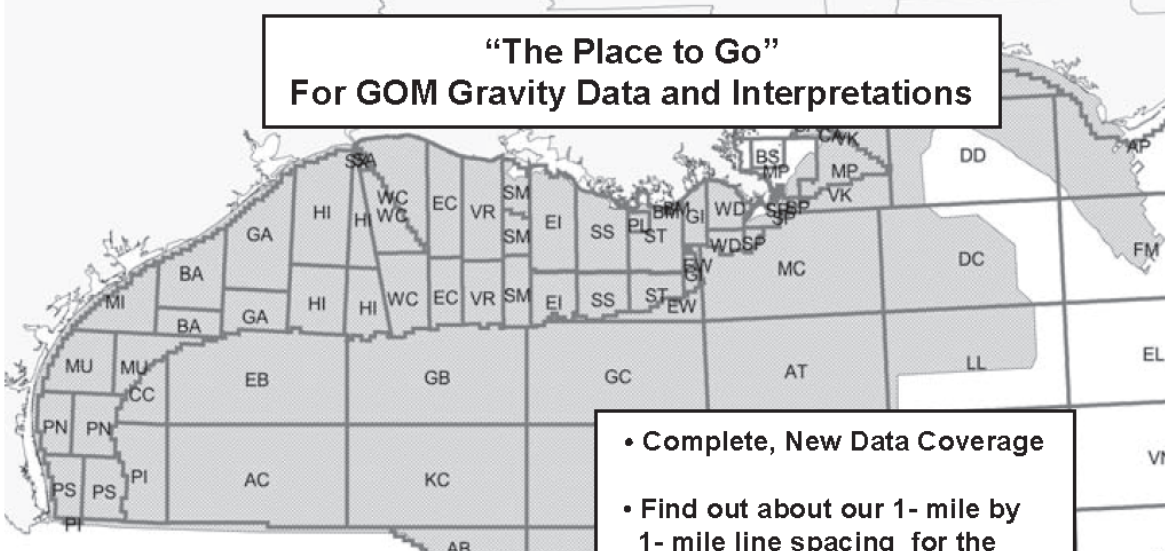
While Mother Nature is a powerful force to reckon with as evidenced by Hurricanes Katrina and Rita, responding to extraordinary challenges is a way of life at Shell. And Charlie Williams, Chief Scientist and Engineer, is definitely up to the task. Under his lead, a record-setting 1000-ton rig lift and 2700 feet deep pipeline repairs for one of Shell's key oil production platforms in the Gulf of Mexico were safely completed ahead of schedule bringing much-needed supply back into production. Learn more about how Shell uses technology to secure energy by visiting [shell.com/us/sepc](http://shell.com/us/sepc)



Robertson



**“The Place to Go”  
For GOM Gravity Data and Interpretations**



**FUGRO ROBERTSON INC.**  
 Contact: Dave Schwartz  
 Tel: (713) 369-6100  
 Fax: (713) 369-6110  
 Email: [infofri@fugro.com](mailto:infofri@fugro.com)  
[www.fugro-lct.com](http://www.fugro-lct.com)

- Complete, New Data Coverage
- Find out about our 1- mile by 1- mile line spacing for the entire deepwater
- PSDM Support
- 3D Modeling



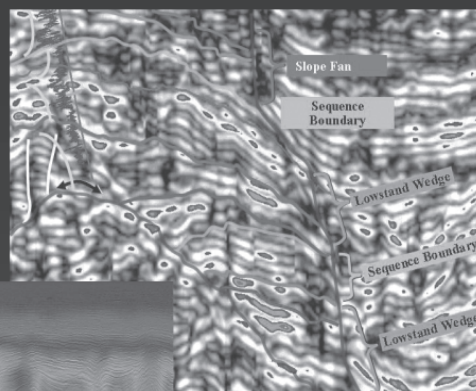
# Fairfield *does more for you*



## Acquisition

### Z3000 Node System

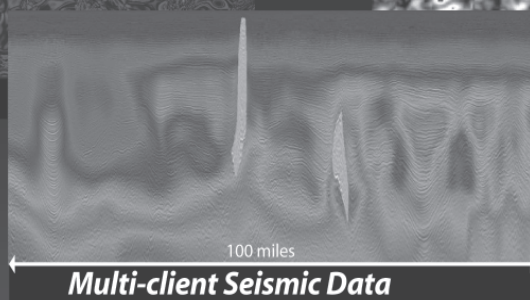
The latest and most advanced seismic system of its kind – the Z3000 Node System acquires data to 3000 meters of water depth.



## Processing

### SPICE

Fairfield's ongoing research and development efforts bring new technologies to the marketplace. For example, Fairfield's new SPICE technology shows critical structural and stratigraphic detail extracted from the seismic wavelet.



### Prestack Depth Migration

This 100-mile crossline is an extraction from Fairfield's multi-client database.

The color velocity overlay, created from Fairfield's proprietary 3D tomographic, pre-stack depth migration velocity analysis, demonstrates the complexity of the geology.

**Fairfield is the resource** explorationists can depend on for the acquisition and processing of proprietary and multi-client data. For 30 years Fairfield's seismic knowledge and understanding has brought major advances to the seismic industry.



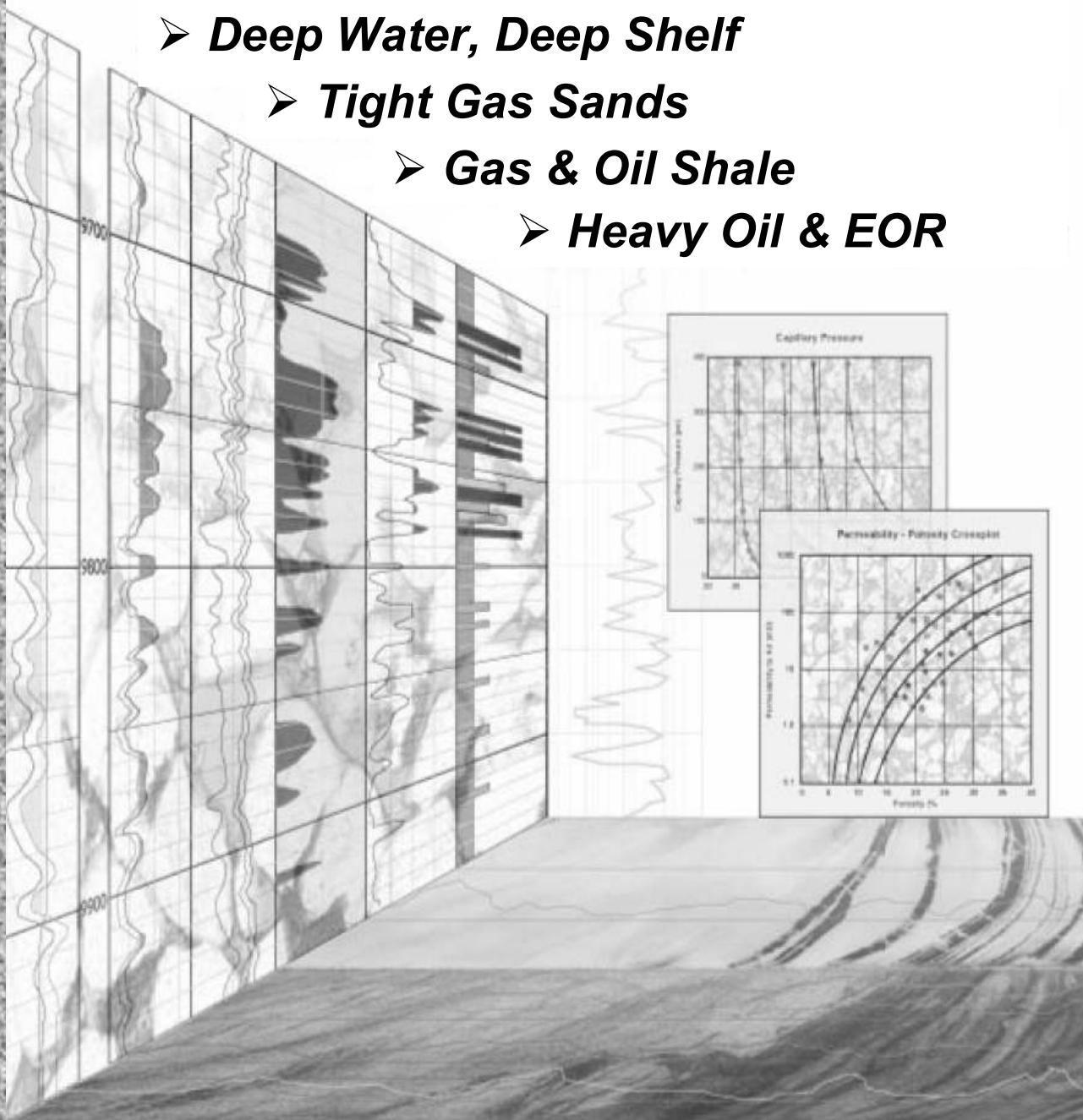
Houston (1) 281-275-7500  
New Orleans (1) 504-525-6400  
Denver (1) 303-716-1630

Jakarta (62) 21-5296-4565  
Ho Chi Minh City (84) 8-556-6130  
[www.fairfield.com](http://www.fairfield.com)

## **ROCK-BASED PETROPHYSICAL SOLUTIONS**

*Core Lab offers a unique approach to petrophysical evaluations for even the most challenging reservoir.*

- **Deep Water, Deep Shelf**
- **Tight Gas Sands**
- **Gas & Oil Shale**
- **Heavy Oil & EOR**



Pay Recognition

Core-Log Data Integration  
Recommendations

Improved Reservoir Estimates Completion  
Reservoir Performance Prediction

### ***Answers From The Rocks***

New Orleans (504) 733 6583

Houston (713) 328-2121

Lafayette (337) 837-8616

**[www.corelab.com](http://www.corelab.com)**



## BLAST FROM NOGS PAST

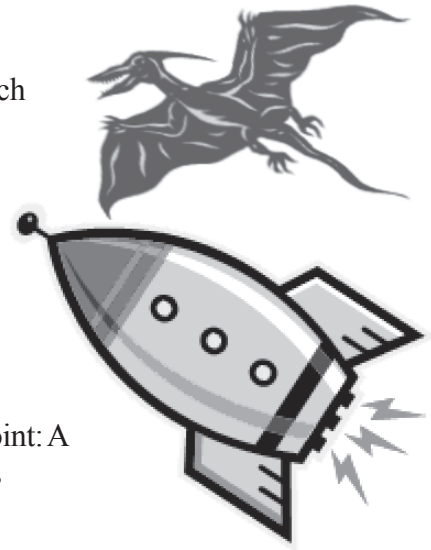
**10 Years Ago (July 1997):** Al Baker's President's column announced the launch of the first ever NOGS webpage.

**20 Years Ago (July 1987):** A tough time to find good news from. From Richard A. Edmund's President's Column: "Next month we hope to publish some results from the recent NOGS Questionnaire. In the section on employment, our early responses indicated that 25% of the membership may be unemployed or underemployed."

**30 Years Ago (July 1977):** The title of this month's presentation was "Door Point: A Buried Volcano in Southeast Louisiana". Jules Braunstein discussed Cretaceous volcanics, or more specifically igneous intrusions, offshore St. Bernard Parish.

**40 years Ago (July 1967):** The President's Corner by H. Grady Collier Jr. noted that NOGS' application for tax exempt status was still pending with the IRS. Note that NOGS was already 25 years old at that time.

- Tim Piwowar



---

## INFO TIDBITS

🦘 **200-year-old Shipwreck Excavated in the Gulf of Mexico:** In May, an archeological team including the Minerals Management Service and the Texas A&M Department of Oceanography and Nautical Archeology began the excavation of the "Mardi Gras Shipwreck" in 4,000 feet of water. The deepest non-commercial shipwreck excavation undertaken. The shipwreck takes its name from the Mardi Gras Gas Transmission line, found while an ROV surveyed the proposed pipeline route. Little is known about the ship, but artifacts recovered, including a stove, small arms chest, glassware, ceramics, cannon, and other items, are giving clues.

Details about the excavation can be found at <http://www.flpublicarchaeology.org/mardigras/>, or at the MMS's website at: <http://www.mms.gov/ooc/press/2007/press0522a.htm>

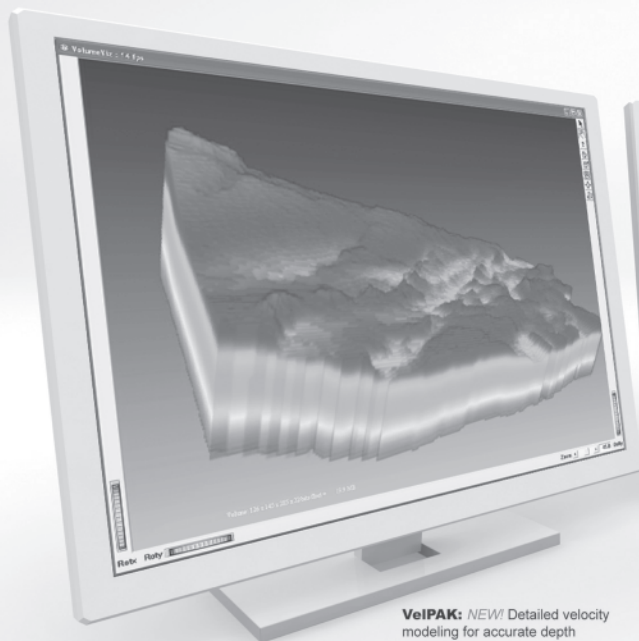
🦘 **Mars Rovers Still Going:** The mars rovers, Spirit and Opportunity, are still operating and sending valuable data from the Martian surface. Initially expected to operate for 90 days back in January of 2004, the rovers have delivered superior performance in spite of mechanical challenges such as Spirit's right front wheel which no longer turns and needs to be dragged in reverse. The overarching consensus seems to be that Mars has been significantly shaped by water in the past, and recent discoveries of an abundance of silica continue to hint at the possibility of "life forms", perhaps in the Martian caves where water vapor may be trapped. The next Earth-launched probe will be the Phoenix Mars lander which will be equipped with a robotic arm that will be capable of digging into the icy surface.

Information and updates of the Mars expedition can be found at [www.space.com](http://www.space.com)

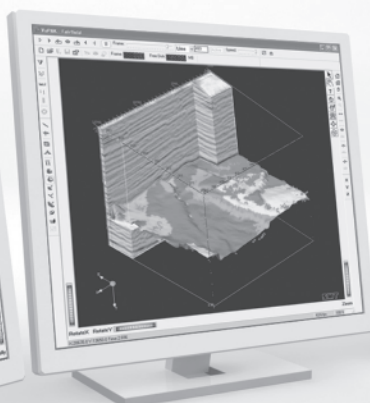
**Robert Rooney**

now available **version**

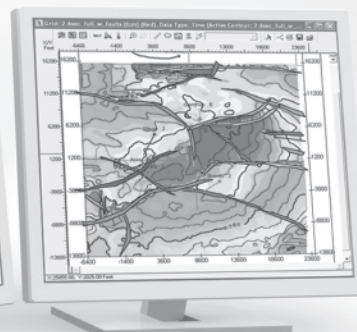
**8.1**



**VelPAK:** *NEW!* Detailed velocity modeling for accurate depth conversion.



**AVOPAK/VuPAK:** 3D view speaks volumes about your AVO anomalies.



**2d/3dPAK:** Afford yourself the flexibility of an integrated package whether you have 2D data or 3D data.

## Have you reached your full potential?

Whether you are a geologist, geophysicist, engineer, or executive, success requires software that is fully integrated, flexible, and comprehensive. With KINGDOM, you can move easily in and out of components with only a single click of the mouse. In addition, all users have access to the same data set whether you are interpreting seismic data or deciding to drill. *(A network license gives you the ability to run simultaneous users, thus multiplying your productivity.)*

### KINGDOM 8.1 offers two new products:

- VelPAK for velocity modeling and time-depth conversion
- LogPAK for automated quick-look log analysis

### Other new features include:

- triangulate fault surfaces
- erase horizon or grid values within polygons

- display log signature maps
- digitize raster logs with the click of a mouse
- view AVO Gathers in VuPAK
- perform spectral decomposition in RSA

Reach your potential, call for your **KINGDOM 8.1 TODAY!**



Seismic Micro-Technology, Inc.  
www.seismicmicro.com

**E&P BASED. Software FOCUSED.**

North America: +1 713 464 6188 Europe: +44 (0)20 8240 6524 Asia: +65 6220 1089

©2007 All Rights Reserved. Seismic Micro-technology, Inc.  
VelPAK developed with Equipose Software.



# THE NEW ORLEANS GEOLOGICAL SOCIETY MEMORIAL FOUNDATION, INC.

The Memorial Foundation is an IRS Tax Exempt Code #501 (c)(3) organization. The Federal I.D. is: 72-1220999. Please consider making your donation prior to the close of this year's fiscal cycle which is September 30, 2007. Your individual support in any amount will help meet the IRS Guidelines for our Foundation. *Thanks!*

## \$15,000 AND ABOVE

### Gibbett Hill Foundation

*In Memory of Steve & Marion Millendorf,  
William J. Prutzman, Roger G. Vincent & Ron Youngblood*

## \$8,000 TO \$9,000

### GCAGS Matching Funds

## \$3,000 TO \$4,000

Paul C. McWilliams

## \$1,000 TO \$3,000

### Olga Braunstein Succession

### NOGS Golf Tournament May 2006

*In Memory of Bill Craig*

## \$500 TO \$1,000

Richard W. Boebel

Dorothy N. Wise

*In Memory of William H. Wise*

## \$250 TO \$499

Carlo C. Christina

*In Memory of Al Gilreath*

## UP TO \$249

### Don and Carol Andrews

*In Memory of T. Wayne Campbell*

*In Memory of Wayne H. Grimes*

*In Memory of Robert W. Sabate'*

### Robert J. Ardell

*In Memory of Robert W. Sabate'*

*In Memory of Francis X. Bland*

### Edward C. Austin

*In Memory of Charles L. Jones*

### Al and Susie Baker

*In Memory of Robert W. Sabate'*

### Jack R. Banttari

### Maurice N. Birdwell

*In Memory of Jim Davis*

### Cynthia A. Bradford

### Hilary James Brook

### Jack and Lucretia Bryant

*In Memory of Robert W. Sabate'*

### Elisha A. Buckner

### F. Robert Bussey

*In Memory of Lee Meltzer*

### Chevron

*Matching Funds*

### Arthur F. Christensen

### Clarence F. Conrad

### Willis E. Conatser, PhD

### Charley and Trudy Corona

*In Memory of Robert W. Sabate'*

### Michael A. Danahy

### Robert M. Danos

*In Memory of Robert W. Sabate'*

### M. R. "Bob" Douglass

### Exxon Mobil Foundation

*Matching Funds*

### Michael N. Fein

### Richard H. Fillon

### Brent J. Foster

*In Memory of Robert W. Sabate'*

### Laurens Gaarenstroom

### Peter G. Gray

*In Memory of Robert W. Sabate'*

### Bernard L. Hill, Jr.

*In Memory of Robert E. Osborne*

### Owen R. Hopkins

### John H. Houser

### Dan E. Hudson

### Thomas A. Hudson

### Thomas E. Johnson

### Thomas Charles Klekamp

*In Memory of Robert W. Sabate'*

### Richard G. Klibert

### John C. Langford

*In Memory of Robert W. Sabate'*

### Jeannie F. Mallick

### William J. Malin

### Casey R. Mobley

### New Orleans Geological

*Auxiliary*

*In Memory of June Philpott*

### Russell H. Nordwell

### William J. O'Leary

### Richard A. Olsen

*In Memory of Robert W. Sabate'*

### William S. Peirce

### Elizabeth M. Petro

### Edward B. Picou Jr.

*In Memory of Shelby W. Smith*

*In Memory of Robey H. Clark*

### Brenda E. Reilly

### Edmund L. Russell

*In Memory of Francis X. Bland*

### John C. Scheldt

# FONO FUND

The FONO Fund accepts contributions that are invested and the income dedicated to assure sufficient financial resources will always be available to maintain the NOGS business office. Contributors are reminded that donations to the FONO Fund are not covered by the IRS 501 (c)(3) tax exempt classification and should be reported as a business expense on your IRS tax report.

## \$6,000 AND ABOVE

### GCSSEPM Foundation

## \$600

Richard W. Boebel

Willis E. Conatser

## \$500

James A. Hartman

*In Memory of Robert W. Sabate'*

## UP TO \$249

Donald I. Andrews

Alfred H. Baker Jr.

Joseph E. Boudreaux

Cynthia A. Bradford

Jack G. Bryant

*In Memory of Shelby W. Smith*

J. Sybil Calloway

Anthony Carollo Jr.

Arthur F. Christensen

James S. Classen

Richard P. Colomes

Joffre J. Crouere

Michael A. Danahy

John Dombrowski

Merle J. Duplantis

Richard A. Edmund

Niles R. Faulk

Michael N. Fein

Laurens Gaarenstroom

David Garner

Peter G. Gray

Stewart L. Henry

Bernard L. Hill, Jr.

Thomas A. Hudson

Thomas Charles Klekamp

Russell J. Landry

William J. Malin

Jeannie F. Mallick

George M. Markey, Jr.

Louis L. McCormick

Paul C. McWilliams

Robert G. Murphy

William J. O'Leary

Richard A. Olsen

Edward B. Picou, Jr.

*In Memory of Robert W.*

*Sabate'*

William S. Peirce

James P. Raymond, Jr.

Brenda E. Reilly

C. R. Rondeau

Monte C. Shalett

Rudolf B. Siegert

Dirk L. Smith

Raymond Stephens

H. Leighton Steward

Stephen Szydluk

Scott A. Wainwright

Roy C. Walther

Arthur S. Waterman

Robert C. Weissmann

James W. Yeldell Jr.

Jim Zotkiewicz

CONTRIBUTIONS FOR BOTH FUNDS  
THROUGH JUNE 8, 2007. DONATIONS  
ARE LISTED FOR ONE YEAR.

### Armour C. Winslow

*In Memory of Rita Menzel Winslow*

### Frances A. Wiseman

*In Memory of Steve Widdicombe*

### James W. Yeldell, Jr.

### Jim Zotkiewicz

### *In Memory of Bill Craig*

Robin A. Broussard

Chevron

M. R. "Bob" Douglass

Bernard L. Hill, Jr.

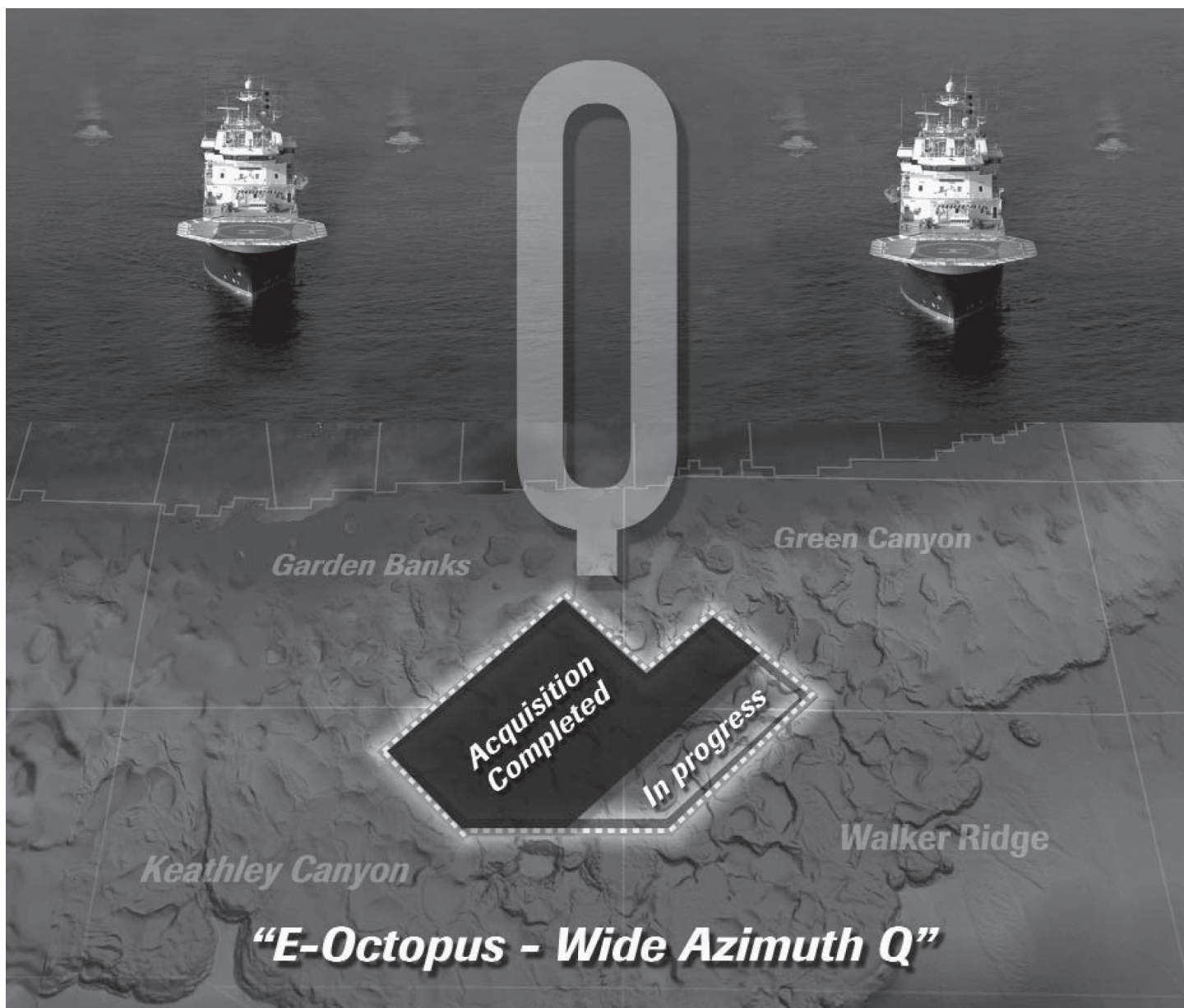
Jeff Jandegian

John C. Scheldt

James R. Strahan

Candace V. Strahan

Luncheon  
"Roundup"  
Donations



## ***Elevate to a new level***



We've **E**levated phase 2 of our E-Octopus WAZ survey using a radically new and **E**nhanced acquisition technique, complimented by Q-Marine higher signal-to-noise ratios and wider bandwidth that are so crucial in imaging subsalt.

To find out more about the changes that will deliver new data to your desk in advance of the next lease sale call 713-689-1000.

[www.multiclient.westerngeco.com](http://www.multiclient.westerngeco.com)

***Multiclient<sup>E</sup>***





## Dominion Exploration & Production, Inc.

OFFSHORE BUSINESS UNIT  
(Including South Louisiana)

1250 Poydras Street  
New Orleans, LA 70113  
Tel: 504-593-7000  
Fax: 504-593-7665

[www.dom.com](http://www.dom.com)

New Orleans | Houston | Oklahoma City | Calgary  
Jane Lew, WV | Indiana, PA | Traverse City, MI | Roosevelt, UT



### Collarini Energy Staffing Inc.

Full-Time and Temporary  
Exploration and Production Personnel

Facilities · Drilling · Production · Reservoir Engineers  
Landmen · Geoscience · Information Technology  
Health and Safety · Management · Procurement  
Accounting · Administrative Support

Houston and New Orleans  
(832) 251-0553 · Fax (832) 251-0157  
[www.collarini.com](http://www.collarini.com)

Connecting the Industry's Experts



### Collarini Associates

4200 South I-10 Service Road, Suite 230  
Metairie, Louisiana 70001  
(504) 887-7127  
(504) 887-7162

Reservoir Engineering  
Oil & Gas Property Evaluation  
3-D Seismic Interpretation  
Integrated Field Studies

New Orleans • Houston  
[www.collarini.com](http://www.collarini.com)

## ATWATER CONSULTANTS, LTD.

REGISTERED AND CERTIFIED PETROLEUM PROFESSIONALS

GEOLOGICAL, ENGINEERING, GEOPHYSICAL,  
TRAINING AND EXPERT WITNESS SERVICES

318 Camp Street  
New Orleans, LA 70130

Tel. (504) 581-6527  
Fax (504) 524-7798

## MURPHY

EXPLORATION &  
PRODUCTION  
COMPANY - USA

131 SOUTH ROBERTSON STREET  
NEW ORLEANS, LA 70161-1780

P.O. BOX 61780  
(504) 561-2811



### CIMAREX ENERGY CO.

GULF OF MEXICO REGION  
GOM, SE La., N. La., MS, AL

1100 Poydras St.; Suite 1100

Keith Gourgues

New Orleans, Louisiana 70163

Region Manager

504-586-1815 / Fax 504-586-9035

## NORTHCOAST OIL COMPANY

610 E. Rutland St.  
Covington, LA 70433  
(985) 898-3577  
(985) 898-3585 FAX

Jack M. Thorson  
Eric C. Broadbridge  
J. Daryl Gambrell  
Raymond W. Stephens

(832) 242-6000 (O)  
(713) 917-0493 (O)

(504) 931-7506 (C)  
[johnjurasin@jurasinoilgas.com](mailto:johnjurasin@jurasinoilgas.com)

## JURASIN OIL & GAS

9700 Richmond Ave., Suite # 124  
Houston, TX 77042-4821

JOHN M. JURASIN  
President

Cert. Pet. Geologist #4284  
Cert. Prof. Earth Scientist #1961

 <p><b>Shoreline Gas Inc.</b>  <a href="http://www.shorelinegas.com">www.shorelinegas.com</a>  Full Service Natural Gas Marketing</p>	<p><i>Advertising space is  available for the <b>NOGS  LOG</b> - Please contact the  <b>NOGS</b> office for  information!</i></p>	
<p><b>ANSYTHE</b>  Donald I. Andrews  504-887-3432</p> 		
<p><b>BOO-KER OIL &amp; GAS CORP.</b>  Gray S. Parker  826 Union, Suite 300  New Orleans, LA 70112  Bus. (504) 581-2430  Fax (504) 566-4785</p>	<p><b>H. WARREN BELL</b>  Oil and Gas Exploration  2500 Tanglewilde, Suite 485  Houston, TX 77063-2126  Bus (713) 266-7297  Fax (713) 266-7298</p>	
<p><b>C &amp; R EXPLORATION, INC.</b>  Carlo C. Christina  Lawrence G. Ringham</p>	<p><b>R. W. BOEBEL</b>  Petroleum Geologist  170 Broadway Street, Suite 321  New Orleans, LA 70118  (504) 866-4313</p>	
<p><b>C. R. RONDEAU</b>  Petroleum Geologist  119 W Southland Ave.  Ironwood, MI 49938  Res. (906) 932-4692</p>	<p><b>RAFIDI OIL AND GAS, INC.</b>  Jaser N. Rafidi, President  4415 Shore Dr., Suite 202  Metairie, LA 70006  Bus. (504) 722-2942  Fax (504) 888-5539; Res. (504) 888-1661</p>	
<p><b>CLASSEN EXPLORATION, INC.</b>  James S. Classen  Looking for close in deals  P.O. Box 140637  Boise, ID 83714  Bus. (208) 854-1037  Fax (208) 854-1029  classenllc@msn.com</p>	<p><b>ROY C. WALTHER</b>  Petroleum Geologist  2421 Prancer Street  New Orleans, LA 70131  Bus. (504) 392-8513  Res. (504) 392-9332</p>	
<p><b>COLLES C. STOWELL</b>  Oil and Gas Consultant  2288 Chisolm Trail  Salado, TX 76571  (254) 947-8977</p>	<p><b>RUDOLF B. SIEGERT</b>  Petroleum Geologist  P.O. Box 2740, Slidell, LA 70459  (985) 641-4265</p>	
<p><b>EDWARD B. PICOU, JR.</b>  Consulting Micropaleontologist - Retired  228 St. Charles Ave., Suite 1330 C  New Orleans, LA 70130  Bus. (504) 529-5155  Res. (504) 282-3096</p>	<p><b>STONE ENERGY CORPORATION</b>  James H. Stone, Chairman of the Board  David H. Welch, President &amp; CEO  LL&amp;E Tower, Suite 2650, 900 Poydras St.  New Orleans, LA 70112-4000  (504) 581-7766</p>	
<p><b>D-O-R ENGINEERING, INC.</b>  3-D and Geoscience Services  120 Oil Center Dr., Bldg. 12  P.O. Box 51707, Lafayette, LA 70505  Bus. (337) 233-2378  Fax (337) 233-2907</p>	<p><b>TONY CAROLLO</b>  Consulting Geologist  Unitization Geosteering Field Studies  1701 Peach Street  Metairie, LA 70001  Bus. (504) 885-0004  Res. (504) 885-6829</p>	

## NOGS Website Contest

June's website trivia question was, "Of what rock is the Shell Building's exterior constructed?" One Shell Square was constructed in 1972 from Italian travertine and bronze glass. The building's structure is a double tube system, with a steel core and a concrete perimeter. With 51 floors at a total height of 697 feet, it is still the tallest building in Louisiana.. Here's some real trivia to impress your friends if they claim that the Place St. Charles office building with 53 floors is the tallest building - One Shell Square is actually 52 feet higher than Place St. Charles. At 716 feet tall with 69 floors, the new Trump International Hotel & Tower will snatch the highest building title when completed in 2009.

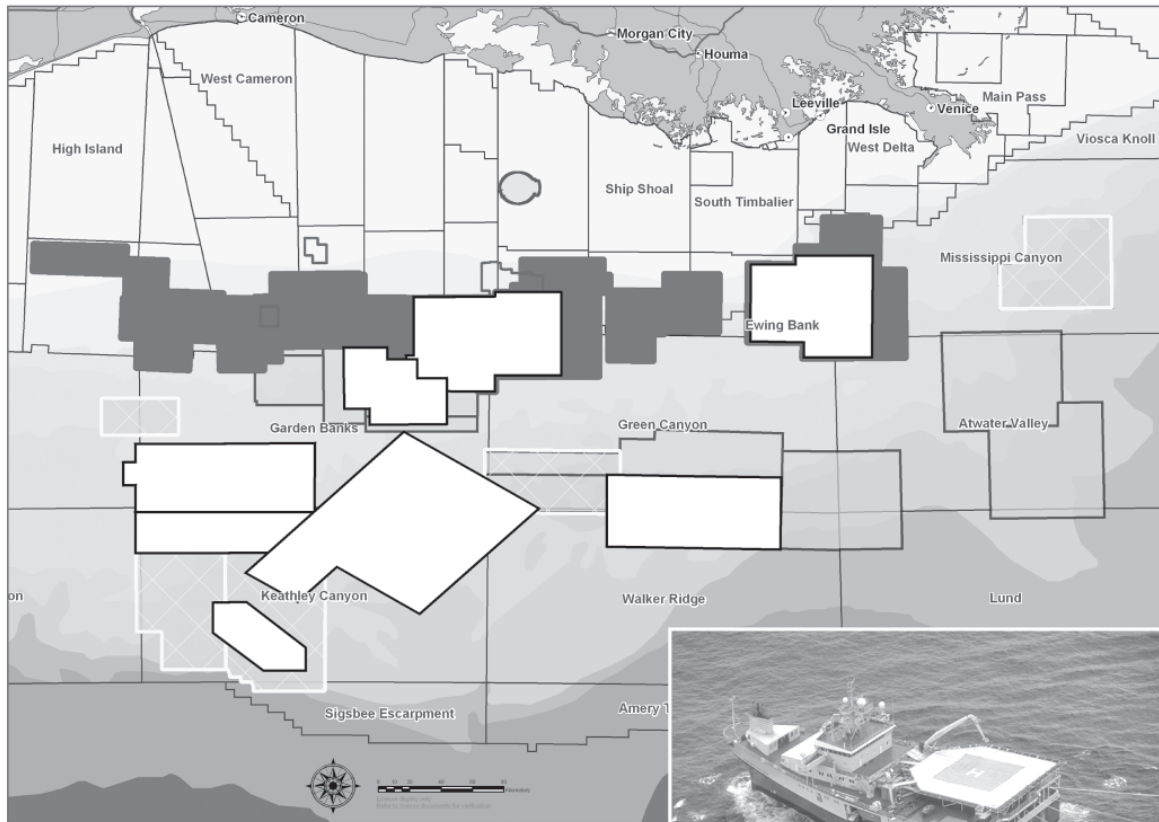


To become next month's winner, remember to look for the hidden NOGS question on our website, [www.nogs.org](http://www.nogs.org), and correctly answer the question. Happy surfing, and good luck finding and answering this month's question!



## The Data You Need

## PGS Gulf of Mexico Library



For more information email [gominfo@pgs.com](mailto:gominfo@pgs.com)



### Map Legend

- PreSDM Full Volume
- PreSDM Grids
- PreSTM FlexR
- PGS\_3D\_4C
- PostSTM Streamer and Seafloor Seismic

### 3D Prestack Time and Depth Migration Projects:

- Flex Trend (FlexR) and deep water reprocessing projects
- True amplitude processing
- Bending ray Kirchhoff PSTM
- Turning wave Kirchhoff PSDM
- Wave equation PSDM

**HOUSTON**  
 15150 Memorial Drive  
 Houston, TX 77079  
 Tel: 281-509-8000 / Fax: 281-509-8500

**A Clearer Image**  
[www.pgs.com](http://www.pgs.com)



# SEI®

**Seismic Exchange, Inc.**

**Strategic Speculative Surveys  
Geophysical Data Marketing & Management**

201 St. Charles Avenue, Suite 4300, New Orleans, Louisiana 70170-4300  
Telephone 504.581.7153 Fax 504.581.9591  
[www.seismicexchange.com](http://www.seismicexchange.com)

**Your**  
**Full Service  
National  
Seismic Data  
Marketing Firm**

New Orleans  
Dallas  
Houston  
Denver  
Oklahoma City  
Corpus Christi  
Tulsa

**MARINE PROPERTIES, LLC  
BERKSHIRE EXPLORATION CO.**  
MONTE C. SHALETT, CPL, PRESIDENT  
3030 Lausat Street BUS. (504) 831-7779  
Metairie, LA 70001-5924 FAX. (504) 831-8315

**PCI** **Paleo Control, Inc.** Houston, Texas  
713-849-0044

Drilling Wells, Studies and Data Base  
Loyd Tuttle Frio, SE Texas  
Bob Liska Wilcox, S and SE Texas  
Jim Thorpe Miocene and Cam-Miogyp



**WWW.NOGS.ORG**

**NEW ORLEANS GEOLOGICAL SOCIETY**



810 Union Street, Suite 300  
New Orleans, LA 70112-1430

**DATED MATERIAL**