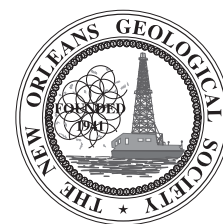


# NOGS LOG

WWW.NOGS.ORG



Official Publication of the New Orleans Geological Society, Inc.

January 2007

Volume 47, Number 7

## JANUARY AND FEBRUARY ACTIVITIES

### NOGS Events

#### January 8 - NOGS Luncheon

Rick Fritz, Executive Director of AAPG, will present  
"Geohuman vs. Geodigital - Access for the Future."

(See Page 7 for Abstract and Biography)

#### LE PAVILLON HOTEL

Check with concierge or front  
desk for location

Lunch served at 11:30am

#### ADMISSION:

with reservation ..... \$25.00

without reservation ..... \$30.00

Student Member with reservation ..... Free

#### February 5 - NOGS Luncheon

Mike Blum of LSU's Department of Geology and Geophysics will present "Holocene Sea-Level Change along the Northern Gulf of Mexico Shoreline and the Flexural Ups and Downs of the Mississippi Delta."

The *Nogs Log* staff wishes you and your family a most joyful Holiday Season. We appreciate your support throughout the year and are grateful for all of the articles you have shared with us in 2006. Let's not lose sight of the fact that the first 2006 NOGS Log was published in February, the first one since Hurricane Katrina; and would not have happened except for the hard work of Paul Post, Annette Hudson, Jannette Sturm-Mexic, and others on the Board of Directors.

#### FROM THE EDITOR



Robert Rooney  
Editor *NOGS Log*

#### INSIDE THIS ISSUE

|  |             |
|--|-------------|
| Winners of the November NOGS Trivia Contest .....                                | Page 10     |
| NOGS Memorial: Robert W. Sabaté .....  | Pages 12-13 |
| NOGS Congratulates Member Award Recipients<br>at the 2006 GCAGS Convention ..... | Pages 14-15 |
| NOGS Fall Field Trip Recap and Photos .....                                      | Pages 16-18 |
| Super Science Saturday Returns .....   | Page 34     |



25 months and 30 days ago this well hit TD  
**TOMORROW MORNING YOU WILL  
KNOW WHAT THEY KNOW.**



### **GOM New Release Data**

Beginning August 1st, A2D Technologies will be the sole provider of Gulf of Mexico New Release digital LAS well log data resulting from its contract with the Minerals Management Service. Every well drilled in the Gulf of Mexico will be available immediately online the day it is released.

For more information, visit [www.a2d.com/newrelease/](http://www.a2d.com/newrelease/)



Your Well Log Data Marketplace

[www.a2d.com](http://www.a2d.com)



**NOGS Office**

Office Manager: Annette Hudson

Office Hours: 8:30am – 3:30pm on Monday-Wednesday-Friday

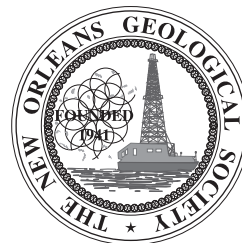
Tel: 504-561-8980 • Fax: 504-561-8988

E-mail: info@nogs.org • Website: www.nogs.org

The office is located at Suite 300, 810 Union Street, New Orleans, LA 70112.

Correspondence and all luncheon reservations should be sent to the above address.

Sent to press on December 20, 2006.

**BOARD OF DIRECTORS**

|                 |                      | <b>Company</b>          | <b>Phone</b> | <b>E-mail</b>            |
|-----------------|----------------------|-------------------------|--------------|--------------------------|
| President       | Michael N. Fein      | W & T Offshore          | 504-210-8148 | mikef@wtffshore.net      |
| Vice President  | Robert G. Murphy     | ORX Resources, Inc.     | 504-581-1806 | bmurphy@orx.com          |
| Secretary       | Jeanne F. Phelps     | Phelps Geoscience Serv. | 504-931-5651 | jsfphelps@yahoo.com      |
| Treasurer       | Reino F. Clark       | MMS                     | 504-736-2711 | reino.clark@mms.gov      |
| President-Elect | Art Johnson          | Hydrate Energy          | 504-464-6208 | artjohnson51@hotmail.com |
| Editor          | Robert Rooney        | CLK Energy              | 504-529-6100 | rrooney@clkenergy.com    |
| Director 2007   | William Whiting      | Consultant              | 504-947-8495 | bootscon@aol.com         |
| Director 2008   | Alfred H. Baker, Jr. | Beacon Exploration, LLC | 504-836-2710 | abaker1006@aol.com       |
| Director 2009   | Willis E. Conatser   |                         | 504-469-2496 | weconatser@aol.com       |

**COMMITTEE**

|                          | <b>Chairperson</b>   |                          |              |                                      |
|--------------------------|----------------------|--------------------------|--------------|--------------------------------------|
| AAPG Delegates           | Thomas C. Bergeon    | Century Exploration      | 504-832-3772 | tom.bergeon@centuryx.com             |
| AAPG Student Chapter     | Bobby Cosentino      | Tulane University        | 504-865-5198 | rcosentino@tulane.edu                |
| AAPG Student Chapter     | Bryan Rogers         | UNO                      | 504-736-2772 | thgem@gmail.com                      |
| Advertising-Log          | TBA                  |                          |              |                                      |
| Awards                   | Michael N. Fein      | W & T Offshore           | 504-210-8148 | mikef@wtffshore.net                  |
| Ballot                   | Reino F. Clark       | MMS                      | 504-736-2711 | reinoofclark@hotmail.com             |
| Best Paper               | David E. Reiter      | Dominion E & P Inc.      | 985-893-8072 | david_e_reiter@dom.com               |
| Continuing Education     | Jeanne F. Phelps     | Phelps Geoscience Serv.  | 504-931-5651 | jsfphelps@yahoo.com                  |
| Employment Counseling    | Paul J. Post         | MMS                      | 504-736-2954 | paul.post@mms.gov                    |
| Entertainment            | Art Johnson          | Hydrate Energy           | 504-464-6208 | artjohnson51@hotmail.com             |
| Environmental            | Don Evans            | Murphy Expro USA         | 504-561-2497 | don_evans@murphyoilcorp.com          |
| External Affairs         | Michael A. Fogarty   | Pennant Exploration      | 504-891-5400 | fogarty@airmail.net                  |
| Field Trip               | David Garner         | Shell                    | 504-728-6154 | david.garner@shell.com               |
| Finance and Audit        | David E. Balcer      | Chevron                  | 504-592-6725 | dbalcer@chevrontexaco.com            |
| Historical               | Edward B. Picou, Jr. | Consultant               | 504-529-5155 | epicou@bellsouth.net                 |
| Membership/Directory     | Penne Rappold        | Shell                    | 504-728-4338 | prappold@gmail.com                   |
| New Geoscientists (NGNO) | TBA                  |                          |              |                                      |
| Nominating               | Brenda E. Reilly     | Energy Partners Ltd      | 504-799-4811 | breilly@eplweb.com                   |
| Non-Technical Education  | Duncan Goldthwaite   | Consultant               | 504-887-4377 | dgoldthwt@aol.com                    |
| Office Operations        | Scott A. Wainwright  | Mustang Energy           | 504-889-2700 | swainwright@mustangenergy.com        |
| Publications Sales       | Edward B. Picou, Jr. | Consultant               | 504-529-5155 | epicou@bellsouth.net                 |
| Photography              | George H. Rhoads     | Chevron                  | 504-592-6873 | grhoads@Chevron.com                  |
| School Outreach          | Thomas C. Bergeon    | Century Exploration      | 504-832-3772 | tom.bergeon@centuryx.com             |
| Scouting                 | David Gillis         | Schlumberger             | 504-592-5360 | gillis1@new-orleans.oilfield.slb.com |
| Sponsorship-Houston      | David G. Cole        | Consultant               | 832-689-0411 | D.G.Cole@sbcglobal.net               |
| Sponsorship-New Orleans  | Leslie Broussard     | Diversified Well Logging | 504-352-4612 | sales@dwl-usa.com                    |
| Technical Projects       | Jeanne F. Phelps     | Phelps Geoscience Serv.  | 504-931-5651 | jsfphelps@yahoo.com                  |
| Ad Hoc Committee on      |                      |                          |              |                                      |
| University Support       | Michael J. Gallagher | Dominion                 | 504-593-7480 | Michael_J_Gallagher@dom.com          |

**NOGS LOG STAFF**

|              |                      |            |              |                       |
|--------------|----------------------|------------|--------------|-----------------------|
| Editor       | Robert Rooney        | CLK Energy | 504-529-6100 | rrooney@clkenergy.com |
| Editor-Elect | Timothy J. Piwowar   | Shell      | 504-728-4066 | tim.piwowar@shell.com |
| Auxiliary    | Beverly Kastler      | NOGA       | 504-286-0879 | kastler1@aol.com      |
| Calendar     | Ryan M. Ott          | Chevron    | 504-592-6803 | ottrm@Chevron.com     |
| Info Tidbits | Robert Rooney        | CLK Energy | 504-529-6100 | rrooney@clkenergy.com |
| Drill Bits   | Paul J. Post         | MMS        | 504-736-2954 | paul.post@mms.gov     |
| Webmaster    | Jannette Sturm-Mexic |            |              | webmaster@nogs.org    |

**NOGS AUXILIARY**

| <b>Officers</b>    |                 | <b>Phone</b> | <b>Directors</b> | <b>Year</b> | <b>Phone</b> |
|--------------------|-----------------|--------------|------------------|-------------|--------------|
| President          | Susie Baker     | 504-466-4483 | Peggy Campbell   | 2007        | 504-283-2505 |
| 1st Vice-President | Linda Peirce    | 504-393-7365 | Ann Gilbert      | 2007        | 504-889-2104 |
| 2nd Vice-President | Jean Jones      | 540-738-8091 | Dolores Murphy   | 2007        | 504-393-0878 |
| Secretary          | Judy Lemarie'   | 504-393-8659 | Carol Andrews    | 2008        | 504-887-3432 |
| Treasurer          | Peggy Rogers    | 504-392-6323 | Alma Dunlap      | 2008        | 504-737-2678 |
| Parliamentarian    | June Perret     | 504-881-9357 | Earleen Rodan    | 2008        | 504-887-4370 |
| Member-at-Large    | Beverly Kastler | 504-286-0879 |                  |             |              |

--- NOGS Contact List continued on page 8---

see **clearly**

## From shelf to deepwater, our analytics help you dive into the Gulf with confidence.

The industry's **most comprehensive** reservoir analogs for 201 deepwater and deep shelf Gulf of Mexico fields.

The **only databank** of pre-engineered valuations and Capex profiles for 42 deepwater discoveries.

Detailed **pressure data and analyses** covering mud weights, production tests and formation pressures across the Gulf.

For deeper plays, you need deeper data—and all the insight you can get. So we've pioneered unique benchmarking databases to complement our extensive Gulf of Mexico well, log and production data. All of which gives your own analyses a head start, from play entry to field optimization.

See for yourself. For a map showing deepwater fields, expiring acreage and sample analogs, visit [ihs.com/energy/bestdata](http://ihs.com/energy/bestdata).

See further. See opportunity. See clearly.

©2006 IHS Inc. All Rights Reserved.

888 OIL DATA  
[www.ihs.com/energy](http://www.ihs.com/energy)



**The Source**  
for Critical Information and Insight™





*from the President*

## HALFTIME

Welcome to the NOGS Halftime Report, brought to you by a host of great, and growing by leaps and bounds, dedicated sponsors.

The NOGS offense played well enough to lead at the close of the first half. With 2nd quarter adjustments, we are now stemming the flow of the red ink rush. We are recovering from our weather "injuries". Rookies, as well as our veterans have stepped up their game. Our "coaching staff" is the best, and you, our "fans", are solidly behind us.

In the first half, Bob Murphy's program calls brought you the shelf, sinking, leaking, and drivin' us to drinking.

Dave Garner set us up on Steve Nelson's "Katrina - What Happened?" road trip, another sold-out winner. With that win, you know you will see more in the second half.

Penne Rappold has put members in the seats, with now nearly 560 of us in the fold. Given that most organizations have lost a third or more of their members, our losses are less than half that. Thanks for being a part of it.

Jannette Sturm-Mexic has the website humming, keeping us fans up-to-date on all the facts and stats. The LOG is now electronic, and we hope more to come. Website hits, especially for our wonderful advertisers, are way up.

And speaking of the LOG, have you noticed how much original content you have seen? How 'bout Tim Piwowar's "Blast from the Past" section! And in spite of publisher problems, Robert Rooney is grinding out the issues in time for all meetings.

The NOGS Memorial Foundation, an entity separate from NOGS itself which generates its own income, gave \$23,000 in scholarships to deserving students from LSU, Tulane, and UNO. That's payback!

Most importantly, Mike Gallagher stepped up and headed the NUNO, or the Ad-hoc Committee on University Support. Already NOGS has participated in the UNO Mineral Auction, and has given a seminar on what is happening in oil and gas.

And we certainly cannot leave out Leslie Broussard, whose ideas are generating tremendous sponsor support, and getting the "red" out.

Finally, Coach Annette Hudson keeps us all honest, maintains the intellectual archives, and eliminates most of my potential turnovers.

And what is halftime without entertainment? Art Johnson set us up at Chad's where Jim Rapier held court on the upcoming season, and followed that up with our holiday party at Vincent's. Special props to NOGS own "Saintsation" Kimberly Smith who has most ably assisted both Art and myself.

Do not think that we coast to the finish line in the second half!

Coming are not one, but two Jeanne Phelps Continuing Educations Seminars, beginning March 28th. Depositional Environments 101 with Dr. Mike Blum of LSU is coming.

The NOGS Golf Tournament is returning. There is at least one more field trip in planning.

The "NUNO" Committee will be teaching a course on oil and gas at UNO in the spring semester. It will continue to assist in returning Petroleum Geology to prominence at UNO, and Mike is working on a 5-10 year game plan.

Tom Bergeon has Super Science Saturday returning to the Children's Museum on April 7th!

The Directory is coming!! The Directory is coming!!

Entertainment? You bet! In planning now is the two-shore challenge, the simultaneous wine tasting on the north shore and the south shore. Which side will win? Also under consideration is a joint industry crawfish boil, trying to restore a fun event with an economy of scale.

We also have not forgotten the newer geologists in or organization, in attempting to link to the Young Professionals Network started by SPE. We will have more on that when the link is operational.

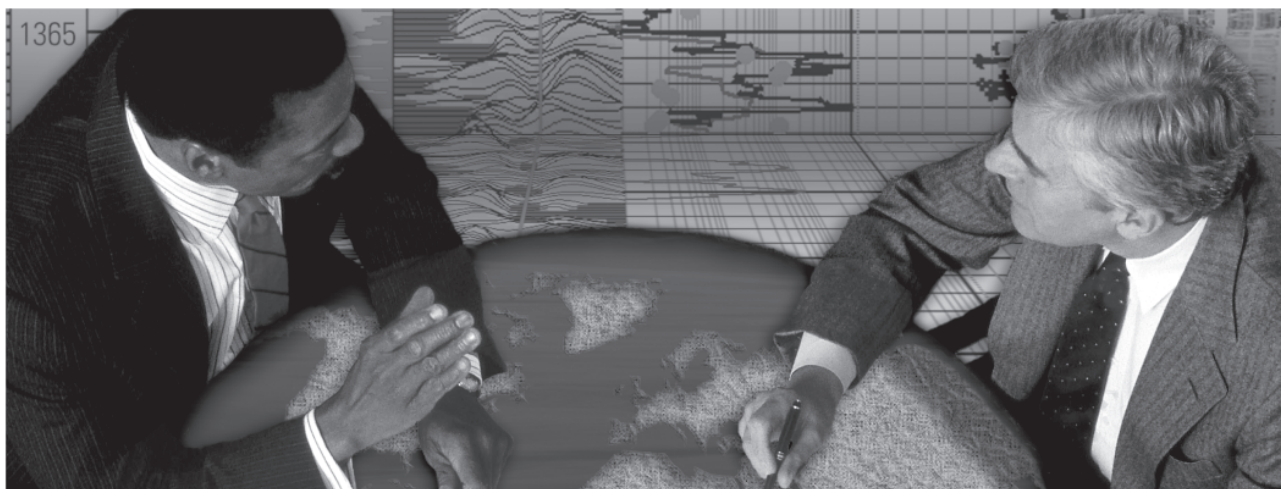
We are also pleased to note from Carol Avery, that the Region 9 Science and Engineering Fair returns after a one-year absence. It will be held in the First Baptist Church on Canal Boulevard on March 15. NOGS will be there with judges and all six of its special awards.

AND then the PLAYOFFS!!

Now let's get out there and fight ...er...participate!

*Michael Fein*

**Schlumberger formation evaluation solutions deliver the answers you need.** Our extensive portfolio of services, leading-edge technology, and advanced conveyance options keep you in communication with your well throughout its life cycle.



*With formation evaluation technologies from Schlumberger, you can make the best decisions for optimized performance in every well.*

## **The formation evaluation one-stop shop**

Whether you are logging in open hole or behind the casing, our broad selection of services ensures the best solution for acquiring formation evaluation data. Tools can be conveyed while drilling or on wireline or pipe. We offer many specialized evaluation capabilities, from density, neutron porosity, and resistivity to borehole imaging, nuclear magnetic resonance logging, borehole seismic, formation pressure testing, and fluid sampling. Advanced triple-combo logging options include the VISION\* formation evaluation and imaging-while-drilling services. Coupled with Pulse\* telemetry and surveying services, the VISION family provides real-time formation evaluation data and enables optimum well placement.

High-speed wireline measurements are recorded with the Platform Express\* logging services. The SlimXtreme\* platform is designed for high-pressure, high-temperature environments and the ABC\* Analysis Behind Casing services are used after casing is set.

Expert interpretation from the engineers and geoscientists of Schlumberger Data & Consulting Services brings all your data together to give you the answers you need. This expertise is available after logging is complete or as real-time two-way wellsite communication through the InterACT\* real-time monitoring and data delivery system.

Schlumberger delivers leading-edge technology and interpretation expertise for all your formation evaluation needs, so every well benefits from the very best information.

**For more information visit**  
**[www.slb.com/oilfield/formation\\_evaluation/](http://www.slb.com/oilfield/formation_evaluation/)**

\*Mark of Schlumberger

04-FE-114

# Schlumberger



# January 8 Luncheon Presentation

## Geohuman vs. Geodigital - Access for the Future

presented by

**Rick Fritz**

AAPG Executive Director

### ABSTRACT

Exploration and research tools for "oil finders" are once again moving petroleum geoscientists and engineers deeper into the digital age. Technological advances and new software allow geological data to be manipulated easier than ever before. Petroleum geoscientists have the capability to correlate logs, pick tops, and build cross-sections and maps all without leaving the computer. Yet, there is still a tremendous amount of geological data that needs to be digitally captured-data which could be lost and unavailable if we do not preserve it and place it in useful formats.

Twelve years ago the American Association of Petroleum Geologists (AAPG), through a company called

Datapages, started a project designed to digitize literally every "jot and title" of AAPG's publications. Now AAPG is fully digitized and all of our new products are digital from start to finish. Datapages initiated a digital umbrella or aggregate that included SEPM (Society of Sedimentary Geology) and GCAGS (Gulf Coast Association of Geological Societies). We are in the process of adding new data from affiliated and associated societies such as the Canadian Society of Petroleum Geology and the Indonesian Petroleum Association. Many of the society publications are out-of-print and the

--- continued on page 13 ---

### BIOGRAPHY

**Richard D. (Rick) Fritz** is the Executive Director of AAPG. Rick became Executive Director of the American Association of Petroleum Geologists in August, 1999. He is responsible for the management of AAPG headquarters in Tulsa, Oklahoma and the oversight of numerous programs for AAPG's 30,000 members. In November, 1999, Fritz also became the Executive Director of the AAPG Foundation and is responsible for the oversight of the distribution and investment of Foundation funds.

Rick started his career by working for Exxon in development geology in South Texas and later, as an exploration geologist in the Mid-continent. After leaving

Exxon, Rick worked as a consultant and manager in the development of geological and geophysical studies in the Mid-continent, Gulf Coast and Black Warrior basin. In 1989, Rick became vice-president of Masera Corporation and supervised major exploration research projects in the U.S., and in the Middle East and Africa.

Before coming to AAPG, Rick was the President of MXC Corporation working as an independent explorationist in the Gulf Coast and Mid-continent. Rick has been an active AAPG member, especially in the Division of Professional Affairs, where he was treasurer and president-elect.

**THE LUNCHEON RESERVATION DEADLINE IS JANUARY 3, SO CALL THE NOGS OFFICE - TODAY!**

### "And Looking Ahead..."

The next luncheon will be February 5. Mike Blum of LSU's Department of Geology and Geophysics will present "Holocene Sea-Level Change along the Northern Gulf of Mexico Shoreline and the Flexural Ups and Downs of the Mississippi Delta." Contact the NOGS office at 561-8980 or use the e-link on the NOGS website ([www.nogs.org](http://www.nogs.org)) to make your reservation.



Mike Blum greets the December luncheon speaker Michael Quinn of Chevron who presented "No Guts, No Glory - Two Recent Discoveries in Stratigraphically Controlled Upper Miocene/Lower Pliocene Sands in Ship Shoal 181 and 194/206."

# BLAST FROM NOGS PAST

15 Years Ago (Jan. 1992): In yet another example of NOGS generosity to our community through the years, Jack Langford's President's column announced an opportunity at the next luncheon "to view and identify the prototype rock and mineral collection that our school information committee has put together for donation to fifty area high school science departments."

30 Years Ago (Jan. 1977): The following notice is a great indication of how technology has changed. "Projectionist Needed: Anyone who is interested in serving as projectionist at the monthly NOGS meetings should contact President Shelby Smith. This is your chance to be a star!"

45 years Ago (Jan. 1962): The annual NOGS Christmas Dance held Dec. 16, 1961 at the Tulane Room of the Jung Hotel was a resounding success. Approximately 275 tickets were sold. "Santa Claus (Bill McCarty) greeted people at the door and soon found his way to the dance floor, demonstrating the Crockett, Texas 'Twist'."

-Tim Piwowar




---

## NOGS CONTACT LIST

--- continued from page 3 ---

### MEMORIAL FOUNDATION BOARD OF TRUSTEES

|                   |                      | Company             | Phone        | E-mail                        |
|-------------------|----------------------|---------------------|--------------|-------------------------------|
| 2006-07 Chairman  | Scott A. Wainwright  | Mustang Energy      | 504-889-2700 | swainwright@mustangenergy.com |
| 2006-07 Secretary | Michael N. Fein      | W & T Offshore      | 504-210-8148 | mikef@wtoffshore.net          |
| 2006-07 Trustee   | Edward B. Picou, Jr. | Consultant          | 504-529-5155 | epicou@bellsouth.net          |
| 2006-07 Trustee   | TBA                  |                     |              |                               |
| 2007-08 Trustee   | Doug Cristina        | Consultant          | 985-630-5621 | dcristina@charter.net         |
| 2007-08 Trustee   | George T. Froming    | Consultant          | 504-799-1918 | gfroming@eplweb.com           |
| 2008-09 Trustee   | David E. Balcer      | Chevron             | 504-592-6752 | dbalcer@chevrontexaco.com     |
| 2008-09 Trustee   | Tom Klekamp          | Amber Resources LLC | 985-845-4046 | klekamp@bellsouth.net         |

### AAPG DELEGATES

#### Term Ends

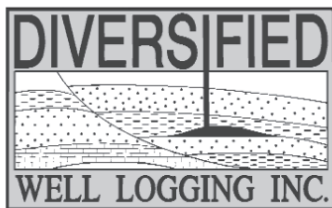
|         |                     |                      |              |                           |
|---------|---------------------|----------------------|--------------|---------------------------|
| 2007    | Thomas C. Bergeon   | Century Exploration  | 504-832-3772 | tom.bergeon@centuryx.com  |
| 2007(a) | J. Stephen Tissue   | Chevron              | 504-592-6030 | stevetissue@Chevron.com   |
| 2008    | Irion Bordelon, Jr. | Cimarex Energy       | 504-586-3023 | lbordelon@cimarex.com     |
| 2008    | Carol Rooney        | Consultant Geologist | 504-835-1909 |                           |
| 2008(a) | James Cearley III   | Chevron              | 832-854-2655 | james.cearley@chevron.com |
| 2008(a) | Arthur T. Cerniglia | CIG Exploration      | 504-780-0097 | cigexploration@yahoo.com  |
| 2009    | David E. Balcer     | Chevron              | 504-592-6725 | dbalcer@Chevron.com       |
| 2009    | William Whiting     | Consultant           | 504-947-8495 | bootscon@aol.com          |
| 2009(a) | Nancy Dawers        | Tulane University    | 504-862-3200 | ndawers@tulane.edu        |
| 2009(a) | David Cooke         | MMS                  | 504-736-2609 | david.cooke@mms.gov       |





## Relax. We'll keep you posted.

Your rig is offshore and you are not. How do you know what's going on so many miles away? You know because we tell you. Daily or even hourly, Diversified Well Logging's engineers update you on the status of your rig. We are your eyes and ears, especially when it comes to deep water or high pressure, high temperature areas. Diversified offers 24-hour surface evaluation. We provide secure and customized real-time data communication, in-house research and development and 24/7 on-call support for our equipment and our engineers. Whether you have a 10-day job or 110-day job, we provide the specialized attention you require. So, relax. We're with you every step of the way.

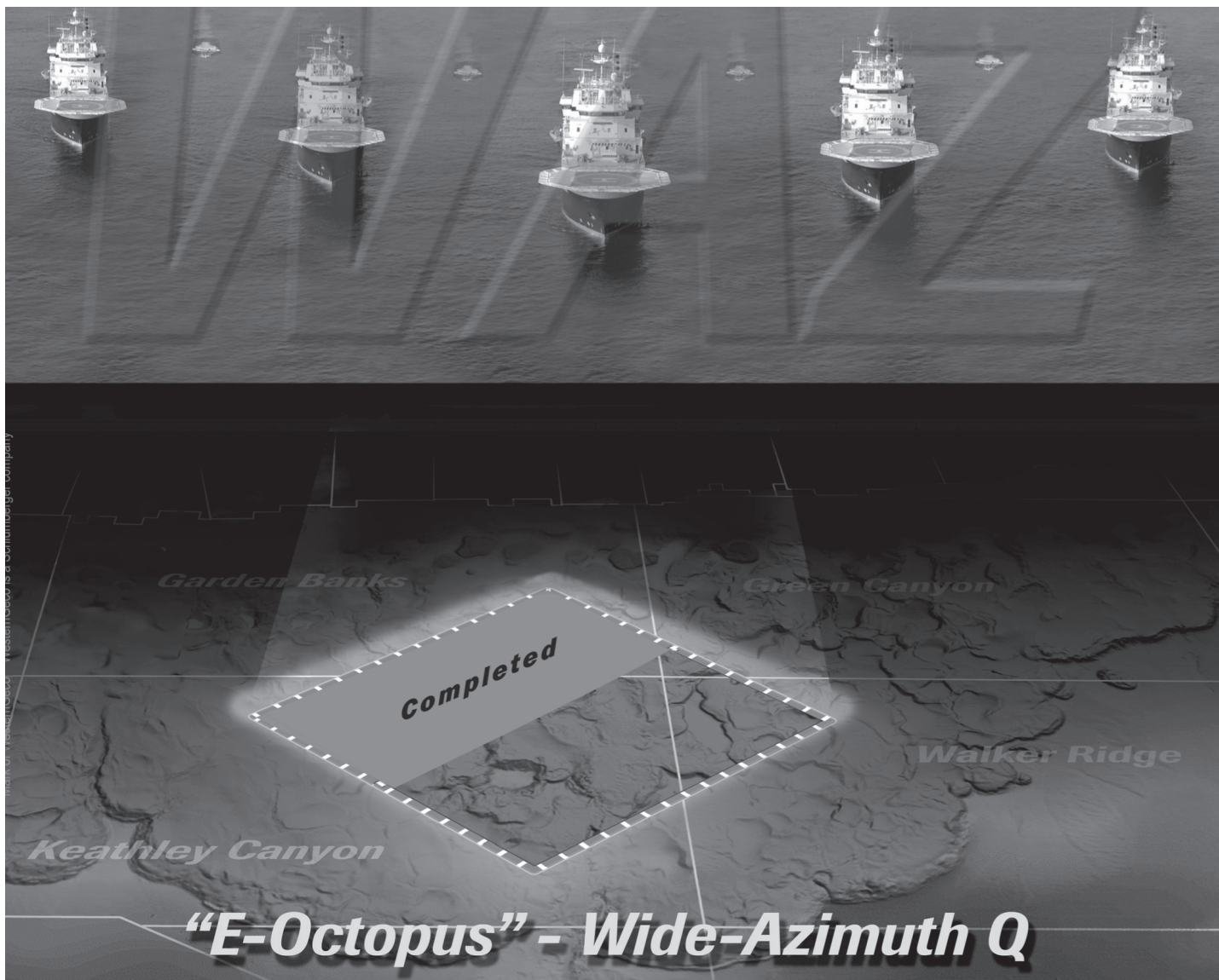


*Serving the Gulf Coast for over 40 years.*

New Orleans • Lafayette • Houston • Dallas • Corpus

800.280.2096

711 West 10th Street • Reserve, LA 70084 • Phone: 985.536.4143 • Fax: 985.536.2427  
sales@dwl-usa.com



# ***Go wider. Get subsalt.***



## ***The First Multiclient Wide-Azimuth (WAZ) survey***

*Improved subsalt illumination in complex areas*

- Follow up on Gulf of Mexico Lease Sale opportunities
- 200 blocks of E-Octopus WAZ already acquired and in processing
- Enhanced by innovative Q-Marine<sup>®</sup> wide-azimuth technology
- Take advantage of WesternGeco leadership in WAZ depth-migration techniques
- Build on established WesternGeco E-Cat experience in this challenging area

Make more informed drilling decisions with WesternGeco WAZ

To learn more, call 504-592-5200 today.



## Congratulations to the Winners of the November NOGS Trivia Contest!

Winners of the NOGS Trivia Contest for November were presented with their awards at the December Luncheon at LePavillon. The winners answered the November trivia quiz “Name the chemical compound which covers  $\frac{3}{4}$  of the Earth’s surface”, and received a NOGS Prize Pack which consists of a magnifying glass with the NOGS logo, a famous NOGS Lapel Pin, and a NOGS voodoo doll which were originally ordered for a previous NOGS event to ward off hurricanes. As Mike Fein pointed out “who says those things don’t work.” The winners receiving their awards from NOGS President Mike Fein, from top left clockwise are: George Froming (EPL), Tim McCarty (Taylor Energy), and Tim "Smith" Maciejewski (MMS) on behalf of his wife Diana "Dee" Smith. Tom Klekamp (Amber Resources), pictured lower left, received an award for submitting photos of the NOGS Fall Field Trip.



The December trivia question was, “Who was the 2006 NCAA basketball champion?” How could you guys NOT know it was FLORIDA who won the 2006 NCAA Basketball Championship! The trivia question for January can be found by going to the NOGS website at [www.nogs.org](http://www.nogs.org) and looking for the the above graphic and hidden question.

# NOGS Memorial

## Robert W. Sabaté



On November 4, 2006, NOGS and the science and profession of geology lost one of their most distinguished members with the death of Robert Sabaté. After a brief but hard-fought illness, he lost his battle with cancer. He was 75.

Bob was born in Los Angeles and raised in New Orleans, where he moved with his family in 1940 and where he was educated in parochial schools. Bob earned his B.S. in geology from Tulane University in 1952. He then served in the U.S. Navy as an officer before receiving his M.S. in geology from Louisiana State University in 1957.

Bob began his career with Shell Oil Company, where he spent 15 years, first in Baton Rouge and then New Orleans, working on various geological assignments in the Gulf Coast onshore and offshore. During this period, Bob somehow found time to continue his schooling at night. He received a Certificate in General Commerce from Tulane in 1963, an M.B.A. from Loyola University of the South in 1967, and a J.D. from Loyola in 1972. In 1969, Bob married Judith Kennedy. He and Judy have two fine sons, Pierre and Etienne.

Bob left Shell in 1972 to join Koch Exploration Company and eventually became Vice President-Exploration, Gulf Coast. In 1986, he left Koch and practiced as an independent geologist until late 1987 when he became co-founder and President of the San'Doil Company. At the time of his death he was President of Energetix Petroleum L.C., a company he co-founded in 1998.

Since the late 1960's Bob tirelessly contributed his many talents to geological professional organizations. He served the New Orleans Geological Society as President, Vice President, and Secretary. He chaired numerous NOGS committees and contributed a paper to a NOGS publication. In 1989, he was awarded an Honorary Life Membership by NOGS. He also received two President's Awards.

Bob was ever-active in the AAPG from whom he received three Certificates of Merit. He served two terms in the House of Delegates, was Chairman of its Constitution and Bylaws Committee, and served twice on the Advisory Council, for his first term having been chosen by the GCAGS as its representative. He was General Chairman of the National Convention in 1993. Bob was a DEG member, was past President of the DPA, and was Chairman of the joint SIPES-DPA Model Forms committee. Bob drafted its Confidentiality and Consulting agreements.

His GCAGS activities were many. He was Secretary in 1987-88, Vice Chairman of the 1988 Convention, Co-Chairman of the Levorsen Award Committee, Co-Chairman of the Tectonic Map of the Gulf Coast Committee for which he received a 1972 GCAGS Outstanding Service Award, twice contributed to the Transactions, and in 1990 received its Distinguished Service Award. In 2002 he was presented Honorary Membership by GCAGS.

Bob's professional affiliations included SIPES National (Notable Services Award) and New Orleans Chapter (Vice Chairman and Chairman), Gulf Coast Section of SEPM, PLANO, SGS, and the Louisiana State Bar Association.

As a geologist, lawyer, and businessman, Bob's talents and interests were many and varied. I knew him well, as he was my business partner and close friend of 65 years. What particularly set him apart was his willingness to get involved. He was a man of conviction and truly a gentleman. He was always willing to help and always willing to serve.

Now, let me tell you about the Bob I knew. We first met when he moved to my uptown neighborhood a year or so before WWII. We were both the same age and we shortly became good friends although a lot of our interests differed as did the grammar and high schools we attended. As a result, we saw less of each other until we reunited at LSU. I was married, he was not. My wife and I lived on the LSU Campus in hutments that the school considered to be marriage dormitories. Bob lived in a regular dorm, but for security reasons kept his motorcycle behind our hut. He would come for lunch or dinner with us once or twice a week. We had two children at the time, so Bob was exposed to little babies for the first time. We had a daughter that was just trying to turn over on her own. One day when he was there, my wife screamed in delight that our baby daughter had turned over by herself so much earlier than her brother.



She went on and on about it until Bob looked up and said, sheepishly, "I turned her over." Another time we asked Bob to hide our son's first small two-wheel bike before Christmas. Bob decided to give the bike a try on Christmas Eve and broke the handlebars. He called and was very upset because he had quite a time finding someone to weld the handlebars, however, he did. Our son never even noticed that his bike had had a problem.

Bob's other interests involved various items including motorcycles, watches, and cameras, among other items. Not too long ago I commented to him that he must have had forty cycles in his lifetime. He said he thought it was about fifty. After Bob and I became partners at Energetix we had come full circle.

Among our differences, Bob was a hunter and I am not. I am a golfer and he was not. We ended up on a Christmas day going duck hunting in the middle of a south Louisiana marsh. Our destination was an old hotel which had been converted to a plush hunting lodge. To make a long story short, we were assigned a guide with a hound dog. We were all in a large pirogue maneuvered by the guide and were within about ten yards of our duck blind when the dog decided to jump out of the pirogue. In so doing, he swamped the pirogue and left us and our shotguns in waist-deep water. A little earlier, a lodge worker had awakened us shortly before dawn and announced that the temperature was 22 degrees. Given the opportunity, Bob would have gone back to our objective blind with the same guide, the same dog, in that same pirogue!

Bob also had a musical talent. He was adept at playing jazzed-up versions of mostly military pieces on his harmonica. He also on occasions played the mandolin.

As to motorcycles, Bob loved going out on one of his bikes on a nice day and going two or three hundred miles. He traveled all over the country on a bike, including at least four trips to California alone.

These stories were meant to illustrate how Bob would get involved in things. He had an insatiable appetite for knowledge. My wife and I have such good memories of all the years of this friendship and know of many more stories that we could relate.

All of us will miss Bob, but we'll never forget him. After they made Bob, they threw away the mold. He was one of a kind and will never be forgotten!

Claude C. Baker

---

### **January 8 Luncheon Presentation Abstract**, continued from page 7

information will be tough to access unless it is captured digitally. Currently, there are 30 societies under the Datapages digital umbrella and the Datapages digital aggregate is largest of its kind in the world.

Although there is still a lot of data to capture, we already have a large database-over 100,000 documents-so now comes the next key step. Data mining, or "drilling" as we like to say, is essentially a description of the process of extracting subsets from a digital database. Many members use AAPG's database only as a large reader file or bibliography. It is much, much more because Datapages is all live digital text-not just PDFs. For example, there are hundreds of core descriptions in AAPG publications. Those descriptions can be mined and placed in distinct searchable subsets. Other subsets include well logs and log analyses, geochemistry data, field descriptions, seismic data, etc.

The final stage of digitization is data transport. The best method of delivery for much of the data is GIS on CD-ROM or the Internet. AAPG/Datapages is in the process of geo-referencing these subsets. For example, AAPG publications contain over 4000 seismic lines. Already AAPG corporate members have the ability to locate these seismic lines on a digital map and access them with a click of a mouse. We ultimately will geo-reference many of the cross sections and maps from the digital umbrella. In the near future, AAPG members will be able to highlight a geographic area with their cursor, and ask for a search of all Datapages documents within that area. That's digital power!

Technology has always provided a boost for the oil and gas industry. It is the key to both our professional success and the world's economic survival. AAPG wants to insure our profession benefits from the best available technology.

## **NOGS Congratulates Member Award Recipients at the 2006 GCAGS Convention in Lafayette**



GCAGS President Barry Wawak  
with Jack Langford



Jim Zotkiewicz (left) accepts the 2006  
Distinguished Service Award from Barry Wawak



Jack Langford (left), and Ed Picou, Honorees of the  
2005 Transactions Dedication display their awards



Allen Lowrie, as co-author, receives the Grover  
Murray Best Published Paper Award for 2004



Teacher of the Year Cathy Boucvalt (left)  
with Jeannie Mallick



Leslie Wood presents Paul Post with the  
Distinguished Service Award



Jim Zotkiewicz and GCAGS Honors and  
Awards Chairman Jeannie Mallick



Barry Wawak (left) with Ed Picou



NOGS Steering Committee at GCAGS (left to right), Art Johnson, Tom Bergeon, Ed Picou,  
Jim Zotkiewicz, Mike Ledet, George Rhoads, Jack Langford, and Bob Sabate'





Road Damage at Lakeshore Drive along the Lake Pontchartrain Seawall



Section of the London Avenue Canal under construction



Warrington Drive: The infamous Ford Mustang filled with sand transported from rushing flood waters at the London Avenue Canal breach

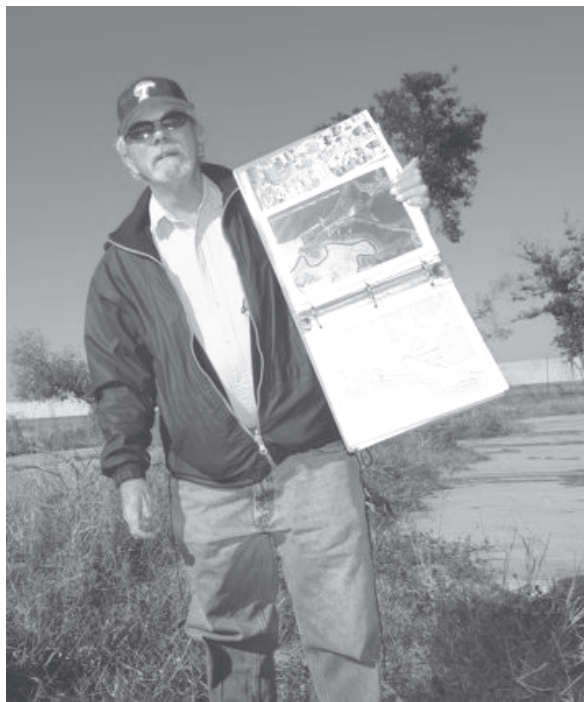
## NOGS Fall Field Trip

### “Hurricane Katrina – What Happened?”

By: Dr. Steve Nelson,  
Tulane University

The 2006 NOGS Fall Field Trip was held on November 4. The field trip was well attended which demonstrated a strong need for understanding of the Katrina flood, and of the unique geological and man-made environment of the New Orleans region. Dr. Steve Nelson of Tulane University lead the group, assisted by Dr. Nancye Dawers, which departed Dinwiddie Hall in volunteer-driven vans at 8:30. The first stop was at the Industrial Canal levee failure spot in the Lower 9<sup>th</sup> Ward, where Dr. Nelson gave the group a comprehensive overview of the geological history of Greater New Orleans. From there, the group made 5 more stops along the London Avenue Canal at Warrington Drive and Pratt Drive, the Orleans Canal at City Park, Lakeshore Drive, and ended the trip at the breach of the 17<sup>th</sup> Street Canal in Lakeview. The weather was spectacular, and an enjoyable time was had by all. The grand finale was a seafood lunch in Bucktown at Deanie’s restaurant.

*Photos courtesy of: Dianna Phu,  
Katrina Cox, Dee Smith, and Tom Klecamp*



Steve Nelson explains local geology to the group in the Lower 9th Ward

Sample of peat soil exposed at the London Avenue Canal breach



Warrington Drive: Recent cross-bedding in sand deposited near the breach of the London Avenue Canal. Note: interesting to see every-day items such as CDs embedded within sedimentary structures.



Warrington Drive:  
Stratigraphic detail of  
sand deposits



**Missed this field trip? Visit <http://www.tulane.edu/~sanelson/Katrina/> to view Dr. Stephen Nelson's tour and comments. This website includes a field guide you can download to take this comprehensive and informative tour.**



Volunteer drivers  
provided transportation.  
The group makes the last  
stop at Lakeview.



*Precise Data.*

*"Click"*

*Unlock the Potential of Your Reservoir.*

Today's reservoirs are more challenging than ever. To unlock their potential requires absolutely precise data. OMNI Laboratories has established higher standards, more thorough protocols, and meticulous quality control measures to ensure unsurpassed accuracy. Plus, we have assembled the finest scientists in the field to provide superior interpretation and analysis. When precise data is paramount, choose OMNI Laboratories.

*At OMNI, We've Got the Answers.*



13 LOCATIONS IN THE U.S., CANADA AND SOUTH AMERICA • HEADQUARTERS: HOUSTON, TX • 832-237-4000 • [WWW.OMNILABS.COM](http://WWW.OMNILABS.COM)



## PALEO DATA

▼ *Integrated foraminifera and nannofossil  
biostratigraphic services*

▼ *Regional paleo databases*

Arthur S. Waterman  
Norman S. Vallette

Michael W. Center

Albert F. Porter, Jr.

Thomas M. Reilly

Richard A. George

Ryan D. Weber

Ann Hare

Donna Lacoste

Rhonda Roederer

▼ *Regional biofacies and isopach maps*

▼ *Comprehensive Gulf Basin  
Deposystem data/map project*

▼ *Well-site services*

6619 Fleur de Lis Drive  
New Orleans, LA 70124  
(504) 488-3711

[www.paleodata.com](http://www.paleodata.com)

MCMORAN EXPLORATION CO.



## McMoRAN OIL & GAS

[www.mcmoran.com](http://www.mcmoran.com)  
NYSE: MMR

1615 Poydras  
New Orleans, LA 70112  
(504) 582-4000  
Fax: (504) 582-4155

P.O. Box 60004  
New Orleans, LA 70160

# SEI®

## Seismic Exchange, Inc.

**Strategic Speculative Surveys  
Geophysical Data Marketing & Management**

201 St. Charles Avenue, Suite 4300, New Orleans, Louisiana 70170-4300  
Telephone 504.581.7153 Fax 504.581.9591  
[www.seismicexchange.com](http://www.seismicexchange.com)

**Your**  
**Full Service  
National  
Seismic Data  
Marketing Firm**

New Orleans  
Dallas  
Houston  
Denver  
Oklahoma City  
Corpus Christi  
Tulsa



## NOGS Membership News & Information

*This is your page. We would like to fill it with your news. In addition to professional news from our members; e.g., promotions, transfers, moves, new employer, etc., we also welcome your success stories. Please e-mail items to [log@nogs.org](mailto:log@nogs.org).*

### NOGS Holiday Party

The NOGS Holiday Party, held on December 8<sup>th</sup>, at Vincent's Italian Cuisine in Metairie was a great success. In attendance were 61 members and guests who enjoyed a delicious buffet of veal & spinach cannelloni, shrimp fettuccine, jambalaya, finger sandwiches, and fried catfish bites (and an open bar). Door prizes included gift baskets and bottles of wine. A great time was had by all.



### New NOGS Members December 2006

Ethan E. Allen  
Coastal Environments, Inc.  
Geologist  
2619-B Executive Pl.  
Biloxi, MS 39531  
558-385-5547

Clare F. Falcon  
Schlumberger  
Sr Geologist  
Ste 2700 - 1515 Poydras St  
New Orleans, LA 70112  
504-592-5385

Barry D. McCutcheon  
Veritas Geophysical Corp.  
Marketing Manager, DP  
10300 Town Park Dr  
Houston, TX 77072  
832-351-8570

Johanna M. Nevitt  
Student-Tulane  
[jnevitt@tulane.edu](mailto:jnevitt@tulane.edu)

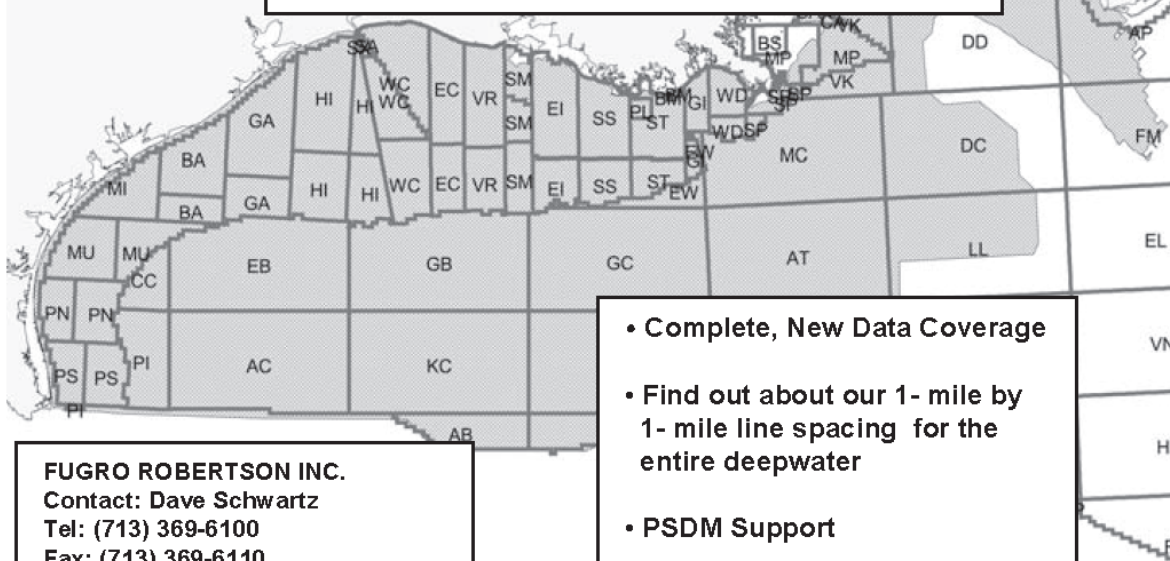
Carol A. Wilson  
Student-Tulane  
[cwilson2@tulane.edu](mailto:cwilson2@tulane.edu)



# Robertson



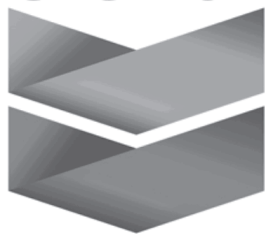
**"The Place to Go"  
For GOM Gravity Data and Interpretations**



**FUGRO ROBERTSON INC.**  
Contact: Dave Schwartz  
Tel: (713) 369-6100  
Fax: (713) 369-6110  
Email: [infofri@fugro.com](mailto:infofri@fugro.com)  
[www.fugro-lct.com](http://www.fugro-lct.com)

- Complete, New Data Coverage
- Find out about our 1- mile by 1- mile line spacing for the entire deepwater
- PSDM Support
- 3D Modeling

## Chevron



**935 Gravier Street  
New Orleans, LA 70112**

**(504) 592-6000**

*"Serving the Oil & Gas Industry Since 1983"*

Geological,  
Geophysical &  
Land Drafting

**Anthony Catalanotto**

*President*

**Stefani Kelone**

*Drafting and Design*



## Geo-Draft, Inc.

*A Professional Drafting & Graphics Firm*

3349 Ridgelake Drive • Suite 202 • Metairie, LA • 70002

Office: (504) 836-2882 Fax: (504) 836-2877

[geodraft@bellsouth.net](mailto:geodraft@bellsouth.net)

*Advertising space is  
available for the  
**NOGS LOG** - Please  
contact the **NOGS**  
office for information!*

**el paso** | Production

1001 Louisiana  
Room S W 2205 A  
Houston, Texas 77002  
Office: (713) 420-2600  
Fax: (713) 420-1643

# PathFinder® LWD Sonic Services

**Highly reliable, accurate and versatile, the PathFinder LWD Sonic Service provides wireline quality compressional and shear slowness data.**

- Standard PathFinder Sonic tools provide real-time compressional and fast shear slowness data.
- Extended measurement e-sonic tools operate at 7 kHz and 15 kHz frequencies to provide slow shear measurements and real-time compressional measurements.

**Reliability, Accuracy, Versatility. We Deliver.**

For more information contact your  
local PathFinder Representative

[www.pathfinderlwd.com](http://www.pathfinderlwd.com)

**PATHFINDER®**

## Employment Postings

### **Entry-level Geologist Opportunity New Orleans, LA or Jackson, MS Location**

Great direct hire opportunity for entry-level geologist to perform core analysis at a growing oilfield services company! Kelly Scientific Resources is recruiting a Geologist to work for our customer, an oilfield services company, in either New Orleans, LA or Jackson, MS. The Geologist will work in a laboratory environment performing test on rock core samples. The Geologist may also occasionally travel to well site locations. The ideal candidate will have a BS degree in Geology or Earth Sciences with some chemistry coursework. Candidates must possess physical strength as some lifting may be required.

This is a direct hire opportunity with a growing company that offers an excellent benefits package. Pay will be in the low \$30,000s.

If you are an entry-level geologist willing to relocate the New Orleans, LA or Jackson, MS, contact Elizabeth Nelson, Senior Recruiter, Kelly Scientific Resources, (713) 690-2155, FAX: 713-690-2192, email: [nelsoea@kellyservices.com](mailto:nelsoea@kellyservices.com).

### **ENTRYLEVEL PETROLEUM GEOLOGIST Fort Worth, Texas Location Salary and Bonus Commensurate with Skills and Experience**

Active exploration and production company is seeking an entry level staff geologist. Will work as an integral part of a team to efficiently and effectively explore and exploit onshore Texas and Louisiana prospects.

BS and/or Masters Degree in Geology or Geophysics required. Strong GPA. Workstation experience a plus. Salary and bonus commensurate with experience. Relocation assistance provided. Excellent benefits package.

Qualified candidates should immediately fax or email a resume to:

J Mar & Associates  
(972) 732-8301  
(800) 864-9043  
FAX: (972) 732-1378  
Email: [resumes@jmarassociates.com](mailto:resumes@jmarassociates.com)

## South Louisiana and Offshore Exploration and Production Activity

# DRILL BITS

- Making good on the statement of Ole Johan Lydersen, **Statoil's** vice president strategy international E&P, in September, "We are not stopping our expansion there (with the purchase of interests in the U.S. GoM from Plains E & P for \$700 million). We will do more acquisitions ... and build a significant position in the Gulf of Mexico." Statoil announced on 6-November that it agreed to buy offshore oil field assets in the U.S. Gulf of Mexico from Anadarko Petroleum Corp. for \$901 million. Stavanger-based Statoil, with a GoM focused office in Houston, said the agreement covers two oil discoveries and one prospect in the Gulf. "This deal is an excellent strategic fit with our deep water (Gulf of Mexico) portfolio," said Statoil's President and Chief Executive Helge Lund. "We have used an assumption slightly above the \$30-35 price band," Statoil spokeswoman Rannveig Stangeland said. "But we see this transaction as robust."

The latest acquisitions are in, or near, fields in which Statoil bought stakes in September, from Plains E & P for \$700 million. Those fields were in the "greater Tahiti area" of south-central Green Canyon, and included a 17.5 percent interest in the Shell Caesar discovery (GC 683), and a 12.5 percent interest in Chevron et al.'s Big Foot discovery (WR 29). Statoil also gained a 12.5 percent stake in the Chevron-operated Big Foot North prospect.

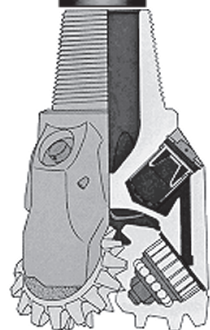
Following the acquisition of Anadarko's interests in the Chevron-operated Big Foot discovery and Big Foot North prospect, Statoil will have a 27.5 percent interest in each. Located in the same geological trend as Tahiti and Caesar, the Big Foot discovery is near the Jack and St. Malo discoveries operated by Chevron. Statoil holds a 25 percent working interest in Jack and a 6.25 percent working interest in St. Malo.

Purchasing the Anadarko interest gives Statoil a 25 percent interest in the Nexen-operated Knotty Head discovery (GC 512). Knotty Head is near the Chevron-operated Tahiti and Tonga discoveries, in which Statoil owns 25 percent of each, and is also close to the Shell-operated Caesar discovery, where Statoil has a 17.5 percent stake.

"In less than two years we have developed a strong deep water position in the Gulf" Lund said. "Our experience and strong technology base from the Norwegian continental shelf are great assets in tackling future developments" in the Gulf. "We are well positioned in key deepwater areas, with working interest in 11 discoveries, including the current development of the Tahiti field," says Øivind Reinertsen, senior vice president for Statoil's GoM activities. "With this acquisition, we'll add an interesting new discovery to our portfolio and will gain a solid foothold in Big Foot and Big Foot North." The transaction is expected to close in the first quarter of 2007, subject to applicable pre-emption rights of co-owners in the subject leases and other customary closing conditions. In lieu of a sale, the parties are discussing the possibility of a joint venture arrangement to effect the transaction.

- The **Murphy**-operated Thunder Hawk discovery (MC 734) in ~5,700 feet of water, has been sanctioned for development, with first oil from a standalone, standardized, semi-submersible production facility capable of handling 45,000 BOE/D, expandable to 60,000 BOE/D with slight modifications, expected in 2009. The facility will be installed on MC 736. The additional capacity will be to accommodate production from satellite discoveries, or third-party tie-backs.

The floating production unit will be supplied by Atlantia, the same company providing offshore facilities for the Independence Hub natural gas





development, and that will own this facility. The Thunder Hawk partners will have a production throughput 'lease' arrangement.

Murphy and its partners are developing Thunder Hawk using a reserve range of 50 - 80 MMBOE, lower than the pre-drill estimate of up to 150 MMBOE. Facility installation is scheduled for late 2008, with first oil anticipated in 2009.

Pending the results of a sidetrack from the discovery well, Murphy et al.'s Thunder Bird discovery (MC 819), ~15 miles west of Thunder Hawk likely will be developed, with production tied back via a subsea pipeline to the Dominion-operated Devil's Tower platform on Mississippi Canyon Block 773. Pre-drill reserve estimates for Thunder Bird ranged from 50 - 75 MMBOE. However, a sidetrack from the discovery well will be required before the owners decide whether to pursue development at Thunder Bird.

Meanwhile, exploratory drilling continued on a third "Thunder" prospect, Thunder Ridge (MC 736), six miles east of Thunder Hawk, with pre-drill reserve estimates of 100 - 200 MMBOE.

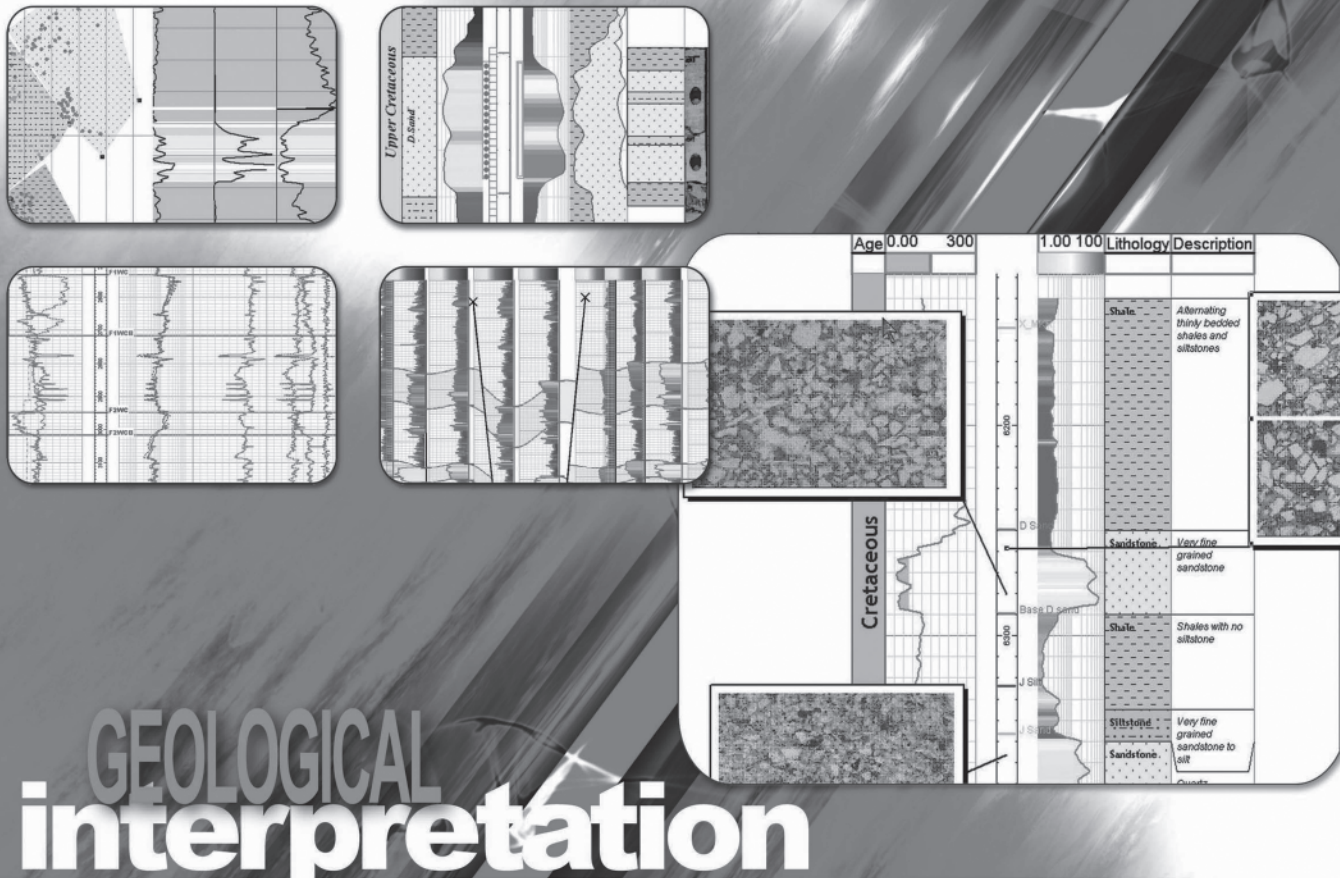
All of Murphy's Thunder discoveries and prospects are on the edge of the Boar's Head Basin.

- On November 12, **Anadarko** agreed to sell its Genghis Khan discovery in the deepwater Gulf of Mexico to the owners of the adjacent Shenzi field (GC 609, 610, 653, and 654) for \$1.35 billion. The sale comprises Anadarko's 100 percent working interests in GC 652 and certain deep rights in Green Canyon block 608. The Shenzi ownership group is comprised of BHP Billiton (44% and operator), Hess Corporation and Repsol YPF each with 28%. Genghis Khan, discovered in 2005 on GC 652, in water depths of ~4,300 feet, has estimated gross hydrocarbon reserves in the range from 65 - 170 MMBOE. The field is located within 3 miles of the Anadarko's Marco Polo production platform. Development of the reserves at Genghis Khan will proceed through the connection of subsea wells where the pipeline infrastructure is already in place. Development may include up to seven wells to fully produce recoverable reserves from the field. First oil is expected in the middle of calendar year 2007 with continued drilling to follow. Genghis Khan is part of the same structure as the recently sanctioned Shenzi project. First production from Shenzi is expected in 2009 through a standalone, tension leg platform (TLP) with a design capacity of 100,000 BO/D and 50 MMCFG/D. The initial Shenzi development will consist of seven producing wells, with full field development expected to have up to 15 producing wells and possible water injection. Gross costs for the full field development through 2015 are estimated at approximately US\$4.4 billion. Recoverable reserves in the portion of Shenzi covered by the initial development are currently estimated to be 350 - 400 MMBOE.

Anadarko continues to restructure and reconfigure itself into a major US onshore gas company, selling assets to pay down debt incurred with its acquisitions of Kerr-McGee and Western Gas Resources, Inc. in June 2006 in separate all-cash transactions totaling \$21.1 billion, plus the assumption of debt estimated at \$2.2 billion. Anadarko previously sold its Canadian exploration and production unit, and reportedly will put a portion of its interest in the K2 and K2 North complex (GC 518 and 562) up for sale as well as continuing to review all its properties. Separately, Anadarko is rumored (and denied) to be considering the sale of its Algerian exploration and production blocks. Anadarko, Algeria's largest foreign operator, has discovered in excess of 2 billion BO on its licenses, from which gross production was 460,000 BO/D, net to Anadarko as of Q2 2006 (the last time the production was broken out) 76,000 BO/D.

- There are unconfirmed reports that **Total** and **Nexen** have, or will, contract **Exmar**, a Belgian shipping and marine engineering contractor, to evaluate the possible use of Exmar's Opti-Ex deep-draft semi-submersible concept to develop Gotcha, Alaminos Canyon (AC) 856. If implemented, this design could support a maximum production of 50,000 BO/D and 50 MMCFG/D. This does not necessarily commit the operator to use this option. Exmar anticipates delivery of the hull in September, 2008. There are no estimates of resources available. However, Gotcha is rumored to be part of Shell's Great White, and hold less than 100 MMBOE.
- On November 29, Plains Exploration & Production Company (50%) announced a new oil discovery at the Friesian Prospect in Green Canyon Block 599 in approximately 3,800 feet of water. Operated by Shell Offshore Inc. (50%), the Friesian discovery was drilled to a total depth of 29,414 feet and encountered more than 120 feet of net oil pay. The discovery well was prepared for completion and temporarily abandoned. Any additional drilling and/or development plans for the Friesian project will be the subject of future announcements. The block was originally acquired by Mobil at OCS Sale 157 in April 1996 for a bonus of \$177,360.

*Paul Post*



EarthPAK is SMT's geological interpretation software package. As part of the KINGDOM software family, EarthPAK is fully integrated with 2d/3dPAK and all other KINGDOM software modules. This integration affords a seamless geological and geophysical workflow for an individual interpreter or a real-time update for the geologist and geophysicist sharing interpretation within a project. The scalable functionality provides for regional exploration to detailed reservoir characterization. EarthPAK includes mapping software for your working map requirements.

#### Functionality includes:

- Standalone or fully integrated with 2d, 3d, and 2d/3dPAK
- Operates with Access, Sequel Server or Oracle databases
- Extensive database objects from basic well information to production and zone data
- Access to all the well data with a click in base map and cross-section
- Spreadsheet for displaying, quality control, editing multi-well data
- Touch and correlate or drag and drop correlation in cross-section
- Comprehensive data posting, including bubbles and log signature on base map
- Zone definition based on formation tops, grids, and measured, subsea and TVD depths
- Measured log, true vertical and true stratigraphic thickness and reservoir property calculations for multiple zones



Seismic Micro-Technology, Inc.  
www.seismicmicro.com

**E&P BASED. Software FOCUSED.**

North America: +1 713 464 6188 Europe: +44 (0)20 8240 6524 Asia: +65 6220 1089

©2006 ALL RIGHTS RESERVED. SEISMIC MICRO-TECHNOLOGY, INC.

# New Orleans Geological Auxiliary News

Members of the Auxiliary enjoyed a delightful day touring Houmas House Plantation and gardens on November 8. The ladies met at President Susie Baker's house in Chateau Estates and enjoyed refreshments. We then boarded a chartered bus for the drive to Burnside, LA, the setting for Houmas House. A lovely guide, dressed in period costume, took us on a tour of the home. We all enjoyed stories of the various pieces of furniture and the history of the house. A delicious lunch was later served in the café on the grounds. After a fun day of strolling through the house and gardens we then reboarded the bus for our trip back home! Many thanks to Chairmen Alma Dunlap and Beverly Christina for all of their plans. This was a beautiful day and a wonderful setting for us to all enjoy being together!

Our condolences go to longtime member and Past President Judy Sabate' on the loss of her husband, Bob Sabate'. Bob was such a good man who was always so supportive of the Society and the Auxiliary. We always enjoyed seeing him at events and could always call on him for advice. Bob will be greatly missed by his family and friends.

If you have not already joined or rejoined the Auxiliary, it's not too late to take part in some of the activities planned for the rest of the year. Please contact our Treasurer, Peggy Rogers at 392-6323, or any of our members for information about joining. Our next event will be lunch at Longbranch Restaurant in Abita Springs on February 7. Chairman Mary Walther, along with committee members Amber Klekamp and Trez Zotkiewicz have a great day planned for us! Hope you can join us then!

Beverly Kastler  
NOGA Member-at-Large

## NOGA Application Form

*Dues: \$15.00*

Name \_\_\_\_\_

Home Address \_\_\_\_\_

Home phone \_\_\_\_\_

Husband's Name \_\_\_\_\_

Husband's Company \_\_\_\_\_

*Please make check payable to New Orleans Geological Auxiliary and  
mail with application to: Peggy Rogers*

*2580 Valentine Ct*

*New Orleans LA 70131*





# EXPLORE A WORLD OF OPPORTUNITIES WITH TGS

- Non-Exclusive Seismic Surveys
- Seismic Data Acquisition
- Seismic Data Processing via TGS Imaging
- Integrated Regional Interpretations
- Well Log Data via A2D Subsidiary
- Gravity / Magnetic Data & Services



Seismic



Well Log



Integrated Products



TGS Imaging

[www.world-class-data.com](http://www.world-class-data.com)

TGS-NOPEC Geophysical Company • [www.tgsnopec.com](http://www.tgsnopec.com) • NORWAY +47 31 29 20 00 • USA +1 713 860 2100 • UK +44 (0) 1234 272122 • AUSTRALIA +61 8 9480 0000

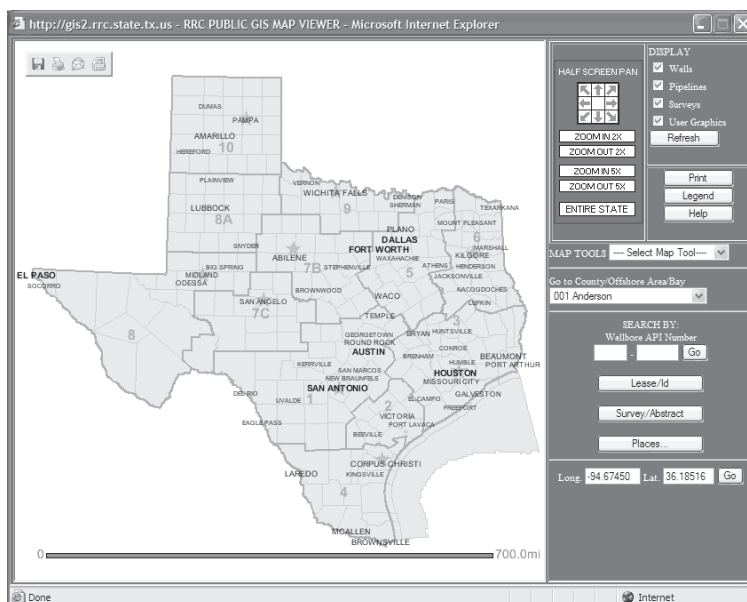
✂ **Other Gulf Coast States offer GIS access to oil and gas data:** The Louisiana DNR SONRIS website portal, which can be accessed at <http://dnr.louisiana.gov>, is hard to beat as a public source of oil and gas information; however, other states have similar sites that offer GIS-based access to information down to the individual well level.

**Alabama** - The Geological Survey of Alabama / Alabama State Oil & Gas Board has a website with GIS search capability that allows public access to oil and gas information including monthly production data. The site can be accessed through the Oil and Gas Board website at <http://www.ogb.state.al.us/>.

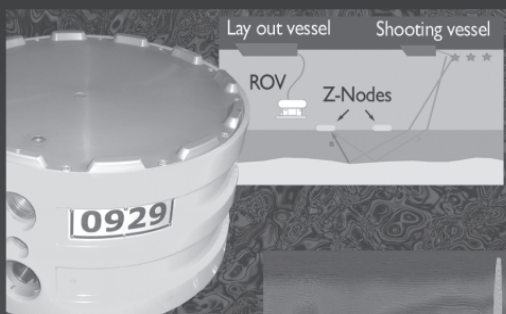
**Mississippi** - The Mississippi State Oil & Gas Board offers easy to use search capability for locating well and field data including scanned images of original well tickets, and field production, among other data. The site can be accessed at: <http://www.ogb.state.ms.us/>.

**Texas** - The Railroad Commission of Texas has begun to build public access online capability through their RRC Public GIS Map Viewer that can be accessed at <http://www.rrc.state.tx.us/maps/index.html>. The site offers access to well files that include drilling permits and production data, pipeline, survey, and well ID. Future plans may include access to well logs.

**Robert Rooney**



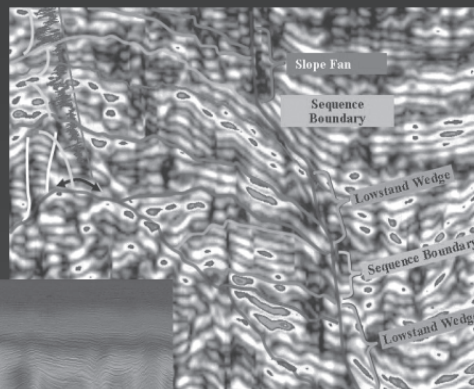
# Fairfield *does more for you*



## Acquisition

### Z3000 Node System

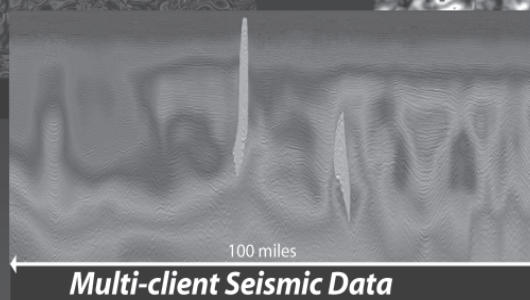
The latest and most advanced seismic system of its kind – the Z3000 Node System acquires data to 3000 meters of water depth.



## Processing

### SPICE

Fairfield's ongoing research and development efforts bring new technologies to the marketplace. For example, Fairfield's new SPICE technology shows critical structural and stratigraphic detail extracted from the seismic wavelet.



### Prestack Depth Migration

This 100-mile crossline is an extraction from Fairfield's multi-client database. The color velocity overlay, created from Fairfield's proprietary 3D tomographic, pre-stack depth migration velocity analysis, demonstrates the complexity of the geology.

**Fairfield is the resource** explorationists can depend on for the acquisition and processing of proprietary and multi-client data. For 30 years Fairfield's seismic knowledge and understanding has brought major advances to the seismic industry.



Houston (1) 281-275-7500  
New Orleans (1) 504-525-6400  
Denver (1) 303-716-1630

Jakarta (62) 21-5296-4565  
Ho Chi Minh City (84) 8-556-6130  
[www.fairfield.com](http://www.fairfield.com)



# THE NEW ORLEANS GEOLOGICAL SOCIETY MEMORIAL FOUNDATION, INC.

The Memorial Foundation is an IRS Tax Exempt Code #501 (c)(3) organization. The Federal I.D. is: 72-1220999. Please consider making your donation prior to the close of this year's fiscal cycle which is September 30, 2007. Your individual support in any amount will help meet the IRS Guidelines for our Foundation. *Thanks!*

## \$15,000 AND ABOVE

### Gibbett Hill Foundation

*In Memory of Steve & Marion Millendorf,  
William J. Prutzman, Roger G. Vincent & Ron Youngblood*

## \$8,000 TO \$9,000

### GCAGS Matching Funds

## \$3,000 TO \$4,000

Paul C. McWilliams

## \$1,000 TO \$3,000

### Olga Braunstein Succession

NOGS Golf Tournament May 2006

*In Memory of Bill Craig*

## \$500 TO \$1,000

### Dorothy N. Wise

*In Memory of William H. Wise*

## \$250 TO \$499

### Carlo C. Christina

*In Memory of Al Gilreath*

## UP TO \$249

### Hilary James Brook

Elisha A. Buckner

F. Robert Bussey

*In Memory of Lee Meltzer*

### Chevron

*Matching Funds*

Clarence F. Conrad

Charley and Trudy Corona

*In Memory of Robert W. Sabate'*

M. R. "Bob" Douglass

Exxon Mobil Foundation

Matching Funds

Michael N. Fein

Richard H. Fillon

Laurens Gaarenstroom

Peter G. Gray

*In Memory of Robert W. Sabate'*

Bernard L. Hill, Jr.

*In Memory of Robert E. Osborne*

Owen R. Hopkins

Dan E. Hudson

Thomas A. Hudson

Thomas Charles Klekamp

Richard G. Klibert

William J. Malin

Casey R. Mobley

New Orleans Geological

Auxiliary

*In Memory of June Philpott*

Russell H. Nordwell

William J. O'Leary

Richard A. Olsen

### Elizabeth M. Petro

Edward B. Picou Jr.

*In Memory of Shelby W. Smith*

Brenda E. Reilly

Edmund L. Russell

*In Memory of Burt Shullaw*

Monte C. Shalett

Robert C. Shoup

Dirk L. Smith

Dr. J. O. Snowden

Raymond O. Steinhoff

*In Memory of Harold E. Vokes*

Thomas A. Tucker

Roy C. Walther

William M. Whiting

Armour C. Winslow

*In Memory of Rita Menzel Winslow*

Frances A. Wiseman

*In Memory of Steve Widdicombe*

James W. Yeldell, Jr.

Jim Zotkiewicz

*In Memory of Bill Craig*

Robin A. Broussard

Chevron

Bernard L. Hill, Jr.

Jeff Jandegian

John C. Scheldt

Luncheon "Roundup" Donations

# FONO FUND

The FONO Fund accepts contributions that are invested and the income dedicated to assure sufficient financial resources will always be available to maintain the NOGS business office. To date no funds from this account have been used. Contributors are reminded that donations to the FONO Fund are not covered by the IRS 501 (c)(3) tax exempt classification and should be reported as a business expense on your IRS tax report.

## \$6,000 AND ABOVE

### GCSSEPM Foundation

## \$250 TO \$500

### Willis E. Conatser

James A. Hartman

*In Memory of Robert W. Sabate'*

## UP TO \$249

### Alfred H. Baker Jr.

Joseph E. Boudreaux

Jack G. Bryant

*In Memory of Shelby W. Smith*

Anthony Carollo Jr.

Arthur F. Christensen

Richard P. Colomes

Joffre J. Crouere

Michael A. Danahy

John Dombrowski

Merle J. Duplantist

Richard A. Edmund

Michael N. Fein

David Garner

Peter G. Gray

Stewart L. Henry

Bernard L. Hill, Jr.

Thomas A. Hudson

Thomas Charles Klekamp

Richard G. Klibert

Russell J. Landry

William J. Malin

### Jeannie F. Mallick

George M. Markey, Jr.

Louis L. McCormick

Paul C. McWilliams

Robert G. Murphy

Richard A. Olsen

William S. Peirce

James P. Raymond, Jr.

Brenda E. Reilly

C. R. Rondeau

Monte C. Shalett

Rudolf B. Siegert

Dirk L. Smith

Raymond Stephens

H. Leighton Steward

Roy C. Walther

James W. Yeldell Jr.

Jim Zotkiewicz

CONTRIBUTIONS FOR BOTH FUNDS THROUGH DECEMBER 5, 2006.

DONATIONS ARE LISTED FOR ONE YEAR.

# COMPLEX RESERVOIR EVALUATIONS?

Log Calibration *Reservoir Performance* Flow Assurance  
Completion Design *Sand Control* Fracture Design  
Reserve Estimates Saturation Modeling  
*Borehole Stability* Reservoir Data Management

## CORE- AND FLUID-BASED SOLUTIONS

Advanced Rock Properties

Reservoir Geology



Reservoir Fluid Analysis

Core Analysis

Core Laboratories continuously develops innovative ways to help solve your most difficult reservoir evaluation problems. We provide the industry's widest range of petrophysical and reservoir fluid services.

No other oilfield service company has reservoir rock and fluid expertise comparable to Core's. On average, our core or reservoir fluids analyst has over 15 years experience providing solutions that will help optimize your reservoirs.

Core Lab gives you industry-leading technology, unmatched expertise, and unparalleled commitment to customer service.

**New Orleans . . . . . 504-733-6583**

**Houston . . . . . 713-328-2121**

Corpus Christi, Texas . . . . . 361-289-5457

Midland, Texas . . . . . 915-694-7761

Lafayette, Louisiana . . . . . 337-837-8616

Bakersfield, California . . . . . 661-392-8600

Denver, Colorado . . . . . 720-532-2666

Duncan, Oklahoma . . . . . 405-498-2475

Anchorage, Alaska . . . . . 907-349-3541

Trinidad, West Indies . . . . . 868-658-0681

**[www.corelab.com](http://www.corelab.com) • [psinfo@corelab.com](mailto:psinfo@corelab.com)**

**No one has more core-based solutions for optimizing your reservoir.**

© 2003 Core Laboratories. All rights reserved.



## Dominion Exploration & Production, Inc.

OFFSHORE BUSINESS UNIT  
(Including South Louisiana)

1450 Poydras Street  
New Orleans, LA 70112  
Tel: 504-593-7000  
Fax: 504-593-7665

[www.dom.com](http://www.dom.com)

New Orleans | Houston | Oklahoma City | Calgary  
Jane Lew, WV | Indiana, PA | Traverse City, MI | Roosevelt, UT



### Collarini Energy Staffing Inc.

Full-Time and Temporary  
Exploration and Production Personnel

Facilities · Drilling · Production · Reservoir Engineers  
Landmen · Geoscience · Information Technology  
Health and Safety · Management · Procurement  
Accounting · Administrative Support

Houston and New Orleans  
(832) 251-0553 · Fax (832) 251-0157  
[www.collarini.com](http://www.collarini.com)

Connecting the Industry's Experts



### Collarini Associates

4200 South I-10 Service Road, Suite 230  
Metairie, Louisiana 70001  
(504) 887-7127  
(504) 887-7162

Reservoir Engineering  
Oil & Gas Property Evaluation  
3-D Seismic Interpretation  
Integrated Field Studies

New Orleans • Houston  
[www.collarini.com](http://www.collarini.com)

## ATWATER CONSULTANTS, LTD.

REGISTERED AND CERTIFIED PETROLEUM PROFESSIONALS

GEOLOGICAL, ENGINEERING, GEOPHYSICAL,  
TRAINING AND EXPERT WITNESS SERVICES

318 Camp Street  
New Orleans, LA 70130

Tel. (504) 581-6527  
Fax (504) 524-7798

## MURPHY

EXPLORATION &  
PRODUCTION  
COMPANY - USA

131 SOUTH ROBERTSON STREET  
NEW ORLEANS, LA 70161-1780

P.O. BOX 61780  
(504) 561-2811



### CIMAREX ENERGY CO.

GULF OF MEXICO REGION  
GOM, SE La., N. La., MS, AL

1100 Poydras St.; Suite 1100

Keith Gourgues

New Orleans, Louisiana 70163

Region Manager

504-586-1815 / Fax 504-586-9035

## NORTHCOAST OIL COMPANY

610 E. Rutland St.  
Covington, LA 70433  
(985) 898-3577  
(985) 898-3585 FAX

Jack M. Thorson  
Eric C. Broadbridge  
J. Daryl Gambrell  
Raymond W. Stephens

(832) 242-6000 (O)  
(713) 917-0493 (O)

(504) 931-7506 (C)  
[johnjurasin@jurasinoilgas.com](mailto:johnjurasin@jurasinoilgas.com)

## JURASIN OIL & GAS

9700 Richmond Ave., Suite # 124  
Houston, TX 77042-4821

JOHN M. JURASIN  
President

Cert. Pet. Geologist #4284  
Cert. Prof. Earth Scientist #1961



|  |   |  |
|--|---|--|
|  <p><b>Shoreline Gas Inc.</b><br/> <a href="http://www.shorelinegas.com">www.shorelinegas.com</a><br/> Full Service Natural Gas Marketing</p> | <p><i>Advertising space is<br/> available for the <b>NOGS<br/> LOG</b> - Please contact the<br/> <b>NOGS</b> office for<br/> information!</i></p>   |  |
| <p><b>ANSYTHE</b><br/> Donald I. Andrews<br/> 504-887-3432</p>    |   |  |
| <p><b>BOO-KER OIL &amp; GAS CORP.</b><br/> Gray S. Parker<br/> 826 Union, Suite 300<br/> New Orleans, LA 70112<br/> Bus. (504) 581-2430<br/> Fax (504) 566-4785</p>  | <p><b>H. WARREN BELL</b><br/> Oil and Gas Exploration<br/> 2500 Tanglewilde, Suite 485<br/> Houston, TX 77063-2126<br/> Bus (713) 266-7297<br/> Fax (713) 266-7298</p>  |  |
| <p><b>C &amp; R EXPLORATION, INC.</b><br/> Carlo C. Christina<br/> Lawrence G. Ringham</p>   | <p><b>R. W. BOEBEL</b><br/> Petroleum Geologist<br/> 170 Broadway Street, Suite 321<br/> New Orleans, LA 70118<br/> (504) 866-4313</p>  |  |
| <p><b>C. R. RONDEAU</b><br/> Petroleum Geologist<br/> 119 W Southland Ave.<br/> Ironwood, MI 49938<br/> Res. (906) 932-4692</p>  | <p><b>RAFIDI OIL AND GAS, INC.</b><br/> Jaser N. Rafidi, President<br/> 4415 Shore Dr., Suite 202<br/> Metairie, LA 70006<br/> Bus. (504) 722-2942<br/> Fax (504) 888-5539; Res. (504) 888-1661</p>                             |  |
| <p><b>CLASSEN EXPLORATION, INC.</b><br/> James S. Classen<br/> Looking for close in deals<br/> P.O. Box 140637<br/> Boise, ID 83714<br/> Bus. (208) 854-1037<br/> Fax (208) 854-1029<br/> classenllc@msn.com</p>               | <p><b>ROY C. WALTHER</b><br/> Petroleum Geologist<br/> 2421 Prancer Street<br/> New Orleans, LA 70131<br/> Bus. (504) 392-8513<br/> Res. (504) 392-9332</p>   |  |
| <p><b>COLLES C. STOWELL</b><br/> Oil and Gas Consultant<br/> 2288 Chisolm<br/> Salado, TX 76571<br/> (254) 947-8977</p>  | <p><b>RUDOLF B. SIEGERT</b><br/> Petroleum Geologist<br/> P.O. Box 2740, Slidell, LA 70459<br/> (985) 641-4265</p>  |  |
| <p><b>EDWARD B. PICOU, JR.</b><br/> Consulting Micropaleontologist - Retired<br/> 228 St. Charles Ave., Suite 1330 C<br/> New Orleans, LA 70130<br/> Bus. (504) 529-5155<br/> Res. (504) 282-3096</p>                          | <p><b>STONE ENERGY CORPORATION</b><br/> James H. Stone, Chairman of the Board<br/> D. Peter Canty, President &amp; CEO<br/> LL&amp;E Tower, Suite 2650, 900 Poydras St.<br/> New Orleans, LA 70112-4000<br/> (504) 581-7766</p> |  |
| <p><b>D-O-R ENGINEERING, INC.</b><br/> 3-D and Geoscience Services<br/> 120 Oil Center Dr., Bldg. 12<br/> P.O. Box 51707, Lafayette, LA 70505<br/> Bus. (337) 233-2378<br/> Fax (337) 233-2907</p>                             | <p><b>TONY CAROLLO</b><br/> Consulting Geologist<br/> Unitization Geosteering Field Studies<br/> 1701 Peach Street<br/> Metairie, LA 70001<br/> Bus. (504) 885-0004<br/> Res. (504) 885-6829</p>                                |  |

## Super Science Saturday Returns!

NOGS Volunteers are needed to help with  
Super Science Saturday

Saturday April 7th  
11:00 - 3:00  
Louisiana Children's Museum

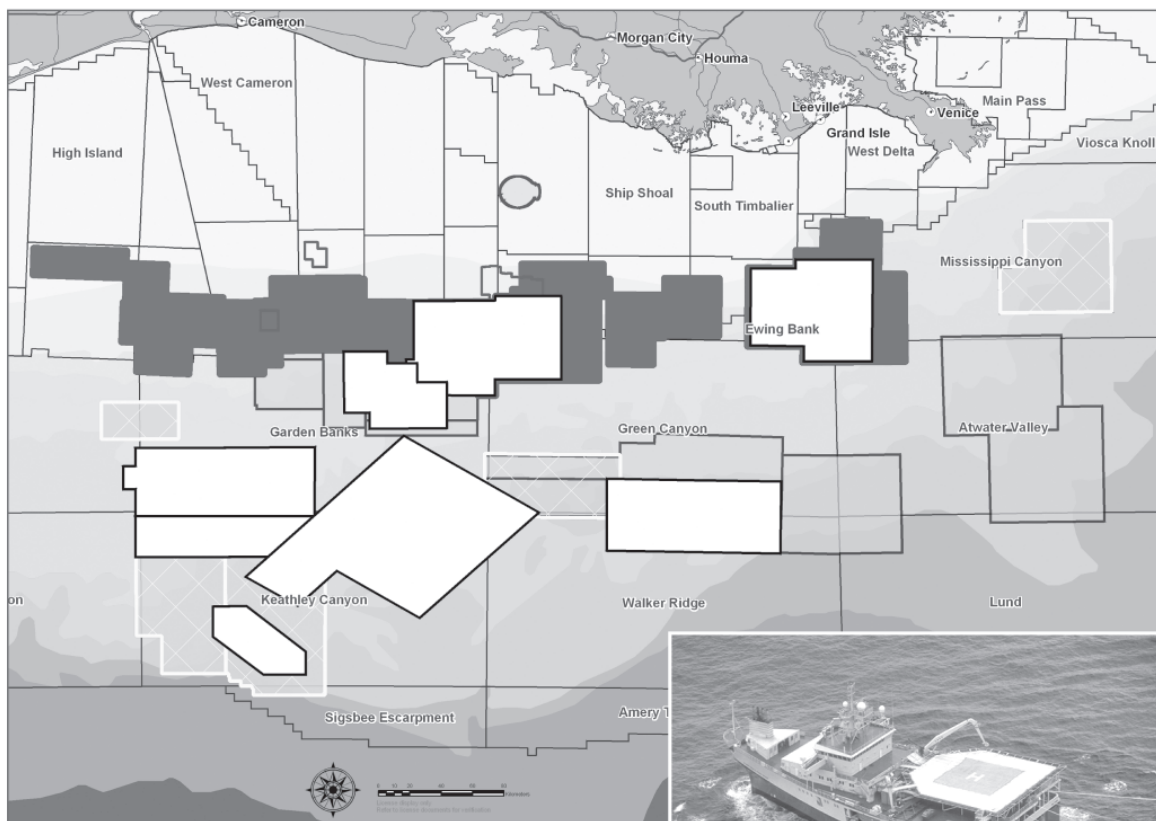


GP02133.AI  
MAB 01/12/04

For more information or to volunteer, contact:  
Thomas C. Bergeon - (504) 832-3772, [tom.bergeon@centuryx.com](mailto:tom.bergeon@centuryx.com)

## The Data You Need

## PGS Gulf of Mexico Library



For more information email [gominfo@pgs.com](mailto:gominfo@pgs.com)



### Map Legend

- PreSDM Full Volume
- PreSDM Grids
- PreSTM FlexR
- PGS\_3D\_4C
- PostSTM Streamer and Seafloor Seismic

### 3D Prestack Time and Depth Migration Projects:

- Flex Trend (FlexR) and deep water reprocessing projects
- True amplitude processing
- Bending ray Kirchhoff PSTM
- Turning wave Kirchhoff PSDM
- Wave equation PSDM

**HOUSTON**  
 15150 Memorial Drive  
 Houston, TX 77079  
 Tel: 281-509-8000 / Fax: 281-509-8500

**A Clearer Image**  
[www.pgs.com](http://www.pgs.com)



**When Mother Nature doesn't  
back down.**



**We have experts  
up to her challenge.**

While Mother Nature is a powerful force to reckon with as evidenced by Hurricanes Katrina and Rita, responding to extraordinary challenges is a way of life at Shell. And Charlie Williams, Chief Scientist and Engineer, is definitely up to the task. Under his lead, a record-setting 1000-ton rig lift and 2700 feet deep pipeline repairs for one of Shell's key oil production platforms in the Gulf of Mexico were safely completed ahead of schedule bringing much-needed supply back into production. Learn more about how Shell uses technology to secure energy by visiting [shell.com/us/sepc](http://shell.com/us/sepc)



**MARINE PROPERTIES, LLC  
BERKSHIRE EXPLORATION CO.**  
MONTE C. SHALETT, CPL, PRESIDENT  
3030 Lausat Street BUS. (504) 831-7779  
Metairie, LA 70001-5924 FAX. (504) 831-8315

**WWW.NOGS.ORG**

**PCI** **Paleo Control, Inc.** Houston, Texas  
713-849-0044

Drilling Wells, Studies and Data Base  
Loyd Tuttle Frio, SE Texas  
Bob Liska Wilcox, S and SE Texas  
Jim Thorpe Miocene and Cam-Miogyp



**NEW ORLEANS GEOLOGICAL SOCIETY**



810 Union Street, Suite 300  
New Orleans, LA 70112-1430

Presorted  
First Class Mail  
U.S. Postage  
PAID  
Permit #665  
New Orleans, LA

**DATED MATERIAL**